



# Always there to help you

Register your product and get support at  
[www.philips.com/support](http://www.philips.com/support)



AJ2000



## User manual

# PHILIPS







# Contents

|          |                                       |           |
|----------|---------------------------------------|-----------|
| <b>1</b> | <b>Important</b>                      | <b>2</b>  |
|          | Safety                                | 2         |
| <b>2</b> | <b>Your clock radio</b>               | <b>3</b>  |
|          | Introduction                          | 3         |
|          | What's in the box                     | 3         |
|          | Overview of the clock radio           | 4         |
| <b>3</b> | <b>Get started</b>                    | <b>5</b>  |
|          | Connect power                         | 5         |
|          | Set clock                             | 6         |
|          | Turn on                               | 6         |
|          | Adjust display brightness             | 6         |
| <b>4</b> | <b>Listen to FM radio</b>             | <b>7</b>  |
|          | Prepare FM antenna                    | 7         |
|          | Store FM radio stations automatically | 7         |
|          | Select a preset FM radio station      | 7         |
|          | Tune to FM radio stations             | 7         |
|          | Store FM radio stations manually      | 7         |
| <b>5</b> | <b>Set alarm timer</b>                | <b>8</b>  |
|          | Set alarm                             | 8         |
|          | Switch off the alarm                  | 8         |
| <b>6</b> | <b>Set sleep timer</b>                | <b>9</b>  |
| <b>7</b> | <b>Product information</b>            | <b>10</b> |
|          | Specifications                        | 10        |
| <b>8</b> | <b>Troubleshooting</b>                | <b>11</b> |
| <b>9</b> | <b>Notice</b>                         | <b>12</b> |
|          | Care of the environment               | 12        |



# 1 Important

## Safety



### Warning

- Never remove the casing of this clock radio.
  - Never lubricate any part of this clock radio.
  - Never place this clock radio on other electrical equipment.
  - Keep this clock radio away from direct sunlight, naked flames or heat.
  - Make sure that you always have easy access to the power cord, plug or adaptor to disconnect the clock radio from the power.
- 
- Read and follow these instructions.
  - Make sure that there is enough free space around the clock radio for ventilation.
  - Only use attachments/accessories specified by the manufacturer.
  - Use only power supplies listed in the user manual.
  - Unplug this clock radio during lightning storms or when unused for long periods of time.
  - Battery usage CAUTION – To prevent battery leakage which may result in bodily injury, property damage, or damage to the clock radio:
    - Install the battery correctly, + and - as marked on the clock radio.
    - Remove the battery when the clock radio is not used for a long time.
    - The battery shall not be exposed to excessive heat such as sunshine, fire or the like.
  - The clock radio shall not be exposed to dripping or splashing.
  - Do not place any sources of danger on the clock radio (e.g. liquid filled objects, lighted candles).
  - Where the plug of the Direct Plug-in Adapter is used as the disconnect device, the disconnect device shall remain readily operable.

## Risk of swallowing batteries!

- The device may contain a coin/button type battery, which can potentially be swallowed. Keep the battery out of reach of children at all times! If swallowed, the battery can cause serious injury or death. Severe internal burns can occur within two hours of ingestion.
- If you suspect that a battery has been swallowed or placed inside any part of the body, seek immediate medical attention.
- When you change the batteries, always keep all new and used batteries out of reach of children. Make sure that the battery compartment is completely secure after you replace the battery.
- If the battery compartment cannot be completely secured, discontinue use of the product. Keep out of reach of children and contact the manufacturer.



### Note

- The type plate is located on the bottom of the apparatus.



## 2 Your clock radio

Congratulations on your purchase, and welcome to Philips! To fully benefit from the support that Philips offers, register your product at [www.philips.com/welcome](http://www.philips.com/welcome).

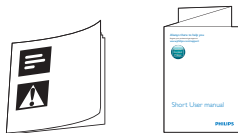
### Introduction

With this clock radio, you can:

- listen to FM radio;
- view time; and
- set two alarms.

### What's in the box

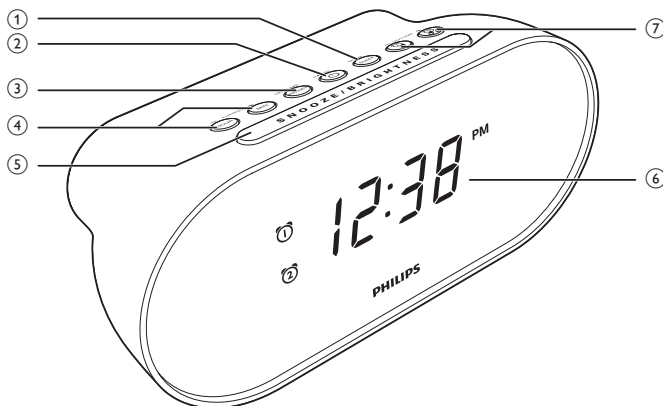
Check and identify the contents of your package:



- Clock radio
- Printed materials



## Overview of the clock radio



### ① SCAN/SLEEP

- Scan and store radio stations automatically.
- Set sleep timer.

### ② ⏻ / RADIO

- Turn the radio on or off.

### ③ SET TIME/PRESET

- Set time.
- Store FM radio stations manually.
- Select a preset radio station.

### ④ HOUR/MIN/- TUNING +

- Adjust hour and minute.
- Adjust 12/24 hour format.
- Tune to FM radio stations.

### ⑤ SNOOZE/BRIGHTNESS

- Snooze the alarm.
- Adjust display brightness.

### ⑥ Display panel

- Show current status.

### ⑦ ⌚ / ⌚ /- VOLUME +

- Set alarm.
- Activate or deactivate alarm timer.
- Adjust volume.



## 3 Get started

Always follow the instructions in this chapter in sequence.

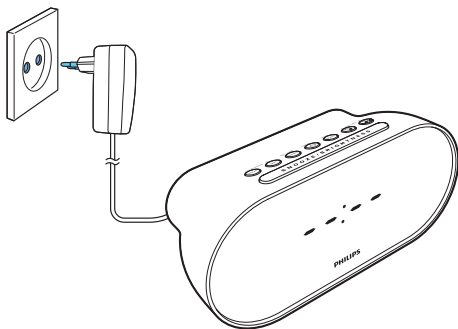
### Connect power



#### Caution

- Risk of product damage! Make sure that the power voltage corresponds to the voltage printed on the back or underside of the clock radio.
- Risk of electric shock! When you unplug the AC power plug, always pull the plug from the power outlet. Never pull the cord.
- Risk of explosion! Keep the battery away from heat, sunshine or fire. Never discard battery in fire.
- Danger of explosion if battery is incorrectly replaced. Replace only with the same or equivalent type.
- The battery contains chemical substances, so it should be disposed of properly.

Connect the power adaptor to the wall outlet.



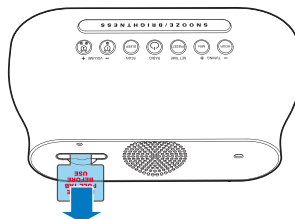
### Back-up battery

You can only use AC power as power supply. The lithium CR2032 battery can only back up clock and alarm settings.

When power is disconnected, the display backlight is off.

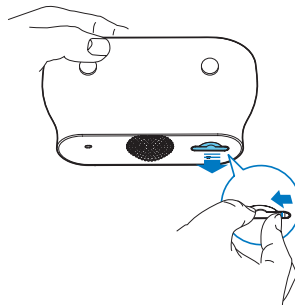
#### For first-time use:

Remove the protective tab to activate the battery.



#### To replace the battery:

- 1 Push the clip to the left and pull out the battery tray.



- 2 Insert 1 x CR2032 battery as illustrated.





---

## Set clock

- 1 In standby mode, press and hold **SET TIME** for two seconds to activate clock setting mode.  
↳ **[24H]** begins to blink.
- 2 Press **HOUR** or **MIN** to set 12/24 hour format.
- 3 Press **SET TIME** to confirm.
- 4 Press **HOUR** and **MIN** repeatedly to set hour and minute respectively.
- 5 Press **SET TIME** to confirm.  
↳ The set time is displayed.

---

## Turn on

Press **⏻** to turn on the radio.

- ↳ The product switches to FM tuner mode.

---

## Switch to standby

Press **⏻** again to switch to standby.

- ↳ The clock (if set) is displayed.

---

## Adjust display brightness

Press **BRIGHTNESS** repeatedly to select different brightness levels:

- High
- Medium
- Low

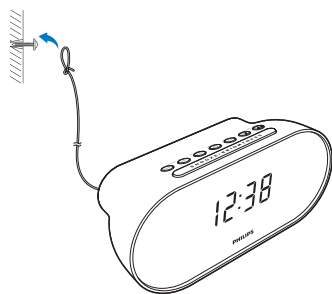




## 4 Listen to FM radio

### Prepare FM antenna

- 1 Fully extend and adjust the position of the pig-tail antenna until you find the best reception.
- 2 Fix the antenna as illustrated.



#### Note

- To prevent interference, position the antenna as far as possible from any other electrical appliances.

### Store FM radio stations automatically

#### Note

- You can store a maximum of 20 FM radio stations.

In FM tuner mode, press and hold **SCAN** for two seconds.

- ↳ The clock radio stores all the available FM radio stations automatically.
- ↳ The first available station broadcasts automatically.

### Select a preset FM radio station

In FM tuner mode, press **PRESET** repeatedly to select a preset radio station.

- While listening to FM radio, press - **VOLUME +** repeatedly to increase or decrease volume.

### Tune to FM radio stations

- 1 Press **RADIO** to turn on FM radio.
- 2 Press and hold - **TUNING +** for two seconds.
  - ↳ The clock radio tunes to a station with strong reception automatically.
  - To fine tune the radio station, you may press - **TUNING +** repeatedly to change a frequency.
- 3 Repeat step 2 to tune to more radio stations.

### Store FM radio stations manually

- 1 In FM tuner mode, tune to an FM radio station.
- 2 Press and hold **PRESET** for two seconds.
  - ↳ The preset number begins to blink.
- 3 Press **HOUR** or **MIN** to select a number.
- 4 Press **PRESET** to confirm.
- 5 Repeat steps 1 to 4 to store other stations.

#### Note

- To remove a pre-stored station, store another station in its place.



## 5 Set alarm timer

### Set alarm

You can set two alarms to ring at different time via different alarm sources.



#### Note

- Make sure that you have set the clock correctly.

- 1 In standby mode, press and hold **⏰** or **⌚** for two seconds to activate alarm setting mode.  
↳ The hour and minute digits and the alarm icon ( **⏰** or **⌚** ) begin to blink.
- 2 Press **HOUR** and **MIN** repeatedly to set hour and minute.
- 3 Press **⏰** or **⌚** to confirm.
- 4 Press **HOUR** or **MIN** to select alarm source:
  - buzzer or;
  - your last listened FM station.
- 5 Press **⏰** or **⌚** again to confirm.



#### Tip

- The alarm volume is not adjustable, but will go up gradually to gently wake you up.
- If FM radio is selected as alarm source, yet you are listening to FM radio at the alarm time, buzzer alarm will go off instead.

### Switch off the alarm

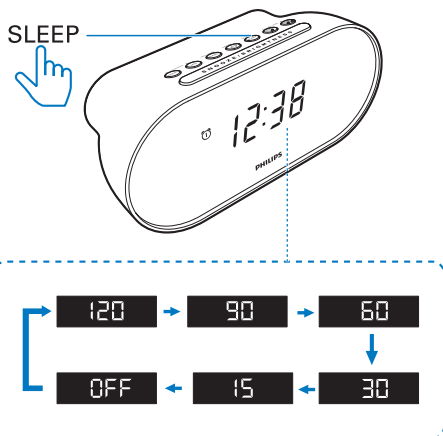
Select one of the following ways to switch off the alarm.

- When the alarm goes off, press **⏰** or **⌚**.  
↳ The alarm repeats itself in subsequent days.
- When the alarm goes off, press **SNOOZE**.  
↳ The alarm snoozes and repeats ringing nine minutes later.
- To cancel the alarm completely, press **⏰** or **⌚** once or more until **⏰** or **⌚** icon disappears.  
↳ The alarm icon ( **⏰** or **⌚** ) appears if the alarm timer is on and disappears if it is off.



## 6 Set sleep timer

Sleep timer enables the radio to be automatically switched off after a preset period.



- 1 Press **SLEEP** repeatedly to select the sleep timer period (in minutes).
  - ↳ The clock radio switches to standby mode automatically after the preset period.

### To deactivate the sleep timer:

In sleep timer setting mode, press **SLEEP** repeatedly until **[OFF]** appears.



## 7 Product information



### Note

- Product information is subject to change without prior notice.

|                                    |  |
|------------------------------------|--|
| Rated Output Power                 | 0.7W RMS @ 10% THD   |
| Acoustic Frequency Response        | 250 Hz - 13 kHz  |
| Speaker Driver                     | 1 x 1.5", 8 $\Omega$   |
| Tuner Frequency Range              | FM: 87.5 - 108 MHz   |
| Preset Station                     | 20   |
| Power Supply (Power Adapter)       | Brand name: PHILIPS;<br>Model:<br>SW0500500-A07;<br>Input: 100-240V~,<br>50/60 Hz, 300 mA<br>Max;<br>Output: 5 V $\equiv$ ,<br>500 mA; |
| Battery                            | 1 x CR2032 battery<br>for time/alarm<br>backup   |
| Standby Power Consumption          | <1 W   |
| Dimensions - Main Unit (W x H x D) | 185 x 85 x 81 mm   |
| Weight - Main Unit                 | 0.3 kg   |



## 8 Troubleshooting



### Warning

- Never remove the casing of this device.

To keep the warranty valid, never try to repair the system yourself.

If you encounter problems when using this device, check the following points before requesting service. If the problem remains unsolved, go to the Philips Web page ([www.philips.com/support](http://www.philips.com/support)). When you contact Philips, make sure that the device is nearby and the model number and serial number are available.

### No power

- Make sure that the AC power plug of the clock radio is connected properly.
- Make sure that there is power at the AC outlet.

### No response from the clock radio

- Disconnect and reconnect the AC power plug, then turn on the clock radio again.

### Poor radio reception

- Keep the clock radio away from other electronic devices to avoid radio interference.
- Fully extend and adjust the position of the pig-tail antenna.

### Alarm does not work

- Set the clock/alarm correctly.



## 9 Notice

Any changes or modifications made to this device that are not expressly approved by Gibson Innovations may void the user's authority to operate the equipment.

---

### Care of the environment

#### Disposal of your old product and battery



Your product is designed and manufactured with high quality materials and components, which can be recycled and reused.

Do not throw away the product with the normal household waste at the end of its life, but hand it in at an official collection point or recycling. By doing this, you help to preserve the environment.

#### Environmental information

All unnecessary packaging has been omitted. We have tried to make the packaging easy to separate into three materials: cardboard (box), paper pulp (buffer) and polyethylene (bags, protective foam sheet.)

Your system consists of materials which can be recycled and reused if disassembled by a specialized company. Please observe the local regulations regarding the disposal of packaging materials, exhausted batteries and old equipment.



产品中有害物质的名称及含量  
Names and Contents of Hazardous Substances

| 部件名称<br>Name of the parts                | 有害物质<br>Hazardous Substance |           |           |                  |               |                 |
|--|-----------------------------|-----------|-----------|------------------|---------------|-----------------|
|  | 铅<br>(Pb)                   | 汞<br>(Hg) | 镉<br>(Cd) | 六价铬<br>(Cr (VI)) | 多溴联苯<br>(PBB) | 多溴二苯醚<br>(PBDE) |
| Housing<br>外壳                            | ○                           | ○         | ○         | ○                | ○             | ○               |
| Loudspeakers<br>喇叭单元                     | ○                           | ○         | ○         | ○                | ○             | ○               |
| PWBs<br>电路板组件                            | ×                           | ○         | ○         | ○                | ○             | ○               |
| Accessories<br>(cables)<br>附件 (电源线, 连接线) | ×                           | ○         | ○         | ○                | ○             | ○               |

本表格依据 SJ/T 11364 的规定编制。

The table is formulated according to SJ/T 11364.

○：表示该有害物质在该部件所有均质材料中的含量均在 GB/T 26572 规定的限量要求以下。

○：Indicates that this hazardous substance contained in all of the homogeneous materials for this part is below the limit requirement in GB/T 26572.

×：表示该有害物质至少在该部件的某一均质材料中的含量超出 GB/T 26572 规定的限量要求。

×：Indicates that this hazardous substance contained in at least one of the homogeneous materials used for this part is above the limit requirement in GB/T 26572.



#### 环保使用期限 Environmental Protection Use Period

此标识指期限（十年），电子电气产品中的有害物质在正常使用的条件下不会发生外泄或突变，用户使用该电子电气产品不会对环境造成严重污染或对其人身、财产造成严重损害的期限。

This logo refers to the period (10 years) during which the hazardous substances in electronic and electrical products will not leak or mutate so that the use of these [substances] will not result in any severe environmental pollution, any bodily injury or damage to any assets.





2017 © Gibson Innovations Limited. All rights reserved.

This product has been manufactured by, and is sold under the responsibility of Gibson Innovations Ltd., and Gibson Innovations Ltd. is the warrantor in relation to this product.

Philips and the Philips Shield Emblem are registered trademarks of Koninklijke Philips N.V. and are used under license.

AJ2000\_93\_UM\_V1.0

