

Register your product and get support at  
[www.philips.com/welcome](http://www.philips.com/welcome)

DBD8010



---

EN User manual	3
ZH-CN 用户手册	47

---

**PHILIPS**

# Contents

<b>1</b>	<b>Important</b>	<b>4</b>
	Safety	4
<b>2</b>	<b>Your Blu-ray Component Hi-Fi System</b>	<b>6</b>
	Feature highlights	6
	Playable media	6
	Product overview	7
<b>3</b>	<b>Before use</b>	<b>10</b>
	Place the product	10
	Connect	10
	Install/replace the batteries of remote control	14
<b>4</b>	<b>Get started</b>	<b>14</b>
	Turn on	14
	Demonstrate features	15
	Set clock	15
	Find the correct video input channel	15
	Use the home menu	15
	Navigate through a menu	16
	Select a menu display language	16
	Store FM radio stations automatically	16
<b>5</b>	<b>Play a disc</b>	<b>17</b>
	Basic operations	17
	Play a Blu-ray 3D video	17
	Play copied files	18
<b>6</b>	<b>Play from a USB storage device</b>	<b>20</b>
	Basic operations	20
	Play a musical slideshow	20
	Play DivX <sup>®</sup> videos	21
<b>7</b>	<b>Optional control</b>	<b>21</b>
	Video	21
	Music	22
	Photo	22
<b>8</b>	<b>Browse iPod/iPhone/iPad</b>	<b>22</b>
	Compatible iPod/iPhone/iPad	22
	Load the iPod/iPhone/iPad	22
	Use the playback interface of iPod/iPhone/iPad	23
	Use the playback interface of this product	23
	Charge the iPod/iPhone/iPad	24
	Remove the iPod/iPhone/iPad	24
<b>9</b>	<b>Use the network</b>	<b>25</b>
	Connect and set up	25
	Access online media sources	27
	Access local media sources	28
<b>10</b>	<b>Listen to FM radio</b>	<b>28</b>
	Tune to a radio station	28
	Program radio stations automatically	28
	Program radio stations manually	29
	Tune to a preset radio station	29
<b>11</b>	<b>Setup</b>	<b>29</b>
	Video setup	30
	Audio setup	30
	Network setup	30
	EasyLink setup	31
	Preference setup	31
	Advanced setup	32
<b>12</b>	<b>Use Philips EasyLink</b>	<b>33</b>
	One-touch play	33
	One-touch standby	33
	Map the devices to the audio inputs	34
<b>13</b>	<b>Upgrade the firmware</b>	<b>35</b>
	Register your product	35
	Check the current software version	35
	Upgrade firmware via the Internet	35
	Upgrade firmware via the USB port	36
<b>14</b>	<b>Adjust sound</b>	<b>36</b>
	Adjust volume level	36
	Adjust bass level	36
	Adjust treble level	36
	Select automatic loudness control	36
	Mute sound	37
	Listen through headphone	37
<b>15</b>	<b>Additional Information</b>	<b>37</b>
	Adjust the brightness of display panel	37
	Set alarm timer	37
	Set the sleep timer	38
	Control by your iPhone	38
	Care	38
<b>16</b>	<b>Specifications</b>	<b>39</b>
<b>17</b>	<b>Troubleshooting</b>	<b>40</b>
<b>18</b>	<b>Notice</b>	<b>42</b>
	Disposal of your old product and batteries	42
	Copyright notice	42
	Trademark notice	42
<b>19</b>	<b>Glossary</b>	<b>44</b>

# 1 Important

Read and understand all instructions before you use this product. If damage is caused by failure to follow the instructions, the warranty does not apply.

---

## Safety

### Risk of electric shock!

- Never expose the product and accessories to rain or water. Never place liquid containers, such as vases, near the product. If liquids are split on or into the product, disconnect it from the power outlet immediately. Contact Philips Consumer Care to have the product checked before use.
- Never place the product and accessories near naked flames or other heat sources, including direct sunlight.
- Never insert objects into the ventilation slots or other openings on the product.
- Where the mains plug or an appliance coupler is used as the disconnect device, it shall remain readily operable.
- Disconnect the product from the power outlet before lightning storms.
- When you disconnect the power cord, always pull the plug, never the cable.

### Risk of short circuit or fire!

- Before you connect the product to the power outlet, make sure that the power voltage matches the value printed on the back of the product.
- Avoid applying pressure on the power plugs. Loose power plugs can cause arcing or fire.

### Risk of injury or damage to the product!

- To avoid exposure to laser radiation, do not disassemble.
- Do not touch the optical lens inside the disc compartment.

- Never place the product or any objects on power cords or on other electrical equipment.
- If the product is transported in temperatures below 5°C, unpack the product and wait until its temperature matches room temperature before connecting it to the power outlet.

### Risk of overheating!

- Never install this product in a confined space. Always leave a space of at least four inches around the product for ventilation. Make sure that curtains or other objects never cover the ventilation slots on the product.

### Risk of contamination!

- Remove the battery if flat or if the remote control is not to be used for a long time.
- Batteries contain chemical substances. They should be disposed of properly.

### Risk of swallowing batteries!

- The product/remote control may contain a coin type battery, which can be swallowed. Keep the battery out of reach of children at all times!

---

## Hearing safety

### Listen at a moderate volume.

- Using headphones at a high volume can impair your hearing. This product can produce sounds in decibel ranges that may cause hearing loss for a normal person, even for exposure less than a minute. The higher decibel ranges are offered for those that may have already experienced some hearing loss.
- Sound can be deceiving. Over time your hearing 'comfort level' adapts to higher volumes of sound. So after prolonged listening, what sounds 'normal' can actually be loud and harmful to your hearing. To guard against this, set your volume to a safe level before your hearing adapts and leave it there.

**To establish a safe volume level:**

- Set your volume control at a low setting.
- Slowly increase the sound until you can hear it comfortably and clearly, without distortion.

**Listen for reasonable periods of time:**

- Prolonged exposure to sound, even at normally 'safe' levels, can also cause hearing loss.
- Be sure to use your equipment reasonably and take appropriate breaks.

**Be sure to observe the following guidelines when using your headphones.**

- Listen at reasonable volumes for reasonable periods of time.
- Be careful not to adjust the volume as your hearing adapts.
- Do not turn up the volume so high that you can't hear what's around you.
- You should use caution or temporarily discontinue use in potentially hazardous situations.

**Note**

- The type plate is located on the bottom of the product.

# 2 Your Blu-ray Component Hi-Fi System

Congratulations on your purchase, and welcome to Philips! To fully benefit from the support that Philips offers (e.g. product software upgrade), register your product at [www.philips.com/welcome](http://www.philips.com/welcome).

If you contact Philips, you will be asked for the model and serial number of this product. The model number and serial number are on the bottom or back of this product. Write the numbers here:

Model No. \_\_\_\_\_

Serial No. \_\_\_\_\_

---

## Feature highlights

For optimal performance, it is recommended to regularly update the firmware.

### High-Definition entertainment

Watch high-definition content disc with HDTV (High Definition Television). Connect it through a high speed HDMI cable (1.3 or category 2). You can enjoy excellent picture quality up to 1080p resolution with the frame rate of 24 frames per second with progressive scan output.

### BD-Live

Connect this player to the movie studios website via the LAN port or external Wi-Fi to access a variety of up-to-date content (e.g. refreshed previews and exclusive special features).

---

## Playable media

This product can play:


- **Disc**
  - BD-Video, BD-R/RE2.0
  - DVD, DVD-Video, Video CD, SVCD, Audio CD
  - DVD+R/+RW, DVD-R/-RW, DVD+R/-R DL (Dual Layer), CD-R/-RW (Maximum number of files: 3000)
- **File**
  - Video: .avi, .divx, .mkv, .wmv, .rm, .rmvb, .mpg, .mpeg
  - Audio: .mp3, .wma, .aac, .mka
  - Picture: .jpg, .jpeg, .gif, .png
- **USB storage device**
  - Compatibility: Hi-Speed USB (2.0)
  - Class support: MSC (Mass Storage Class)
  - File system: FAT16, FAT32, NTFS
  - Maximum number of albums/folders: 3000
  - Maximum level of directory: 10
- **iPod, iPhone, and iPad**
  - iPad 2
  - iPad
  - iPhone 4
  - iPhone 3GS
  - iPhone 3G
  - iPod nano (4th, 5th, and 6th generation)
  - iPod touch (2nd, 3rd, and 4th generation)
  - iPod classic

---

## Region codes

You can play discs with the following region codes.

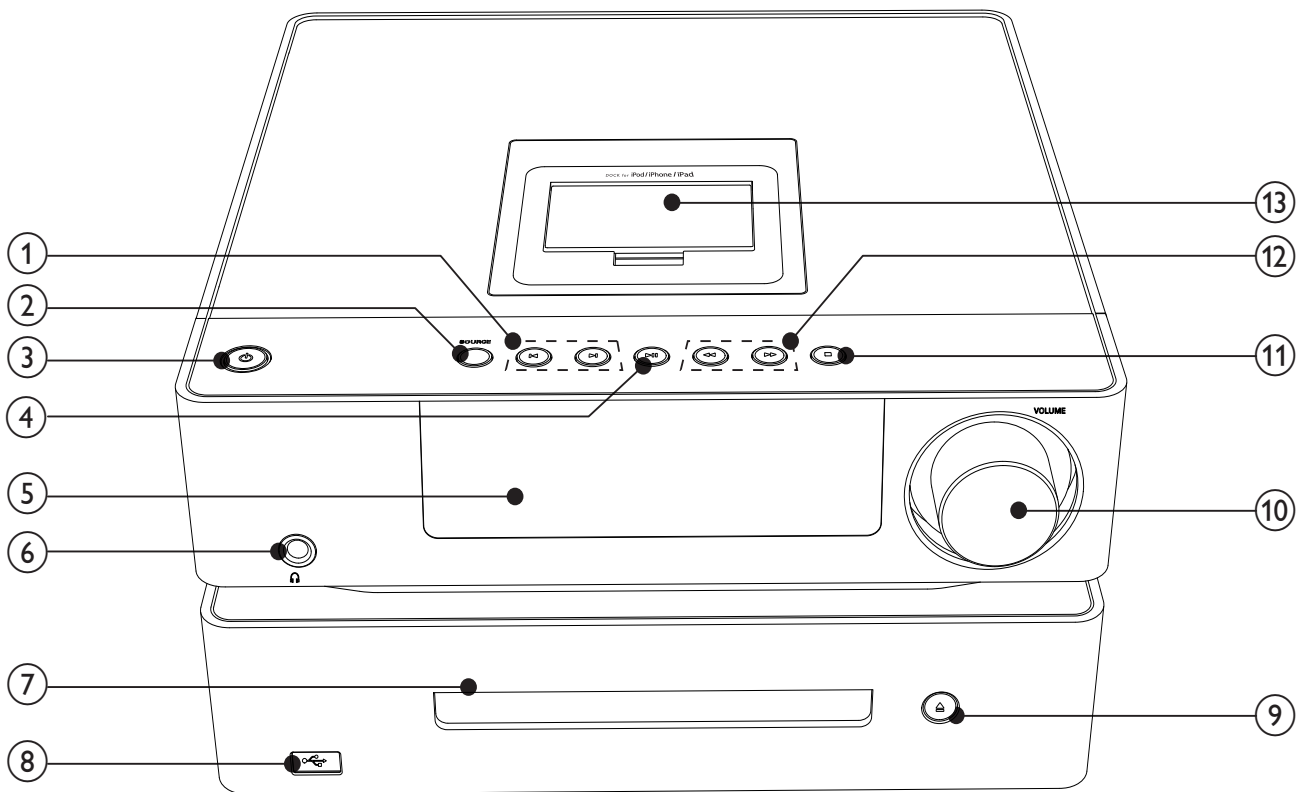
---

DVD	Blu-ray	Countries
 		China

---

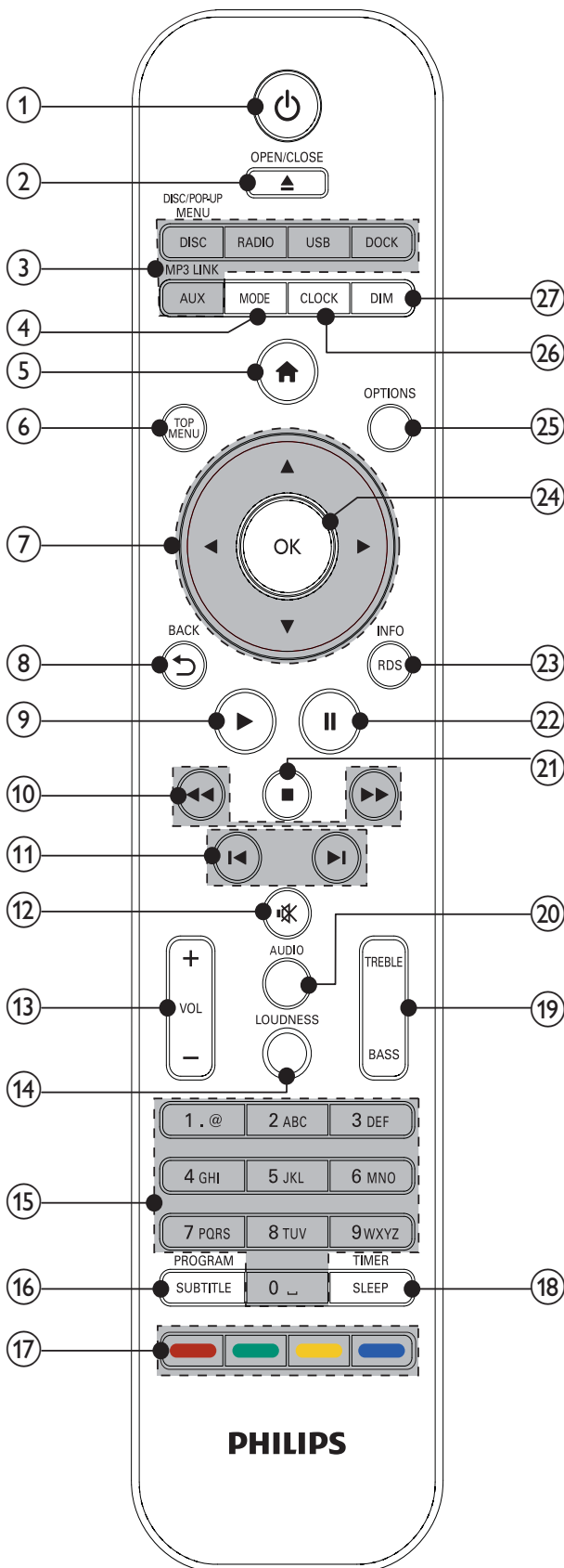
# Product overview

## Main unit



- |  |  |
|--|--|
| <p>① <b>⏮ / ⏭</b></p> <ul style="list-style-type: none"> <li>• Skip to the previous/next track, title, chapter, or file.</li> <li>• Select a preset radio station.</li> </ul> <p>② <b>SOURCE</b></p> <ul style="list-style-type: none"> <li>• Select a source.</li> </ul> <p>③ <b>⏻</b></p> <ul style="list-style-type: none"> <li>• Switch this product between working mode, normal standby mode, and Eco Power standby mode.</li> </ul> <p>④ <b>▶   </b></p> <ul style="list-style-type: none"> <li>• Start, pause, or resume play.</li> </ul> <p>⑤ <b>Display panel</b></p> <ul style="list-style-type: none"> <li>• Display current status.</li> </ul> <p>⑥ <b>🎧</b></p> <ul style="list-style-type: none"> <li>• Headphone socket.</li> </ul> <p>⑦ <b>Disc compartment</b></p> | <p>⑧ <b>🔌</b></p> <ul style="list-style-type: none"> <li>• USB socket.</li> </ul> <p>⑨ <b>▲</b></p> <ul style="list-style-type: none"> <li>• Eject or close the disc compartment.</li> </ul> <p>⑩ <b>VOLUME</b></p> <ul style="list-style-type: none"> <li>• Adjust the time and volume level.</li> </ul> <p>⑪ <b>■</b></p> <ul style="list-style-type: none"> <li>• Stop play.</li> </ul> <p>⑫ <b>⏮ / ⏭</b></p> <ul style="list-style-type: none"> <li>• Search fast backward or forward.</li> </ul> <p>⑬ <b>DOCK for iPod/iPhone/iPad</b></p> <ul style="list-style-type: none"> <li>• Connect to an iPod, iPhone, or iPad.</li> </ul> |
|--|--|

## Remote control



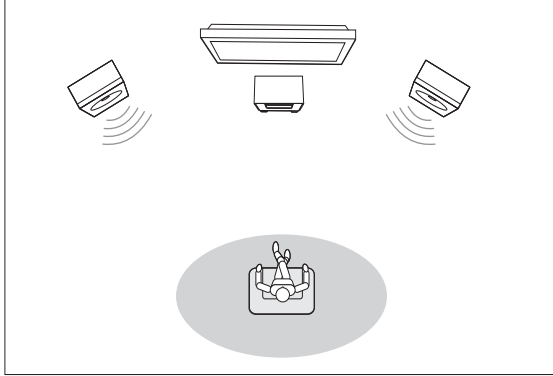
- ①
  - Switch this product between working mode, normal standby mode, and Eco Power standby mode.
  - When EasyLink is enabled, press and hold for three seconds to turn all connected HDMI CEC compliant devices to standby mode.
- ② **OPEN/CLOSE**
  - Eject or close the disc compartment.
- ③ **Source selection buttons**
  - **DISC/POP-UP MENU**: Play a disc; access or exit the pop-up menu of BD videos; access or exit the disc menu of DVD videos.
  - **RADIO**: Listen to FM radio stations.
  - **DOCK**: Browse media files stored on your iPod/iPhone/iPad.
  - **USB**: Browse media files stored on a USB storage device.
  - **AUX/MP3 LINK**: Select the audio input from the **AUX IN** sockets or the **MP3 LINK** socket.
- ④ **MODE**
  - Select a play mode: normal play, repeat, or shuffle.
- ⑤
  - Access the home menu.
- ⑥ **TOP MENU**
  - **BD**: Display the top menu.
  - **DVD**: Display the title menu.
- ⑦
  - Navigate through the menus.
  - Tune to a radio station.
  - : Adjust the bass or treble level.
- ⑧ **BACK**
  - Return to the previous menu.
  - Erase a program.
- ⑨
  - Start or resume play.
- ⑩
  - Search fast backward or forward.

- ⑪ **⏮ / ⏭**
- Skip to the previous or next title, chapter, track, or file.
  - Select a preset radio station.
- ⑫ **🔇**
- Mute or restore volume.
- ⑬ **VOL +/-**
- Adjust the time and volume level.
- ⑭ **LOUDNESS**
- Enable or disable the feature of automatic loudness control.
- ⑮ **Keypad**
- Select an item to play.
  - Enter numbers, letters, and symbols.
- ⑯ **PROGRAM/SUBTITLE**
- Program radio stations.
  - Select an available subtitle or hide the subtitle.
- ⑰ **Color buttons**
- For BD-Live, select tasks or options.
  - Switch sources: the red button for disc source, the green one for **iPod/iPhone/iPad** dock, the yellow one for help information, and the blue one for **AUX IN** or **MP3 LINK**.
- ⑱ **SLEEP/TIMER**
- Set the alarm timer or sleep timer.
- ⑲ **TREBLE/BASS**
- Activate the adjustment of treble/bass level.
- ⑳ **AUDIO**
- Select an audio channel or audio language.
- ㉑ **■**
- Stop play.
- ㉒ **⏸**
- Pause play.
- ㉓ **RDS/INFO**
- Display the current status or the media information.
- ㉔ **OK**
- Confirm an entry or selection.
  - In FM mode, switch the sound setting between stereo and monophonic.
- ㉕ **OPTIONS**
- Access the options of play control.
- ㉖ **CLOCK**
- Set the clock.
  - Display the set clock.
- ㉗ **DIM**
- Select a brightness level for the display panel on the main unit.



# 3 Before use

## Place the product



- 1 Place the product near the TV.
- 2 Place the speakers at equal distance from the TV and at an angle of approximately 45 degrees from the listening position.

### Note

- To avoid magnetic interference or unwanted noise, never place this product too close to any radiation devices.

## Connect

Make the following connections to use this product.

### Note

- Refer to the type plate at the back or bottom of the product for identification and supply ratings.
- Before you make or change any connections, make sure that all the devices are disconnected from the power outlet.
- The **DEMO** jack is only applicable to the demo unit that is not included in the apparatus. Do not attempt to connect any other device to the apparatus through this jack.

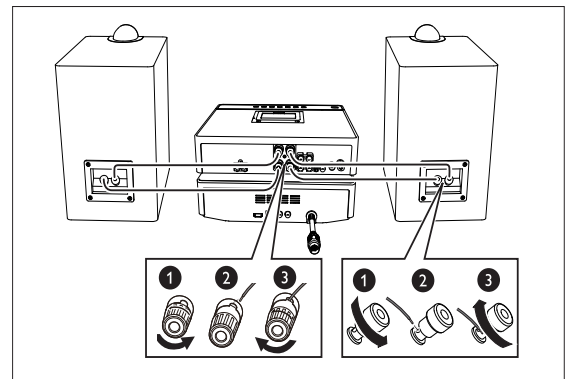
## Connect speakers

### Note

- Fully insert the stripped portions of each speaker cable into the connectors.
- For optimal sound, use the supplied speakers only.
- Connect speakers only with impedance that is the same or higher than that of the supplied speakers.

Two speaker cables are supplied. Each speaker cable has two strands.

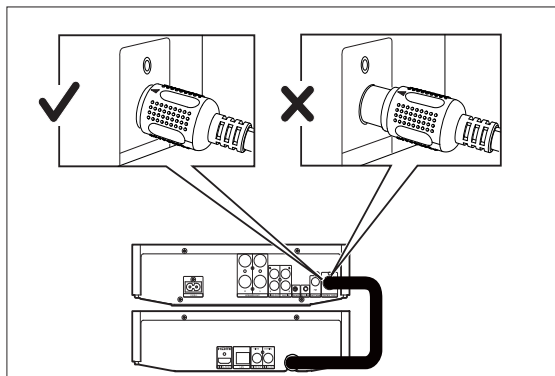
- the golden brown strand for the connectors marked with “+”
- the silvery strand for the connectors marked with “-”



- 1 Unscrew the connectors for speaker cable on this product and the speakers.
- 2 Connect a speaker cable to the left speaker and the **SPEAKER OUT L (+/-)** connectors on this product.
- 3 Screw the connectors to secure the cable.
- 4 Connect the other speaker cable to the right speaker and the **SPEAKER OUT R (+/-)** connectors on this product.
- 5 Screw the connectors to secure the cable.

## Connect the control cable

Connect the control cable connector to the **CONTROL CABLE** socket.



### Note

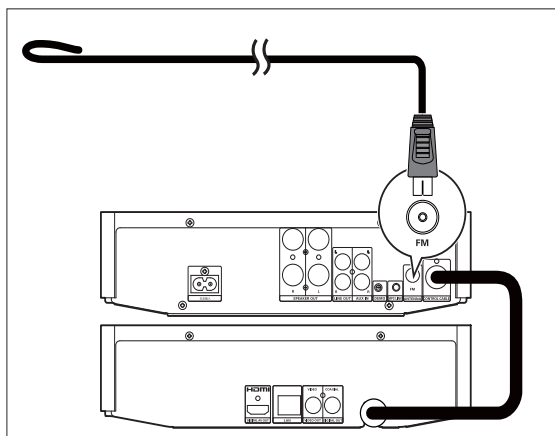
- Connect the control cable correctly and tightly to avoid abnormal performance.

## Connect the FM antenna

### Tip

- For optimal reception, fully extend and adjust the position of the antenna.
- For better FM stereo reception, connect an outdoor FM antenna to the **FM ANTENNA** socket.
- This product does not support MW radio reception.

Connect the supplied FM wire antenna to the **FM ANTENNA** socket on this product.

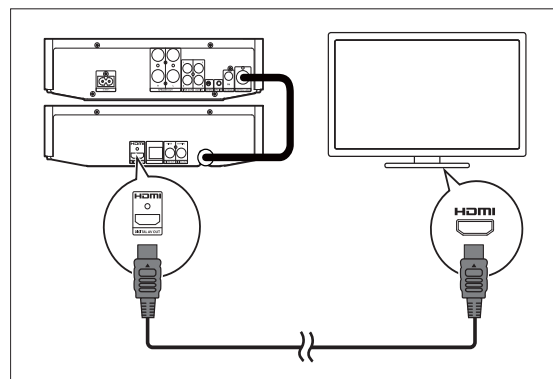


## Connect video/audio cables

Select the best video connection that the TV can support.

- **Option 1:** Connect to the HDMI jack (for an HDMI, DVI or HDCP-compliant TV).
- **Option 2:** Connect to the composite video jack (for a standard TV).

### Option 1: Connect to the HDMI jack



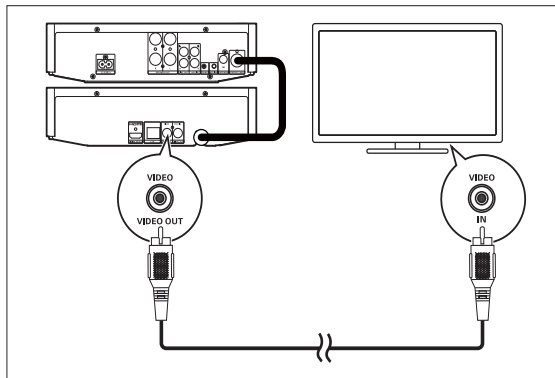
Connect an HDMI cable (not supplied) to:

- the **HDMI (DIGITAL AV OUT)** jack on this product.
- the HDMI input jack on the TV.

### Tip

- If the TV has a DVI connector only, connect via an HDMI/DVI adaptor. Connect an audio cable for sound output.
- If this product connects to a TV compatible with 1080p or 1080p/24Hz, Philips recommends HDMI category 2 cable, also known as High Speed HDMI cable, for optimal video and audio output.
- This type of connection provides the best picture quality.

## Option 2: Connect to the composite video jack



- 1 Connect a composite video cable to:
  - the **VIDEO (VIDEO OUT)** jack on this product.
  - the VIDEO input jack on the TV.
- 2 Connect the audio cables to:
  - the **LINE OUT L/R** jacks on this product.
  - the AUDIO input jacks on the TV.



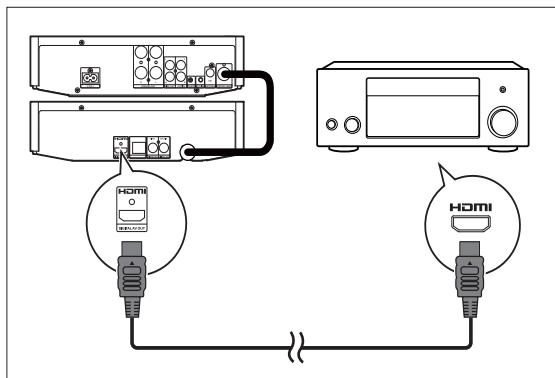
### Tip

- The video input jack on the TV might be labeled as AV IN, VIDEO IN, COMPOSITE or BASEBAND.

## Route audio to other devices

You can route the audio from this product to other devices.

## Connect to an HDMI-compliant AV receiver/amplifier



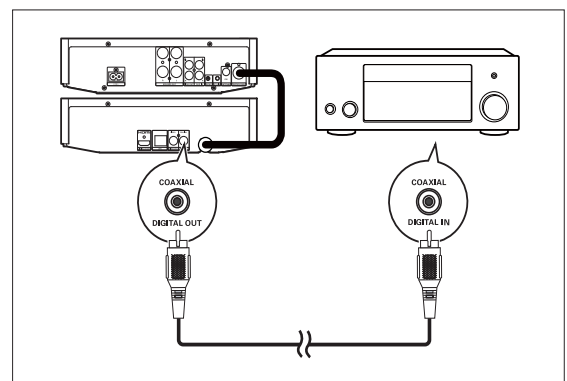
- Connect an HDMI cable (not supplied) to:
- the **HDMI (DIGITAL AV OUT)** jack on this product.
  - the HDMI jack input jack on the device.



### Tip

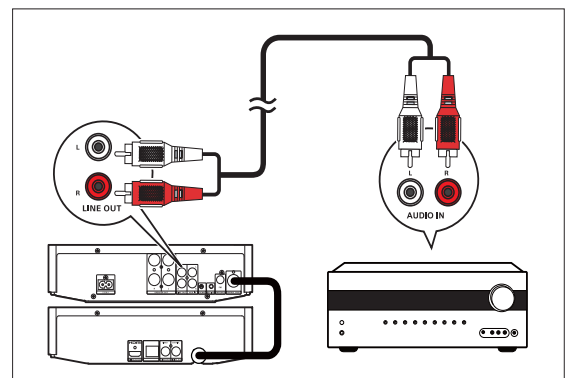
- The HDMI connection provides the best audio quality.

## Connect to a digital AV amplifier/receiver



- Connect a coaxial cable (not supplied) to:
- the **COAXIAL (DIGITAL OUT)** jack on this product.
  - the COAXIAL/DIGITAL input jack on the device.

## Connect an analogue stereo system



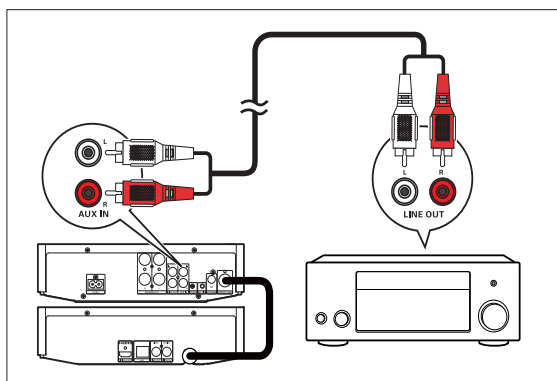
- Connect the audio cable to:
- the **LINE OUT L/R** jacks on this product.
  - the audio input jacks on the device.

## Route audio from other devices

You can route audio from an external device to this product.

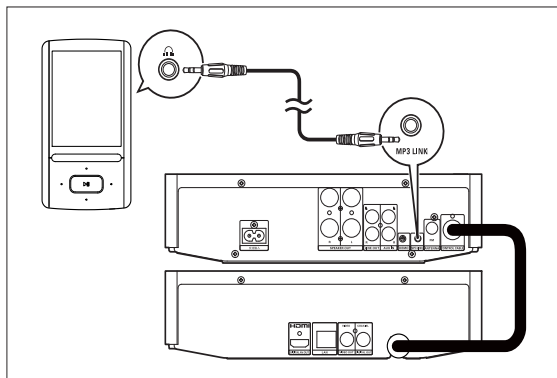
Connect an audio cable to:

- the **AUX IN L/R** sockets on this product.
- the audio output sockets on the external device (for example, audio player).



Connect an MP3 Link cable to:

- the **MP3 LINK** socket on this product.
- the headphone socket on the external device (for example, MP3 player).

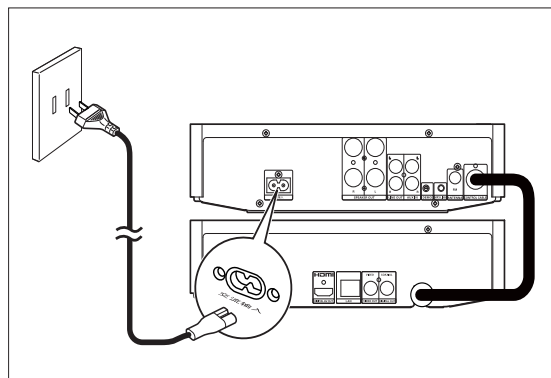


Press **MP3 LINK/AUX** to select the audio input through the **MP3 LINK** socket or the **AUX IN L/R** sockets.

## Connect power

### ! Caution

- Risk of product damage! Make sure that the power supply voltage corresponds to the voltage printed on the back or the underside of the product.
- Before you connect the AC power cord, make sure that you have completed all other connections.



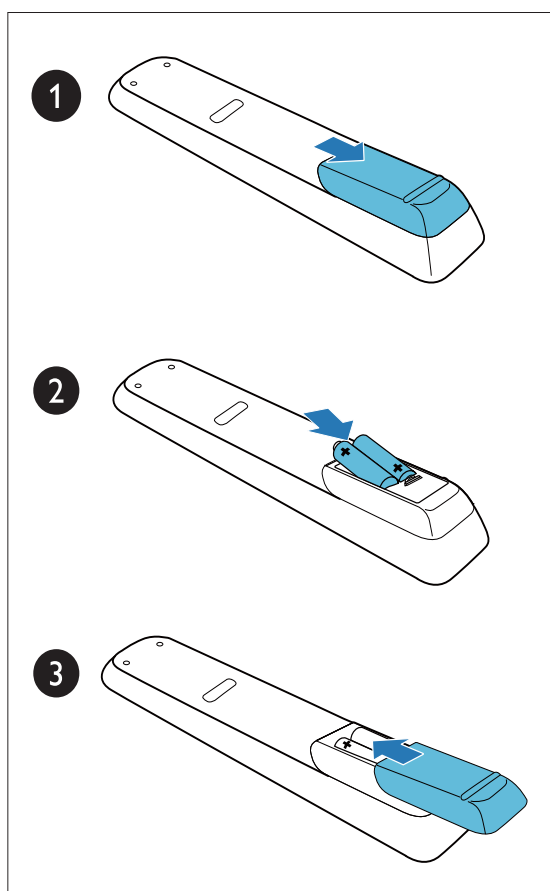
Connect the AC power cord to:

- the 交流输入 socket on this product.
- the wall power socket.

## Install/replace the batteries of remote control

### Note

- Risk of explosion! Keep batteries away from heat, sunshine or fire. Never discard batteries in fire.
- If the remote control is not to be used for a long time, remove the batteries.



- 1 Press and push the battery compartment cover to slide it open.
- 2 Insert two AAA batteries with correct polarity (+/-) as indicated.
- 3 Push and slide back the battery compartment cover.

## 4 Get started

### Turn on

#### Note

- Make sure that you have turned on the connected TV and switched it to the correct video input channel.

Press  $\odot$ .

↳ [PLS WAIT...] (please wait) is displayed.

↳ Ten seconds later, this product switches to the last selected source.

#### For the first time use

After you turn on this product, an interface prompts you to select a language for on-screen menus.

- 1 Press  $\blacktriangle$  /  $\blacktriangledown$  to select a language.
- 2 Press **OK** to confirm.

#### Tip

- You can select the language for on-screen menus later. (See "Get started" > "Select a menu display language")

### Switch modes

#### Automatically switch the modes:

- After this product stays inactive for 30 minutes, it automatically switches to normal standby mode.
- After this product stays in normal standby mode for 10 seconds, it automatically switches to eco-power standby mode.

#### Manually switch the modes:

- Press and hold  $\odot$  to switch this product:
  - from working mode or normal standby mode to eco-power standby mode.
  - from eco-power standby mode to normal standby mode.
- Press  $\odot$  to switch this product
  - between working mode and a standby mode.

## Demonstrate features

- 1 In normal standby mode, press and hold **■** for two seconds.
  - **[DEMO ON]** is displayed, and then feature names scroll on the display panel one by one.
- 2 To exit the feature demonstration, press and hold **■** for two seconds.

## Set clock

- 1 In standby mode, press and hold **CLOCK** to activate the clock setting mode.
  - ↳ **[CLOCK SET]** is displayed, and then **[CLOCK 24HR]** (24-hour time format).
- 2 Press **VOL +/-** (or **▲▼**) to select **[CLOCK 24HR]** or **[CLOCK 12HR]** (12-hour time format), and then press **CLOCK** to confirm.
  - ↳ The hour digits begin to blink.
- 3 Press **VOL +/-** (or **▲▼**) to set the hour.
- 4 Press **CLOCK** to confirm.
  - ↳ The minute digits begin to blink.
- 5 Press **VOL +/-** (or **▲▼**) to set the minute.
- 6 Press **CLOCK** to confirm.
  - ↳ The set clock is displayed.

## Find the correct video input channel

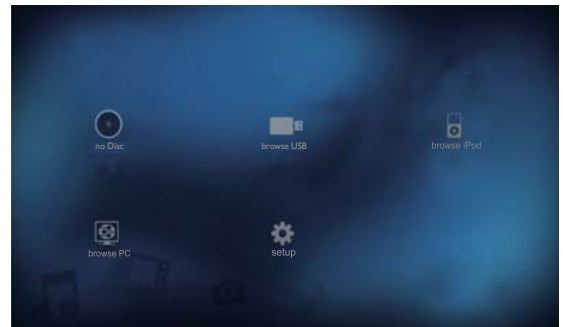
- 1 Turn on this product.
- 2 Press **DISC** to select the disc source.
- 3 Turn on the TV and switch to the correct video-in channel.

### Note

- See your TV user manual on how to switch between video-in channels.

## Use the home menu

- 1 Press **▲** to display the home menu.



- 2 Press **▲▼◀▶** to select an icon, and then press **OK**.
  - **● [play Disc]**: Play a disc
  - **■ [browse USB]**: Browse media files stored on a USB storage device
  - **📱 [browse iPod]**: Browse iPod/iPhone/iPad content on TV
  - **💻 [browse PC]**: Browse media files that are shared on your computer
  - **⚙️ [Setup]**: Access the setup menu

## Navigate through a menu

When a menu is displayed, press the buttons on the remote control to navigate through.

Button	Action
▲ ▼	Move up or down.
◀ ▶	Move left or right.
OK	Access the lower-level menu, or confirm the selection.
	Enter numbers, letters, and symbols.

## Select a menu display language

### Note

- If this product is connected to an HDMI CEC compliant TV, skip this setting. It switches automatically to the on-screen menu language same as your TV setting (if the language set on TV is supported by this product).

- In the home menu, select [Setup] and press OK.
- Select [Preference], and then press OK.
- Select [Menu language], and then press OK.

Video	Menu language	Auto (ENG)
Audio	Audio Subtitle	English (ENG)
Network	Disc Menu	Off
EasyLink	Parental Control	English (ENG)
Preference	Screen Saver	Off
Advanced	Auto Subtitle Shift	On
	Change Password	On
	Display panel	100%
	Auto Standby	On
	VCD PBC	On

- The language options may vary from different regions.

- Press ▲ ▼ to select a language, and then press OK.

## Store FM radio stations automatically

If no FM radio stations are stored, the product can store radio stations automatically.

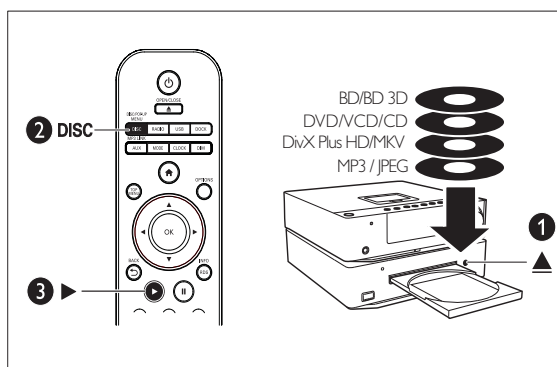
- Turn on this product.
- Press RADIO.
  - ↳ [PRESS PLAY--STOP CANCEL] (press the play button ▶ to start automatic installation, or press ■ to cancel) is displayed.
- Press ▶.
  - ↳ The product automatically stores radio stations with sufficient signal strength.
  - ↳ After all available radio stations are stored, the first stored radio station is broadcast automatically.

## 5 Play a disc



### Caution

- Risk of damage to the player! During play, never move the product.
- Never put any object other than a disc into the disc compartment.
- Never look at the laser beam inside the player.
- Never play discs with accessories such as disc stabilizer rings or disc treatment sheets.



- 1 Load a disc with its label facing up.
- 2 Press **DISC** to select the disc source.
- 3 Press **▶** (the play button) if the play does not start automatically.



### Note

- If **⊘** is displayed after an operation, it indicates that this operation is unavailable for the current media or at the current time.
- Check disc/file formats supported (see "Your Blu-ray Component Hi-Fi System" > "Playable media").
- If the password entry menu is displayed, enter the password before you can play the locked or restricted disc (see "Setup" > "Preference setup" > [Parental Control]).
- If you pause or stop a disc, the screen saver is activated after 10 minutes of inactivity. To deactivate the screen saver, press any button.
- After you pause or stop a disc and no button is pressed within 30 minutes, this product automatically switches to normal standby mode.

## Basic operations

Button	Function
<b>▶</b> (play)	Start or resume the play.
<b>  </b>	Pause the play.
<b>■</b>	Stop the play.
<b>◀ / ▶</b>	Skip to the previous/next title, chapter, track, or file.
<b>◀◀ / ▶▶</b>	For videos and music, press repeatedly to select a speed for fast backward/forward search.

## Play a Blu-ray 3D video

### Before you start, make sure that:

- the TV is 3D compliant, and connected to this product through HDMI.
- the disc is a Blu-ray 3D disc.
- you have 3D glasses compatible with the TV.
- you have enabled the 3D video output on this product.

- 1 Play a Blu-ray 3D video.
- 2 Put on the 3D glasses for 3D effects.

## Enable the 3D video output

- 1 Press **▲**.
- 2 Select **⚙ [Setup]**, and then press **OK**.
- 3 Select **[Video] > [Watch 3D video] > [Auto]**, and then press **OK**.
  - To disable the 3D video output, select **[Off]**, and then press **OK**. After you disable the 3D video output, you can play a 3D video in 2D.

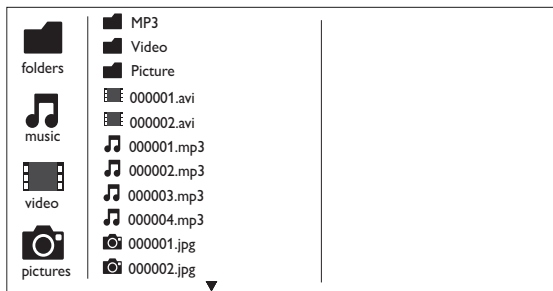


---

## Play copied files

This product can play files that are copied onto a supported disc. (See “**Your Blu-ray Component Hi-Fi System**” > “**Playable media**” for supported disc/file formats)

- 1 Load the disc, and then press **DISC/POP-UP MENU**.
  - ↳ The following interface is displayed.
  - ↳ Music starts play automatically.



- 2 Press **▲▼** to select an icon, and then press **OK**.
  - **Folder icon**: To display all supported folders and files (DivX subtitle files in the format of .srt, .sub, .ssa, .ass, or .sm are not displayed)
  - **Musical note icon**: To display all supported audio files
  - **Video camera icon**: To display all supported video files
  - **Camera icon**: To display all supported photo files
- 3 Press **▲▼** to select a file, and then press **OK** or **▶** (the play button) to start the play.

---

## Play a musical slideshow

This product can play music and photos simultaneously.

### Note

- The disc must contain both music files and photos.

- 1 Play a music file.
- 2 Press **↶ BACK** to return to the play interface.

- 3 Select a photo file.
  - To display the photo on full screen, press **OK**.
- 4 Press **▶** (the play button) to start the slideshow.
- 5 Press **■** to stop the slideshow.
- 6 Press **■** again to stop the music.

---

## Play DivX® videos

DivX® video is a digital media format that retains high quality despite of a high compression rate. You can play DivX® VOD (Video-on-Demand) videos that are rented or purchased from online stores. You can also play non-VOD DivX videos.

---

## Play DivX VOD videos

To play DivX® VOD videos on this product, you need the DivX® VOD code on this product, the DivX Player installed on your computer, and a free DivX Account.

- Find the DivX® VOD code on your product.
  - 1) Press **⬆**.
  - 2) Select **⚙ [Setup]** and press **OK**.
  - 3) Select **[Advanced] > [DivX® VOD Code]**, and then press **OK**.
- If no DivX Player is installed on your computer, download it from [www.divx.com](http://www.divx.com) for free.
- If you have no DivX Account, create one for free through DivX Player that is installed on your computer.

---

## On your computer through DivX Player

- 1 With the DivX® VOD code, register this product under your DivX Account.
  - After the registration, previous videos that you rented or purchased with the same DivX Account can be played on this product.
- 2 Rent or purchase DivX® VOD videos with your DivX Account.

- Transfer the DivX® VOD videos to a supported recordable disc or USB storage device.

### On your product

Play the DivX® VOD videos from the disc or USB storage device.

#### Note

- Go to [www.divx.com](http://www.divx.com) to learn more about downloading and playing DivX videos.

#### Note

- To play DivX DRM protected files from a USB storage device, connect this product to a TV through HDMI.
- The subtitle filename has to be the same as the filename of the DivX video (the file extension excluded).
- The DivX video file and its subtitle file must be saved under the same directory.
- This product supports subtitle files in the following formats: .srt, .sub, .txt, .ssa, .ass, and .smi.

## Play non-VOD DivX videos

- Transfer the videos and subtitle files onto a supported recordable disc or USB storage device.
- Play the video files from the disc or USB storage device.

## Select a subtitle language

During play, press **SUBTITLE** repeatedly to switch between available subtitle languages.

- If the subtitle is not correctly displayed, change the character set that supports the DivX subtitle.

## Change the character set

- During play, press **OPTIONS**.
- Select **[Character Set]** and press **OK**.
- Select a character set and press **OK**.

Character set	Languages
<b>[Standard]</b>	English, Albanian, Danish, Dutch, Finnish, French, Gaelic, German, Italian, Kurdish (Latin), Norwegian, Portuguese, Spanish, Swedish and Turkish
<b>[Chinese]</b>	Simplified Chinese
<b>[Chinese-Traditional]</b>	Traditional Chinese
<b>[Korean]</b>	English and Korean

# 6 Play from a USB storage device

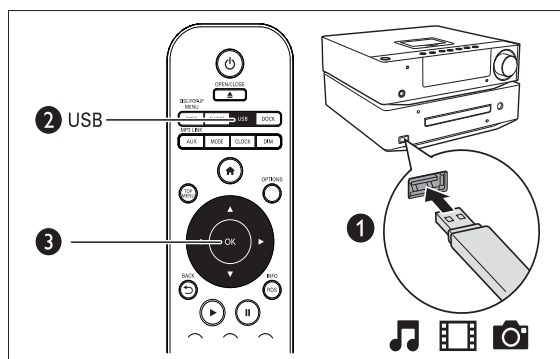
This product can play files that are copied onto a supported USB storage device:

- flash drive
- memory card reader
- HDD (This product can detect only a portable hard disc drive with USB power peak current no more than 500mA.)

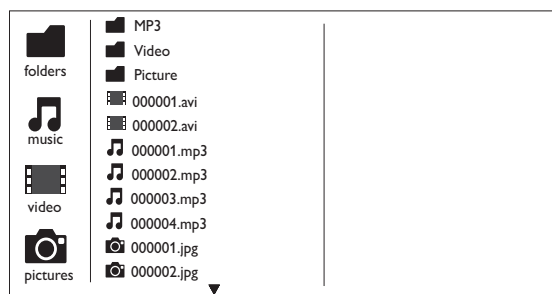
For supported file formats, refer to “Your Blu-ray Component Hi-Fi System” > “Playable media”.

### Note

- Philips does not guarantee compatibility with all USB devices.
- Not all digital cameras are supported. Digital cameras that require PC program installation are not supported.



- 1 Connect the USB storage device to the (USB) socket.
- 2 Press **USB**.
  - ↳ The following interface is displayed.
  - ↳ Music starts play automatically.



- 3 Press **▲▼** to select an icon, and then press **OK**.
  - :To display all supported folders and files (DivX subtitle files in the format of .srt, .sub, .ssa, .ass, or .sm are not displayed)
  - :To display all supported audio files
  - :To display all supported video files
  - :To display all supported photo files
- 4 Press **▲▼** to select a file, and then press **OK** or **▶** (the play button) to start the play.

## Basic operations

Buttons	Functions
	Start or resume the play.
	Pause the play.
	Stop the play.
	Skip to the previous or next file.
	For videos and music, press repeatedly to select a speed for fast backward/forward search.

## Play a musical slideshow

This product can play music and photos simultaneously.

 Note

- The USB storage device must contain both music files and photos.

- 1 Play a music file.
- 2 Press **↩** **BACK** to return to the play interface.
- 3 Select a photo file.
  - To display the photo on full screen, press **OK**.
- 4 Press **▶** (the play button) to start the slideshow.
- 5 Press **■** to stop the slideshow.
- 6 Press **■** again to stop the music.

---

## Play DivX<sup>®</sup> videos

DivX<sup>®</sup> video is a digital media format that retains high quality despite of a high compression rate. You can play DivX<sup>®</sup> VOD (Video-on-Demand) videos that are rented or purchased from online stores. You can also play non-VOD DivX videos.

 Note

- Refer to “**Play a disc**” > “**Play recorded files**” > “**Play DivX<sup>®</sup> videos**” for details.

# 7 Optional control

During play, press **OPTIONS** to access more options for play control.

---

## Video

Access more options during video play.

- **[Audio Language]**: Select an audio language.
- **[Subtitle Language]**: Select a subtitle language.
- **[Subtitle Shift]**: Change the subtitle position on the screen. Press **▲** **▼** to change the subtitle position.
- **[Info]**: Display play information.
- **[Character Set]**: Select a character set that supports the DivX video subtitle (only for DivX videos).
- **[Time Search]**: Skip to a specific time via the numeric buttons on the remote control.
- **[Titles]**: Select a title.
- **[Chapters]**: Select a chapter.
- **[Angle List]**: Select a camera angle.
- **[Menus]**: Display a disc menu.
- **[PIP Selection]**: Display a picture-in-picture window (only for Blu-ray discs that support BonusView).
- **[Zoom]**: Zoom into a video picture. Press **◀▶** to select a zoom factor.
- **[Repeat]**: Repeat a chapter or title.
- **[Repeat A-B]**: Mark two points within a chapter for repeat play, or turn off repeat mode.
- **[Picture Settings]**: Select a predefined color setting.





 Note

- Available video options depend on the video source.

---

## Music



Press **OPTIONS** repeatedly to cycle through the following options.

- : Repeat the current track.
-  / : Repeat all the tracks in the current album/disc.
- : Play audio tracks in a random loop.
- Return to normal play.

---

## Photo

Access more options during slideshow.

- **[Rotate +90]**: Rotate a photo 90 degrees clockwise.
- **[Rotate -90]**: Rotate a photo 90 degrees counter-clockwise.
- **[Zoom]**: Zoom into a photo. Press   to select a zoom factor.
- **[Info]**: Display available information about the current photo.
- **[Duration per slide]**: Set a time interval between two photos.
- **[Slide Animation]**: Select a transition effect for photos.
- **[Picture Settings]**: Select a predefined color setting.
- **[Repeat]**: Repeat photos in the current folder.

# 8 Browse iPod/iPhone/iPad

This product can play music and videos that are stored on iPod/iPhone/iPad. You can listen to music through the speakers and watch a video on the connected TV.

### Note

- No audio output from the headphone jack in this situation.

---

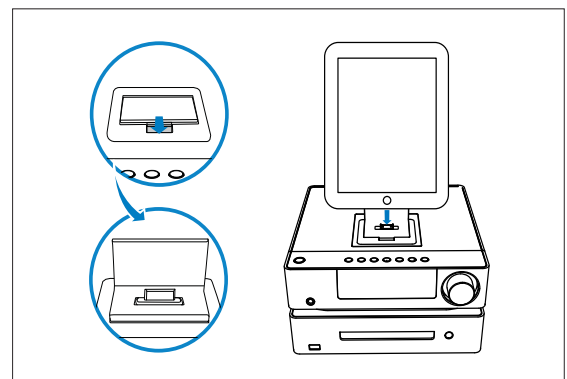
## Compatible iPod/iPhone/iPad

This product supports the following iPod, iPhone and iPad models.

- iPad 2
- iPad
- iPhone 4
- iPhone 3GS
- iPhone 3G
- iPod nano (4th, 5th, and 6th generation)
- iPod touch (2nd, 3rd, and 4th generation)
- iPod classic

---

## Load the iPod/iPhone/iPad



- 1 Release the dock on the top panel.
- 2 Connect the iPod/iPhone/iPad to the dock.

 Note

- Before you connect the iPod/iPhone/iPad, remove accessories from it..

## Use the playback interface of iPod/iPhone/iPad










You can use the playback interface of your iPod/iPhone/iPad to play music and video files.

### Play music files

- 1 Load your iPod/iPhone/iPad securely.
- 2 Press **DOCK** to select the dock source.
- 3 Select and play a music file on your iPod/iPhone/iPad.

### Control play

You can also control the play by the remote control of this product.

Buttons	Functions
 (play)	Start or resume play.
	Pause play.
	Stop play.
	Search backward or forward fast.
 	Skip to the previous or next file.
 <b>BACK</b>	Toggle through category icons on the playback interface of your iPod/iPhone/iPad.
 	Move the cursor up or down.
<b>OK</b>	Confirm a selection.






### Play video files

- 1 Load your iPod/iPhone/iPad securely.
- 2 Press **DOCK** to select the dock source.
- 3 Select and play a video file on your iPod/iPhone/iPad.

- 4 Press **OPTIONS**.
  - ↳ The video picture is displayed on the connected TV.
  - To exit the TV display, press **OPTIONS** again.

### Control play

You can also use the remote control to control the play of video files that are stored on iPod/iPhone.

Buttons	Functions
 (play)	Start or resume play.
	Pause play.
	Stop play.
	Search backward or forward fast.
 <b>BACK</b>	Toggle through category icons on the playback interface of your iPod/iPhone.
<b>OK</b>	Confirm a selection.

 Note

- For iPad, you can only control the play of videos on the iPad screen in this case.

## Use the playback interface of this product

You can use the playback interface of this product to play music and video files.

- 1 Load your iPod/iPhone/iPad securely.
- 2 Press **DOCK** to select the dock source.
- 3 Press **DOCK** again.
  - ↳ The following playback interface is displayed on the TV screen.



- 4 Press ▲▼ to select an icon, and then press **OK**.
  - 🎵: To display all music categories
  - 🎬: To display all video categories
- 5 Select a category and then press **OK**.
- 6 Repeat step 5 to display the file list.
- 7 Select a file and press **OK** to start play.

## Control play

You can control play by the remote control and this product only.

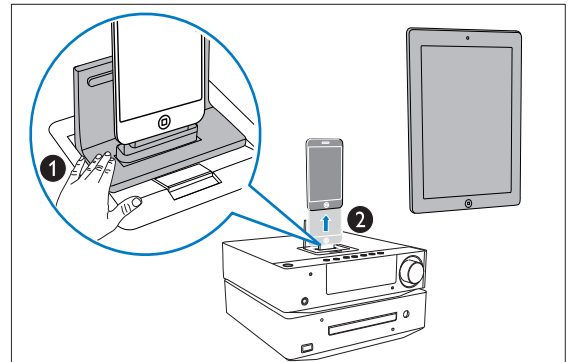
Buttons	Functions
▶ (play)	Start or resume play.
⏸	Pause play.
■	Stop play.
◀◀ / ▶▶	Search backward or forward fast.
⏮ / ⏭	Skip to the previous or next file.
↶ BACK	Return to the previous menu.
▲ / ▼	Move the cursor up or down.
OK	Confirm a selection.

## Charge the iPod/iPhone/iPad

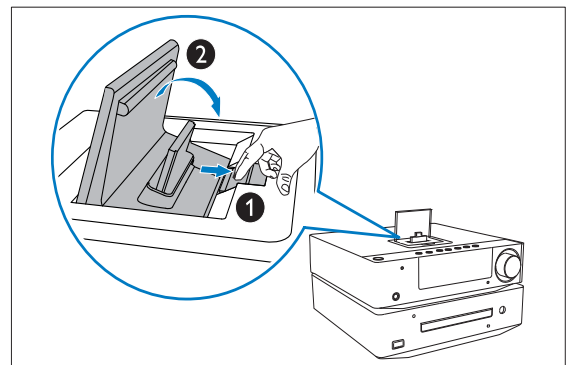
When this product is connected to power, the docked iPod/iPhone/iPad begins to charge.

## Remove the iPod/iPhone/iPad

- 1 Pull the iPod/iPhone/iPad out of the dock.



- 2 Hide the dock.



## 9 Use the network

Connect this product to a LAN (local area network) or the Internet to:

- **Enjoy BD-Live:** Access online bonus contents (applicable to Blu-ray discs that are BD-Live enabled).
- **Browse PC (DLNA):** Stream photos, music, and videos from your computer to this product.
- **Update software:** Upgrade the firmware of this player via the Internet. (Refer to “Upgrade the firmware” > “Upgrade firmware via the Internet”)

### Connect and set up

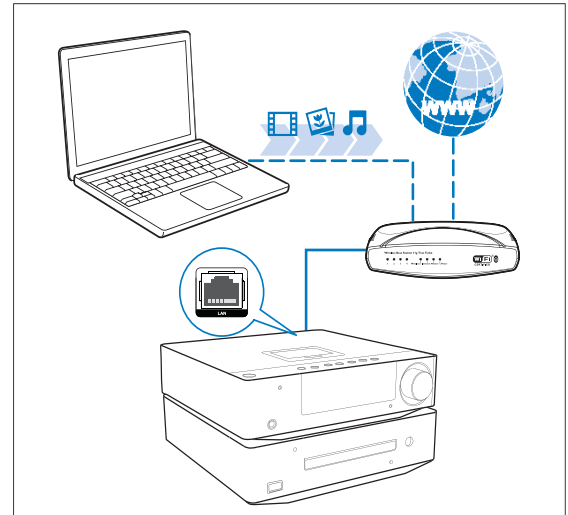
#### Note

- To access the media sources on your computer, connect this product and your computer via the router.
- To access online media sources, connect this product to the Internet via the router.
- After you complete the connection, perform the network setup.

Connect this product to the router through

- wired connection (a network cable), or
- wireless connection (the built-in Wi-Fi module).

### Wired connection



Connect a network cable to

- the **LAN** socket of this product, and
- a LAN port of the router.

### Set up

- 1 Press **⬆**.
- 2 Select **⚙ [Setup]**, and then press **OK**.
- 3 Select **[Network] > [Network Installation]**, and then press **OK**.
- 4 Select **[Wired (Ethernet)]**, and then press **OK**.
- 5 Select **[Auto (recommended)]**.
  - You can also select **[Manual (advanced)]** to configure the network manually.
- 6 Press **OK**.
  - ↳ If the setup succeeds, the message is displayed: **[You have successfully established the network connection.]**
- 7 Select **[Finish]**, and then press **OK**.



## Configure the network manually

- 1 Select **[Manual (advanced)]**, and then press **OK**.
- 2 Select **[IP address]**, and then press **OK**.
- 3 Enter the IP address of this product, select **[Done]**, and then press **OK**.
- 4 Select **[Netmask]**, and then press **OK**.
- 5 Enter the netmask of this network, select **[Done]**, and then press **OK**.
- 6 Select **[Gateway]**, and then press **OK**.
- 7 Enter the IP address of the router; select **[Done]**, and then press **OK**.
- 8 Enter the IP address of DNS server if any.
- 9 Select **[Continue]**, and then press **OK**.  
↳ If the setup succeeds, the message is displayed: **[You have successfully established the network connection.]**
- 10 Select **[Finish]**, and then press **OK**.



### Tip

- For the netmask and IP addresses, check the router configuration or consult the network administrator.

## Text entry

Repeatedly press an alphanumeric button on the remote control to enter a letter, number, or symbol.

English	
1	. - / @ 1 , ' ? ! " ( ) : _ ; + & % * = < > € \$ [ ] { } \ ~ ^ ` #
2	a b c 2 A B C
3	d e f 3 D E F
4	g h i 4 G H I
5	j k l 5 J K L
6	m n o 6 M N O
7	p q r s 7 P Q R S
8	t u v 8 T U V
9	w x y z 9 W X Y Z
0	_ 0

- To enter a symbol, press repeatedly.
- To enter a space, press .
- To delete previous character, press .
- To jump to the next entry field, press (the navigation button for right).



### Tip

- For languages other than English, letters that an alphanumeric button corresponds to may vary.

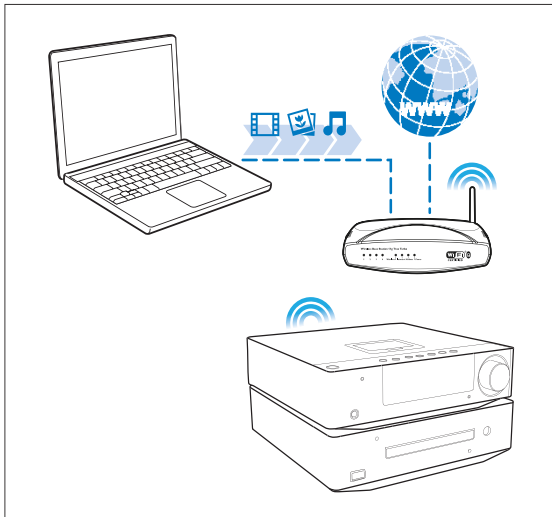
## Wireless connection



### Note

- Make sure that the router supports Wi-Fi connection and the wireless connection is enabled.

Connect this product to the router through the integrated Wi-Fi component.



## Set up

- 1 Press **⬆**.
- 2 Select **⚙ [Setup]**, and then press **OK**.
- 3 Select **[Network] > [Network Installation]**, and then press **OK**.
- 4 Select **[Wireless (Wi-Fi)]**, and then press **OK**.
  - ↳ Available wireless networks are listed.
- 5 Select the target network, and then press **OK**.
  - To connect to an encrypted network, enter the network access password, select **[Done]**, and then press **OK**.
- 6 Select **[Continue]**, and then press **OK** to start network configuration.
- 7 Select **[Auto (recommended)]**.
  - You can also select **[Manual (advanced)]** to configure the network manually.
- 8 Press **OK**.
  - ↳ If the setup succeeds, the message is displayed: **[You have successfully established the network connection.]**
- 9 Select **[Finish]**, and then press **OK**.

## Tip

- Refer to "Use the network" > "Connect and setup" > "Wired connection" > "Configure the network manually" for manual setup.

## Access online media sources

### Note

- Make sure that the router directly connects to the Internet and no dial-up is required on the computer.
- Make sure that you have correctly connected this product to the router and configured the network connection.
- Philips bears no responsibility for content that is provided by any Internet content service provider.

## Enjoy BD-Live

Access exclusive online services, such as movie trailers, games, ringtones, and other bonus contents.

This feature is only applicable to Blu-ray discs that are BD-Live enabled.

- 1 Connect a USB storage device to this product.
- 2 Play a disc that is BD-Live enabled.
- 3 On the disc menu, select the BD-Live icon, and then press **OK**.
  - ↳ BD-Live starts to load. The loading time depends on the disc and the Internet connection.
- 4 On the BD-Live interface, select an item to access.

### Note

- BD-Live services vary from discs and countries.
- When you use BD-Live, data on the disc and this product are accessible for the content provider
- Use a USB storage device with at least 1 GB of free space to store the download.

---

## Access local media sources

### Note

- Make sure that you have connected this product and your computer to the router and correctly configured the network connection.

---

## Browse PC (DLNA)

With this DLNA-certified product that is connected to a LAN network, you can stream photos, music, and videos from a computer to this product.

### Note

- To browse a PC, make sure that a DLNA media server software (such as Windows Media Player 11 or higher) is installed on the PC.

- 1 On the PC through the software of the DLNA media server (such as Windows Media Player 11 or higher),
  - 1) Share my media to this player (see the “Help” document of the media server software).
  - 2) Share files or add files to the library (see the “Help” document of the media server software).
- 2 Press **▲**, and then press **OK**.
- 3 Select **[browse PC]**, and then press **OK**.  
↳ A content browser is displayed.
- 4 Select a file, and then press **OK** to start play.
  - You can control play with the disc features.

# 10 Listen to FM radio

The product can automatically search and store FM radio stations (see “**Get started**” > “**Store radio stations automatically**”). You can also search and store radio stations manually.

---

## Tune to a radio station

- 1 Press **RADIO**.
- 2 Press and hold **◀ / ▶**.  
↳ The radio tunes to a station with strong reception automatically.
- 3 To tune to a weak station, press **▲ / ▼** repeatedly until you find optimal reception.

### Tip

- **[STEREO]** (stereo) is the default sound setting for FM mode.
- In FM mode, you can press **OK** repeatedly to switch between **[STEREO]** (stereo) and **[MONO]** (monophonic).

---

## Program radio stations automatically

### Note

- You can program a maximum of 20 preset radio stations.

Press and hold **PROGRAM** to activate automatic programming.

- ↳ **[AUTO]** (auto) is displayed briefly.
- ↳ All available stations are programmed in the order of waveband reception strength.
- ↳ The first programmed radio station is broadcast automatically.

## Program radio stations manually

### Note

- You can program a maximum of 20 preset radio stations.

- 1 Tune to a radio station.
- 2 Press **PROGRAM** to activate programming.
- 3 Press **◀** / **▶** to allocate a number from 1 to 20 to this radio station, then press **PROGRAM** to confirm.
  - ↳ The preset number and the frequency of the preset station are displayed.
- 4 Repeat the previous steps to program other stations.

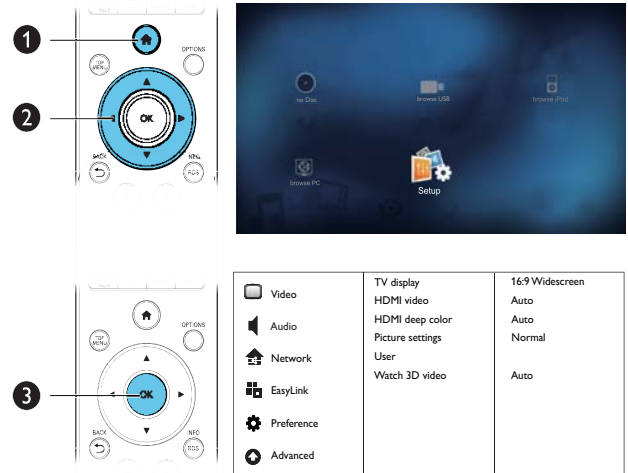
### Note

- To overwrite a programmed station, store another station in its place.

## Tune to a preset radio station

Press **◀** / **▶** to select a preset number that you want.

# 11 Setup



- 1 Press **⌂**.
- 2 Press **▲** **▼** **◀** **▶** to select **⚙ [Setup]**.
- 3 Press **OK**.
  - ↳ The setup menu is displayed.
    - Press **▲** **▼** to select a menu item or setting option.
    - Press **OK** to access the lower-level menu or confirm the selected setting option.
    - Press **↶ BACK** to return to the previous menu.
    - Press **⌂** to return to the home menu.

### Note

- When a menu item is highlighted in gray, it means that its setting cannot be changed at the current state.

## Video setup

Video	TV display	16:9 Widescreen
Audio	HDMI video	Auto
Network	HDMI deep color	Auto
EasyLink	Picture settings	Normal
Preference	User	
Advanced	Watch 3D video	Auto

### [TV Display]

Select a picture display format to fit the TV screen.

### [HDMI Video]

Select an HDMI video resolution.

### [HDMI Deep Color]

Display colors with more shades and hues when the video content is recorded in Deep Color and the TV supports this feature.

### [Picture Settings]

Select a color setting.

### [User]

Customize color settings after you set **[Picture Settings]** as **[User]**.

### [Watch 3D video]

Set to 3D or 2D output when playing a Blu-ray 3D disc. The player must be connected to a 3D TV through HDMI.



### Note

- If you change a setting, make sure that the TV supports the new setting.
- For settings related to HDMI, the TV must be connected through HDMI.
- For the composite connection (via the **VIDEO** connector), select a video resolution of 480i/576i or 480p/576p under **[HDMI Video]** to enable video output.

## Audio setup

Video	Night mode	Auto
Audio	HDMI Audio	Auto
Network	Default sound settings	
EasyLink		
Preference		
Advanced		

### [Night Mode]

Equalize loud sound and soft sound. Enable this feature to watch DVD movies at a low volume at night.

### [HDMI Audio]

Select an HDMI audio output when you connect this product and the TV/audio device with an HDMI cable.

- **[Bitstream]** - If the connected HDMI device supports the appropriate HD audio decoder, the original audio format on the disc is sent. Otherwise, LPCM is sent.
- **[Auto]** - Detect and select the best supported audio format automatically.
- **[Off]** - Disable the audio output from the HDMI socket.

### [Default sound settings]

Restore all the sound-related settings to the default values.

## Network setup

Video	Network Installation	
Audio	View Network Settings	
Network	View Wireless Settings	
EasyLink	Name your product	Philips DBD8010
Preference		
Advanced		

### [Network Installation]

Configure the wired or wireless network connection between this product and the router.

**[View Network Settings]**

Display the current network status.

**[View Wireless Settings]**

Display the current status of wireless connection.

**[Name your Product:]**

Re-name this player for display when this player is connected to a network.

**EasyLink setup**

Video	EasyLink	On
Audio	One Touch Play	On
Network	One Touch Standby	On
EasyLink	System Audio Control	On
Preference	Audio Input Mapping	
Advanced		


**[EasyLink]**

Enable or disable the EasyLink feature.

**[One Touch Play]**

After you enable this feature, the connected HDMI CEC TV automatically switches to the HDMI input channel when you play a disc.

**[One Touch Standby]**

After you enable this feature, you can press and hold  on the remote control of your player to switch all connected HDMI CEC devices to standby mode simultaneously.

**[System Audio Control]**

When you play audio that is routed from the connected device, this product switches to the corresponding audio source automatically.

- **[On]** - Enable System Audio Control. Then proceed to **[Audio Input Mapping]** to scan and map the connected device.
- **[Off]** - Disables System Audio Control.

**[Audio Input Mapping]**

Update the audio input mapping if you connect a new audio device.

**Note**

- You must turn on the HDMI CEC operations on the TV/devices before you can enjoy the EasyLink controls. See the TV/devices manual for details.
- Philips does not guarantee 100% interoperability with all HDMI CEC compliant devices.

**Preference setup**

Video	Menu language	Auto (ENG)
Audio	Audio	English (ENG)
Network	Subtitle	Off
EasyLink	Disc Menu	English (ENG)
Preference	Parental Control	Off
Advanced	Screen Saver	On
	Auto Subtitle Shift	On
	Change Password	
	Display panel	100%
	Auto Standby	On
	VCD PBC	On

**[Menu language]**

Select an on-screen menu language.

**Note**

- If this product is connected to an HDMI CEC compliant TV using an HDMI cable, it switches automatically to the same menu display language as per your TV setting (if the language set on TV is supported by this product).

**[Audio]**

Select an audio language for disc play.

**[Subtitle]**

Select a subtitle language for disc play.

**[Disc Menu]**

Select a language for disc menu.

**Note**

- If the language you have set is not available on the disc, the disc uses its own default language.
- For some discs, the subtitle/audio language can only be changed from the disc menu.

**[Parental Control]**

Restrict access to discs that are unsuitable for children. These types of discs must be recorded with ratings.

To access, enter your last set password or '0000'.

## Note

- Rated discs above the level you set in **[Parental Control]** require a password to be played.
- The ratings are country-dependent. To allow all discs to play, select '8' for DVD-video and BD-Video.
- Some discs have ratings printed on them but are not recorded with ratings. This function has no effect on such discs.

### [Auto Subtitle Shift]

Enable or disable subtitle shift. If enabled, the subtitle position is changed automatically to fit the TV screen (this feature works with some Philips TVs only).

### [Screen Saver]

Enable this feature to protect the TV screen from damage due to over exposure to static image.

### [Change Password]

Set or change the password.

- 1) Press the Numeric buttons to enter the password or your last set password behind **[Current Password:]**. If you forget the password, enter **0000**.
- 2) Enter the new password behind **[New Password:]**.
- 3) Re-enter the password behind **[Confirm New Password:]**.
- 4) Select **[Confirm]** in the menu, and then press **OK**.

### [Display Panel]

Select a brightness level of the front panel display.

### [Auto Standby]

Turn on or off auto standby mode. It is an energy saving feature.

- **[On]** - Switch to standby after 30 minutes of inactivity (for example, in pause or stop mode).
- **[Off]** - Disable auto standby mode.







### [VCD PBC]

Enable the PBC (playback control) feature to display the index menu when you load a VCD 2.0 or SVCD.

### [Sleep Timer]

Enable or disable the sleep timer.

## Advanced setup

 Video	BD-Live Security	Off
 Audio	Enhanced Audio	On
 Network	Software Update	
 EasyLink	Clear Memory	
 Preference	DivX® VOD Code	
 Advanced	Version Info.	
	Restore default settings	

### [BD-Live Security]

Restrict or allow access to BD-Live (only for non-commercial, user-created BD-Live discs).

### [Enhanced Audio]

Enable or disable the audio post-processing at the speaker output.

### [Software Update]

Update the software of this product (if a latest version is available on Philips website) to enhance the performance of this product.

- **[USB]** - Update software from the USB device which is connected to this product.
- **[Network]** - Update software from the Internet.

## Note

- For detailed software updating, see **"Upgrade the firmware"**.

### [Clear memory]

Delete the previous BD-Live download on the USB storage device. A "BUDA" folder is automatically created to store the BD-Live download.

### [DivX® VOD Code]

Display the DivX® registration code and the deregistration code.

### [Version Info.]

Display the software version and the MAC address of this player.

**Tip**

- This information is needed for you to check if a latest software version is available at the Philips website so that you can download and install on this player.

**[Restore default settings]**

Reset all the settings of this player to the factory settings, except for **[Parental Control]** setting.

# 12 Use Philips EasyLink


This player supports Philips EasyLink which uses the HDMI CEC (Consumer Electronics Control) protocol. You can use one single remote control to control EasyLink-compliant devices that are connected through HDMI connectors.

**Note**

- To enable the EasyLink feature, turn on the HDMI CEC operations on the TV and on other devices connected to TV. Refer to the TVs/devices manual for details.

---

## One-touch play

Press  (standby) to turn on this product.

- ↳ The TV (if the TV supports one-touch play) automatically turns on and switches to the correct video-in channel.
- ↳ If a disc is loaded in this product, disc play automatically starts.

---

## One-touch standby

Press and hold  (standby) for more than 3 seconds.

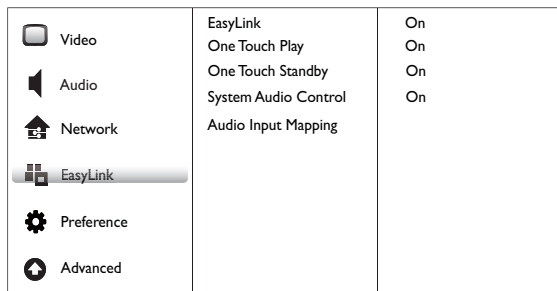
- ↳ All the connected devices (if the device supports one-touch standby) automatically switch to standby.



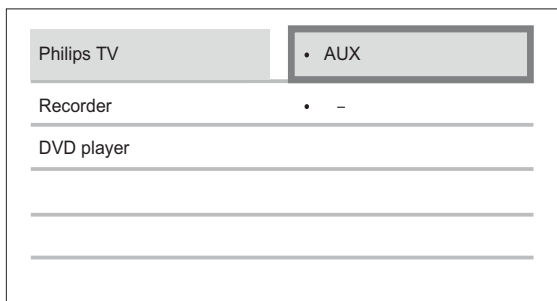
## Map the devices to the audio inputs

### Note

- Before you start, ensure that the audio output of the HDMI TV and other HDMI devices have been connected to the audio input jacks on this product.



- 1 Press **⬆**, select **⚙ [Setup]**, and then press **OK**.
- 2 Select **[EasyLink]**, and then press **▶** (the navigation button for right).
  - **[One Touch Play]** and **[One Touch Standby]** functions are enabled by default.
- 3 Select **[System Audio Control] > [On]**.
- 4 Read the on-screen instructions and press **OK** to select **[Continue]**.
  - ↳ The product scans and displays the valid devices.
- 5 Press **OK** to select **[Continue]**.



- 6 Select a connected device on the left of the menu, and then press **▶**.

- 7 Select the connector that is used for the device, and then press **OK**.
  - ↳ Repeat steps 6 and 7 to map other devices.

- 8 Press **⬆** to exit the menu.

## Update audio mapping from connected devices

If you have already mapped audio from connected devices, you can use this procedure to update your mapping.

- 1 Press **⬆**, select **⚙ [Setup]**, and then press **OK**.
- 2 Select **[EasyLink] > [Audio Input Mapping]**, and then press **OK**.
- 3 Select a connected device, and then press **▶** (the navigation button for right).
- 4 Select the AUX input, and then press **OK**.

### Note

- Philips does not guarantee interoperability with all HDMI CEC devices.

# 13 Upgrade the firmware

## Note

- Power supply must not be interrupted during the upgrade.
- When the firmware upgrade succeeds, all settings are restored to the factory default status, except [**Parental Control**].

## Register your product

- 1 Go to [www.philips.com/welcome](http://www.philips.com/welcome).
- 2 Click the link of "**Register my product**" (the exact wording of this link name may vary in different languages).
- 3 Log in with your account on the prompt web page.
  - If you have no account for Club Philips, create one first on this web page.
- 4 Search your product using "**DBD8010/93**" as the keyword.
- 5 Click the link of search result to access the web page for registering your product.
- 6 Fill in necessary information about this product to complete the registration.
  - ↳ With the registration, you can get information about software update and product support at this website or via your mailbox that is registered as the account for Club Philips.

## Check the current software version

- 1 Press **▲**.
- 2 Select **⚙ [Setup]**, and then press **OK**.
- 3 Select **[Advanced] > [Version Info.]**, and then press **OK**.
- 4 Write down the digits that are behind **[System SW:]**, for example, **1.18.01**.
  - ↳ The version of current software is **V1.18.01**.




## Upgrade firmware via the Internet

Make sure that you have correctly connected this product to the router and configured the network connection. (Refer to "**Use the network**" > "**Connect and set up**")

- 1 Press **▲**, and select **⚙ [Setup]**.
- 2 Select **[Advanced] > [Software Update] > [Network]**.
- 3 Follow the instructions on the TV screen to update the software.
  - ↳ When the update is complete, this player automatically restarts.

---

## Upgrade firmware via the USB port

- 1 Go to [www.philips.com/welcome](http://www.philips.com/welcome).
- 2 Log in with your account for Club Philips.  
↳ Support information about your registered product is displayed.
- 3 Check the latest software version.
- 4 Download the upgrade packet.
  - 1) Unzip the download, and make sure that the unzipped folder is named "UPG\_ALL".
  - 2) Save the "UPG\_ALL" folder in the root directory of a USB storage device.
- 5 Connect the USB storage device to the  (USB) connector on this product.
- 6 Press , select  [Setup], and then press OK.
- 7 Select [Advanced] > [Software Update] > [USB], and then press OK.
- 8 Follow the instructions on the TV screen to complete the upgrade.  
↳ When the upgrade is complete, this product automatically restarts.

# 14 Adjust sound

You can adjust the following sound settings during play.



---

## Adjust volume level

During play, press **VOL +/-** to increase/decrease the volume level.



---

## Adjust bass level

- 1 During play, press **BASS** to enter bass adjustment.
- 2 Press  /  to adjust the bass level.

---

## Adjust treble level

- 1 During play, press **TREBLE** to enter treble adjustment.
- 2 Press  /  to adjust the treble level.

---

## Select automatic loudness control

During play, press **LOUDNESS** to turn on/off automatic loudness control.

The loudness feature enables the product to increase the treble and bass sound effect at low volume automatically (the higher the volume, the lower the treble and bass increase).


---

## Mute sound

During play, press  to mute/resume sound.

---

## Listen through headphone

Plug a headphone into the  socket on the product.

# 15 Additional Information

---

## Adjust the brightness of display panel

In normal standby mode, press **DIM** repeatedly.

---

## Set alarm timer



### Note

- Make sure that you have set the clock correctly.

- 1 In standby mode, press and hold **SLEEP / TIMER**.  
↳ **[TIMER SET]** (set timer) is displayed, and **[DISC SOURCE]** blinks.
- 2 Press **VOL +/-** to select an alarm source: **DISC SOURCE**, **USB DIRECT**, **IPOD SOURCE**, **FM RADIO**, or **PHI PLAYLIST**.
- 3 Press **SLEEP / TIMER** to confirm.  
↳ The hour digits begin to blink.
- 4 Press **VOL +/-** to set the hour.
- 5 Press **SLEEP / TIMER** to confirm.  
↳ The minute digits begin to blink.
- 6 Press **VOL +/-** to set the minute.
- 7 Press **SLEEP / TIMER** to confirm.  
↳ The volume level indicator begins to blink.
- 8 Press **VOL +/-** to set the volume level, then press **SLEEP / TIMER** to confirm.  
↳ An alarm icon is displayed on the right of the display.  
↳ To deactivate/activate the alarm timer, press **SLEEP / TIMER** repeatedly in normal standby mode.

## Note

- When the alarm sounds, you can press **VOL +/-** to adjust volume.
- The alarm timer is not available in MP3 LINK mode.
- To use iPod/iPhone/iPad playlist as the alarm source, create a playlist named "PHILIPS" in your iPod/iPhone/iPad first.
- If no playlist named "PHILIPS" exists in the iPod/iPhone/iPad or the playlist includes no playable track, this product switches the alarm source to iPod/iPhone/iPad.
- If other alarm sources are unavailable, this product switches to FM mode automatically.

## Set the sleep timer

In working mode, press **SLEEP/TIMER** repeatedly to select a set period of time (in minutes).

- ↳ The product turns off automatically after the set period of time.

## Control by your iPhone

With an application installed on your iPhone, you can use it as the remote control for this product.

### What you need

- Download the smartphone control application for Philips from the iTunes store to your iPhone.
- Connect this player to a home network (refer to "Use the network" > "Connect and set up").
- Connect your iPhone to the same home network (refer to the user manual of your iPhone for details).

## Control play

- 1 Insert a disc or USB storage device into this player.
- 2 On the iPhone screen, tap the icon for the smartphone control application.
  - ↳ After the search, the name of this product is displayed.
- 3 Select this product from the iPhone screen.
  - ↳ The iPhone is enabled as a remote control for this product.
  - ↳ The control buttons are displayed on the iPhone screen.
  - ↳ The control functions can vary from play modes.
- 4 On the iPhone screen, touch the source tab, and then select the disc or USB option.
  - ↳ The folders in the disc or USB storage device are displayed.
- 5 Open a folder, and then select a file to play.
- 6 Tap control buttons on the iPhone screen to control the play.
  - To exit the application, press the home button on the iPhone.

## Care



### Caution

- Never use solvents such as benzene, thinner, cleaners available commercially, or anti-static sprays intended for discs.

### Clean discs

Wipe the disc with a micro fibre cleaning cloth from the centre to the edge in a straight line movement.

# 16 Specifications



## Note

- Specifications are subject to change without notice

## Video

- Video DAC: 12 Bits
- Signal system: PAL / NTSC
- Video format: 4:3 / 16:9
- Video S/N: > 60 dB
- HDMI output: 480p, 576p, 720p, 1080i, 1080p, 1080p/24Hz

## Audio line-out

- Output level: 1.9Vrms +/- 2 dB
- Total harmonic distortion: > 65 dB (1 kHz)
- Frequency response: 20 Hz - 20k Hz
- S/N ratio: > 65 dBA

## Audio amplifier

- Total output power: 2 x 80 W RMS
- Total harmonic distortion: > 65 dB (1 kHz)
- Frequency response: 20 Hz - 20 kHz
- S/N ratio: > 75 dBA

## Headphone out

- Output level: 500 mV (RL=32 ohms)
- Total harmonic distortion: > 65 dB (1 kHz)
- Frequency response: 20 Hz - 20 kHz
- S/N ratio: > 65 dBA

## S/PDIF digital audio output:

- Coaxial: IEC 60958-3

## Main unit

- Power supply rating: 220V~, 50 Hz
- Power consumption: 55 W
- Power consumption in eco-power standby mode: < 0.5 W
- Dimensions (w x h x d): 270 x 143 x 279 (mm)
- Net weight: 4.8 kg

## Speakers

- Speaker impedance: 6 Ohm
- Speaker driver: 5.25" woofer+3" tweeter
- Sensitivity: > 80 dB/m/W ± 4 dB/m/W
- Dimensions: (w x h x d): 180 x 320 x 282 (mm)
- Net weight: 4.65 kg

## Accessories supplied

- Remote control and batteries
- AC power cord
- Audio cable
- Composite video cable
- MP3 link cable
- 2 x Speaker cable (3m)
- FM wire antenna
- User manual

## Laser Specification

- Laser Type:
  - BD Laser Diode: InGaN/AlGaIn
  - DVD Laser Diode: InGaAlP
  - CD Laser Diode: AlGaAs
- Wave length:
  - BD: 405 + 7 nm/-7 nm
  - DVD: 655 + 10nm/-10nm
  - CD: 790 + 10nm/-20nm
- Output power:
  - BD: Max. ratings: 20mW
  - DVD: Max. ratings: 7mW
  - CD: Max. ratings: 7mW

## Tuner (FM)

- Tuning range: 87.5 - 108 MHz
- Tuning grid: 50 KHz
  - Mono, 26dB S/N ratio: < 22 dBf,
  - Stereo, 46dB S/N ratio: > 43 dBf
- Search selectivity: > 28dBf
- Total harmonic distortion: < 3%
- Signal to noise ratio: > 50dB

# 17 Troubleshooting





## Warning

- Risk of electric shock. Never remove the casing of the product.

To keep the warranty valid, never try to repair the product yourself.

If you have problems using this product, check the following points before you request service. If you still have a problem, register your product and get support at [www.philips.com/welcome](http://www.philips.com/welcome).

Problem	Solution
No reaction to the remote control.	Connect this product to the power outlet. Point the remote control at the infrared sensor located on the front panel of this product. Insert the batteries correctly. Insert new batteries in the remote control.
Timer does not work.	Set the clock correctly. Switch on the timer.
Clock/timer setting is erased.	Power has been interrupted or the power cord has been disconnected. Reset the timer.
No picture.	See TV user manual for correct video input selection. Make sure that you connect the video cable correctly.
No picture on HDMI connection.	If this product is connected to an unauthorized display device with an HDMI cable, the audio/video signal may not be output. Make sure that the HDMI cable is faulty. Replace with a new HDMI cable. On the remote control, press  and then press "731" (numeric buttons) to recover picture display.
No high-definition video signal on the TV.	Make sure that the disc contains high-definition video. Make sure that the TV supports high-definition video.
No sound or poor sound	Adjust the volume. Disconnect the headphones. Make sure that the speakers are connected correctly. Make sure that the stripped speaker wires are clamped.
No sound on HDMI connection.	You may not hear any sound from the HDMI output if the connected device is non-HDCP compliant or only DVI-compatible.
No secondary audio output for Picture-in-Picture feature.	When <b>[Bitstream]</b> under the <b>[HDMI Audio]</b> menu is selected, interactive sound, for example, the secondary sound for Picture-in-Picture feature, is muted. Deselect <b>[Bitstream]</b> .
Disc cannot be played.	Make sure that the disc is correctly loaded. Make sure that this product supports the disc (see " <b>Your Blu-ray Component Hi-Fi System</b> " > " <b>Playable media</b> "). Make sure that this product supports the region code of the DVD or BD. For a recordable or rewritable disc, make sure that the disc is finalized. Clean the disc.

Data files (JPEG, MP3, WMA) cannot be played or read.	<p>Make sure that the data file was recorded in the UDF, ISO9660 or JOLIET format.</p> <p>Make sure that the disc does not contain more than 9,999 files for DVD, and 999 files for CD.</p> <p>Make sure that the JPEG file extension is .jpg, .JPG, .jpeg or .JPEG.</p> <p>Make sure that the MP3/WMA file extension is .mp3 or .MP3, and .wma or .WMA for windows Media™ Audio.</p>
DivX video files cannot be played.	<p>Make sure that the DivX video file is complete and the file extension is correct.</p> <p>DRM-protected video files that are stored on a USB storage device cannot be played through an analog video connection (for example, composite, component, and scart). Transfer the video content onto a supported disc, or use an HDMI connection to play these files.</p>
Cannot control the play by the remote control when I play videos stored on the connected iPad.	<p>In simple mode, you can only control the play on the iPad screen. (see <b>“Browse iPod/iPhone/iPad” &gt; “Use the playback interface of iPod/iPhone/iPad” &gt; “Play video files”</b>)</p> <p>To control the play by your remote control, press <b>DOCK</b> again to switch to the extended mode. (see <b>“Browse iPod/iPhone/iPad” &gt; “Use the playback interface of this product”</b>)</p>
The contents of the USB storage device cannot be read.	<p>The USB storage device is not compatible with this product.</p> <p>The maximum size of memory supported is 160 GB.</p>
‘No entry’ or  is displayed on the TV.	<p>The operation is unavailable at the current state.</p>
EasyLink feature does not work.	<p>Make sure that this product is connected to the Philips brand EasyLink TV and the <b>[EasyLink]</b> in the menu is set to <b>[On]</b>.</p>
Unable to access BD-Live feature.	<p>Make sure that the network has been connected and set up correctly (see <b>“Use the network” &gt; “Connect and set up”</b>).</p> <p>Delete previous BD-Live data on the connected USB storage device to free space (see <b>“Setup” &gt; “Advanced setup” &gt; [Clear memory]</b>).</p> <p>Make sure that the BD disc supports BD-Live feature.</p>
Poor radio reception	<p>Increase the distance between the apparatus and your TV or VCR.</p> <p>Fully extend the FM antenna.</p> <p>Connect an outdoor FM antenna instead.</p>
Wireless network is not found or distorted.	<p>Microwave ovens, DECT phones or other wireless devices in your neighborhood might disturb the wireless network.</p> <p>Make sure that the firewalls in your network allow access to the wireless connection of this product.</p> <p>If the wireless network does not work properly in your home, try the wired network connection (see <b>“Use the network” &gt; “Connect and set up”</b>).</p>



# 18 Notice

---

## Disposal of your old product and batteries



Your product is designed and manufactured with high quality materials and components, which can be recycled and reused. Never dispose of your product with other household waste. Please inform yourself about the local rules on the separate collection of electrical and electronic products and batteries. The correct disposal of these products helps prevent potentially negative consequences on the environment and human health. Your product contains batteries, which cannot be disposed of with normal household waste. Please inform yourself about the local rules on separate collection of batteries. The correct disposal of batteries helps prevent potentially negative consequences on the environment and human health. Please visit [www.recycle.philips.com](http://www.recycle.philips.com) for additional information on a recycling center in your area.

---

## Copyright notice



This item incorporates copy protection technology that is protected by U.S. patents and other intellectual property rights of Rovi Corporation. Reverse engineering and disassembly are prohibited.

### Open source software

Philips Electronics Hong Kong Ltd. hereby offers to deliver, upon request, a copy of the complete corresponding source code for the copyrighted open source software packages used in this product for which such offer is requested by the respective licenses.

This offer is valid up to three years after product purchase to anyone in receipt of this information. To obtain source code, please contact [open.source@philips.com](mailto:open.source@philips.com). If you prefer not to use email or if you do not receive confirmation receipt within a week after mailing to this email address, please write to "Open Source Team, Philips Intellectual Property & Standards, P.O. Box 220, 5600 AE Eindhoven, The Netherlands." If you do not receive timely confirmation of your letter, please email to the email address above.

---

## Trademark notice



'Blu-ray', 'Blu-ray Disc', 'Blu-ray Disc' logo, 'Blu-ray 3D' and 'Blu-ray 3D' logo are the trademarks of Blu-ray Disc Association.



'BD LIVE' is a trademark of Blu-ray Disc Association.



ABOUT DIVX VIDEO: DivX® is a digital video format created by DivX, LLC, a subsidiary of Rovi Corporation. This is an official DivX Certified® device that plays DivX video. Visit [divx.com](http://divx.com) for more information and software tools to convert your files into DivX videos.

**ABOUT DIVX VIDEO-ON-DEMAND:** This DivX Certified® device must be registered in order to play purchased DivX Video-on-Demand (VOD) movies. To obtain your registration code, locate the DivX VOD section in your device setup menu. Go to [vod.divx.com](http://vod.divx.com) for more information on how to complete your registration.

DivX®, DivX Certified®, DivX Plus® HD and associated logos are trademarks of Rovi Corporation or its subsidiaries and are used under license.

DivX Certified® to play DivX® and DivX Plus® HD (H.264/MKV) video up to 1080p HD including premium content.



HDMI, and HDMI logo, and High-Definition Multimedia Interface are trademarks or registered trademarks of HDMI licensing LLC in the United States and other countries.



DLNA®, the DLNA Logo and DLNA CERTIFIED® are trademarks, service marks, or certification marks of the Digital Living Network Alliance.



The Wi-Fi CERTIFIED Logo is a certification mark of the Wi-Fi Alliance.



Manufactured under license under U.S. Patent Nos: 5,956,674; 5,974,380; 6,226,616; 6,487,535; 7,392,195; 7,272,567; 7,333,929; 7,212,872 & other U.S. and worldwide patents issued & pending. DTS-HD, the Symbol, & DTS-HD and the Symbol together are registered trademarks & DTS-HD Master Audio | Essential is a trademark of DTS, Inc. Product includes software. © DTS, Inc. All Rights Reserved.



Manufactured under license from Dolby Laboratories. Dolby and the double-D symbol are trademarks of Dolby Laboratories.



Java and all other Java trademarks and logos are trademarks or registered trademarks of Sun Microsystems, Inc. in the United States and/or other countries.



“Made for iPod,” “Made for iPhone,” and “Made for iPad” mean that an electronic accessory has been designed to connect specifically to iPod, iPhone, or iPad, respectively, and has been certified by the developer to meet Apple performance standards. Apple is not responsible for the operation of this device or its compliance with safety and regulatory standards. Please note that the use of this accessory with iPod, iPhone, or iPad may affect wireless performance. iPod and iPhone are trademarks of Apple Inc., registered in the U.S. and other countries. iPad is a trademark of Apple Inc.

**This apparatus includes this label:**



# 19 Glossary

---

## A

### Aspect ratio

Aspect ratio refers to the width to height ratio of TV screens. The ratio of a standard TV is 4:3, while the ratio of a high-definition or wide TV is 16:9. The letter box allows you to enjoy a picture with a wider perspective on a standard 4:3 screen.

### AVCHD

AVCHD is a format (standard) for high definition video cameras that can be used to record and play high-resolution HD images.

---

## B

### Blu-ray Disc (BD)

Blu-ray Disc is a next generation optical video disc capable of storing five times more data than a conventional DVD. The large capacity makes it possible to benefit from the features such as high-definition videos, multichannel surround sound, interactive menus and so on.

### BONUSVIEW

BonusView, also known as "Profile 1.1". In addition to basic playback and interactive features, BonusView players introduced after 31st October, 2007 enables users to enjoy 'Picture-in-Picture' (PiP) and secondary audio features (useful when playing games that use additional audio stream while the movie is playing) on compatible BonusView discs.

---

## D

### Digital Audio

Digital Audio is a sound signal that has been converted into numerical values. Digital sound can be transmitted through multiple channels. Analogue sound can only be transmitted through two channels.

### DivX Video-On-Demand

This DivX Certified<sup>®</sup> device must be registered in order to play DivX Video-on-Demand (VOD) content. To generate the registration code, locate the DivX VOD section in your device setup menu. Go to [vod.divx.com](http://vod.divx.com) with this code to complete the registration process and learn more about DivX video.

### Dolby Digital

A surround sound system developed by Dolby Laboratories that contains up to six channels of digital audio (front left and right, surround left and right, center and subwoofer.)

### DTS

Digital Theatre Systems. A surround sound system for providing 5.1 channels of discrete digital audio in consumer electronics products and software content. It is not developed by Dolby Digital.

---

## H

### HDCP

High-bandwidth Digital Content Protection. This is a specification that provides a secure transmission of digital contents between different devices (to prevent unauthorized copyright.)

### HDMI

High-Definition Multimedia Interface (HDMI) is a high-speed digital interface that can transmit uncompressed high definition video and digital multichannel audio. It delivers high quality picture and sound quality, completely free from noise. HDMI is fully backward-compatible with DVI.

As required by the HDMI standard, connecting to HDMI or DVI products without HDCP (High-bandwidth Digital Content Protection) will result in no Video or Audio output.

---

## J

### JPEG

A very common digital still picture format. A still-picture data compression system proposed by the Joint Photographic Expert Group, which features small decrease in image quality in spite of its high compression ratio. Files are recognized by their file extension '.jpg' or '.jpeg.'

---

## L

### LAN (Local Area Network)

A group of linked devices in a company, school or home. Indicates the boundaries of a particular network.

---

## M

### MP3

A file format with a sound data compression system. MP3 is the abbreviation of Motion Picture Experts Group 1 (or MPEG-1) Audio Layer 3. With the MP3 format, one CD-R or CD-RW can contain about 10 times more data than a regular CD.

---

## P

### PBC

Playback Control. A system where you navigate through a Video CD/SuperVCD with on-screen menus that are recorded onto the disc. You can enjoy interactive playback and search.

---

## R

### Region code

A system that allows discs to be played only in the region designated. This unit only plays discs that have compatible region codes. You can find the region code of your unit on the product label. Some discs are compatible with more than one region (or ALL regions.)

---

---

## W

### WMA

Windows Media™ Audio. Refers to an audio compression technology developed by Microsoft Corporation. WMA data can be encoded with Windows Media player version 9 or Windows Media player for Windows XP. Files are recognized by their file extension '.wma.'

部件名称 Name of the Parts	有毒有害物质或元素 Hazardous/Toxic Substance					
	铅 (Pb, Lead)	汞 (Hg, Mercury)	镉 (Cd, Cadmium)	六价铬 (Chromium 6+)	多溴联苯 (PBB)	多溴二苯醚 (PBDE)
Housing 外壳	O	O	O	O	O	O
DVD loader DVD 光盒	X	O	O	O	O	O
PWBs 电路板组件	X	O	O	O	O	O
Accessories (Remote control & cables) 附件 (遥控器, 电源线, 连接线)	X	O	O	O	O	O
Batteries in Remote Control (ZnC) 遥控器电池	X	O	O	O	O	O

O: 表示该有毒有害物质在该部件所有均质材料中的含量均在SJ/T11363 - 2006 标准规定的限量要求以下。  
O: Indicates that this toxic or hazardous substance contained in all of the homogeneous materials for this part is below the limit requirement in SJ/T11363 - 2006.

X: 表示该有毒有害物质至少在该部件的某一均质材料中的含量超出SJ/T11363 - 2006 标准规定的限量要求。  
X: Indicates that this toxic or hazardous substance contained in at least one of the homogeneous materials used for this part is above the limit requirement in SJ/T11363 - 2006.



### 环保使用期限 **Environmental Protection Use Period**

此标识指期限（十年），电子信息产品中含有的有毒有害物质或元素在正常使用的条件下不会发生外泄或突变，用户使用该电子信息产品不会对环境造成严重污染或对其人身、财产造成严重损害的期限。

This logo refers to the period ( 10 years ) during which the toxic or hazardous substances or elements contained in electronic information products will not leak or mutate so that the use of these [substances or elements] will not result in any severe environmental pollution, any bodily injury or damage to any assets.

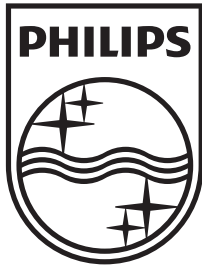
### 电池标识 **Battery labeling logo**



### 环保使用期限 **Environmental Protection Use Period**

此标识指期限（五年），电池中含有的有毒有害物质或元素在正常使用的条件下不会发生外泄或突变，用户使用该电池产品不会对环境造成严重污染或对其人身、财产造成严重损害的期限。

This logo refers to the period ( 5 years ) during which the toxic or hazardous substances or elements contained in the **battery** will not leak or mutate so that the use of these [substances or elements] will not result in any severe environmental pollution, any bodily injury or damage to any assets.



© 2011 Koninklijke Philips Electronics N.V.

All rights reserved.

DBD8010\_93\_UM\_V2.0

