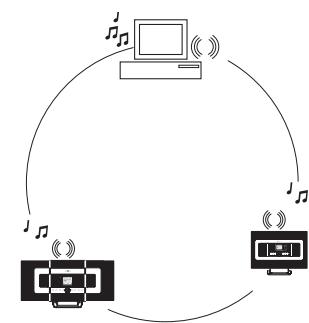


Connect to your PC

Connect Philips Wireless Music Center to your PC to perform the following:

- **Access** music files stored on your PC from the **UPnP** source of Philips Music Center/Station.



- **Manage** the music content stored on Philips Music Center from your PC

- **Update** Gracenote® music recognition service database on the Center for the latest disc information

- **Upgrade** firmware of Philips Music Center/Station



The minimum PC requirements to connect to Philips Music Center:

- Windows 2000 SP4 or above / XP (Home or Professional)
- Pentium III 500MHz processor or higher
- 256MB RAM
- CD-ROM Drive
- Ethernet Adapter (for wired connection)/ Wireless Network Adaptor 802.11 b/g (for wireless connection)
- 500MB free hard disk space
- Windows Media Player® 9.0 or later versions installed

Index

Set up connection between the Center and your PC

For more information, see **A**

Transfer your PC content to the Center using WADM (Wireless Audio Device Manager)

For more information, see **B1** to **B4**

Connect the Center to your home network (For advanced users)

For more information, see **C1** to **C2**

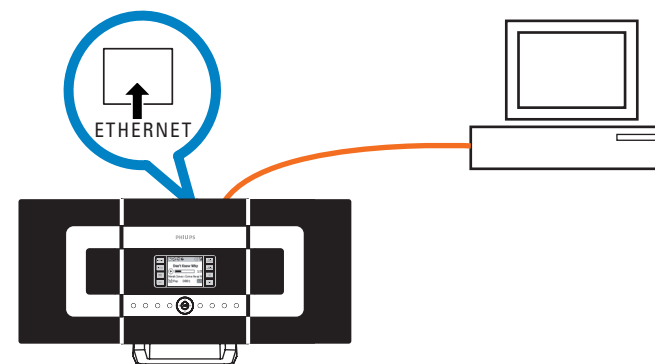
Stream PC content to the Center and Station by UPnP (Universal Plug and Play) (For advanced users)

For more information, see **D**

A

Set up a wired connection

Connect Center to your PC directly with the supplied (orange) Ethernet cable




Go to section **B1** after connection is established

Tips:

- Make sure that the Ethernet port on your PC is enabled to establish WADM connection.

B1

Install and launch WADM


- 1 Insert the PC Suite CD into your PC
- 2 Select desired language and accept license terms
- 3 Select 'WADM' and click 'Next' to start installation
- 4 To launch WADM, double click WADM icon  on the PC desktop.
 - A list of discovered Center/Station appears
- 5 Select the desired Center/Station, and then click **Connect now**

If the desired Center/Station is not discovered, select **Connection Wizard > Express mode > Next** to establish new connection

Note: If you have more than one network adapter in your PC, please select the Ethernet adapter that you have connected your Orange cable to.



Tips:

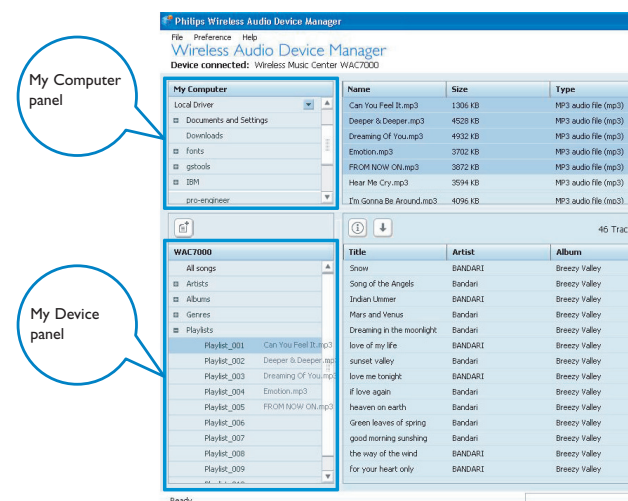
- Log onto your PC with administrator's rights enabled.
- If the IP configuration of the Center/Station is not in the default range (Subnet mask: 255.255.0.0; IP address: 172.31.x.x), select **Connection Wizard > Custom Mode**. Enter the current IP configuration of the Center/Station as prompted. Press the MENU button and select **Information > Ethernet** to check IP configuration.
- For Windows XP SP2 users, the Windows Firewall must be turned off temporarily by selecting **Start > Control Panel > Security Center > Windows Firewall > Off** in order to use the WADM (Visit www.microsoft.com for more details).
- If some of the WADM functions cannot be used, they might be blocked by your anti-virus software. It is recommended that you turn off your anti-virus software temporarily.
- When WADM is running, Internet access of your PC may be disabled. Close WADM to restore access.
- If the operating system of your PC is Windows Vista, right click on WADM icon , select **Properties > Compatibility**, and make sure the check-box under "Compatibility mode" and "Privilege level" is marked, then click OK. Otherwise you may not be able to launch WADM.

B2

Using WADM

Transfer music files from your PC to the Center

- 1 Click **Content management**
 - A new window will be shown.
- 2 On **My Computer** panel, click to highlight a desired file/folder
- 3 Drag selection to **My Device** panel
- 4 While transferring, you can add more file/folder(s) to the transfer queue



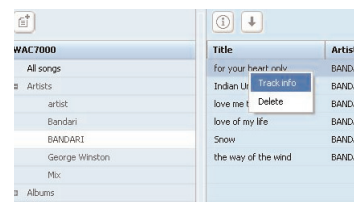
Tip:

- It is recommended to transfer less than 4G or 1000 songs at each attempt.

B₃ Using WADM

To edit track information

- 1 On the device window, click to highlight the desired track
- 2 Right click on your mouse. Click **Track info**

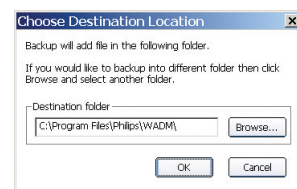


Tips:

- To select more than one file, press and hold <Ctrl> on your PC keyboard, and click the desired files.
- To playback tracks, double click on the track to start playing.
- Click "Title" or "Artist" to sort the music files by track name or by Artist
- In case the edited ID3 tags are not shown on WADM, go to **File > Refresh Content** to refresh the WADM. Otherwise, restart WADM.
- **Always press and hold STANDBY-ON to switch the Center to ECO POWER (power-saving mode) before removing its power plug.**

Backup the music library of the Center to your PC

- 1 Click **Backup content**
- 2 Follow the screen instructions to backup the music library of the Center to your PC. Backup files are named with current date



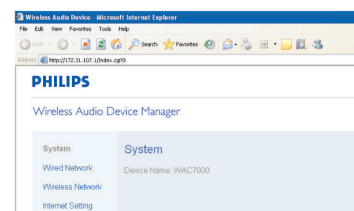
Tips:

- Make sure that you have adequate space to store the backup files.
- Do not delete the backup file using Windows Explorer. If the backup file is accidentally deleted, please search for the file named **YOURMAC.inx** using Windows Explorer search tool and then delete it. You can only perform backup after that.

B₄ Using WADM

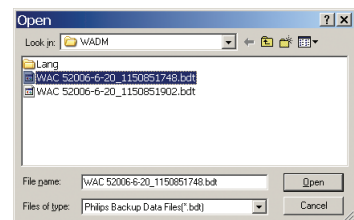
About Device Configuration

In the sub-menu of Device configuration, you can view System information, manage the Network settings, upgrade Firmware, update CD Database and view connection of the device with the external network.



Restore backup files on your PC to the Center

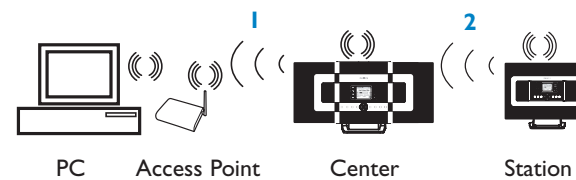
- 1 Click **Restore content**
- 2 Click to highlight the file to be restored, and then click **Open**



Tip:

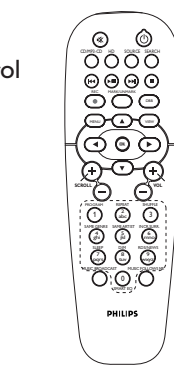
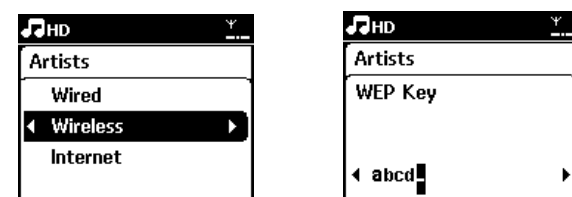
- After changing network settings with WADM, press and hold STANDBY-ON to switch the Center to ECO Power (power-saving mode) to refresh IP update.

C₁ Connecting to home wireless network



1 To connect the Center to the wireless network:

- Press the **MENU** button
- Select **Settings > Network > Wireless >** (Select desired network - SSID) > (Use the 1-way remote control to input the encryption key) > Press **OK** > Select **Automatic > Apply Settings > Yes**



1-way remote control

At this point, connection between the Station(s) and the Center will be lost. The connection will only be recovered after the Station(s) are connected to the network

2 To connect the Station(s) to the network

- Option 1:** Direct connection of the Station(s) to the wireless network
- On the Station, repeat the same steps above

Option 2: Connection of the Station(s) to network via the Center

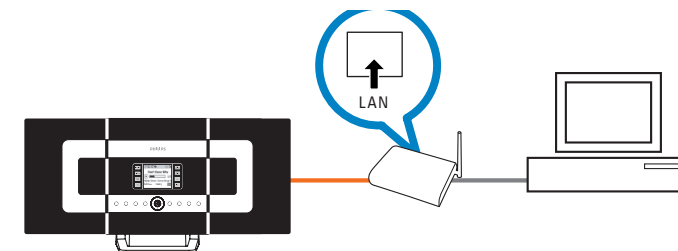
- On the Center, select **HD** source, then press the **MENU** button, then select **Station Mgmt > Add New Station**. Press **STOP** when all the Stations are discovered
- On the Station, press the **MENU** button, then select **Installation Mode**

Tips:

- You can only input the WEP or WPA keys by using the 1-way remote control. Do not use 2-way remote control.
- Check that the wireless network adaptor of your PC is enabled.
- Position the Center closer to your wireless Access Point.
- Make sure that DHCP is enabled on your wireless Access Point. If it is not available, choose Static and key in IP configuration
- For multi-station users, please delete all Stations from the Center before adding them again in option 2.
- If you want to return to the original Ad-Hoc mode of the Center/Station connection from the Infrastructure mode, please reset the Center to its default settings (see section 14 of the User Manual)
- In case you experience trouble setting up your WACS7000 with your home wireless network after you are done with the steps described above, please refer to section 15 on Troubleshooting of the User Manual.

C₂ Connecting to home wired network


Connect the Center directly to the Access Point with the supplied (orange) Ethernet cable

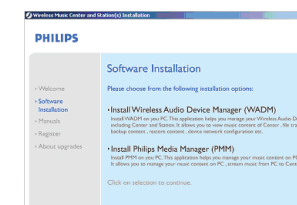


Tips:

- For some wired routers, a "Cross Link" Ethernet cable should be used instead of the normal "Straight" Orange cable provided in the box.
- If your home network is connected to Internet, you should be able to use Gracenote online queries after successfully connecting WACS7000 to your home wireless network. For details, please refer to section 12 of the User Manual.

D Using UPnP

- 1 Insert the PC suite CD into your PC.
- 2 Click "Install Philips Media Manager" to start the installation of PMM.
- 3 Follow the on-screen instructions for the installation.
- 4 To launch PMM, double click the icon  on the PC desktop.
- 5 The first time you launch **PMM**, click **Add Music > Add Files or Folders** to specify music folders on your PC
- 6 On WACS7000, press **SOURCE** to enter UPnP mode. If you have successfully connected WACS7000 to the home network where your PC is also connected to, you should be able to see the Music Server on the screen of WACS7000



Tips:

- UPnP device may not necessarily be a PC but any content serving device.
- If UPnP device is not detected after 5 minutes, switching the UPnP device off and on again might re-establish a faster connection.



Need help?

Online

Go to www.philips.com/support

Gracenote is a registered trademark of Gracenote. The Gracenote logo and logotype, and the "Powered by Gracenote" logo are trademarks of Gracenote.



Be responsible
Respect copyrights

© Royal Philips Electronics N.V. 2007
All rights reserved.

3141 075 21823
www.philips.com

Eng