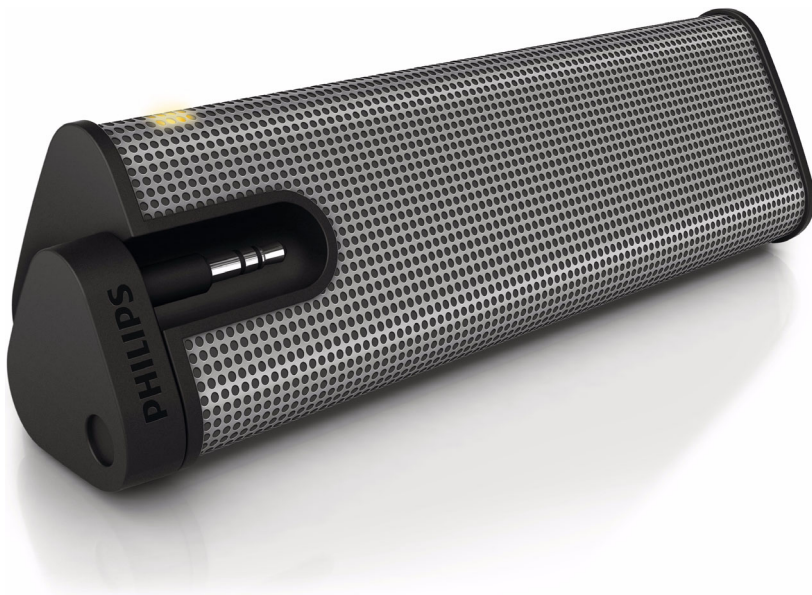


Philips
Portable speaker



SBA1610



Mobile speaker

Filling your world with rich, dynamic sound, Philips SBA1610 speakers come with a handy mobile stand that makes them incredibly easy to use.

Impressive sound

- Class "D" Digital Amplifier for superb sound quality
- Neodymium speaker drivers deliver pure balanced sound
- 2W RMS total output power

Simplicity

- Battery powered for portability
- Compatible with any media

PHILIPS

Specifications

Product dimensions

- Product dimensions (W x H x D): 16,3 x 4,9 x 7 cm
- Product dimensions (W x H x D): 6,4 x 1,9 x 2,8 inch
- Weight: 0,15 kg
- Weight: 0,331 lb

Compatible with

- Smartphones
- iPod
- iPhone
- Mp3 player

Design and finishing

- Color(s): Grey

Sound

- Frequency response: 350 - 16,000 Hz
- Impedance: 4
- RMS Power rating: 2 W

Power

- Battery type: AAA
- Operating time on battery: 12 hr
- Number of batteries: 3

Outer Carton

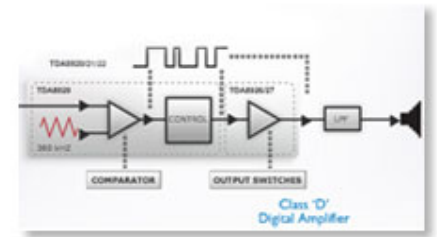
- Gross weight: 1,35 kg
- Gross weight: 2,976 lb
- GTIN: 1 06 09585 22535 7
- Outer carton (L x W x H): 7,9 x 4,9 x 6,9 inch
- Outer carton (L x W x H): 20 x 12,4 x 17,5 cm
- Nett weight: 1,411 lb
- Nett weight: 0,64 kg
- Number of consumer packagings: 4
- Tare weight: 1,565 lb
- Tare weight: 0,71 kg

Packaging dimensions

- Type of shelf placement: Dummy
- Packaging dimensions (W x H x D): 7,5 x 2,2 x 3,1 inch
- Packaging dimensions (W x H x D): 19 x 5,6 x 8 cm
- Gross weight: 0,3 kg
- Gross weight: 0,661 lb
- Nett weight: 0,353 lb
- Nett weight: 0,16 kg
- Number of products included: 1
- Packaging type: Dummy
- Tare weight: 0,14 kg
- Tare weight: 0,308 lb
- UPC: 6 09585 22535 0

Highlights

Class D Digital Amplifier



Class 'D' Digital Amplifier takes an analog signal, converts it into a digital signal and then amplifies the signal digitally. The signal then enters a demodulation filter to give the final output. The amplified digital output delivers all the advantages of digital audio, including improved sound quality. In addition, Class 'D' Digital Amplifier has greater than 90% efficiency compared to traditional AB amplifiers. This high efficiency translates into a powerful amplifier with a small footprint.

