



Philips  
Cordless phone with  
answering machine

25 min answering machine  
1.6" display/ blue backlight

D1251B



## Simply Call

with answering machine

A compact phone with all essential functions at your finger tips. Ergonomically designed to give excellent sound reproduction, this plug & play device, with an inbuilt answering machine, makes calling your loved ones truly enjoyable.

### Nice and simple

- Up to 25 minutes message on your answering machine
- Ultimate convenience through easy setup
- Textured back cover for non-slip grip
- Menu in multiple local languages
- Easy to read 4.1 cm (1.6") display with backlight
- Up to 10 hours talk time on a single charge
- Caller ID – so you always know who is calling\*

### Crystal clear sound

- Parametric Equalizer delivers pure and clear sound
- Automatic Volume Control offsets unwanted volume variation
- Optimized antenna layout for great reception in any room
- Advanced sound testing & tuning for superb voice quality

### Eco-conscious product

- Low radiation and power consumption

# PHILIPS

Cordless phone with answering machine  
25 min answering machine 1.6" display/ blue backlight

D1251B/51

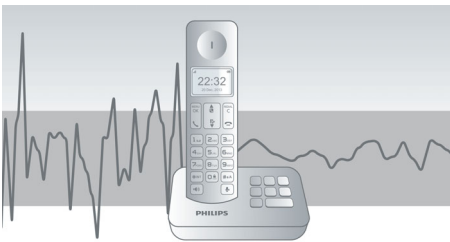
## Highlights

### Advanced sound testing



We test the sound quality of our DECT phones the same way as high-end headphone manufacturers do. Using an advanced ear simulator, we can accurately re-create the way people actually hear. This helps our acoustic engineers to measure and fine-tune things like frequency response, distortion and overall hearing perception, to create perfect voice reproduction for both handset and handsfree modes.

### Automatic Volume Control



Automatic Volume Control offsets variations in sound signal, which can be caused by distance, signal strength or the caller's phone - so what you hear always remains consistent. Reducing the audio amplification for strong signals, and increasing it for weak ones, it means you can enjoy a smooth conversation without unwanted sound volume variation.

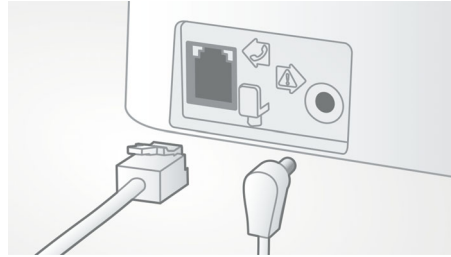
### Caller ID\*



Sometimes it is good to know who is calling before you answer. And our Caller ID lets you

keep track of who is on the other end of the line.

### Easy setup



Ultimate convenience through easy set up. Simplified installation - Plug & Play product

### Eco-conscious product



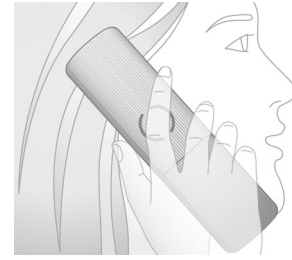
Philips phones are energy efficient and designed to be respectful to the environment.

### Menu in local languages



Enjoy easy set-up, navigation and control with intuitive menu available in local languages.

### Non-slip grip



The rear of the handset is treated with a special texture for added comfort and better grip.

### Optimized antenna layout



Our optimized antenna layout ensures strong and stable reception – even in areas of the house where cordless transmission is difficult. Now you can take a call wherever you are in the house, and enjoy a long, uninterrupted conversation even as you walk around.

### Parametric Equalizer



Our telephones use parametric equalization in the digital sound processing to fine-tune the sound response back to the intended linear frequency response curve, delivering sound that is pure and clear, for each conversation.

### Up to 10 hours talk time

Up to 10 hours talk time on a single charge

# Specifications

## Convenience

- Menu structure in the handset: List Menu
- Signal strength indicator: 3-bar indicator
- Battery level indicator: 3-bar battery icon
- Intercom - multiple handsets
- Date / Time display
- Battery charge indication
- Signal strength indication
- Programmable hot keys: None
- Call Management: Call Waiting\*, Caller ID\*, Microphone mute, Missed Calls, Received Calls
- Keypad lock
- Key tone on/off
- Auto hang up
- Multi base capability: 1
- Multi handset capability: Up to 4
- Base Station keys: Paging key
- Up to 10 hrs talk time
- Up to 180 hrs standby time
- Charge time: 8 hours
- Line cord length: 1.5m
- Power cord length: 1.5m
- Range: Open field <300m; in door <50m
- Non-slip grip: Circular texture

## Sound

- Volume control on handset
- Ringtones on handset: 10 standard

## Picture/Display

- Display size: 4.1cm / 1.6"
- Display type: 12 digits (Alphanumeric) +hard icons
- Backlight: Yes
- Backlight color: Blue

## Answering Machine

- Recording time capacity: up to 25 minutes
- Pre-recorded OGM
- Answering Machine control:: from handset

## Memory Capacity

- Phonebook: 50 names and numbers
- Redial List Capacity: 10 last numbers
- Call log entries: 20 entries

## Power

- Battery capacity: 300 mAh
- Battery type: AAA NiMH Rechargeable
- Mains power: AC 100-240V ~50/60Hz
- Power Consumption: <0.75 W

## Security

- Transmission encryption : Yes

## Network Features

- Compatible: GAP

## SAR Value

- Philips handsets: <0.1 W/kg

## Packaging dimensions

- Packaging type: Carton
- Number of products included: 1
- Type of shelf placement: Laying
- Packaging dimensions (W x H x D):  
18.4 x 13.5 x 5.9 cm
- Gross weight: 0.379 kg
- Nett weight: 0.297 kg
- Tare weight: 0.082 kg
- EAN: 87 12581 72236 4



Issue date 2015-12-01

Version: 6.0.3

12 NC: 8670 001 15304  
EAN: 87 12581 72236 4

© 2015 Koninklijke Philips N.V.  
All Rights reserved.

Specifications are subject to change without notice.  
Trademarks are the property of Koninklijke Philips N.V.  
or their respective owners.

[www.philips.com](http://www.philips.com)

\*\*This feature requires additional subscription of Caller ID service.  
Please check with your local network operator for details.