

Always there to help you

Register your product and get support at
www.philips.com/welcome



MCM2005



User Manual

PHILIPS

Contents

1 Important 3

- Safety 3
- Notice 4

2 Your Micro Music System 5

- Introduction 5
- What's in the box 5
- Overview of the main unit 6
- Overview of the remote control 7

3 Get started 8

- Connect speakers 8
- Connect FM aerial 9
- Connect power 9
- Prepare the remote control 9
- Turn on 10
- Set clock 10
- Demonstrate the unit's features 10
- Store radio stations automatically 10

4 Play 11

- Play from disc 11
- Play from USB 11
- Basic play operations 11

5 Listen to FM radio 12

- Tune to FM radio stations 12
- Program radio stations automatically 12
- Program radio stations manually 12
- Tune to a preset radio station 12
- Show RDS information 12

6 Other features 13

- Set alarm timer 13
- Set sleep timer 14
- Listen to external audio device 14
- Listen through headphone 14

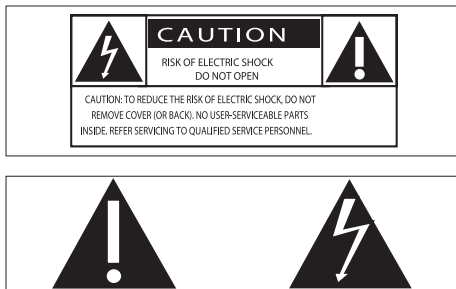
7 Product information 14

- Specifications 14
- USB playability information 15
- Supported MP3 disc formats 15

8 Troubleshooting 16

1 Important

Safety



This 'bolt of lightning' indicates uninsulated material within your unit may cause an electrical shock. For the safety of everyone in your household, please do not remove product covering.

The 'exclamation point' calls attention to features for which you should read the enclosed literature closely to prevent operating and maintenance problems.

WARNING: To reduce the risk of fire or electric shock, this apparatus should not be exposed to rain or moisture and objects filled with liquids, such as vases, should not be placed on this apparatus.

CAUTION: To prevent electric shock, match wide blade of plug to wide slot, fully insert.

Warning

- Never remove the casing of this apparatus.
- Never lubricate any part of this apparatus.
- Never place this apparatus on other electrical equipment.
- Keep this apparatus away from direct sunlight, naked flames or heat.
- Ensure that you always have easy access to the power cord, plug or adaptor to disconnect the apparatus from the power.
- Use only power supplies listed in the user manual.

- The device shall not be exposed to dripping or splashing.
- Do not place any source of danger on the device (e.g. liquid filled objects, lit candles).
- Where the MAINS plug or an appliance coupler is used as the disconnect device, the disconnect device shall remain readily operable.

Caution

- Use of controls or adjustments or performance of procedures other than herein may result in hazardous radiation exposure or other unsafe operation..

Hearing safety



Caution

- To prevent possible hearing damage, do not listen at high volume levels for long periods.

Listen at a moderate volume.

- Using headphones at a high volume can impair your hearing. This product can produce sounds in decibel ranges that may cause hearing loss for a normal person, even for exposure less than a minute. The higher decibel ranges are offered for those that may have already experienced some hearing loss.
- Sound can be deceiving. Over time your hearing 'comfort level' adapts to higher volumes of sound. So after prolonged listening, what sounds 'normal' can actually be loud and harmful to your hearing. To guard against this, set your volume to a safe level before your hearing adapts and leave it there.

To establish a safe volume level:

- Set your volume control at a low setting.
- Slowly increase the sound until you can hear it comfortably and clearly, without distortion.

Listen for reasonable periods of time:

- Prolonged exposure to sound, even at normally 'safe' levels, can also cause hearing loss.
- Be sure to use your equipment reasonably and take appropriate breaks.

Be sure to observe the following guidelines when using your headphones.

- Listen at reasonable volumes for reasonable periods of time.
- Be careful not to adjust the volume as your hearing adapts.
- Do not turn up the volume so high that you can't hear what's around you.
- You should use caution or temporarily discontinue use in potentially hazardous situations.



When this crossed-out wheeled bin symbol is attached to a product it means that the product is covered by the European Directive 2002/96/EC.

Please inform yourself about the local separate collection system for electrical and electronic products.

Please act according to your local rules and do not dispose of your old products with your normal household waste. Correct disposal of your old product helps to prevent potential negative consequences for the environment and human health.



Your product contains batteries covered by the European Directive 2006/66/EC, which cannot be disposed with normal household waste. Please inform yourself about the local rules on separate collection of batteries because correct disposal helps to prevent negative consequences for the environmental and human health.

Environmental information

All unnecessary packaging has been omitted. We have tried to make the packaging easy to separate into three materials: cardboard (box), polystyrene foam (buffer) and polyethylene (bags, protective foam sheet.)

Your system consists of materials which can be recycled and reused if disassembled by a specialized company. Please observe the local regulations regarding the disposal of packaging materials, exhausted batteries and old equipment.



The making of unauthorized copies of copy-protected material, including computer

Notice

Any changes or modifications made to this device that are not expressly approved by WOOX Innovations may void the user's authority to operate the equipment.



This product complies with the radio interference requirements of the European Community.



Your product is designed and manufactured with high quality materials and components, which can be recycled and reused.

programs, files, broadcasts and sound recordings, may be an infringement of copyrights and constitute a criminal offence. This equipment should not be used for such purposes.

This apparatus includes this label:



Note

- The type plate is located on the bottom of the main unit.

2 Your Micro Music System

Congratulations on your purchase, and welcome to Philips! To fully benefit from the support that Philips offers, register your product at www.philips.com/welcome.

Introduction

With this unit, you can:

- enjoy audio from discs, USB devices, and other external devices
- listen to radio stations

You can enrich sound output with these sound effects:

- Digital Sound Control (DSC)
- Dynamic Bass Boost (DBB)

The unit supports these media formats:

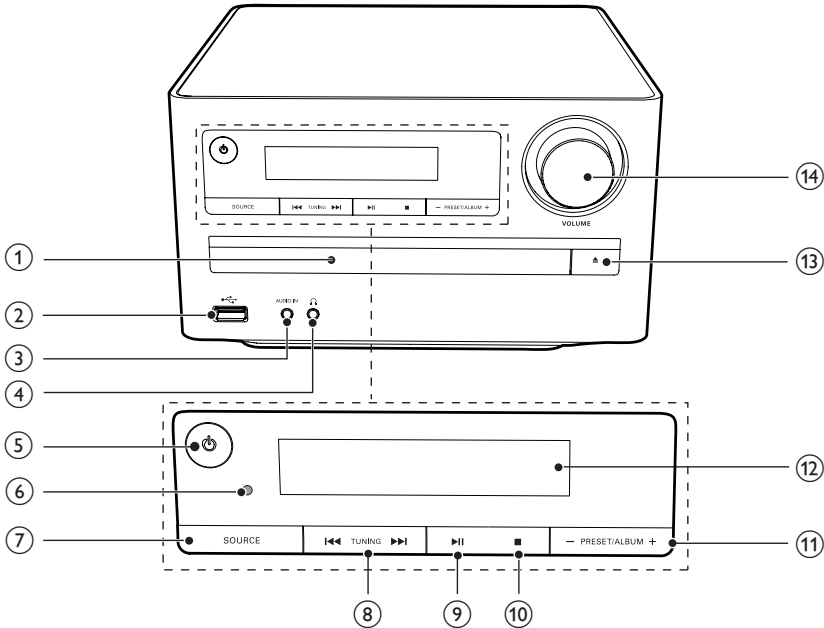


What's in the box

Check and identify the contents of your package:

- Main unit
- Remote control
- Speaker box (×2)
- FM antenna
- Short user manual

Overview of the main unit



① Disc compartment

- Hold a disc.

②

- USB socket.

③ AUDIO IN

- Connect an external audio device.

④

- Headphone socket.

⑤

- Turn on or off the unit.
- Switch to standby mode or Eco Power standby mode.

⑥ IR sensor

- Detect signals from the remote control.

⑦ SOURCE

- Select a source.

⑧

- In DISC and USB modes, skip to previous/next track.
- In DISC and USB modes, search within a track.
- Tune to a radio station.

⑨

- Start or pause play.

⑩

- Stop play.
- Erase a program.

⑪ -PRESET/ALBUM+

- In DISC and USB modes, skip to previous/next album.
- Select a preset radio station.

⑫ Display panel

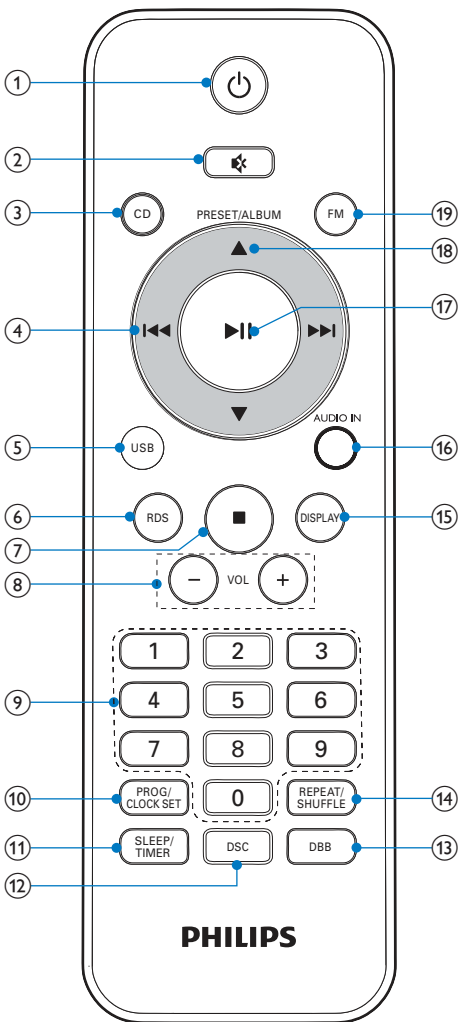
- Show current status.

⑬

- Open or close the disc compartment.

- ⑭ **VOLUME**
- Adjust volume.
 - Adjust time.

Overview of the remote control



- ① **Power**
- Turn on or off the unit.
 - Switch to standby or Eco Power standby mode.
- ② **Mute**
- Mute or restore volume.
- ③ **CD**
- Select DISC source.
- ④ **Navigation**
- In DISC and USB modes, skip to previous/next track.
 - In DISC and USB modes, search within a track.
 - Tune to a radio station.
- ⑤ **USB**
- Select USB source.
- ⑥ **RDS**
- For selected FM radio stations: display RDS information.
 - Synchronize clock with an RDS station.
- ⑦ **Stop**
- Stop play.
 - Erase a program.
- ⑧ **VOL +/-**
- Adjust volume.
- ⑨ **Numeric keypad**
- In DISC mode, select a track directly.
- ⑩ **PROG/CLOCK SET**
- Program tracks.
 - Program radio stations.
 - Set clock.
- ⑪ **SLEEP/TIMER**
- Set sleep timer.
 - Set alarm timer.
- ⑫ **DSC**
- Select a preset sound setting.
- ⑬ **DBB**
- Turn on or off dynamic bass enhancement.

- ⑭ **REPEAT/SHUFFLE**
 - Play tracks randomly.
 - Select a repeat play mode.
- ⑮ **DISPLAY**
 - Display play information.
 - Show time during USB and disc playback.
- ⑯ **AUDIO IN**
 - Select AUDIO IN source.
- ⑰ **▶||**
 - Start or pause play.
 - Select FM stereo or FM mono.
- ⑱ **PRESET/ALBUM / ▲ / ▼**
 - In DISC and USB modes, skip to previous/next album.
 - Select a preset radio station.
- ⑲ **FM**
 - Select TUNER (FM radio) source.

3 Get started



Caution

- Use of controls or adjustments or performance of procedures other than herein may result in hazardous radiation exposure or other unsafe operation.

Always follow the instructions in this chapter in sequence.

If you contact Philips, you will be asked for the model and serial number of this apparatus. The model number and serial number are on the bottom of the main unit. Write the numbers here:

Model No. _____

Serial No. _____

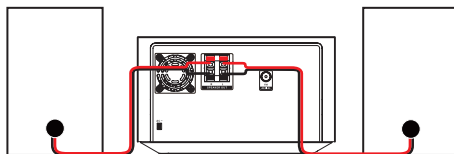
Connect speakers



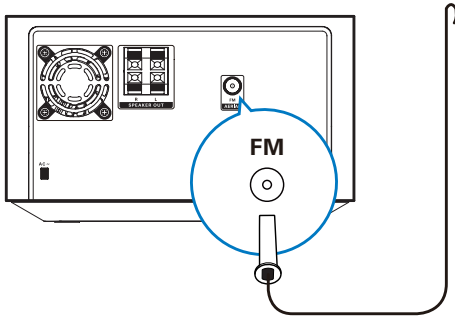
Note

- For optimal sound, use the supplied speakers only.
- Connect only speakers with impedance that is the same or higher than the supplied speakers. Refer to the Specifications section of this manual.

- 1 Insert the speaker wires completely into the speaker input sockets on the back of the unit.



Connect FM aerial



Tip

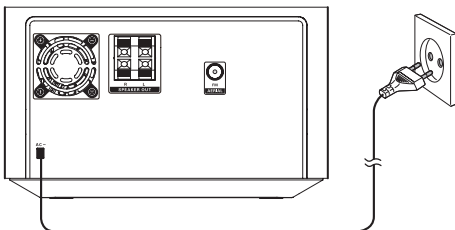
- For optimal reception, fully extend and adjust the position of the antenna.
- For better FM stereo reception, connect an outdoor FM antenna to the **FM AERIAL** socket.
- The unit does not support MW radio reception.

Connect the supplied FM antenna to the FM socket on the back of the main unit.

Connect power

Caution

- Risk of product damage! Ensure that the power supply voltage corresponds to the voltage printed on the back or the underside of the unit.
- Risk of electric shock! When you unplug the AC power cord, always pull the plug from the socket. Never pull the cord.
- Before you connect the AC power cord, ensure that you have completed all other connections.



Connect the power cable to the wall socket.

Prepare the remote control

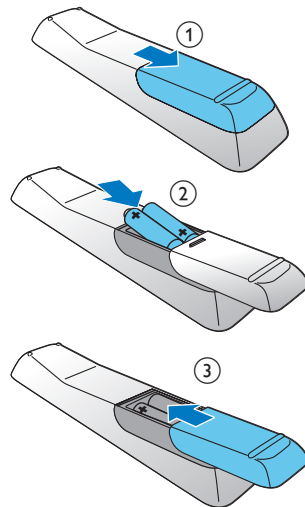


Caution

- Risk of explosion! Keep batteries away from heat, sunshine, or fire. Never discard batteries in fire.

To insert the remote control battery:

- 1 Open the battery compartment.
- 2 Insert 2 AAA batteries with correct polarity (+/-) as indicated.
- 3 Close the battery compartment.



Note

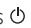
- If you are not going to use the remote control for a long time, remove the batteries.
- Do not use old and new or different types of batteries in combination.
- Batteries contain chemical substances, so they should be disposed of properly.
- During operation, always point the remote control at the IR sensor.

Turn on

Press .


- ↳ The unit switches to the last selected source.

Switch to standby mode

Press  for over 3 seconds to switch the unit to Eco Power Standby mode.

- ↳ The backlight on the display panel turns off.

To switch the unit to standby mode:

In Eco Power Standby mode, press  for over 3 seconds to switch to Standby mode.


- ↳ The clock (if set) appears on the display panels.

Set clock


- 1 In standby mode, press **PROG/CLOCK SET** for 3 seconds to activate clock setting mode.
 - ↳ **[CLOCK SET]** scrolls on the display, then the time format **[24H]** or **[12H]** appears.
- 2 Press **▲ / ▼** to select 24H or 12H.
- 3 Press **PROG/CLOCK SET** to confirm.
 - ↳ The hour digits begin to blink.
- 4 Repeat steps 2 to 3 to set hour and minute.




Note

- To exit clock setting mode without storing, press .
- If no button is pressed in 90 seconds, the unit exits clock setting mode automatically.



Demonstrate the unit's features

In the standby mode, press  until **[DEMO ON]** is displayed.

- ↳ This unit's features are displayed one by one.
- To turn off the demonstration, press  again.

Store radio stations automatically

If no radio stations are stored, the unit can store radio stations automatically.

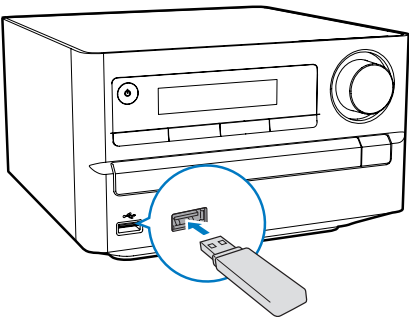
- 1 Press  to turn on the unit.
- 2 Press **FM**.
 - ↳ **[AUTO INSTALL -- PRESS PLAY -- STOP CANCEL]** (press **▶||** to start automatic installation, or press  to cancel) is displayed.
- 3 Press **▶||**.
 - ↳ The radio stations with sufficient signal strength are stored automatically.
 - ↳ After all available radio stations are stored, the first stored radio station broadcasts automatically.

4 Play

Play from disc

- 1 Press **CD** to select the CD source.
- 2 Press **▲**.
 - ↳ The disc compartment opens.
- 3 Place a disc with the printed side facing up.
- 4 Press **▲**.
 - ↳ The disc compartment closes, and play starts automatically.
 - If play does not start, press **◀◀ / ▶▶** to select a track, then press **▶▶**.

Play from USB



Note

- Ensure that the USB device contains playable audio contents in supported formats.

- 1 Insert a USB device into the USB socket.
- 2 Press **USB** to select the USB source.
 - ↳ Play starts automatically.
 - If play does not start automatically, press **ALBUM/PRESET** to select an album and press **◀◀ / ▶▶** to select a track. Then press **▶▶** to start play.

Basic play operations

You can control play through following operations.

Key	Function
◀◀ / ▶▶	Press to select a track or file. Press and hold to search within the track during playback, then release to resume play.
■	Press to stop play.
▶▶	Press to pause/resume play during playback.
DISPLAY	Press to select different play information. Press to show time during USB or Disc playback.
REPEAT/SHUFFLE	Press repeatedly to select a repeat play mode, or return to normal play: [REP] (repeat): play current track repeatedly. [REP ALL] (repeat all): play all tracks repeatedly. [SHUF] (shuffle): play tracks randomly.
VOL +/-	Press to increase/decrease volume.
⌂	Press to mute/restore sound.
DBB	Press to turn on or off dynamic bass enhancement. If DBB is activated, [DBB] is displayed.
DSC	To select your desired sound effect: [POP] (pop) [JAZZ] (jazz) [ROCK] (rock) [FLAT] (flat) [CLASSIC] (classic)

Note

- In DISC mode, you can also use numeric keys to select a track. If you want to select a track number larger than 10, press the first number; and then press the second number within 3 seconds. For example, if you want to select track 15, press the numeric key "1", and then press "5" within 3 seconds.

5 Listen to FM radio

Tune to FM radio stations

Note

- Ensure that you have connected and fully extended the supplied FM antenna.

- 1 Press **FM**.
- 2 Press and hold **◀◀ / ▶▶** to tune to a radio station.
↳ The FM tuner tunes to a station with strong reception automatically.
- 3 Repeat step 2 to tune to more stations.

To tune to a weak station:

Press **◀◀ / ▶▶** repeatedly until you find optimal reception.

Program radio stations automatically

Note

- You can program a maximum of 20 preset radio stations.

In FM tuner mode, press and hold **PROG/CLOCK SET** for 3 seconds to activate automatic programming.

↳ **[AUTO]** (auto) is displayed.

↳ The unit searches for and stores all the FM radio stations automatically and then broadcasts the first preset radio station.

Program radio stations manually

Note

- You can program a maximum of 20 preset radio stations.

- 1 Press **◀◀ / ▶▶** to tune to a radio station.
- 2 Press **PROG/CLOCK SET** to activate programming mode.
- 3 Press **▲ / ▼** to select a number from 1–20 for this radio station.
- 4 Press **PROG/CLOCK SET** to confirm.
↳ The preset number and the frequency of the preset station are displayed.
- 5 Repeat steps 1 to 4 to program other stations.

Note

- To overwrite a preset radio station, store another station in its place.

Tune to a preset radio station

Press **▲ / ▼** to select a preset radio station.

Show RDS information

RDS (Radio Data System) is a service that allows FM stations to show additional information. If you tune to an RDS station, an RDS icon and the station name are displayed.

- 1 Tune to an RDS station.
- 2 Press **RDS** repeatedly to scroll through the following information (if available):
↳ Station name

- ↳ Program type such as **[NEWS]** (news), **[SPORT]** (sport), **[POP M]** (pop music)...
- ↳ RDS clock
- ↳ Frequency

Synchronize clock with RDS

You can synchronize time shown on the unit with that on the RDS station.

- 1 Tune to an RDS radio station that transmits time signals.
- 2 Press **RDS** for over 2 seconds.
 - ↳ **[CT SYNC]** is displayed and the unit reads RDS time automatically.
 - ↳ If no time signal is received, **[NO CT]** is displayed.

Note

- The accuracy of the transmitted time depends on the RDS station that transmits the time signal.

6 Other features

Set alarm timer

This unit can be used as an alarm clock. You can select **[DISC]**, **[TUNER]** or **[USB]** as the alarm source.

Note

- Make sure that you have set the time correctly.

- 1 In standby mode, press and hold **SLEEP/TIMER** until **[TIMER SET]** (timer set) scrolls on the display.
 - ↳ **[SELECT SOURCE]** (select source) then scrolls on the screen.
- 2 Press **SOURCE** repeatedly to select a source: **[DISC]**, **[USB]**, or **[TUNER]**.
- 3 Press **SLEEP/TIMER** to confirm.
 - ↳ The hour digits are displayed and begin to blink.
- 4 Press **▲** / **▼** repeatedly to set hour.
- 5 Press **SLEEP/TIMER** to confirm.
 - ↳ The minute digits are displayed and begin to blink.
- 6 Repeat step 4 to 5 to set minute and volume.
 - ↳ Alarm is set, and **⌚** is displayed.

Activate/deactivate alarm timer

In standby mode, press **SLEEP/TIMER** repeatedly to activate or deactivate timer.

- ↳ If timer is activated, **⌚** is displayed.



Tip

- Alarm timer is not available in AUDIO IN mode.
- If DISC/USB source is selected, yet no disc is placed or no USB connected, the system switches to the tuner source automatically.

Set sleep timer

When the unit is turned on, press **SLEEP/TIMER** repeatedly to select a time period (in minutes).

- ➞ When sleep timer is activated, **zZ** is displayed.
- ➞ To deactivate sleep timer, press **SLEEP/TIMER** again until **zZ** disappears.

Listen to external audio device

You can listen to an external audio device, such as an MP3 player, through this unit.

- 1 Connect the audio device.
 - For audio device with headphone sockets:
Connect a 3.5mm audio link cable (not supplied) to the **AUDIO IN** socket and to the headphone socket on the audio device.
- 2 Press **AUDIO IN** to select AUDIO IN source.
- 3 Play the external audio device.

Listen through headphone

Plug a headphone into the  socket on the unit.

7 Product information



Note

- Product information is subject to change without prior notice.

Specifications

Amplifier

Rated Output Power	25W RMS
Frequency Response	40Hz-20kHz, ± 3 dB
Signal to Noise Ratio	>77dB
AUDIO IN Input	600mV RMS 22 kohm

Disc

Laser Type	Semiconductor
Disc Diameter	12cm/8cm
Support Disc	CD-DA, CD-R, CD-RW, MP3-CD, WMA-CD
Audio DAC	24Bits / 44.1kHz
Total Harmonic Distortion	<0.8% (1 kHz)
Frequency Response	4Hz - 20kHz (44.1kHz)
S/N Ratio	>77dBA

Speakers

Speaker Impedance	6 ohm
Speaker Driver	10 cm full range
Sensitivity	>84dB/m/W \pm 4dB/m/W

Tuner (FM)

Tuning Range	87.5 - 108MHz
Tuning grid	50 KHz
Sensitivity	
- Mono, 26dB S/N Ratio	< 22 dBf
- Stereo, 46dB S/N Ratio	< 43 dBf
Search Selectivity	<28 dBf
Total Harmonic Distortion	<2%
Signal to Noise Ratio	>55 dB

General information

AC power	220-240V~, 50/60Hz
Operation Power Consumption	10W
Eco Standby Power Consumption	<0.5W
Headphone Output	2x15mW 32ohm
USB Direct	Version 2.0 HS
Dimensions	
- Main Unit (W x H x D)	200 x 118 x 210mm
- Speaker Box (W x H x D)	140 x 224 x 140mm
Weight	
- Main Unit	1.2 kg
- Speaker Box	1.05 kg x 2

- Directory nesting up to a maximum of 8 levels
- Number of albums/ folders: maximum 99
- Number of tracks/titles: maximum 999
- ID3 tag v2.0 or later
- File name in Unicode UTF8 (maximum length: 64 bytes)

Unsupported formats:

- Empty albums: an empty album is an album that does not contain MP3/WMA files, and is not be shown in the display.
- Unsupported file formats are skipped. For example, Word documents (.doc) or MP3 files with extension .dlf are ignored and not played.
- AAC, WAV, PCM audio files
- DRM protected WMA files (.wav, .m4a, .m4p, .mp4, .aac)
- WMA files in Lossless format

Supported MP3 disc formats

- ISO9660, Joliet
- Maximum title number: 512 (depending on file name length)
- Maximum album number: 255
- Supported sampling frequencies: 32 kHz, 44.1kHz, 48 kHz
- Supported Bit-rates: 32~320 (kbps), variable bit rates

USB playability information

Compatible USB devices:

- USB flash memory (USB 2.0 or USB1.1)
- USB flash players (USB 2.0 or USB1.1)
- memory cards (requires an additional card reader to work with this unit)

Supported formats:

- USB or memory file format FAT12, FAT16, FAT32 (sector size: 512 bytes)
- MP3 bit rate (data rate): 32-320 Kbps and variable bit rate
- WMA v9 or earlier

8 Troubleshooting



Caution

- Never remove the casing of this unit.

To keep the warranty valid, never try to repair the system yourself.

If you encounter problems when using this unit, check the following points before requesting service. If the problem remains unsolved, go to the Philips web site (www.philips.com/support). When you contact Philips, ensure that your unit is nearby and the model number and serial number are available.

No power

- Ensure that the AC power cord of the unit is connected properly.
- Ensure that there is power at the AC outlet.
- As a power-saving feature, the system switches off automatically 15 minutes after track play reaches the end and no control is operated.

No sound or poor sound

- Adjust the volume.
- Disconnect the headphones.
- Check that the speakers are connected correctly.
- Check if the stripped speaker wires are clamped.

No response from the unit

- Disconnect and reconnect the AC power plug, then turn on the unit again.
- As a power-saving feature, the system switches off automatically 15 minutes after track play reaches the end and no control is operated.

Remote control does not work

- Before you press any function button, first select the correct source with the remote control instead of the main unit.

- Reduce the distance between the remote control and the unit.
- Insert the battery with its polarities (+/- signs) aligned as indicated.
- Replace the battery.
- Aim the remote control directly at the IR sensor on the front of the unit.

No disc detected

- Insert a disc.
- Check if the disc is inserted upside down.
- Wait until the moisture condensation at the lens has cleared.
- Replace or clean the disc.
- Use a finalized CD or correct format disc.

Cannot display some files in USB device

- The number of folders or files in the USB device has exceeded a certain limit. This phenomenon is not a malfunction.
- The formats of these files are not supported.

USB device not supported

- The USB device is incompatible with the unit. Try another one.

Poor radio reception

- Increase the distance between the unit and your TV or VCR.
- Fully extend the FM antenna.
- Connect an outdoor FM antenna instead.

Timer does not work

- Set the clock correctly.
- Switch on the timer.

Clock/timer setting erased

- Power has been interrupted or the power cord has been disconnected.
- Reset the clock/timer.



Specifications are subject to change without notice.

2013 © WOOX Innovations Limited. All rights reserved.

Philips and the Philips' Shield Emblem are registered trademarks of Koninklijke Philips N.V. and are used by WOOX Innovations Limited under license from Koninklijke Philips N.V.

MCM2005_12_UM_V2.0

