

DVD Mini Hi-Fi System

FWD154/98



Quick start guide

1 Connect

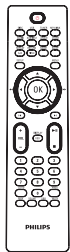
2 Setup

3 Enjoy

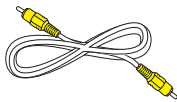
PHILIPS

EN

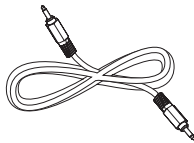
What's in the box



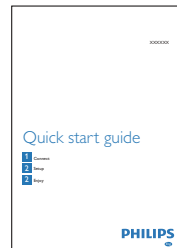
Remote control



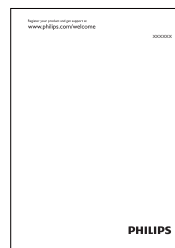
Composite video cable (yellow)



MP3 link cable



Quick start guide

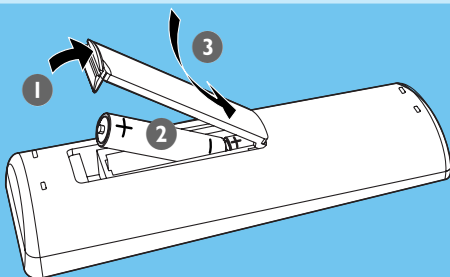


User manual

1 Connect

A

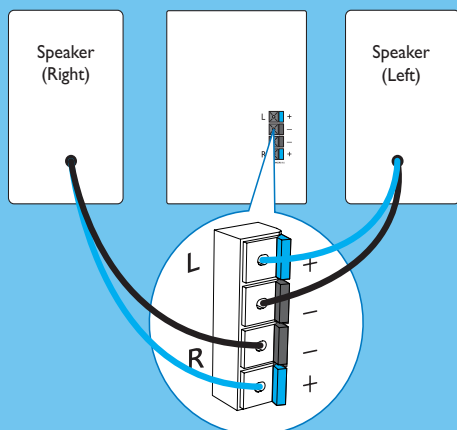
Install remote control batteries



- 1 Open the battery compartment.
- 2 Insert 2 AAA batteries with correct polarity (+/-) as indicated.
- 3 Close the battery compartment.

B

Connect speakers



Note

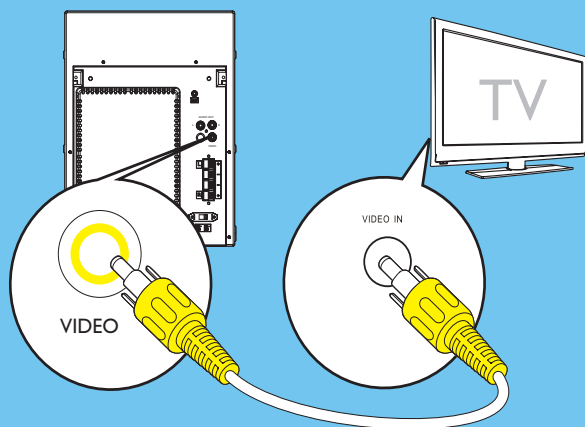
- Ensure that the colors of the speaker wires and terminals are matched.

- 1 Hold down the socket flap.
- 2 Insert the stripped part of the wire completely.
 - Insert the right speaker wires to “R”, left speaker wires to “L”.
 - Insert the blue wires to “+”, black wires to “-”.
- 3 Release the socket flap.

1

Connect

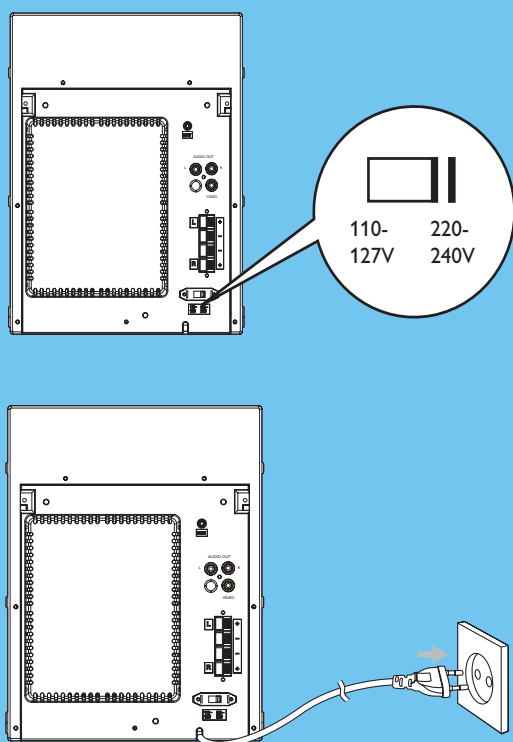
C Connect TV



1 Connect the supplied composite video cable to:

- the **VIDEO** socket on this unit.
- the video input socket on the TV.

D Connect power



! Caution

- Risk of product damage! Ensure that the power supply voltage corresponds to the voltage printed on the back or the underside of the unit.
- Risk of electric shock! When you unplug the AC power cord, always pull the plug from the socket. Never pull the cord.
- Before connecting the AC power cord, ensure you have completed all other connections.

1 Switch the voltage selector to the local power line voltage.

2 Connect the AC power cord to the wall socket.

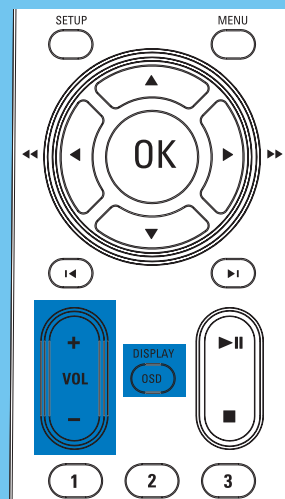
* Tip

- See the User Manual for how to connect other devices to this system.

2 Setup

A Set the clock

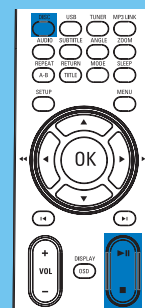
- 1 In standby mode, press and hold **OSD/DISPLAY** on the remote control.
 - ↳ The hour digits are displayed and begin to blink.
- 2 Press **VOL +/-** on the remote control to set the hours.
- 3 Press **OSD/DISPLAY**.
 - ↳ The minute digits are displayed and begin to blink.
- 4 Press **VOL +/-** to set the minutes.
- 5 Press **OSD/DISPLAY** to confirm the time.



3 Enjoy

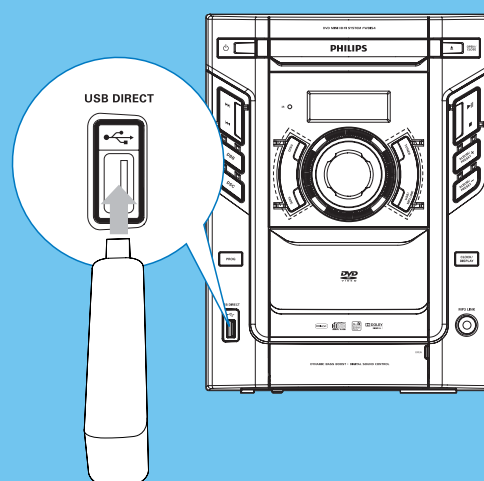
A Play disc

- 1 Press **DISC** to select the disc source.
- 2 Press **OPEN/CLOSE** to open the disc compartment.
- 3 Insert a disc with the printed side facing up, then close the disc compartment.
 - ↳ Play starts automatically.
 - To pause/resume play, press ►||.
 - To stop play, press ■.



B Play from USB

- 1 Insert the USB plug of a USB device into the USB socket.
- 2 Press **USB** to select the USB source.
 - ↳ Play starts automatically.
 - To pause/resume play, press ►||.
 - To stop play, press ■.



3

Enjoy

C Program and tune to radio stations

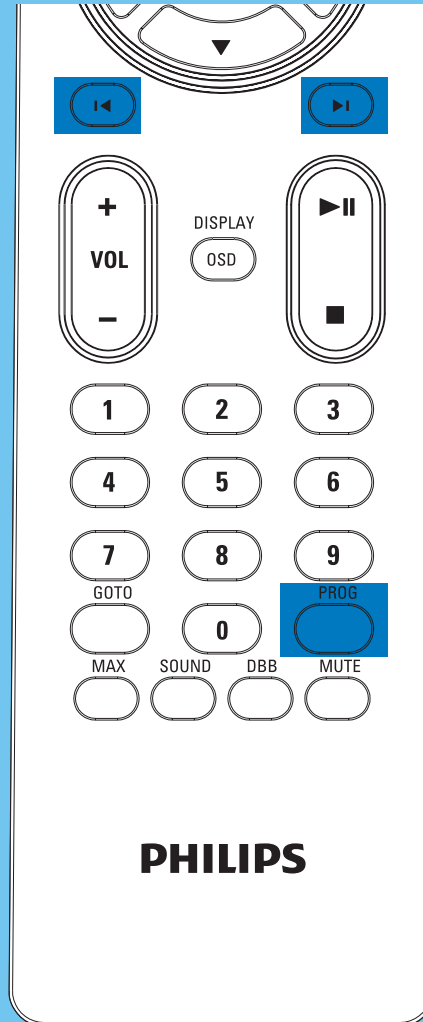
* Tip

- For optimal FM reception, fully extend and adjust the position of the FM antenna.
- For optimal MW reception, adjust the position of the main unit.

1 In tuner mode, press and hold **PROG** for 2 seconds to activate automatic program mode.

- **[AUTO]** (auto) is displayed and begins to blink.
- All available stations are programmed in the order of waveband reception strength.
- The first programmed radio station is broadcast automatically.

2 In tuner mode, press **◀/▶** to select a preset number.



* Tip

- Detailed features and additional functions are described in the user manual.



© Royal Philips Electronics N.V. 2009
All rights reserved.

Specifications are subject to change without notice.
Trademarks are the property of Koninklijke Philips Electronics N.V. or their respective owners.

Printed in China

PDCC-2009

