

# Always there to help you

Register your product and get support at  
[www.philips.com/welcome](http://www.philips.com/welcome)



M100  
Wireless Home Monitor



# User manual

# PHILIPS



# Contents

<b>1</b>	<b>Important</b>	<b>2</b>
	Safety	2
	Notice	2
<b>2</b>	<b>Your wireless home monitor</b>	<b>3</b>
	What's in the box	3
	Product overview	3
<b>3</b>	<b>Placement</b>	<b>4</b>
<b>4</b>	<b>Set-up</b>	<b>5</b>
	Connect Monitor to Wi-Fi network	5
	Use the monitor	5
<b>5</b>	<b>Specifications</b>	<b>7</b>
<b>6</b>	<b>Troubleshooting</b>	<b>8</b>

# 1 Important

---

## Safety

### Caution

- To reduce the risk of fire or electric shock, this apparatus should not be exposed to rain or moisture and objects filled with liquids, such as vases, should not be placed on this apparatus.
- 
- Read these instructions.
  - Keep these instructions.
  - Heed all warnings.
  - Follow all instructions.
  - Do not use this apparatus near water.
  - Clean only with dry cloth.
  - Do not block any ventilation openings. Install in accordance with the manufacturer's instructions.
  - Do not install near any heat sources such as radiators, heat registers, stoves, or other apparatus (including amplifiers) that produce heat.
  - Protect the power cord from being walked on or pinched, particularly at plugs, convenience receptacles, and the point where they exit from the apparatus.
  - Only use attachments/accessories specified by the manufacturer.
  - Unplug this apparatus during lightning storms or when unused for long periods of time.
  - Refer all servicing to qualified service personnel. Servicing is required when the apparatus has been damaged in any way, such as power-supply cord or plug is damaged, liquid has been spilled or objects have fallen into the apparatus, the apparatus has been exposed to rain or moisture, does not operate normally, or has been dropped.
  - Apparatus shall not be exposed to dripping or splashing.

- Do not place any sources of danger on the apparatus (e.g. liquid filled objects, lighted candles).
- Where the plug of the Direct Plug-in Adapter is used as the disconnect device, the disconnect device shall remain readily operable.
- The small parts of this monitor can be swallowed by babies or small children. Keep these parts out of reach of children.

---

## Notice

Any changes or modifications made to this device that are not expressly approved by Philips Consumer Lifestyle may void the user's authority to operate the equipment.

### Disclaimer

If you are on a remote Wi-Fi network or 3G connection, 10 seconds to 15 seconds delay in video and audio streaming to your smartphone can occur.

Your use of Philips In.Sight, which is provided by Yoics Inc., is at your sole risk. Koninklijke Philips Electronics N.V. and its subsidiary companies (individually and collectively "Philips") are not responsible for the operation of such Philips In.Sight or your use thereof and Philips shall have no liability to you related thereto.

\* Wireless and Ethernet LAN functions are authorized for indoor use only.

---

## Open source software

Philips Electronics Hong Kong Ltd. hereby offers to deliver, upon request, a copy of the complete corresponding source code for the copyrighted open source software packages used in this product for which such offer is requested by the respective licenses.

This offer is valid up to three years after product purchase to anyone in receipt of this information. To obtain source code, please contact [open.source@philips.com](mailto:open.source@philips.com). If you prefer not to use email or if you do not receive

confirmation receipt within a week after mailing to this email address, please write to "Open Source Team, Philips Intellectual Property & Standards, P.O. Box 220, 5600 AE Eindhoven, The Netherlands." If you do not receive timely confirmation of your letter; please email to the email address above.

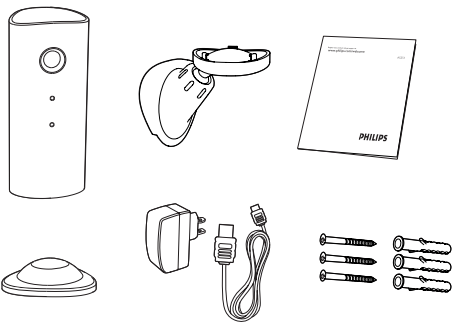
## 2 Your wireless home monitor

Please read and understand the accompanied safety sheet before you use this monitor.

To fully benefit from the support that Philips offers, register your product at [www.philips.com/welcome](http://www.philips.com/welcome).

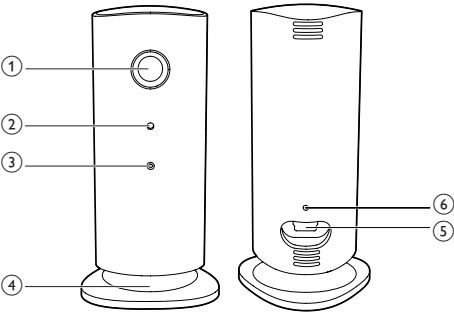
---

### What's in the box



---

### Product overview



- ① Camera lens
- ② Microphone
- ③ LED light
- ④ Magnetic base
- ⑤ DC power connector
- ⑥ Reset key

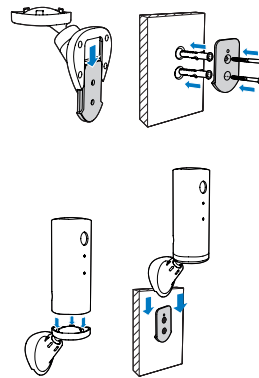
## 3 Placement

You can place the Monitor on a flat surface with the magnetic base. Or you can attach it to the ceiling or wall, see the pictures below:

### Note

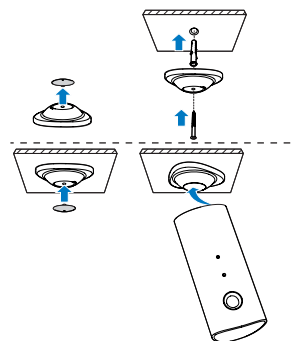
- Before you place the monitor; make sure the monitor is close to a power outlet.
- Before you secure the supplied dowels and screws, drill holes on a flat and hard surface.

### Mount on wall



### Mount on ceiling

If you install on a ceiling, select '**Image Flip** (Image Flip)' in the 'Settings (⚙)' options of your monitor;

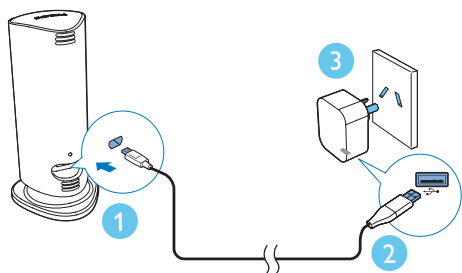


## 4 Set-up

You can see and hear what is happening in your room from anywhere in the world with a smartphone that is connected to network.

### What you need

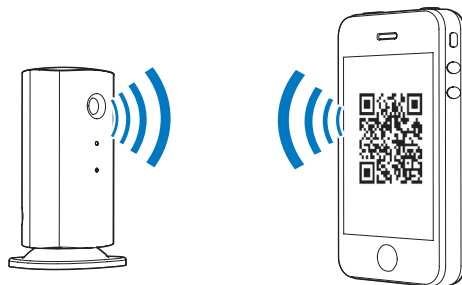
- 1 Make sure your Wi-Fi router is turned on and that your Smartphone or Tablet is wirelessly connected to your Wi-Fi router network.
- 2 Have your Wi-Fi network name (SSID) and Wi-Fi network password available as you need to fill these in. You can look up your Wi-Fi network name in the settings of your phone or tablet.
- 3 Download 'Philips In.Sight' App from Apple App Store.
- 4 Connect the monitor to power. When power is connected, wait till the Monitor light flashes Amber.



### Connect Monitor to Wi-Fi network

- 1 Make sure that your smartphone or tablet is connected to your Wi-Fi network.
- 2 Start the App.

- 3 Log in with your Philips In.Sight account – or create a new account if you don't have an account.
- 4 Follow the on-screen App instructions.
- 5 When prompted, input your Wi-Fi network name and your Wi-Fi password.
  - If you want to set-up another monitor, repeat the steps of '4 – Set-up'.
- 6 In.Sight App will generate a QR code, and hold approx. 15 cm (0,5 ft) in front of the monitor lens.



### Use the monitor

After set-up, you are ready to use the monitor. Launch the Philips In.Sight App on your smartphone or tablet.

You can use the monitor when it is connected to your own Wi-Fi network or any other Wi-Fi network. If there is no Wi-Fi network available, it will work over 3G. Please note that 3G data charges can occur.

After log-in, you will see a thumbnail of the monitor(s). Tap the thumbnail for full screen viewing.

---

## Application Overview

● : Monitor Connection status. Green light dot means the monitor is connected to Wi-Fi, and able to stream video.

🚶 : Motion alert: this highlights with an exclamation mark when the monitor detects motion – enable this in 'Settings'.

🔊 : Audio alert: this highlights with an exclamation mark when the monitor detects audio – enable this in 'Settings'.

👤 : Share Monitor: share your monitor to friends so they can view your monitor – enable this in 'Settings'.

📋 : Monitor list: list all your monitors.

🔔 : Alert list: list the alerts from your monitors.

⚙️ : Settings: settings and options for monitors.

**My Monitors** (My Monitor) tab: Lists your monitors. Pull down and then release to refresh the monitors.

**Friend's** (Friend's) tab: View monitor's video shared by your friends.

**Add** (Add) tab: Add additional monitors.

---

### Take a photo

Tap 📷 to take a picture. The picture is stored on your smartphone.

---

### Record video

Tap 📹 to record a video. The video is directly uploaded to your private Dropbox account. Fill in your Dropbox account details in '⚙️ (Settings)' – **'Monitors** (Monitors)'. Please register yourself for a free account at [Dropbox.com](https://Dropbox.com) if you don't have an account.

---

Note: Before setting up motion alert and audio alert, make sure that you have enabled 'Alert', 'Alert Notification', and 'iOS Notification' in '⚙️ (Settings)'

### Motion alert

If the monitor detects a movement within a specified range, a 30-second video is recorded to your Dropbox account, and you will receive an alert from your smartphone or tablet. You have an overview of all alerts in the 🔔 list. To enable Dropbox upload, fill in your Dropbox account details in '⚙️ (Settings)' – **'Monitors** (Monitors)'.

#### Set-up Motion Alert:

1) Tap ⚙️, and tap a monitor name, and tap **Motion alert** (Motion alert).

2) Drag and resize on the screen view to select the area to be monitored. Use the slider to set a sensitivity level.

Log-in to your Dropbox account to look at the recorded alert video.

---

### Audio alert

If the monitor detects noise within a specified range, a 30-second video is recorded to your Dropbox account, and you will receive an alert from your smartphone or tablet. You have an overview of all alerts in the 🔔 list. To enable Dropbox upload, fill in your Dropbox account details in '⚙️ (Settings)' – **'Monitors** (Monitors)'.

#### Set-up Audio Alert:

1) Tap ⚙️, and tap a monitor name, and tap **Audio alert** (Audio alert).

2) Use the slider to set a sensitivity level.


Log-in to your Dropbox account to look at the recorded alert video.

---



### Share your monitor

Share the monitor's video to your family, friends or colleagues.

1) Tap  from the monitor overview page (you can also enable this in the settings part).


2) Make sure on your friend's smartphone or tablet, the Philips In.Sight App is installed and that an Philips In.Sight Account is created.

3) Fill in the email address of your friend you want to share the monitor with. The email address of your friend must be the same email address used to create the Philips In.Sight Account.

### Watch the monitor on your web browser

After you have registered your account and set up the monitor via your smartphone or tablet, you can also watch it via your favorite web browser (Safari, Chrome, Internet Explorer, Firefox). Enter the following address in your web browser: [www.insightwebview.philips.com](http://www.insightwebview.philips.com)

### Access more options

Tap  to enable or disable more options like audio and movement alerts, turn on or off the monitor light, Dropbox settings, change monitor name, 'Image Flip (Image Flip)' or other settings.

# 5 Specifications



#### Note

- Specifications are subject to change without notice

Output resolution	VGA, QVGA
Lens	F2.8
Frame rate	30 fps at VGA, QVGA
Focus mode	0.4m
Focus range	1 m to infinity
Video format	h.264
Connectivity	Wi-Fi
Power supply	DC 5V, 600mA;  Model name: ASUC30z-050060 (z = a, b, c, and e)  a direct plug-in power adapter with USB output terminal and a different country plug type ('a'=America, 'b'=Britain, 'c'=Australia, 'e'=Europe)
Dimensions (w x h x d)	35.9 x 83.8 x 34.3mm
Net weight	approx. 52g
Operating temperature	0 to 40 degrees celsius
Software supported	iOS 4.3, iPhone 3GS and up, iPod Touch 4th generation and up

# 6 Troubleshooting



## Warning

- Risk of electric shock. Never remove the casing of the monitor.

To keep the warranty valid, never try to repair the monitor yourself.

If you have problems using this monitor, check the following points before you request service. If you still have a problem, register your monitor and get support at [www.philips.com/support](http://www.philips.com/support).

### Cannot connect the monitor to a Wi-Fi network (the monitor light is blinking amber or green).

- If the monitor blinks amber, you can set-up the monitor again - please repeat '4 – Set-up' of this user manual.
- If the monitor still does not work or is blinking green or amber, you may need to reset the monitor by pressing the reset button with a thin object (i.e. paper clip) on the back of the monitor; hold this for 5 seconds. After that, repeat '4 – Set-up' of this user manual.
- Philips In.Sight supports general WEP, WPA and WPA2. Philips recommends using WPA or WPA2 as these are safest Wi-Fi security settings. The Philips In.Sight does not support WEP Sub Key 2, 3, 4. Please change your router settings to WPA or WPA2 if you are not able to connect, refer to your router's user manual.
- To improve wireless performance, avoid using a Wi-Fi channel that is heavily used (e.g. channel 11) or has overlap with a nearby other Wi-Fi network.
- Keep away from potential sources of interference which may affect Wi-Fi signal, such as microwave ovens.
- Unlike legacy solutions, In.Sight does not require port forwarding. There is no risk from leaving ports open on the

network. In.Sight uses secure peer to peer networking solution which provides a secure, encrypted connection each time your camera is viewed from a remote location. To learn more about secure connectivity with Philips In.Sight, visit <http://www.yoics.com>. This method of networking will work with most standard router settings and is also typically compatible with most anti-virus and internet security programs. On-line test diagnostic is available to determine if your network is compatible with these modern internet applications: [http://www.yoics.com/yp\\_diags.php](http://www.yoics.com/yp_diags.php)

### What do the colored LED lights on the monitor mean?

- No light: no power is connected to monitor or 'show monitor light' is disabled in Settings ( \* ).
- Solid amber light: Monitor is booting up
- Blinking amber light: Monitor is ready to set-up, follow App on-screen instructions (refer to '4– Set-Up')
- Blinking green light: Monitor is connecting to Wi-Fi network
- Solid green light: Monitor is connected to Wi-Fi network and ready to use

### Video streaming is slow or has a delay.

- The speed of login and getting the video feed from the monitor highly depends on the speed of the connection you are using.
- The Internet speed either from your Wi-Fi network or 3G/Edge highly influences the performance of the App. The faster the connection speed, the faster you can see the video from the Monitor.
- Philips recommends high-speed Internet connection of 800kbps upload speed or above for your Wi-Fi router.

### When on a remote network (either another Wi-Fi network or on 3G), I can only watch for 5 minutes.

- When on a remote network – either Wi-Fi or on 3G, you can only watch 5 minutes per session. You have unlimited sessions

per day. If you want to watch longer per session, in-app upgrades are available. Go to 'Settings (⚙)' – '**General** (General)' and select '**In.Sight Account** (In.Sight Account)'.

- When you are on your local Wi-Fi network, you have 2 hours viewing time.

**I can only share to 2 friends, how can I share to more friends?**

- When you want to share to more than 2 friends, in-app upgrades are available. Go to 'Settings(⚙)' – '**General** (General)' and select '**In.Sight Account** (In.Sight Account)'.

**Philips Electronics Australia Limited and Philips New Zealand Limited**  
**Warranty against Defects**

In this warranty:

**We or us** means Philips Electronics Australia Limited ACN 008 445 743 or Philips New Zealand Limited (Company Number 1723), and our contact details are set out at the end of this warranty;

**You** means the purchaser or the original end-user of the Goods;

**Supplier** means the authorised distributor or retailer of the Goods that sold you the Goods in Australia or New Zealand; and

**Goods** means the product or equipment which was accompanied by this warranty and purchased in Australia or New Zealand.

If you require assistance with the operation of the product, its features or specifications please call the Philips Consumer Care Centre on 1300 363 391 in Australia or 0800 658 224 in New Zealand.

**Australia:** Our Goods come with guarantees that cannot be excluded under the Australian Consumer Law. You are entitled to a replacement or refund for a major failure and for compensation for any other reasonably foreseeable loss or damage. You are also entitled to have the Goods repaired or replaced if the goods fail to be of acceptable quality and the failure does not amount to a major failure. This is not a complete statement of your legal rights as a consumer.

**New Zealand:** Our Goods come with guarantees that cannot be excluded under the Consumer Guarantees Act 1993. This guarantee applies in addition to the conditions and guarantees implied by that legislation.

**Additional Warranty:**

In addition to the rights and remedies that you have under the Australian Consumer Law, Consumer Guarantees Act of New Zealand or any other applicable law, we provide the following warranty against defects:

1. If, during the first 12 months from their date of purchase from the Supplier (**Warranty Period**), the Goods prove defective by reason of improper workmanship or materials and none of your statutory rights or remedies apply, we will repair or replace the Goods without charge.
2. We do not have to repair or replace the Goods under this Additional Warranty if the Goods have been used for a commercial purpose; misused, improperly or inappropriately installed, operated or repaired; abused; damaged; or not maintained in accordance with the manufacturer's instructions.
3. Even when we do not have to repair or replace the Goods, we may decide to do so anyway. In some cases, we may decide to substitute the Goods with a similar alternative product of our choosing. All such decisions are at our absolute discretion.
4. All such repaired, replaced or substituted Goods continue to receive the benefit of this Additional Warranty for the time remaining on the original Warranty Period.
5. This Additional Warranty is limited to repair, replacement or substitution only. As far as the law permits, we will not be liable for any loss or damage caused to property or persons arising from any cause whatsoever.
6. In order to claim under this Additional Warranty you must telephone us on 1300 363 391 in Australia or 0800 658 224 in New Zealand within the Warranty Period. You will be asked for details of the Goods, a description of the defect and your personal details. Upon accepting your claim, we shall assist you with either returning the Goods to the Supplier for replacement or to the most convenient Philips Authorised Service Centre for your Goods to be repaired. In some case we may require that you return to the Goods to us (at the address below) for repair, replacement or substitution.
  - ☒ All returned Goods must be accompanied by satisfactory proof of purchase which clearly indicates the name and address of the Supplier, the date and place of purchase and identifies product. It is best to provide a legible and unmodified receipt or sales invoice.
  - ☒ You must bear any expense for return of the Goods or otherwise associated with making your claim under this Additional Warranty.
7. This warranty is only valid and enforceable in Australia and New Zealand.

Contact us or the place of purchase for further details.

Philips Electronics Australia Limited  
Level 1, 65 Epping Rd,  
North Ryde, SYDNEY NSW 2113  
**Consumer Care:** 1300 363 391  
**E-mail:** [pceinfo.australia@philips.com](mailto:pceinfo.australia@philips.com)  
**Website:** [www.philips.com/support](http://www.philips.com/support)

Philips New Zealand Limited  
Level 2, 1 Nugent St,  
Grafton, AUCKLAND, 1023  
**Consumer Care:** 0800 658 224  
**Email:** [pceinfo.australia@philips.com](mailto:pceinfo.australia@philips.com)  
**Website:** [www.philips.com/support](http://www.philips.com/support)

August 2011





Specifications are subject to change without notice  
© 2012 Koninklijke Philips Electronics N.V.  
All rights reserved.

M100\_79\_UM\_V1.0

