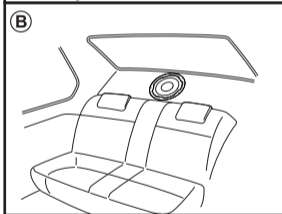
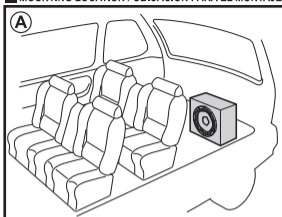
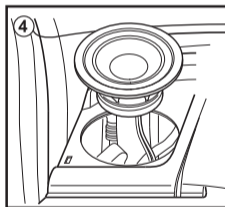
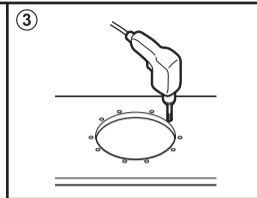
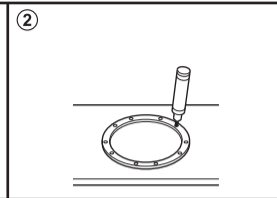
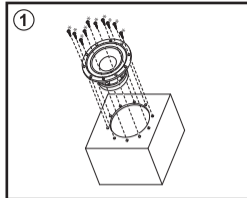


■ MOUNTING LOCATION / UBICACIÓN PARA EL MONTAJE

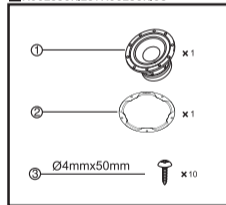


Speaker type.....30cm Subwoofer
 RMS power (Watts)..... 150W
 Peak music power (Watts).....850W
 Sensitivity (dB/W/m)..... 89dB
 Frequency response (Hz)..... 20-1500Hz
 Impedance (Ohms)..... 4 Ohms
 Magnet mass (Oz)..... 55.4 Oz

■ INSTALLATION / INSTALACIÓN



■ ACCESSORIES / ACCESORIOS



Tipo de alto-falante.....Subwoofer de 30 cm
 Potência em RMS (Watts)..... 150W
 Potência de pico musical (Watts)..... 850W
 Sensibilidade (dB/W/m)..... 89dB
 Resposta de frequência (Hz)..... 20-1500Hz
 Impedância (ohms)..... 4 Ohms
 Massa magnética (kg)..... 1,57kg

■ CONNECTION / CONEXIÓN

