

Always there to help you

Register your product and get support at
www.philips.com/support

HTB9550D



User manual

PHILIPS

Contents

1	Help and support	2
	Use onscreen help (user manual)	2
	Navigate onscreen help	2

2	Important	3
	Safety	3
	3D health warning	4
	Care for your product	4
	Care of the environment	4

3	Your home theater	5
	Remote control	5
	Main unit	7
	Connectors	7

4	Connect and set up	9
	Connect speakers	9
	Connect to TV	11
	Connect digital devices through HDMI	12
	Connect audio from TV and other devices	12
	Set up speakers	13
	Set up EasyLink (HDMI-CEC control)	14
	Connect and set up a home network	15

5	Use your home theater	17
	Access the home menu	17
	Discs	18
	Data files	19
	USB storage devices	20
	Audio, video, and picture options	21
	Radio	22
	MP3 player	23
	Smartphone control	23
	Internet radio	24
	Multiview	25
	Browse PC through DLNA	25
	Choose sound	27

6	Change settings	28
	Language settings	28
	Picture and video settings	29
	Audio settings	29
	Parental control settings	29
	Display settings	29
	Energy saving settings	30
	Speaker settings	30
	Restore default settings	30

7	Update software	31
	Check software version	31
	Update software through USB	31
	Update software through the Internet	32
	Update the onscreen help	32

8	Product specifications	33
----------	-------------------------------	----

9	Troubleshooting	37
----------	------------------------	----

10	Notice	40
	Copyright	40
	Open source software	40
	RMVB end user agreement (Asia Pacific and China only)	40
	Compliance	41
	Trademarks	41

11	Language code	43
-----------	----------------------	----

12	Index	44
-----------	--------------	----

1 Help and support

Philips provides extensive online support. Visit our website at www.philips.com/support to:

- download the complete user manual
- print the quick start guide
- watch video tutorials (available only for selected models)
- find answers to frequently answered questions (FAQs)
- email us a question
- chat with our support representative.

Follow the instructions on the website to select your language, and then enter your product model number.

Alternatively, you can contact Philips Consumer Care in your country. Before you contact Philips, note down the model number and serial number of your product. You can find this information on the back or bottom of your product.

Use onscreen help (user manual)

For easy access, the onscreen help (user manual) is stored on your home theater. The onscreen help has two panels.

- The left panel contains two tabs - **Contents** and **Index**. Navigate the **Contents** or **Index** to select a topic. The legends used to display the **Contents** are as follows:
 - ►: Press **OK** to expand the subtopics.
 - ▼: Press **OK** to collapse the subtopics, or press **Navigation buttons** (up/down) to select a topic.
- To move between the left and right panel, press **Navigation buttons** (left/right).

- The right panel contains the content of the selected topic. For additional help on the content, scroll down the page to see **Related topics**.

Use the home theater remote control to select and navigate the onscreen help (see 'Navigate onscreen help' on page 2).

Navigate onscreen help

Press a button on your remote control to use onscreen help.

Button	Action
HELP	Access or exit onscreen help.
OK	Display the selected page, or expand subtopics in Contents .
Navigation buttons	Up: Scroll up or move to the previous page. Down: Scroll down or move to the next page. Right: Navigate to the right panel or next index entry. Left: Navigate to the left panel or previous index entry.
↶ BACK	Move up in the Contents or Index . From the right panel, move to the Contents on the left panel.
◀ (Previous)	Display the last viewed page in history.
▶ (Next)	Display the next page from history.

2 Important

Read and understand all instructions before you use your product. If damage is caused by failure to follow instructions, the warranty does not apply.

Safety

Risk of electric shock or fire!

- Never expose the product and accessories to rain or water. Never place liquid containers, such as vases, near the product. If liquids are spilt on or into the product, disconnect it from the power outlet immediately. Contact Philips Consumer Care to have the product checked before use.
- Never place the product and accessories near naked flames or other heat sources, including direct sunlight.
- Never insert objects into the ventilation slots or other openings on the product.
- Where the mains plug or an appliance coupler is used as the disconnect device, the disconnect device shall remain readily operable.
- Disconnect the product from the power outlet before lightning storms.
- When you disconnect the power cord, always pull the plug, never the cable.

Risk of short circuit or fire!

- Before you connect the product to the power outlet, ensure that the power voltage matches the value printed on the back or bottom of the product. Never connect the product to the power outlet if the voltage is different.

Risk of injury or damage to the home theater!

- For wall-mountable products, use only the supplied wall mount bracket. Secure the wall mount to a wall that can support the combined weight of the product and the wall mount. Koninklijke Philips Electronics N.V. bears no responsibility for improper wall mounting that results in accident, injury or damage.
- For speakers with stands, use only the supplied stands. Secure the stands to the speakers tightly. Place the assembled stands on flat, level surfaces that can support the combined weight of the speaker and stand.
- Never place the product or any objects on power cords or on other electrical equipment.
- If the product is transported in temperatures below 5°C, unpack the product and wait until its temperature matches room temperature before connecting it to the power outlet.
- Visible and invisible laser radiation when open. Avoid exposure to beam.
- Do not touch the disc optical lens inside the disc compartment.
- Parts of this product can be made of glass. Handle with care to avoid injury and damage.

Risk of overheating!

- Never install this product in a confined space. Always leave a space of at least four inches around the product for ventilation. Ensure curtains or other objects never cover the ventilation slots on the product.

Risk of contamination!

- Do not mix batteries (old and new or carbon and alkaine, etc.).
- Danger of explosion if batteries are incorrectly replaced. Replace only with the same or equivalent type.
- Remove batteries if they are exhausted or if the remote control is not to be used for a long time.
- Batteries contain chemical substances, they should be disposed of properly.

Risk of swallowing batteries!

- The product/remote control may contain a coin/button type battery, which can be swallowed. Keep the battery out of reach of children at all times! If swallowed, the battery can cause serious injury or death. Severe internal burns can occur within two hours of ingestion.
- If you suspect that a battery has been swallowed or placed inside any part of the body, seek immediate medical attention.
- When you change the batteries, always keep all new and used batteries out of reach of children. Ensure that the battery compartment is completely secure after you replace the battery.
- If the battery compartment cannot be completely secured, discontinue use of the product. Keep out of reach of children and contact the manufacturer.



This is CLASS II apparatus with double insulation, and no protective earth provided.

3D health warning

- If you or your family has a history of epilepsy or photosensitive seizures, consult a medical professional before exposing yourself to flashing light sources, rapid image sequences or 3D viewing.
- To avoid discomfort such as dizziness, headache or disorientation, we recommend not watching 3D for extended periods of time. If you experience any discomfort, stop watching 3D and do not immediately engage in any potentially hazardous activity (for example driving a car) until your symptoms have disappeared. If symptoms persist, do not resume watching 3D without consulting a medical professional first.

- Parents should monitor their children during 3D viewing and ensure they do not experience any discomfort as mentioned above. Watching 3D is not recommended for children under six years of age as their visual system is not fully developed yet.

Care for your product

- Do not insert any objects other than discs into the disc compartment.
- Do not insert warped or cracked discs into the disc compartment.
- Remove discs from the disc compartment if you are not using the product for an extended period of time.
- Use only microfiber cloth to clean the product.

Care of the environment



Your product is designed and manufactured with high quality materials and components, which can be recycled and reused.



When this crossed-out wheeled bin symbol is attached to a product it means that the product is covered by the European Directive 2002/96/EC. Please inform yourself about the local separate collection system for electrical and electronic products.

Please act according to your local rules and do not dispose of your old products with your normal household waste.

Correct disposal of your old product helps to prevent potential negative consequences for the environment and human health.



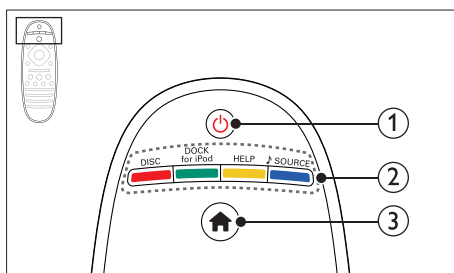
Your product contains batteries covered by the European Directive 2006/66/EC, which cannot be disposed with normal household waste. Please inform yourself about the local rules on separate collection of batteries because correct disposal helps to prevent negative consequences for the environmental and human health.

3 Your home theater

Congratulations on your purchase, and welcome to Philips! To fully benefit from the support that Philips offers (e.g. notification of product software upgrade), register your product at www.philips.com/welcome.

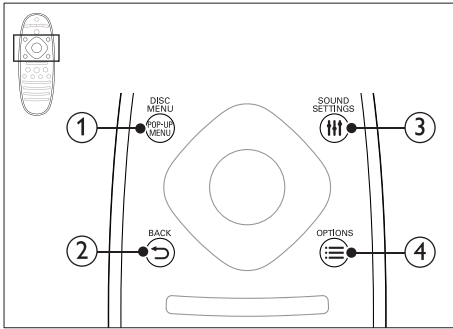
Remote control

This section includes an overview of the remote control.



- ① **⏻ (Standby-On)**
 - Switch the home theater on or to standby.
 - When EasyLink is enabled, press and hold for at least three seconds to switch all connected HDMI CEC compliant devices to standby.
- ② **Source buttons / Color buttons**
 - **Color buttons:** Select tasks or options for Blu-ray discs.
 - **DOCK for iPod:** This feature is not available on this version.
 - **HELP:** Access the onscreen help.
 - **♪ SOURCE:** Select an audio input source or radio source.
- ③ **🏠 (Home)**

Access the home menu.



① POP-UP MENU/DISC MENU

Access or exit the disc menu when you play a disc.

② ↶ BACK

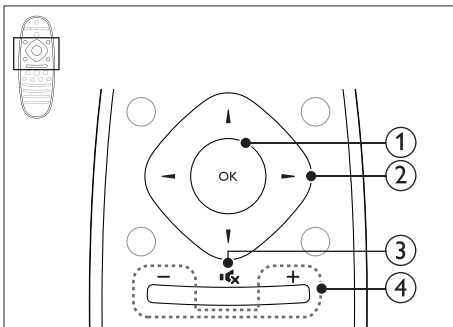
- Return to a previous menu screen.
- In radio mode, press and hold to erase the current preset radio stations.

③ ≡ SOUND SETTINGS

Access or exit sound options.

④ ≡ OPTIONS

- Access more play options while playing a disc or a USB storage device.
- In radio mode, set a radio station.



① OK

Confirm an entry or selection.

② Navigation buttons

- Navigate menus.
- During network and password setup, press left to delete a character.

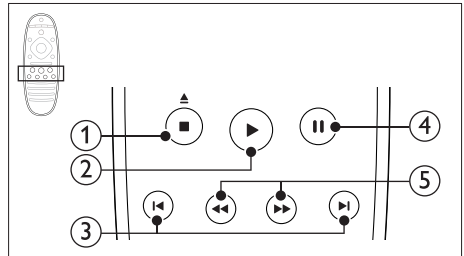
- In radio mode, press left or right to start auto search.
- In radio mode, press up or down to tune the radio frequency.

③ 🔇 (Mute)

Mute or restore volume.

④ +/- (Volume)

Increase or decrease volume, or restore volume when muted.



① ■ (Stop) / ▲ (Open/Close)

- Stop play.
- Press and hold for three seconds to open or close the disc compartment.

② ▶ (Play)

Start or resume play.

③ ◀ / ▶ (Previous/Next)

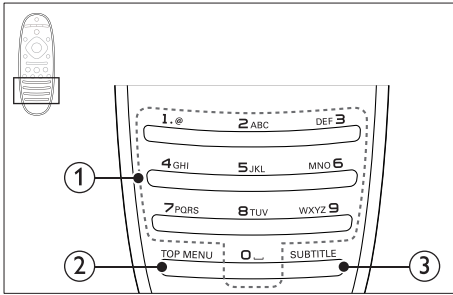
- Skip to the previous or next track, chapter or file.
- In radio mode, select a preset radio station.

④ || (Pause)

Pause play.

⑤ ◀◀ / ▶▶ (Fast Backward/Fast Forward)

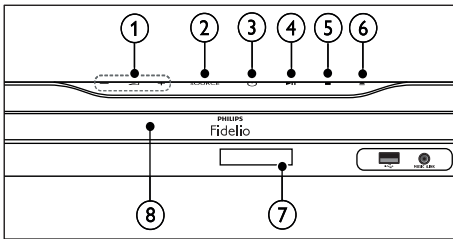
Search backwards or forward. Press repeatedly to change the search speed.



- ① **Alphanumeric buttons**
 - Enter values or letters (using SMS style entry).
 - In radio mode, select a preset radio station.
- ② **TOP MENU**
Access the main menu of a video disc.
- ③ **SUBTITLE**
Select subtitle language for video.

Main unit

This section includes an overview of the main unit.



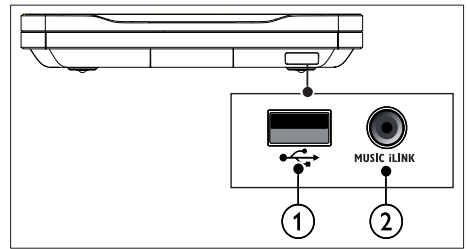
- ① **+/-**
Increase or decrease volume.
- ② **SOURCE**
Select an audio or video source for the home theater.
- ③ **⏻ (Standby-On)**
Switch the home theater on or to standby.

- ④ **▶|| (Play/Pause)**
Start, pause or resume play.
- ⑤ **■ (Stop)**
 - Stop play.
 - In radio mode, press and hold to erase the current preset radio stations.
- ⑥ **▲ (Open/Close)**
Open or close the disc compartment.
- ⑦ **Display panel**
- ⑧ **Disc compartment**

Connectors

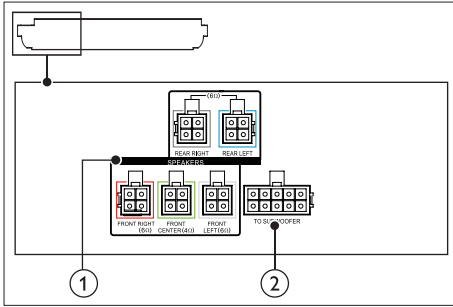
This section includes an overview of the connectors available on your home theater.

Front connectors



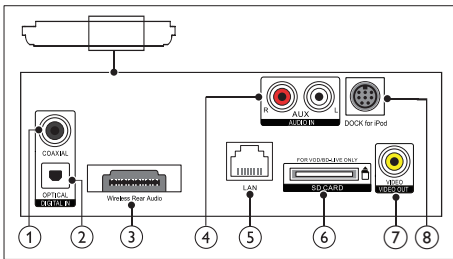
- ① **USB**
Audio, video or picture input from a USB storage device.
- ② **MUSIC iLINK**
 - Audio input from an MP3 player with 3.5mm jack.
 - Connect to auto calibration microphone.

Rear left



- ① **SPEAKERS**
Connect to the supplied speakers.
- ② **TO SUBWOOFER**
Connect to the supplied subwoofer.

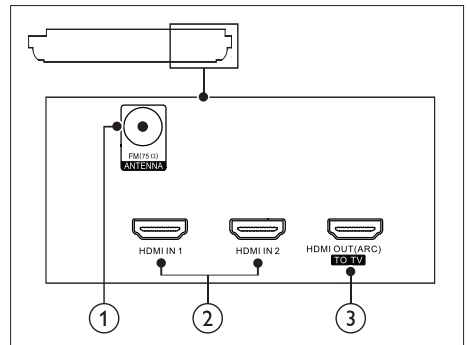
Rear center



- ① **DIGITAL IN-COAXIAL**
Connect to a coaxial audio output on the TV or a digital device.
- ② **DIGITAL IN-OPTICAL**
Connect to an optical audio output on the TV or a digital device.
- ③ **Wireless Rear Audio**
Connect to a Philips wireless module. (Model: Philips RWSS9512, optionally available in your region)
- ④ **AUDIO IN-AUX**
Connect to an analog audio output on the TV or an analog device.

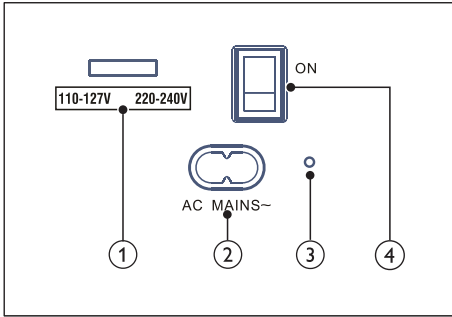
- ⑤ **LAN**
Connect to the LAN input on a broadband modem or router.
- ⑥ **SD CARD FOR VOD/BD-LIVE ONLY (Not available in China)**
Slot for SD card. The SD card is used to access BD-Live only.
- ⑦ **VIDEO-VIDEO OUT**
Connect to the composite video input on the TV.
- ⑧ **DOCK for iPod**
This feature is not available on this version.

Rear right



- ① **ANTENNA FM 75 Ω**
Signal input from an antenna, cable or satellite.
- ② **HDMI IN 1 / HDMI IN 2**
Connect to the HDMI output on a digital device.
- ③ **HDMI OUT (ARC) TO TV**
Connect to the HDMI input on the TV.

Subwoofer connectors



- ① **Voltage selector (For Asia Pacific only)**
Switch the voltage selector to the local power line voltage.
- ② **AC MAINS~**
Connect to the power supply.
- ③ **(Power indicator)**
When the power is on, the power indicator turns red.
- ④ **(Switch on-off)**
Press to switch the power on or off.

4 Connect and set up

This section helps you connect your home theater to a TV and other devices, and then set it up.

For information about the basic connections of your home theater and accessories, see the quick start guide.

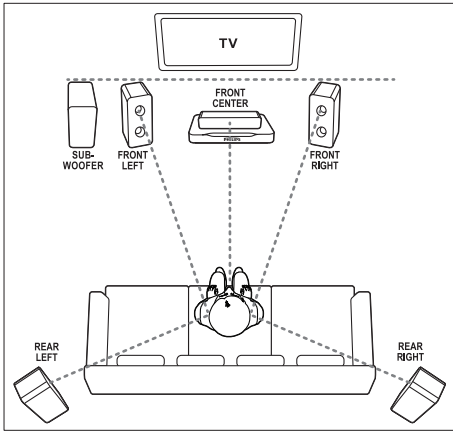
Note

- For identification and supply ratings, see the type plate at the back or bottom of the product.
- Before you make or change any connections, make sure that all devices are disconnected from the power outlet.

Connect speakers

The speaker cables are color-coded for easy connection. To connect a speaker to your home theater, match the color on the speaker cable to the color on the connector:

Speaker position plays a critical role in setting up a surround sound effect. For best effect, position all the speakers towards the seating position and place them close to your ear level (seated).



Note

- Surround sound depends on factors such as room shape and size, type of wall and ceiling, windows and reflective surfaces, and speaker acoustics. Experiment with the speaker positions to find the optimum setting for you.

Follow these general guidelines for speakers placement.

- 1 Seating position:**
This is the center of your listening area.
- 2 FRONT CENTER** (front center) speaker:
Place the center speaker directly in front of the seating position, either above or below your TV.
- 3 FRONT LEFT** (front left) and **FRONT RIGHT** (front right) speakers:
Place the left and right speakers in the front, and at equal distance from the center speaker. Make sure that the left, right, and the center speakers are at equal distance from your seating position.
- 4 REAR LEFT** (rear left) and **REAR RIGHT** (rear right) speakers:
Place the rear surround speakers to the left and right side of your seating position, either in line with it or slightly behind it.

- 5 SUBWOOFER** (subwoofer):
Place the subwoofer at least one meter to the left or right of the TV. Leave about 10-centimeter clearance from the wall.

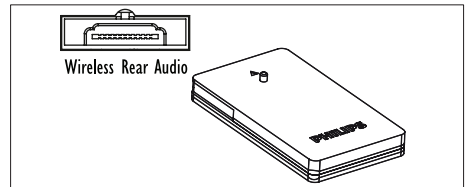
Make your rear speakers wireless

Connect the rear speakers to your home theater wirelessly using a wireless module accessory. For details, see the wireless module user manual.

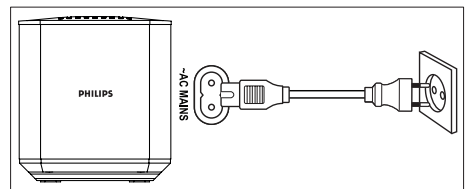
What you need

- A Philips wireless module. (Model: Philips RWSS9512, optionally available in your region)

- 1** Connect the wireless transmitter to the **Wireless Rear Audio** connector on your home theater.



- 2** Connect the rear speakers to the wireless receiver.
- 3** Connect the wireless receiver to the power supply.



Connect to TV

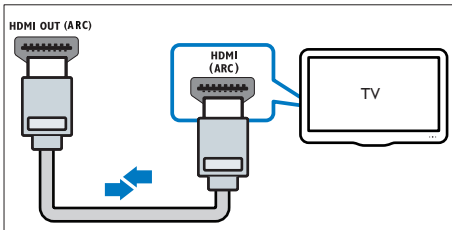
Connect your home theater to a TV to watch videos. You can listen to the TV audio through your home theater speakers.

Use the best quality connection available on your home theater and TV.

Option 1: Connect to TV through HDMI (ARC)

Best quality video

Your home theater supports HDMI version with Audio Return Channel (ARC). If your TV is HDMI ARC compliant, you can hear the TV audio through your home theater by using a single HDMI cable.

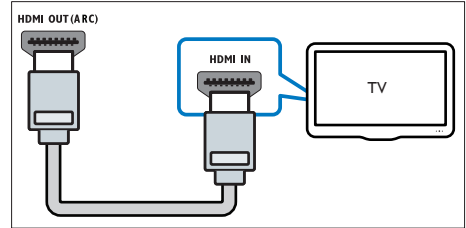


- 1 Using a High Speed HDMI cable, connect the **HDMI OUT (ARC)** connector on your home theater to the **HDMI ARC** connector on the TV.
 - The **HDMI ARC** connector on the TV might be labeled differently. For details, see the TV user manual.
- 2 On your TV, turn on HDMI-CEC operations. For details, see the TV user manual.
 - HDMI-CEC is a feature that enables CEC compliant devices that are connected through HDMI to be controlled by a single remote control, such as volume control for both the TV and the home theater. (see 'Set up EasyLink (HDMI-CEC control)' on page 14)
- 3 If you cannot hear the TV audio through your home theater, set up the audio manually. (see 'Set up the audio' on page 15)

Option 2: Connect to TV through standard HDMI

Best quality video

If your TV is not HDMI ARC compliant, connect your home theater to the TV through a standard HDMI connection.



- 1 Using a High Speed HDMI cable, connect the **HDMI OUT (ARC)** connector on your home theater to the **HDMI** connector on the TV.
- 2 Connect an audio cable to hear the TV audio through your home theater (see 'Connect audio from TV and other devices' on page 12).
- 3 On your TV, turn on HDMI-CEC operations. For details, see the TV user manual.
 - HDMI-CEC is a feature that enables CEC compliant devices that are connected through HDMI to be controlled by a single remote control, such as volume control for both the TV and the home theater. (see 'Set up EasyLink (HDMI-CEC control)' on page 14)
- 4 If you cannot hear the TV audio through your home theater, set up the audio manually. (see 'Set up the audio' on page 15)

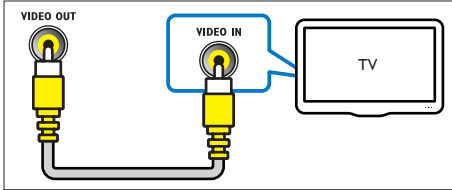
Note

- If your TV has a DVI connector, you can use an HDMI/DVI adapter to connect to TV. However, some of the features may not be available.

Option 3: Connect to the TV through composite video

Basic quality video

If your TV does not have HDMI connectors, use a composite video connection. A composite connection does not support high-definition video.



- 1 Using a composite video cable, connect the **VIDEO OUT** connector on your home theater to the **VIDEO IN** connector on the TV.
 - The composite video connector might be labeled **AV IN**, **COMPOSITE**, or **BASEBAND**.
- 2 Connect an audio cable to hear the TV audio through your home theater (see 'Connect audio from TV and other devices' on page 12).
- 3 When you watch TV programs, press **SOURCE** on your home theater repeatedly to select the correct audio input.
- 4 When you watch videos, switch your TV to the correct video input. For details, see the TV user manual.

Connect digital devices through HDMI

Connect a digital device such as a set-top box, games console, or camcorder to your home theater through a single HDMI connection. When you connect the devices in this way and play a file or game, the

- video is automatically displayed on your TV, and
- audio is automatically played on your home theater.

- 1 Using a High Speed HDMI cable, connect the **HDMI OUT** connector on your digital device to the **HDMI IN 1/2** on your home theater.
- 2 Connect your home theater to TV through **HDMI OUT (ARC)**.
 - If the TV is not HDMI CEC compliant, select the correct video input on your TV.
- 3 On the connected device, turn on HDMI-CEC operations. For details, see the user manual of the device.
 - If you cannot hear the digital device audio through your home theater, set up the audio manually. (see 'Set up the audio' on page 15)
 - You can also press **SOURCE** on your home theater repeatedly to select the correct HDMI input.

Connect audio from TV and other devices

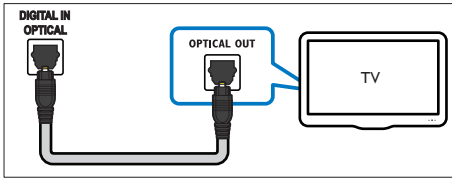
Play audio from TV or other devices through your home theater speakers. Use the best quality connection available on your TV, home theater, and other devices.

Note

- When your home theater and TV are connected through HDMI ARC, an audio connection is not required (see 'Option 1: Connect to TV through HDMI (ARC)' on page 11).

Option 1: Connect audio through a digital optical cable

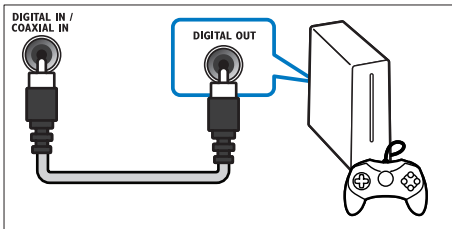
Best quality audio



- 1 Using an optical cable, connect the **OPTICAL** connector on your home theater to the **OPTICAL OUT** connector on the TV or other device.
 - The digital optical connector might be labeled **SPDIF** or **SPDIF OUT**.

Option 2: Connect audio through a digital coaxial cable

Good quality audio

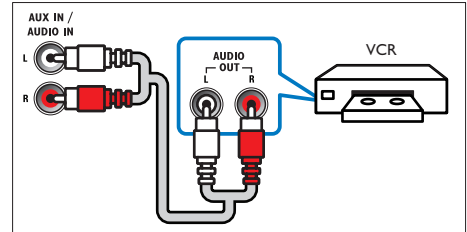


- 1 Using a coaxial cable, connect the **COAXIAL** connector on your home theater to the **COAXIAL/DIGITAL OUT** connector on the TV or other device.
 - The digital coaxial connector might be labeled **DIGITAL AUDIO OUT**.

Option 3: Connect audio through analog audio cables

Basic quality audio

- 1 Using an analog cable, connect the **AUX** connectors on your home theater to the **AUDIO OUT** connectors on the TV or other device.



Set up speakers

When you set up your home theater for the first time, the setup menu prompts you to set up your speakers for surround sound experience. If you move your speakers, or change the layout or room, set up your speakers again in one of the following ways:

- Automatic setup: Set up the speakers automatically by using a calibration microphone.
- Manual setup: Set up the speakers manually through the home theater setup menu.

Before you start

Make the necessary connections described in the quick start guide, and then switch the TV to the correct source for your home theater.

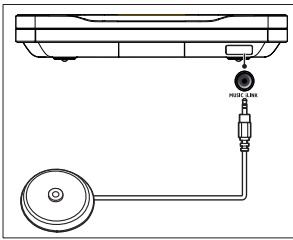
Automatic calibration

When you turn on your home theater for the first time, the setup menu prompts you to calibrate your speakers for the best surround sound. If you move the speakers, use the calibration microphone to calibrate the sound again.

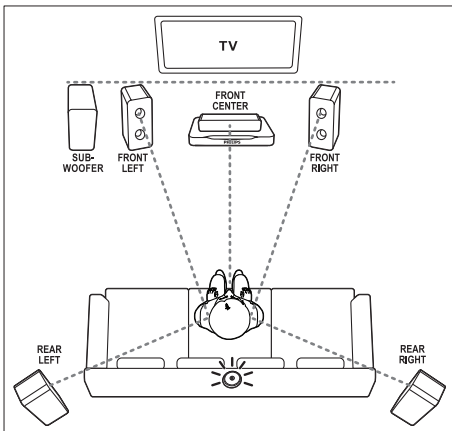
Before you start, check that:

- The calibration microphone is less than 5 meters (16 feet) from each of the speakers. If it is more, set up your speakers manually (see 'Manual setup' on page 14).
- There is nothing between the speakers and the microphone to block the sound.
- The room is quiet. For example, switch off your TV or radio, close doors and windows, and switch off your air conditioning.

- 1 Connect the calibration microphone to the **MUSIC iLINK** connector on your home theater.



- 2 Place the calibration microphone as close to the seating position as possible, at ear height.



- 3 Press **⬆** (Home), and then select **[Setup]**.
- 4 Select **[Audio]** > **[Auto speaker setup (recommended)]**.

- 5 Follow the onscreen instructions to set up the sound.
 - It is normal to hear the test tones from the speakers. Do not change the volume or move the speakers, and make sure that you keep quiet until the calibration is complete.
- 6 After the auto calibration, disconnect the calibration microphone and save it for future use.

Manual setup

Set up the speakers manually to experience customized surround sound.

Before you start

Make the necessary connections described in the quick start guide, and then switch the TV to the correct source for your home theater.

- 1 Press **⬆** (Home).
- 2 Select **[Setup]**, and then press **OK**.
- 3 Select **[Audio]** > **[Manual speaker setup (Advanced)]**.
- 4 Enter the distance for each speaker, and then listen to the test tones and change the volume. Experiment with the speaker positions to find the ideal setting.

Set up EasyLink (HDMI-CEC control)

This home theater supports Philips EasyLink, which uses the HDMI-CEC (Consumer Electronics Control) protocol. EasyLink-compliant devices that are connected through HDMI can be controlled by a single remote control.

Note

- Depending on the manufacturer, HDMI-CEC is known by many names. For information on your device, see the user manual of the device.
- Philips does not guarantee 100% interoperability with all HDMI-CEC devices.

Before you start

- Connect your home theater to the HDMI-CEC compliant device through HDMI connection.
- Make the necessary connections described in the quick start guide, and then switch the TV to the correct source for your home theater.

Enable EasyLink

- 1 Press **⬆** (Home).
- 2 Select **[Setup]**, and then press **OK**.
- 3 Select **[EasyLink] > [EasyLink] > [On]** .
- 4 On your TV and other connected devices, turn on HDMI-CEC control. For details, see the user manual of the TV or other devices.
 - On your TV, set the audio output to 'Amplifier' (instead of TV speakers). For details, see the TV user manual.

EasyLink controls

With EasyLink, you can control your home theater, TV, and other connected HDMI-CEC compliant devices with a single remote control.

- **[One Touch Play]** (One-touch play): When a video disc is in the disc compartment, press **▶** (Play) to wake up the TV from standby, and then play a disc.
- **[One Touch Standby]** (One-touch standby): If one-touch standby is enabled, your home theater can switch to standby with the remote control of the TV or other HDMI-CEC devices.
- **[System Audio Control]** (System audio control): If system audio control is enabled, the audio of the connected device is output through your home theater speakers automatically when you play the device.
- **[Audio Input Mapping]** (Audio input mapping): If system audio control does not work, map the connected device to the correct audio input connector on your home theater. (see 'Set up the audio' on page 15)

Note

- To change the EasyLink control settings, press **⬆** (Home), select **[Setup] > [EasyLink]**.

Set up the audio

If you cannot hear the audio output of a connected device through your home theater speakers, do the following:

- Check that you have enabled EasyLink on all the devices, (see 'Set up EasyLink (HDMI-CEC control)' on page 14) and
- on your TV, set the audio output to "Amplifier" (instead of TV speakers). For details, see the TV user manual, and
- setup the EasyLink audio control.

- 1 Press **⬆** (Home).
- 2 Select **[Setup]**, and then press **OK**.
- 3 Select **[EasyLink] > [System Audio Control] > [On]**.
 - To play the audio from the TV speakers, select **[Off]**, and skip the following steps.
- 4 Select **[EasyLink] > [Audio Input Mapping]**.
- 5 Follow the onscreen instructions to map the connected device to the audio inputs on your home theater.
 - If you connect your home theater to the TV through an **HDMI ARC** connection, make sure that the TV audio is mapped to the ARC input on your home theater.

Connect and set up a home network

Connect your home theater to a network router through wired or wireless network connection, and enjoy:

- Streamed multimedia content

- Smartphone control (see 'Smartphone control' on page 23)
- Internet radio (see 'Internet radio' on page 24)
- Software update (see 'Update software through the Internet' on page 32)

! Caution

- Familiarize yourself with the network router; media server software and networking principles. If necessary, read documentation that accompanies the network components. Philips is not responsible for lost, damaged, or corrupt data.

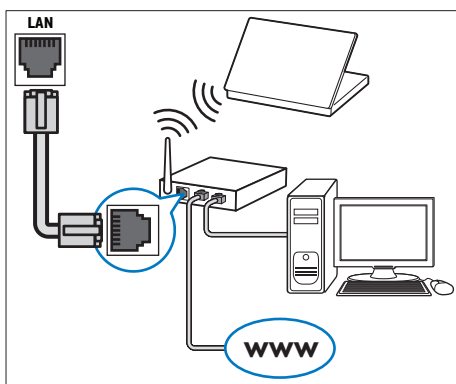
Before you start

- Make the necessary connections described in the quick start guide, and then switch the TV to the correct source for your home theater.

Set up the wired network

What you need

- A network cable (RJ45 straight cable).
- A network router (with DHCP enabled).



- 1 Using a network cable, connect the LAN connector on your home theater to the network router.
- 2 Press **⬆** (Home).
- 3 Select **[Setup]**, and then press **OK**.

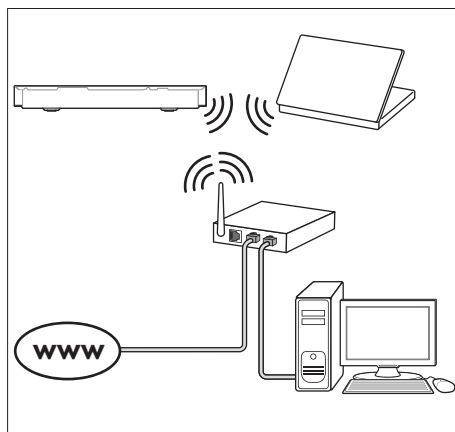
- 4 Select **[Network]** > **[Network installation]** > **[Wired (Ethernet)]**.
- 5 Follow the onscreen instructions to complete the setup.
 - If connection fails, select **[Retry]**, and then press **OK**.
- 6 Select **[Finish]**, and then press **OK** to exit.
 - To view the network settings, select **[Setup]** > **[Network]** > **[View network settings]**.

Set up the wireless network

Your home theater has a built-in Wi-Fi for easy access to a wireless network.

What you need

- A network router (with DHCP enabled). For best wireless performance, coverage, and compatibility, use 802.11n router.



- 1 Press **⬆** (Home).
- 2 Select **[Setup]**, and then press **OK**.
- 3 Select **[Network]** > **[Network installation]** > **[Wireless (Wi-Fi)]**, and then press **OK**.
- 4 Follow the onscreen instructions to select and set up the wireless network.
 - If connection fails, select **[Retry]**, and then press **OK**.
- 5 Select **[Finish]**, and then press **OK** to exit.

- To view the network settings, select **[Setup] > [Network] > [View wireless settings]**.

Personalize the network name

Name your home theater to easily identify it on your home network.

- 1 Press **▲ (Home)**.
- 2 Select **[Setup]**, and then press **OK**.
- 3 Select **[Network] > [Name your Product:]**.
- 4 Press the **Alphanumeric buttons** to enter the name.
- 5 Select **[Done]**, and then press **OK** to exit.

5 Use your home theater

This section helps you use the home theater to play media from a wide range of sources.

Before you start

- Make the necessary connections described in the quick start guide and the user manual.
- Complete the first-time setup. First-time setup appears when you turn on your home theater for the first time or if you do not complete the setup.
- Switch the TV to the correct source for your home theater (for example, HDMI, AV IN).

Access the home menu

The home menu provides easy access to connected devices, setup and other useful features in your home theater.

- 1 Press **▲ (Home)**.
↳ The home menu is displayed.
- 2 Press the **Navigation buttons** and **OK** to select the following:
 - **[play Disc]**: Start disc play.
 - **[browse USB]**: Access the USB content browser
 - **[browse iPod]**: This feature is not available on this version.
 - **[Smart TV]**: This feature is not available on this version.
 - **[Internet Radio]**: Access Internet radio through your home theater.
 - **[browse PC]**: Access the computer content browser.
 - **[HDMI 1]**: Select the digital device connected to **HDMI IN 1** on your home theater.

- **[HDMI 2]:** Select the digital device connected to **HDMI IN 2** on your home theater.
- **[Setup]:** Access menus to change video, audio and other settings.
- **[Help]:** Access onscreen user manual.

3 Press **⬆️ (Home)** to exit.

Discs

Your home theater can play DVDs, VCDs, CDs, and Blu-ray discs. It can also play discs that you've made at home, such as CD-R discs of photos, videos, and music.

1 Insert a disc into the home theater.

2 If the disc does not play automatically, press **DISC** or select **[play Disc]** from the home menu.

3 Use the remote control to control play (see 'Play buttons' on page 18).

- It is normal to hear a little noise when you play a Blu-ray disc. This does not mean that your home theater is faulty.

Play buttons

Button	Action
Navigation buttons	Navigate menus. Up/Down: Rotate the picture clockwise or counter-clockwise.
OK	Confirm an entry or selection.
▶ (Play)	Start or resume play.
⏸	Pause play.
■	Stop play.
▲	Press and hold for three seconds to open or close the disc compartment.
⏮ / ▶	Skip to the previous or next track, chapter or file.
⏪ / ▶▶	Search fast backwards or forward. When a video is paused, search slow backwards or forward.
SUBTITLE	Select subtitle language for video.

Button	Action
DISC/POP-UP MENU	Access or exit the disc menu.
☰	Access the advanced options when you play your audio, video, or media files (see 'Audio, video, and picture options' on page 21).

Synchronize picture and sound

If the audio and video are not synchronized, delay the audio to match the video.

1 Press **⏸ SOUND SETTINGS**.

2 Select **AUD SYNC**, and then press **OK**.

3 Press the **Navigation buttons** (up/down) to synchronize the audio with the video.

4 Press **OK** to confirm.

Play Blu-ray 3D disc

Your home theater can play Blu-ray 3D video. Read the 3D health warning before playing a 3D disc.

What you need

- A 3D TV
- A pair of 3D glasses that are compatible with your 3D TV
- A 3D Blu-ray video
- A high speed HDMI cable

1 Using the high speed HDMI cable, connect your home theater to a 3D compatible TV.

2 Make sure that the 3D video setting is enabled. Press **⬆️ (Home)**, select **[Setup] > [Video] > [Watch 3D video] > [Auto]**.

- To play 3D discs in 2D mode, select **[Off]**.

3 Play a Blu-ray 3D disc and put on the 3D glasses.

- During video search and in certain play modes, the video is displayed in 2D. The video display returns to 3D when you resume play.

Note

- To avoid flickering, change the brightness of the display.

Bonus View on Blu-ray

On Blu-ray discs that support the Bonus View, enjoy extra content such as commentaries in a small screen window. Bonus View is also known as picture-in-picture.

- 1 Enable Bonus View in the Blu-ray disc menu.
- 2 While you play the movie, press **≡**
OPTIONS.
↳ The options menu is displayed.
- 3 Select **[PIP selection] > [PIP]**.
 - Depending on the video, PIP menu [1] or [2] is displayed.
 - To disable Bonus View, select **[Off]**.
- 4 Select **[2nd audio language]** or **[2nd Subtitle Language]**.
- 5 Select the language, and then press **OK**.

BD-Live on Blu-ray

Access additional features on the Blu-ray discs with BD-Live content, such as internet chats with the director; the latest movie trailers, games, wallpaper, and ringtones. BD-Live services and content vary from disc to disc.

What you need

- Blu-ray disc with BD-Live content.
 - Storage device:
 - a USB storage device, with at least 1 GB of memory, or
 - an SD memory card of type SDHC Class 6, with at least 8 GB of memory.
- 1 Connect your home theater to a home network with Internet access (see 'Connect and set up a home network' on page 15).

- 2 Connect a USB storage device or insert a SD memory card to your home theater.
 - If prompted, follow the onscreen instructions to format the SD memory card.
 - After formatting, the SD card will no longer be compatible with computers or cameras, unless formatted again using Linux operating system.
- 3 Press **↑ (Home)** and select **[Setup]**.
- 4 Select **[Advanced] > [Local storage]**.
- 5 Select **[USB]** or **[SD card]**.
 - Use either a USB storage device or SD memory card to store the downloaded BD-Live content.
- 6 Select **[Advanced] > [BD-Live security] > [Off]** to enable BD-Live.
 - To disable BD-Live, select **[On]**.
- 7 Select the BD-Live icon in the disc menu, and then press **OK**.
↳ BD-Live starts to load. The loading time depends on the disc and your internet connection.
- 8 Press the **Navigation buttons** to navigate BD-Live, and then press **OK** to select an option.

Note

- To clear the memory on the storage device, press **↑ (Home)**, select **[Setup] > [Advanced] > [Clear memory]**.

Data files

Your home theater can play pictures, audio and video files contained in a disc or a USB storage device. Before you play a file, check that the file format is supported by your home theater (see 'File formats' on page 34).

- 1 Play the files from a disc or USB storage device.

- 2 To stop play, press **■**.
 - To resume the video from where you stopped, press **▶ (Play)**.
 - To play the video from the start, press **OK**.

Note

- To play DivX DRM protected files, connect your home theater to a TV through an HDMI cable.

Subtitles

If your video has subtitles in multiple languages, select a subtitle language.

Note

- Make sure that the subtitle file has the exact same name as the video file. For example, if the video file is named 'movie.avi', name the subtitle file as 'movie.srt' or 'movie.sub'.
- Your home theater supports the following file formats: .srt, .sub, .txt, .ssa, .ass, .smi, and .sami. If the subtitles do not appear correctly, change the character set.

- 1 While playing video, press **SUBTITLE** to select a language.
- 2 For DivX or RMVB/RM videos, if the subtitles do not appear correctly, continue the following steps to change the character set.
- 3 Press **OPTIONS**.
 - ↳ The options menu is displayed.
- 4 Select **[Character set]**, and then select a character set that supports the subtitle.

Europe, India, LATAM, and Russia

Character Set	Language
[Standard]	English, Albanian, Danish, Dutch, Finnish, French, Gaelic, German, Italian, Kurdish (Latin), Norwegian, Portuguese, Spanish, Swedish and Turkish

Character Set	Language
[Central Europe]	Albanian, Croat, Czech, Dutch, English, German, Hungarian, Irish, Polish, Romanian, Slovak, Slovene and Serbian
[Cyrillic]	Bulgarian, Belorussian, English, Macedonian, Moldavian, Russian, Serbian and Ukrainian
[Greek]	Greek
[Baltic]	Estonian, Latvian and Lithuanian

Asia Pacific and China

Character Set	Language
[Chinese]	Simplified Chinese
[Standard]	Albanian, Danish, Dutch, English, Finnish, French, Gaelic, German, Italian, Kurdish (Latin), Norwegian, Portuguese, Spanish, Swedish, Turkish
[Chinese-Traditional]	Traditional Chinese
[Korean]	English and Korean

VOD code for DivX

Before you purchase DivX videos and play them on your home theater, register the home theater on www.divx.com using the DivX VOD code.

- 1 Press **▲ (Home)**.
- 2 Select **[Setup]**, and then press **OK**.
- 3 Select **[Advanced] > [DivX® VOD Code]**.
 - ↳ The DivX VOD registration code for your home theater is displayed.

USB storage devices



Enjoy pictures, audio, and video stored on a USB storage device such as an MP4 player or digital camera.

What you need

- A USB storage device that is formatted for FAT or NTFS file systems, and complies with the Mass Storage Class.
- A media file in one of the supported file formats (see 'File formats' on page 34).

Note

- If you use a USB extension cable, USB HUB, or USB multi-reader; the USB storage device may not be recognized.


- 1 Connect a USB storage device to the  (USB) connector on your home theater.
- 2 Press  (Home).
- 3 Select **[browse USB]**, and then press **OK**.
↳ A content browser is displayed.
- 4 Select a file, and then press **OK**.
- 5 Press the play buttons to control play (see 'Play buttons' on page 18).

Audio, video, and picture options

Use advanced features when you play pictures, audio and video files from a disc or a USB storage device.


Audio options

While playing audio, repeat an audio track, a disc, or a folder.

- 1 Press  **OPTIONS** repeatedly to cycle through the following functions:
 - **RPT TRAC / RPT FILE**: Repeat the current track or file.
 - **RPT DISC / RPT FOLD**: Repeat all the tracks on the disc or the folder.
 - **RPT RDOM**: Play audio tracks in random order.
 - **RPT OFF**: Turn off the repeat mode.

Video options

While watching video, select options such as subtitles, audio language, time search, and picture settings. Depending on the video source, some options are not available.

- 1 Press  **OPTIONS**.
↳ The video options menu is displayed.
- 2 Press the **Navigation buttons** and **OK** to select and change:
 - **[Audio language]**: Select audio language for video.
 - **[Subtitle Language]**: Select subtitle language for video.
 - **[Subtitle shift]**: Change the subtitle position on the screen.
 - **[Info]**: Display information about what is playing.
 - **[Character set]**: Select a character set that supports the external DivX subtitle.
 - **[Time search]**: Skip to a specific part of the video by entering the time of the scene.
 - **[2nd audio language]**: Select the second audio language for Blu-ray video.
 - **[2nd Subtitle Language]**: Select the second subtitle language for Blu-ray video.
 - **[Titles]**: Select a specific title number.
 - **[Chapters]**: Select a specific chapter number.
 - **[Angle list]**: Select a different camera angle.
 - **[Menus]**: Display the disc menu.
 - **[PIP selection]**: Display Picture-in-Picture window when playing a Blu-ray disc that supports the Bonus View.
 - **[Zoom]**: Zoom into a video scene or picture. Press the **Navigation buttons** (left/right) to select a zoom factor.
 - **[Repeat]**: Repeat a chapter or title.
 - **[Repeat A-B]**: Mark two points within a chapter or track to repeat play, or turn off the repeat mode.

- **[Picture settings]:** Select a predefined color setting.
- **[Audio sync]:** Delay the audio to match the video.
- **[2D to 3D]:** View 2D or 3D video.

Picture options

While viewing a picture, zoom into the picture, rotate it, add animation to a slideshow, and change the picture settings.

- 1 Press **≡** **OPTIONS**.
↳ The picture options menu appears.
- 2 Press the **Navigation buttons** and **OK** to select and change the following settings:
 - **[Rotate +90]:** Rotate the picture 90 degree clockwise.
 - **[Rotate -90]:** Rotate the picture 90 degree counter-clockwise.
 - **[Zoom]:** Zoom into a video scene or picture. Press the **Navigation buttons** (left/right) to select a zoom factor.
 - **[Info]:** Display picture information.
 - **[Duration per slide]:** Select the display speed for each picture in a slide show.
 - **[Slide animation]:** Select animation for the slide show.
 - **[Picture settings]:** Select a predefined color setting.
 - **[Repeat]:** Repeat a selected folder.
 - **[2D to 3D]:** View 2D or 3D photo slideshow.

Musical slideshow

If the picture and audio files are from the same disc or USB storage device, you can create a musical slideshow.

- 1 Select an audio track, and then press **OK**.
- 2 Press **↶** **BACK**, and go to the picture folder.
- 3 Select a picture, and then press **▶** **(Play)** to start the slideshow.
- 4 Press **■** to stop slideshow.
- 5 Press **■** again to stop music.

Note

- Make sure that the picture and audio formats are supported by your home theater (see 'File formats' on page 34).

Radio

Listen to FM radio on your home theater, and store up to 40 radio stations.

Note

- AM and digital radio are not supported.
- If no stereo signal is detected, you are prompted to install the radio stations again.

- 1 Connect the FM antenna to the **ANTENNA FM 75 Ω** on your home theater.
 - For the best reception, place the antenna away from your TV or other sources of radiation.
- 2 Press **♪** **SOURCE** repeatedly until **RADIO** appears on the display panel.
 - ↳ If you have already installed the radio stations, the last channel that you listened to is played.
 - ↳ If you have not installed any radio stations, the message **AUTO INSTALL...PRESS PLAY** appears on the display panel. Press **▶** **(Play)**.
- 3 Use the remote control to listen to or change radio stations.

Play buttons

Button	Action
◀ / ▶	Select a preset radio station.
or Alphanumeric buttons	

Button	Action
Navigation buttons	Left/Right: Search for a radio station. Up/Down: Fine tune a radio frequency.
■	Press to stop the installation of radio stations.
↶ BACK	Press and hold to erase the preset radio station.
☰ OPTIONS	Manual: 1) Press ☰ OPTIONS . 2) Press ◀/ ▶ to select your preset. 3) Press ☰ OPTIONS again to store the radio station. Automatic: Press and hold for three seconds to reinstall the radio stations.
SUBTITLE	Toggle between the stereo and mono sounds.

Tuning grid

In some countries, you can toggle the FM tuning grid between 50 kHz and 100 kHz. When you switch the tuning grid, all preset radio stations are erased.

- 1 Press **J SOURCE** repeatedly until **RADIO** appears on the display panel.
- 2 Press ■.
- 3 Press and hold **▶ (Play)** to toggle between 50 kHz or 100 kHz.

MP3 player

Connect a MP3 player to play audio files.

What you need

- An MP3 player.
- A 3.5mm stereo audio cable.

- 1 Using the 3.5mm stereo audio cable, connect the MP3 player to the **MUSIC iLINK** connector on your home theater.

- If you use 6.5mm stereo audio cable, connect the MP3 player to your home theater using a 3.5mm - 6.5mm converter jack.

- 2 Press **J SOURCE** repeatedly until **MUSIC I-LINK** appears on the display panel.

- 3 Press the buttons on the MP3 player to select and play audio files.

Smartphone control

Use your mobile device such as iPhone (iOS 3.1.3 and above), Android phone (2.1 and above), iPad, or tablet to:

- Control your home theater
- Browse a data disc or USB storage device
- Switch to FM radio or Internet radio
- Personalize your sound settings
- Stream and share content from the devices on your home network

Before you start

- Connect your home theater, mobile device, and other DLNA-compatible devices to the same home network.
 - For better video quality, use wired connection whenever possible.
- Personalize the network name for your home theater (see 'Personalize the network name' on page 17).
- Download Philips **MyRemote** application on your mobile device.
 - For iPhone or iPad, search for the app in **App Store** (App Store).
 - For Android based phone or tablet, search for the app in **Market** (Market).

Control your home theater

- 1 On the mobile device, access **MyRemote** application.
- 2 Select your home theater (by its network name) from the home screen.
 - ↳ A browsing bar is displayed at the bottom of the screen.

- If your home theater is not found, check the network connection or tap the **Devices** tab on your mobile device to search again.

- 3** Select one of the following tabs to access more options.
- To return to the previous screen, press back button.

Option	Action
App Home	Return to the home screen of your device.
Media	DISC: Browse and play a file stored on a data disc. USB: Browse and play a file stored on a USB storage device. FM radio: Switch to FM radio. Internet radio: Switch to Internet radio. Make sure that your home network has internet access.
Remote	Access the remote control on your mobile device. Swipe the screen to the left or right to access more buttons. Only the relevant buttons are enabled on your mobile device. Some functions such as standby and long press, are not available on the mobile device.
Sound	MySound: Personalize the sound setting to suit your preference. Surround: Select a surround sound setting.

- 4** Follow the onscreen instructions to select an option or complete the set up.

Stream multimedia content (SimplyShare)

Philips SimplyShare allows you to use your smartphone to stream multimedia content (such as pictures, audio and video files), and play through your home theater or any DLNA-compatible device in the same home network.

Before you start

- Install a DLNA-compliant media server application on your mobile device, such as Twonky Media Server.
- Enable media sharing of files. For details, check the user manual of the media server software.

1 On the mobile device, launch the media server application. For iPhone or Android phone, access **MyRemote** application.

2 From the menu of your mobile device, select **SimplyShare**.

- ↳ Your home theater and other devices on the home network are automatically detected and displayed on the screen.

3 Select a device on the network.

- ↳ The folders in the selected device are displayed. Depending on the media server, the folder names may vary.
- If you cannot see the folders, make sure that you enable media sharing on the selected device so that the content is available for sharing.

4 Select a media file to play.

5 From the menu on your mobile device, select the home theater to stream the media file to your home theater:

- Some media files may not display or play due to compatibility issues. For your home theater, check the supported file formats.

6 Use your mobile device to control play.

Internet radio

Access Internet radio through your home theater:

1 Connect your home theater to a home network with Internet access (see 'Connect and set up a home network' on page 15).

2 Press **↑ (Home)**.

- 3 Select [**Internet Radio**], and then press **OK**.
↳ The Internet radio page is displayed.
- 4 Follow the onscreen instructions to select a radio station, create presets, or save your favorite radio stations.
- 5 Press **⬆** (**Home**) to exit the internet radio.

Multiview

You can watch two video sources side by side on some of the Philips TVs. The sources can be:

- video from your home theater;
- TV broadcasts.

For information about how to set up multiview, see your TV user manual.

Browse PC through DLNA

Access and play the pictures, audio and video files from a computer or media server on the home network through your home theater:

Before you start

- Install a DLNA-compliant media server application on your device. Make sure that you download an application that works best for you. For example,
 - Windows Media Player 11 or higher for PC
 - Twonky Media Server for Mac or PC
- Enable media sharing of files. For ease of use, we have included the steps for the following applications:
 - Windows Media Player 11 (see 'Microsoft Windows Media Player 11' on page 25)
 - Windows Media Player 12 (see 'Microsoft Windows Media Player 12' on page 26)
 - Twonky Media for Mac (see 'Macintosh OS X Twonky Media (v4.4.2)' on page 26)

 **Note**

- For additional help on these applications or other media servers, check the user manual of the media server software.

Set up media server software

To enable media sharing, set up the media server software.

Before you start

- Connect your home theater to a home network. For better video quality, use wired connection whenever possible.
- Connect the computer and other DLNA-compatible devices to the same home network.
- Make sure that your PC firewall allows you to run Media Player programs (or the firewall's exemption list has the media server software included).
- Switch on your computer and the router.

Microsoft Windows Media Player 11

- 1 Start Windows Media Player on your PC.
- 2 Click the **Library** tab, and then select **Media Sharing**.
- 3 The first time you select **Media Sharing** on your PC, a pop-up screen appears. Check the **Share my media box** and click **OK**.
↳ The **Media Sharing** screen is displayed.
- 4 In the **Media Sharing** screen, make sure that you see a device marked as **Unknown Device**.
↳ If you don't see an unknown device after a minute or so, check that your PC firewall is not blocking the connection.
- 5 Select the unknown device and click **Allow**.
↳ A green tick appears next to the device.

- 6 By default, Windows Media Player shares from these folders: **My Music**, **My Pictures**, and **My Videos**. If your files are in other folders, select **Library > Add to Library**.
 - ↳ The **Add to Library** screen is displayed.
 - If necessary, select **Advanced options** to display a list of monitored folders.
- 7 Select **My folders and those of others I can access**, and then click **Add**.
- 8 Follow the onscreen instructions to add the other folders that contain your media files.

Microsoft Windows Media Player 12

- 1 Start Windows Media Player on your PC.
- 2 In Windows Media Player, click the **Stream** tab, and then select **Turn on media streaming**.
 - ↳ The **Media streaming options** screen is displayed.
- 3 Click **Turn on media streaming**.
 - ↳ You return to Windows Media Player screen.
- 4 Click the **Stream** tab and select **More streaming options**.
 - ↳ The **Media streaming options** screen is displayed.
- 5 Make sure that you see a media program in the **Local network** screen.
 - ↳ If you don't see a media program, check that your PC firewall is not blocking the connection.
- 6 Select the media program and click **Allowed**.
 - ↳ A green arrow appears next to the media program.
- 7 By default, Windows Media Player shares from these folders: **My Music**, **My Pictures**, and **My Videos**. If your files are in other folders, click the **Organize** tab and select **Manage libraries > Music**.
 - ↳ The **Music Library Locations** screen is displayed.

- 8 Follow the onscreen instructions to add the other folders that contain your media files.

Macintosh OS X Twonky Media (v4.4.2)

- 1 Visit www.twonkymedia.com to purchase the software, or download a free 30-day trial to your Macintosh.
- 2 Start Twonky Media on the Macintosh.
- 3 In the Twonky Media Server screen, select **Basic Setup** and **First Steps**.
 - ↳ The **First steps** screen is displayed.
- 4 Type a name for your media server, and then click **Save changes**.
- 5 Back in the Twonky Media screen, select **Basic Setup** and **Sharing**.
 - ↳ The **Sharing** screen is displayed.
- 6 Browse and select folders to share, and then select **Save Changes**.
 - ↳ Your Macintosh rescans the folders automatically so that they are ready to share.

Play files from your PC

Note

- Before you play multimedia content from the computer, make sure that the home theater is connected to the home network, and the media server software is properly set up.

- 1 Press **⬆** (**Home**).
- 2 Select **[browse PC]**, and then press **OK**.
 - ↳ A content browser is displayed.
- 3 Select a device on the network.
 - ↳ The folders in the selected device are displayed. Depending on the media server, the folder names may vary.
 - If you cannot see the folders, check that you have enabled media sharing on the selected device so that the content is available for sharing.

- 4 Select a file, and then press **OK**.
 - Some media files may not play due to compatibility issues. Check the file formats supported by your home theater.
- 5 Press the play buttons to control play (see 'Play buttons' on page 18).

Choose sound

This section helps you choose the ideal sound for your video or music.

- 1 Press **⏸ SOUND SETTINGS**.
- 2 Press the **Navigation buttons** (left/right) to access the sound options on the display.

Sound options	Description
SOUND	Select a sound mode.
SURROUND	Select surround sound or stereo sound.
AUD SYNC	Delay the audio to match the video.
AUTO VOL	Reduce sudden changes in volume, for example, during TV commercials.

- 3 Select an option, and then press **OK**.
- 4 Press **↶ BACK** to exit.
 - If you do not press a button within a minute, the menu exits automatically.

Surround sound mode

Experience an immersive audio experience with surround sound modes.

- 1 Press **⏸ SOUND SETTINGS**.
- 2 Select **SURROUND**, and then press **OK**.
- 3 Press the **Navigation buttons** (up/down) to select a setting from your display:
 - **AUTO**: Intelligently select the best surround sound mode based on the media played.
 - **360SOUND MOVIE**: 9.1 surround sound mode, best for cinematic experience.

- **360SOUND MUSIC**: 9.1 surround sound mode, best for concert listening experience.
- **360SOUND STEREO**: Enhanced stereo mode with 4.1 channels.
- **STEREO**: Two-channel stereo sound. Ideal for listening to music.

- 4 Press **OK** to confirm.

Sound mode

Select predefined sound modes to suit your video or music.

- 1 Make sure that audio post processing is enabled at the speakers (see 'Speaker settings' on page 30).
- 2 Press **⏸ SOUND SETTINGS**.
- 3 Select **SOUND**, and then press **OK**.
- 4 Press the **Navigation buttons** (up/down) to select a setting on the display:
 - **AUTO**: Automatically select a sound setting based on the sound stream.
 - **BALANCED**: Experience the original sound of your movies and music, without added sound effects.
 - **POWERFUL**: Enjoy thrilling arcade sounds, ideal for action-packed videos and loud parties.
 - **BRIGHT**: Spice up your dull movies and music with added sound effects.
 - **CLEAR**: Hear every detail in your music and clear voices in your movies.
 - **WARM**: Experience spoken words and music vocals in comfort.
 - **PERSONAL**: Personalize the sound based on your preferences.
- 5 Press **OK** to confirm.

Equalizer

Change the high frequency (treble), mid frequency (mid), and low frequency (bass) settings of the home theater:

- 1 Press **⏸ SOUND SETTINGS**.

- 2 Select **SOUND > PERSONAL**, and then press **Navigation buttons** (right).
- 3 Press the **Navigation buttons** (up/down) to change bass, mid or treble frequency.
- 4 Press **OK** to confirm.

Auto volume

Turn on auto volume to reduce sudden changes in volume, for example, during TV commercials.

- 1 Press **⏸ SOUND SETTINGS**.
- 2 Select **AUTO VOL**, and then press **OK**.
- 3 Press the **Navigation buttons** (up/down) to select **ON** or **OFF**.
- 4 Press **OK** to confirm.

6 Change settings

The home theater settings are already configured for optimal performance. Unless you have a reason to change a setting, we recommend that you keep the default setting.

Note

- You cannot change a setting that is grayed out.
- To return to the previous menu, press **↶ BACK**. To exit the menu, press **🏠 (Home)**.

Language settings

- 1 Press **🏠 (Home)**.
- 2 Select **[Setup]**, and then press **OK**.
- 3 Select **[Preference]**, and then press **OK**.
- 4 Press the **Navigation buttons** and **OK** to select and change:
 - **[Menu language]**: Select a display language for menu.
 - **[Audio]**: Select an audio language for discs.
 - **[Keyboard layout]**: Select a keyboard in your language.
 - **[Subtitle]**: Select a subtitle language for discs.
 - **[Disc menu]**: Select a menu language for discs.

Note

- If your preferred disc language is not available, select **[Others]** from the list, and enter the 4-digit language code found at the end of this user manual (see 'Language code' on page 43).
- If you select a language that is not available on a disc, the home theater uses the default language of the disc.

Picture and video settings

- 1 Press **▲** (Home).
- 2 Select **[Setup]**, and then press **OK**.
- 3 Select **[Video]**, and then press **OK**.
- 4 Press the **Navigation buttons** and **OK** to select and change:
 - **[TV display]**: Select a picture format to fit the TV screen.
 - **[HDMI video]**: Select the resolution of video signal that is output from **HDMI OUT (ARC)** on your home theater. To enjoy the selected resolution, make sure that your TV supports the selected resolution.
 - **[HDMI Deep Color]**: Recreate the natural world on your TV screen by displaying vivid images using billion colors. Your home theater must be connected to a Deep Color enabled TV through an HDMI cable.
 - **[Picture settings]**: Select pre defined color settings for the video display. Select **[User]** to create your own setting.
 - **[Watch 3D video]**: Set HDMI video to support 3D or 2D video.

Note

- If you change a setting, make sure that the TV supports the new setting.

Audio settings

- 1 Press **▲** (Home).
- 2 Select **[Setup]**, and then press **OK**.
- 3 Select **[Audio]**, and then press **OK**.

- 4 Press the **Navigation buttons** and **OK** to select and change:
 - **[Night mode]**: For quiet listening, decrease the volume of loud sounds on your home theater. Night mode is only available in DVDs and Blu-ray discs with Dolby Digital, Dolby Digital Plus, and Dolby True HD soundtracks.
 - **[HDMI Audio]**: Set the HDMI audio output from your TV, or disable HDMI audio output from the TV.
 - **[Audio sync]**: Set audio delay if audio and video cannot be matched.
 - **[Auto speaker setup (recommended)]**: Automatically set up speakers for best surround sound experience.

Parental control settings

- 1 Press **▲** (Home).
- 2 Select **[Setup]**, and then press **OK**.
- 3 Select **[Preference]**, and then press **OK**.
- 4 Press the **Navigation buttons** and **OK** to select and change:
 - **[Change Password]**: Set or change your password for parental control access. If you do not have a password or have forgotten your password, enter **0000**.
 - **[Parental control]**: Restrict access to discs that are recorded with age ratings. To play all discs, irrespective of the ratings, select **8** or **[Off]**.

Display settings

- 1 Press **▲** (Home).
- 2 Select **[Setup]**, and then press **OK**.
- 3 Select **[Preference]**, and then press **OK**.
- 4 Press the **Navigation buttons** and **OK** to select and change:
 - **[Auto subtitle shift]**: Enable or disable automatic repositioning of subtitles on TVs that support this feature.

- **[Display panel]:** Set the brightness of the home theater front panel display.
- **[VCD PBC]:** Enable or disable the content menu navigation of VCD and SVCD discs with Play Back Control feature.



Tip

- Enable audio post processing before you select a predefined sound mode (see 'Sound mode' on page 27).

Energy saving settings

- 1 Press **▲** (Home).
- 2 Select **[Setup]**, and then press **OK**.
- 3 Select **[Preference]**, and then press **OK**.
- 4 Press the **Navigation buttons** and **OK** to select and change:
 - **[Screen saver]:** Switch the home theater to screen saver mode after 10 minutes of inactivity.
 - **[Auto standby]:** Switch the home theater to standby after 30 minutes of inactivity. This timer works only when a disc or USB play is paused or stopped.
 - **[Sleep timer]:** Set the duration of the sleep timer so that the home theater is switched to standby after the specified period.

Restore default settings

- 1 Press **▲** (Home).
- 2 Select **[Setup]**, and then press **OK**.
- 3 Select **[Advanced]** > **[Restore default settings]**, and then press **OK**.
- 4 Select **[OK]**, and then press **OK** to confirm.
 - ↳ Your home theater is reset to its default settings except for some settings such as parental control and DivX/VOD registration code.

Speaker settings

- 1 Press **▲** (Home).
- 2 Select **[Setup]**, and then press **OK**.
- 3 Select **[Advanced]**, and then press **OK**.
- 4 Press the **Navigation buttons** and **OK** to select and change:
 - **[Enhanced audio]:** Select **[On]** to enable audio post processing at the speaker and enable karaoke settings (if your product supports Karaoke). To play the original audio of the disc, select **[Off]**.

7 Update software

Philips continually tries to improve its products. To get the best features and support, update your home theater with the latest software.

Compare the version of your current software with the latest version on www.philips.com/support. If the current version is lower than the latest version available on the Philips support website, upgrade your home theater with the latest software.

Caution

- Do not install a lower version of software than the current version installed on your product. Philips is not liable for problems caused due to software downgrade.

Check software version

Check the version of the current software installed on your home theater:

- 1 Press **⬆** (Home).
- 2 Select **[Setup]**, and then press **OK**.
- 3 Select **[Advanced]** > **[Version information]**.
 - ↳ The software version is displayed.
 - 'System SW' displayed indicates the overall software version. 'Subsystem SW' indicates the version of different features. For example, if 'Subsystem SW' is '35-00-00-05', the last two digits ('05') indicate the current version of the onscreen help installed on your home theater.

Update software through USB

What you need

- A USB flash drive that is FAT or NTFS-formatted, with at least 256MB of memory. Do not use a USB hard drive.
- A computer with Internet access.
- An archive utility that supports the ZIP file format.

Step 1: Download the latest software

- 1 Connect a USB flash drive to your computer.
- 2 In your web browser, go to www.philips.com/support.
- 3 At the Philips Support website, find your product and locate the **Software and drivers**.
 - ↳ The software update is available as a zip file.
- 4 Save the zip file in the root directory of your USB flash drive.
- 5 Use the archive utility to extract the software update file in the root directory.
 - ↳ The files are extracted under the **UPG** folder of your USB flash drive.
- 6 Disconnect the USB flash drive from your computer.

Step 2: Update the software

Caution

- Do not switch off the home theater or remove the USB flash drive during the update.

- 1 Connect the USB flash drive containing the downloaded file to your home theater.
 - Make sure that the disc compartment is closed and no disc inside.
- 2 Press **⬆** (Home).

- 3 Select **[Setup]**, and then press **OK**.
- 4 Select **[Advanced]** > **[Software update]** > **[USB]**.
- 5 Follow the onscreen instructions to confirm the update.
 - ↳ Update process takes about 5 minutes to complete.
 - ↳ Once complete, the home theater automatically switches off and restarts. If it does not, disconnect the power cord for a few seconds and then reconnect it.

Update software through the Internet

- 1 Connect your home theater to a home network with a high-speed Internet access (see 'Connect and set up a home network' on page 15).
- 2 Press **⬆** (**Home**).
- 3 Select **[Setup]**, and then press **OK**.
- 4 Select **[Advanced]** > **[Software update]** > **[Network]**.
 - ↳ If an upgrade media is detected, you are prompted to start or cancel the update.
 - ↳ Downloading of the upgrading file may take long, depending on your home network condition.
- 5 Follow the onscreen instructions to confirm the update.
 - ↳ Update process takes about 5 minutes to complete.
 - ↳ Once complete, the home theater automatically switches off and restarts. If it does not, disconnect the power cord for a few seconds and then reconnect it.

Update the onscreen help

If the current version of the onscreen help is lower than the latest version available on www.philips.com/support, download and install the latest onscreen help (see 'Check software version' on page 31).

What you need

- A USB flash drive that is FAT or NTFS-formatted, with at least 35MB of memory. Do not use a USB hard drive.
- A computer with internet access.
- An archive utility that supports the ZIP file format.

Step 1: Download the latest onscreen help

- 1 Connect a USB flash drive to your computer.
- 2 In your web browser, go to www.philips.com/support.
- 3 At the Philips support website, find your product and click on **User manuals**, and then locate the **User Manual Upgrade Software**.
 - ↳ The help update is available as a zip file.
- 4 Save the zip file in the root directory of your USB flash drive.
- 5 Use the archive utility to extract the help update file in the root directory.
 - ↳ A file named 'HTBxxxxeDFU.zip' is extracted under the **UPG** folder of your USB flash drive, 'xxxx' being the model number of your home theater.
- 6 Disconnect the USB flash drive from your computer.

Step 2: Update onscreen help

! Caution

- Do not switch off the home theater or remove the USB flash drive during the update.

- 1 Connect the USB flash drive containing the downloaded file to your home theater:
 - Make sure that the disc compartment is closed and there is no disc inside.
- 2 Press **⬆** (Home).
- 3 Enter **338** on the remote control.
- 4 Follow the onscreen instructions to confirm the update.
- 5 Disconnect the USB flash drive from the home theater.

8 Product specifications

☰ Note

- Specifications and design are subject to change without notice.

Region codes

The type plate on the back or bottom of the home theater shows which regions it supports.

Country	DVD	BD
Europe, United Kingdom		
Asia Pacific, Taiwan, Korea		
Latin America		
Australia, New Zealand		
Russia, India		
China		

Media formats

- AVCHD, BD, BD-R/ BD-RE, BD-Video, DVD-Video, DVD+R/RW, DVD-R/RW, DVD+R/R DL, CD-R/CD-RW, Audio CD, Video CD/SVCD, Picture files, MP3 media, WMA media, DivX Plus HD media, USB storage device

File formats

- Audio:
 - .aac, .mka, .mp3, .wma, .wav, .mp4, .m4a, .flac, .ogg
 - .ra (Available only in Asia Pacific and China)
- Video:
 - .avi, .divx, .mp4, .m4v, .mkv, .m2ts, .mpg, .mpeg, .flv, .3gp
 - .asf, .wmv, .rmvb, .rm, .rv (Available only in Asia Pacific and China)
- Picture: .jpg, .jpeg, .png

Audio formats

Your home theater supports the following audio files.

Extension	Con-tainer	Audio codec	Bit rate
.mp3	MP3	MP3	Upto 320 kbps
.wma	ASF	WMA WMA Pro	Upto 192 kbps Upto 768 kbps
.aac	AAC	AAC, HE-AAC	Upto 192 kbps
.wav	WAV	PCM	27.648 Mbps
.m4a	MKV	AAC	192 kbps
.mka	MKA	PCM Dolby Digital DTS core MPEG MP3 WMA WMA Pro AAC, HE-AAC	27.648 Mbps 640 kbps 1.54 Mbps 912 kbps Upto 320 kbps Upto 192 kbps Upto 768 kbps Upto 192 kbps
.ra	RM	AAC, HE-AAC Cook	Upto 192 kbps 96469 bps
.flac	FLAC	FLAC	Upto 24 bps
.ogg	OGG	Vorbis	Variable bit rate, maximum block size 4096

Extension	Con-tainer	Audio codec	Bit rate
		FLAC	Upto 24 bps
		OGGPCM	No limit
		MP3	Upto 320 kbps

Video formats

If you have a high definition TV, your home theater allows you to play your:

- video files with a resolution of 1920 × 1080 pixels (except DivX, which has a resolution of 77220 × 576) and frame rate of 6 ~ 30 frames per second.
- photo files with a resolution of 18 M pixels.

.avi files in AVI container

Audio codec	Video codec	Bit rate
PCM, Dolby Digital, DTS core, MP3, WMA	DivX 3.11, DivX 4.x, DivX 5.x, DivX 6.x	10 Mbps max
	MPEG 1, MPEG 2	40 Mbps
	MPEG 4 SP / ASP	38.4 Mbps
	H.264/AVC upto HiP@5.1	25 Mbps
	WMV9	45 Mbps

.divx files in AVI container

Audio codec	Video codec	Bit rate
PCM, Dolby Digital, MP3, WMA	DivX 3.11, DivX 4.x, DivX 5.x, DivX 6.x	10 Mbps max

.mp4 or .m4v files in MP4 container

Audio codec	Video codec	Bit rate
Dolby Digital, MPEG, MP3, AAC, HE-AAC, DD+	MPEG 1, MPEG 2	40 Mbps
	MPEG 4 ASP	38.4 Mbps

Audio codec	Video codec	Bit rate
	H.264/AVC HiP@5.1	25 Mbps

.mkv files in MKV container

Audio codec	Video codec	Bit rate
PCM, Dolby Digital, DTS core, MPEG, MP3, WMA, AAC, HE-AAC, DD+	DivX Plus HD	30 Mbps
	MPEG 1, MPEG 2	40 Mbps
	MPEG 4 ASP	38.4 Mbps
	H.264/AVC HiP@5.1	25 Mbps
	WMV9	45 Mbps

.m2ts files in MKV container

Audio codec	Video codec	Bit rate
PCM, Dolby Digital, DTS core, MPEG, MP3, WMA, AAC, HE-AAC, DD+	MPEG 1, MPEG 2	40 Mbps
	MPEG 4 ASP	38.4 Mbps
	H.264/AVC HiP@5.1	25 Mbps
	WMV9	45 Mbps

.asf and .wmv files in ASF container (Available only in Asia Pacific and China)

Audio codec	Video codec	Bit rate
Dolby Digital, MP3, WMA, DD+	MPEG 4 ASP	38.4 Mbps
	H.264/AVC HiP@5.1	25 Mbps
	WMV9	45 Mbps

.mpg and .mpeg files in PS container

Audio codec	Video codec	Bit rate
PCM, DTS core, MPEG, MP3	MPEG 1, MPEG 2	40 Mbps

.flv files in FLV container

Audio codec	Video codec	Bit rate
MP3, AAC	H.264/AVC upto HiP@5.1	25 Mbps
	H.263	38.4 Mbps
	On2 VP6	40 Mbps

.3gp files in 3GP container

Audio codec	Video codec	Bit rate
AAC, HE-AAC	MPEG 4 ASP	38.4 Mbps
	H.264/AVC upto HiP@5.1	25 Mbps max

.rm, .rv, and .rmvb files in RM container (Available only in Asia Pacific and China)

Audio codec	Video codec	Bit rate
AAC, COOK	RV30, RV40	40 Mbps

Amplifier

- Total output power: 1000W RMS (+/- 0.5 dB, 30% THD) / 800W RMS (+/- 0.5 dB, 10% THD)
- Frequency response: 20 Hz-20 kHz / ± 3 dB
- Signal-to-noise ratio: > 65 dB (CCIR) / (A-weighted)
- Input sensitivity:
 - AUX: 650 mV
 - Music iLink: 300 mV

Video

- Signal system: PAL / NTSC
- HDMI output: 480i/576i, 480p/576p, 720p, 1080i, 1080p, 1080p24, Quad-HD (4Kx2K)

Audio

- S/PDIF Digital audio input:
 - Coaxial: IEC 60958-3
 - Optical: TOSLINK
- Sampling frequency:
 - MP3: 32 kHz, 44.1 kHz, 48 kHz
 - WMA: 44.1 kHz, 48 kHz
- Constant bit rate:
 - MP3: 32 kbps - 320 kbps
 - WMA: 48 kbps - 192 kbps

Radio

- Tuning range:
 - Europe/Russia/China: FM 87.5-108 MHz (50 kHz)
 - Asia Pacific/Latin America: FM 87.5-108 MHz (50/100 kHz)
- Signal-to-noise ratio: FM 50 dB
- Frequency response: FM 180 Hz-12.5 kHz / ± 3 dB

USB

- Compatibility: Hi-Speed USB (2.0)
- Class support: USB Mass Storage Class (MSC)
- File system: FAT16, FAT32, NTFS

Main unit

- Dimensions (WxHxD): 437 x 75 x 342 mm
- Weight: 3.6 kg

Subwoofer

- Power supply:
 - Europe/China: 220-240 V~, 50 Hz
 - Latin America/Asia Pacific: 110-127 V/220-240 V~, 50-60 Hz
 - Russia/India: 220-240 V~, 50 Hz
- Power consumption: 105 W
- Standby power consumption: ≤ 0.5 W
- Impedance: 4 ohm
- Speaker drivers: 1 x 6.5" woofer
- Dimensions (WxHxD): 295 x 395 x 295 mm
- Weight: 7.8 kg

Speakers

Center speaker:

- Speaker impedance: 4 ohm
- Speaker drivers: 2 x 2.5" woofer + 1 x 1" tweeter
- Dimensions (WxHxD): 435 x 85 x 111 mm
- Weight: 1.8 kg

Front / rear speakers:

- Speaker impedance: 6 ohm
- Speaker drivers: 3 x 2.5" woofer + 1 x 1" tweeter
- Dimensions (WxHxD): 99 x 247 x 117 mm
- Weight: 1.5 kg

To purchase accessories for this home theater, go to your Philips dealer or a Philips service center. If you have any difficulties obtaining accessories for your appliance, please contact the Philips Consumer Care Center in your country. You will find the contact details at www.philips.com/support.

Accessory	Service Code
Rear speaker extension cable	CRP898/01

Remote control batteries

- 2 x AAA-R03-1.5 V

Laser

- Laser Type (Diode): InGaN/AlGaIn (BD), AlGaInP (DVD/CD)
- Wave length: 405 +7 nm/-7 nm (BD), 655 +10 nm/-10 nm (DVD), 790 +10 nm/-20 nm (CD)
- Output power (Max. ratings): 20 mW (BD), 6 mW (DVD), 7 mW (CD)

9 Troubleshooting



Warning

- Risk of electric shock. Never remove the casing of the product.

To keep the warranty valid, never try to repair the product yourself.

If you have problems using this product, check the following points before you request service.

If you still have a problem, get support at www.philips.com/support.

Main unit

The buttons on the home theater do not work.


- Disconnect the home theater from the power supply for a few minutes, then reconnect.
- Make sure that the touch buttons surface is not in contact with any conductive material, like water drop, metal, etc.

Picture

No picture.

- Make sure that the TV is switched to the correct source for the home theater.

No picture on a TV connected through HDMI.

- Make sure that you use a High Speed HDMI cable to connect the home theater and TV. Some Standard HDMI cables do not display properly for some images, 3D video, or Deep Color.
- Make sure that the HDMI cable is not faulty. If it is faulty, replace it with a new cable.
- Press  (Home) and then **731** on the remote control to restore the default picture resolution.
- Change the HDMI video setting, or wait for 10 seconds for auto recovery (see 'Picture and video settings' on page 29).

Disc does not play high-definition video.

- Make sure that the disc contains high-definition video.
- Make sure that the TV supports high-definition video.
- Use an HDMI cable to connect to the TV.

Sound

No sound from home theater speakers.

- Connect the audio cable from your home theater to your TV or other devices. However, you do not need a separate audio connection when:
 - the home theater and TV are connected through an **HDMI ARC** connection, or
 - a device is connected to the **HDMI IN** connector on your home theater.
- Set up the audio for the connected device (see 'Set up the audio' on page 15).
- Reset your home theater to its factory settings (see 'Restore default settings' on page 30), and then switch it off and switch on again.
- On your home theater, press **SOURCE** repeatedly to select the correct audio input.

Distorted sound or echo.

- If you play audio from the TV through the home theater, make sure that the TV is muted.

Audio and video are not synchronized.

- 1) Press **≡ SOUND SETTINGS**.
- 2) Press the **Navigation buttons** (left/right) to select **AUD SYNC**, and then press **OK**.
- 3) Press the **Navigation buttons** (up/down) to synchronize the audio with the video.

Cannot calibrate the speakers with the calibration microphone.

- Make sure that the speakers, subwoofer, and calibration microphone are connected as described in the Quick start guide.

- Move the speakers to a different position, and then calibrate again.
- Follow all the steps for auto calibration (see 'Automatic calibration' on page 13).
- If you cannot calibrate the speakers automatically, or you are not happy with the automatic settings, calibrate the speakers manually (see 'Manual setup' on page 14).

Play

Cannot play a disc.

- Clean the disc.
- Make sure that the home theater supports the type of disc (see 'Media formats' on page 33).
- Make sure that the home theater supports the region code of the disc (see 'Region codes' on page 33).
- If the disc is a DVD±RW or DVD±R disc, make sure that it is finalized.

Cannot play a DivX file.

- Make sure that the DivX file is encoded according to the 'Home Theater Profile' with the DivX encoder.
- Make sure that the DivX file is complete.

DivX or RMVB/RM subtitles do not display correctly.

- Make sure that the subtitle file name is the same as the movie file name (see 'Subtitles' on page 20).
- Select the correct character set:
 - 1) Press **OPTIONS**.
 - 2) Select **[Character set]**.
 - 3) Select the supported character set.
 - 4) Press **OK**.

Cannot read the contents of a USB storage device.

- Make sure that the format of the USB storage device is compatible with the home theater.
- Make sure that the file system on the USB storage device is supported by the home theater.

'No entry' or 'x' sign appears on the TV.

- The operation is not possible.

EasyLink does not work.

- Make sure that the home theater is connected to a Philips brand EasyLink TV, and the EasyLink option is turned on (see 'Set up EasyLink (HDMI-CEC control)' on page 14).
- For TVs from different manufacturers, the HDMI CEC could be called differently. Check the TV user manual on how to enable it.

When you switch on the TV, the home theater automatically switches on.

- This behavior is normal when you are using Philips EasyLink (HDMI-CEC). To make the home theater work independently, switch off EasyLink.

Cannot access BD-Live features.

- Make sure that the home theater is connected to the network. Use a wired network connection (see 'Set up the wired network' on page 16), or wireless network connection (see 'Set up the wireless network' on page 16).
- Make sure that the network is set up. Use a wired network installation (see 'Set up the wired network' on page 16), or wireless network installation (see 'Set up the wireless network' on page 16).
- Make sure that the Blu-ray disc supports BD-Live features.
- Clear memory storage (see 'BD-Live on Blu-ray' on page 19).

My 3D video played in 2D mode.

- Make sure that your home theater is connected to a 3D TV through an HDMI cable.
- Make sure that the disc is a Blu-ray 3D disc, and the Blu-ray 3D video option is on (see 'BD-Live on Blu-ray' on page 19).

TV screen is black when you play a Blu-ray 3D video or a DivX copy protected video.

- Make sure that the home theater is connected to the TV through an HDMI cable.
- Switch to the correct HDMI source on the TV.

Network

Wireless network distorted or not found.

- Make sure that the wireless network is not disturbed by microwave ovens, DECT phones, or other neighboring Wi-Fi devices.
- Place the wireless router and the home theater within five meters of each other.
- If the wireless network does not work properly, try a wired network installation (see 'Set up the wired network' on page 16).

10 Notice

This section contains the legal and trademark notices.

Copyright



**Be responsible
Respect copyrights**

This item incorporates copy protection technology that is protected by U.S. patents and other intellectual property rights of Rovi Corporation. Reverse engineering and disassembly are prohibited.

This product incorporates proprietary technology under license from Verance Corporation and is protected by U.S. Patent 7,369,677 and other U.S. and worldwide patents issued and pending as well as copyright and trade secret protection for certain aspects of such technology. Cinavia is a trademark of Verance Corporation. Copyright 2004-2010 Verance Corporation. All rights reserved by Verance. Reverse engineering or disassembly is prohibited.

Cinavia notice

This product uses Cinavia technology to limit the use of unauthorized copies of some commercially-produced film and videos and their soundtracks. When a prohibited use of an unauthorized copy is detected, a message will be displayed and playback or copying will be interrupted.

More information about Cinavia technology is provided at the Cinavia Online Consumer Information Center at <http://www.cinavia.com>. To request additional information about Cinavia by mail, send a postcard with your mailing address to: Cinavia Consumer Information Center, P.O. Box 86851, San Diego, CA, 92138, USA.

Open source software

Philips Electronics Singapore Pte Ltd hereby offers to deliver, upon request, a copy of the complete corresponding source code for the copyrighted open source software packages used in this product for which such offer is requested by the respective licenses. This offer is valid up to three years after product purchase to anyone in receipt of this information. To obtain source code, please contact open.source@philips.com. If you prefer not to use email or if you do not receive confirmation receipt within a week after mailing to this email address, please write to "Open Source Team, Philips Intellectual Property & Standards, P.O. Box 220, 5600 AE Eindhoven, The Netherlands". If you do not receive timely confirmation of your letter, please email to the email address above. The texts of the licenses and acknowledgements for open source software used in this product are included in the user manual.

RMVB end user agreement (Asia Pacific and China only)

Notes to End User:

By using this product with RealNetworks software and services, the end user agrees to the following terms of REALNETWORKS, INC.:

- End User may only use the software for private, non-commercial use in accordance with the terms of RealNetworks EULA .
- End User is not allowed to modify, translate, reverse engineer, decompile, disassemble or use other means to discover the source code or otherwise replicate the functionality of the Real Format Client Code, except to the extent that this restriction is expressly prohibited by applicable law.

- RealNetworks Inc. disclaims all warranties and conditions other than those set forth in this Agreement which are in lieu of all other warranties, whether express and implied, including but not limited to any implied warranties or conditions of merchantability and fitness for a particular purpose; and effectively exclude all liability for indirect, special, incidental and consequential damages, such as but not limited to lost profits.



BONUSVIEW™

'BD LIVE' and 'BONUSVIEW' are trademarks of Blu-ray Disc Association.



'DVD Video' is a trademark of DVD Format/ Logo Licensing Corporation.



Java and all other Java trademarks and logos are trademarks or registered trademarks of Sun Microsystems, Inc. in the United States and/or other countries.



Manufactured under license under U.S. Patent Nos: 5,956,674; 5,974,380; 6,226,616; 6,487,535; 7,392,195; 7,272,567; 7,333,929; 7,212,872 & other U.S. and worldwide patents issued & pending. DTS-HD, the Symbol, & DTS-HD and the Symbol together are registered trademarks & DTS-HD Master Audio | Essential is a trademark of DTS, Inc. Product includes software. © DTS, Inc. All Rights Reserved.

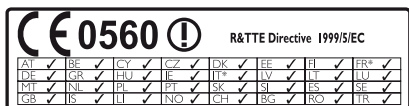


Manufactured under license from Dolby Laboratories. Dolby, Pro Logic, and the double-D symbol are trademarks of Dolby Laboratories.

Compliance



This product complies with the radio interference requirements of the European Community.



* Wireless and Ethernet LAN functions are authorized for indoor use only. Hereby, Philips Consumer Lifestyle, declares that this product is in compliance with the essential requirements and other relevant provisions of Directive 1999/5/EC. A copy of the EC declaration of Conformity is available in the Portable Document Format (PDF) version of the user manual at www.philips.com/support.

Trademarks



"Blu-ray 3D" and "Blu-ray 3D" logo are trademarks of Blu-ray Disc Association.



DivX[®], DivX Certified[®], DivX Plus[®] HD and associated logos are trademarks of Rovi Corporation or its subsidiaries and are used under license.

ABOUT DIVX VIDEO: DivX[®] is a digital video format created by DivX, LLC, a subsidiary of Rovi Corporation. This is an official DivX Certified[®] device that plays DivX video. Visit divx.com for more information and software tools to convert your files into DivX videos.

ABOUT DIVX VIDEO-ON-DEMAND: This DivX Certified[®] device must be registered in order to play purchased DivX Video-on-Demand (VOD) movies. To obtain your registration code, locate the DivX VOD section in your device setup menu. Go to vod.divx.com for more information on how to complete your registration.



The terms HDMI and HDMI High-Definition Multimedia Interface, and the HDMI Logo are trademarks or registered trademarks of HDMI Licensing LLC in the United States and other countries.



(Available only in Asia Pacific and China)
RealNetworks, Real, the Real logo, RealPlayer, and the RealPlayer logo are trademarks or registered trademarks of RealNetworks, Inc.



11 Language code

Abkhazian	6566	Inupiaq	7375	Pushto	8083
Afar	6565	Irish	7165	Russian	8285
Afrikaans	6570	Íslenska	7383	Quechua	8185
Amharic	6577	Italiano	7384	Raeto-Romance	8277
Arabic	6582	Ivrit	7269	Romanian	8279
Armenian	7289	Japanese	7465	Rundi	8278
Assamese	6583	Javanese	7486	Samoan	8377
Avestan	6569	Kalaallisut	7576	Sango	8371
Aymara	6589	Kannada	7578	Sanskrit	8365
Azerhijani	6590	Kashmiri	7583	Sardinian	8367
Bahasa Melayu	7783	Kazakh	7575	Serbian	8382
Bashkir	6665	Kernewek	7587	Shona	8378
Belarusian	6669	Khmer	7577	Shqip	8381
Bengali	6678	Kinyarwanda	8287	Sindhi	8368
Bihari	6672	Kirghiz	7589	Sinhalese	8373
Bislama	6673	Komi	7586	Slovensky	8373
Bokmål, Norwegian	7866	Korean	7579	Slovenian	8376
Bosanski	6683	Kuanyama; Kwanyama	7574	Somali	8379
Brezhoneg	6682	Kurdish	7585	Sotho; Southern	8384
Bulgarian	6671	Lao	7679	South Ndebele	7882
Burmese	7789	Latina	7665	Sundanese	8385
Castellano, Español	6983	Latvian	7686	Suomi	7073
Catalán	6765	Letzeburgesch;	7666	Swahili	8387
Chamorro	6772	Limburgan; Limburger	7673	Swati	8383
Chechen	6769	Lingala	7678	Svenska	8386
Chewa; Chichewa; Nyanja	7889	Lithuanian	7684	Tagalog	8476
中文	9072	Luxembourgish;	7666	Tahitian	8489
Chuang; Zhuang	9065	Macedonian	7775	Tajik	8471
Church Slavic; Slavonic	6785	Malagasy	7771	Tamil	8465
Chuvash	6786	Magyar	7285	Tatar	8484
Corsican	6779	Malayalam	7776	Telugu	8469
Česky	6783	Maltese	7784	Thai	8472
Dansk	6865	Manx	7186	Tibetan	6679
Deutsch	6869	Maori	7773	Tigrinya	8473
Dzongkha	6890	Marathi	7782	Tonga (Tonga Islands)	8479
English	6978	Marshallese	7772	Tsonga	8483
Esperanto	6979	Moldavian	7779	Tswana	8478
Estonian	6984	Mongolian	7778	Türkçe	8482
Euskara	6985	Nauru	7865	Türkmen	8475
Ελληνικά	6976	Navaho; Navajo	7886	Twí	8487
Faroese	7079	Ndebele, North	7868	Uighur	8571
Français	7082	Ndebele, South	7882	Ukrainian	8575
Frysk	7089	Ndonga	7871	Urdu	8582
Fijian	7074	Nederlands	7876	Uzbek	8590
Gaelic; Scottish Gaelic	7168	Nepali	7869	Vietnamese	8673
Gallegan	7176	Norsk	7879	Volapuk	8679
Georgian	7565	Northern Sami	8369	Walloon	8765
Gikuyu; Kikuyu	7573	North Ndebele	7868	Welsh	6789
Guarani	7178	Norwegian Nynorsk;	7878	Wolof	8779
Gujarati	7185	Occitan; Provençal	7967	Xhosa	8872
Hausa	7265	Old Bulgarian; Old Slavonic	6785	Yiddish	8973
Herero	7290	Oriya	7982	Yoruba	8979
Hindi	7273	Oromo	7977	Zulu	9085
Hiri Motu	7279	Ossetian; Ossetic	7983		
Hrwatski	6779	Pali	8073		
Ido	7379	Panjabi	8065		
Interlingua (International)	7365	Persian	7065		
Interlingue	7365	Polski	8076		
Inuktitut	7385	Português	8084		

12 Index

2

2nd audio language	19
2nd subtitle language	19

3

3D disc in 2D mode	18
3D safety	4
3D video	18

5

5.1 speakers	9
--------------	---

A

advanced settings	30
amplifier	35
audio connection (analog cable)	13
audio connection (HDMI ARC)	11
audio formats	34
audio from other devices	12
audio language	28
audio options	21
audio post processing	30
audio settings	29
auto standby	30
auto subtitle shift	29
auto volume	28

B

batteries	36
BD-Live	19
Blu-ray	18
Bonus View	19
brightness	29

C

change password	29
character set	20
clear BD-Live memory	19

connect a digital device (HDMI)	12
connect to TV	11
connectors	7
control buttons (disc)	18
control buttons (radio)	22
control buttons (USB)	18
customer support	2

D

data files	19
deep color	29
default settings	30
device name	17
disc language	28
disc menu	28
display panel	29
disposal	4
DivX	19

E

Easylink (HDMI-CEC)	14
eject disc	7
enhanced audio	30
environment	4

F

factory settings	30
FAQs	2
file formats	34

H

HDMI ARC	11
HDMI audio	29
HDMI-CEC	14
home menu	17
home network	15

I

internet	15
----------	----

L

language code	43
---------------	----

<hr/>	
M	
main unit	7
manual setup	13
media formats	33
media sharing	25
menu language	28
musical slideshows	22
<hr/>	
N	
network	15
night mode	29
<hr/>	
O	
one-touch play	15
one-touch standby	15
options	21
<hr/>	
P	
parental control	29
PBC (play back control)	29
picture options	22
picture resolution	29
picture settings	29
picture-in-picture	19
play disc	18
play from PC	26
play USB storage device	20
power settings	30
predefined sound mode	27
preference	28
<hr/>	
R	
recycling	4
region codes	33
remote control	5
repeat	21
<hr/>	
S	
shuffle	21
sleep timer	30
slide animation	22
<hr/>	
software update	31
software version	31
sound	27
speaker position	9
speaker setup	13
speaker specifications	33
subtitle language	28
subtitle position	29
surround sound	27
synchronize picture and sound	18
<hr/>	
T	
troubleshooting (network)	39
troubleshooting (picture)	37
troubleshooting (play)	38
troubleshooting (sound)	38
tuning grid	23
<hr/>	
U	
update onscreen help (user manual)	32
update software (through Internet)	32
USB storage device	20
user manual	2
<hr/>	
V	
VCD	29
video connection (composite video)	12
video connection (HDMI ARC)	11
video connection (standard HDMI)	11
video formats	36
video options	21
video settings	29
VOD code (DivX)	20
<hr/>	
W	
watch 3D	18
wired network	16
wireless network	16
wireless rear audio	10
wireless speakers	10



Specifications are subject to change without notice
© 2016 Koninklijke Philips N.V. All rights reserved.
Trademarks are the property of Koninklijke Philips N.V. or their respective owners.

HTB9550D_98_UM_e7

