

Always there to help you

Register your product and get support at
www.philips.com/support

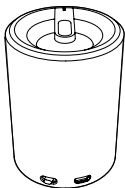


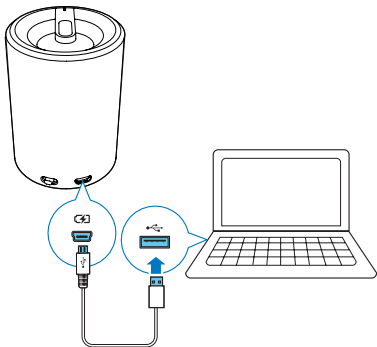
SBA3005P



User manual

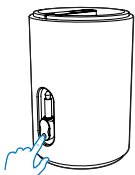
PHILIPS



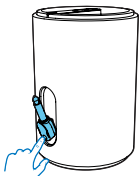




1



2

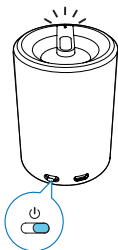


3

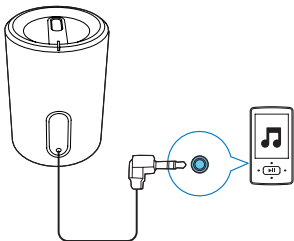


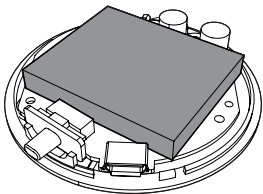


1



2





1 Important

Safety

Important Safety Instructions

- Heed all warnings.
- Follow all instructions.
- Do not use this apparatus near water.
- Do not block any ventilation openings. Install in accordance with the manufacturer's instructions.
- Do not install near any heat sources such as radiators, heat registers, stoves, or other devices (including amplifiers) that produce heat.
- Only use attachments/accessories specified by the manufacturer.
- Refer all servicing to qualified service personnel. Servicing is required when the device has been damaged in any way, such as power-supply cord or plug is damaged, liquid has been spilled or objects have fallen into the device, the device has been exposed to rain or moisture, does not operate normally, or has been dropped.
- The battery shall not be exposed to excessive heat such as sunshine, fire, or the like.
- Devices shall not be exposed to dripping or splashing.
- Do not place any sources of danger on the device (e.g. liquid filled objects, lighted candles).



Warning

- Never remove the casing of this apparatus.
- Never place this apparatus on other electrical equipment.

Notice

Any changes or modifications made to this device that are not expressly approved by WOOX Innovations may void the user's authority to operate the equipment.

This product complies with the radio interference requirements of the European Community.



Disposal of your old product and battery

Your product is designed and manufactured with high quality materials and components, which can be recycled and reused



This symbol on a product means that the product is covered by European Directive 2012/19/EU.

This symbol means that the product contains a built-in rechargeable battery covered by European Directive 2013/56/EU which cannot be disposed of with normal household waste. We strongly advise you to take your product to an official collection point or a Philips service centre to have a professional remove the rechargeable battery.



Inform yourself about the local separate collection system for electrical and electronic products and rechargeable batteries. Follow local rules and never dispose of the product and rechargeable batteries with normal household waste. Correct disposal of old products and rechargeable batteries helps prevent negative consequences for the environment and human health.

Always bring your product to a professional to remove the built-in battery.



Environmental information

All unnecessary packaging has been omitted. We have tried to make the packaging easy to separate into three materials: cardboard (box), polystyrene foam (buffer) and polyethylene (bags, protective foam sheet.)

Your system consists of materials which can be recycled and reused if disassembled by a specialized company. Please observe the local regulations regarding the disposal of packaging materials, exhausted batteries and old equipment.

2 Get started

Always follow the instructions in this chapter in sequence. If you contact Philips, you will be asked for the model and serial number of this apparatus. The model number and serial number are on the bottom of the apparatus. Write the numbers here:

Model No. _____

Serial No. _____

Power supply

The speaker can operate on built-in rechargeable battery.

To recharge the built-in battery: (🔌)

Connect your speaker with PC through supplied USB cable.

↳ The power indicator turns on.

- The power indicator turns off when it's fully charged.

Play

1 Pull the audio input plug out of the speaker. (⚙️)

2 Slide the switch to turn the speaker on.

↳ The LED lights up.

3 Connect the speaker to your device with the audio input plug. (🎵)

4 Adjust the volume and navigate your audio content on your device.

5 After use, disconnect your device from the speaker and slide the switch to turn the speaker off.

3 Product information

Specifications

General information

Rated Output Power	2W RMS
DC power input	USB 5V 500mA
Built-in Li-Polymer battery	3.7V 500mAh
Battery working time	>8 hours
Dimensions-Main Unit(diameter x height)	D56mm * H80mm
Weight- Main Unit	0.2 kg

4 Troubleshooting

To keep the warranty valid, never try to repair the system yourself. If you encounter problems when using this apparatus, check the following points before requesting service. If the problem remains unsolved, go to the Philips web site (www.philips.com/support). When you contact Philips, ensure that the apparatus is nearby and the model number and serial number are available.

No power: Recharge your speaker.

No sound: Adjust volume on your device.

No response from the speaker: Restart the speaker.



Specifications are subject to change without notice.
2015 © WOOX Innovations Limited. All rights reserved.
Philips and the Philips' Shield Emblem are registered
trademarks of Koninklijke Philips N.V. and are used
by WOOX Innovations Limited under license from
Koninklijke Philips N.V.

