

Always there to help you

Register your product and get support at

www.philips.com/support

PD7001B

Question?
Contact
Philips



User manual

PHILIPS

Contents

1	Important	2
	Safety and notice	2
	Safety	2
	Mains fuse (UK only)	4
	Notice	4
	Copyright	5
	Compliance	6
	Warranty	6
<hr/>		
2	Your portable DVD player	6
	What's in the box	6
	Overview of the main unit	7
<hr/>		
3	Get started	9
	Charge power	9
	Switch on/off	11
	Select OSD language	11
<hr/>		
4	Play discs	12
	Play options	12
	Connect additional equipment	15
<hr/>		
5	Settings	15
<hr/>		
6	Product information	16
<hr/>		
7	Troubleshooting	17

1 Important

Safety and notice

Read and understand all instructions before you use this product. If damage is caused by failure to follow the instructions, the warranty does not apply.

Safety

- Only use attachments/accessories specified by the manufacturer.
- Use only power supplies listed in the user manual.
- The product shall not be exposed to dripping or splashing.
- Do not place any sources of danger on the product (e.g. liquid filled objects, lighted candles).
- Batteries (battery pack or batteries installed) shall not be exposed to excessive heat such as sunshine, fire or the like.
- Danger of explosion if battery is incorrectly replaced. Replace only with the same or equivalent type.

Risk of swallowing batteries!

- The product or remote control may contain a button cell battery, which is possible to be swallowed. Keep the battery out of reach of children at all times! If swallowed, the battery can cause serious injury or death. Severe internal burns can occur within two hours of ingestion.
- If you suspect that a battery has been swallowed or placed inside any part of the body, seek immediate medical attention.
- When you change the batteries, always keep all new and used batteries out of reach of children. Ensure that the battery compartment is completely secure after you replace the battery.
- If the battery compartment cannot be completely secured, discontinue use of the product. Keep out of reach of children and contact the manufacturer.

Modification of the product could result in hazardous radiation of EMC or other unsafe operation.



Warning

- Where the MAINS plug or an appliance coupler is used as the disconnect device, the disconnect device shall remain readily operable.



Warning

- Never remove the casing of this product.
- Never lubricate any part of this product.
- Never place this product on other electrical equipment.
- Keep this product away from direct sunlight, naked flames or heat.
- Never look into the laser beam inside this product.
- Ensure that you always have easy access to the power cord, plug or adaptor to disconnect the product from the power.

Hearing safety

Listen at a moderate volume.

- Using headphones at a high volume can impair your hearing. This product can produce sounds in decibel ranges that may cause hearing loss for a normal person, even for exposure less than a minute. The higher decibel ranges are offered for those that may have already experienced some hearing loss.
- Sound can be deceiving. Over time your hearing 'comfort level' adapts to higher volumes of sound. So after prolonged listening, what sounds 'normal' can actually be loud and harmful to your hearing. To guard against this, set your volume to a safe level before your hearing adapts and leave it there.

To establish a safe volume level:

- Set your volume control at a low setting.
- Slowly increase the sound until you can hear it comfortably and clearly, without distortion.

Listen for reasonable periods of time:

- Prolonged exposure to sound, even at normally 'safe' levels, can also cause hearing loss.
- Be sure to use your equipment reasonably and take appropriate breaks.

Be sure to observe the following guidelines when using your headphones.

- Listen at reasonable volumes for reasonable periods of time.
- Be careful not to adjust the volume as your hearing adapts.
- Do not turn up the volume so high that you can't hear what's around you.
- You should use caution or temporarily discontinue use in potentially hazardous situations. Do not use headphones while operating a motorized vehicle, cycling, skateboarding, etc.; it may create a traffic hazard and is illegal in many areas.

Mains fuse (UK only)

This information applies only to products with a UK mains plug.

This product is fitted with an approved molded plug. If you replace the fuse, use one with:

- the ratings shown on the plug,
- a BS 1362 approval, and
- the ASTA approval mark.

Contact your dealer if you are not sure about what type of fuse to use.

Caution: To conform with the EMC directive (2004/108/EC), do not detach the plug from the power cord.

Notice



This product complies with the radio interference requirements of the European Community.

Disposal of your old product and battery



Your product is designed and manufactured with high quality materials and components, which can be recycled and reused.



This symbol on a product means that the product is covered by European Directive 2012/19/EU.



This symbol means that the product contains a built-in rechargeable battery covered by European Directive 2013/56/EU which cannot be disposed of with normal household

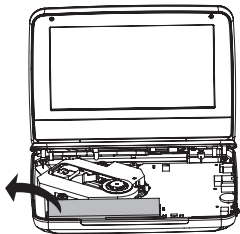
waste. We strongly advise you to take your product to an official collection point or a Philips service centre to have a professional remove the rechargeable battery. Inform yourself about the local separate collection system for electrical and electronic products and rechargeable batteries. Follow local rules and never dispose of the product and rechargeable batteries with normal household waste. Correct disposal of old products and rechargeable batteries helps prevent negative consequences for the environment and human health.

Environmental information

All unnecessary packaging has been omitted. We have tried to make the packaging easy to separate into three materials: cardboard (box), polystyrene foam (buffer) and polyethylene (bags, protective foam sheet.)

Your system consists of materials which can be recycled and reused if disassembled by a specialized company. Please observe the local regulations regarding the disposal of packaging materials, exhausted batteries and old equipment.

Always bring your product to a professional to remove the built-in battery.



Copyright



Be responsible
Respect copyrights

This item incorporates copy protection technology that is protected by U.S. patents and other intellectual property rights of Rovi Corporation. Reverse engineering and disassembly are prohibited.

Recording and playback of material might require consent. See Copyright Act 1956 and The Performer's Protection Acts 1958 to 1972.

Compliance

This apparatus includes this label:



Note

- The type plate is located on the bottom of the product.

Warranty

- Never attempt to repair the product, this could lead to the risk of injury, damage to the product and will void your warranty.
- Use the product and accessories only as intended by the manufacturer: The caution sign printed on the back of the product indicates risk of electric shock.
- Never remove the cover of the product. Always contact Customer Support for service or repairs.
- Any operation expressly prohibited in this manual, or any adjustments and assembly procedures not recommended or authorized in this manual shall void the warranty.

2 Your portable DVD player

Congratulations on your purchase, and welcome to Philips! To fully benefit from the support that Philips offers, register your product at www.philips.com/welcome.

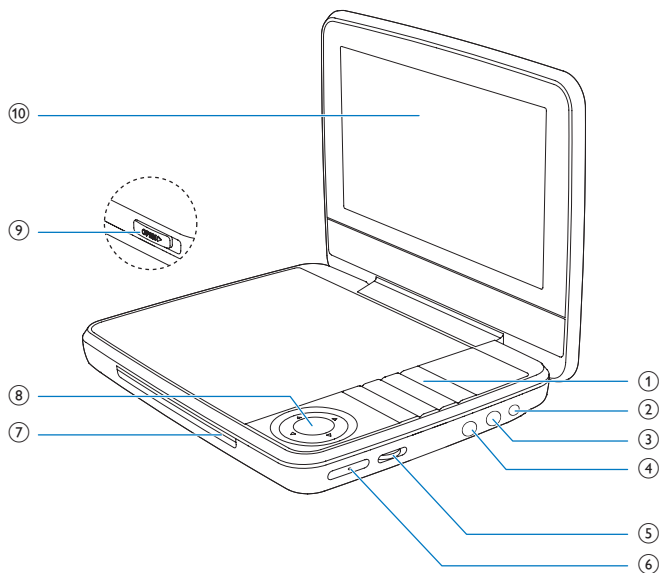
What's in the box

Check and identify the contents of your package:

- Portable DVD player
- AC power adaptor, ASUC12B-090080 (Philips)

- Car adaptor
- Short user manual

Overview of the main unit



① POWER

- Turns on/off DVD player.

AUDIO

- For DVD, selects an audio language.
- For VCD, selects an audio mode.

SUBTITLE

- Selects DVD subtitle language.

DISC MENU

- For DVD, accesses or exits disc menu.

- For VCD, turns on or off PBC (Playback Control) mode.
- For VCD version 2.0 or SVCD with PBC turned on, returns to the menu.



- Stops disc play.



- Accesses options relating to the current activity or selection.
- Accesses or exits the setup menu.



- Skips to the previous or next title, chapter, or track.

② 9-12V DC IN

- Power supply socket.

③

- Headphone jack.

④ AV OUT

- Audio/video output jack.

⑤ VOLUME

- Increases or decreases volume.

⑥ RESET

- When the player hangs up, press it with a ball-point pen or similar tool to reset the player.

⑦ ▲, ▼, ◀, ▶

- Navigates menus.



- Searches backward/forward at different speeds.



- Confirms an entry or selection.
- Starts, pauses or resumes disc play.

⑧ CHR/ ⓪

- Charging indicator/Power indicator.

⑨ OPEN ▶

- Opens the disc compartment.

⑩ Display panel

3 Get started



Caution

- Use the controls only as stated in this user manual.
- Always follow the instructions in this chapter in sequence.

Charge power

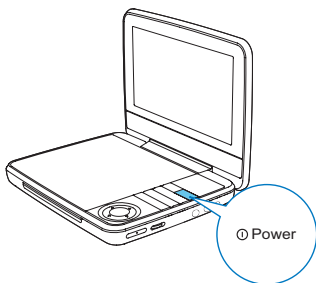
Charge through the AC adaptor



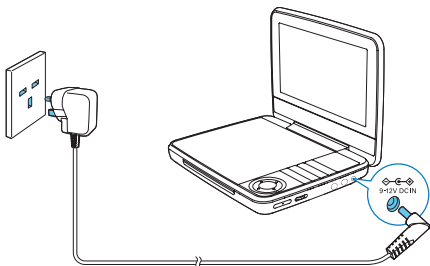
Caution

- Risk of product damage. Ensure that the power supply voltage corresponds to the voltage printed on the bottom of the player.
- Use only the supplied adaptors to charge the battery.
- Charge the player when it is powered off.

- 1 Press  to switch off the player.



- 2 Connect the supplied AC adaptor to the player and the AC outlet.



- ↳ The **CHR** indicator turns on (red).
- ↳ When the battery is fully charged, the **CHR** indicator turns off.

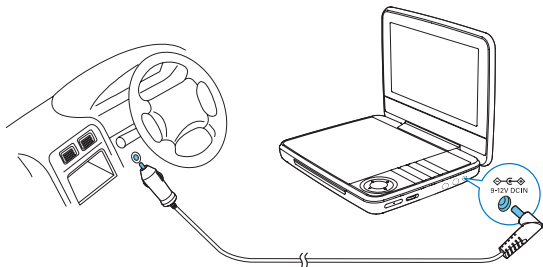


Tip

- To maximize battery life, recharge the battery immediately once the battery is fully discharged. If you do not use the player for a long time, recharge the battery once every two months.

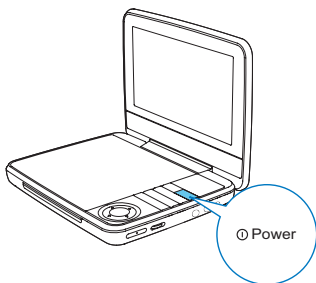
Charge through car adaptor

Connect the supplied car adaptor to the player and car cigarette lighter:



Switch on/off

- 1 Press **Ⓚ** to switch on the player.
↳ The power indicator turns on (green).



- 2 To switch off the player; press **Ⓚ**.
↳ The power indicator turns off.

Select OSD language

You can choose a different language for the on-screen display text.

- 1 Press **☰**.
↳ The options menu is displayed.
- 2 Select **[Setup] > [General] > [Language]**.
- 3 Press **▲ / ▼** to select an option.
- 4 Press **▶ || / OK** to confirm.
- 5 Press **☰** to exit.

4 Play discs

- 1 Slide **OPEN** ► on the player.
- 2 Insert the disc with label side facing up.
- 3 Push down to close the disc compartment.
 - ↳ Play starts automatically. If not, press ►||/OK.
 - If a menu is displayed, select an item, then press ►||/OK to start play.
 - To pause, press ►||/OK. Press again to resume play.
 - To stop, press ■ twice.
 - To select the previous/next item, press ◀ or ▶.
 - To start search within video/audio, press ◀ or ▶ once or more.

Play options

Select subtitle language

You can select a subtitle languages on DVDs.

- 1 Press ≡
 - ↳ The option menu is displayed.
- 2 Select **[Subtitles]** and press ►||/OK to confirm.
- 3 Press ▲ / ▼ to select a subtitle.
- 4 Press ►||/OK to confirm.

Select an audio language

You can select an audio language on DVDs or DivX discs.

- 1 Press ≡
 - ↳ The option menu is displayed.
- 2 Select **[Audio language]** and press ►||/OK to confirm.
- 3 Press ▲ / ▼ to select an audio language.
- 4 Press ►||/OK to confirm.

Repeat

During play, you can select different repeat options.

1 Press .

↳ The option menu is displayed.

2 Press  to select **[Repeat]** and press /OK.

↳ The repeat options is displayed.

For DVD

- **[Repeat A]**: the start of the section to repeat
- **[Repeat B]**: the end of the section to repeat
- **[Repeat Chapter]**: repeat the current chapter
- **[Repeat Title]**: repeat the current title or track
- **[Repeat all]**: repeat all titles on the disc
- **[Repeat Off]**: switch off the repeat mode

For VCD

- **[Repeat A]**: the start of the section to repeat
- **[Repeat B]**: the end of the section to repeat
- **[Repeat 1]**: repeat the current track
- **[Repeat all]**: repeat all tracks on the disc
- **[Repeat Off]**: switch off the repeat mode

For MP3/CD/DivX

- **[Repeat 1]**: repeat the current track
- **[Repeat Folder]**: repeat all the tracks in current folder
- **[Off]**: switch off the repeat mode

3 Select an option and press /OK to confirm.

4 Press  to exit.



Tip

- You cannot repeat items when PBC is on during VCD/SVCD play.

Random play

You can play tracks in random order on audio CDs or MP3 CDs.

1 Press .

↳ The option menu is displayed.

2 Select **[Shuffle All]** and press /OK.

- 3 Select **[On]** or **[Off]**, then press **▶||/OK** to confirm.
 - 4 Press **☰** to exit.
-

Zoom

You can zoom in and out for video images or pictures on DVDs, VCDs or JPEG CDs.

- 1 Press **☰**
↳ The option menu is displayed.
 - 2 Select **[Zoom & Pan]** and press **▶||/OK**.
 - 3 Press **▶||/OK** repeatedly to zoom in and out.
 - 4 When the video image or picture is enlarged, press **▲, ▼, ◀▶** to pan through it.
-

Display play information

You can view the play information during play.

- 1 Press **☰**
↳ The option menu is displayed.
 - 2 Press **▼** to select **[Display]** and press **▶||/OK** to confirm.
↳ For DVDs, title number, chapter number and elapsed play time is displayed.
For VCDs, track number and elapsed play time is displayed.
-

Select an audio mode

When you play VCDs, you can select an audio mode.

- 1 Press **☰**
↳ The option menu is displayed.
 - 2 Select **[Audio]** and press **▶||/OK**.
↳ The audio mode options are displayed.
 - 3 Press **▲ / ▼** to select an audio channel.
 - 4 Press **▶||/OK** to confirm.
-

Select a view angle

You can select different view angle on DVDs that contain alternate scenes.

- 1 Press **☰**
↳ The option menu is displayed.
- 2 Select **[Angle]** and press **▶||/OK** to confirm.

- 3 Press ▲ / ▼ to select an angle.
- 4 Press ► || / OK to confirm.

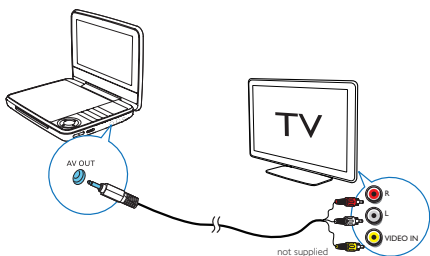
Connect additional equipment

You can connect the player to a TV or an amplifier to enjoy DVDs.



Caution

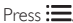
- Turn off your player before you connect it to any additional equipment.



- 1 Connect the AV cable (not supplied) to the **AV OUT** jack of the player.
- 2 Match the color of the AV cables (not supplied) with the jacks on your TV:
 - the yellow cable is for the yellow video jack,
 - the red or white cable is for the red or white audio jacks.

5 Settings

To maximize your play experience, use the setup menu to fine tune your settings.

- 1 Press 
 - ↳ The options menu is displayed.
- 2 Select **[Setup]**.
 - ↳ The setup menu is displayed.
- 3 Use navigation keys to select an option and press ► || / OK to confirm.

[General]	
[Language]	Select on-screen display language
[PBC settings]	Set playback control function on/off.
[Power save]	Set power saving mode.
[DivX (VOD)]	Get DivX registration code.
[DivX subtitles]	Select DivX subtitle language.
[Parental(DVD)]	Select parental options.
[Set password]	Change existing password (3308 by default).
[Factory settings]	Restore factory settings.
[Video]	
[LCD Display]	Set screen display aspect ratio.
[TV standard]	Set video output format to TV system.
[Brightness]	Adjust screen brightness.
[Contrast]	Adjust screen contrast.
[Audio]	
[Dolby]	Set Dolby output.
[Version]	Check the version information.

4 Press ◀ to go back to the previous menu.

5 Press ≡ to exit.

6 Product information



Note

- Product information is subject to change without prior notice.

Main unit

Dimensions	195 x 154 x 37 mm
Weight	0.675 kg
AC Power adaptor	ASUC12B-090080 (Philips)
Power supply	Input: 100-240V~ 50/60Hz Output: DC 9V ≡ 0.8A
Power consumption	9 W

Operating temperature range	0-45°C
Laser wavelength	650 nm
Video output	
Format	PAL & NTSC
Output level	1Vp - p ± 20%
Load impedance	75 Ω
Audio line out	
Audio out (analog audio)	Output level: 2V ± 10%
Load impedance	10 K Ω
Audio distortion + noise	≤ -80 (1KHz)
Frequency response	20Hz-20KHz ± 1dB
Signal/noise ratio	≥ 80 dB
Channel separation	≥ 80 dB
Dynamic range	≥ 80 dB
Playable media	
Disc	DVD, DVD-Video, VCD/SVCD, Audio CD DVD+R+RW, DVD-R/-RW, DVD+R/-R DL (Dual Layer) CD-R/CD-RW, MP3 media, JPEG files
File format	
Video	.avi, .divx, .mp4, xvid
Audio	.mp3

7 Troubleshooting



Warning

- Risk of electric shock. Never remove the casing of the player.

To keep the warranty valid, never try to repair the system yourself.

If you encounter problems when using the player, check the following points before requesting service. If the problem remains unsolved, register your player and get support at www.philips.com/support. When you contact Philips, ensure that your apparatus is nearby and the model number and serial number are available.

No power

- Ensure that both plugs of the mains cord are properly connected.
- Ensure that there is power at the AC outlet.
- Check if the built-in battery is drained.

No sound

- Ensure that the AV cable is connected correctly.

No response to the remote control

- Ensure that the path between the remote control and the player is clear from obstacles.
- From a close distance, point the remote control directly at the player.
- Replace the remote control batteries.
- The function does not work for this disc. Refer to the disc instructions.

Distorted picture

- Clean the disc. With a clean, soft, lint-free cloth, wipe the disc outwards from the center.
- Make sure that the video output format of the disc is compatible with the TV.
- Change the video output format to match your TV or program.
- The LCD is manufactured using high precision technology. You may, however, see tiny black points and/or bright points (red, blue, green) that continuously appear on the LCD. This is a normal result of the manufacturing process and does not indicate a malfunction.

Cannot play disc

- Ensure the disc label is upwards.
- Clean the disc. With a clean, soft, lint-free cloth, wipe the disc outwards from the center.
- Check if the disc is defective by trying another disc.

No response to operating commands

- The operation is not permitted by the disc.

Not work properly or freeze up

- Press **RESET** with a ball-point pen or similar tool to switch off the player, and press **⏪** to restart.

The player feels warm

- When the player is in use for a long period of time, its surface will be heated. This is normal.

No/weak signal displayed on the screen

- TV signal is too weak or out of TV signal covering area.
- Make sure you are in an area with sufficient coverage.

- Connect to your home TV antenna socket.
- Receiving TV in a driving car may cause signal problems.

TV reception with Black and White picture or no sound

- Ensure that you set the TV format correctly according to local TV broadcast specifications. If you do not know the information, contact local TV broadcast authorities for help.



Dolby and the double-D symbol are registered trademarks of Dolby Laboratories.

DivX.

This DivX Certified[®] device has passed rigorous testing to ensure it plays DivX[®] video. To play purchased DivX movies, first register your device at vod.divx.com. Find your registration code in the DivX VOD section of your device setup menu.

DivX Certified[®] to play DivX[®] video, including premium content.

DivX[®], DivX Certified[®] and associated logos are trademarks of DivX, LLC and are used under license.

Covered by one or more of the following U.S. patents: 7,295,673; 7,460,668; 7,515,710; 7,519,274.

DivX Certified[®] devices have been tested for high-quality DivX[®] (.divx, .avi) video playback. When you see the DivX logo, you know you have the freedom to play your favorite DivX movies.



Specifications are subject to change without notice
© 2015 Koninklijke Philips N.V. All rights reserved.
Trademarks are the property of Koninklijke Philips N.V. or
their respective owners.

PD7001B_05_UM_V1.0

