

Register your product and get support at
www.philips.com/welcome

FWM997/55



EN User manual

PHILIPS

Contents

1 Important	4	8 Listen to radio	16
Safety	4	Tune to a radio station	16
Notice	5	Program radio stations automatically	16
		Program radio stations manually	16
		Select a preset radio station	17
		Change AM tuning grid	17
2 Your Mini Hi-Fi	6		
Introduction	6	9 USB record	17
What's in the box	6	Record to USB	17
Overview of the main unit	7	Schedule radio-to-USB record	18
Overview of the remote control	8		
3 Connect	10	10 Other features	19
Connect FM antenna	10	Set the alarm timer	19
Connect AM antenna	10	Set the sleep timer	19
Connect speakers	10	Listen to an external device	19
Connect power	11	Delete files in the USB device	20
		Karaoke	20
4 Get started	12	Adjust display brightness	20
Prepare the remote control	12	Select button light display	20
Auto install radio stations	12		
Set clock	12	11 Product information	21
Turn on	13	Specifications	21
		USB playability information	22
5 Play	13	Supported MP3 disc formats	22
Play disc	13	Maintenance	22
Play from USB	14		
		12 Troubleshooting	23
6 Play options	14		
Repeat and random play	14		
Program tracks	14		
Display play information	15		
7 Adjust volume level and sound effect	15		
Adjust volume level	15		
Mute sound	15		
Boost loudness	15		
Select a preset sound effect	15		
Enhance bass	16		
Virtual surround	16		
Customize sound for room acoustics	16		

1 Important

Safety

- ① Read these instructions.
- ② Keep these instructions.
- ③ Heed all warnings.
- ④ Follow all instructions.
- ⑤ Do not use this apparatus near water.
- ⑥ Clean only with dry cloth.
- ⑦ Do not block any ventilation openings. Install in accordance with the manufacturer's instructions.
- ⑧ Do not install near any heat sources such as radiators, heat registers, stoves, or other apparatus (including amplifiers) that produce heat.
- ⑨ Protect the power cord from being walked on or pinched, particularly at plugs, convenience receptacles, and the point where they exit from the apparatus.
- ⑩ Only use attachments/accessories specified by the manufacturer.
- ⑪ Use only with the cart, stand, tripod, bracket, or table specified by the manufacturer or sold with the apparatus. When a cart is used, use caution when moving the cart/apparatus combination to avoid injury from tipping over.
- ⑫ Unplug this apparatus during lightning storms or when unused for long periods of time.
- ⑬ Refer all servicing to qualified service personnel. Servicing is required when the apparatus has been damaged in any way, such as power-supply cord or plug is damaged, liquid has been spilled or objects have fallen into the apparatus, the apparatus has been exposed to rain or moisture, does not operate normally, or has been dropped.
- ⑭ Battery usage **CAUTION** – To prevent battery leakage which may result in bodily injury, property damage, or damage to the unit:
 - Install all batteries correctly, + and - as marked on the unit.
 - Do not mix batteries (old and new or carbon and alkaline, etc.).
 - Remove batteries when the unit is not used for a long time.
- ⑮ Apparatus shall not be exposed to dripping or splashing.
- ⑯ Do not place any sources of danger on the apparatus (e.g. liquid filled objects, lighted candles).
- ⑰ This product may contain lead and mercury. Disposal of these materials may be regulated due to environmental considerations. For disposal or recycling information, please contact your local authorities or the Electronic Industries Alliance: www.eiae.org.
- ⑱ Where the MAINS plug or an appliance coupler is used as the disconnect device, the disconnect device shall remain readily operable.





Warning

- Never remove the casing of this Mini Hi-Fi.
- Never lubricate any part of this Mini Hi-Fi.
- Never place this Mini Hi-Fi on other electrical equipment.
- Keep this Mini Hi-Fi away from direct sunlight, naked flames or heat.
- Never look into the laser beam inside the Mini Hi-Fi.
- Ensure that you always have easy access to the power cord, plug or adaptor to disconnect the Mini Hi-Fi from the power.



Caution

- Use of controls or adjustments or performance of procedures other than herein may result in hazardous radiation exposure or other unsafe operation.

packaging materials, exhausted batteries and old equipment.



Windows Media and the Windows logo are trademarks, or registered trademarks of Microsoft Corporation in the United States and/or other countries.

This Mini Hi-Fi includes this label:



Notice

Any changes or modifications made to this device that are not expressly approved by Philips Consumer Lifestyle may void the user's authority to operate the equipment.



**Be responsible
Respect copyrights**

The making of unauthorized copies of copy-protected material, including computer programs, files, broadcasts and sound recordings, may be an infringement of copyrights and constitute a criminal offence. This equipment should not be used for such purposes.

Environmental information

All unnecessary packaging has been omitted. We have tried to make the packaging easy to separate into three materials: cardboard (box), polystyrene foam (buffer) and polyethylene (bags, protective foam sheet.) Your system consists of materials which can be recycled and reused if disassembled by a specialized company. Please observe the local regulations regarding the disposal of

2 Your Mini Hi-Fi

Congratulations on your purchase, and welcome to Philips! To fully benefit from the support that Philips offers, register your product at www.Philips.com/welcome.

Introduction

With this Mini Hi-Fi, you can enjoy audio from discs, USB devices, external devices, or radio stations.

For your convenience, you can load up to 3 discs at once.

To enrich sound, this Mini Hi-Fi offers you these sound effects:

- MAX sound for instant power boost
- Digital Sound Control (DSC)
- Dynamic Bass Boost (DBB)
- Incredible surround (IS)
- Virtual Ambience-based Control (VAC)

The Mini Hi-Fi supports the following media formats:

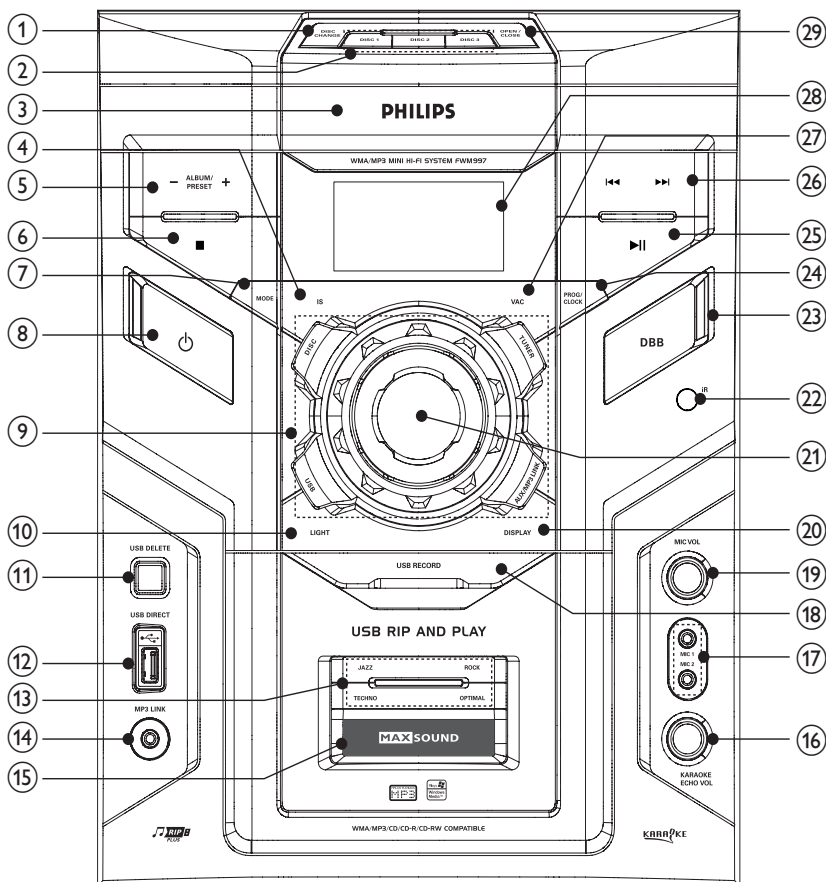


What's in the box


Check and identify the contents of your package:

- Main unit x 1
- AC power cable x 2
- Power plug adaptor x 1
- Front speakers x 2
- Rear speakers x 2
- Subwoofer x 1
- Remote control (with 2 AAA batteries)
- FM wire antenna x 1
- AM loop antenna x 1
- MP3 link cable x 1
- DIN cable x 1

Overview of the main unit

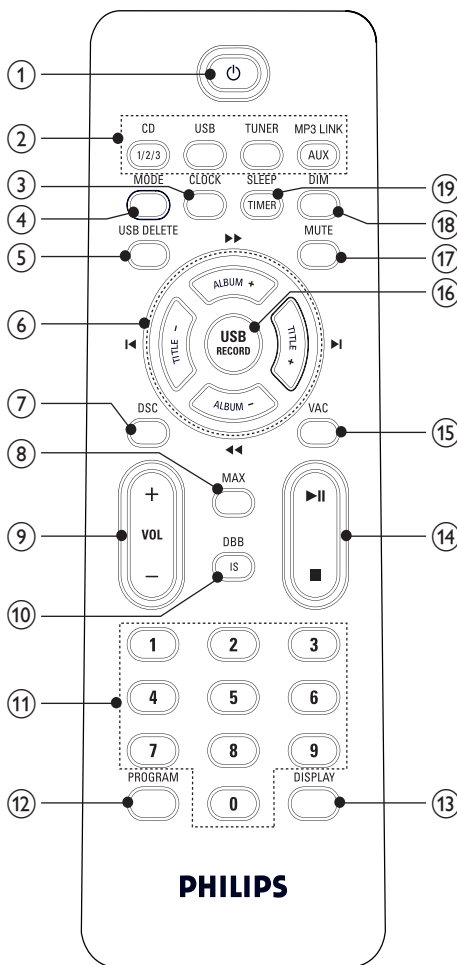



- | | |
|--|---|
| <p>① DISC CHANGE</p> <ul style="list-style-type: none"> • Change a disc tray. <p>② DISC 1/2/3</p> <ul style="list-style-type: none"> • Select a disc tray. <p>③ Disc compartment door</p> <p>④ IS</p> <ul style="list-style-type: none"> • Turn on or off incredible surround. <p>⑤ ALBUM/PRESET +/-</p> <ul style="list-style-type: none"> • Skip to the previous/next album. • Select a preset radio station. • Adjust time. • Select 12 hour or 24 hour format. | <p>⑥ ■</p> <ul style="list-style-type: none"> • Stop play or erase a program. <p>⑦ MODE</p> <ul style="list-style-type: none"> • Select repeat play or random play. <p>⑧ ⏻</p> <ul style="list-style-type: none"> • Turn on the system or switch to standby mode. <p>⑨ Source selection keys</p> <ul style="list-style-type: none"> • Select a source. <p>⑩ LIGHT</p> <ul style="list-style-type: none"> • Select a lighting effect for the main unit. |
|--|---|

- ⑪ **USB DELETE**
 - Delete audio files stored on a USB device.
- ⑫ **USB DIRECT** 
 - Jack for a USB mass storage device.
- ⑬ **DSC**
 - Select a preset sound equalizer setting.
- ⑭ **MP3 LINK**
 - Audio input jack (3.5mm) for an external audio device.
- ⑮ **MAX SOUND**
 - Turn on or off instant power boost for sound.
- ⑯ **KARAOKE ECHO VOL**
 - Adjust echo level.
- ⑰ **MIC 1/2**
 - Jack for a microphone.
- ⑱ **USB RECORD**
 - Record to a USB device.
- ⑲ **MIC VOL**
 - Adjust microphone volume.
- ⑳ **DISPLAY**
 - Select display information.
- ㉑ **VOLUME**
 - Adjust volume.
- ㉒ **IR**
 - Remote sensor.
- ㉓ **DBB**
 - Turn on or off dynamic bass enhancement.
- ㉔ **PROG/CLOCK**
 - Program tracks.
 - Program radio stations.
 - Set the clock.
- ㉕ **▶||**
 - Start or pause play.
- ㉖ **⏮⏭▶**
 - Skip to the previous/next track.
 - Search within a track/disc/USB.
 - Tune to a radio station.
 - Adjust time.


- ㉗ **VAC**
 - Select an ambience-based equaliser setting.
- ㉘ **Display panel**
 - Show current status.
- ㉙ **Open/Close**
 - Open or close the disc compartment.

Overview of the remote control



- ① 
 - Turn on the Mini Hi-Fi, or switch to standby mode.
- ② **Source selection keys**
 - Select a source.
- ③ **CLOCK**
 - Set the clock.
- ④ **MODE**
 - Select repeat play or random play.
- ⑤ **USB DELETE**
 - Delete audio files stored on a USB device.
- ⑥ **TITLE+/-◀▶**
 - Skip to the previous/next track.
 - Select a preset radio station.
 - Adjust time.

ALBUM +/-◀▶▶

 - Skip to the previous/next album.
 - Search within a track/ disc/USB.
 - Tune to a radio station.
 - Adjust time.
- ⑦ **DSC**
 - Select a preset sound equalizer setting.
- ⑧ **MAX**
 - Turn on or off instant power boost for sound.
- ⑨ **VOL +/-**
 - Adjust volume.
- ⑩ **DBB/IS**
 - Turn on or off dynamic bass enhancement.
 - Turn on or off incredible surround.
- ⑪ **Numeric keypad**
 - Select a track from a disc directly.
- ⑫ **PROGRAM**
 - Program tracks.
 - Program radio stations.
- ⑬ **DISPLAY**
 - Select display information.
- ⑭ 
 - Stop play or erase a program.

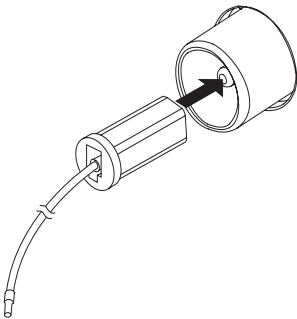
▶||

 - Start or pause play.
- ⑮ **VAC**
 - Select an ambience-based equaliser setting.
- ⑯ **USB RECORD**
 - Record to a USB device.
- ⑰ **MUTE**
 - Mute volume.
- ⑱ **DIM**
 - Select different levels of display brightness.
- ⑲ **SLEEP/TIMER**
 - Set the sleep timer.
 - Set the alarm timer.

3 Connect

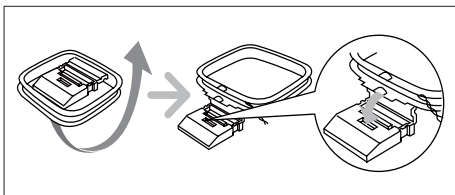
Connect FM antenna

- 1 Connect the supplied FM antenna to the **FM** jack on the back of the main unit.

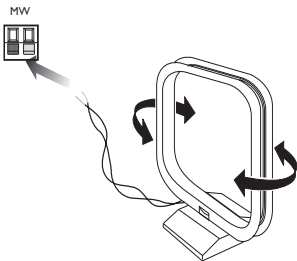


Connect AM antenna

- 1 Assemble the AM loop antenna.



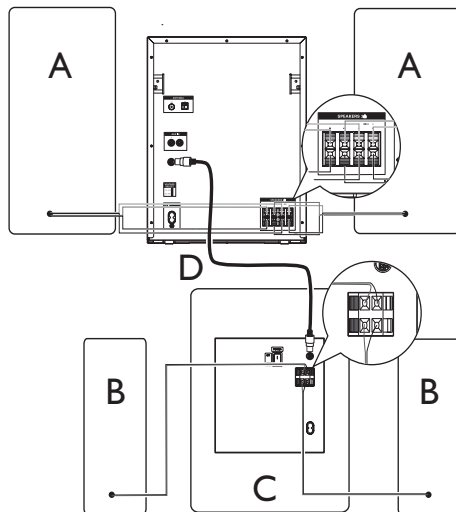
- 2 Connect the AM loop antenna to the **AM** jack on the back of the main unit.



Connect speakers

Note

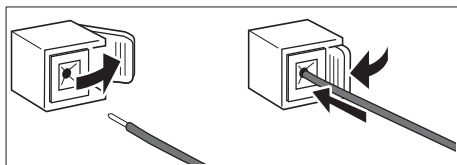
- For optimal sound, use the supplied speakers only.
- Connect only speakers with impedance that is the same or higher than the supplied speakers. Refer to the Specifications section of this manual.



A: front speakers; B: rear speaker; C: subwoofer;
D: DIN cable

Connect the front speakers

- 1 For the right front speaker, find the sockets on the main unit marked "R".
- 2 Insert the blue-black wires into a pair of blue-black (+/-) sockets, the blue wire into the blue (+) socket, the black wire into the black (-) socket.
- 3 Insert each speaker wire:
 - ① Hold down the socket flap.
 - ② Insert the stripped part of the wire completely.
 - ③ Release the socket flap.



- 4 Insert the white-black wires into a pair of white-black (+/-) sockets, the white wire into the white (+) socket, the black wire into the black (-) socket.
- 5 For the left front speaker, find the sockets on the main unit marked "L".
- 6 Repeat steps 2-4 to connect the left front speaker.

Connect the rear speakers

- 1 For the right rear speaker, find the sockets on the back of the subwoofer marked "R".
- 2 Insert the purple wire into the purple socket (+) and the black wire into the black socket (-).
- 3 For the left rear speaker, find the sockets on the back of the subwoofer marked "L".
- 4 Repeat step 2 to connect the left rear speaker.

Connect the subwoofer

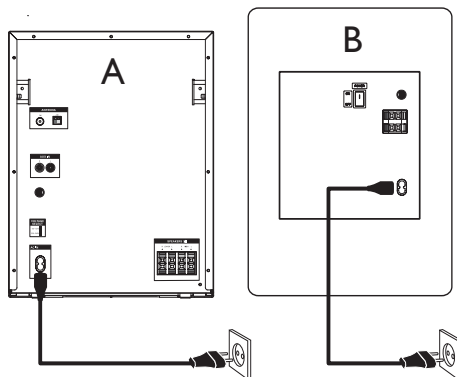
- 1 Connect the DIN cable to **SUBWOOFER** jack on the main unit and **FROM MAIN** jack on the subwoofer.

Connect power



Caution

- Risk of product damage! Ensure that the power supply voltage corresponds to the voltage set on the voltage selector on the back of the Mini Hi-Fi and the subwoofer.
- Before you connect the AC power cord, ensure that you have completed all other connections.



A: main unit; B: subwoofer



Note

- The type plate is located on the back of the main unit.
- The type plate is located on the back of the subwoofer.

- 1 If your power supply voltage is 110V-127V, adjust the voltage selector to 110V-127V for the main unit and the subwoofer.
- 2 Connect one AC power cable to:
 - the main unit.
 - the wall socket.
- 3 Connect one AC power cable to:
 - the subwoofer.
 - the wall socket.

4 Get started

! Caution

- Use the controls only as stated in this user manual.

Always follow the instructions in this chapter in sequence.

If you contact Philips, you will be asked for the model and serial number of your Mini Hi-Fi. The model number and serial number are on the back of your Mini Hi-Fi. Write the numbers here:

Model No. _____

Serial No. _____

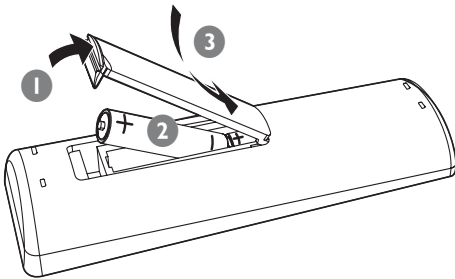
Prepare the remote control

! Caution

- Risk of explosion! Keep batteries away from heat, sunshine or fire. Never discard batteries in fire.

To replace the remote control battery:

- 1 Open the battery compartment.
- 2 Insert 2 AAA batteries with correct polarity (+/-) as indicated.
- 3 Close the battery compartment.



≡ Note

- If you are not going to use the remote control for a long time, remove the batteries.
- Do not use old and new or different types of batteries in combination.
- Batteries contain chemical substances, so they should be disposed of properly.

Auto install radio stations

When you connect power and no radio stations are stored, the Mini Hi-Fi automatically begins to store radio stations.

- 1 Connect the Mini Hi-Fi to the power supply.
 - ↳ [AUTO INSTALL - PRESS PLAY] (auto install - press the PLAY button) is displayed.
- 2 Press **▶||** on the main unit to start installation.
 - ↳ [AUTO] (auto) is displayed.
 - ↳ The Mini Hi-Fi automatically stores radio stations with sufficient signal strength.
 - ↳ When all the available radio stations are stored, the first preset radio station is broadcast automatically.

Set clock

- 1 In the standby mode, press **CLOCK** to activate the clock setting mode.
 - ↳ The 12 hour or 24 hour format is displayed.
- 2 Press **ALBUM +/-◀▶▶▶** repeatedly to select 12 hour or 24 hour format.
- 3 Press **CLOCK** to confirm.
 - ↳ The clock digits are displayed and begin to blink.
- 4 Press **ALBUM +/-◀▶▶▶** to set the hour.

- 5 Press **TITLE**+**⏮**/**⏭** to set the minute.
- 6 Press **CLOCK** to confirm.

Tip

- To view the clock during play, press **CLOCK**.

Turn on

- 1 Press **⏻** to turn on the main unit.
↳ The system switches to the last selected source.
- 2 Press **POWER** switch on the back of the subwoofer to turn on the subwoofer.

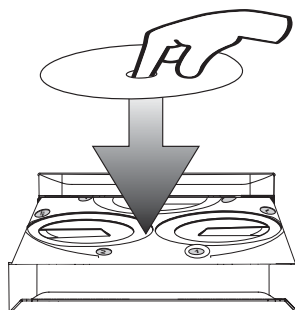
Switch to standby

- 1 Press **⏻** to switch the Mini Hi-Fi to standby mode.
↳ The backlight on the display panel turns off.
↳ The clock (if set) appears on the display panel.

5 Play

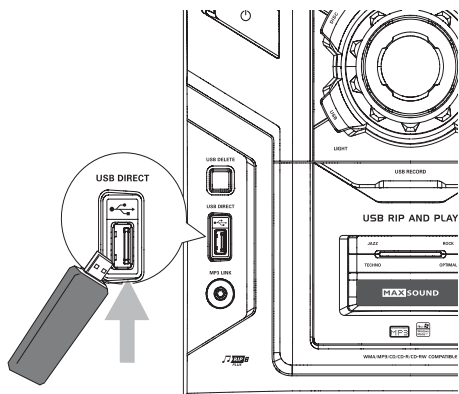
Play disc

- 1 Press **CD 1/2/3** to select the disc source.
- 2 Press **OPEN/CLOSE** on the main unit to open the disc compartment.
- 3 Load up to two discs on the disc trays, with the printed side facing up
 - To load the third disc, press **DISC CHANGE** on the main unit to rotate to the disc tray.



- 4 Press **OPEN/CLOSE** on the main unit to close the disc compartment.
- 5 Press **▶||** to start play.
 - To select a disc, press **CD 1/2/3**.
 - To pause/resume play, press **▶||**.
 - To stop play, press **■**.
 - To select another track, press **TITLE**+**⏮**/**⏭** or press a numeric button.
 - To select an folder, press **ALBUM** +/- **◀◀▶▶**.
 - To search within a track, press and hold **ALBUM** +/- **◀◀▶▶**, then release to resume normal play.

Play from USB



Note

- Ensure that the USB device contains playable audio contents for supported formats.

- 1 Insert the USB plug of the device into the socket.
- 2 Press **USB** to select the USB source.
- 3 Press **ALBUM +/-<||>** to select a folder.
- 4 Press **TITLE+/-<||>** to select an audio file.
- 5 Press **▶||** to start play.
 - To pause/resume play, press **▶||**.
 - To stop play, press **■**.
 - To search within an audio file, press and hold **ALBUM +/-<||>**, then release to resume normal play.

6 Play options

Repeat and random play

- 1 Press **MODE** repeatedly to select:
 - : the current track is played repeatedly.
 - : all tracks are played repeatedly.
 - : all tracks are played randomly and repeatedly.
 - : all tracks are played randomly.
- 2 To return to normal play, press **MODE** repeatedly until play mode is no longer displayed.

Tip

- Shuffle play cannot be selected when you play programmed tracks.

Program tracks

You can program a maximum of 40 tracks.

- 1 At CD/USB mode, in the stop position, press **PROGRAM** to activate the program mode.
↳ [PROG] (program) blinks on the display.
- 2 For MP3/WMA tracks, press **ALBUM +/-<||>** to select an album.
- 3 Press **TITLE+/-<||>** to select a track number, then press **PROGRAM** to confirm.
- 4 Repeat steps 2 to 3 to select and store all tracks to program.
- 5 Press **▶||** to play the programmed tracks.
↳ During play, [PROG] (program) is displayed.
 - To erase the program, in the stop position, press **■**.

Display play information

- 1 During play, press **DISPLAY** repeatedly to select different play information.

7 Adjust volume level and sound effect



Note

- MAX sound and DSC (Digital Sound Control) cannot be activated at the same time.

Adjust volume level

- 1 During play, press **VOL +/-** to increase/decrease the volume level.

Mute sound

- 1 During play, press **MUTE** to mute/unmute sound.

Boost loudness

MAX gives an instant boost to the sound power:

- 1 Press **MAX** to turn on or off the instant power boost.
 - ↳ If MAX sound is activated, **MAX** is displayed.

Select a preset sound effect

The DSC (Digital Sound Control) enables you to enjoy special sound effects.

- 1 During play, press **DSC** repeatedly to select:
 - [JAZZ] (jazz)
 - [ROCK] (rock)
 - [TECHNO] (techno)
 - [OPTIMAL] (optimal)

Enhance bass

The best DBB (Dynamic Bass Enhancement) setting is generated automatically for each DSC selection. You can manually select the DBB setting that best suits your listening environment.

- 1 During play, press **DBB/IS** repeatedly to select:
 - DBB 1
 - DBB 2
 - DBB 3
 - DBB off↳ If DBB is activated, **DBB** is displayed.

Virtual surround

You can enhance audio with a virtual surround sound effect.

- 1 Press and hold **DBB/IS** to turn on or off the incredible surround.
 - On the main unit, press **IS**.↳ If the incredible surround is activated, **[INC SURR]** (incredible surround) is displayed.

Customize sound for room acoustics

- 1 During play, press **VAC** repeatedly to select a type of listening environment:
 - **[HALL]** (hall)
 - **[CONCERT]** (concert)
 - **[CINEMA]** (cinema)

8 Listen to radio

Tune to a radio station

- 1 Press **TUNER** repeatedly to select FM or AM.
- 2 Press and hold **ALBUM +/-◀▶▶** for more than 2 seconds.
 - ↳ **[SEARCH]** (search) is displayed.
 - ↳ The radio tunes to a station with strong reception automatically.
- 3 Repeat step 2 to tune to more stations.
 - To tune to a weak station, press **ALBUM +/-◀▶▶** repeatedly until you find optimal reception.

Program radio stations automatically

You can program a maximum of 40 preset radio stations.

- 1 In the tuner mode, press and hold **PROGRAM** for more than 2 seconds to activate automatic program mode.
 - ↳ **[AUTO]** (auto) is displayed.
 - ↳ All available stations are programmed in the order of waveband reception strength.
 - ↳ The first programmed radio station is broadcast automatically.

Program radio stations manually

You can program a maximum of 40 preset radio stations.

- 1 Tune to a radio station. (see 'Tune to a radio station' on page 16)

- 2 Press **PROGRAM** to activate program mode.
↳ [PROG] (program) blinks on the display.
- 3 Press **TITLE+/-<||>▶** to allocate a number to this radio station, then press **PROGRAM** to confirm.
↳ The preset number and the frequency of the preset station are displayed.
- 4 Repeat the above steps to program other stations.



Tip

- To overwrite a programmed station, store another station in its place.

Select a preset radio station

- 1 In tuner mode, press **TITLE+/-<||>▶** to select a preset number.



Tip

- Position the antenna as far as possible from TV, VCR or other radiation source.
- For optimal reception, fully extend and adjust the position of the antenna.

Change AM tuning grid


In some countries, the AM radio frequency step between adjacent channels is 9 kHz (10 kHz in some areas).

- 1 Select the tuner source.
- 2 Press and hold **■** on the main unit for more than 5 seconds.
↳ The frequency step is changed to 9 kHz or 10 kHz.
↳ All preset stations are erased and need to be re-programmed.

9 USB record

Audio CD tracks, MP3 files, radio and audio from external devices are recorded in .mp3 format, and WMA files are recorded in .wma format. The first time you record to USB, a folder called 'PHILIPS' is automatically created in the USB device. Each time you record to USB, the recorded files are stored in a sub-folder in the 'PHILIPS' folder. Files and sub-folders are named numerically in the order in which they are created.

Record to USB

- 1 Plug the USB device into the  socket of this Mini Hi-Fi.
- 2 Prepare the source to record from.
 - Disc - load a disc (see 'Play disc' on page 13). You can select a track from which a recording starts.
 - Radio - tune to a radio station. (see 'Tune to a radio station' on page 16)
 - MP3 LINK/AUX - connect and start to play an external device. (see 'Listen to an external device' on page 19)
- 3 Press **USB RECORD** to start recording.
 - For discs, press **USB RECORD** repeatedly to select:
 - (A) [REC ONE] (record one): the first/ current track is recorded.
 - (B) [REC ALL] (record all): all tracks/the remaining tracks are recorded.
 - ↳ Disc play starts automatically from the beginning of the disc/the selected track, and the recording starts.
 - To stop recording, press **■**.



Note




- If the USB device does not have enough memory to store the audio files, [MEMORY FULL] (memory full) is displayed.

Schedule radio-to-USB record

Schedule radio recordings in advance and you can listen to your favorite programs at your convenience.

Note



- The maximum length of a recording is 12 hours.

- 1 Ensure that you have set the clock correctly. (see 'Set clock' on page 12)
- 2 Insert the USB plug of the device into the  socket.
- 3 Tune to a radio station. (see 'Tune to a radio station' on page 16)
- 4 Press  to switch to standby mode.
- 5 Press and hold **SLEEP/TIMER** for more than 2 seconds.
 - ↳ A prompt to select the source is displayed.
- 6 Press **TUNER** to select the tuner source.
- 7 Press **USB RECORD**.
 - ↳ The start timer digits are displayed and begin to blink.
- 8 Press **ALBUM +/-<<>>** to set the hour.
- 9 Press **TITLE+/-<<>>** to set the minute.
- 10 Press **SLEEP/TIMER** to confirm.
 - ↳ The end timer digits are displayed and begin to blink.
- 11 Press **ALBUM +/-<<>>** to set the hour.
- 12 Press **TITLE+/-<<>>** to set the minute.
- 13 Press **SLEEP/TIMER** to confirm.
 - ↳  is displayed.
 - ↳ At the scheduled times, the recording begins and ends automatically.
 - ↳ When the recording ends, the Mini Hi-Fi switches to standby mode.

Tip

- A recording is activated only in the standby mode.

To deactivate or re-activate a record timer

- 1 In the standby mode, press **SLEEP/TIMER** repeatedly.
 - ↳ If the timer is activated,  is displayed.
 - ↳ If the timer is deactivated,  disappears.

10 Other features

Set the alarm timer

This Mini Hi-Fi can be used as an alarm clock. The disc, radio or USB is activated to play at a preset time.

Note

- If you have set a record timer and an alarm timer, only the latest timer is activated.

- 1 Ensure that you have set the clock correctly. (see 'Set clock' on page 12)
- 2 Press **⏻** to switch to standby mode.
- 3 Press and hold **SLEEP/TIMER** for more than 2 seconds.
↳ A prompt to select the source is displayed.
- 4 Press **CD 1/2/3**, or **TUNER** or **USB** to select a source.
- 5 Press **SLEEP/TIMER** to confirm.
↳ The clock digits are displayed and begin to blink.
- 6 Press **ALBUM +/-◀▶** to set the hour.
- 7 Press **TITLE+/-◀▶** to set the minute.
- 8 Press **SLEEP/TIMER** to confirm.
↳ The timer is set and activated.

To deactivate or re-activate a alarm timer

- 1 In the standby mode, press **SLEEP/TIMER** repeatedly.
↳ If the timer is activated, **⌚** is displayed.
↳ If the timer is deactivated, **⌚** disappears.

Tip

- In MP3 link or AUX mode, the alarm timer cannot be set.
- If disc or USB source is selected but no audio file can be played, radio is activated automatically.

Set the sleep timer

This Mini Hi-Fi can switch to standby automatically after a set period of time.

- 1 When the Mini Hi-Fi is turned on, press **SLEEP/TIMER** repeatedly to select a set period of time (in minutes).
↳ When sleep timer is activated, **zz** is displayed.

To deactivate sleep timer

- 1 Press **SLEEP/TIMER** repeatedly until **[OFF]** (off) is displayed.
↳ When sleep timer is deactivated, **zz** disappears on the display.

Listen to an external device

You can listen to an external audio device through this Mini Hi-Fi.

For audio players with headphone sockets

- 1 Press **MP3 LINK/AUX** repeatedly to select the MP3 link source.
- 2 Connect the supplied MP3 link cable to:
 - the **MP3 LINK** jack (3.5mm) on the Mini Hi-Fi.
 - the headphone jack on an external device.
- 3 Start to play the device (see the device user manual).

For audio players with red/white audio output sockets

- 1 Press **MP3 LINK/AUX** repeatedly to select the AUX source.
- 2 Connect the audio cables (white/red jacks, not supplied) to:
 - the **AUX IN** jacks on the back of the Mini Hi-Fi.
 - the **AUDIO OUT** jacks on an external device.
- 3 Start to play the device (see the device user manual).

Delete files in the USB device

- 1 During USB play, press **TITLE**+**[-< / >]** to select an audio file.
 - To delete an audio folder, in the stop position, press **ALBUM** +**[-< << / >> >]** to select an audio folder.
- 2 Press **USB DELETE**.
 - ↳ A confirmation message is displayed.
- 3 While the message is displayed, press **USB DELETE** again to confirm.
 - To cancel, press **■**.
 - ↳ After you delete a file or an audio folder, the USB play stops.

Karaoke

You can connect a microphone and sing along with a music source.

- 1 Turn **MIC VOL** to the minimum level.
- 2 Connect a microphone to the **MIC 1/2** jack of the Mini Hi-Fi.
- 3 Press **CD 1/2/3**, or **TUNER**, or **USB**, or **MP3 LINK/AUX** to select the source, and start play.
- 4 Sing through the microphone.
 - To adjust the volume of the source, press **VOL +/-**.
 - To adjust the volume of the microphone, turn **MIC VOL**.
 - To adjust the echo level, turn **KARAOKE ECHO VOL**.

Adjust display brightness

- 1 Press **DIM** repeatedly to select different levels of display brightness.

Select button light display

- 1 Press **LIGHT** repeatedly on the main unit.
 - ↳ Each time you press **LIGHT**, the main unit buttons light up in a different way.

11 Product information



Note

- Product information is subject to change without prior notice.

Specifications

Amplifier

Total output power	800W RMS
Signal-to-noise ratio	67dB A (IEC)
Frequency response	60 - 16000Hz
AUX	1500mV/2000mV

Disc

Laser type	Semiconductor
Disc diameter	12cm/8cm
Support disc	CD-DA, CD-R, CD-RW, MP3-CD, WMA-CD
Audio DAC	24Bits / 44.1kHz
Total harmonic distortion	<1.5%
Frequency response	60Hz -16kHz (44.1kHz)
S/N ratio	>75dBA

Tuner

Tuning range	FM: 87.5 - 108MHz AM: 531 - 1602kHz (9kHz); 530 - 1700kHz (10kHz)
Tuning grid	50kHz (FM); 9kHz/10kHz (AM)
Number of presets	40
FM	75ohm wire
AM	Loop antenna

Front speakers

Impedance	2 x 6ohm
Woofer	2 x 5.25"
Tweeter	2 x 1.75"
Dimensions (W x H x D)	225 x 430 x 275 (mm)
Weight	4.93kg each

Rear speakers

Impedance	3ohm
Speaker driver	4" + 4" (fake)
Frequency response	150Hz - 16kHz
Dimensions (W x H x D)	142.5 x 345 x 171.3 (mm)
Weight	2.1kg each

Subwoofer

AC power	110 - 127/220 - 240V; 50/60Hz
Power consumption	100W
Impedance	6ohm
Subwoofer driver	8"
Dimensions (W x H x D)	274 x 430 x 342.3 (mm)
Weight	11.2kg

General

AC power	110 - 127/220 - 240V; 50/60Hz, Switchable
Power consumption	
- Active	90W
- Standby	≤ 20W
USB direct	Version 2.0/1.1
Dimensions	
Main unit (W x H x D)	265 x 345 x 382 (mm)
Weight	8.67kg

USB playability information

Compatible USB devices:

- USB flash memory (USB 2.0 or USB 1.1)
- USB flash players (USB 2.0 or USB 1.1)
- memory cards (requires an additional card reader to work with this Mini Hi-Fi)

Supported formats:

- USB or memory file format FAT12, FAT16, FAT32 (sector size: 512 bytes)
- MP3 bit rate (data rate): 32-320 Kbps and variable bit rate
- WMA v9 or earlier
- Directory nesting up to a maximum of 8 levels
- Number of albums/ folders: maximum 99
- Number of tracks/titles: maximum 999
- ID3 tag v2.0 or later
- File name in Unicode UTF8 (maximum length: 128 bytes)

Unsupported formats:

- Empty albums: an empty album is an album that does not contain MP3/WMA files, and is not be shown in the display.
- Unsupported file formats are skipped. For example, Word documents (.doc) or MP3 files with extension .dlf are ignored and not played.
- AAC, WAV, PCM audio files

- DRM protected WMA files (.wav, .m4a, .m4p, .mp4, .aac)
- WMA files in Lossless format

Supported MP3 disc formats

- ISO9660, Joliet
- Maximum title number: 999 (depending on file name length)
- Maximum album number: 99
- Supported sampling frequencies: 32 kHz, 44.1kHz, 48 kHz
- Supported Bit-rates: 32-320 (kbps), variable bit rates
- ID3 tag v2.0 or later
- Directory nesting up to a maximum of 8 levels

Maintenance

Clean the cabinet

- Use a soft cloth slightly moistened with a mild detergent solution. Do not use a solution containing alcohol, spirits, ammonia or abrasives.

Clean discs

- When a disc becomes dirty, clean it with a cleaning cloth. Wipe the disc from the centre out.



- Do not use solvents such as benzene, thinner, commercially available cleaners, or antistatic spray intended for analogue records.

Clean the disc lens

- After prolonged use, dirt or dust may accumulate at the disc lens. To ensure good play quality, clean the disc lens with Philips CD lens cleaner or any commercially available cleaner. Follow the instructions supplied with cleaner.

12 Troubleshooting



Caution

- Never remove the casing of this Mini Hi-Fi.

To keep the warranty valid, never try to repair the system yourself.

If you encounter problems when using this Mini Hi-Fi, check the following points before requesting service. If the problem remains unsolved, go to the Philips web site (www.Philips.com/support). When you contact Philips, ensure that your Mini Hi-Fi is nearby and the model number and serial number are available.

No power

- Ensure that the AC power plug of the Mini Hi-Fi is connected properly.
- Ensure that there is power at the AC outlet.
- As a power-saving feature, the Mini Hi-Fi switches to standby automatically 15 minutes after disc/USB play reaches the end and no control is operated.

No sound or poor sound

- Adjust the volume.
- Check that the speakers are connected correctly.
- Check if the stripped speaker wires are clamped.

Left and right sound outputs reversed

- Check the speaker connections and location.

No response from the Mini Hi-Fi

- Disconnect and reconnect the AC power plug, then turn on the system again.

Remote control does not work

- Before you press any function button, first select the correct source with the remote control instead of the main unit.
- Reduce the distance between the remote control and the Mini Hi-Fi.

- Insert the batteries with their polarities (+/- signs) aligned as indicated.
- Replace the batteries.
- Aim the remote control directly at the sensor on the front of the Mini Hi-Fi.

No disc detected

- Insert a disc.
- Check if the disc is inserted upside down.
- Wait until the moisture condensation at the lens has cleared.
- Replace or clean the disc.
- Use a finalized CD or correct format disc.

Cannot display some files in USB device

- The number of folders or files in the USB device has exceeded a certain limit. This phenomenon is not a malfunction.
- The formats of these files are not supported.

USB device not supported

- The USB device is incompatible with the Mini Hi-Fi. Try another one.

Poor radio reception

- Increase the distance between the Mini Hi-Fi and your TV or VCR.
- If the signal is too weak, adjust the antenna or connect an external antenna for better reception.

Timer does not work

- Set the clock correctly.
- Switch on the timer.
- If you have set a record timer and an alarm time, only the latest timer is activated.

Clock/timer setting erased

- Power has been interrupted or the power cord has been disconnected.
- Reset the clock/timer.

Validez de la garantía

Todos los productos de la línea de audio y video Philips, se registrarán por un año de garantía internacional (365 días), salvo para Chile donde los productos de las líneas CD Portable y RCR CD, los cuales se rigen por 6 meses de garantía (182 días)

Condiciones de la garantía

Esta garantía perderá su validez si:

- El defecto es causado por uso incorrecto o en desacuerdo con el manual de instrucciones
- El aparato sea modificado, violado por una persona no autorizada por Philips
- El producto esté funcionando con un suministro de energía (red eléctrica, batería, etc.) de características diferentes a las recomendadas en el manual de instrucciones
- El número de serie que identifica el producto se encuentre de forma adulterada.

Están excluidos de garantía,

- Los defectos que se generen debido al incumplimiento del manual de instrucciones del producto
- Los casos fortuitos o de la fuerza mayor, como aquellos causados por agentes de la naturaleza y accidentes, descargas eléctricas, señales de transmisión débiles.
- Los defectos que se generen debido al uso de los productos en servicios no doméstico/residencial regulares o en desacuerdo con el uso recomendado
- Daños ocasionados por fluctuaciones de voltajes, voltaje fuera de norma o por causas fuera de Philips, como cortocircuitos en los bafles o parlantes.
- En las ciudades en donde no existe el taller autorizado del servicio de Philips, los costos del transporte del aparato y/o el técnico autorizado, corren por cuenta del cliente.
- La garantía no será válida si el producto necesita modificaciones o adaptaciones para que funcione en otro país que no es aquél para el cual fue mercadeado.

El único documento válido para hacer efectiva la garantía de los productos, es la Factura o Boleta de compra del consumidor final.

Aquellos productos que hayan sido adquiridos en otros países y que no estén en el rango normal del país donde se efectuará la reparación, dicha prestación de servicio tomará mas tiempo de lo normal ya que es necesario pedir las partes/piezas al centro de producción correspondiente.

Centros de información**Líneas de atención al consumidor**

Chile: 600-7445477

Colombia: 01-800-700-7445

Costa Rica: 0800-506-7445

Ecuador: 1-800-10-1045

El Salvador: 800-6024

Guatemala: 1-800-299-0007

Panamá: 800-8300

Peru: 0800-00100

Rep. Dominicana: 1-800-751-2673

Venezuela: 0800-100-4888

LISTA DE SERVIÇO AUTORIZADO - BRASIL

CRUIZEIRO DO SUL	68-33227216	BAIXO GUANDU	27-37321142	BELO HORIZONTE	31-32257262	BELEM	91-32353091
RIO BRANCO	68-33217642	BARRA DE SAO FRANCISCO	27-37562245	BELO HORIZONTE	31-32254066	BELEM	91-32542424
RIO BRANCO	68-33249116	CACHOEIRA DE ITAEMIRIM	28-35223524	BETIM	31-35322808	CAPANEMA	91-34621120
		COLAT NA	27-37222288	MDO DESPACHO	37-35222511	CASTANHAL	91-37215052
ALAGOAS		GUARAPARI	27-33614355	CARANGOLA	32-37412017	ITAITUBA	93-35181052
ARAPIRACA	82-35222367	SAO MATEUS	27-37633806	CARATINGA	33-33213433	MARABA	94-33211891
MACIO	82-32417237	SERRA	27-33284292	CASSIA	35-35412293	ORIXIMINA	93-35491068
PALMEIRA DOS INDIOS	82-34213452	VILA VELHA	27-32891123	CATAGUASES	32-34227986	PARAU OMINAS	91-30110778
UNIAO DOS PALMARES	82-38211305	VITORIA	27-32223899	CONGONHAS	31-37311638	PARAUPEBAS	94-33651756
				CONSELHEIRO LAFAIETE	31-37622001	SANTAREM	93-32523532
		GOIAS		CONTAGEM	31-33812994		
AMAZONAS		ANAPOLIS	62-33243562	CONTAGEM	31-33853461	PARAIBA	
MANAUS	92-36633366	CALDAS NOVAS	64-34652878	CORONEL FABRICIANO	31-38411804	CAMPINA GRANDE	83-33212123
MANAUS	92-33232452	CAT ALAO	64-34412786	CURVELO	38-37213009	ESPERANCA	83-36122728
		FORMOSA	61-63181166	DIVINOPOLIS	37-32212353	GUARABIRA	83-32711159
BAHA		GOIANESIA	62-33534967	FORMIGA	37-33214177	JOAO PESSOA	83-32469689
ALAGOINHAS	75-34211128	GOIANIA	62-32919095	FRUTAL	34-34235279	JOAO PESSOA	83-32404640
BARREIRAS	77-36117592	GOIANIA	62-32292908	GOVERNADOR VALADARES	33-32716650	JOAO PESSOA	83-32214046
CAETITE	77-34541183	GOIATUBA	64-34952014	GOVERNADOR VALADARES	33-32217250	NOVA FLORESTA	83-3741014
CAMACARI	71-36218288	GOIAPURANGA	62-33551484	GUAXUPE	35-35513891		
CRUZ DAS ALMAS	75-6212839	ITUMBIAARA	64-34310837	GUAXUPE	35-35514124	PARANA	
ESPLANADA	75-34271454	JATAI	64-36367458	IPATINGA	33-35212332	ASSIS CHATEAUBRIAND	44-35285818
EUNAPOLIS	73-32815181	LUZIANIA	61-36222519	ITABIRA	31-38316218	BANDEIRANTES	44-35421711
FEIRA DE SANTANA	75-33238282	MNEIROIS	64-36618259	ITAJUBA	35-36211315	CAMPO MOURAO	43-30612450
FEIRA DE SANTANA	75-32213427	PIRES DO RIO	64-34611133	ITAPERICIA	37-33411326	CASCAVEL	45-32254005
GUANAMBI	77-346512791	RUALMA	62-38713230	ITULINA	37-33212468	CIATARE	44-36232824
ILHEUS	73-32315596	RIO VERDE	64-36312034	JOAO MONLEVADE	31-38512900	CURITIBA	91-33334764
IRECÊ	74-36410202	TRINDADE	62-35051505	JOAO PINHEIRO	38-35611327	CURITIBA	91-33648749
ITABUNA	73-36137777	URUACU	62-33571285	JUIZ DE FORA	32-32151514	FOZ DO IGUAU	45-35234151
ITAPETINGA	77-32613003			LAGOA DA PRATA	37-32813493	FOZ DO IGUAU	45-36233029
JACOBINA	74-36271133	MARANHO		LAVRAS	35-38219188	IBIPORA	43-32581893
JEQUIE	73-35254141	ACAILANDIA	99-35381889	LAVRAS	35-38210550	IRATI	42-34221233
JUAZEIRO	74-36116446	ACAILANDIA	99-35381889	LAVRAS	37-34214344	LAPA	41-36221340
JUAZEIRO	74-36111002	BACABAL	99-36212794	MANHUAU	33-33414735	LONDRINA	43-33410242
LAURO DE FREITAS	71-33787401	CAXIAS	99-35212377	MONTI CARMELO	33-38422082	LONDRINA	43-33213820
MURITIBA	75-34241908	COELHO NETO	98-34731414	MONTI SANTO DE MINAS	35-35911888	MAL CANDIDIO RONDON	45-32542605
PAULO AFONSO	75-32811390	IMPERATRIZ	93-3216052	MONTES CLAROS	35-38218925	MANGA GUERU	44-22311335
RIBEIRA DO POMBAL	75-2761853	PEDREIRAS	99-36423142	MURIAE	32-37224334	MARINGA	44-32264620
SALVADOR	71-32473659	SAO JOSE DE RBAMAR	98-32241581	NANUQUE	33-36212165	MEDIANERA	45-32642580
SALVADOR	71-32077020	SAO LUIS	98-33223236	NOVA LIMA	31-35412026	PARANAAGUA	41-34252780
SALVADOR	71-3356233			OLIVEIRA	37-33314444	PATO BRANCO	46-32242786
SENHOR DO BONFIM	74-35413143			PARA DE MINAS	37-32316389	RIO NEGRO	47-36450251
SERRINHA	75-32811794	MATO GROSSO		PARACATU	38-36711250	ROLANDIA	43-2561947
STO ANTONIO JESUS	75-36314470	BARRA DO GARCAS	66-34011394	PASSOS	35-35214342	S MIGUEL DO IGUAU	45-56651429
TEIXEIRA DE FREITAS	73-30111600	CUIABA	65-33176464	PATOS DE MINAS	34-38222588	SAO JOSE DOS PINHAIS	41-32822522
VALENCA	75-36413710	LUCAS DO RIO VERDE	65-35491333	PATROCINIO	34-38311531	STO ANTONIO PLATINA	43-35341809
VITORIA DA CONQUISTA	77-34241183	PONTES E LACERDA	65-32662326	PUMHI	37-33711462	TELEMACO BOBIA	47-32726044
		PRIMAVEIRA DO LESTE	66-34981682	POCOS DE CALDAS	35-37121846	TOLEDO	45-35252471
		RONDONOPOLIS	66-34233888	POCOS DE CALDAS	35-37224444	UMUARAMA	44-30561485
		TANGARA DA SERRA	65-33261431	PONTE NOVA	31-38172486		
		VARZEA GRANDE	65-36826502	POU SO ALFRE	35-34212120	PERNAMBUCO	
CEARÁ		MATO GROSSO DO SUL		SEBASTIAO PARAISO	35-35313094	CABO SANTO AGOSTINHO	81-35211823
CRATEUS	88-36910019	AMAMBÁ	67-4811543	SAO JOAO DEL REI	32-33718306	CAMARAGIBE	81-34581246
FORTALEZA	85-32875505	CAMPO GRANDE	67-33242804	SETE LAGOAS	31-37718570	CARPINA	81-36211316
FORTALEZA	85-4008855	CAMPO GRANDE	67-33831540	SIFOLIO OTON	33-35225831	CARUARU	81-37222035
IGUATU	88-35810512	CAMPO GRANDE	67-33213898	TIETO	31-38482781	CURUPETA	81-37711274
ITAPIPOBA	88-36312030	DOURADOS	67-34217117	TRES CORACOES	35-32324143	PARANHUNS	87-37631005
JOIRAL	88-36110605	NOVA ANDRANINA	67-34413851	UBERABA	32-35323626	PAULISTA	81-34331142
SOBRAL	88-3306186	PONTE PORA	67-34314313	UBERLANDIA	34-33332520	RECIFE	81-32311399
TAUA	88-34371997	TRES LAGOAS	67-35420849	VARGINHA	34-32123636	RECIFE	81-34656042
TIANGUA	88-36711336			VARGINHA	35-32277889	RECIFE	81-34629090
UBAJARA	88-36341233			VARZEA DA PALMA	38-37311546	RECIFE	81-32862613
				VICOSA	31-38918000	SERRA TALHADA	87-38311401
DISTRITO FEDERAL		MINAS GERAS					
BRASILIA	61-35564840	ANDRADAS	35-37312970			PIAUÍ	
BRASILIA	61-33549615	ARAGUARI	34-32416026	ANANINDEUA	91-32354831	FLORIANO	89-35221154
BRASILIA	61-344511991	ARAXA	34-36611132	BELEM	91-32421090	PARNABA	86-3222787
		ARAXA	34-36691869	BELEM	91-32421090	PICOS	89-34155135
ESPÍRITO SANTO		ARCOS	37-33513455				
ALEGRE	28-35526349	BAMBUÍ	37-34311473				
ARACRUZ	27-32561251						

LISTA DE SERVIÇO AUTORIZADO - BRASIL

TERESINA	86-32230825	PORTO ALEGRE	51-32226941	SÃO PAULO	19-38241524	S BERNARDO CAMPO	11-41257000
TERESINA	86-32214618	PORTO ALEGRE	51-32356653	AGUAS DE LINDOIA	19-34062914	S BERNARDO CAMPO	11-43681788
RIO DE JANEIRO		PORTO ALEGRE	51-32268834	AMERICANA	19-38072674	S JOAO BOA VISTA	19-36232990
B JESUS ITABAPOANA	22-38312216	RIO GRANDE	53-32323211	AMPARO	18-36218775	S JOSE CAMPOS	12-39239508
BARRA DO PIRAI	24-24437745	SANTA CRUZ DO SUL	51-37153048	ARACATUBA	16-33368710	S JOSE DO RIO PARDO	19-36085760
BELFORD ROXO	21-27795797	SANTA MARIA	55-30282235	ARARAQUARA	18-33242649	SALTO	11-40296563
CABO FRIO	22-26451819	SANTA ROSA	55-35113449	ASSIS	11-44118145	SANTO ANDRE	11-49052888
CAMPOS GOYTACAZES	22-27221499	SÃO JOSE DO OURO	54-33521216	ATIBAIA	14-37322142	SANTOS	13-32272947
CORDEIRO	22-25512099	SAO LUIZ GONZAGA	55-33523215	AVARE	17-33222742	SANTOS	13-32847339
DUQUE DE CAXIAS	21-27711508	SOBRADINHO	51-37421409	BARRETOS	16-37614455	SAO CAETANO DO SUL	11-35654748
ITA GUAI	21-26886491	STA CRUZ DO SUL	51-37155456	BATAÍSA	14-31049551	SAO CARLOS	16-33612646
ITACARA	22-38612740	TAPEJARA	54-33442353	BAURU	18-36424011	SÃO JOSE DO RIO PRETO	17-32325680
ITAPERUNA	22-38220605	TAPERÁ	54-38511160	BIRIGUI	14-38821081	SAO PAULO	11-22964622
ITAPERUNA	22-38236825	TRES DE MAIO	55-35352101	BOTUCATU	14-38155044	SAO PAULO	11-29791184
MACAE	22-27591358	TRES DE MAIO	55-35358727	BOTUCATU	19-32369199	SAO PAULO	11-38659897
MAGE	21-26333342	URUGUAIANA	55-34118069	CAMPINAS	19-32336498	SAO PAULO	11-2215-6667
MITEROI	21-2622-0151	VACARIA	54-32311396	CAMPINAS	19-37372500	SAO PAULO	11-26940101
NOVA FRIBURGO	22-25227632	VENANCIO AIRES	51-37411443	CAMPINAS	12-36622142	SAO PAULO	11-32077111
PETROPOLIS	24-22454937	VERA CRUZ	51-37181350	CAMPOS DO JORDAO	17-35232524	SAO PAULO	11-39757996
RESENDE	24-243550101	RONDÔNIA		CATANDUVA	15-32842121	SAO PAULO	11-22976464
RIO DE JANEIRO	21-24264702	ARQUEMÉS		CERQUILHO	12-31433859	SAO PAULO	11-56679656
RIO DE JANEIRO	21-25892030	BURITIS	69-35353491	CRUZEIRO	11-40430669	SAO PAULO	11-38751333
RIO DE JANEIRO	21-25096851	CACAO	69-32983830	DIADEMA	18-38212479	SAO PAULO	11-38457575
RIO DE JANEIRO	21-24315759	GLAJARA-MIRIM	69-34431415	DRACENA	17-34423752	SAO PAULO	11-2296-6122
RIO DE JANEIRO	21-22566260	JARU	69-35414430	FERNANDOPOLIS	16-37223898	SAO PAULO	11-62809411
RIO DE JANEIRO	21-31592187	PIMENTA BUENO	69-35211584	FRANCA	11-44492608	SAO PAULO	11-20713907
RIO DE JANEIRO	21-25714999	PORTO VELHO	69-34512934	FRANCO DA ROCHA	12-31335030	SAO PAULO	11-37714709
RIO DE JANEIRO	21-3381-0771	RORAMA		GUARATINGUETÁ	13-33682942	SAO PAULO	11-25770899
SAO GONCALO	21-270113214	BOA VISTA	95-32249605	GUARULHOS	11-64431153	SAO PAULO	11-32222311
TERESOPOLIS	24-27349467	SANTA CATARINA		IBITINGA	16-31724600	SAO PAULO	11-47125635
TRES RIOS	24-22521388	ARARANGUA	48-35220304	IGARAPAVA	19-38753831	SAO VICENTE	13-34646559
VOLTA REDONDA	24-33481601	BALNEARIO CAMBORIU	47-3363 0706	INDAIATUBA	15-32710936	SOROCABA	15-32241170
RIO GRANDE DO NORTE		BLUMENAU	47-33227742	ITAPETINGA	19-38833802	SUZANO	11-47598671
CAICO	84-4171844	BRUSQUE	47-33557518	ITAPIRA	16-32822524	TABOAO DA SERRA	11-47871480
NATAL	84-32231249	CANOINHAS	47-36223615	ITAPOLIS	11-4604162	TACUARATINGA	16-32524039
NATAL	84-32132345	CAPINZAL	49-35552266	ITUAQUAQUECETUBA	15-35322743	TAUBATE	12-36219800
PAU DOS FERROS	84-3351.2334	CHAPECO	49-33223304	ITARARE	11-40230188	TUPA	14-34962596
RIO GRANDE DO SUL		CHAPECO	49-33221144	ITU	16-37293365	VALINHOS	19-38716629
BAGE	53-32411295	CONCORDIA	49-3442 3704	ITUVERAVA	16-32021580	SERGIPE	
BENTO GONCALVES	54-34526825	CRIGUAMA	48-21015555	JABOTICABAL		ARACAUJ	79-32119764
CAMPINAS DO SUL	54-3661300	CUNHA PORÁ	49-6460043	JALES	17-36324479	ARACAUJ	79-32176080
CANELA	54-32821551	CURITIBANOS	49-32410851	JAU	14-36222117	ESTANCIA	59-5222325
CARAZINHO	54-33022292	FLORIANO POLIS	48-3204-9700	JUNDIAI	11-45862182	ITABAIANA	79-34313023
CAXIAS DO SUL	54-30211808	GAROPABA	48-3254.4104	LEME	19-35713528	LAGARTO	79-36312656
DOIS IRMAOS	51-35641286	INDAIAL	47-33333275	LIMEIRA	19-34413179	TOCANTINS	
ERECIM	54-33211933	IPORA DO OESTE	49-36341289	LINS	14-35227283	ARAGUAINA	63-34141811
ESTANCIA VELHA	51-35612142	ITAJAI	47-33444777	MARILIA	14-34547437	ARAGUAINA	63-34111818
FARROUPILHA	54-32683603	JARAGUA DO SUL	47-33722050	MATAO	16-33821046	GUARAI	63-34641590
FAXINAL DO SOTURNO	55-32631150	JOACABA	49-35220418	MAJUA	11-45145233	GURUPI	63-33611038
FLORES DA CUNHA	54-32922625	JOINVILLE	47-34331146	MOGI DAS CRUZES	11-47941814	PALMAS	63-32175628
FREDERICO WESTPHALEN	55-37441850	LAGES	49-32244414	MOGI-MIRIM	19-38624401		
GRAVATAI	51-30422830	LAGUNA	48-36443153	MOJI-GUACU	19-38181171		
HORIZONTINA	55-35371680	LAURO MULLER	48-4643202	OLIMPIA	17-32805378		
IBIRAIARAS	54-33551359	MARAVILHA	49-36640052	OSASCO	11-36837343		
IJUI	55-33327766	PINHALZINHO	49-33661014	OURINHOS	14-33225457		
IMBE	51-36272704	PORTO UNIAO	42-35232839	PIRACICABA	19-34304054		
LAJEADO	51-37145155	RIO DO SUL	47-35211920	PIRACICABA	19-35812441		
MARAU	54-33424571	RIO NEGRINHO	47-36440979	PIRASSUNUNGA	19-35851891		
MONTENEGRO	51-36324187	SÃO MIGUEL D'OESTE	49-36220025	PORTO FERREIRA	18-32225168		
NONOAI	54-36211226	TUBARAO	48-36261651	PORTO FERREIRA	14-35411696		
NOVA PRATA	54-32421328	TUBARAO	48-36224448	PRES PRUDENTE	13-38212324		
NOVO HAMBURGO	51-35823191	VIDEIRA	49-35660376	PROMISSAO	16-36368156		
OSORIO	51-36632524	XANXERE	49-34333026	REGISTRO	16-36107553		
PASSO FUNDO	54-33111104			RIBEIRAO PRETO	19-35348543		
PELOTAS	53-32223633			RIBEIRAO PRETO	18-32881469		
				RIO CLARO			
				ROSAIRA			

CERTIFICADO DE GARANTIA NO BRASIL

Este aparelho é garantido pela Philips da Amazônia Indústria Eletrônica Ltda., por um período superior ao estabelecido por lei. Porém, para que a garantia tenha validade, é imprescindível que, além deste certificado, seja apresentada a nota fiscal de compra do produto.

A Philips da Amazônia Indústria Eletrônica Ltda., assegura ao proprietário consumidor deste aparelho as seguintes garantias, a partir da data de entrega do produto, conforme expresso na nota fiscal de compra, que passa a fazer parte deste certificado:

Garantia para rádios e reprodutores de CD portáteis

(sem caixa acústica destacável): 180 dias

Garantia para os demais produtos da marca Philips: 365 dias.

Esta garantia perderá sua validade se:

- O defeito apresentado for ocasionado pelo uso indevido ou em desacordo com o seu manual de instruções.
- O produto for alterado, violado ou consertado por pessoa não autorizada pela Philips.
- O produto for ligado a fonte de energia (rede elétrica, pilhas, bateria, etc.) de características diferentes das recomendadas no manual de instruções e/ou no produto.
- O número de série que identifica o produto estiver de alguma forma adulterado ou rasurado.

Estão excluídos desta garantia defeitos decorrentes do descumprimento do manual de instruções do produto, de casos fortuitos ou de força maior; bem como aqueles causados por agentes da natureza e acidentes. Excluem-se igualmente desta garantia defeitos decorrentes do uso dos produtos em serviços não doméstico/residencial regular ou em desacordo com o uso recomendado.

ESTÃO EXCLUÍDAS DA GARANTIA ADICIONAL AS PILHAS OU BATERIAS FORNECIDAS JUNTO COM O CONTROLE REMOTO.

Nos municípios onde não exista oficina autorizada de serviço Philips, as despesas de transporte do aparelho e/ou do técnico autorizado, correm por conta do Sr. Consumidor requerente do serviço. A garantia não será válida se o produto necessitar de modificações ou adaptações para habilitá-lo a operar em qualquer outro país que não aquele para o qual foi designado, fabricado, aprovado e/ou autorizado, ou ter sofrido qualquer dano decorrente deste tipo de modificação.

Philips da Amazônia Indústria Eletrônica Ltda.

Dentro do Brasil, para informações adicionais sobre o produto ou para eventual necessidade de utilização da rede de oficinas autorizadas, ligue para o Centro de Informações ao Consumidor (CIC). Em São Paulo - Capital e demais localidades com DDD 011 - tel. 2121-0203, nas demais localidades e estados - tel. 0800 701 02 03 (discagem direta gratuita), ou escreva para Caixa Postal: n 21.315 - CEP04602-970 - São Paulo - SP, ou envie um e-mail para: cic@philips.com.br

Horário de atendimento: de segunda à sexta-feira, das 08:00 às 20:00h; aos sábados das 08:00 às 13:00h.

***Para atendimento fora do Brasil, contate a Philips local ou a: Philips Consumer Service
Beukenlaan 2 - 5651 CD Eindhoven The Netherlands***

Certificado de Garantía en Argentina

Artefacto:

Modelo:

Fabricante/Importador: Philips Argentina S.A.

y/o Fábrica Austral de Productos Eléctricos S.A.

Dirección: Vedia 3892 - Buenos Aires

Fecha de Venta:

Nro. de serie

Firma y sello de la casa vendedora.

PHILIPS ARGENTINA S.A. en adelante denominada “la empresa”, garantiza al comprador de este artefacto por el término de (6) meses a partir de la fecha de adquisición, el normal funcionamiento contra cualquier defecto de fabricación y/o vicio de material, y se compromete a reparar el mismo —sin cargo alguno para el adquirente— cuando el mismo fallare en situaciones normales de uso y bajo las condiciones que a continuación se detallan:

1. Este certificado de garantía es válido únicamente en la Republica Argentina. El certificado debe ser completado por la casa vendedora y ser presentado por el usuario conjuntamente con la factura original de compra.
2. Serán causas de anulación de esta garantía en los casos que corresponda:
 - 2.1. Uso impropio o distinto del uso doméstico.
 - 2.2. Exceso o caídas de tensión eléctrica que impliquen uso en condiciones anormales.
 - 2.3. Instalación y/o uso en condiciones distintas a las marcadas en el “Manual de instalación y uso” que se adjunta a esta garantía.
 - 2.4. Cualquier intervención al artefacto por terceros no autorizados por la empresa.
3. La garantía carecerá de validez si se observare lo siguiente:
 - 3.1. Enmiendas o raspaduras en los datos del certificado de garantía o factura.
 - 3.2. Falta de factura original de compra que detalle tipo de artefacto, modelo, número de serie y fecha que coincida con los del encabezamiento del presente certificado.
4. No están cubiertos por esta garantía los siguientes casos:
 - 4.1. Los daños ocasionados al exterior del gabinete.
 - 4.2. Las roturas, golpes, caídas o rayaduras causadas por traslados.
 - 4.3. Los daños o fallas ocasionados por deficiencias, sobretensiones, descargas o interrupciones del circuito de alimentación eléctrica o rayos, deficiencias en la instalación eléctrica del domicilio del usuario o conexión del artefacto a redes que no sean las especificadas en el Manual de Uso del mismo.
 - 4.4. Las fallas, daños, roturas o desgastes producidos por el maltrato o uso indebido del artefacto y/o causadas por inundaciones, incendios, terremotos, tormentas eléctricas, golpes o accidentes de cualquier naturaleza.
 - 4.5. Las fallas o daños ocasionados en desperfectos en la línea telefónica.
 - 4.6. Las fallas producidas por una mala recepción ocasionada en el uso de una antena deficiente o en señales de transmisión débiles.
5. Las condiciones de instalación y uso del artefacto se encuentran detalladas en el Manual de Uso del mismo.
6. La empresa no asume responsabilidad alguna por los daños personales o a la propiedad al usuario o a terceros que pudieran causar la mala instalación o uso indebido del artefacto, incluyendo en este último caso a la falta de mantenimiento.
7. En caso de falla, el usuario deberá requerir la reparación a la empresa a través del Service Oficial y/o Talleres Autorizados más próximos a su domicilio y cuyo listado se acompaña al presente. La empresa a segura al usuario la reparación y/o reposición de piezas para su correcto funcionamiento en un plazo no mayor a 30 días contados a partir de la fecha de solicitud de reparación, salvo caso fortuito o fuerza mayor.

8. Toda intervención del servicio técnico realizada a pedido del usuario dentro del plazo de garantía, que no fuera originada por falla o defecto alguno cubierto por este certificado, deberá ser abonado por el interesado de acuerdo a la tarifa vigente.
9. El presente certificado anula cualquier otra garantía implícita o explícita, por la cual y expresamente no autorizamos a ninguna otra persona, sociedad o asociación a asumir por nuestra cuenta ninguna responsabilidad con respecto a nuestros productos.
10. En caso de que durante el período de vigencia de esta garantía el artefacto deba ser trasladado a las Delegaciones Oficiales y/o Talleres Autorizados de Service para su reparación, el transporte será realizado por la empresa y serán a su cargo los gastos de flete y seguros y cualquier otro que deba realizarse para su ejecución.



PHILIPS

Red de Talleres Autorizados en Argentina

CAPITAL FEDERAL

ATTENDANCE S.A.

- Av. Monroe 3351 (C1430BKA) Cap. Fed.
- Tel.: 4545-5574/0704 ó 6775-1300
- Ventas de Repuestos y Accesorios
- Tel.: 4545-0854

DIG TRONIC

- Av. San Martín 1762 (C1416CRS) Cap. Fed.
- Tel.: 4583-1501

ELECTARG S.R.L.

- Av. Córdoba 1357 (C1055AAD) Cap. Fed.
- Ventas de Repuestos y Accesorios
- Tel.: 4811-1050

San Nicolás	Servitec	Bv. Alvarez 148	(03461) 454729/429578
San Pedro	Electrónica Menisale	Mitre 1695	(03329) 425523
Tandil	Lazzarini Oscar Rafael	Pellegrini 524	(02293) 442167
Trenque Lauquen	Labruna Electrónica	Av. San Martín 426	(02392) 423248
Tres Arroyos	Saini Fabián y Sergio	Av. Belgrano 562	(02983) 427369
Zárate	Electrónica Spinozzi	Ituzaingó 1030	(03487) 427353

GRAN BUENOS AIRES

Avellaneda	Casa Torres S.A.	Av. Mitre 2559	4255-5854
Florencio Varela	Casa Torres S.A.	San Martín 2574	4255-5854
Gregorio de Laferrere	Electrónica Alvarez	Honorio Luque 6084	4626-1322
Lomas de Zamora	Attendance S.A. Lomas	Laprida 485	4292-8900
Merlo	Argentónica S.H.	Pte. Cámpora 2175	(0220) 4837177/4829934
Moreno	Argentónica S.H.	Bm. Mitre 2977 loc.2	(0237) 4639500
Morón	Servotronic	Ntra. Sra. del Buen Viaje 1222	4627-5656
Olivos	Appliance	Av. Libertador 2684	4794-7700
Quilmes	Casa Torres S.A.	E. Ríos esq. Gran Canaria	4255-5854
Ramos Mejía	Electarg S.R.L. Suc.	Belgrano 224	4656-0619
San Miguel	Servotronic San Miguel	Belgrano 999	4664-4131
Villa Ballester	Servotronic	J. Hernández 3101	4767-2515/4768-5249

CATAMARCA

Catamarca	Omicron Central de Serv.	San Martín 225	(03833) 427235
-----------	--------------------------	----------------	----------------

CHACO

Resistencia	Freschi Jorge Oscar	Av. Avalos 320	(03722) 426030
-------------	---------------------	----------------	----------------

CHUBUT

Comodoro Rivadavia	C.A.S. S.R.L.	Alem 145	(0297) 4442629
Trelew	Fagtron Electrónica	Brasil 253	(02965) 427073

CORDOBA

Córdoba Capital	Servelco S.R.L.	Pje. E. Marsilla 635	(0351) 4724008/4732024
Río Cuarto	Maurutto Victor G.	Bv. Almaguer 487	(0358) 4660204
Río Cuarto	Capaldi Abel	Paunero 832	(0358) 4623003
Río Tercero	Service Omega	Homero Manzi 149	(03571) 423330
San Francisco	Acuña Walter Electrónica	M. Moreno 360	(03564) 425367
Villa María	Grasso Electrónica	Bv. Alvear 541	(0353) 4521366
Villa María	Vanguard Sist. Electrónicos	México 421	(0353) 4532951

Caballito Electarg J. M. Moreno 287 4903-6967/6854/8983

BUENOS AIRES

Azul	Herlein Raúl Horacio	Av. 25 de Mayo 1227	(02281) 428719
Bahía Blanca	Neutron	Soler 535	(0291) 4535329
Bragado	Yacovino Juan J.	San Martín 2141	(02342) 424147
Campana	Electricidad Krautour	Lavalle 415	(03489) 432919
Chivilcoy	Fama	Coronel Suárez 110	(02346) 424129
Junín	Junín Service	Alsina 537	(02362) 442754
La Plata	Da Tos e Hijos	Calde 68 N° 1532	(0221) 4516021
La Plata	Service Técnico La Plata	Av. 51 N° 1051 esq. 16	(0221) 4108155
Mar de Ajó	Tauro Electrónica	Catamarca 14	(02257) 421750
Mar del Plata	Central Service	Olazábal 2249	(0223) 4721639/4729367
Mar del Plata	Service Integral	Diag. Pueyrredón 3229	(0223) 4945633
Necochea	Electrónica Camejo	Calle 63 N° 1745	(02262) 426134
Pehuajó	Calcagni Carlos Alberto	Zubiria 794	(02396) 472665
Pergamino	ACV Sistemas	Dr. Alem 758	(02477) 421177
Pergamino	El Service	Juan B. Justo 1931	(02477) 418000

