

Register your product and get support at  
[www.philips.com/welcome](http://www.philips.com/welcome)

**Immersive**

5000 series



# Quick start guide

**PHILIPS**



**EN** Before using your product, read all accompanying safety information

**ES** Antes de usar el producto, consulte la información de seguridad que se encuentra adjunta

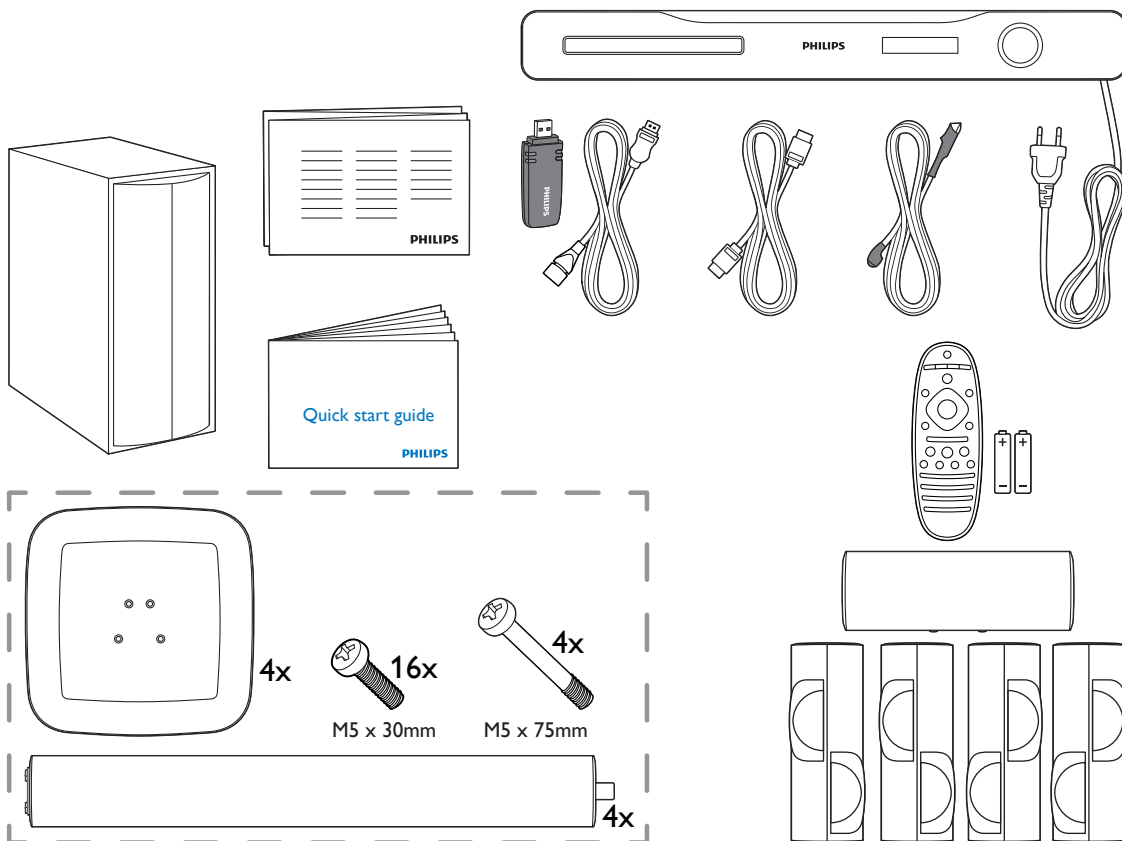
**PT** Antes de usar o produto, leia todas as informações de segurança em anexo



**EN** What's in the box

**ES** Contenido de la caja

**PT** Conteúdo da embalagem



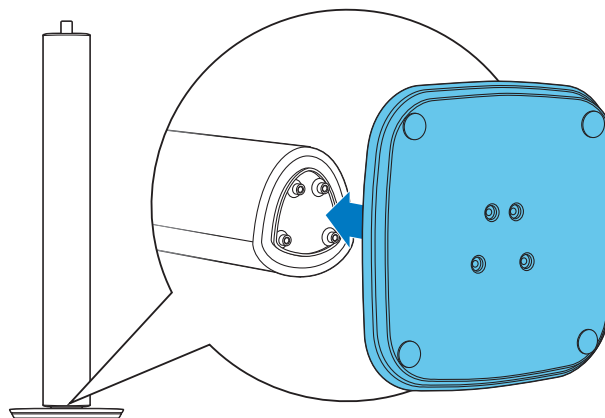


**EN** Stand mount the speakers

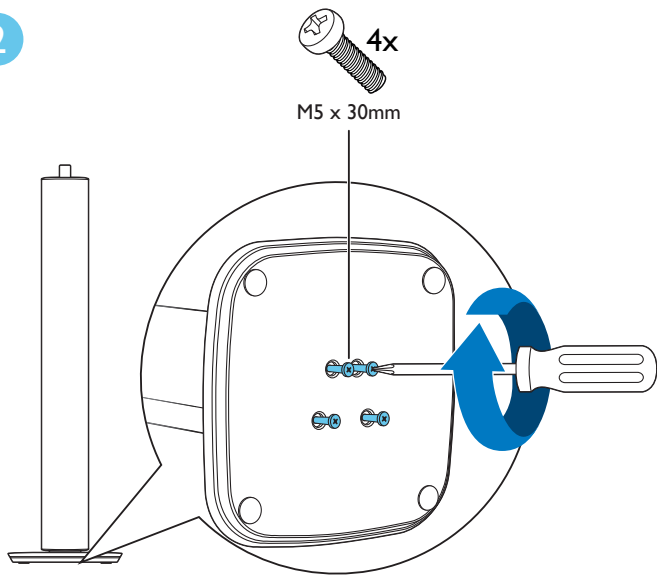
**ES** Contenido de la caja

**PT** Montar as caixas acústicas

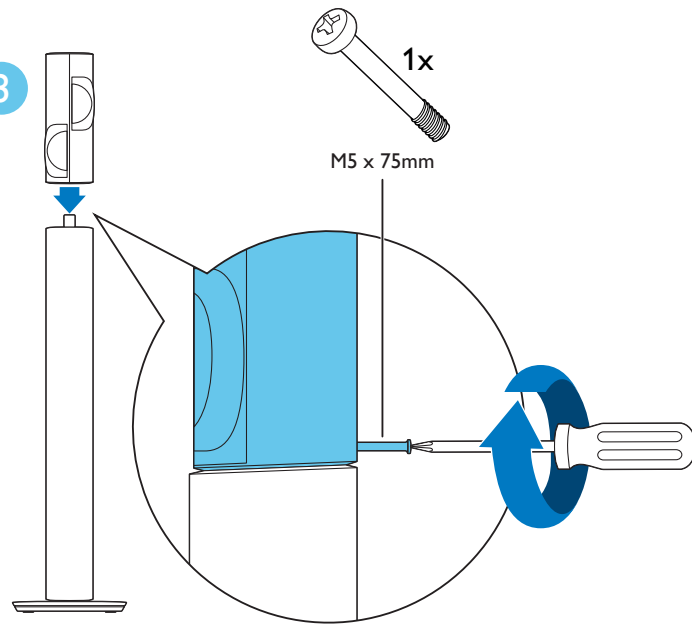
1



2

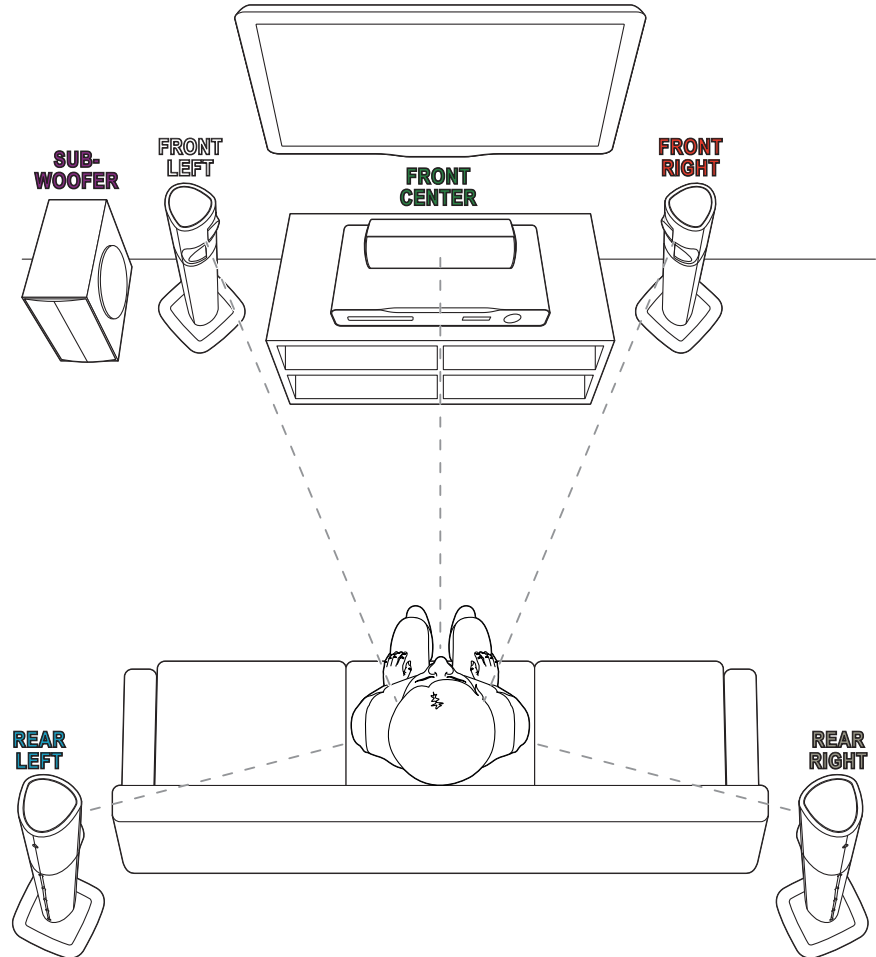


3



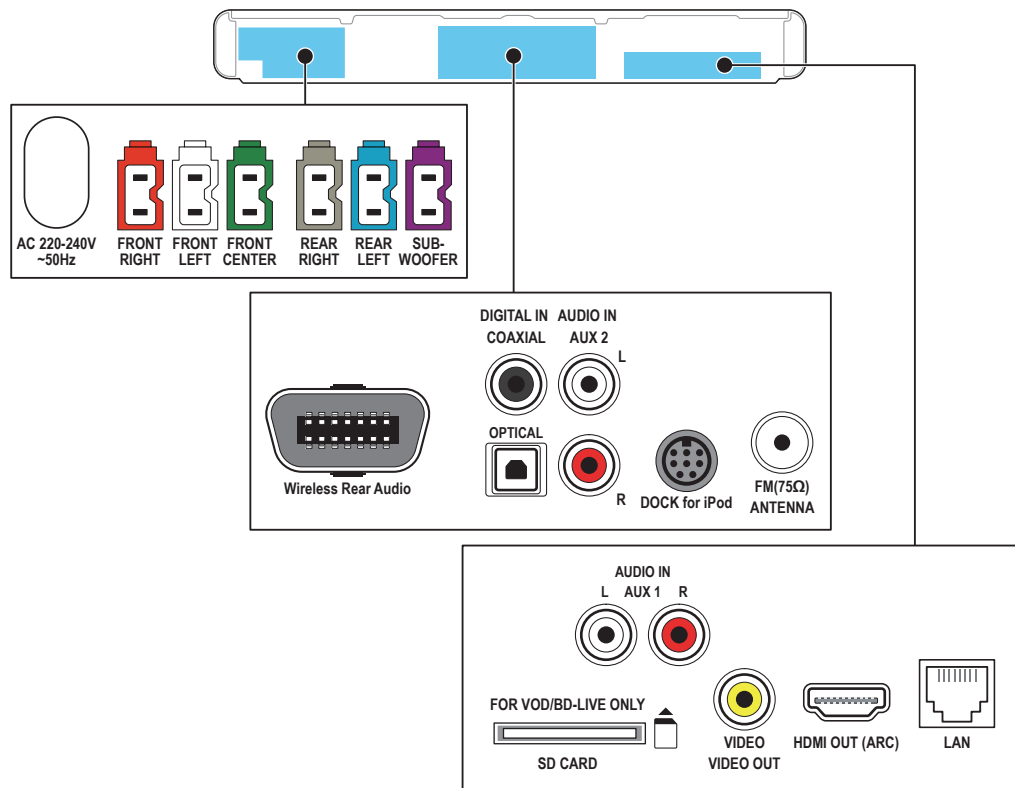
# 2

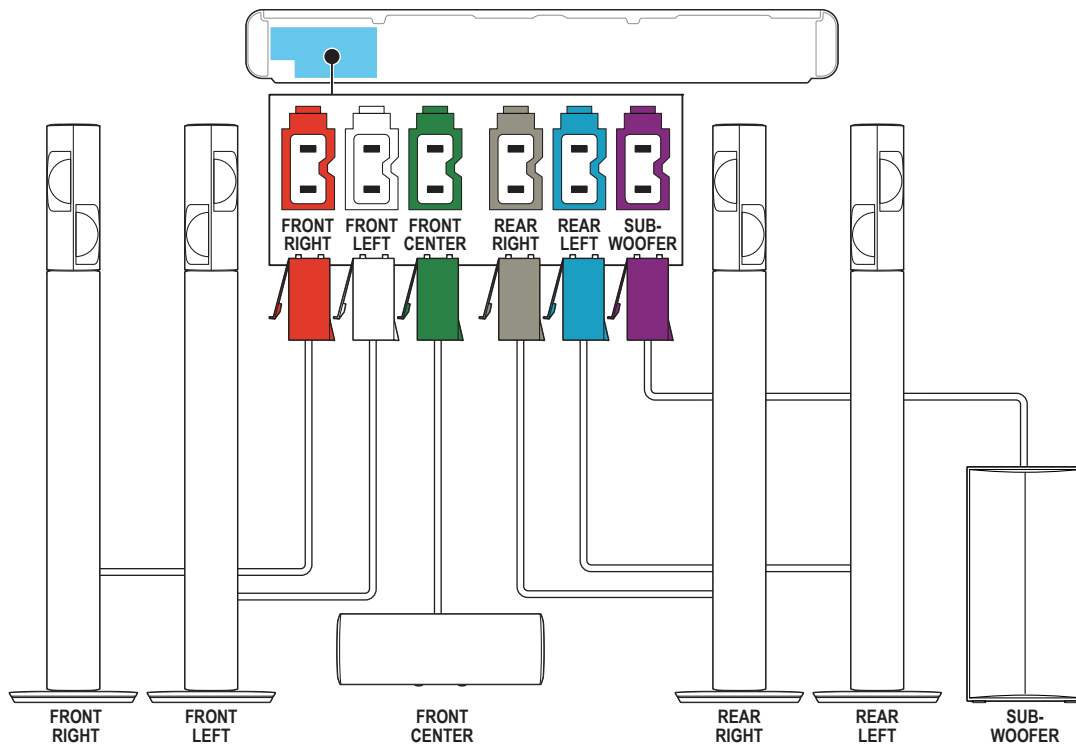
- EN Position the speakers
- ES Ubicación de los altavoces
- PT Posicionar as caixas acústicas



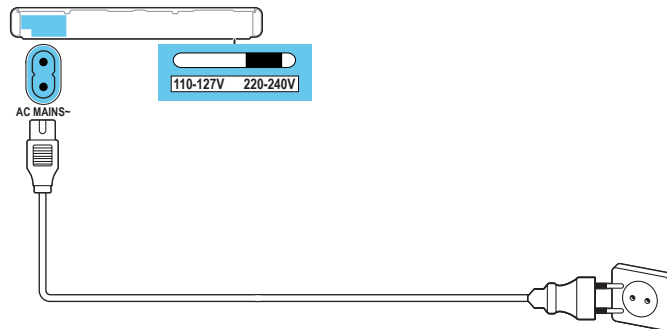
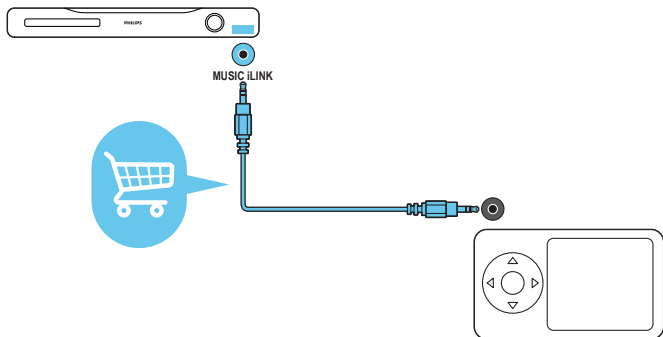
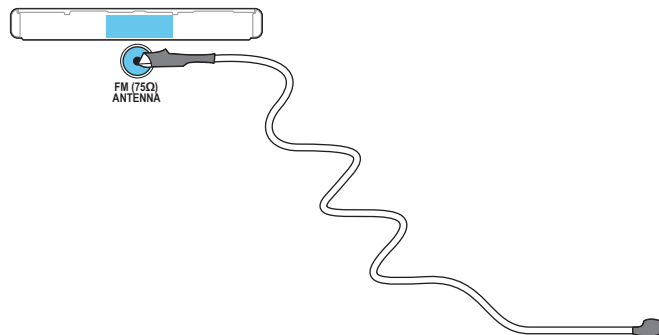
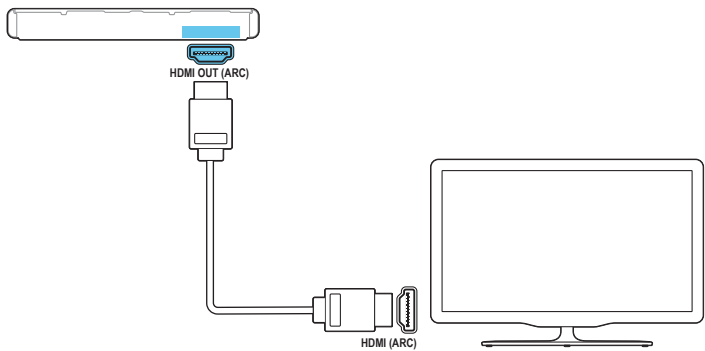
# 3

- EN** Connect the home theater
- ES** Conexión del Home Theater
- PT** Conectar o Home Theater





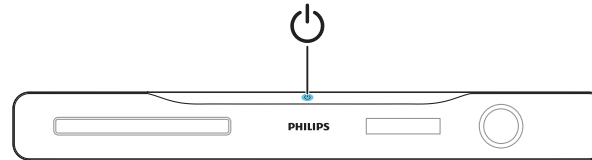




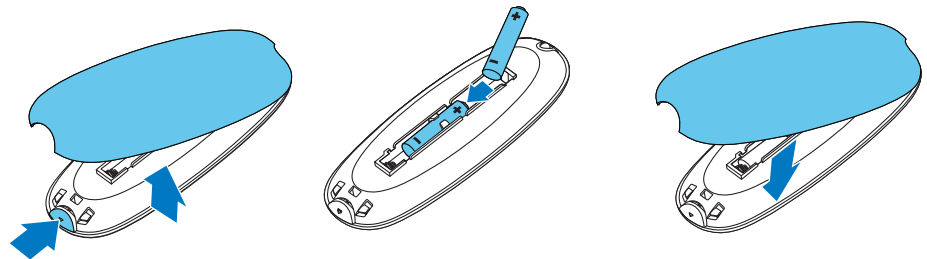
# 4

**EN** Switch on the home theater  
**ES** Encendido del Home Theater  
**PT** Ligar o Home Theater

1



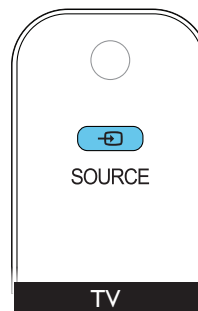
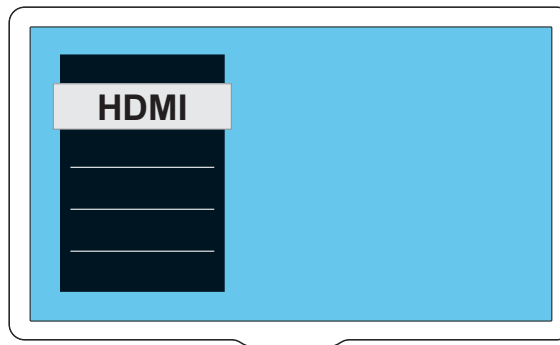
2





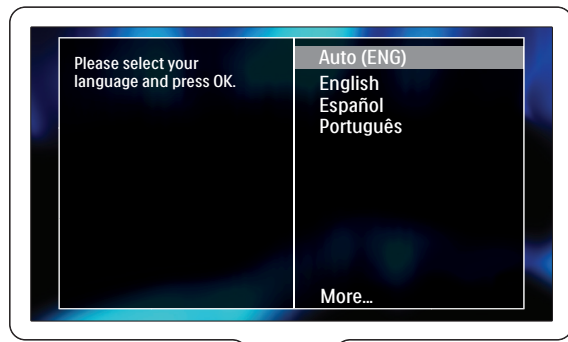
- EN** Complete the first time setup
- ES** Proceso de configuración inicial
- PT** Fazer a configuração inicial

1

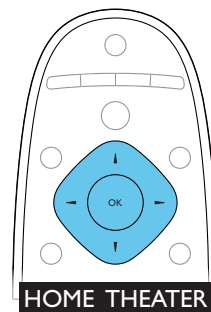
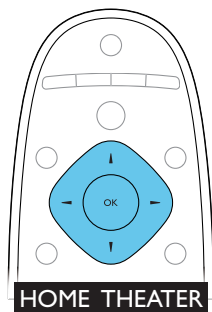
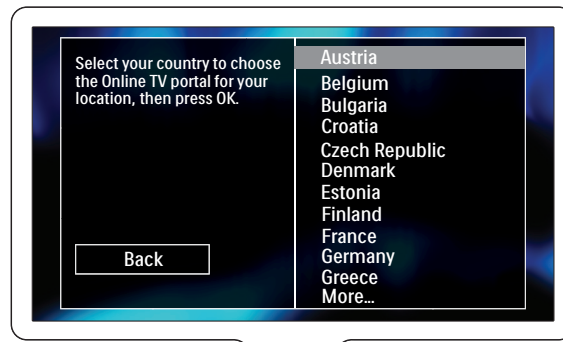




2



3

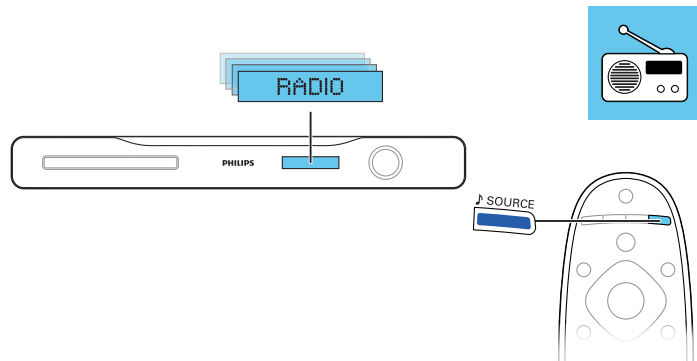
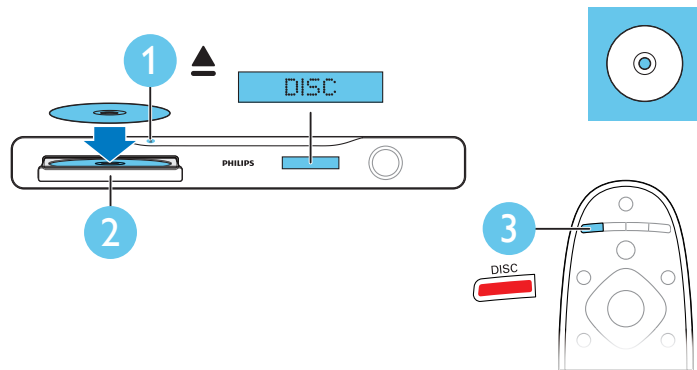


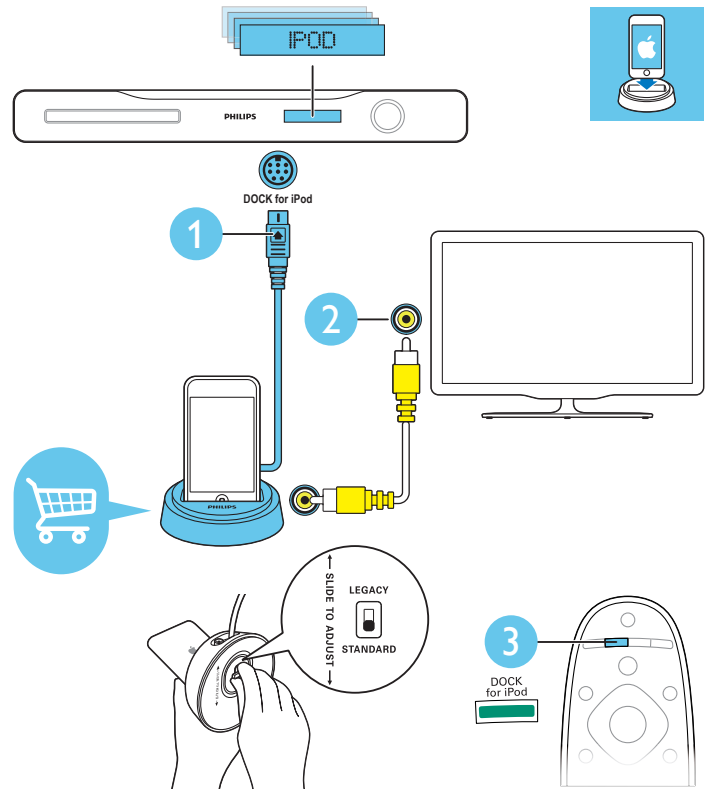
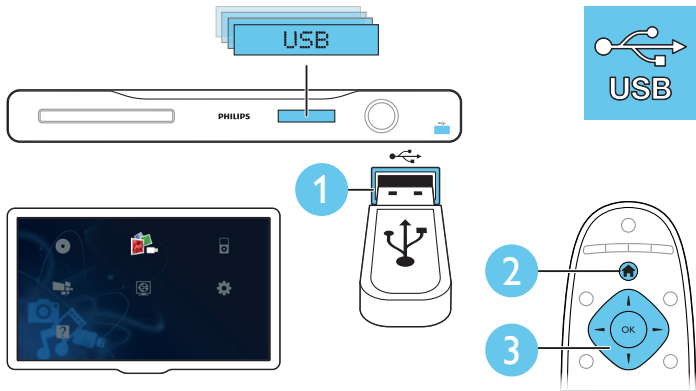
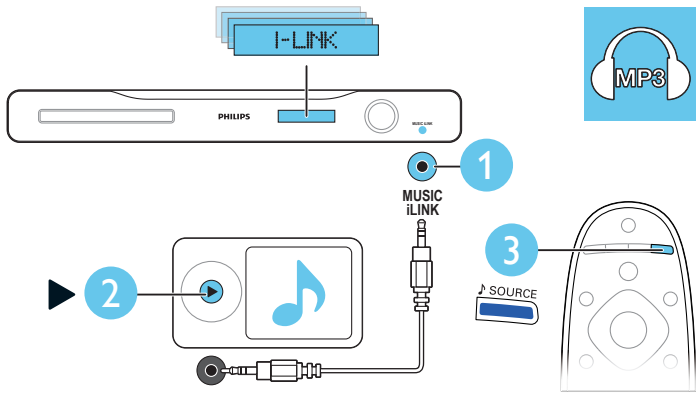
# 6

**EN** Use your home theater

**ES** Uso del sistema de Home Theater

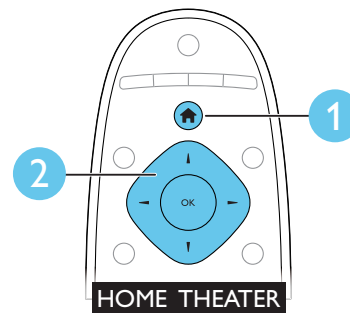
**PT** Usar o Home Theater







- EN** Need more information about your product? Search the onscreen help.
- ES** ¿Necesita más información acerca de este producto? Revise la ayuda en pantalla.
- PT** Precisa de mais informações sobre o seu produto? Faça uma busca na tela de ajuda.





- EN** For sustainability, the user manual is not printed and available in your product as onscreen help. A printable user manual as well as product updates is available from [www.philips.com/support](http://www.philips.com/support).
- ES** Por motivos de sustentabilidad este manual no se ha impreso, y se encuentra disponible en la ayuda en pantalla de su producto. En [www.philips.com/support](http://www.philips.com/support) puede encontrar un manual para imprimir, además de las actualizaciones para este producto.
- PT** Para fins de sustentabilidade, o manual do usuário não é impresso e não está disponível no seu produto como ajuda na tela. O manual do usuário como também as atualizações do produto estão disponíveis no [www.philips.com/support](http://www.philips.com/support).



[www.philips.com/support](http://www.philips.com/support)



Non-contractual images. / Images non contractuelles. / Außervertragliche Bilder:

All registered and unregistered trademarks are property of their respective owners.

Specifications are subject to change without notice.

Trademarks are the property of Koninklijke Philips Electronics N.V. or their respective owners  
2011 © Koninklijke Philips Electronics N.V. All rights reserved

[www.philips.com](http://www.philips.com)  
ythy\_1113/78\_v1

Evite o uso prolongado do aparelho com volume superior a 85 decibéis, pois isto poderá prejudicar a sua audição.  
Potência total de saída de 800W RMS, 10% THD

