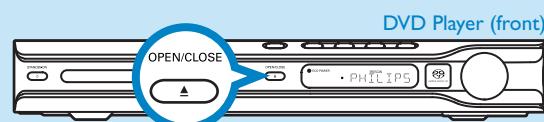


Play DVD

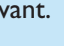
1 Press **OPEN/CLOSE**  on the front of the DVD system to open the disc tray.




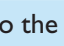
2 Place DVD in tray with the label facing up.

3 Press **OPEN/CLOSE**  again.

4 Press **UP** , **DOWN** , **RIGHT**  or **LEFT**  to scroll through the options in the DVD menu.

5 Press **PLAY**  on the option you want.

6 To stop press **STOP** .

Tip Press **PLAY**  to resume from where you stopped or press **STOP**  and **PLAY**  to start from the beginning of the title.

7 Press **DISC MENU**  to go back to the DVD menu.

Listen to Radio

1 Press **TUNER** .

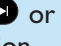
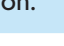
Front display

AUTO INSTALL PRESS PLAY


2 Press and hold **PLAY**  until 'START' appears.


Tip This feature is only available for first time setup, refer to user manual if you wish to program radio stations again or for manual programming.



3 Once completed you can use **NEXT**  or **PREVIOUS**  to select a radio station.

Experience Surround Sound

1 Press **SURR**  to switch between Stereo and Multi-channel.

2 Press **SOUND**  for either Concert, Drama, Action or Sci-fi preset digital sound effects.

Troubleshooting

For more troubleshooting tips, see the user manual.

Problem

No power

Tip

- Check if the AC power cord is properly connected.
- Press the STANDBY-ON on the front of the DVD system to turn on the power.

No picture

- Press DISC on remote control.
- Check connection to TV and ensure the plugs are firmly in place.

No sound or distorted sound

- Adjust the volume.
- Check the speaker connections and settings.
- Check audio connections and press SOURCE button to select the correct input source.

Remote control does not work

- Check that the batteries are loaded correctly or replace the batteries with new ones.
- Select the source (DISC or TUNER, for example) before pressing the function button.
- Reduce the distance between the remote control and the system.
- Point the remote control directly toward the IR sensor.

Need help?

User Manual

For more product information refer to the user manual of the home theatre system.

Online

Go to www.philips.com/support



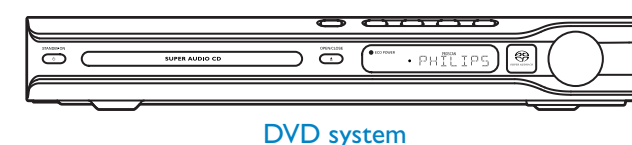
2005 © Koninklijke Philips N.V.
All rights reserved.
12 NC 31 39 115 16351
www.philips.com

Quick Start Guide

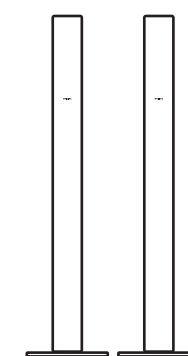


- 1 Connect
- 2 Setup
- 3 Enjoy

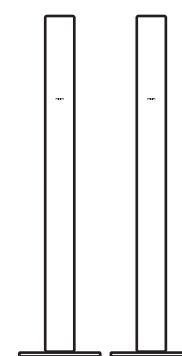
What's in the Box



DVD system



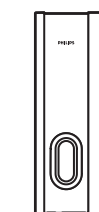
Front speakers
(left & right)



Rear speakers
(left & right)



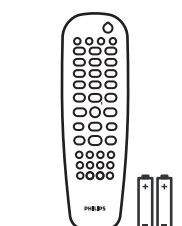
Centre speaker



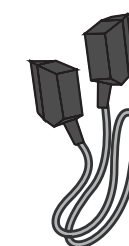
Subwoofer



Quick start guide



Remote control
and 2 batteries



Scart cable
(black plug)



AM/MW
loop antenna



User manual



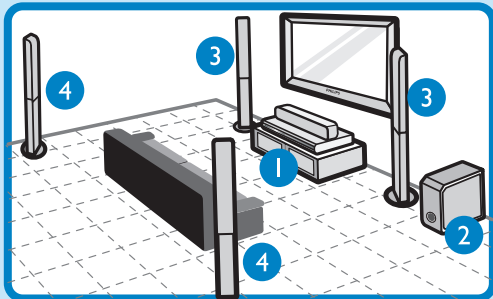
FM wire antenna

PHILIPS

1 Connect

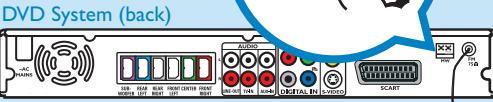
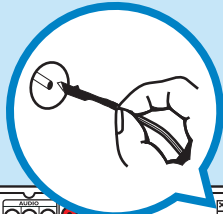
A Position Speakers & Subwoofer

- 1 Place centre speaker on or close to the TV.
- 2 Place subwoofer on the floor.
- 3 Place front speakers equal distance from the TV and angle them 45 degree to the listener.
- 4 Place rear speakers facing the listener, equal distance on the left and right.

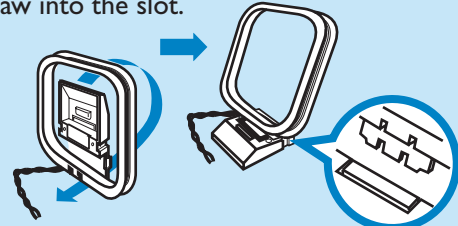


B Fix Antennas

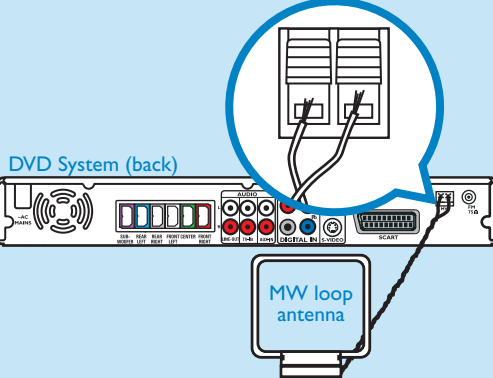
- 1 Connect the FM antenna to the FM socket, extend the antenna and fix it on the wall.



- 2 Unfold the AM/ MW loop antenna and fix the claw into the slot.

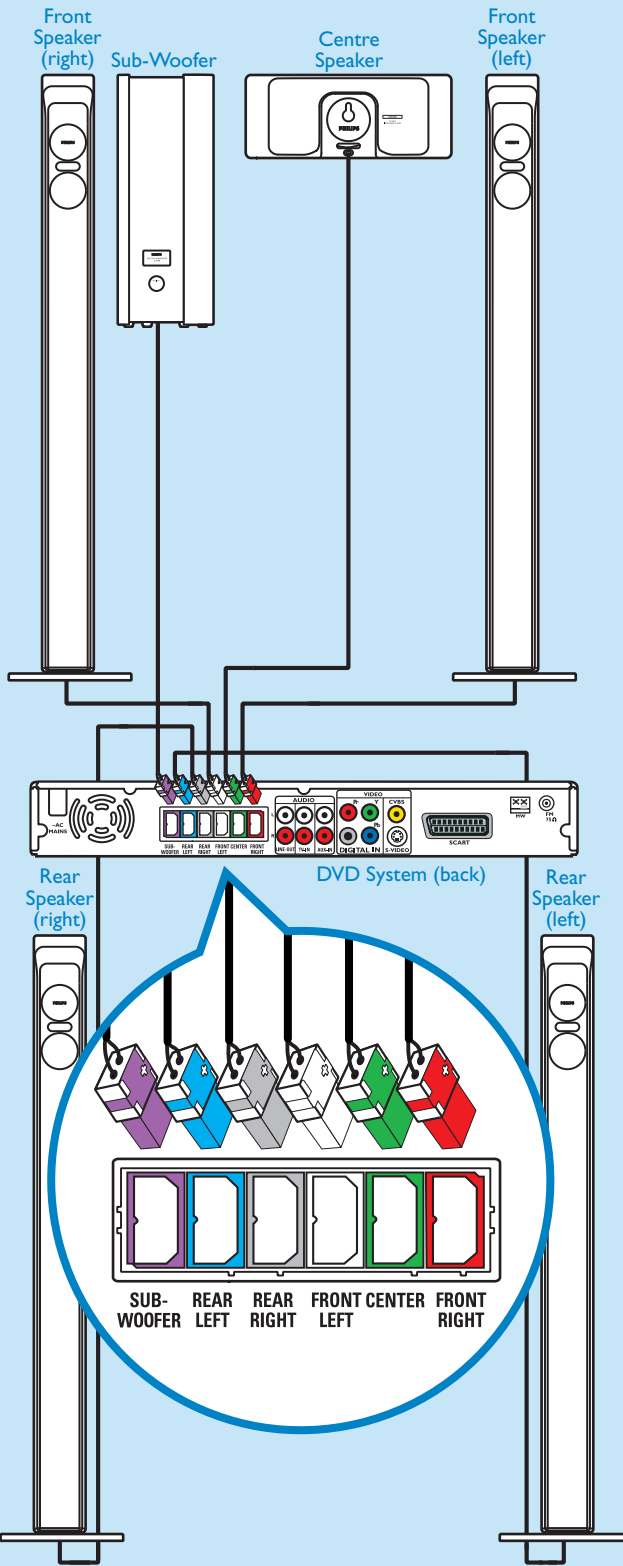


- 3 Push back tab and insert each wire into slot.



C Connect Speakers & Subwoofer to DVD System

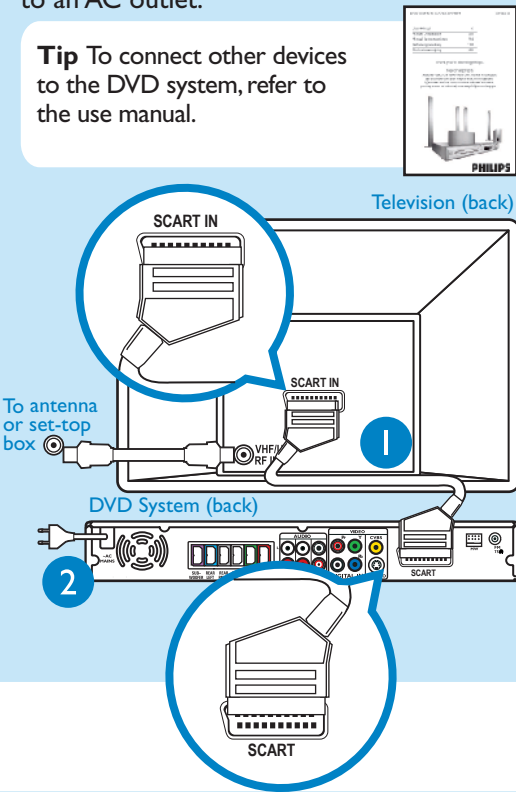
Connect the various coloured plugs from the speakers and subwoofer to the same colour socket on the rear of DVD system.



D Connect DVD system to TV

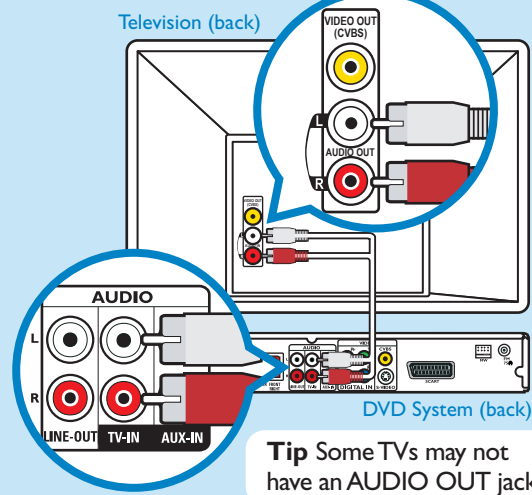
- 1 Use the supplied black SCART cable to connect the SCART socket on the rear of the DVD system and the SCART input socket at the rear of the TV.
- 2 Plug in the power cable of the DVD system to an AC outlet.

Tip To connect other devices to the DVD system, refer to the use manual.



E Connect Audio from TV to DVD System (Optional)

Use the red & white audio cables to connect the red & white TV-IN sockets on the rear of the DVD system and the red & white AUDIO OUT sockets on the TV.

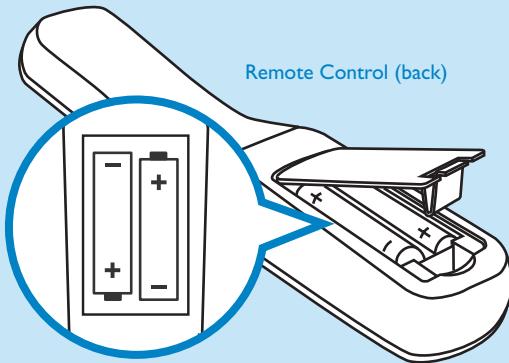


Tip Some TVs may not have an AUDIO OUT jack.

2 Setup

A Insert Batteries in Remote Control

- 1 Remove batteries compartment cover.
- 2 Insert the provided batteries in the remote control. Take note of where the positive and negative ends should go.
- 3 Replace the batteries compartment cover.



B Find Correct Viewing Channel

- 1 Press **STANDBY-ON** on the DVD system's remote control.
- 2 Press **DISC** on the remote control repeatedly until 'DISC' appears on the front panel.
- 3 Press **SETUP**.
- 4 Switch on the TV.
- 5 Press '0' on the TV's remote control, then repeatedly press the Channel Down button until you see the General Setup Page. This is the correct viewing channel for the home theatre system.

Tip In some TVs, to find the correct viewing channel, you can keep pressing the AV or the SELECT buttons. If still unable to find the correct viewing channel, check the connections again or check your TV's user manual.

- 6 Press **SETUP** to finish.

Tip To make changes to any of the options in the Setup menus, refer to the user manual.

