



Philips  
Wireless TV headphones

40-mm drivers/open-back

Over-ear  
Breathable ear cushions

SHD8850



## High-res home cinema sound

Superior cinematic sound for your home

Philips SHD8850 wireless headphones immerse you in your own world of cinematic sound, with total freedom. Digital wireless connectivity provides interference-free, crystal-clear sound, for the ultimate in personal home entertainment.

### Superior listening experience

- Superior cinematic sound from 40 mm drivers
- High-res audio via wired connection

### Ease of use

- 20-hour runtime for long listening sessions
- Move freely with 30 m wireless range
- Automatic on/off power
- Easy-to-use charging dock
- Optical and analogue input fits all televisions

### Designed for long-wearing comfort

- Hammock auto-adjusts for optimal fit
- Breathable velour ear cushions for extensive comfort

**PHILIPS**

Wireless TV headphones  
40-mm drivers/open-back Over-ear, Breathable ear cushions

SHD8850/12

## Highlights

### 20-hour runtime

With a 20-hour runtime, you can indulge in marathon viewing sessions without worrying about losing power.

### 30 m wireless range

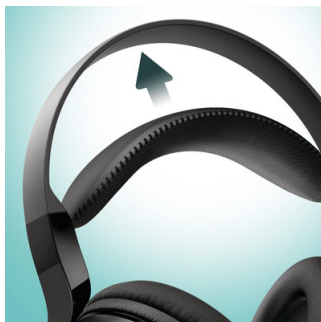


The 30 m transmission range provides mobility and freedom to enjoy your music all around your home.

### Auto on/off

Philips SHD8850 headphones turn on automatically when you put them on your head. And when you've finished watching, they will automatically power off, to ensure power doesn't go to waste.

### Auto-adjustable fit



The self-adjusting lightweight hammock gives you the best fit for your head shape, while offering optimal comfort.

### Cinematic sound



Philips SHD8850 40 mm drivers are acoustically tuned to deliver superior cinematic sound.

### Easy charging



Place the headphones in the charging dock for easy charging.

### Fits all televisions

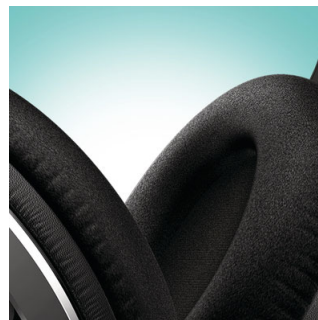
Equipped with an optical and analogue input, Philips SHD8850 headphones are compatible.

### Hi-res audio



High-resolution audio offers the best in sound performance, reproducing the quality of original studio master recordings more faithfully than 16 bit/44.1 kHz CD formats. Using the audio cable provided, Philips SHD8850 wireless headphones support high-resolution audio, delivering uncompromising audio quality from your preferred devices — so you can get more out of your home entertainment.

### Velour ear cushions



Breathable velour ear cushions dissipate pressure and heat, ensuring extensive comfort for long wearing sessions.

# Specifications

## Sound

- Impedance: 32 Ohm
- Speaker diameter: 40 mm
- Sensitivity: 98 dB
- Frequency range: 8–40,000 Hz (when wired); 8–22,500 (wireless mode)
- Maximum power input: 50 mW (when wired)
- Signal/noise ratio: >75 dB
- Distortion (THD): < 0.5% @1k Hz
- Hi-Res Audio
- Driver type: Dynamic

## Connectivity

- Maximum range: Up to 30 m
- Channel selection: Automatic
- Detachable cable
- Headphone socket: 3.5 mm
- Wireless

## Convenience

- Automatic power off

## Design

- Colour: Black
- Wearing style: Headband
- Ear fitting: Over-ear
- Earcup type: Closed-back
- Ear coupling material: Fabric

## Power

- Music play time: 20 hr
- Battery type (Headphones): NiMH rechargeable batteries
- Battery capacity (Headphones): 900 mAh
- Charging time: 6 hr

- Number of batteries: 2 x AAA 1.2 V
- Rechargeable

## Accessories

- Audio cable: 3.5 mm cable
- Docking station (transmitter)
- Included adapters: AC/DC adapter
- Others: 3.5 mm optical cable

## Outer Carton

- Gross weight: 3.578 kg
- GTIN: 1 69 51613 99240 8
- Outer carton (L x W x H): 39.5 x 26 x 32.5 cm
- Net weight: 1.848 kg
- Number of consumer packages: 3
- Tare weight: 1.73 kg

## Dimensions

- Docking station dimensions: 17.4 x 14.2 x 7.4 cm (W x D x H)
- Docking station weight: 0.19 kg
- Product dimensions (WxDxH): 17.6 x 9.5 x 21.9 cm
- Headphones weight: 0.367 kg

## Packaging dimensions

- Packaging dimensions (W x H x D): 24 x 28.5 x 12.5 cm
- EAN: 69 51613 99240 1
- Gross weight: 0.998 kg
- Net weight: 0.616 kg
- Number of products included: 1
- Packaging type: Box
- Tare weight: 0.382 kg
- Type of shelf placement: Hanging



Issue date 2022-08-25

Version: 8.0.7

12 NC: 8670 001 42592  
EAN: 69 51613 99240 1

© 2022 Koninklijke Philips N.V.  
All Rights reserved.

Specifications are subject to change without notice.  
Trademarks are the property of Koninklijke Philips N.V.  
or their respective owners.

[www.philips.com](http://www.philips.com)

\* Battery life of play time is approximate and may vary depending on application condition.