

PHILIPS

1000 series

Sounder speaker
HTL1193B

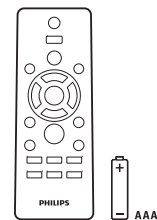
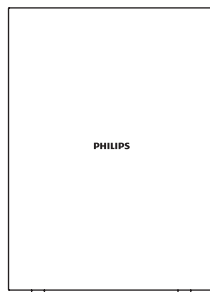
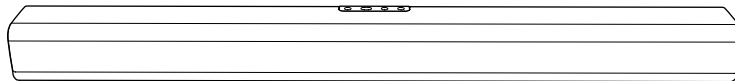
Quick start guide



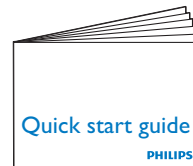
Register your product and get support at
www.philips.com/support



EN Before using your product, read all accompanying safety information

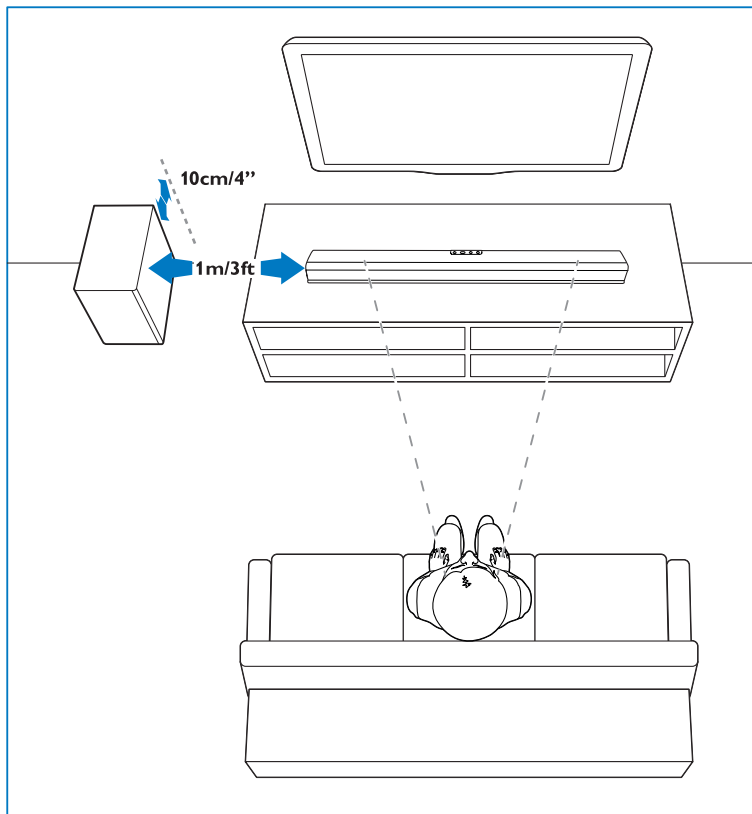


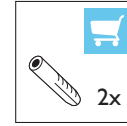
Power Cord



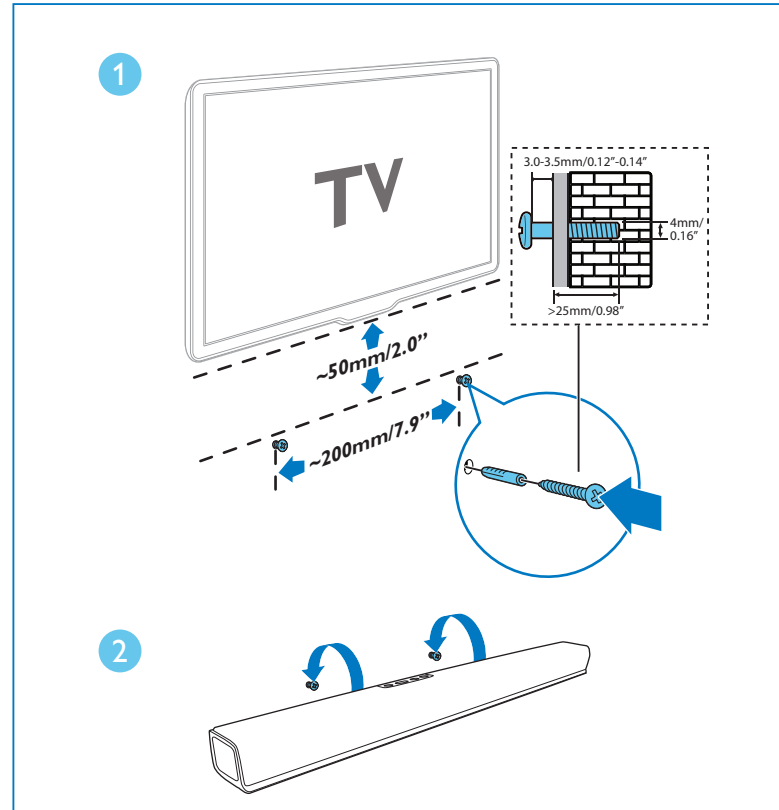
1

EN Position your product



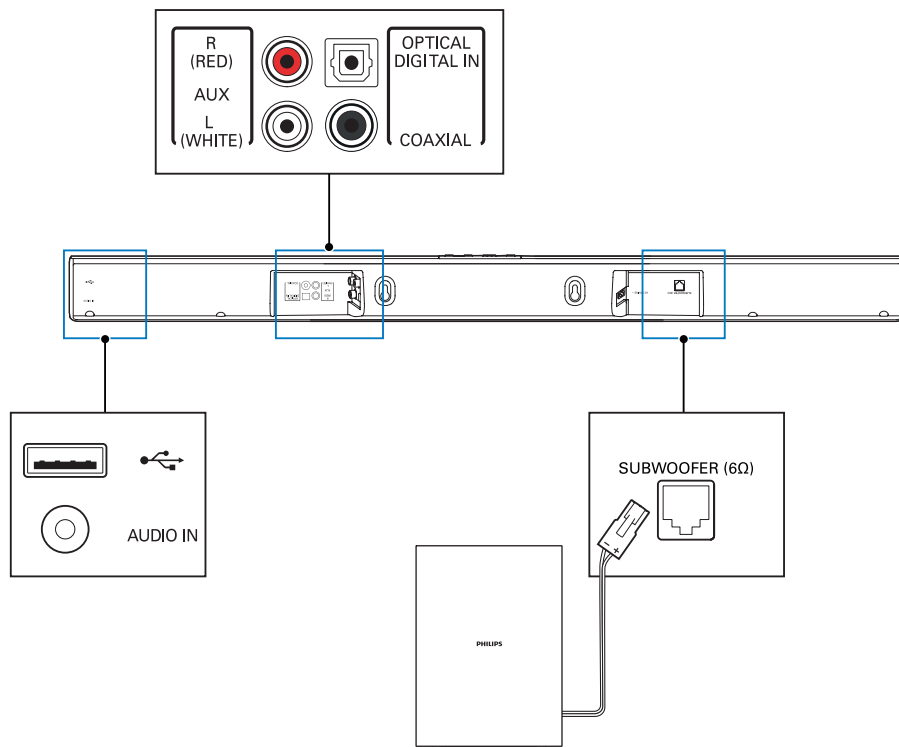


EN Wall mount your product (optional)



2

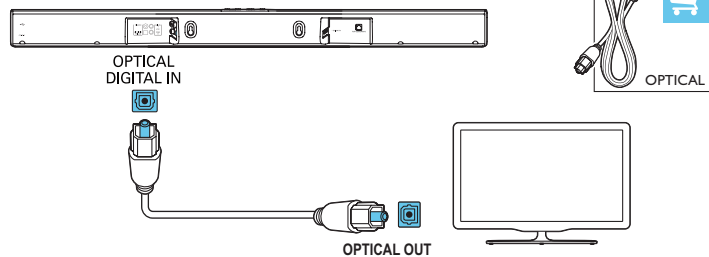
EN Connect your product



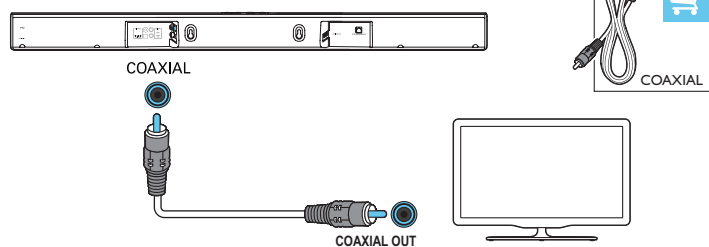
3

EN Hear audio from TV in one of the following ways
(Mute your TV)

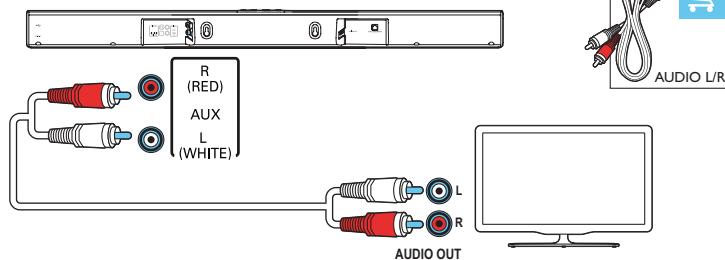
OPTICAL



COAXIAL

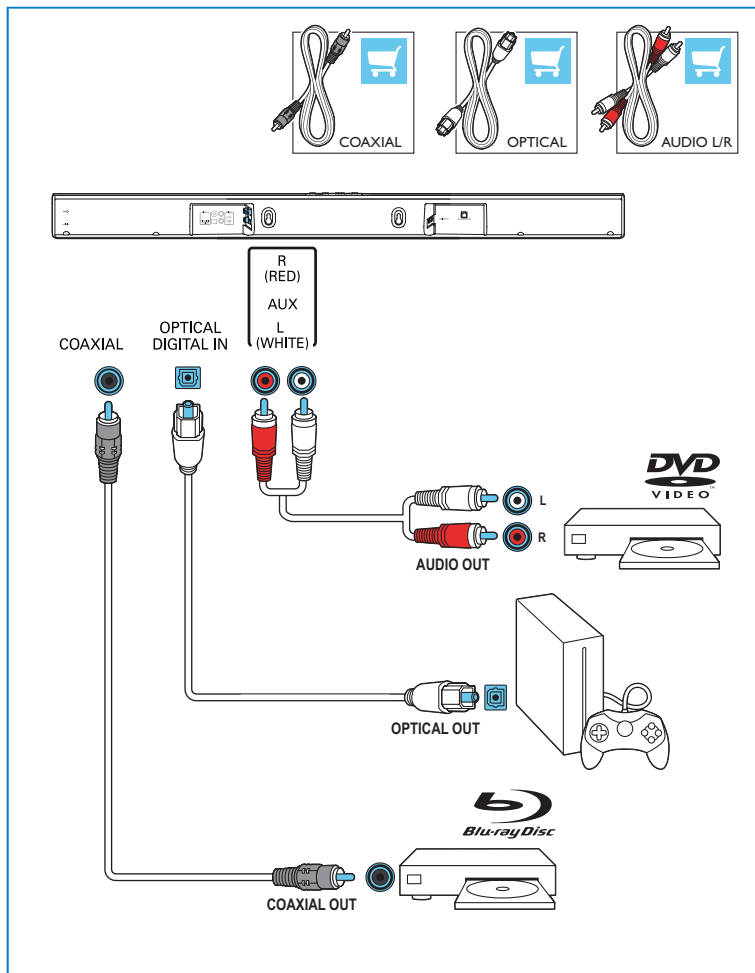


AUDIO L/R



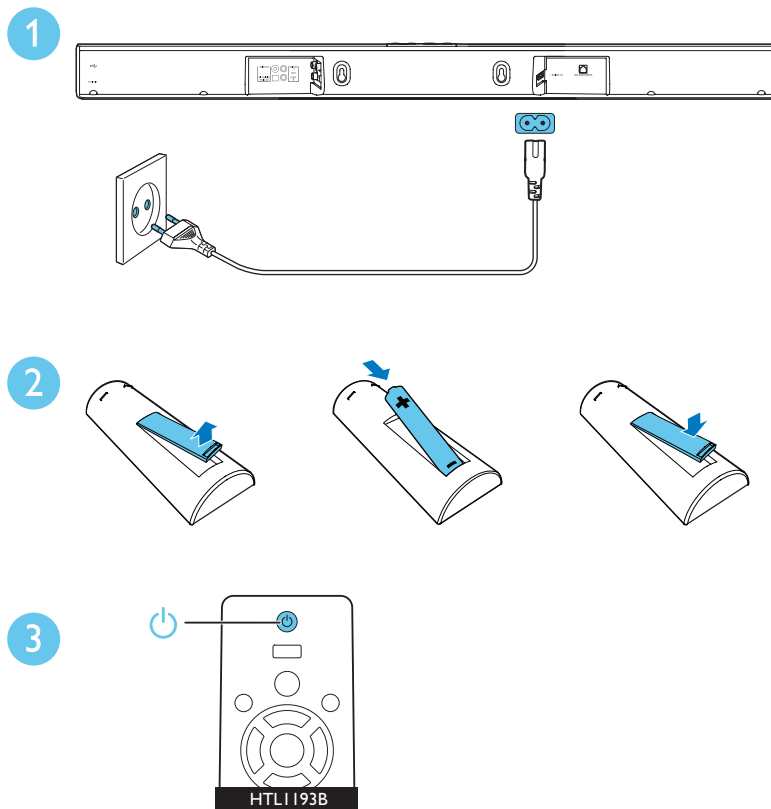
4

EN Enjoy audio from your devices



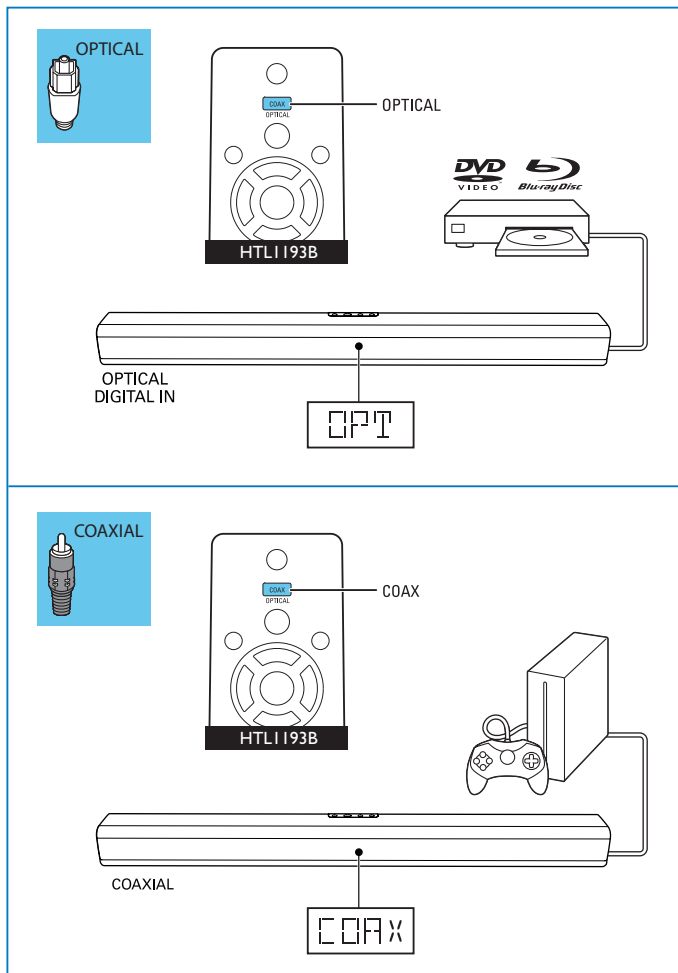
5

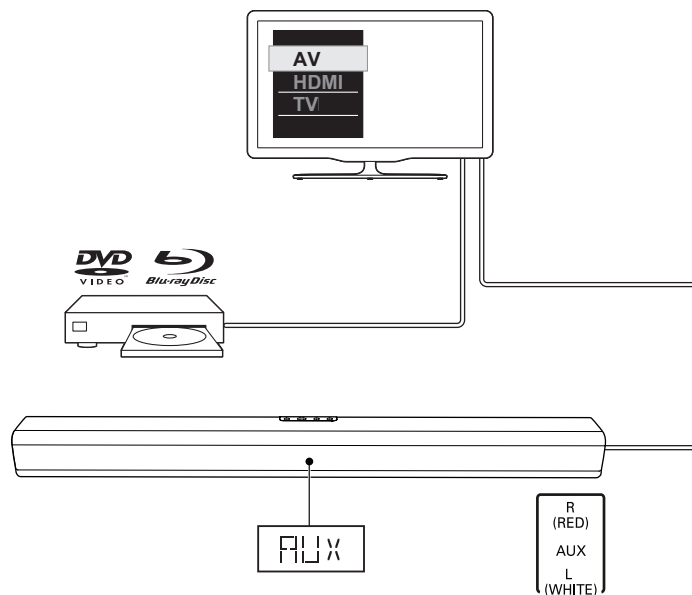
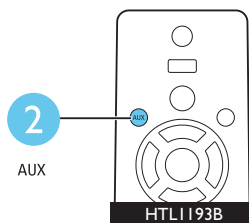
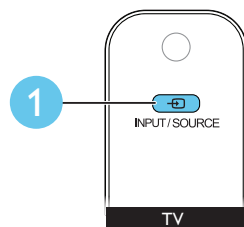
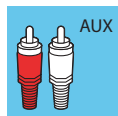
EN Switch on your product



6

EN Select the correct audio source



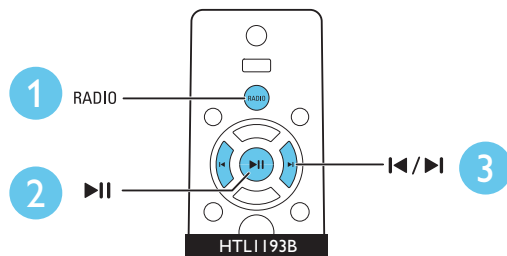
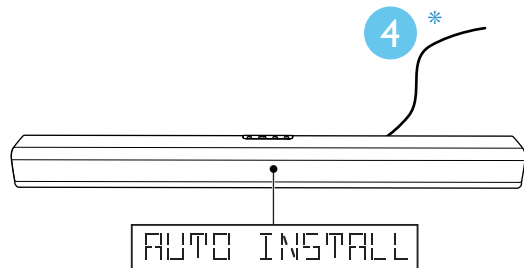


7

EN Listen to FM radio

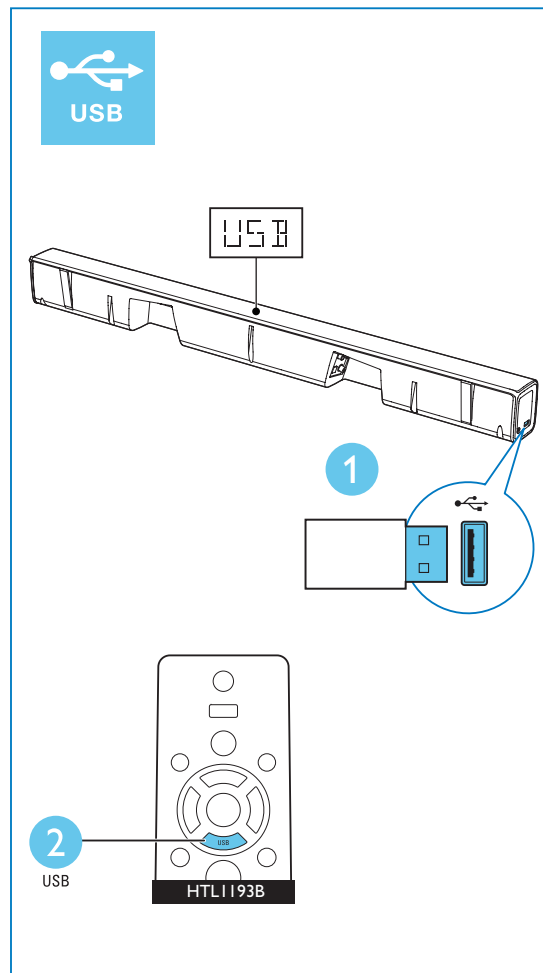
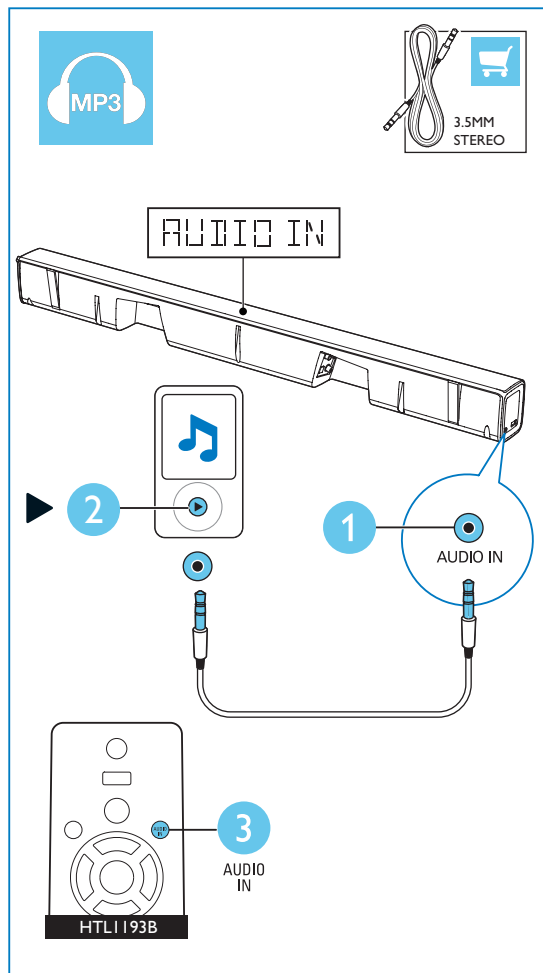
For other radio function, refer to the online user manual

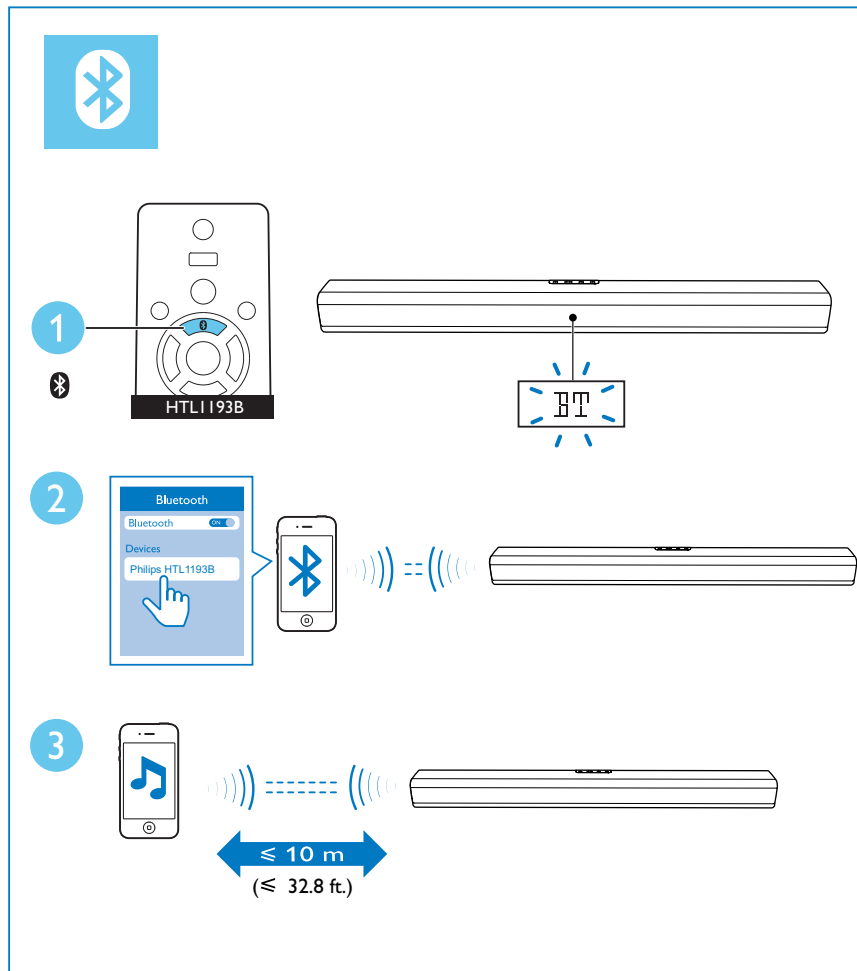
* Extend the FM antenna for better reception



8

EN Play other devices



EN Play audio through Bluetooth



EN For more information about
using this product, visit
www.philips.com/support



www.philips.com/support



Manufactured under license from Dolby Laboratories. Dolby and the double-D symbol are trademarks of Dolby Laboratories.



The Bluetooth® word mark and logos are registered trademarks owned by Bluetooth SIG, Inc. and any use of such marks by Gibson Innovations Limited is under license. Other trademarks and trade names are those of their respective owners.



Specifications are subject to change without notice

2017 © Gibson Innovations Limited. All rights reserved.

This product has been manufactured by, and is sold under the responsibility of Gibson Innovations Ltd., and Gibson Innovations Ltd. is the warrantor in relation to this product.

Philips and the Philips Shield Emblem are registered trademarks of Koninklijke Philips N.V. and are used under license.

HTL1193B_94_QSG_V1.0

