

Always there to help you

Register your product and get support at
www.philips.com/welcome

AEA1000



User manual

PHILIPS

Contents

1 Important	2
Important safety information	2
Notice	3

2 Your InRange device	5
Introduction	5
What's in the box	5
Your InRange device	5

3 Prepare	6
Prepare your iPhone 4S/iPhone 5 or New iPad	6
Prepare the InRange device	6
Set up Bluetooth connection	7

4 Use	9
Locate your iPhone 4S/iPhone 5/New iPad or InRange device	9
Alert you when your iPhone 4S/ iPhone 5/New iPad and InRange device are out of range	10
Set safe range free of alerts	10

5 Product information	11
------------------------------	-----------

6 Troubleshooting	12
--------------------------	-----------

1 Important

Important safety information

The translation of this document is for reference only.

In the event of any inconsistency between the English version and the translated version, the English version takes precedence.

Caution

- RISK OF EXPLOSION IF THE BATTERY IS REPLACED BY AN INCORRECT TYPE.
 - DISPOSE OF USED BATTERIES ACCORDING TO THE INSTRUCTIONS.
 - To avoid damage or malfunction:
 - Do not expose the device to excessive heat caused by heating equipment or direct sunlight.
 - Do not drop the device or allow objects to fall on the device.
 - Do not allow the device to be submerged in water. Do not expose the battery compartment to water, as water entering the device may cause major damage.
 - Active mobile phones in the vicinity may cause interference.
 - Do not use any cleaning agents containing alcohol, ammonia, benzene, or abrasives as these may harm the device.
-
- Refer all servicing to qualified service personnel. Servicing is required when the device has been damaged in any way, such as objects have fallen into the device or the device does not operate normally.
 - The device shall not be exposed to dripping or splashing.
 - Do not place any sources of danger on the device (e.g. lighted candles).
 - The small parts of this device can potentially be swallowed by babies or small children. Keep these parts out of reach of children.

About operating and storage temperatures

- Operate in a place where temperature is always between 0 and 35°C (32 to 95°F)
- Store in a place where temperature is always between -20 and 45°C (-4 to 113°F).
- Battery life may be shortened in low temperature conditions.

About replacement of parts/ accessories

Visit www.philips.com/support to order replacement parts/accessories.

Risk of swallowing batteries!

- The device may contain a coin/button type battery, which can potentially be swallowed. Keep the battery out of reach of children at all times! If swallowed, the battery can cause serious injury or death. Severe internal burns can occur within two hours of ingestion.
- If you suspect that a battery has been swallowed or placed inside any part of the body, seek immediate medical attention.
- When you change the batteries, always keep all new and used batteries out of reach of children. Make sure that the battery compartment is completely secure after you replace the battery.
- If the battery compartment cannot be completely secured, discontinue use of the product. Keep out of reach of children and contact the manufacturer.

Any changes or modifications made to this device that are not expressly approved by Philips Consumer Lifestyle may void the user's authority to operate the equipment.

Notice

Notice of compliance

The device complies with Part 15 of the FCC Rules, and and Industry Canada licence-exempt RSS standard(s). Operation is subject to the following two conditions:

- 1) This device may not cause harmful interference, and
- 2) This device must accept any interference received, including interference that may cause undesired operation.

FCC rules

This equipment has been tested and found to comply with the limits for a Class B digital device, pursuant to part 15 of the FCC Rules. These limits are designed to provide reasonable protection against harmful interference in a residential installation. This equipment generates, uses and can radiate radio frequency energy and, if not installed and used in accordance with the instruction manual, may cause harmful interference to radio communications.

However, there is no guarantee that interference will not occur in a particular installation. If this equipment does cause harmful interference to radio or television reception, which can be determined by turning the equipment off and on, the user is encouraged to try to correct the interference by one or more of the following measures:

- Relocate the receiving antenna.
- Increase the separation between equipment and receiver.
- Connect the equipment into an outlet on a circuit different from that to which the receiver is connected.
- Consult the dealer or an experienced radio/TV technician for help.

Radiation Exposure Statement

This equipment complies with FCC radiation exposure limits set forth for an uncontrolled environment. This equipment should be installed and operated with a minimum distance of 20cm between the radiator and your body. This transmitter must not be co-located or operated in conjunction with any other antenna or transmitter.

This equipment also complies with Industry Canada RSS-102 with respect to Canada's Health Code 6 for Exposure of Humans to RF Fields.

IEEE 802.11b, 802.11g or 802.11n operation of this product in the U.S.A. is firmware-limited to channels 1 through 11.

Warning: 1) Any changes or modifications not expressly approved by the manufacturer could void the user's authority to operate the equipment. 2) The manufacturer is not responsible for any radio or TV interference caused by unauthorized modifications to this equipment. Such modifications could void the user's authority to operate the equipment.

Model number: PHILIPS AEA1000/00

Trade Name: Philips

Responsible Party: Philips, P.O. Box 10313
Stamford, CT 06904

Canada

This device complies with Industry Canada licence-exempt RSS standard(s): Operation is subject to the following Two conditions: (1) this device may not cause interference, and (2) this device must accept any interference, including interference that may cause undesired operation of the device.

Radio interference

This Class B digital apparatus complies with Canadian ICES-003.

Disposal of your old product and battery

Your product is designed and manufactured with high quality materials and components, which can be recycled and reused.

Never dispose of your product with other household waste. Please inform yourself about the local rules on the separate collection of electrical and electronic products and batteries. The correct disposal of these products helps prevent potentially negative consequences on the environment and human health.

Your product contains batteries, which cannot be disposed of with normal household waste. Please inform yourself about the local rules on separate collection of batteries. The correct disposal of batteries helps prevent potentially negative consequences on the environment and human health.

Please visit www.recycle.philips.com for additional information on a recycling center in your area.

Environmental information

All unnecessary packaging has been omitted. We have tried to make the packaging easy to separate into three materials: cardboard (box), polystyrene foam (buffer) and polyethylene (bags, protective foam sheet.)

Your system consists of materials which can be recycled and reused if disassembled by a specialized company. Please observe the local regulations regarding the disposal of packaging materials, exhausted batteries and old equipment.



The Bluetooth® word mark and logos are registered trademarks owned by Bluetooth SIG, Inc. and any use of such marks by Philips is under license.

Disclaimer

Philips is not responsible for any loss of valuables.

2 Your InRange device

To fully benefit from the support that Philips offers, register your product at www.philips.com/welcome.

Introduction

This InRange device offers you a loss prevention solution that allows you to:

- locate your iPhone 4S/iPhone 5/New iPad from the InRange device.
- attach the InRange device to your valuables and locate them from your iPhone 4S/iPhone 5/New iPad.
- alert you from the InRange device when your iPhone 4S/iPhone 5/New iPad is beyond the set range.
- alert you from your iPhone 4S/iPhone 5/New iPad when your valuables attached to the InRange device are beyond the set range.

What's in the box

Check and identify the contents of your package:

- InRange device
- Protective pouch
- Metal lock
- Cell battery (CR2016) (for replacement)
- Battery eject tool
- Lanyard
- Quick start guide
- Safety sheet

Your InRange device

This InRange device is compatible with the following iPhone and iPad models:

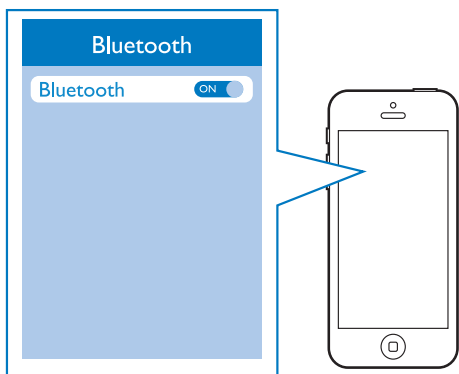
- The New iPad
- iPhone 5
- iPhone 4S

3 Prepare

To fully benefit from the support that Philips offers, register your product at www.philips.com/welcome.

Prepare your iPhone 4S/ iPhone 5 or New iPad

- 1 Enable Bluetooth on your iPhone 4S/ iPhone 5/New iPad.

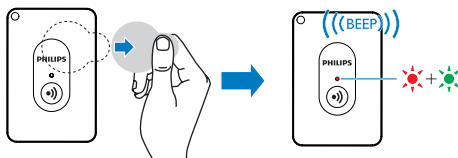


- 2 Download and install **Philips InRange** from Apple App Store.





Prepare the InRange device

For first-time use:

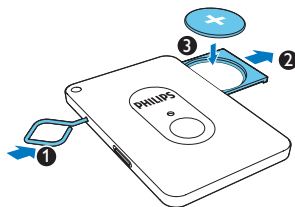


- Remove the plastic tab from the battery compartment.
 - ↳ The InRange device switches on automatically.
 - ↳ The power indicator flashes red and green alternately, and the InRange device beeps.

Tip

- To switch off the InRange device, press and hold  for more than 3 seconds until the power indicator turns off and the InRange device beeps. To switch on it again, press and hold  until the power indicator flashes red and green and the InRange device beeps.

To replace the battery:



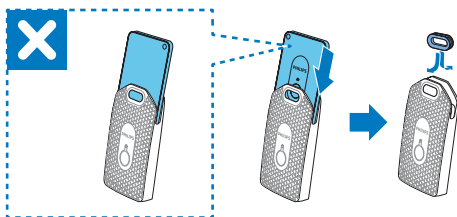
- 1 Use the supplied metal pin to eject the battery compartment.
- 2 Load a CR2016 cell battery with the correct polarity as indicated.
- 3 Push to close the battery compartment.

Set up Bluetooth connection

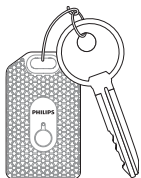
Note

- Before setup, make sure that you have enabled Bluetooth on your iPhone 4S/iPhone 5/New iPad, and the power indicator on the InRange device flashes red and green alternately.

- 1 Put the InRange device into the protective pouch, then use the supplied metal lock to secure the pouch.

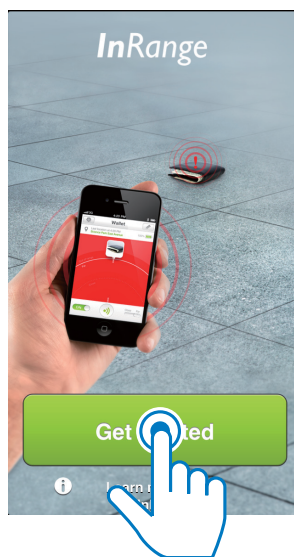


- 2 Attach the InRange device to your valuables (objects), such as a key or bag.



- 3 Run **Philips InRange** on your iPhone 4S/iPhone 5/New iPad.

- 4 Tap **Get Started**.



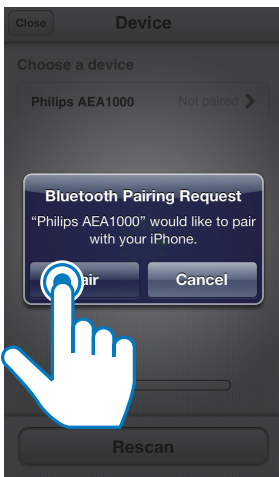
- 5 As instructed, make sure that you have enabled Bluetooth on your iPhone 4S/iPhone 5/New iPad, then tap **Next**.



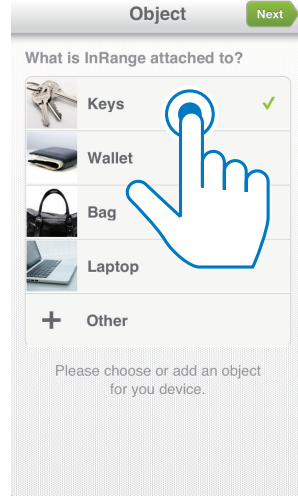
- 6 As instructed, make sure that you have switched on the InRange device, then tap **Next**.
- ↳ The iPhone 4S/iPhone 5/New iPad starts to scan and search for the available InRange device.
 - ↳ After the InRange device is found, 'Philips AEA1000' appears on the app screen.



- 7 Tap 'Philips AEA1000', then tap **Pair** on the pop-up message.
- ↳ Your iPhone 4S/iPhone 5/New iPad starts to pair and connect with the InRange device.



- 8 After successful connection, tap the image/name of the object attached to the InRange device.
- If you cannot find a matching image/name, tap **Other**, then follow the on-screen instructions to take a picture and name your object.



- 9 Select a safe distance for the object to be protected, then tap **Done**.

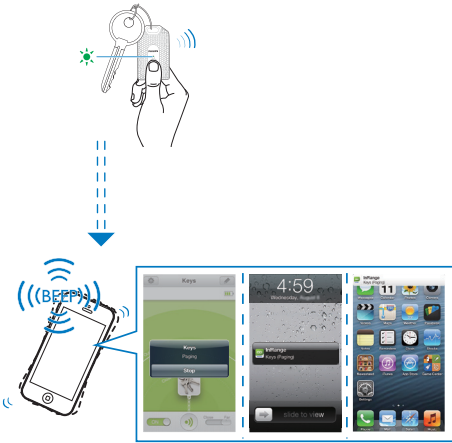




4 Use

Locate your iPhone 4S/iPhone 5/New iPad or InRange device

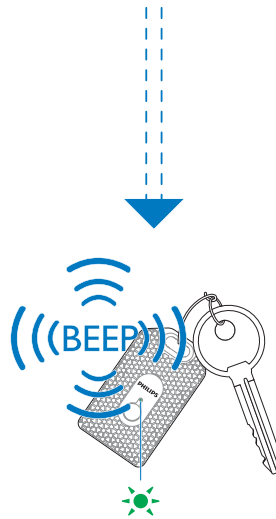
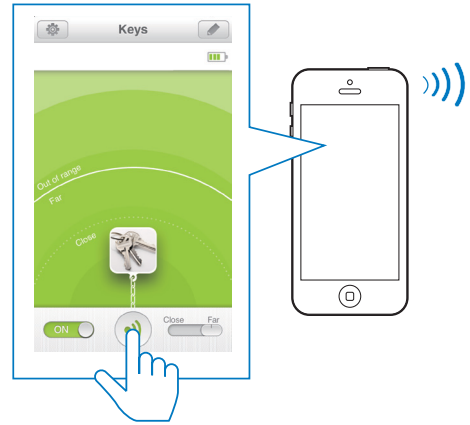
You can locate your iPhone 4S/iPhone 5/New iPad or InRange device simply with one touch.




To locate your iPhone 4S/iPhone 5/New iPad:



- 1 Press  on the InRange device.
↳ Both the InRange device and your iPhone 4S/iPhone 5/New iPad beep.
- 2 Follow the beeps to find your iPhone 4S/iPhone 5/New iPad.
- 3 Press  on the InRange device again or tap **Stop** on the popup menu of your iPhone 4S/iPhone 5/New iPad to stop beep.

To locate your valuables attached to the InRange device:



- 1 Run Philips InRange on your iPhone 4S/iPhone 5/New iPad, then tap  on the app screen.
↳ Both the InRange device and your iPhone 4S/iPhone 5/New iPad beep.
- 2 Follow the beeps to find the InRange device.
- 3 Press  on the InRange device or tap  on the app screen of your iPhone 4S/iPhone 5/New iPad again to stop beep.

Alert you when your iPhone 4S/iPhone 5/New iPad and InRange device are out of range

To prevent loss of your iPhone 4S/iPhone 5/ New iPad or your valuables attached to the InRange device, you can hear beeps when the InRange device and your iPhone 4S/iPhone 5/ New iPad are out of the set range.




To stop the beeps:

- Follow the beeps and walk around until your iPhone 4S/iPhone 5/New iPad and the InRange device return to the set range.

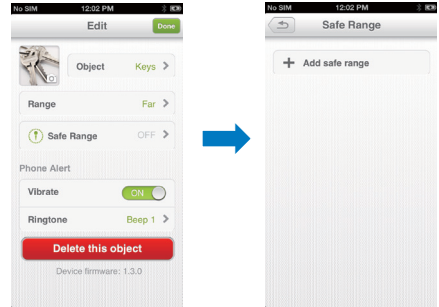
Set safe range free of alerts

You can use the safe range settings to prevent your iPhone 4S/iPhone 5/New iPad or InRange device from ringing within a certain range.

- 1 Run **Philips InRange** on your iPhone 4S/ iPhone 5/New iPad, then tap .



- 2 Tap **Safe Range** -> **Add Safe Range**.



- 3 Select a place on the map as your safe range, then tap **Done** to finish the setting.



5 Product information

Bluetooth version	Bluetooth® smart
Battery	CR2016
Battery life	3 months
Product dimension	59.9x39.9x3.8mm 78.0x44.0x7.9mm (with pouch)
Weight	10.8g

6 Troubleshooting



Warning

- Risk of electric shock. Never remove the casing of the device.

To keep the warranty valid, never try to repair the device yourself.

If you have problems using this device, check the following points before you request service. If you still have a problem, register your device and get support at www.philips.com/support.

Failed to set up Bluetooth connection between my iPhone 4S/iPhone 5/New iPad and InRange device.

- Tap **Rescan** on the app screen of Philips InRange to try again.
- Check whether the InRange device is switched on and the power indicator flashes red and green. Press and hold **↻** on the InRange device for more than 3 seconds to switch on the device.
- Check whether you have enabled Bluetooth on your iPhone 4S/iPhone 5/ New iPad.

Why is that there is no beep when my iPhone 4S/iPhone 5/New iPad and InRange device are out of range?

- Check whether you have set the safe range.
- Check whether you have switched off the InRange device.
- Check whether the battery in the InRange device is drained. Replace the battery.



Specifications are subject to change without notice
© 2013 Koninklijke Philips Electronics N.V.
All rights reserved.

AEA1000_UM_37_V3.0

