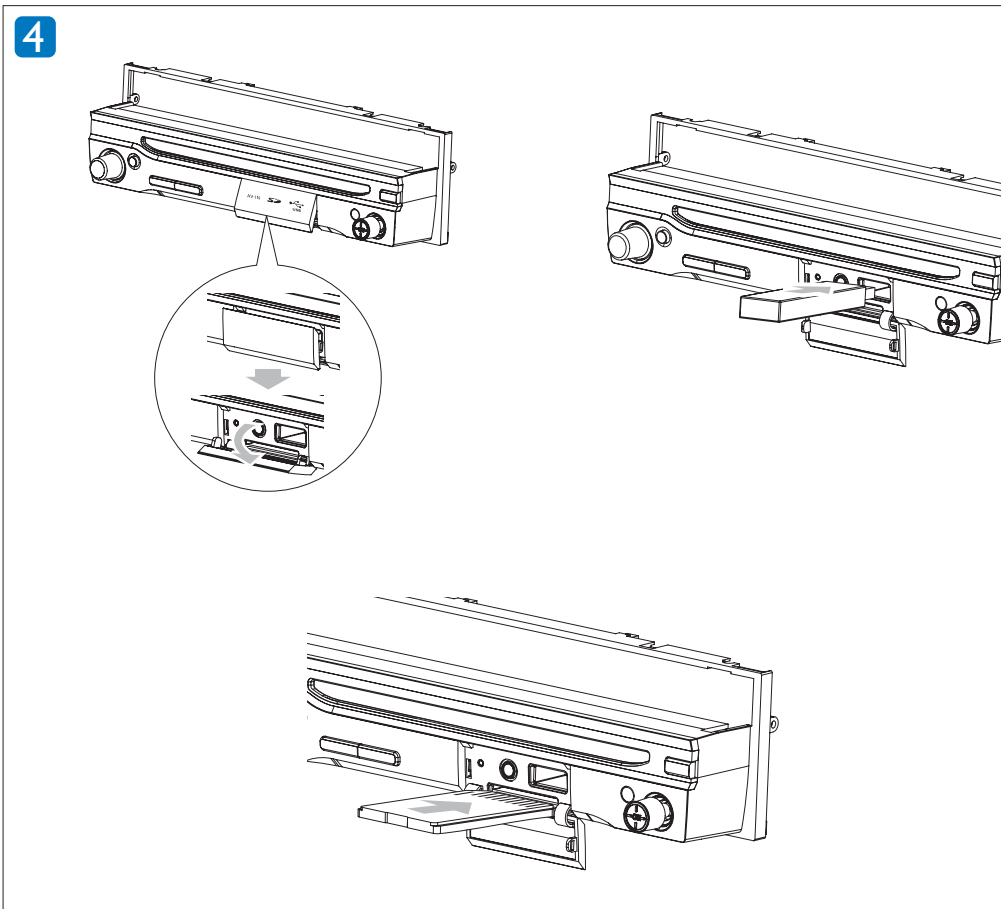
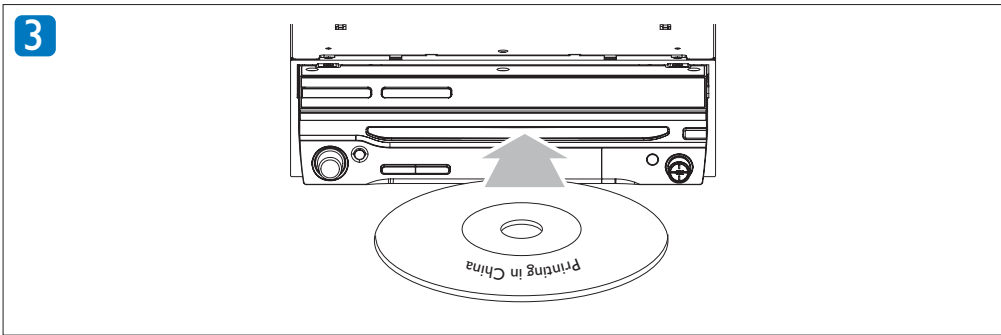
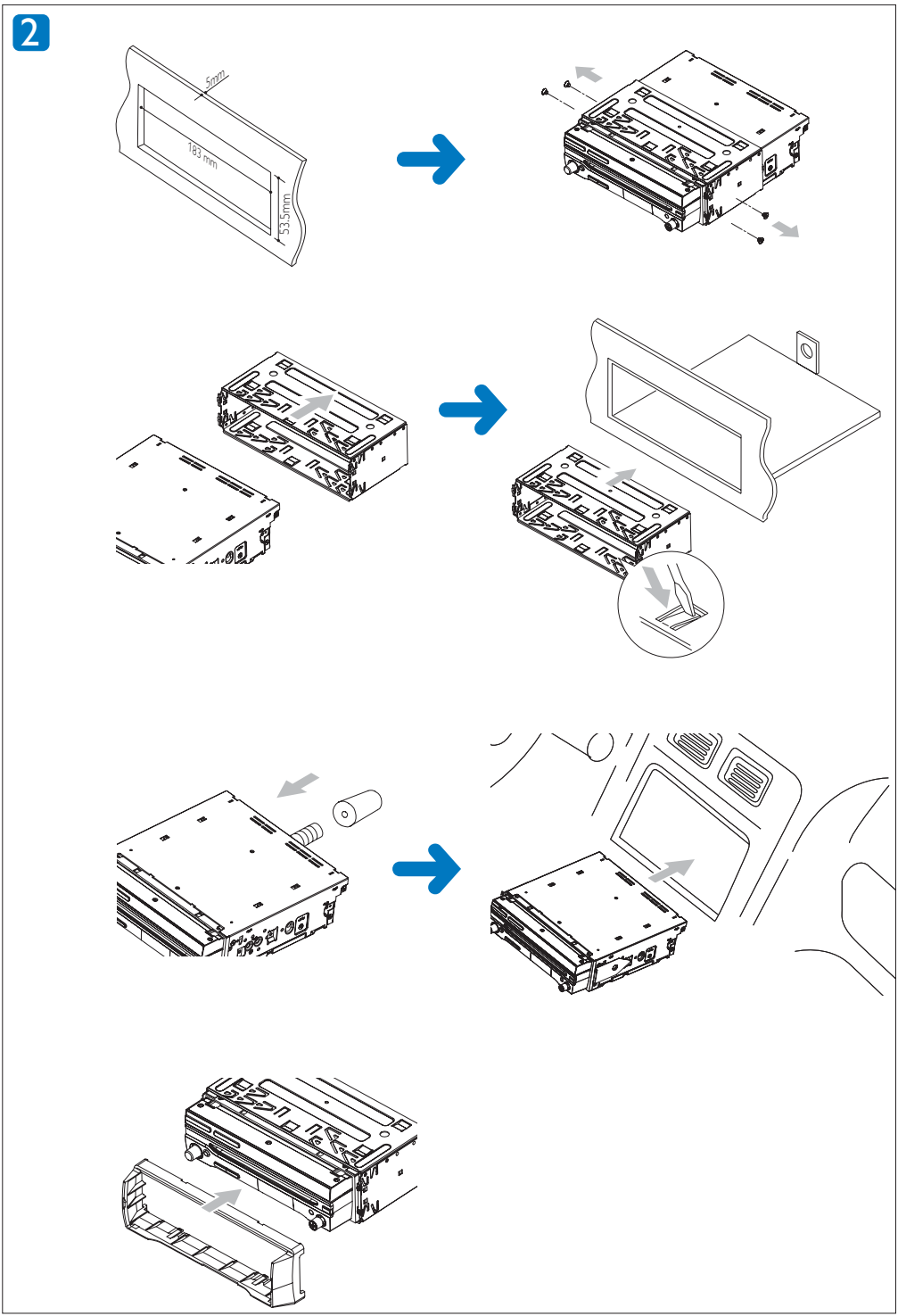
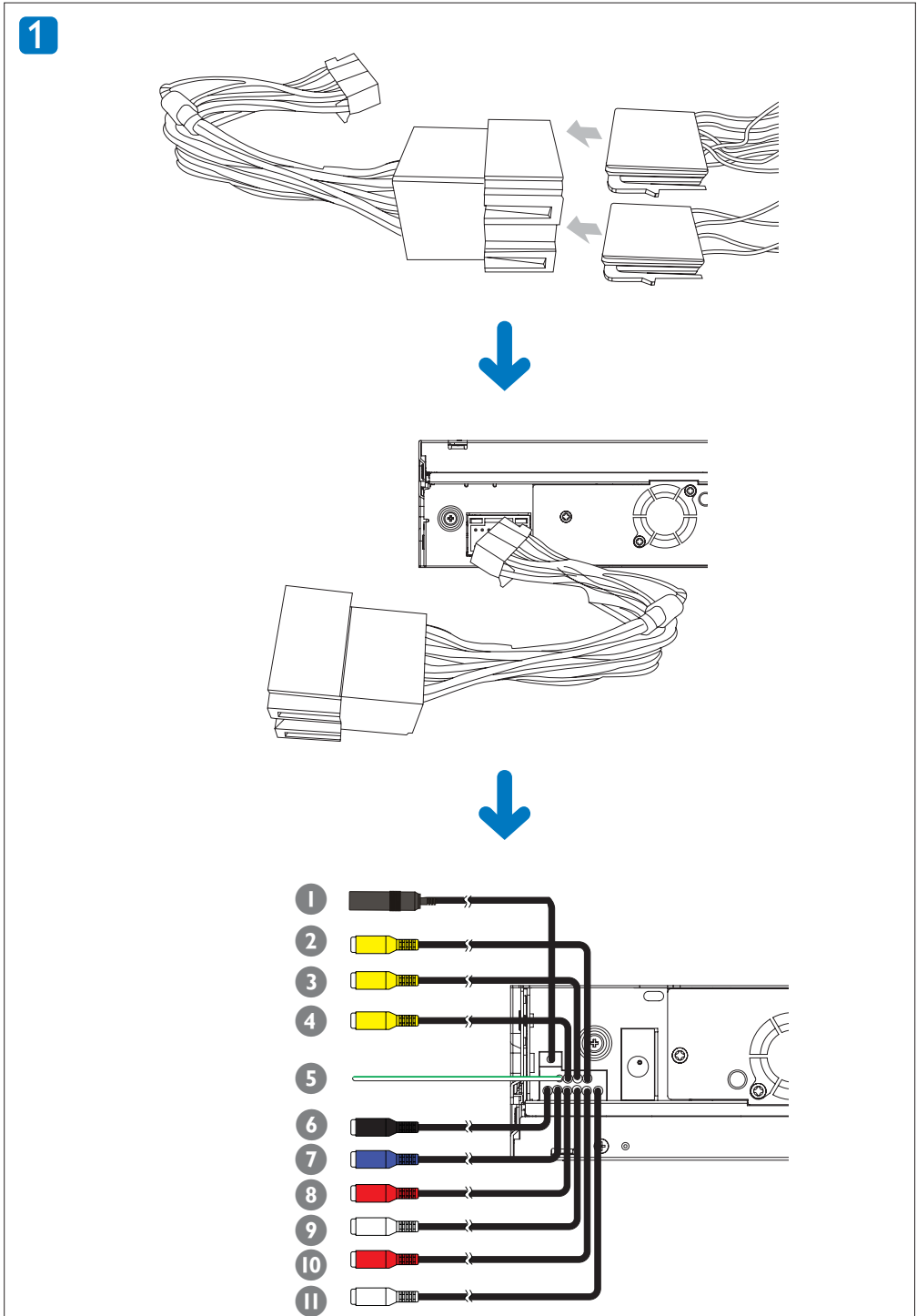




ENG Quick Start Guide

PHILIPS



English

Connect wires: ISO connectors

- 1** Pull out the ISO connectors from the car dashboard and connect them to the bigger end of the supplied standard connector.
- 2** Connect the other end of supplied standard connector to the unit.
- If necessary, connect the following:

Connector	Connect to/with
1 Black cable	Antenna
2 Yellow cable	Video out 1
3 Yellow cable	Video out 2
4 Yellow cable	Camera in
5 Green/white wire	Parking wire
6 Black cable	Bluetooth microphone
7 Blue cable	Subwoofer
8 Red cable	Front line out L
9 White cable	Front line out R
10 Red cable	Rear line out L
11 white cable	Rear line out R

Mount in the dashboard

Note

- Check wire connection before you mount the unit into a car.
- If preset radio stations are lost when the ignition key is turned OFF and then back ON, reconnect the red leads crosswise to the yellow ones.

- 1** If the car does not have an on-board drive or navigation computer, disconnect the negative terminal of the car battery.
- If you disconnect the car battery in a car that has an on-board drive or

navigation computer, the computer may lose its memory.

- If the car battery is not disconnected, to avoid short-circuit, ensure that bare wires do not touch each other.
- 2** Ensure that car dashboard opening is within these measurements:
- Since the unit cannot be used if the dashboard opening's slant angle is above 20 degrees: Ensure that the horizontal slant of the car dashboard opening is between 0 and 20 degrees
- 3** Remove the screws on the both side of the unit.
- 4** Remove the mounting sleeve.
- 5** Install the sleeve into the dashboard and bend the tabs outward to fix the sleeve.
- 6** Place the rubber cushion over the end of the bolt.
- 7** Slide the unit into the dashboard until a click sound is heard.
- If the unit cannot fit into the dashboard, remove the mounting bracket on the both side of the unit and replace them with the supplied short mounting brackets.
- 8** Attach the trim plate.
- 9** Reconnect the negative terminal of the car battery.

Turn on

- 1** Press the **⏻** to turn on the unit.
- The screen opens automatically.
 - The available OSD (On-Screen Display) languages are displayed.
- 2** Touch a language to select.
- The OSD language is changed to the selected language immediately.
 - To adjust the screen tilt, press **▲ TILT ▼**.
 - To close the screen, press **OPEN/CLOSE**.
 - To adjust the brightness/contrast, press **⚙/⊕**, then adjust **4 WAY NAVIGATION**.
 - To turn off the system, press **⏻** for 3 seconds.
 - The screen closes automatically.

Set clock

- 1** Touch **⌂** to display main menu.
- 2** Touch **[Setting]**.
- The setup menu is displayed.
- 3** Touch **[General]**.
- 4** Touch the **[Clock mode]** repeatedly to select:
- [12hr]** : 12 hour mode
 - [24hr]** : 24 hour mode
- 5** Touch the hour digits, then touch **+** or **-**.
- 6** Touch the minute digits, then touch **+** or **-**.
- 7** If 12 hour mode is selected, touch **+** or **-** to select **AM** or **PM**.
- 8** Touch **⌂** to exit.

Tune to a radio station

- 1** Touch **⌂** to display the main menu.
- 2** Touch **[Radio]**.
- Band and frequency information is displayed.
- 3** Touch **[Band]** repeatedly to select:
- FM band options: **FM1, FM2, FM3**
 - AM band options: **AM1, AM2**
- 4** Briefly touch **[Previous]** or **[Next]** to tune to a radio station by step.

Play discs

- 1** Insert the disc into the disc slot with label side facing up.
- Play starts automatically.
 - To remove the disc, press the **▲** button.
 - When the disc is ejected, the unit switches to the previous source, if connected. Otherwise, the unit switches to **[Radio]** mode automatically.

Insert USB or SD/MMC card

- 1** Open the USB/SD/MMC card cover.

- 2** Insert the USB device or SD/MMC card into the USB socket or SD/MMC card slot.
- Play starts automatically.

Pair the Bluetooth-enabled devices

- 1** Turn on the Bluetooth function on the device.
- 2** Setup the Bluetooth function on your device.
- 3** Select "CED750" in the pairing list.
- 4** Enter default password "0000".
- il pairing succeeds. **[Connect]** is displayed on the panel.

Make a call

- 1** Pair the phone with the system.
- 2** Touch **⌂** to return to main menu.
- 3** Touch **[Bluetooth]**.
- The Bluetooth menu is displayed.
- 4** Touch **☎** to dial.

Receive call

- 1** If there is incoming call, **[Incoming call...]** flashes on the screen. Speak into the Bluetooth microphone.
- 2** When conversation ends, touch **☎** to terminate the call.

