

Always there to help you

Register your product and get support at
www.philips.com/welcome



DS125



User Manual

PHILIPS

Contents

1	Safety	3
	Important Safety Instructions	3
2	Your Docking Speaker	4
	Introduction	4
	What's in the box	4
3	Get started	4
	Connect power	4
	Set the clock	4
4	Use your iPod/iPhone	5
	Compatible iPod/iPhone	5
	Listen to an iPod/iPhone playlist	5
	Charge the iPod/iPhone	6
5	Play from an external device	6
6	Adjust volume	7
7	Adjust brightness	7
8	Product information	8
	General information	8
	Amplifier	8
	Speakers	8
9	Troubleshooting	8
10	Notice	9
	Disposal of your old product	9
	Trademarks	9
	Copyright	9

1 Safety

Important Safety Instructions

- Heed all warnings.
- Follow all instructions.
- Do not use this apparatus near water.
- Clean only with dry cloth.
- Do not block any ventilation openings. Install in accordance with the manufacturer's instructions.
- Do not install near any heat sources such as radiators, heat registers, stoves, or other apparatus (including amplifiers) that produce heat.
- Protect the power cord from being walked on or pinched, particularly at plugs, convenience receptacles, and the point where they exit from the apparatus.
- Only use attachments/accessories specified by the manufacturer.
- Unplug this apparatus during lightning storms or when unused for long periods of time.
- Refer all servicing to qualified service personnel. Servicing is required when the apparatus has been damaged in any way, such as power-supply cord or plug is damaged, liquid has been spilled or objects have fallen into the apparatus, the apparatus has been exposed to rain or moisture, does not operate normally, or has been dropped.
- Apparatus shall not be exposed to dripping or splashing.
- Do not place any sources of danger on the apparatus (e.g. liquid filled objects, lighted candles).
- Where the plug of the Direct Plug-in Adapter is used as the disconnect device, the disconnect device shall remain readily operable.



Warning

- Never remove the casing of this apparatus.
- Never lubricate any part of this apparatus.
- Never place this apparatus on other electrical equipment.
- Keep this apparatus away from direct sunlight, naked flames or heat.
- Make sure that you always have easy access to the power cord, plug, or adaptor to disconnect the apparatus from the power.



Note

- The type plate is located on the bottom of the apparatus.

2 Your Docking Speaker

Congratulations on your purchase, and welcome to Philips! To fully benefit from the support that Philips offers, register your product at www.philips.com/welcome.

If you contact the Consumer Care, you will be asked for the model number and serial number of this product. The model number and serial number are on its bottom. Write the numbers here:

Model No. _____

Serial No. _____

Introduction

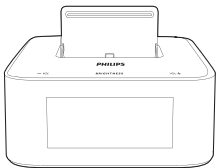
With this docking speaker, you can:

- enjoy music from your iPod/iPhone,
- charge your iPod/iPhone,
- enjoy music from an external audio player, and
- know the time.

What's in the box

Check and identify the contents of your package:

- Main unit
- 1 x AC adaptor
- Short user manual



3 Get started

Always follow the instructions in this chapter in sequence.

Connect power

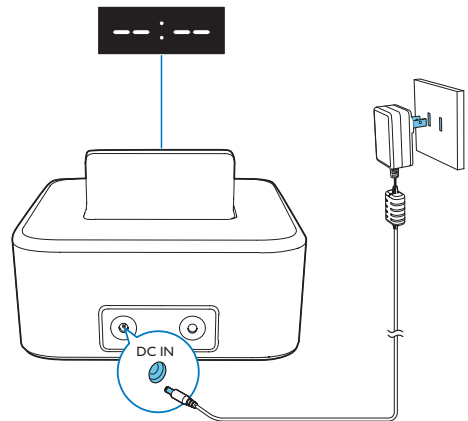


Caution

- Risk of product damage! Make sure that the power supply voltage matches the voltage printed on the bottom of the unit.
- Risk of electric shock! When you unplug the AC power adaptor, hold the plug securely. Never pull the power cord.

Connect the AC power adaptor to

- the **DC IN** socket on the back of the docking speaker; and
- the power supply.
↳ The docking speaker is ready for use.



Set the clock

- 1 Press and hold **BRIGHTNESS** to enter the clock setting mode.
↳ 24H or 12H is displayed.

- 2 Press **-VOL/VOL +** to select **24H** or **12H**, and then press **BRIGHTNESS**.
 - **24H**: 24-hour time format
 - **12H**: 12-hour time format↳ The hour digits begin to blink.
- 3 Press **-VOL/VOL +** to set the hour, and then press **BRIGHTNESS**.
↳ The minute digits begin to blink.
- 4 Press **-VOL/VOL +** to set the minute, and then press **BRIGHTNESS**.
↳ The set clock is displayed.



Tip

- The docking speaker can synchronize its clock with a connected iPod/iPhone.

4 Use your iPod/iPhone

An application **Philips ClockStudio** is available on Apple App Store for this product. To enjoy full features, download and install the application to your iPod/iPhone.

Compatible iPod/iPhone

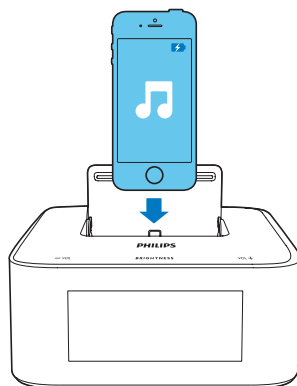
The docking speaker supports the following iPod/iPhone models.

Made for:

- iPhone 5
- iPod nano (7th generation)
- iPod touch (5th generation)

Listen to an iPod/iPhone playlist

- 1 Flip up the protective cover.
- 2 Connect your iPod/iPhone securely.



- ↳ Once the iPod/iPhone is recognized, the clock on your device is synchronized with your iPod/iPhone automatically.

- 3 Play a track on your iPod/iPhone.
↳ Music comes out through the docking speaker.

Charge the iPod/iPhone

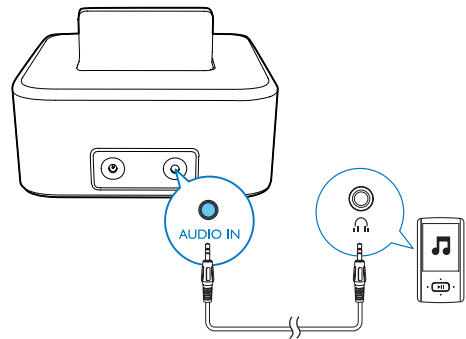
When this product is connected to power; the docked iPod/iPhone begins to charge.

5 Play from an external device

You can also listen to an external audio player through this product.

Note

- When an iPod/iPhone is docked and playing music, the docking speaker plays the audio input transferred through the dock. To play audio input that is transferred through the **AUDIO IN** socket, pause/stop the music play on the docked iPod/iPhone, or remove the iPod/iPhone.



- 1 Connect an audio input cable with a 3.5 mm connector on both ends between
 - the **AUDIO IN** socket on the back panel of this product, and
 - the audio output socket (usually the headphone socket) of the external audio player:
- 2 Play audio on the external audio player (refer to its user manual for details).

6 Adjust volume

During play, press **-VOL/VOL +** to decrease or increase the volume.

7 Adjust brightness

Press **BRIGHTNESS** to adjust the display brightness.

8 Product information

Note

- Product information is subject to change without prior notice.

General information

AC power adaptor	Model: AS100-050-AB200 (Philips) Input: 100-240 V, 50/60 Hz, 0.5 A Output: 5 V \equiv 2.0 A
Operation power consumption	< 10 W
Standby power consumption	< 1 W
Dimensions: main unit (W x H x D)	137 x 62 x 141 mm
Weight: main unit	0.54 kg

Amplifier

Rated output power	2 x 2 W RMS
Frequency response	125 - 16000 Hz, -3 dB
Signal to noise ratio	> 55 dBA
Total harmonic distortion	< 1%
AUDIO IN	650 mV RMS

Speakers

Speaker impedance	4 Ohm
Speaker driver	1.5" full range

9 Troubleshooting



Warning

- Never remove the casing of this product.

To keep the warranty valid, never try to repair the product yourself.

If you encounter problems when using this product, check the following points before requesting service. If the problem remains unsolved, go to the Philips Web page (www.philips.com/support). When you contact the Consumer Care, make sure that the product is nearby and the model number and serial number are available.

No power

- Make sure that the AC power plug of the unit is connected properly.
- Make sure that there is power at the AC outlet.

No sound or poor sound

- Adjust the volume of your docking speaker.
- Adjust the volume of your iPod/iPhone or external audio device.

Docked iPod/iPhone can't be charged.

- Make sure that the iPod/iPhone is compatible with this product.
- Make sure that the iPod/iPhone is securely docked.
- Remove the protective case of your iPod/iPhone.
- Make sure that the power supply is available.

Clock is reset.

- If power is interrupted, the clock on this device is reset.
- To synchronize the clock with your iPod/iPhone, make sure that the power is available, and then dock your iPod/iPhone again.

No response from the unit

- Disconnect and reconnect the AC power plug, and then turn on the docking speaker again.

10 Notice

Any changes or modifications made to this device that are not expressly approved by WOOX Innovations may void the user's authority to operate the equipment.

Disposal of your old product

Your product is designed and manufactured with high quality materials and components, which can be recycled and reused. Never dispose of your product with other household waste. Please inform yourself about the local rules on the separate collection of electrical and electronic products and batteries. The correct disposal of these products helps prevent potentially negative consequences on the environment and human health. Please visit www.recycle.philips.com for additional information on a recycling center in your area.

Environmental information

All unnecessary packaging has been omitted. We have tried to make the packaging easy to separate into three materials: cardboard (box), polystyrene foam (buffer) and polyethylene (bags, protective foam sheet.) Your system consists of materials which can be recycled and reused if disassembled by a specialized company. Please observe the local regulations regarding the disposal of packaging materials, exhausted batteries and old equipment.

Trademarks

Made for



iPod



iPhone

"Made for iPod" and "Made for iPhone" mean that an electronic accessory has been designed to connect specifically to iPod or iPhone respectively, and has been certified by the developer to meet Apple performance standards. Apple is not responsible for the operation of this device or its compliance with safety and regulatory standards. Please note that the use of this accessory with iPod or iPhone may affect wireless performance. iPod and iPhone are trademarks of Apple Inc., registered in the U.S. and other countries.

Copyright

2014 © WOOX Innovations Limited. All rights reserved.

Philips and the Philips' Shield Emblem are registered trademarks of Koninklijke Philips N.V. and are used by WOOX Innovations Limited under license from Koninklijke Philips N.V. Specifications are subject to change without notice. WOOX reserves the right to change products at any time without being obliged to adjust earlier supplies accordingly.



2014 © WOOX Innovations Limited. All rights reserved.
Philips and the Philips' Shield Emblem are registered
trademarks of Koninklijke Philips N.V. and are used by WOOX
Innovations Limited under license from Koninklijke Philips N.V.

DS125_93_UM_V2.0

