



Philips
Linea Lux design cordless
phone

25-min answering machine
1.6" display/white backlight
Handset speakerphone

M3451B



The purest line to connect

The sleek Philips Linea Lux cleverly integrates a light ring that glows in various colours to indicate different events. Soft ambient illumination can transform it into an ideal nightlight. Simply choose from 3 colours to enhance any space.

Outstanding design in high-quality execution

- Slender design and compact footprint for space efficiency
- Perfectly adjusted magnetic force ensures secure docking
- Calibrated keys for precise dialling
- Smart cable management maintains visual appeal from all angles
- Extra weight integrated in the base for greater stability
- Light ring for notifications and ambient/nightlight

Ultimate calling experience

- High-contrast 4.1-cm (1.6") 2-line reverse display
- Advanced sound testing and tuning for superb voice quality
- Handset speakerphone allows you to talk hands-free
- Save up to 50 of your favourite contacts in your phonebook
- Enjoy 16 hours of talk time on a single charge
- Up to 25-min. message on your answering machine

PHILIPS

Linea Lux design cordless phone
25-min answering machine 1.6" display/white backlight, Handset speakerphone

M3451B/90

Highlights

ECO+ mode

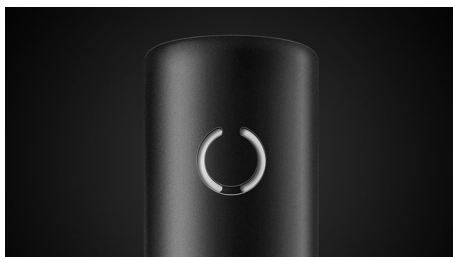


Philips phones are energy efficient and designed to be respectful to the environment. When ECO mode is activated the emitted radiation is reduced by up to 60%, and up to 95% when the phone is charging. With ECO+ mode activation the radiation drops to zero.

50-name phone book

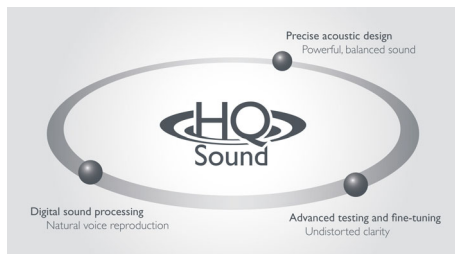
Save up to 50 of your favourite contacts in your phonebook

Handset speakerphone



Hands-free mode uses a built-in loudspeaker to amplify the voice of the caller, allowing you to speak and listen during a call without holding the phone to your ear. This is especially useful if you want to share the call with others or simply multitask.

Superb sound quality



HQ-Sound refers to high-quality acoustic engineering that results in voice quality so crisp and natural it is almost like being there in

person. High-quality components, precise acoustic design, advanced testing and fine tuning reflect decades of experience in high-end audio systems and headphones.

Up to 16 hours talk time

Enjoy 16 hours of talk time on a single charge

Up to 25-min. message

With up to 25 minutes' recording time on your answering machine, you'll never miss an important message.

Weighted base for stability

Extra weight integrated in the base for greater stability

Light ring



The smart light ring elegantly integrated at the base enhances both the Linea's design and functionality. Different colours glow to alert you to incoming and missed calls, voice messages and alarm. It also provides soft ambient light in standby mode with a choice of 3 colours, making it an ideal nightlight. You can also easily turn the light off via the fast access key on the handset keypad.

4.1-cm (1.6") reverse display



High-contrast, white-on-black reverse LCD display ensures easy reading and also blends well with the overall sleek design language.

Calibrated keypad



The calibrated and carefully designed keypad ensures precise dialling where you clearly feel every keystroke, whether you are dialling a number or entering a phonebook contact.

Compact footprint



Slender design and compact footprint for space efficiency

Perfect look from every angle



The smart cable management system cleverly hides the wires from sight. Intelligently designed concealed sockets and an internal cable guide ensure everything is clutter-free and neatly tucked away.

Specifications

Convenience

- Menu structure in the handset: List Menu
- Speakerphone — talk hands-free
- Signal strength indicator: 3-bar indicator
- Battery level indicator: 3-bar battery icon
- Date/Time display
- Programmable hot keys: Key 1 and 2
- Call Management: Call Waiting*, Caller ID*, Microphone mute, Missed Calls, Received Calls, Dialed calls
- Keypad lock
- Key tone on/off
- Auto hang up
- Multi-handset capability: Up to 4
- Backlit keypad: White
- Up to 16 hrs talk time
- Up to 180 hrs standby time
- Charge time: 8 hours
- Line cord length: 1.8 m
- Power cord length: 1.8 m
- Range: Open field < 300 m (984 ft); indoor < 50 m (164 ft)
- Alarm Clock
- Base Station keys: Paging key
- Event notifications: For Events status
- Illuminated keypad
- Number of keys: 20
- 3 ambient colours: In standby mode

Sound

- Ringtones on handset: 10 polyphonic
- HQ-Sound
- Volume control on handset

Picture/Display

- Display size: 4.1 cm (1.6")
- Display type: 1-line dot matrix + 1-line numeric + hard icons
- Backlight: Yes
- Backlight colour: White

Answering Machine

- Recording time capacity: Up to 25 minutes
- Pre-recorded OGM
- Answering machine control: From handset

Memory Capacity

- Phonebook: 50 names and numbers
- Redial List Capacity: 10 entries
- Call log entries: 20 entries
- Phonebook store in the base

Power

- Battery capacity: 550 mAh
- Battery type: 2 x AAA, NiMH rechargeable
- Mains power: AC 100 - 240 V ~50/60 Hz
- Power Consumption: <0.75 W

Security

- Transmission encryption

Network Features

- Compatible: GAP

SAR Value

- Philips handsets: < 0.1 W/kg

Eco Design

- Eco+
- Eco Mode: Automatic

Packaging dimensions

- EAN: 48 95185 62159 3
- Packaging dimensions (W x H x D):
12 x 22.5 x 10 cm
- Gross weight: 0.585 kg
- Net weight: 0.405 kg
- Number of products included: 1
- Packaging type: Carton
- Tare weight: 0.18 kg
- Type of shelf placement: Laying



Issue date 2016-11-18

Version: 1.1.5

12 NC: 8670 001 35783
EAN: 48 95185 62159 3

© 2016 Koninklijke Philips N.V.
All Rights reserved.

Specifications are subject to change without notice.
Trademarks are the property of Koninklijke Philips N.V.
or their respective owners.

www.philips.com

* *This feature requires additional subscription to Caller ID service.
Please check with your local network operator for details.