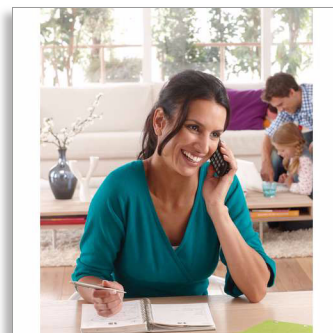




Philips BeNear
Cordless phone

- 1000-series
- Black



CD1901B

Bringing people closer

Keep it simple

Designed to be completely simple and user-friendly, this phone gives you all the benefits of long-lasting ergonomic comfort, and great sound reproduction. With easy installation, and an intuitive menu, it is simplicity itself.

Crystal clear sound

- The Parametric Equaliser delivers pure and clear sound
- Automatic Volume Control offsets unwanted volume variation
- Optimised antenna layout for great reception in any room
- Advanced sound testing and tuning for superb voice quality

Nice and simple

- Ultimate convenience through easy setup
- Easy to read 4.1 cm (1.6") display with amber backlight
- Save up to 50 of your favourite contacts in your phonebook
- Up to 16 hours of talk time
- Caller ID — so you always know who is calling

Eco-conscious product

- Up to 95% reduction of emitted radiation in charging mode
- Low power consumption: < 0.6 W in stand-by mode

PHILIPS

Highlights

Advanced sound testing



We test the sound quality of our DECT phones the same way as high-end headphone manufacturers do. Using an advanced ear simulator, we can accurately re-create the way people actually hear. This helps our acoustic engineers to measure and fine-tune things like frequency response, distortion and overall hearing perception, to create perfect voice reproduction for both handset and hands-free modes.

Parametric Equaliser



Our telephones use parametric equalisation in the digital sound processing to fine tune the sound response back to the intended linear frequency response curve, delivering sound that is pure and clear, for each conversation.

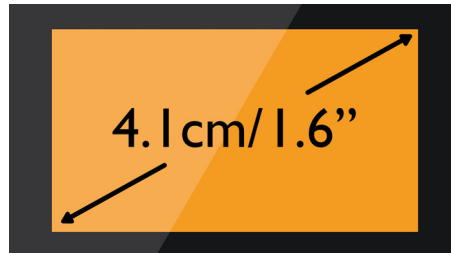
Automatic Volume Control



Automatic Volume Control offsets variations in sound signal, which can be caused by

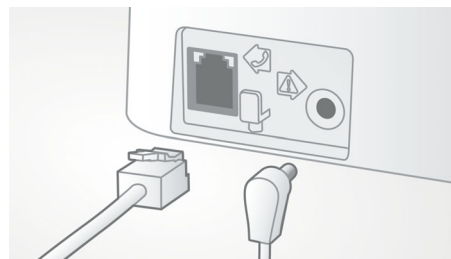
distance, signal strength or the caller's phone — so what you hear always remains consistent. Reducing the audio amplification for strong signals, and increasing it for weak ones, means you can enjoy a smooth conversation without unwanted sound volume variation.

4.1 cm (1.6") display



Easy to read 4.1 cm (1.6") display with amber backlight

Easy setup



Ultimate convenience through easy set up.
Simplified installation - Plug and Play product

50-name phone book



Always have the phone numbers of your loved ones available: Save up to 50 names in your phonebook.

Caller ID



Sometimes it's good to know who's calling before you answer. And our Caller ID lets you keep track of who's on the other end of the line.

Optimised antenna layout



Our optimised antenna layout ensures strong and stable reception, even in areas of the house where cordless transmission is difficult. Now you can take a call wherever you are in the house, and enjoy a long, uninterrupted conversation even as you walk around.

Low power consumption: < 0.6 W



Philips phones are energy efficient and are designed to be respectful to the environment. The power consumed in stand-by mode is now less than < 0.6 W.

Specifications

Sound

- Volume control on handset
- Ringtones on handset: 10 standard

Picture/Display

- Display size: 4.1 cm/1.6"
- Display type: Black and White; alphanumeric
- Backlight: Yes
- Backlight colour: Amber

Convenience

- Menu structure in the handset: List Menu
- Signal strength indicator: 3- bar indicator
- Battery level indicator: 3- bar battery icon
- Date/Time display
- Base Station keys: Paging key
- Programmable hot keys: Key 1 and 2
- Auto Registration
- Auto hang up
- Key tone on/off
- Call Management: Call Waiting, Caller ID, Microphone mute, Missed Calls, Received Calls
- Multi-base capability: 1
- Multi-handset capability: Up to 4
- Line cord length: 1.8 m
- Power cord length: 1.8 m
- Charge time: 8 hours

- Up to 16 hrs talk time
- Up to 250 hrs standby time
- Range: Open field <300 m; indoor <50 m

Memory Capacity

- Phonebook: 50 names and numbers
- Redial List Capacity: 10 entries
- Call log entries: 20 entries
- Phonebook store in the base

Power

- Battery capacity: 600 mAh
- Battery type: AAA NiMH Rechargeable
- Mains power: AC 100-240 V ~50/60 Hz
- Power Consumption: < 0.6 W

Security

- Transmission encryption: Yes

Network Features

- Compatible: GAP

SAR Value

- Philips handsets: <0.1 W/kg

Eco Design

- EcoMode: automatic



Issue date 2013-07-19

Version: 3.1.6

12 NC: 8670 000 79746
EAN: 87 12581 61206 1

© 2013 Koninklijke Philips N.V.
All Rights reserved.

Specifications are subject to change without notice.
Trademarks are the property of Koninklijke Philips N.V.
or their respective owners.

www.philips.com