



Philips
Earbud headphones

14.8-mm drivers/open-back
Ear bud



SHE3010TL



Extra bass

Soft body for comfy fit

Philips SHE3010 headphones with soft body earbuds offer a soft, comfortable fit. Available in vibrant, eye-catching colours to match your style.

Enjoy quality sound

- 14.8-mm (0.6") speaker drivers for high quality sound
- Neodymium magnets enhance bass performance and sensitivity

Ultimate wearing comfort

- Rubberised front caps for wearing comfort
- Soft body ensures a comfortable fit

Design for convenience

- Flexi-Grip design for durability

PHILIPS

Earbud headphones
14.8-mm drivers/open-back Ear bud

Specifications

Design

- Colour: Teal

Sound

- Acoustic system: open
- Magnet type: Neodymium
- Voice coil: copper
- Diaphragm: PET
- Impedance: 16 ohm
- Maximum power input: 25 mW
- Sensitivity: 107 dB
- Speaker diameter: 14.8 mm
- Type: Dynamic
- Frequency response: 9 - 22 000 Hz

Connectivity

- Cable Connection: two-parallel, symmetric
- Cable length: 1 m
- Connector: 3.5 mm
- Finishing of connector: nickel plated
- Type of cable: copper

Packaging dimensions

- Packaging dimensions (W x H x D):
5.2 x 17.5 x 2.8 cm
- Gross weight: 0.03217 kg
- Net weight: 0.01167 kg

- Number of products included: 1
- Packaging type: Blister
- Tare weight: 0.0205 kg
- Type of shelf placement: Both
- EAN: 69 25970 70196 9

Inner Carton

- Gross weight: 0.12351 kg
- Inner carton (L x W x H): 17.9 x 8 x 6 cm
- Net weight: 0.03501 kg
- Number of consumer packages: 3
- Tare weight: 0.0885 kg
- GTIN: 2 69 25970 70196 3

Outer Carton

- Gross weight: 1.21708 kg
- Outer carton (L x W x H): 34.5 x 19.7 x 16.3 cm
- Net weight: 0.28008 kg
- Number of consumer packages: 24
- Tare weight: 0.937 kg
- GTIN: 1 69 25970 70196 6

Product dimensions

- Product dimensions (W x H x D):
1.6 x 2.1 x 1.25 cm
- Weight: 0.01167 kg

SHE3010TL/00

Highlights

Flexi-Grip

A soft, flexible part protects the cable connection from damage that otherwise would occur due to repeated bending.

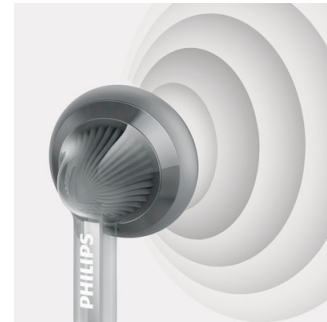
Neodymium magnets

Neodymium is the best material for producing a strong magnetic field for greater sensitivity in a voice coil, better bass response and higher overall sound quality.

Soft body

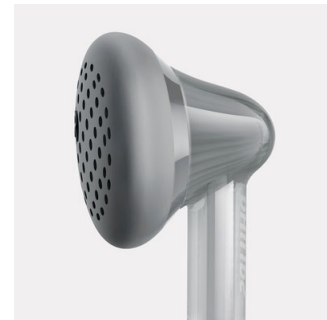
The transparent, rubberised headphone body moulds itself to the shape of the ear for comfortable listening.

14.8-mm (0.6") speakers



Large 14.8-mm (0.6") speaker drivers squeezed into earbud headphones deliver high quality sound.

Rubberised front cap



A rubberised front cap provide a totally soft body for wearing comfort.



Issue date 2022-05-11

Version: 3.2.5

12 NC: 8670 001 17081
EAN: 06 92597 07019 69

© 2022 Koninklijke Philips N.V.
All Rights reserved.

Specifications are subject to change without notice.
Trademarks are the property of Koninklijke Philips N.V.
or their respective owners.

www.philips.com