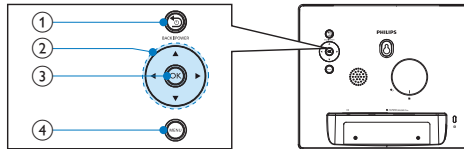
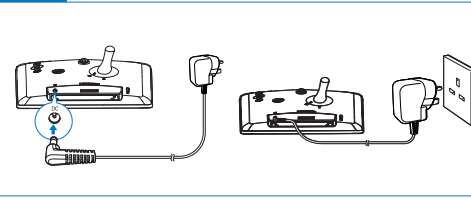
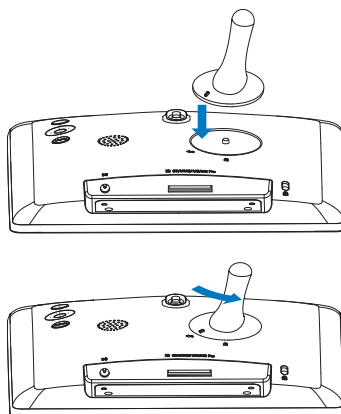




EN User manual

**PHILIPS**



- 1 Hold to turn on/off the PhotoFrame  
Press to go to the home screen  
Press to go back
- 2 Press to select the upper/lower/right/left option
- 3 Press to play/pause slideshow  
Press to confirm a selection
- 4 Press to enter/exit a menu

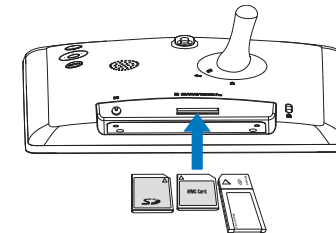


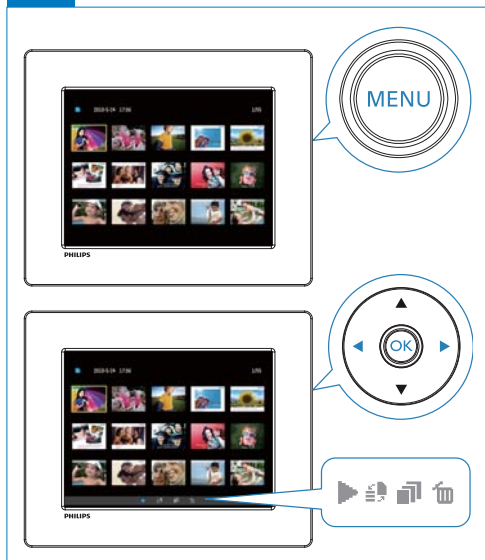
#### Adjust settings

- 1 In the home menu, press **◀/▶** to select **[Settings]**, and then press **OK**.  
→ The setup menu is displayed.
- 2 Press **▲/▼/◀/▶** to select an option and press **OK** to confirm.

Menu options	Function
[Language]	Select on-screen display language.
[Brightness]	Select display brightness level.
[Set Time]	Set the clock time.
[Set Date]	Set the date.
[Set Off-Time]	Set the auto-off time.
[Set On-Time]	Set the auto-on time.
[Slideshow Interval]	Select the slideshow display interval.
[Transition Effect]	Select the slideshow transition effect.
[Info]	Display the general information of the PhotoFrame.
[Default Settings]	Restore default settings.

3 Press **BACK|POWER** to exit.





For detailed instructions for use, please visit [www.philips.com/support](http://www.philips.com/support).

## Safety

### Safety precautions and maintenance

- Never touch, push, rub or strike the screen with hard objects as this may damage the screen permanently.
- When the product is not used for long periods, unplug it.
- Before you clean the screen, turn off and unplug the power cord. Only clean the screen with a soft, water-damp cloth. Never use substances such as alcohol, chemicals or household cleaners to clean the product.
- Never place the product near naked flames or other heat sources, including direct sunlight.
- Never expose the product to rain or water. Never place liquid containers, such as vases, near the product.
- Never drop the product. When you drop the product, it will be damaged.
- Ensure that you install and use services or software only from trustworthy sources free of virus or harmful software.
- This product is designed for indoor use only.
- Only use the supplied power adaptor for the product.

### Notice

This product is in compliance with the essential requirements and other relevant provisions of Directives 2006/95/EC (Low Voltage), 2004/108/EC (EMC).



### Respect copyrights

The making of unauthorized copies of copy-protected material, including computer programs, files, broadcasts and sound recordings, may be an infringement of copyrights and constitute a criminal offence. This equipment should not be used for such purposes.



### End of life disposal

- Your new product contains materials that can be recycled and reused. Specialized companies can recycle your product to increase the amount of reusable materials and to minimize the amount to be disposed of.
- Please find out about the local regulations on how to dispose your old monitor from your local Philips dealer.
- (For customers in Canada and U.S.A.) Dispose the old product in accordance to local-state and federal regulations.

For additional information on recycling contact [www.eia.org](http://www.eia.org) (Consumer Education Initiative).

### Recycling Information for Customers

Philips establishes technically and economically viable objectives to optimize the environmental performance of the organization's product, service and activities.

From the planning, design and production stages, Philips emphasizes the importance of making products that can easily be recycled. At Philips, end-of-life management primarily entails participation in national take-back initiatives and recycling programs whenever possible, preferably in cooperation with competitors.

There is currently a system of recycling up and running in the European countries, such as The Netherlands, Belgium, Norway, Sweden and Denmark.

In U.S.A., Philips Consumer Lifestyle North America has contributed funds for the Electronic Industries Alliance (EIA) Electronics Recycling Project and state recycling initiatives for end-of-life electronics products from household sources. In addition, the Northeast Recycling Council (NERC) - a multi-state non-profit organization focused on promoting recycling market development - plans to implement a recycling program. In Asia Pacific, Taiwan, the products can be taken back by Environment Protection Administration (EPA) to follow the IT product recycling management process, detail can be found in web site [www.epa.gov.tw](http://www.epa.gov.tw).

### Environmental information

Your product is designed and manufactured with high quality materials and components, which can be recycled and reused.



When you see the crossed-out wheel bin symbol attached to a product, it means the product is covered by the European Directive 2002/96/EC:

Never dispose of your product with other household waste. Please inform yourself about the local rules on the separate collection of electrical and electronic products. The correct disposal of your old product helps prevent potentially negative consequences on the environment and human health.



### Banned Substance Declaration

This product complies with RoHS.



© 2011 Koninklijke Philips Electronics N.V.  
All rights reserved.

Specifications are subject to change without notice. Trademarks are the property of Koninklijke Philips Electronics N.V. or their respective owners.



SPF1208\_05\_UM\_V2.0