

Always there to help you

Register your product and get support at
www.philips.com/welcome



ORD7100R



User manual

PHILIPS

Contents

1	Safety	2		
	Know these safety symbols	2		
	Important Safety Instructions	2		
2	Your docking system	4		
	Introduction	4		
	What's in the box	4		
	Overview of the system	5		
3	Connect the FM antenna and power cord	6		
4	Power on and select a source	7		
5	Set the clock	7		
6	Use the dock	8		
	Compatible iPod/iPhone models	8		
	Enjoy audio through the dock	8		
	Charge your iPod/iPhone	9		
	Undock your iPod/iPhone	9		
7	Listen to FM radio	9		
	Search for a radio station automatically	9		
	Search for a radio station manually	9		
	Store radio stations automatically	9		
	Store radio stations manually	10		
8	Listen to an external device	10		
9	Adjust the volume	11		
10	Use the remote control	11		
	Activate the battery	11		
	Control play	11		
	Replace the battery	12		
11	Troubleshooting	13		
12	Product information	14		
	Amplifier	14		
	FM Tuner	14		
	Speakers	14		
	General information	14		
13	Notice	15		
	Compliance	15		
	Care of the environment	15		
	Trademark notice	15		
	Copyright	15		

1 Safety

Read and understand all instructions before you use this product. If damage is caused by failure to follow the instructions, the warranty does not apply.

Know these safety symbols



This 'bolt of lightning' indicates uninsulated material within your unit may cause an electrical shock. For the safety of everyone in your household, please do not remove product covering.

The 'exclamation mark' calls attention to features for which you should read the enclosed literature closely to prevent operating and maintenance problems.

WARNING: To reduce the risk of fire or electric shock, this apparatus should not be exposed to rain or moisture and objects filled with liquids, such as vases, should not be placed on this apparatus.

CAUTION: To prevent electric shock, fully insert the plug.

Important Safety Instructions

- ① Read these instructions.
- ② Keep these instructions.
- ③ Heed all warnings.
- ④ Follow all instructions.
- ⑤ Do not use this apparatus near water.
- ⑥ Clean only with dry cloth.
- ⑦ Do not block any ventilation openings. Install in accordance with the manufacturer's instructions.
- ⑧ Do not install near any heat sources such as radiators, heat registers, stoves, or other apparatus (including amplifiers) that produce heat.
- ⑨ Protect the power cord from being walked on or pinched, particularly at plugs, convenience receptacles, and the point where they exit from the apparatus.
- ⑩ Only use attachments/accessories specified by the manufacturer.
- ⑪ Unplug this apparatus during lightning storms or when unused for long periods of time.
- ⑫ Refer all servicing to qualified service personnel. Servicing is required when the apparatus has been damaged in any way, such as power-supply cord or plug is damaged, liquid has been spilled or objects have fallen into the apparatus, the apparatus has been exposed to rain or moisture, does not operate normally, or has been dropped.
- ⑬ **Battery usage CAUTION – To prevent battery leakage which may result in bodily injury, property damage, or damage to the unit:**
 - Install the battery correctly, + and - as marked on the unit.
 - Remove the battery when the unit is not used for a long time.
- ⑭ Apparatus shall not be exposed to dripping or splashing, keep it away from direct sunlight, naked flames or heat.
- ⑮ Where the mains plug or an appliance coupler is used as the disconnect device, the disconnect device shall remain readily operable.
- ⑯ Risk of swallowing coin battery!

- The device may contain a coin/button type battery, which can potentially be swallowed. Keep the battery out of reach of children at all times! If swallowed, the battery can cause serious injury or death. Severe internal burns can occur within two hours of ingestion.
- If you suspect that a battery has been swallowed or placed inside any part of the body, seek immediate medical attention.
- When you change the batteries, always keep all new and used batteries out of reach of children. Make sure that the battery compartment is completely secure after you replace the battery.
- If the battery compartment cannot be completely secured, discontinue use of the product. Keep out of reach of children and contact the manufacturer.

Information about the use of batteries:



Caution

- Risk of leakage: Only use the specified type of batteries. Observe correct polarity. Remove the battery from products that are not in use for a longer period of time. Store batteries in a dry place.
- Risk of injury: Wear gloves when handling leaking batteries. Keep batteries out of reach of children and pets.
- Risk of explosion: Do not short circuit batteries. Do not expose batteries to excessive heat such as sunshine, fire or the like. Do not throw batteries into the fire. Do not damage or disassemble batteries. Do not recharge non-rechargeable batteries.
- Danger of explosion if battery is incorrectly replaced. Replace only with the same or equivalent type.



Note

- The type plate is located on the back of the product.



Warning

- Never remove the casing of this apparatus.
- Never lubricate any part of this apparatus.
- Never place this apparatus on other electrical equipment.
- Ensure that you always have easy access to the power cord, plug or adaptor to disconnect this apparatus from the power.

Risk of overheating! Never install this apparatus in a confined space. Always leave a space of at least four inches around this apparatus for ventilation. Ensure curtains or other objects never cover the ventilation slots on this apparatus.

2 Your docking system

Congratulations on your purchase, and welcome to Philips! To fully benefit from the support that Philips offers, register your product at www.philips.com/welcome.

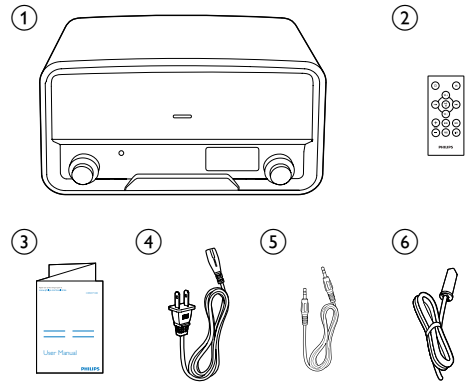
Introduction

With this system, you can:

- enjoy audio from an iPod/iPhone or external device,
- charge your iPod/iPhone, and
- listen to FM radio stations.

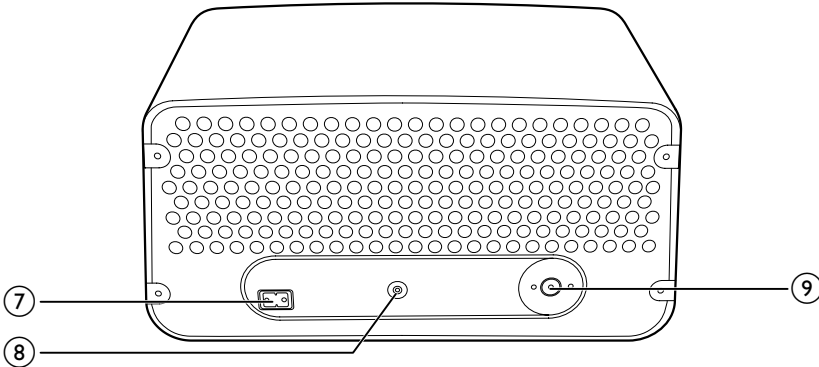
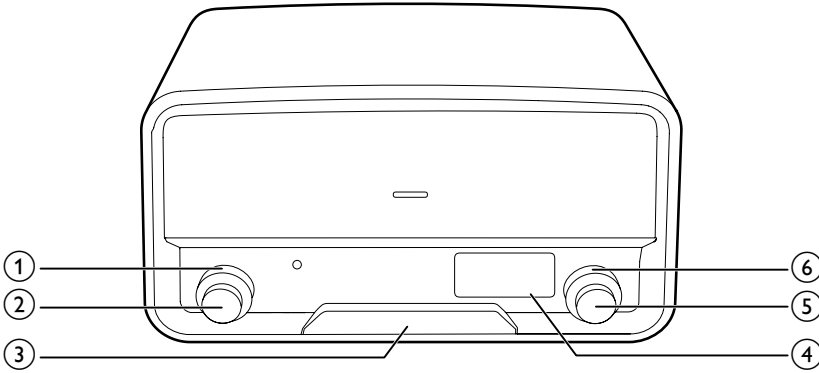
What's in the box

Check and identify the contents of the package:



- ① Docking speaker
- ② Remote control
- ③ User manual
- ④ AC power cord
- ⑤ MP3 link cable
- ⑥ FM antenna

Overview of the system



① SOURCE

- Turn to select a source.
- Turn to switch the system from standby mode to normal mode.

② POWER VOLUME

- Press to switch the system between standby mode and normal mode.
- Turn to adjust the volume.

③ Dock for iPod/iPhone

④ LCD screen

⑤ SELECT

- In radio mode, turn to search for a radio station manually.

- In radio mode, press and hold to activate the automatic search for and storage of radio stations.
- For a compatible iPod/iPhone, press to pause or resume music play.
- For a compatible iPod/iPhone, press and hold to switch it to sleep mode, or press to wake it up.

⑥ PRESET

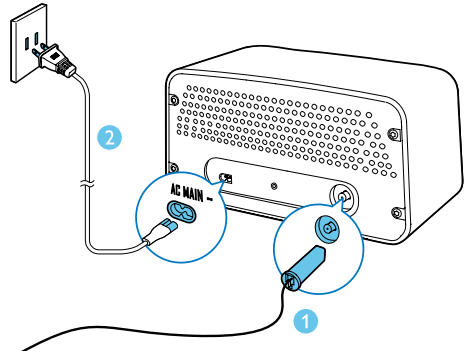
- Turn to select a preset radio station.

⑦ AC MAIN~

- Connect to the AC power cord.

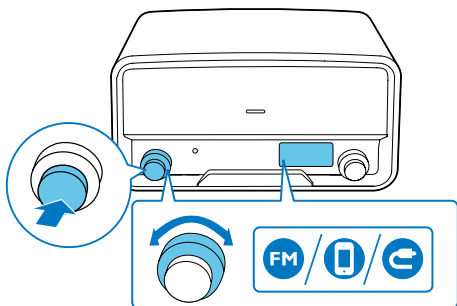
- ⑧ **MP3-LINK**
 - Connect to an external player by an MP3 link cable.
- ⑨ **Socket for FM antenna**
 - Connect to an FM antenna.

3 Connect the FM antenna and power cord



- 1 Connect the FM antenna to the product.
- 2 Connect the AC power cord to the **AC MAIN~** socket and then to the wall outlet.

4 Power on and select a source



To power on the product,

- press the **POWER VOLUME** knob,
- turn the **SOURCE** knob on the product, or
- press **⏻** on the remote control.
 - ↳ The product switches to the last selected source.
- To switch the product to standby mode, press the **POWER VOLUME** knob or **⏻** again.

To select a source,

- turn the **SOURCE** knob on the product, or
- press the **SRC** button on the remote control repeatedly.
 - FM radio: **FM** is highlighted, and the frequency of the current FM radio station is displayed.
 - iPod/iPhone: **i** is highlighted, and **iPod - iPHONE** scrolls.
 - External device: **C** is highlighted, and **AVH** is displayed.

5 Set the clock

- 1 In standby mode, press and hold the **SELECT** knob for two seconds.
 - ↳ **24H** is displayed with **24** blinking.
- 2 Turn the **SELECT** knob to select a time format, and then press the **SELECT** knob to confirm.
 - **24H**: 24-hour time format
 - **12H**: 12-hour time format
 - ↳ The hour digits blink.
- 3 Turn the **SELECT** knob to set the hour, and then press the **SELECT** knob to confirm.
 - ↳ The minute digits blink.
- 4 Turn the **SELECT** knob to set the minute, and then press the **SELECT** knob to confirm.
 - ↳ The set time is displayed.

Tip

- Once your iPod/iPhone is connected and recognized, the clock on the product is synchronized with the iPod/iPhone.

6 Use the dock

You can enjoy audio from a compatible iPod/iPhone through this product.

An application **Philips HomeStudio** is available on Apple App Store for this product. To enjoy full features, download and install the application to your iPod/iPhone.

Note

- During play, no audio signals are transferred through the headphone socket of your iPod/iPhone.
- Once your iPod/iPhone is connected and recognized, the product synchronizes its clock with the iPod/iPhone automatically.

Compatible iPod/iPhone models

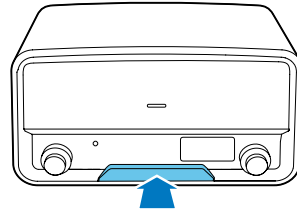
This product supports the following iPod and iPhone models.

Made for

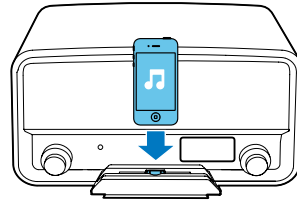
- iPod touch (2nd, 3rd, and 4th generation)
- iPod classic
- iPod nano (2nd, 3rd, 4th, 5th, and 6th generation)
- iPhone 4S
- iPhone 4
- iPhone 3GS
- iPhone 3G

Enjoy audio through the dock

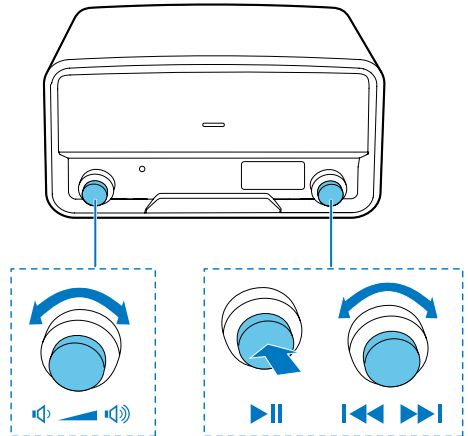
- 1 Switch the source to **iPod/iPHONE**.
- 2 Push the dock tray to eject it.



- 3 Connect your iPod/iPhone to the dock.



- 4 Play a track on your iPod/iPhone.



- To start, pause, or resume play, press the **SELECT** knob.
- To skip to a track, turn the **SELECT** knob.
- To switch the iPod/iPhone to sleep mode or wake it up, press and hold the **SELECT** knob.

Charge your iPod/iPhone

Once the iPod/iPhone is docked and recognized, the charging starts.

Undock your iPod/iPhone

Note

- Risk of damage to the dock or your iPod/iPhone: Do not twist or shake your iPod/iPhone.

- 1 Disconnect the iPod/iPhone from the dock.
- 2 Push the dock tray inwards until you hear a "click" to store it.

7 Listen to FM radio

Note

- For optimal reception, fully extend the antenna and adjust its position, or connect an outdoor antenna.
- This system does not support MW (medium wave) radio reception.
- You can store up to 20 stations for each band.

Search for a radio station automatically

Turn the **SELECT** knob clockwise or anti-clockwise, and then press the **SELECT** knob in two seconds.

↳ **SEARCH** is displayed, and then the radio frequency changes until a strong station is detected.

- To stop the search, press the **SELECT** knob again.

Search for a radio station manually

Turn the **SELECT** knob until the frequency of target radio station is displayed.

Store radio stations automatically

Press and hold the **SELECT** knob until **PRESET** is displayed.

↳ After the search is complete, the first stored radio station is broadcast.

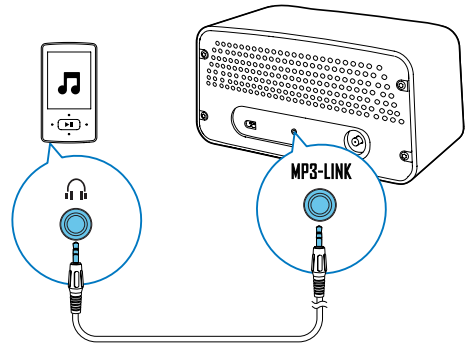
- To tune to a stored radio station, turn the **PRESET** knob until its sequence number is displayed.

Store radio stations manually

- 1 Tune to the target radio station.
- 2 After two seconds, press the **SELECT** knob.
↳ **PXX** is displayed with **XX** blinking (**XX** indicates the sequence number).
- 3 Turn the **PRESET** knob to select a sequence number.
- 4 Press the **SELECT** knob to confirm.
- 5 Repeat steps 1-4 to store more radio stations.
 - To overwrite a preset radio station, store another station with its sequence number.
 - To tune to a stored radio station, turn the **PRESET** knob until its sequence number is displayed.

8 Listen to an external device

You can also listen to an external audio device, for example, MP3 player, through this product.



- 1 Switch the source to **AUX**.
- 2 Connect the MP3 link cable between
 - the **MP3-LINK** socket on the back panel of this product, and
 - the headphone jack on the external device.
- 3 Play audio on the external device (refer to its user manual).

9 Adjust the volume

Turn the **POWER VOLUME** knob.

10 Use the remote control

During use, you can use the remote control to control play.

Activate the battery

For the first time use, pull the protective tab out from the battery compartment.

Control play

During play, follow the instructions below to control play.

FM mode

Buttons	Functions
◀◀ / ▶▶	To tune to a specific radio station, press repeatedly until its frequency is displayed.
◀◀ / ▶▶	To tune to the previous or next strong radio station, press and hold to start scanning.
PRESET +/-	To tune to a preset radio station, press repeatedly until its sequence number and frequency are displayed.
PROG	To program radio stations, 1 Tune to the radio station that you want to store. 2 Press PROG to activate the programming. 3 Press PRESET +/- to select a sequence number. 4 Press PROG to confirm. 5 Repeat the steps 1-4 to program more radio stations.
DISP	To display the clock or current frequency, press it.

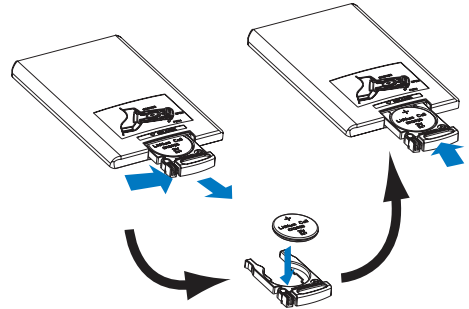
DOCK mode

Buttons	Functions
▶ OK	To start, pause, or resume play, press it.
▶ OK	To switch the iPod/iPhone to sleep mode or wake it up, press and hold it.
◀◀ / ▶▶	To skip to a track, press repeatedly.
◀◀ / ▶▶	To rewind a track or search forward fast, press and hold.
MENU	To select a track from the library, <ol style="list-style-type: none">1 Press MENU to access the iPod/Music (iPod/Music) menu of your iPod/iPhone.2 Press MENU repeatedly to toggle through the categories.3 Press ◀◀ / ▶▶ to toggle through sub-categories or select a track.4 Press ▶ OK to enter lower-level menu or start the selected track.

Volume

Buttons	Functions
VOL+ / VOL-	To increase or decrease the volume, press repeatedly.
MUTE	To mute the product or release it from mute status, press the button.

Replace the battery



- 1 Pull out the battery tray and then remove the flat battery.
- 2 Insert one CR2025 battery with correct polarity (+/-) as indicated.
- 3 Insert the battery tray.

11 Troubleshooting

Warning

- Never remove the casing of this product.

To keep the warranty valid, never try to repair the product yourself.

If you encounter problems when using this product, check the following points before requesting service. If the problem remains unsolved, go to the Philips Web page (www.philips.com/support). When you contact Philips, make sure that the product is nearby and the model number and serial number are available.

Problem	Solution
No power	Make sure that the AC power cord is connected properly.
	Make sure that there is power at the AC power outlet.
	If a connected iPod/iPhone stays inactive for 15 minutes when it is selected as the source, the system switches to standby mode automatically.
No sound or poor sound	Adjust the volume.
	Press MUTE to release the speakers from mute status.
No response from the product	Reconnect the AC power cord, and then turn on the product again.
	If a connected iPod/iPhone stays inactive for 15 minutes when it is selected as the source, the system switches to standby mode automatically.
Remote control does not work	Before you press any function button, select the correct source with the remote control instead of the system.
	Reduce the distance between the remote control and the system.
	Insert the battery with its polarity (+/- signs) aligned as indicated.
	Replace the battery.
	Aim the remote control at the iR sensor on the front panel of the system.
Poor radio reception	Increase the distance between the product and other electrical appliances.
	Fully extend the antenna.
	Connect an outdoor FM antenna instead.
Clock is erased	Power has been interrupted or the AC power cord has been disconnected.
	Reset the clock.

12 Product information



Note

- Product information is subject to change without prior notice.

General information

AC Power Rating	100-240V~, 50/60 Hz
Operation Power Consumption	15 W
Dimensions (Main Unit)	325 x 175 x 167 mm
Weight (Main Unit)	3.5 kg

Amplifier

Frequency Response	60 Hz - 16 kHz, ±3 dB
Signal to Noise Ratio	> 70 dBA
Aux Input	0.5 V RMS 10 kOhm

FM Tuner

Tuning Range	87.50 - 108.00 MHz
Tuning grid	100 kHz
Total Harmonic Distortion	< 2%
Signal to Noise Ratio	> 50 dBA
Number of preset radio stations	20

Speakers

Speaker Impedance	6 Ohm
Speaker Driver	2 X 3" full range
Sensitivity	> 82 dB/m/W

13 Notice

Any changes or modifications made to this device that are not expressly approved by Philips Consumer Lifestyle may void the user's authority to operate the equipment.

Compliance

Class II equipment symbol:



CLASS II apparatus with double insulation, and no protective earth provided.

Care of the environment



Your product is designed and manufactured with high quality materials and components, which can be recycled and reused. Never dispose of your product with other household waste. Please inform yourself about the local rules on the separate collection of electrical and electronic products and batteries. The correct disposal of these products helps prevent potentially negative consequences on the environment and human health.

Your product contains batteries, which cannot be disposed of with normal household waste. Please inform yourself about the local rules on separate collection of batteries. The correct disposal of batteries helps prevent potentially negative consequences on the environment and human health.

Please visit www.recycle.philips.com for additional information on a recycling center in your area.

Environmental information

All unnecessary packaging has been omitted. We have tried to make the packaging easy to separate into three materials: cardboard (box), polystyrene foam (buffer) and polyethylene (bags, protective foam sheet.)

Your system consists of materials which can be recycled and reused if disassembled by a specialized company. Please observe the local regulations regarding the disposal of packaging materials, exhausted batteries and old equipment.

Trademark notice



"Made for iPod" and "Made for iPhone" mean that an electronic accessory has been designed to connect specifically to iPod or iPhone respectively, and has been certified by the developer to meet Apple performance standards. Apple is not responsible for the operation of this device or its compliance with safety and regulatory standards. Please note that the use of this accessory with iPod or iPhone may affect wireless performance. iPod and iPhone are trademarks of Apple Inc., registered in the U.S. and other countries.

Copyright

2013 © Koninklijke Philips Electronics N.V. Specifications are subject to change without notice. Trademarks are the property of Koninklijke Philips Electronics N.V or their respective owners. Philips reserves the right to change products at any time without being obliged to adjust earlier supplies accordingly.



Specifications are subject to change without notice
© 2013 Koninklijke Philips Electronics N.V.
All rights reserved.

ORD7100R_85_UM_V1.0

