

Always there to help you

Register your product and get support at
www.philips.com/support



AJ3116



User manual

PHILIPS

Contents

1	Important	2
----------	------------------	----------

2	Notice	3
----------	---------------	----------

3	Your clock radio	4
	Introduction	4
	What's in the box	4
	Overview of the clock radio	5

4	Get started	6
	Install battery	6
	Connect power	6
	Set time	6

5	Listen to FM radio	7
	Tune to FM radio stations	7
	Store FM radio stations manually	7
	Select a preset radio station	7
	Adjust volume	7

6	Other features	8
	Set alarm timer	8
	Set sleep timer	8

7	Product information	10
	Specifications	10

8	Troubleshooting	11
----------	------------------------	-----------

1 Important



Warning

- Never remove the casing of this clock radio.
 - Never lubricate any part of this clock radio.
 - Never place this clock radio on other electrical equipment.
 - Keep this clock radio away from direct sunlight, naked flames or heat.
 - Make sure that you always have easy access to the power cord, plug or adaptor to disconnect the clock radio from the power.
- Read these instructions.
 - Heed all warnings.
 - Follow all instructions.
 - Do not block any ventilation openings. Install in accordance with the manufacturer's instructions.
 - Do not install near any heat sources such as radiators, heat registers, stoves, or other apparatus (including amplifiers) that produce heat.
 - Protect the power cord from being walked on or pinched, particularly at plugs, convenience receptacles, and the point where they exit from the clock radio.
 - Only use attachments/accessories specified by the manufacturer.
 - Unplug this apparatus during lightning storms or when unused for long periods of time.
 - Refer all servicing to qualified service personnel. Servicing is required when the apparatus has been damaged in any way, such as power-supply cord or plug is damaged, liquid has been spilled or objects have fallen into the apparatus, the apparatus has been exposed to rain or moisture, does not operate normally, or has been dropped.
 - Battery usage CAUTION – To prevent battery leakage which may result in bodily injury, property damage, or damage to the clock radio:
 - Install all batteries correctly, + and - as marked on the unit.
 - Remove batteries when the unit is not used for a long time.
 - The battery shall not be exposed to excessive heat such as sunshine, fire or the like.
 - This clock radio shall not be exposed to dripping or splashing.
 - Do not place any sources of danger on the clock radio (e.g. liquid filled objects, lighted candles).
 - Where the plug of the Direct Plug-in Adapter is used as the disconnect device, the disconnect device shall remain readily operable.

2 Notice

Any changes or modifications made to this device that are not expressly approved by WOOX Innovations may void the user's authority to operate the equipment.



This product complies with the radio interference requirements of the European Community.

Disposal of your old product



Your product is designed and manufactured with high quality materials and components, which can be recycled and reused.



This symbol on a product means that the product is covered by European Directive 2012/19/EU. Inform yourself about the local separate collection system for electrical and electronic products. Follow local rules and never dispose of the product with normal household waste. Correct disposal of old products helps prevent negative consequences for the environment and human health.

Environmental information

All unnecessary packaging has been omitted. We have tried to make the packaging easy to separate into three materials: cardboard (box), polystyrene foam (buffer) and polyethylene (bags, protective foam sheet.)

Your system consists of materials which can be recycled and reused if disassembled by a specialized company. Please observe the local regulations regarding the disposal of packaging materials, exhausted batteries and old equipment.



The Bluetooth® word mark and logos are registered trademarks owned by Bluetooth SIG, Inc. and any use of such marks by Philips is under license.

3 Your clock radio

Congratulations on your purchase, and welcome to Philips! To fully benefit from the support that Philips offers, register your product at www.philips.com/welcome.

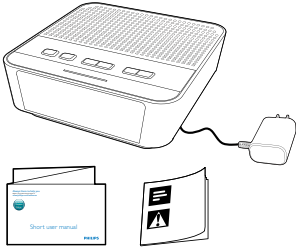
Introduction

With this clock radio, you can

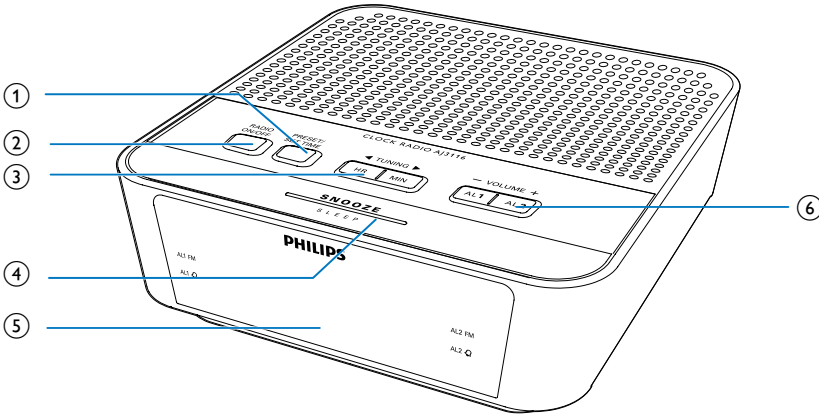
- listen to FM radio;
- set two alarms to ring at different time.

What's in the box

Check and identify the contents of your package.



Overview of the clock radio



① PRESET/SET TIME

- Store radio stations in memory.
- Select a preset radio station.
- Set time.

② RADIO ON/OFF

- Press to turn on or off the radio.

③ HR/MIN/ ◀ TUNING ▶

- Tune to FM radio stations.
- Set hour and minute.

④ SNOOZE/SLEEP

- Snooze alarm.
- Set the sleep timer.

⑤ Display panel

- Display current status.

⑥ AL1/AL2/- VOLUME +

- Set alarm.
- Adjust volume.

4 Get started

Always follow the instructions in this chapter in sequence.

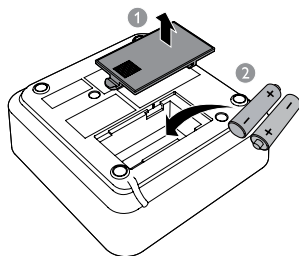
Install battery

The batteries can only back up clock and alarm settings.

! Caution

- Risk of explosion! Keep the batteries away from heat, sunshine or fire. Never discard batteries in fire.
- The batteries contains chemical substances, so it should be disposed of properly.

Insert 2 AAA batteries with correct polarity (+/-) as illustrated.



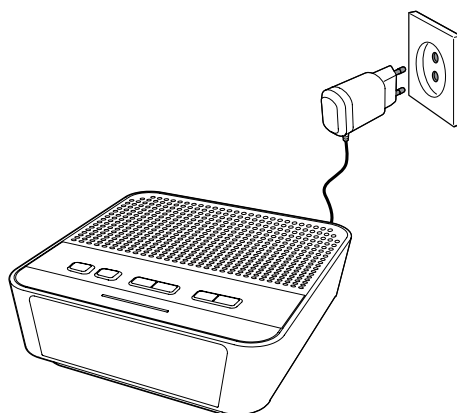
Connect power

! Caution

- Risk of product damage! Make sure that the power voltage corresponds to the voltage printed on the back or underside of the clock radio.
- Risk of electric shock! When you unplug the power adapter; always pull the plug from the socket. Never pull the cord.

≡ Note

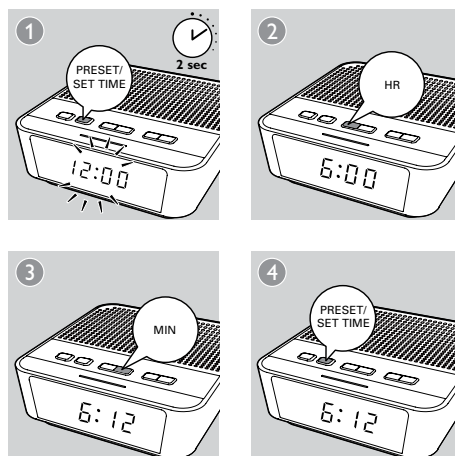
- The type plate is located at the bottom of the clock radio.



Set time

≡ Note

- You can only set time in standby mode.



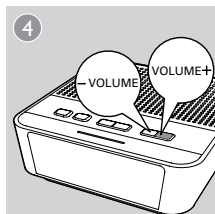
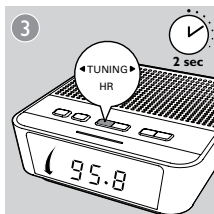
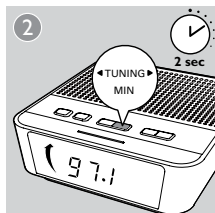
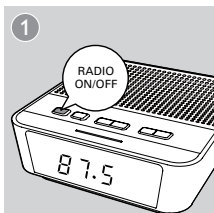
5 Listen to FM radio

Note

- Keep the clock radio away from other electronic devices to avoid radio interference.
- For better reception, fully extend and adjust the position of the FM antenna.

Tune to FM radio stations

- 1 Press **RADIO ON/OFF** to turn on the FM radio.
- 2 Press and hold **◀ TUNING ▶** for two seconds.
↳ The clock radio tunes to a station with strong reception automatically.
- 3 Repeat step 2 to tune to more radio stations.



To tune to a station manually:

In tuner mode, press **◀ TUNING ▶** repeatedly to select a frequency.

Note

- The tuning grid of the clock radio is 50KHz, the radio frequency on the display panel will increase 0.1MHz by pressing **◀ TUNING ▶** twice.

Store FM radio stations manually

You can store up to 10 FM radio stations.

- 1 Tune to an FM radio station.
- 2 Press and hold **PRESET** for two seconds.
↳ The preset number begins to blink.
- 3 Press **◀ TUNING ▶** repeatedly to select a number.
- 4 Press **PRESET** again to confirm.
- 5 Repeat steps 1 to 4 to store other stations.

Tip

- To remove a pre-stored station, store another station in its place.

Select a preset radio station

In tuner mode, press **PRESET** repeatedly to select a preset number.

Adjust volume

While listening, press **- VOLUME +** to adjust volume.

6 Other features

Set alarm timer

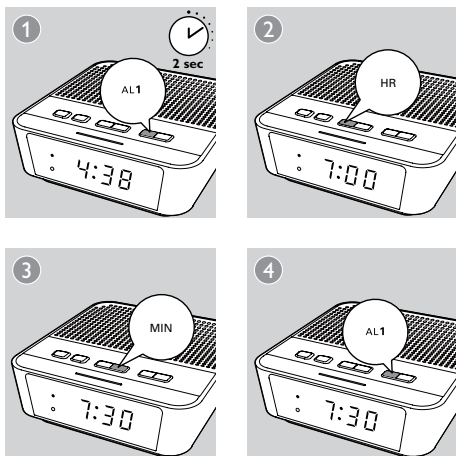
Set alarm

Note

- You can only set the alarm in standby mode.
- Make sure that you have set the clock correctly.

Follow the illustration to set the first alarm.

- **AL1**: set the first alarm.
- **AL2**: set the second alarm.



Tip

- The clock radio exits alarm setting mode when being idle for 10 seconds.

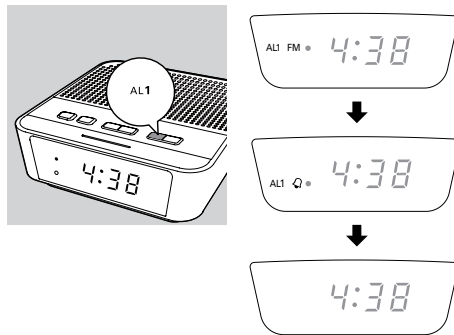
Select alarm source

You can select FM radio or buzzer as the alarm source.

↳ The corresponding alarm icon lights up.

Note

- The gentle wake-up function is designed for radio source only.



Activate/deactivate alarm timer

Press **AL1** or **AL2** repeatedly to activate or deactivate the alarm timer.

- ↳ If the alarm timer is deactivated, the alarm indicator turns off.
- ↳ The alarm repeats ringing for the next day.

Snooze alarm

When alarm sounds, press **SNOOZE**.

- ↳ The alarm snoozes and repeats ringing nine minutes later.

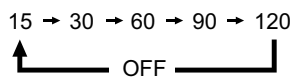
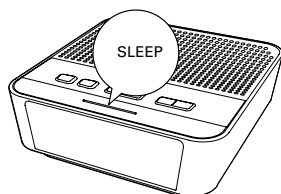
Set sleep timer

This clock radio can switch to standby mode automatically after a preset period.

- Press **SLEEP** repeatedly to select a period (in minutes).
 - ↳ The clock radio switches to standby mode automatically after the preset period.

To deactivate the sleep timer:

- Press **SLEEP** repeatedly until **[OFF]** (off) appears.



7 Product information

Note

- Product information is subject to change without prior notice.

Specifications

Amplifier

Rated Output Power	200mW RMS
--------------------	-----------

Tuner (FM)

Tuning Range	87,5-108 MHz
--------------	--------------

Tuning Grid	100 KHz
-------------	---------

Sensitivity

- Mono, 26 dB S/N Ratio	<22 dBf
-------------------------	---------

- Stereo, 46 dB S/N Ratio	<51.5 dBf
---------------------------	-----------

Total Harmonic Distortion	<3%
---------------------------	-----

Signal to Noise Ratio	>50 dBA
-----------------------	---------

General information

AC Power (power adapter)	Brand name: Philips; Model: AS030-060-EE050, or EML0600500; Input: 100-240 V~, 50/60 Hz; 0.15 A; Output: 6 V \equiv 0.5A
--------------------------	---

Operation Power Consumption	<5 W
-----------------------------	------

Standby Power Consumption	<1 W
---------------------------	------

Dimensions: Main Unit (W x H x D)	130 x 46 x 130 mm
-----------------------------------	-------------------

Weight - Main Unit	0.3 kg
--------------------	--------

8 Troubleshooting



Warning

- Never remove the casing of this device.

To keep the warranty valid, never try to repair the system yourself.

If you encounter problems when using this device, check the following points before requesting service. If the problem remains unsolved, go to the Philips Web page (www.philips.com/support). When you contact Philips, make sure that the device is nearby and the model number and serial number are available.

No power

- Ensure that the AC power plug of the unit is connected properly.
- Ensure that there is power at the AC outlet.

No sound

- Adjust the volume.

No response from the unit

- Disconnect and reconnect the AC power plug, then turn on the unit again.

Poor radio reception

- Increase the distance between the unit and your TV or VCR.
- Fully extend the FM antenna.

Alarm does not work

- Set the clock/alarm correctly.

Clock/alarm setting erased

- Power has been interrupted or the power plug has been disconnected.
- Reset the clock/alarm.



Specifications are subject to change without notice.

2014 © WOOX Innovations Limited.

All rights reserved.

Philips and the Philips' Shield Emblem are registered trademarks of Koninklijke Philips N.V. and are used by WOOX Innovations Limited under license from Koninklijke Philips N.V.

AJ3116_12_UM_V1.0

