



Philips
Cordless phone

D150

1.6" display/ amber backlight
2 handsets
2 handsets

D1502W



Keep it simple

Designed for complete simplicity, this phone gives you all the benefits of long-lasting ergonomic comfort, and great sound reproduction. A true plug & play device with an intuitive menu, it is simplicity itself.

Nice and simple

- Ultimate convenience through easy setup
- Textured back cover for non-slip grip
- Menu in multiple local languages
- Easy to read 4.1 cm (1.6") display with amber backlight
- Programmable hot keys for quick dial
- Up to 16 hours talk time on a single charge
- Caller ID – so you always know who is calling

Crystal clear sound

- Advanced sound testing & tuning for superb voice quality
- Parametric Equalizer delivers pure and clear sound
- Automatic Volume Control offsets unwanted volume variation
- Optimized antenna layout for great reception in any room

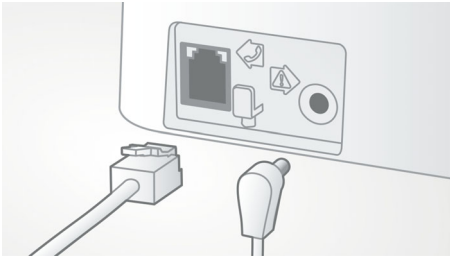
Eco-conscious product

- Low radiation and power consumption

PHILIPS

Highlights

Easy setup



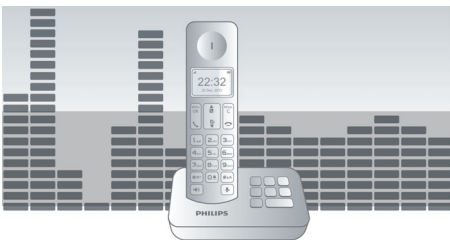
Ultimate convenience through easy set up. Simplified installation - Plug & Play product

Optimized antenna layout



Our optimized antenna layout ensures strong and stable reception – even in areas of the house where cordless transmission is difficult. Now you can take a call wherever you are in the house, and enjoy a long, uninterrupted conversation even as you walk around.

Parametric Equalizer



Our telephones use parametric equalization in the digital sound processing to fine-tune the sound response back to the intended linear frequency response curve, delivering sound that is pure and clear, for each conversation.

Automatic Volume Control



Automatic Volume Control offsets variations in sound signal, which can be caused by distance, signal strength or the caller's phone - so what you hear always remains consistent. Reducing the audio amplification for strong signals, and increasing it for weak ones, it means you can enjoy a smooth conversation without unwanted sound volume variation.

Caller ID



Sometimes it is good to know who is calling before you answer. And our Caller ID lets you keep track of who is on the other end of the line.

Eco-conscious product



Philips phones are energy efficient and designed to be respectful to the environment.

Menu in local languages



Enjoy easy set-up, navigation and control with intuitive menu available in local languages.

Programmable hot keys



Now calling the people you care about most is easier than ever. With simple one-touch dialing, you will never have to search for their number again. You can program up to 2 keys for instant calling.

Non-slip grip



The rear of the handset is treated with a special texture for added comfort and better grip.

Specifications

Sound

- Volume control on handset
- Ringtones on handset: 10 polyphonic

Picture/Display

- Display size: 4.1 cm / 1.6"
- Display type: 1-line dot matrix + 2 line icons
- Backlight: Yes
- Backlight color: Amber

Convenience

- Menu structure in the handset: List Menu
- Signal strength indicator: 3- bar indicator
- Battery level indicator: 3- bar battery icon
- Date / Time display
- Base Station keys: Paging key
- Battery charge indication
- Signal strength indication
- Programmable hot keys: Key 1 and 2
- Auto hang up
- Key tone on/off
- Call Management: Call Waiting*, Caller ID*, Microphone mute, Missed Calls, Received Calls
- Multi base capability: 1
- Multi handset capability: Up to 4
- Intercom - multiple handsets
- Line cord length: 1.8m
- Power cord length: 1.8m
- Charge time: 8 hours
- Up to 16 hrs talk time
- Range: Open field <300m; in door <50m
- Up to 180 hrs standby time

- Keypad lock
- Non-slip grip: Circular texture

Memory Capacity

- Phonebook: 50 names and numbers
- Redial List Capacity: 10 entries
- Call log entries: 20 entries
- Phonebook store in the base

Power

- Battery capacity: 550 mAh
- Battery type: AAA NiMH Rechargeable
- Mains power: AC 100-240V ~50/60Hz

Security

- Transmission encryption : Yes

Network Features

- Compatible: GAP

SAR Value

- Philips handsets: <0.1 W/kg

Packaging dimensions

- EAN: 87 12581 67305 5
- Type of shelf placement: Laying
- Number of products included: 1
- Packaging type: Carton
- Packaging dimensions (W x H x D):
18.4 x 13.5 x 8.1 cm
- Gross weight: 0.654 kg
- Nett weight: 0.533 kg
- Tare weight: 0.121 kg



Issue date 2015-02-11

Version: 3.1.3

12 NC: 8670 000 97242
EAN: 87 12581 67305 5

© 2015 Koninklijke Philips N.V.
All Rights reserved.

Specifications are subject to change without notice.
Trademarks are the property of Koninklijke Philips N.V.
or their respective owners.

www.philips.com