

# MP3-CD Mini Hi-Fi System

FWM70



THANK YOU FOR CHOOSING PHILIPS!

## **NEED HELP FAST?**

*Read your Quick-Use guide and/or owner's manual first for quick tips that make using your Philips product more enjoyable. If you have read your instructions and still need assistance,*

*you may access our online help at **www.usasupport.philips.com***

*or call **1-888-PHILIPS(744-5477)** while with your product.*

User manual

Manuel d'utilisation

Manual del usuario



# PHILIPS

## Canada

### English:

This digital apparatus does not exceed the Class B limits for radio noise emissions from digital apparatus as set out in the Radio Interference Regulations of the Canadian Department of Communications.

### Français:

Cet appareil numérique n'émet pas de bruits radioélectriques dépassant les limites applicables aux appareils numériques de Class B prescrites dans le Règlement sur le Brouillage Radioélectrique édicté par le Ministère des Communications du Canada.

## CAUTION

***Use of controls or adjustments or performance of procedures other than herein may result in hazardous radiation exposure or other unsafe operation.***

## ATTENTION

***L'utilisation des commandes ou réglages ou le non-respect des procédures ci-inclues peuvent se traduire par une exposition dangereuse à l'irradiation.***

## ATENCIÓN

***El uso de mando o ajustes o la ejecución de métodos que no sean los aquí descritos puede ocasionar peligro de exposición a radiación.***

### Energy Star

As an ENERGY STAR®

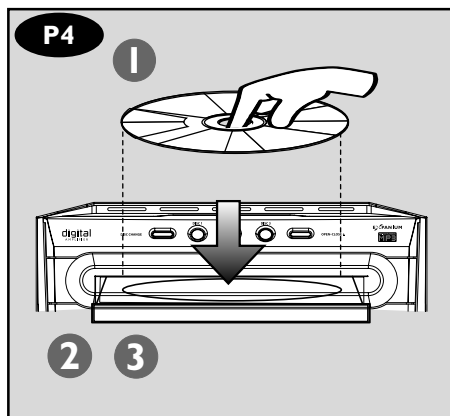
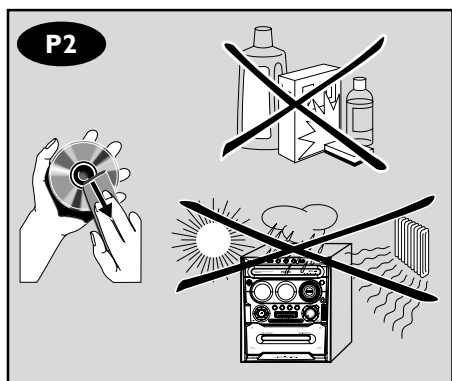
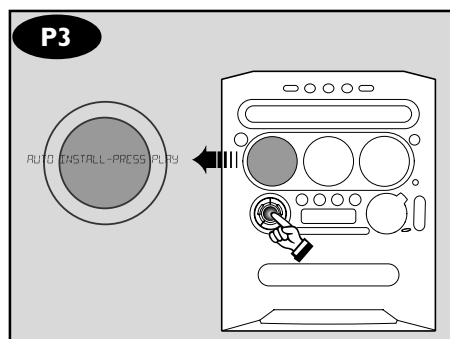
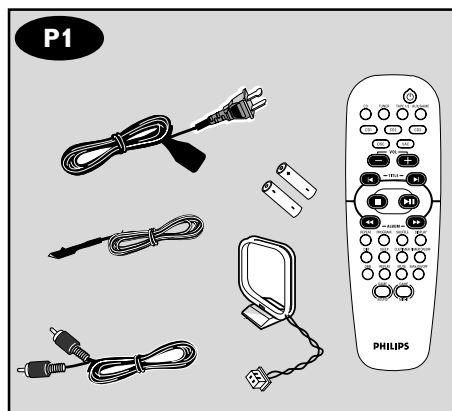
Partner, Philips has

determined that this product

meets the ENERGY STAR® guidelines for

energy efficiency.





# Return your Product Registration Card today to get the very most from your purchase.

Registering your model with PHILIPS makes you eligible for all of the valuable benefits listed below, so don't miss out. Complete and return your Product Registration Card at once to ensure:

## \*Proof of Purchase

Returning the enclosed card guarantees that your date of purchase will be on file, so no additional paperwork will be required from you to obtain warranty service.

## \*Product Safety Notification

By registering your product, you'll receive notification - directly from the manufacturer - in the rare case of a product recall or safety defect.

## \*Additional Benefits of Product Ownership

Registering your product guarantees that you'll receive all of the privileges to which you're entitled, including special money-saving offers.

## Know these safety symbols



This "bolt of lightning" indicates uninsulated material within your unit may cause an electrical shock. For the safety of everyone in your household, please do not remove product covering.



The "exclamation point" calls attention to features for which you should read the enclosed literature closely to prevent operating and maintenance problems.

## For Customer Use

Enter below the Serial No. which is located on the rear of the cabinet. Retain this information for future reference.

Model No. \_\_\_\_\_

Serial No. \_\_\_\_\_

**WARNING:** TO PREVENT FIRE OR SHOCK HAZARD, DO NOT EXPOSE THIS EQUIPMENT TO RAIN OR MOISTURE.

**CAUTION:** To prevent electric shock, match wide blade of plug to wide slot, fully insert.

# PHILIPS

***Congratulations on your purchase,  
and welcome to the “family!”***

**Dear PHILIPS product owner:**

Thank you for your confidence in PHILIPS. You've selected one of the best-built, best-backed products available today. We'll do everything in our power to keep you happy with your purchase for many years to come.


As a member of the PHILIPS “family,” you're entitled to protection by one of the most comprehensive warranties and outstanding service networks in the industry. What's more, your purchase guarantees you'll receive all the information and special offers for which you qualify, plus easy access to accessories from our convenient home shopping network.

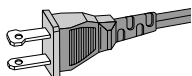
Most importantly, you can count on our uncompromising commitment to your total satisfaction.

All of this is our way of saying welcome - and thanks for investing in a PHILIPS product.

**P.S. To get the most from your PHILIPS purchase, be sure to complete and return your Product Registration Card at once.**

# IMPORTANT SAFETY INSTRUCTIONS

1. **Read these instructions.**
2. **Keep these instructions.**
3. **Heed all warnings.**
4. **Follow all instructions.**
5. **Do not use this apparatus near water.**
6. **Clean only with a piece of dry cloth.**
7. **Do not block any ventilation openings. Install in accordance with the manufacturer's instructions.**
8. **Do not install near any heat sources** such as radiators, heat registers, stoves, or other apparatus (including amplifiers) that produce heat.
9. **Do not defeat the safety purpose** of the polarized or grounding-type plug. A polarized plug has two blades with one wider than the other. A grounding type plug has two blades and a third grounding prong. The wide blade or the third prong are provided for your safety. If the provided plug does not fit into your outlet, consult an electrician for replacement of the obsolete outlet.
10. **Protect the power cord** from being walked on or pinched, particularly at plugs, convenience receptacles, and the point where they exit from the apparatus.
11. **Only use attachments/accessories** specified by the manufacturer.
12.  **Use only with the cart**, stand, tripod, bracket, or table specified by the manufacturer or sold with the apparatus. When a cart is used, use caution when moving the cart /apparatus combination to avoid injury from tip-over.



**AC Polarized Plug**

13. **Unplug this apparatus** during lightning storms or when unused for long periods of time.
14. **Refer all servicing** to qualified service personnel. Servicing is required when the apparatus has been damaged in any way, such as power-supply cord or plug is damaged, liquid has been spilled or objects have fallen into the apparatus, the apparatus has been exposed to rain or moisture, does not operate normally, or has been dropped.
15. **Battery usage CAUTION** – To prevent battery leakage which may result in bodily injury, property damage, or damage to the unit:  
Install **all** batteries correctly, **+** and **-** as marked on the unit.  
Do not mix batteries (**old** and **new** or **carbon** and **alkaline**, etc.).  
Remove batteries when the unit is not used for a long time.
16. **Apparatus shall not be exposed to dripping or splashing.**
17. **Do not place any sources of danger on the apparatus** (e.g. liquid filled objects, lighted candles).
18. This product may contain lead and mercury. Disposal of these materials may be regulated due to environment considerations.  
**For disposal or recycling information, please contact your local authorities or the Electronic Industries Alliance: [www.eiae.org](http://www.eiae.org).**

**EL 6475-S004: 03/12**

**Class II equipment symbol**



This symbol indicates that the unit has a double insulation system

English ..... 6

Français ..... 27

Español ..... 48

English

Français

Español

## General Information

Supplied accessories .....	9
Environmental information .....	9
Care and safety information .....	9

## Functional Overview

Main unit and remote control .....	10~11
Control buttons available on the remote control only .....	11

## Connections

Step 1: Connecting FM/AM antennas .....	13
Step 2: Connecting the speakers .....	13
Step 3: Connecting to the game console .....	13
Step 4: Connecting the AC power cord .....	13
Step 5: Inserting batteries into the remote control .....	14
Using the remote control to operate the system .....	14

## Gameport Operations

About Gameport .....	15
Preparation before use .....	15
Starting operation .....	15

## Basic Operations

Switching on/off .....	16
Switching to active mode .....	16
Switching to standby mode (view clock) ..	16
Demonstration mode .....	16
Setting the clock .....	16
Dimming system's display screen .....	17
Volume control .....	17
Sound control .....	17
wOOx .....	17
Digital sound control .....	17
Virtual ambience control .....	17
Incredible Surround .....	17

## Disc Operations

Playable discs .....	18
Loading discs .....	18
Basic playback controls .....	18
Playing an MP3 disc .....	19
Repeat and shuffle .....	19
Repeat play .....	19
Random play .....	19
Programming the disc tracks .....	20
Checking the programme .....	20
Clearing the programme .....	20

## Tuner Operations

Tuning to radio stations .....	21
Presetting radio stations .....	21
Using the plug and play .....	21
Automatic presetting .....	21
Manual presetting .....	21
Selecting a preset radio station .....	21
Deleting a preset radio station .....	21

## Tape Operation/Recording

Tape playback .....	22
General information on recording .....	22
Preparation for recording .....	23
Disc synchro recording .....	23
Dubbing tapes .....	23

## Timer Operations

Setting the timer .....	24
Activating/Deactivating the timer .....	24
Setting the sleep timer .....	25

## Other Connection

Listening to an external source .....	25
---------------------------------------	----

## Specifications

## Troubleshooting



---

## Supplied accessories (page 3 – P1)

- Remote control and two AA batteries.
- AM loop antenna
- FM wire antenna
- Video cinch cable (yellow)
- AC power cord

---

## Environmental information

All unnecessary packaging has been omitted. We have tried to make the packaging easy to separate into three materials: cardboard (box), polystyrene foam (buffer) and polyethylene (bags, protective foam sheet).

Your system consists of materials which can be recycled and reused if disassembled by a specialised company. Please observe the local regulations regarding the disposal of packaging materials, exhausted batteries and old equipment.

---

## Care and safety information

(page 3 – P2)

### Avoid high temperature, moisture, water and dust

- Do not expose the system, batteries or discs to humidity, rain, sand or excessive heat (caused by heating equipment or direct sunlight). Always keep the disc tray closed to avoid dust on the lens.
- No objects filled with liquids, such as vases, shall be placed on the apparatus.
- No naked flame sources, such as lighted candles, should be placed on the apparatus.
- Don't expose the system to dripping or splashing.

### Avoid condensation problem

- The lens may cloud over when the system is suddenly moved from cold to warm surroundings, making it impossible to play a disc. Leave the system in the warm environment until the moisture evaporates.

### Do not block the vents

- In a cabinet, allows about 10cm (4 inches) of

free space all around the system for adequate ventilation.

### Care of discs

- To clean a CD, wipe it in a straight line from the centre towards the edge using a soft, lint-free cloth. A cleaning agent may damage the disc!
- Write only on the printed side of a CDR(W) and only with a soft felt-tipped pen.
- Handle the disc by its edge, do not touch the surface.

### Care of the cabinet

- Use soft cloth slightly moistened with a mild detergent solution. Do not use a solution containing alcohol, spirits, ammonia or abrasives.

### Finding a suitable location

- Place the system on a flat, hard, and stable surface.

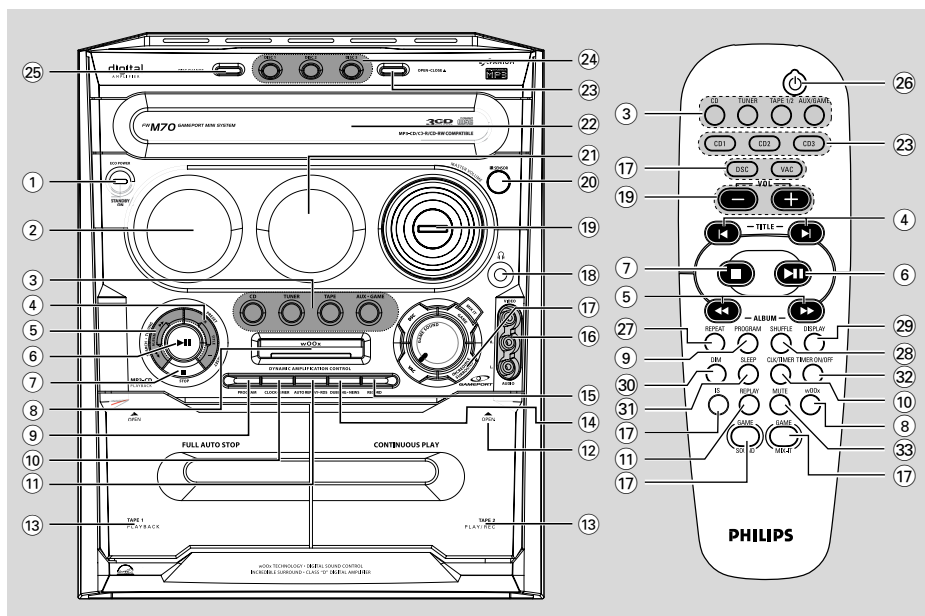
### Built-in safety circuit

- Under extreme conditions, this system may switch to the standby mode automatically. If this happens, let the system cool down before reusing it.

### Power saving

- This system is designed to use less than 1W of electricity when switched to the standby mode. Disconnect the AC power cord from the power outlet when not in use.

# Functional Overview



## Main unit and remote control

### ① **STANDBY ON ( ) / ECO POWER**

- Switches to the Eco Power standby mode or turns on the system.
- \*Switches to the standby mode.

### ② **Display screen**

### ③ **CD / TUNER / TAPE(TAPE1/2) / AUX•GAME**

- Selects the relevant active mode.
- **CD**: toggles between DISC 1~3.
- **TUNER**: toggles between FM and AM band.
- **AUX•GAME**: toggles between AUX and GAMEPORT mode.
- **TAPE**: toggles between Tape Deck 1 and Tape Deck 2.

### ④ **PRESET (–) (◀) PRESET (+) (▶)**

- **CD**: selects a track or selects a title from MP3 disc.
- **TUNER**: selects a preset radio station.
- **CLOCK**: sets the minutes.

### ⑤ **SEARCH•TUNING•ALBUM ◀◀ / ▶▶**

- **CD**: \*searches backward/forward.

- **MP3-CD**: select an album
- **TUNER**: tunes the radio frequency up/down.
- **CLOCK**: sets the hours.
- **TAPE**: searches backward/forward.

### ⑥ **PLAY•PAUSE ▶ II**

- **CD**: starts/pauses playback.
- **TAPE**: starts playback.

(only on the main unit)

- **TUNER**: \*enters Plug & Play mode and/or starts preset radio station installation.

### ⑦ **STOP ■**

- Exits an operation.
- **CD**: stops playback or clears a programme.
- **TUNER**: \*erases a preset radio station.

(only on the main unit)

- \*Turns on/off the demonstration mode.

### ⑧ **wOOx**

- Selects the enhanced or normal wOOx sound effect.

### ⑨ **PROGRAM**

- **CD**: starts or confirms tracks programming.
- **TUNER**: starts \*automatic/manual preset

\* = Press and hold the button for more than two seconds.

## 10 CLOCK•TIMER (CLK/TIMER)

- \*Enters clock or timer setting mode.

## 11 AUTO REPLAY

- Selects continuous playback in either AUTO PLAY or ONCE mode only.

## 12 OPEN ▲

- Opens the tape deck

## 13 TAPE1 / TAPE2

- Tape deck 1 and tape deck 2.

## 14 DUBBING

- Dubs a tape

## 15 RECORD●

- Starts recording on tape deck 2

## 16 VIDEO

- Use a video cable to connect to your game console's video output.

### AUDIO L. / AUDIO R.

- Use an audio cable to connect to your game console's left/right audio output.

## 17 INCREDIBLE SURROUND

- Creates a super-enhanced stereo effect.

### DSC

- Selects different type of preset sound equaliser settings (NEW AGE, ELECTRIC, DIGITAL, POP, CLASSIC or ROCK).

### VAC

- Selects different type of ambience-based equaliser settings (CINEMA, ARCADE, CONCERT, DISCO, CYBER or HALL).

### MIX IT (GAME MIX IT)

- Mixes the game sound with your favourite music from one of these music sources (CD, TUNER, AUX or TAPE).

### GAME SOUND

- Adjusts the game's output volume level.
- Selects different type of equaliser setting for Gameport (SPEED, PUNCH or BLAST).

## 18

- Plugs in the headphones jack. The speakers output will be cancelled.

## 19 MASTER VOLUME (VOL + -)

- Adjusts the volume level.

## 20 IR SENSOR

- Points the remote control towards this sensor.

## 21 VU meters

- Indicates signal strength of left/right channel.

## 22 DISC TRAY

## 23 OPEN•CLOSE ▲ (DISC 1~3)

- Opens/closes the respective disc tray.

## 24 DISC 1, 2 and 3

- Selects a disc tray to playback

## 25 DISC CHANGE

- Changes discs

Control buttons available on the remote control only

## 26

- Switches to the Eco Power standby mode.
- \*Switches to the standby mode.

## 27 REPEAT

- Repeats a track/disc/all programmed tracks.

## 28 SHUFFLE

- Turns on/off the random play mode.

## 29 DISPLAY

- Displays the album and title name for MP3 disc.

## 30 DIM

- Turns on/off the dim mode.

## 31 SLEEP

- Sets the sleep timer function.

## 32 TIMER ON/OFF

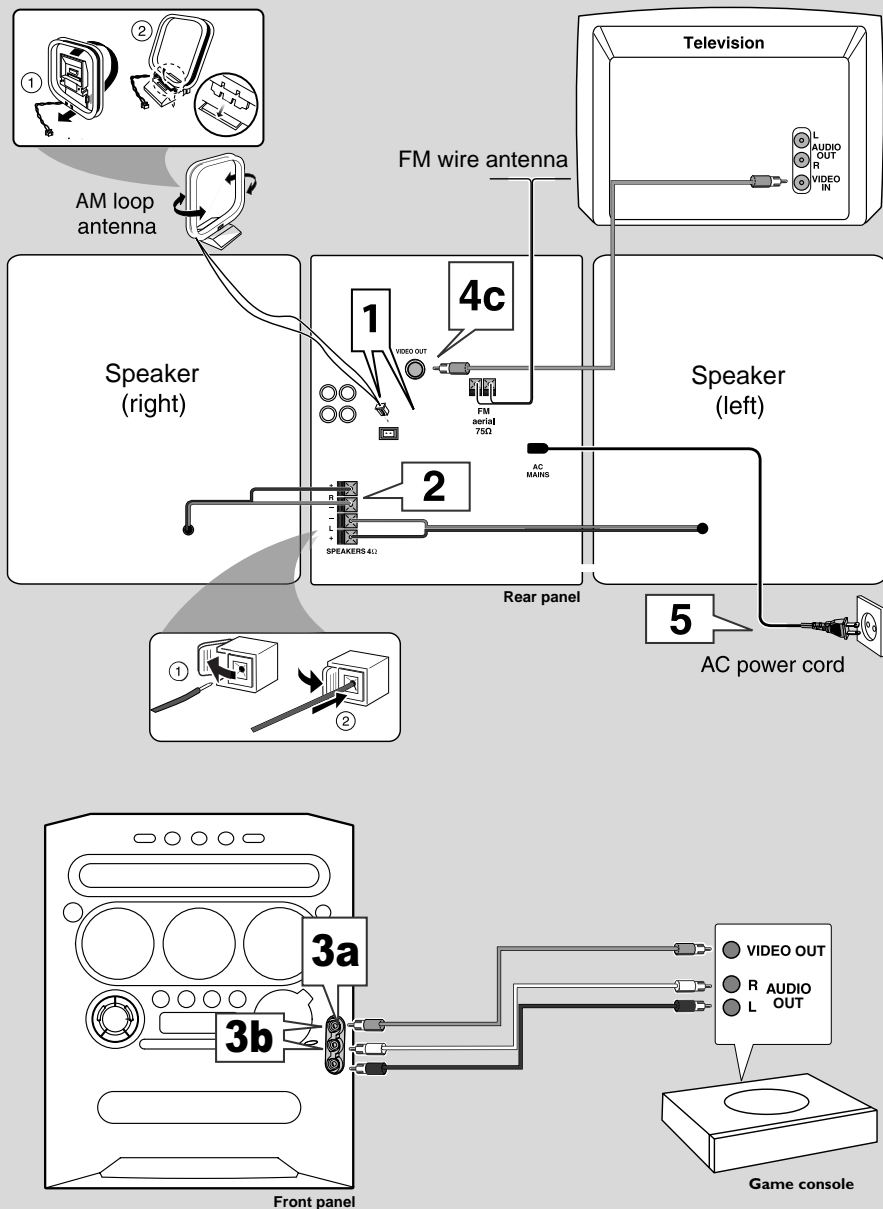
- Turns on/off the timer function.

## 33 MUTE

- Mutes or restores the volume

# Connections

English



## Warning!

- Use only the supplied speakers. The combination of the main unit and speakers provides the best sound. Using other speakers can damage the unit and sound quality will be negatively affected.
- Never make or change connections with the power switched on.
- Connect the AC power cord to the power outlet only after you have finished hooking up everything.
- To avoid overheating of the system, a safety circuit has been built in. Therefore, your system may switch to Standby mode automatically under extreme conditions. If this happens, let the system cool down before reusing it (not available for all versions).

## Step 1: Connecting FM/AM antennas

- Place the AM loop antenna on a shelf or attach it to a stand or wall.
- Extend the FM antenna and fix its ends to the wall.
- Adjust the position of the antennas for optimal reception.
- Position the antennas as far as possible from a TV, VCR or other radiation source to prevent unwanted noise.
- For better FM stereo reception, connect the external FM antenna.

Refer to page 12.

## Step 2: Connecting the speakers

Connect the speaker wires to the SPEAKERS terminals, right speaker to "R" and left speaker to "L", coloured (marked) wire to "+" and black (unmarked) wire to "–". Fully insert the stripped portion of the speaker wire into the terminal as shown on page 12.

### Notes:

- Ensure that the speaker cables are correctly connected. Improper connections may damage the system due to short-circuit.
- Do not connect more than one speaker to any one pair of +/- speaker terminals.

## Step 3: Connecting to the game console

### IMPORTANT!

Gameport inputs are for the game console only.

- a. Use the game console's video cable (not supplied) to connect its video output to the GAMEPORT-VIDEO terminal.
- b. Use the game console's audio cables (not supplied) to connect its audio outputs to the GAMEPORT-AUDIO L. / AUDIO R. terminals.
- c. Use the video cable (yellow) to connect the VIDEO OUT terminal to the video input on the TV for viewing.

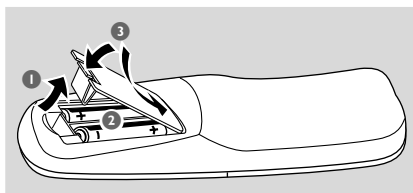
### Notes:

- On the TV, the Video Input jack is usually yellow and might be labeled A/V In, CVBS, Composite or Baseband.
- To avoid magnetic interference, do not position the front speakers too close to your TV.

## Step 4: Connecting the AC power cord

"AUTO INSTALL - PRESS PLAY" may appear on the display panel when the AC power cord is plugged into the power outlet for the first time. Press ►|| on the main unit to store all available radio stations (page 3 - P3) or press ■ to exit (refer to "Tuner Operations").

## Step 5: Inserting batteries into the remote control



- ❶ Open the battery compartment cover.
- ❷ Insert two batteries type R06 or AA, following the indications (+ / -) inside the compartment.
- ❸ Close the cover.

### Using the remote control to operate the system

- ❶ Aim the remote control directly at the remote sensor (iR) on the main unit.
- ❷ Select the source you wish to control by pressing one of the source select keys on the remote control (for example CD, TUNER).
- ❸ Then select the desired function (for example ► II, ◀, ▶).

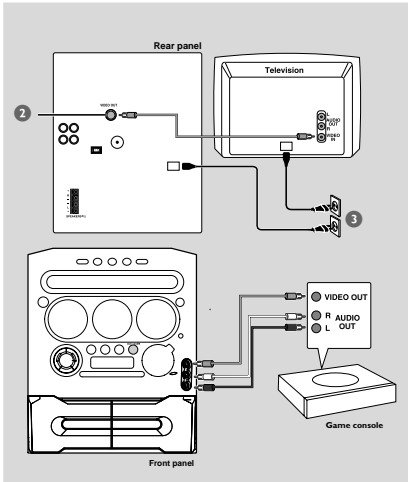
### CAUTION!

- Remove batteries if they are exhausted or will not be used for a long time.
- Do not use old and new or different types of batteries in combination.
- Batteries contain chemical substances, so they should be disposed of properly.

## About Gameport

Gameport allows you to connect your game console to this audio system which enables you to enjoy a total game immersion experience through powerful sound output.

## Preparation before use



- 1 Connect your game console's video and audio output to the GAMEPORT video and audio inputs respectively (refer to "Connections - Connecting to game console").
- 2 Connect your TV's video input to the **VIDEO OUT (CVBS)** on the rear panel.
- 3 Connect all the AC power cord to the power outlet.

## Starting operation

- 4 Turn on the TV and set to the correct video-in channel.  
The TV's video input channel may be called AUX(iliary) IN, AUDIO/VIDEO (AV) IN, EXT 1, etc. These channels are often near channel 00 on your TV. Or, your TV remote control may have a button or switch that chooses different video modes. See your TV manual for details.

- 5 Press **AUX•GAME** until "GAMEPORT" is display.
- 6 Press **GAME** to select the type of sound setting that best suit the game : **SPEED, PUNCH, BLAST** or **OFF**.
- 7 If you like to mix your game sound to your favourite music, press **MIX-IT** to select the desired music source : **CD, TUNER, AUX, TAPE** or **OFF**.  
CD → "MIX-CD"  
TUNER → "MIX-TU"  
AUX → "MIX-AUX"  
TAPE → "MIX-TA 1" / "MIX-TA2"  
OFF → "MIX-OFF"

**Note:**

– To change the disc tray, you have to press **CD**, then press **CD 1~3** to select the desired disc tray.

- 8 If necessary, start playback of your chosen mixer source.
- 9 Start playing your favourite game.

### To adjust the game console's volume level

- Adjust **GAME VOLUME**.

**Notes:**

- You can only activate **GAME VOLUME** and **MIX-IT** while in the game source mode.
- If your game console is switched on, the video image will always appear on the TV even though you are not in the gameport mode.


# Basic Operations

## Switching on/off

### Switching to active mode

- Press **CD, TUNER, TAPE** or **AUX/GAME**.

### Switching to standby mode (view clock)

- Press and hold .
  - The clock is displayed.
  - While in the standby mode, pressing **CLOCK•TIMER** button will switch the system to the Eco Power standby mode.


#### Note:

- Before switching the system to the standby or standby mode, make sure the demonstration mode has been deactivated.

## Demonstration mode

If the demonstration mode is active, whenever you switch the system to the standby mode, it will begin showing various features offered by the system.

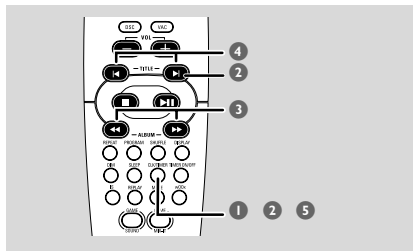
### To activate the demonstration








In the standby mode, press and hold  on the main unit until "DEMO ON" is displayed.

### To deactivate the demonstration

- Press and hold  on the main unit until "DEMO OFF" is displayed.

## Setting the clock



- 1 Press and hold **CLK/TIMER** (or **CLOCK•TIMER** on main unit) until "SELECT CLOCK OR TIMER" is displayed.
- 2 Press **+** (or  on the remote control) to change the display to "CLOCK" and press **CLK/TIMER (CLOCK•TIMER)** again to confirm.
- 3 Press  or  (or  /  on the remote control) repeatedly to set the hour.
- 4 Press **-** or **+** (or  /  on the remote control) repeatedly to set the minute.
- 5 Press **CLK/TIMER (CLOCK•TIMER)** to store the setting.
  - The clock will start working.

### To view the clock time in any active mode

- Press **CLK/TIMER (CLOCK•TIMER)** once.
  - The clock is displayed for a few seconds.

#### Notes:

- The clock setting will be erased when the system is disconnected from the power supply.
- The system will exit clock setting mode if no button is pressed within 90 seconds.



## Dimming the system's display

You can select the desired brightness for the display panel.

- In any active mode, press **DIM** on the remote control repeatedly to turn on/off dim mode.  
→ **DIM** is shown, except for DIM OFF mode.

## Volume control

- Adjust **MASTER VOLUME** (or press **VOL + / -** on the remote) to increase or decrease the sound level.  
→ "**VOL MIN**" is the minimum volume level and "**VOL MAX**" is the maximum volume level.

### To switch off the volume temporarily

- Press **MUTE** on the remote.  
→ Playback will continue without sound and "**MUTE**" is displayed.  
→ To restore the volume, press **MUTE** again or increase the volume level.

## Sound control

The wOOx sound, DSC and VAC sound features cannot be activated at the same time.

While in the game mode, all the sound control features are not available for selection, except Game Sound control.

### wOOx sound

There are three wOOx settings to enhance the bass response.

- Press **wOOx ON-OFF** to switch ON (enhanced) or OFF (normal) the wOOx sound effect.  
→ When wOOx is switched on, wOOx level will appear on the display: wOOx1, wOOx2, wOOx3, wOOx OFF.  
→ When wOOx is switched off, "**wOOx OFF**" is displayed and wOOx icon will disappear from the display.

#### Note:

— Some discs or tapes might be recorded in high modulation, which causes a distortion at high volume. If this occurs, deactivate wOOx or reduce the volume.

### Digital sound control

DSC provides a different type of preset sound equaliser setting.

- Press **DSC** repeatedly to select : **NEW AGE**, **ELECTRIC**, **DIGITAL**, **POP**, **CLASSIC** or **ROCK**.

### Virtual ambience control

VAC provides a different type of environment-based equaliser setting.

- Press **VAC** repeatedly to select : **CINEMA**, **ARCADE**, **CONCERT**, **DISCO**, **CYBER** or **HALL**.

### Incredible Surround

The Incredible Surround magnifies the virtual distance between the front speakers for an incredibly wide, enveloping, stereo effect.

- Press **IS** on the remote control) repeatedly.  
→ If activated, **IS ON** is shown and "**INCREDIBLE SURROUND**" is displayed.  
→ If deactivated, "**IS OFF**" is displayed.

# Disc Operations

## IMPORTANT!

- This system is designed for regular discs. Therefore, do not use any accessories such as disc stabiliser rings or disc treatment sheets, etc., as offered on the market, because they may jam the changer mechanism.
- Do not load more than one disc onto each tray.

## Playable discs

This system is able to play:

- All pre-recorded audio CDs
- All finalised audio CDR and audio CDRW discs
- MP3-CDs (CD-ROMs with MP3 tracks)



## Loading discs (page 3 - P4)

- 1 Press **OPEN•CLOSE** on the main unit to open the disc trays.
- 2 Load a disc with the label side facing up.
- 3 Press **OPEN•CLOSE** again to close the disc tray.  
→ "READING" is displayed. The selected disc tray, total number of tracks and the playing time will appear on the display.

### Note:

- To ensure good system performance, wait until the disc trays completely read the disc(s) before proceeding.

## Basic playback controls

### Load discs (page 3 - P4)

#### To play all discs on the disc trays

- Press **▶II**  
OR

In the stop mode, press **CD** to select a disc tray to begin, then press **▶II**

→ All the available discs will play once, then stop.

#### To play the selected disc only

- Press one of the **CD 1~3** buttons on remote control.  
→ The selected disc will play once, then stop.

#### To select a desired track

- Press **-** or **+** (or **◀/▶**) on the remote control repeatedly until the desired track is displayed.  
→ During random play (shuffle), pressing **-** (or **◀** on the remote control) will not affect the current playback.

#### To search for a particular passage during playback

- Press and hold **◀◀** or **▶▶** (or **◀◀/▶▶** on the remote control) and release it when the desired passage is located.  
→ During searching, the volume will be reduced. For a MP3 disc, the volume will be muted.

#### To change discs without interrupting playback

- Press **DISC CHANGE**.  
For example, if currently disc tray 1 is playing, you can change the discs on disc trays 2 and 3.

#### To interrupt playback

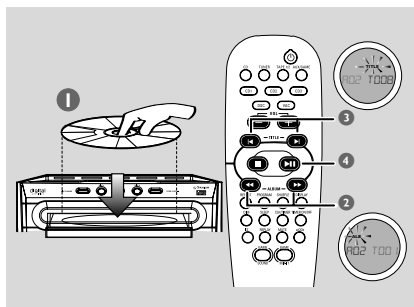
- Press **▶II**  
→ To resume normal playback, repeat the above.

#### To stop playback

- Press **■**.  
→ If the system remains in the stop mode for 30 minutes, it will switch to the standby mode.

# Disc Operations

## Playing an MP3 disc



- 1 Load an MP3 disc.  
→ The disc reading time may exceed 10 seconds due to the large number of songs compiled into one disc.  
→ "A XX YYY" is displayed. XX is the current album number and YYY is the current title number.
- 2 Press **⏮** or **⏭** (or **⏮** / **⏭** on the remote control) to select a desired album.
- 3 Press **-** or **+** (or **⏮** / **⏭** on the remote control) to select a desired title.
- 4 Press **▶** to start playback.
- During playback, press **DISPLAY** to show the album and title name.

### Supported MP3 disc formats:

- ISO9660, Joliet, UDF 1.5
- Maximum title number : 999 (depending on filename length)
- Maximum album number : 99
- Supported sampling frequencies : 32 kHz, 44.1 kHz, 48 kHz
- Supported Bit-rates : 32~256 (kbps), variable bitrates
- ID3 tags : V1.1, V2.2, V2.3, V2.4

## Repeat and shuffle

You can select and change various play modes before or during playback.

### Repeat play

- 1 Press **REPEAT** on the remote control repeatedly to select :
  - to repeat playback of the current track.
  - to repeat playback of the current disc.
- 2 To resume normal playback, press **REPEAT** until "OFF" is displayed.

### Random play

- Press **SHUFFLE** on the remote control to turn on/off the shuffle mode.
  - If activated, **SHUFFLE** is shown and the repeat mode (if any) will be cancelled.
  - Random play will start from the current disc tray. Only after all the tracks in the active disc tray have been shuffled, then it will change to the next available disc tray.
  - If programme mode is active, only the programmed tracks will be played in random order.

#### Note:

- Pressing the **OPEN•CLOSE** button will cancel all repeat and shuffle modes.

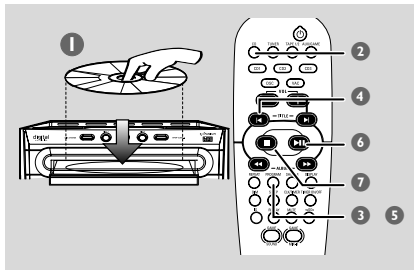
# Disc Operations

## Programming the disc tracks

Programming tracks is possible when playback is stopped. Up to 99 tracks can be stored in the memory in any order.

### IMPORTANT!

**It is only possible to programme from the current selected disc tray.**



- 1 Load the desired discs into the disc trays (refer to "Loading discs").
- 2 Press **CD** or one of the **CD 1~3** buttons to select a disc.
- 3 Press **PROGRAM** to start programming.  
→ **PROG** starts flashing.
- 4 Press **-** or **+** (or **◀/▶** on the remote control) repeatedly to select the desired track.
- For MP3 discs, press **◀◀** or **▶▶** (or **◀◀/▶▶** on the remote control) and **-** or **+** (or **◀/▶** on the remote control) to select the desired album and title for programming.
- 5 Press **PROGRAM** to store.
- Repeat **steps 4~5** to select other tracks.  
→ If you attempt to programme more than 99 tracks, "PROGRAM FULL" is displayed.
- 6 To start programme play, press **▶||**.
- 7 To stop playback or to end the programming, press **■** once.  
→ **PROG** stays and the programme mode remains active.

### Notes:

- If the total playing time has reached 100 minutes or one of the programmed tracks has a number greater than 30, "—:—" is displayed instead of the total playing time.
- The system will exit programming mode if no button is pressed within 20 seconds.

## Checking the programme

- 1 Stop playback and press **-** or **+** (or **◀/▶** on the remote control) repeatedly.
- 2 Press **■** to exit.  
**OR**  
Press **▶||** to start playback from the current programmed track

## Clearing the programme

- Stop playback, then press **■** to clear the program.  
→ **PROG** disappears and "PROGRAM CLEARED" is displayed.

### Note:

- The programme will be erased if the system is disconnected from the power supply or you switch to another source mode.

## IMPORTANT!

**Make sure the FM and AM antennas are connected.**

## Tuning to radio stations

- ① Press **TUNER** to enter tuner mode. To select another waveband (FM or AM), press **TUNER** again.
- ② Press and hold **◀◀** or **▶▶** (or **◀◀** / **▶▶** on the remote control) until the frequency indication starts to change, then release.  
→ The system automatically tunes to the next strong signal radio reception.

### For tuning to a weak signal station,

- Press **◀◀** or **▶▶** (or **◀◀** / **▶▶** on the remote control) briefly and repeatedly until an optimal reception is found.

## Presetting radio stations

You can store up to 40 preset radio stations in the memory, starting from FM and followed by AM bands.

### Notes:

- The system will exit presetting mode if no button is pressed within 20 seconds.
- If no stereo frequency is detected during Plug and Play, "CHECK ANTENNA" is displayed.

### Using the Plug and Play (page 3 - P3)

Plug and Play allows you to store all available radio stations automatically.

- ① Connect the system to the power supply, "AUTO INSTALL - PRESS PLAY" is displayed.  
OR  
In the Standby mode,  
Press and hold **▶▶** on the main unit until "AUTO INSTALL - PRESS PLAY" is displayed.

- ② Press **▶▶** on the main unit to start installation.  
→ "INSTALL TUNER" is displayed.  
→ All previously stored radio stations will be replaced.  
→ Once completed, the last tuned radio station will be played.

### Automatic presetting

You can start the automatic presetting from a selected preset number.

- ① In tuner mode, press **-** or **+** (or **◀** / **▶** on the remote control) to select a preset number.
- ② Press and hold **PROGRAM** until "AUTO" is displayed.  
→ If a radio station has been stored in one of the presets, it will not be stored again under another preset number.  
→ If no preset number is selected, automatic preset will begin from preset (1) and all your former presets will be overridden.

### Manual presetting

You can choose to store only the favourite radio stations.

- ① Tune to your desired radio station (refer to "Tuning to radio stations").
- ② Press **PROGRAM**.  
→ The preset number starts flashing. If you want to store the radio station in another preset number, press **-** or **+** (or **◀** / **▶** on the remote control).
- ③ Press **PROGRAM** again to store.
- Repeat **steps 1–3** to store other radio stations.

## Selecting a preset radio station

- In tuner mode, press **-** or **+** (or **◀** / **▶** on the remote control).  
→ The preset number, radio frequency, and waveband are displayed.

### Deleting a preset radio station

- Press and hold **■** until "PRESET DELETE" is displayed.  
→ The current preset radio station will be deleted.  
→ All other preset radio stations with higher numbers are decreased by one.

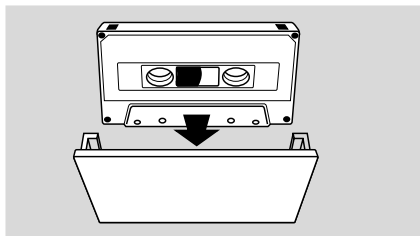
# Tape Operation/Recording

## IMPORTANT!

- Before playing a tape, check and tighten slack tape with a pencil. Slack tape may get jammed or may burst in the mechanism.
- Store tapes at room temperature and do not put them too close to a magnetic field (for example, a transformer, TV set or speaker).

## Tape playback

- 1 Press **▲** to open the tape deck door.
- 2 Insert a recorded tape and close the tape door.
- 3 Load the tape with the open side down and the full spool to the left.



- 3 Press **TAPE** or **TAPE1/2** on the remote control repeatedly to select tape deck 1 or tape deck 2.  
→ The selected tape deck number is displayed.
- 4 Press **▶II** to start playback.

## Stopping playback

- Press **■**.

## Changing the playback mode

- Press **AUTO REPLAY** repeatedly to select: **ONCE**, **AUTO REPLAY**. The default setting is **AUTO REPLAY**.

**AUTO REPLAY** ... the tape will rewind automatically at the end of playback and replay. It will replay up to max. 10 times or until you press **■**.

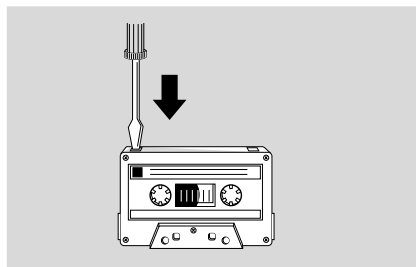
**ONCE** ..... the selected side will be played once.

## Rewinding or forwarding fast when playback is stopped

- 1 Press and hold **I◀◀** or **▶▶I** on the front panel (or press **◀◀** or **▶▶** on the remote control).
- 2 Press **■** when you reach the desired passage.

## General information on recording

- If you don't intend to record via the microphone, unplug it to avoid unwanted recording source.
- For recording, only use tape of IEC type I (normal tape).
- The recording level is set automatically, regardless of the position of the Volume, Vocal, Key control and so forth.
- The type is secured at both ends with leader tape. At the beginning and end of the tape, nothing will be recorded for seven seconds.
- To prevent accidental recording, break out the tab on the left shoulder of the tape side you want to protect.



- Press **REC** in Tuner, Disc or AUX mode, press **REC**, and "CHECK TAPE" will scroll on the display if there is no recordable tape in tape deck 2.

# Tape Operation/Recording

## IMPORTANT!

- Recording is permissible if copyright or other rights of third parties are not infringed upon.
- Recording is possible only in tape deck.

## Preparation for recording

- 1 Press **TAPE** (**TAPE 1•2**) to select TAPE 2.
- 2 Load a recordable tape into tape deck 2 with the full spool to the left.
- 3 Prepare the source to be recorded.
  - DISC** – load the disc(s)
  - TUNER** – tune to the desired radio station.
  - TAPE** – load the prerecorded tape into tape deck 1 with the full spool to the left.
  - AUX•GAME** – connect external equipment.

## When recording is in progress

- 1 Press **DISC**, **TUNER** or **AUX•GAME** to select the source.
- 2 Start to play the selected source.
- 3 Press **REC** to start recording.

## To stop recording

- Press ■ on the system.

## Disc synchro recording

- 1 Press **DISC** to select the disc.
- Press **→/+** ( **|◀/▶|** ) to select a desired track to record.
- You can record programmed tracks in the order you want.
- 2 Press **REC** to start recording.
  - "REC" will flash, but the first 7 seconds of the start passage will not be recorded.

## Selecting another track during recording

- 1 Press **▶||** to interrupt recording.
- 2 Press **→/+** ( **|◀/▶|** ) to select another track.
- 3 Press **▶||** to resume recording.

## To stop recording

- Press ■.
- Recording and disc playback will stop simultaneously.

## Dubbing tapes

- 1 Load the prerecorded tape into tape deck 1.
- You can set the tape to the desired passage where recording will start.
- 2 Press **DUBBING**.
  - Playing and recording will start simultaneously.
- Dubbing of tapes is possible on one side of the tape only. To continue recording on the reverse side, at the end of side A for example, flip the tape to side B and repeat the procedure.

## To stop dubbing

- Press ■.

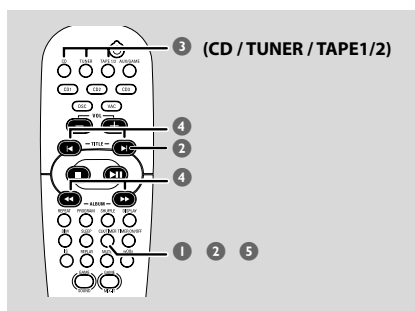
# Timer Operations

## Setting the timer

The system can switch on to CD, TUNER or TAPE mode automatically at a preset time, serving as an alarm to wake you up.

### IMPORTANT!

- Before setting the timer, ensure that the clock is set correctly.
- The volume of the timer will increase gradually to the last tuned volume level. If the last tuned volume level is too low, the set will then increase to a predetermined minimum audible level.



- At the preset time, the selected sound source will be played for 30 minutes before it switches to standby mode (if no button is pressed within the time frame).
  - CD – playing the first track of the disc. If the disc tray is empty, it will switch to Tuner mode.
  - TUNER – playing the last tuned radio station.
  - TAPE – playing the tape.

## Activating/deactivating the timer

- Press **TIMER ON/OFF** on the remote control to turn off the timer or turn on to the last setting again.
  - If activated, the timer information will display for a few seconds, then the system resumes to the last active source or stays in standby mode.
  - If deactivated, "CANCEL" is displayed.

### Note:

- The system will exit timer setting mode if no button is pressed within 90 seconds.

- 1 Press and hold **CLK/TIMER** (or **CLOCK•TIMER** on main unit) until "SELECT CLOCK OR TIMER" is displayed.
- 2 Press **+** (or **▶** on the remote control) to change the display to "TIMER" and press **CLK/TIMER** again to confirm.
- 3 Press **CD**, **TUNER** or **TAPE1/2** to select the wake-up source.
  - CD → "CD XX:XX"
  - TUNER → "TU XX:XX"
  - TAPE → "TA XX:XX"
- 4 Press **◀◀** or **▶▶** (or **◀◀** / **▶▶** on the remote control) (for hours) and **-** or **+** (or **◀** / **▶** on the remote control) (for minutes) repeatedly to set the wake-up time.
- 5 Press **CLK/TIMER** to store the setting.
  - The timer will always be switched on once it has been set.
  - icon remains on the display. It indicates the timer is activated.




## Setting the sleep timer

The sleep timer enables the system to switch to standby mode automatically at a preset time.

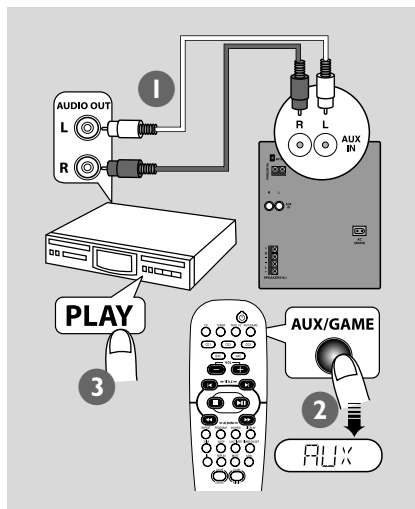
- 1 Press **SLEEP** repeatedly until it reaches the desired preset turn-off time.  
 → Following options are available (time in minutes):  
 15 → 30 → 45 → 60 → 90 → 120 →  
 OFF → 15 ...  
 → **SLEEP** is shown, except for "OFF" mode.  
 → To view or change the setting, repeat the above.
- 2 Before the system switches to standby mode, a countdown of 10 seconds is displayed.  
 "SLEEP 10" → "SLEEP 9" ... → "SLEEP 1" → "SLEEP"

## Cancelling the sleep timer function

- Press **SLEEP** repeatedly until "OFF" is displayed, or press the **STANDBY ON** .

## Listening to an external source

You can listen to the sound of the connected external device through your system's speakers.



- 1 Use the red/white audio cables to connect the system's **AUX IN (R/L)** terminals to the AUDIO OUT terminals on the other audio/visual device (such as a TV, VCR, Laser Disc player; DVD player or CD recorder)  
 → If the connected device has only a single audio out terminal, connect it to the AUX IN left terminal. Alternatively, you can use a "single to double" cinch cable, but the output sounds still remain mono.
- 2 Press **AUX/GAME** until "AUX" is displayed.
- 3 Press **PLAY** on the connected device to start playback.

### Notes:

- All the sound control features (DSC, VAC for example) are available for selection.
- Always refer to the owner's manual of other equipment for complete connection and use details.

# Specifications

## AMPLIFIER

Output power .....	220 W total power
.....	2 x 110 W RMS*
.....	2 x 90 W FTC*
Signal-to-noise ratio .....	≥ 62 dBA (IEC)
Frequency response .....	63 – 16000 Hz, –3 dB
Input sensitivity	
AUX In .....	640 mV
Gameport .....	310 mV
Output	
Speakers .....	≥ 4 Ω
Headphones .....	32 Ω – 1000 Ω
* (4 Ω, 1 kHz, 10%THD)	

## DISC PLAYER

Programmable tracks .....	99
Frequency response .....	50 – 18000 Hz, –3 dB
Signal-to-noise ratio .....	≥ 62 dBA
Channel separation .....	≥ 35 dB (1 kHz)
MPEG 1 Layer 3 (MP3-CD) .....	MPEG AUDIO
MP3-CD bit rate .....	32-256 kbps
.....	(128 kbps advised)
Sampling frequencies .....	32, 44.1, 48 kHz

## TUNER

FM wave range .....	87.5 – 108 MHz
AM wave range .....	530 – 1700 kHz
Number of presets .....	40
Antenna	
FM .....	300 Ω wire
AM .....	Loop antenna

## SPEAKERS

System .....	3 way, Bass reflex
Impedance .....	4 Ω
Woofer .....	1 x 6.5"
Tweeter .....	1 x 2" Ferro fluid cooled
Dimensions (w x h x d) .	240 x 358 x 230 (mm)
Dimensions (w x h x d) .....	9.45" x 14.1" x 9.05" (inch)
Weight .....	4.35 kg each
.....	9.6 pounds each

## GENERAL

Material/finish .....	Polystyrene/Metal
AC Power .....	120 V / 60 Hz
Power Consumption	
Active .....	25 W
Standby .....	< 15 W
Eco Power Standby .....	< 1 W
Dimensions (w x h x d) .	265 x 322 x 390 (mm)
Weight (without speakers) .....	7.75 kg

**Specifications and external appearance are subject to change without notice.**

## WARNING

**Under no circumstances should you try to repair the system yourself, as this will invalidate the warranty. Do not open the system as there is a risk of electric shock.**

**If a fault occurs, first check the points listed below before taking the system for repair. If you are unable to remedy a problem by following these hints, consult your dealer or Philips for help.**

Problem	Solution
Radio reception is poor.	<ul style="list-style-type: none"> <li>✓ If the signal is too weak, adjust the antenna or connect an external antenna for better reception.</li> <li>✓ Increase the distance between the system and your TV or VCR.</li> </ul>
"NO DISC" is displayed or the disc cannot be played.	<ul style="list-style-type: none"> <li>✓ Insert a disc.</li> <li>✓ Load in the disc with the labeled side facing up.</li> <li>✓ Replace or clean the disc, see "Care and safety information".</li> <li>✓ Use a finalised CD-R(W) or a correct format disc.</li> </ul>
The system does not react when buttons are pressed.	<ul style="list-style-type: none"> <li>✓ Remove and reconnect the AC power cord and switch on the system again.</li> </ul>
Sound cannot be heard or is of poor quality.	<ul style="list-style-type: none"> <li>✓ Adjust the volume.</li> <li>✓ Disconnect the headphones.</li> <li>✓ Check that the speakers are connected correctly.</li> <li>✓ Check that the AC power cord is connected properly.</li> </ul>
The remote control does not function properly.	<ul style="list-style-type: none"> <li>✓ Select the source (CD or TUNER, for example) before pressing the function button (▶  , ◀◀, ▶▶).</li> <li>✓ Reduce the distance between the remote control and the system.</li> <li>✓ Replace the battery.</li> <li>✓ Point the remote control directly toward the IR sensor.</li> </ul>
The timer is not working.	<ul style="list-style-type: none"> <li>✓ Set the clock correctly.</li> <li>✓ Press TIMER ON/OFF to switch on the timer.</li> </ul>
The system displays features automatically and buttons start flashing.	<ul style="list-style-type: none"> <li>✓ Press and hold DEMO STOP on the main unit to switch off the demonstration mode.</li> </ul>

## PHILIPS LIMITED WARRANTY

### One (1) Year Labor and Parts Repair

**PHILIPS CONSUMER ELECTRONICS** warrants this product against defect in material or workmanship, subject to any conditions set forth as follows:

#### PROOF OF PURCHASE:

You must have proof of the date of purchase to receive warranted repair on the product. A sales receipt or other document showing the product and the date that you purchased the product as well as the authorized retailer included, is considered such proof.

#### COVERAGE:

(If this product is determined to be defective)

**LABOR:** For a period of one (1) year from the date of purchase, Philips will repair or replace the product, at its option, at no charge, or pay the labor charges to any Philips authorized repair facility. After the period of one (1) year, Philips will no longer be responsible for charges incurred.

**PARTS:** For a period of one (1) year from the date of purchase, Philips will supply, at no charge, new or rebuilt replacement parts in exchange for defective parts, through a Philips authorized service center.

Note: If Philips is unable to provide service in your area, receipt of the paid service can be submitted for consideration of adjustment or full reimbursement at Philips discretion.

#### EXCLUDED FROM WARRANTY COVERAGE

Your warranty does not cover:

- Labor charges for installation or setup of the product, adjustment of customer controls on the product, and installation or repair of antenna systems outside of the product.
- Product repair and/or part replacement because of improper installation, connections to improper voltage supply, abuse, neglect, misuse, accident, unauthorized repair or other cause not within the control of Philips.
- A product that requires modification or adaptation to enable it to operate in any country other than the country for which it was designed, manufactured, approved and/or authorized, or repair of products damaged by these modifications.
- Damage occurring to product during shipping when improperly packaged or cost associated with packaging.
- Product lost in shipment and no signature verification of receipt can be provided.
- A product used for commercial or institutional purposes (including but not limited to rental purposes).
- Products sold AS IS or RENEWED.

#### CARRY-IN / SHIP-IN WARRANTY

For Carry-In warranty repair, take the product to a Philips authorized service center for repair. When the product has been repaired, you must pick up the unit at the center. For Ship-In warranty repair, ship the product to a Philips authorized service center for repair in its original carton and packing material. If you do not have the original carton or packing material, have your product professionally packed for shipping. Ship product via a traceable carrier. When it is necessary for you to ship the product to Philips for repair, you will pay the shipping cost for shipment to Philips. Philips will pay the shipping costs when returning the product to you.

#### TO OBTAIN WARRANTY SERVICE IN THE U.S.A., PUERTO RICO, OR U.S. VIRGIN ISLANDS...

Contact Philips Customer Care Center at:  
1-888-PHILIPS (1-888-744-5477)

#### TO OBTAIN WARRANTY SERVICE IN CANADA...

1-800-661-6162 (French Speaking)  
1-888-PHILIPS (1-888-744-5477) - (English or Spanish Speaking)

REPAIR OR REPLACEMENT AS PROVIDED UNDER THIS WARRANTY IS THE EXCLUSIVE REMEDY FOR THE CONSUMER. PHILIPS SHALL NOT BE LIABLE FOR ANY INCIDENTAL OR CONSEQUENTIAL DAMAGES FOR BREACH OF ANY EXPRESS OR IMPLIED WARRANTY ON THIS PRODUCT, EXCEPT TO THE EXTENT PROHIBITED BY APPLICABLE LAW, ANY IMPLIED WARRANTY OF MERCHANTABILITY OR FITNESS FOR A PARTICULAR PURPOSE ON THIS PRODUCT IS LIMITED IN DURATION TO THE DURATION OF THIS WARRANTY.

Some states do not allow the exclusions or limitation of incidental or consequential damages, or allow limitations on how long an implied warranty lasts, so the above limitations or exclusions may not apply to you. In addition, if you enter into a service contract agreement with the PHILIPS partnership within ninety (90) days of the date of sale, the limitation on how long an implied warranty lasts does not apply.

*This warranty gives you specific legal rights. You may have other rights which vary from state/province to state/province.*

Philips, P.O. Box 671539, Marietta, GA. 30006-0026

(Warranty: 4835 710 27175)