

Register your product and get support at  
[www.philips.com/welcome](http://www.philips.com/welcome)

MCM3000



---

EN	User manual	3
CS	Příručka pro uživatele	21
DA	Brugervejledning	39
DE	Benutzerhandbuch	57

---

EL	Εγχειρίδιο χρήσης	77
ES	Manual del usuario	97
FI	Käyttöopas	115
FR	Mode d'emploi	133

# PHILIPS

## ČESKA REPUBLIKA

Záruka: Pokud byste z jakéhokoli důvodu přístroj demontovali, vždy nejdříve vytáhněte síťovou zástrčku.

Přístroj chraňte před jakoukoli vlhkostí i před kapkami vody.

## ČESKA REPUBLIKA

Výstraha! Tento přístroj pracuje s laserovým paprskem. Při nesprávné manipulaci s přístrojem (v rozporu s tímto návodem) může dojít k nebezpečnému ozáření. Proto přístroj za chodu neotevírejte ani nesnímejte jeho kryty. Jakoukoli opravu vždy svěřte specializovanému servisu.

Nebezpečí! Při sejmutí krytů a odjištění bezpečnostních spínačů hrozí nebezpečí neviditelného laserového záření!

Chraňte se před přímým zásahem laserového paprsku.

Pokud byste z jakéhokoli důvodu přístroj demontovali, vždy nejdříve vytáhněte síťovou zástrčku.

Přístroj chraňte před jakoukoli vlhkostí i před kapkami vody.

Advarsel: Usynlig laserstråling ved åbning når sikkerhedsafbrydere er ude af funktion. Undgå utsættelse for stråling.

Bemærk: Netafbryderen er sekundært indkoblet og afbryder ikke strømmen fra nettet. Den indbyggede netdel er derfor tilsluttet til lysnettet så længe netstikket sidder i stikkontakten.

## Norge

Typeskilt finnes på apparatens underside.

Observer: Nettbryteren er sekundært innkopleet. Den innebygde nettdelen er derfor ikke frakopleet nettet så lenge apparatet er tilsluttet nettkontakten.

For å redusere faren for brann eller elektrisk støt, skal apparatet ikke utsettes for regn eller fuktighet.

## Luokan 1 laserlaite Varoituis!

Laitteen käyttäminen muulla kuin tässä käyttöohjeessa mainitulla tavalla saattaa altistaa käyttäjän turvallisuusluokan 1 ylittävälle näkymättömälle lasersäteilylle.

Oikeus muutoksiin varataan. Laite ei saa olla alttiina tippu- ja roiskevedelle. Huom.

Toiminnanvalitsin on kytketty toisiopuolelle, eikä se kytke laitetta irti sähköverkosta.

Sisäänrakennettu verkkoosa on kytkettynä sähköverkkoon aina silloin, kun pistoke on pistorasiassa.

Huom. Toiminnanvalitsin on kytketty toisiopuolelle, eikä se kytke laitetta irti sähköverkosta.

Sisäänrakennettu verkko-osa on kytkettynä sähköverkkoon aina silloin, kun pistoke on pistorasiassa.

# Contents

---

<b>1 Important</b>	4
Safety	4

---

<b>2 Your micro system</b>	6
Introduction	6
What's in the box	6
Overview of the main unit	7
Overview of the remote control	9

---

<b>3 Get started</b>	10
Connect speakers	10
Connect FM antenna	10
Connect power	10
Prepare the remote control	11
Set clock	11
Turn on	11

---

<b>4 Play</b>	12
Play from disc	12
Play from USB	12
Play options	12
Adjust sound	13

---

<b>5 Listen to the radio</b>	14
Tune to a radio station	14
Program radio stations automatically	14
Program radio stations manually	14
Select a preset radio station	14
Show RDS information	14

---

<b>6 Other features</b>	15
Set the alarm timer	15
Set the sleep timer	15
Play from external audio device	15
Listen through the headphone	16
Adjust display brightness	16

---

<b>7 Product information</b>	17
Specifications	17
USB playability information	18
Supported MP3 disc formats	18

---

<b>8 Troubleshooting</b>	19
--------------------------	----

---

<b>9 Notice</b>	20
-----------------	----

# 1 Important

## Safety



This 'bolt of lightning' indicates uninsulated material within your unit may cause an electrical shock. For the safety of everyone in your household, please do not remove product covering.

The 'exclamation point' calls attention to features for which you should read the enclosed literature closely to prevent operating and maintenance problems.

**WARNING:** To reduce the risk of fire or electric shock, this apparatus should not be exposed to rain or moisture and objects filled with liquids, such as vases, should not be placed on this apparatus.

**CAUTION:** To prevent electric shock, match wide blade of plug to wide slot, fully insert.

- ① Read these instructions.
- ② Keep these instructions.
- ③ Heed all warnings.
- ④ Follow all instructions.
- ⑤ Do not use this apparatus near water.
- ⑥ Clean only with dry cloth.
- ⑦ Do not block any ventilation openings. Install in accordance with the manufacturer's instructions.
- ⑧ Do not install near any heat sources such as radiators, heat registers, stoves,

or other apparatus (including amplifiers) that produce heat.

- ⑨ Protect the power cord from being walked on or pinched, particularly at plugs, convenience receptacles, and the point where they exit from the apparatus.
- ⑩ Only use attachments/accessories specified by the manufacturer.
- ⑪ Use only with the cart, stand, tripod, bracket, or table specified by the manufacturer or sold with the apparatus. When a cart is used, use caution when moving the cart/apparatus combination to avoid injury from tip-over.



- ⑫ Unplug this apparatus during lightning storms or when unused for long periods of time.
- ⑬ Refer all servicing to qualified service personnel. Servicing is required when the apparatus has been damaged in any way, such as power-supply cord or plug is damaged, liquid has been spilled or objects have fallen into the apparatus, the apparatus has been exposed to rain or moisture, does not operate normally, or has been dropped.
- ⑭ Battery usage CAUTION – To prevent battery leakage which may result in bodily injury, property damage, or damage to the remote control:
  - Install all batteries correctly, + and - as marked on the remote control.
  - Do not mix batteries (old and new or carbon and alkaline, etc.).
  - Remove batteries when the remote control is not used for a long time.
- ⑮ Apparatus shall not be exposed to dripping or splashing.

- ⑩ Do not place any sources of danger on the apparatus (e.g. liquid filled objects, lighted candles).
- ⑪ Where the MAINS plug or an appliance coupler is used as the disconnect device, the disconnect device shall remain readily operable.



### Warning

- Never remove the casing of this apparatus.
- Never lubricate any part of this apparatus.
- Never place this apparatus on other electrical equipment.
- Keep this apparatus away from direct sunlight, naked flames or heat.
- Never look into the laser beam inside this apparatus.
- Ensure that you always have easy access to the power cord, plug or adaptor to disconnect this apparatus from the power.



### Caution

- Use of controls or adjustments or performance of procedures other than herein may result in hazardous radiation exposure or other unsafe operation.

- Set your volume control at a low setting.
- Slowly increase the sound until you can hear it comfortably and clearly, without distortion.

### Listen for reasonable periods of time:

- Prolonged exposure to sound, even at normally 'safe' levels, can also cause hearing loss.
- Be sure to use your equipment reasonably and take appropriate breaks.

### Be sure to observe the following guidelines when using your headphones.

- Listen at reasonable volumes for reasonable periods of time.
- Be careful not to adjust the volume as your hearing adapts.
- Do not turn up the volume so high that you can't hear what's around you.
- You should use caution or temporarily discontinue use in potentially hazardous situations. Do not use headphones while operating a motorized vehicle, cycling, skateboarding, etc.; it may create a traffic hazard and is illegal in many areas.

## Hearing safety

### Listen at a moderate volume.

- Using headphones at a high volume can impair your hearing. This product can produce sounds in decibel ranges that may cause hearing loss for a normal person, even for exposure less than a minute. The higher decibel ranges are offered for those that may have already experienced some hearing loss.
- Sound can be deceiving. Over time your hearing 'comfort level' adapts to higher volumes of sound. So after prolonged listening, what sounds 'normal' can actually be loud and harmful to your hearing. To guard against this, set your volume to a safe level before your hearing adapts and leave it there.

### To establish a safe volume level:

## 2 Your micro system

- MP3 link cable
- FM antenna
- 8 x rubber cushions for speakers
- Quick start guide
- User manual

Congratulations on your purchase, and welcome to Philips! To fully benefit from the support that Philips offers, register your product at [www.philips.com/welcome](http://www.philips.com/welcome).

---

### Introduction

**With this unit, you can:**

- enjoy audio from discs, USB devices, and other external devices
- listen to radio stations

**You can enrich sound output with these sound effects:**

- Digital Sound Control (DSC)
- Dynamic Bass Boost (DBB)

**The unit supports these media formats:**



---

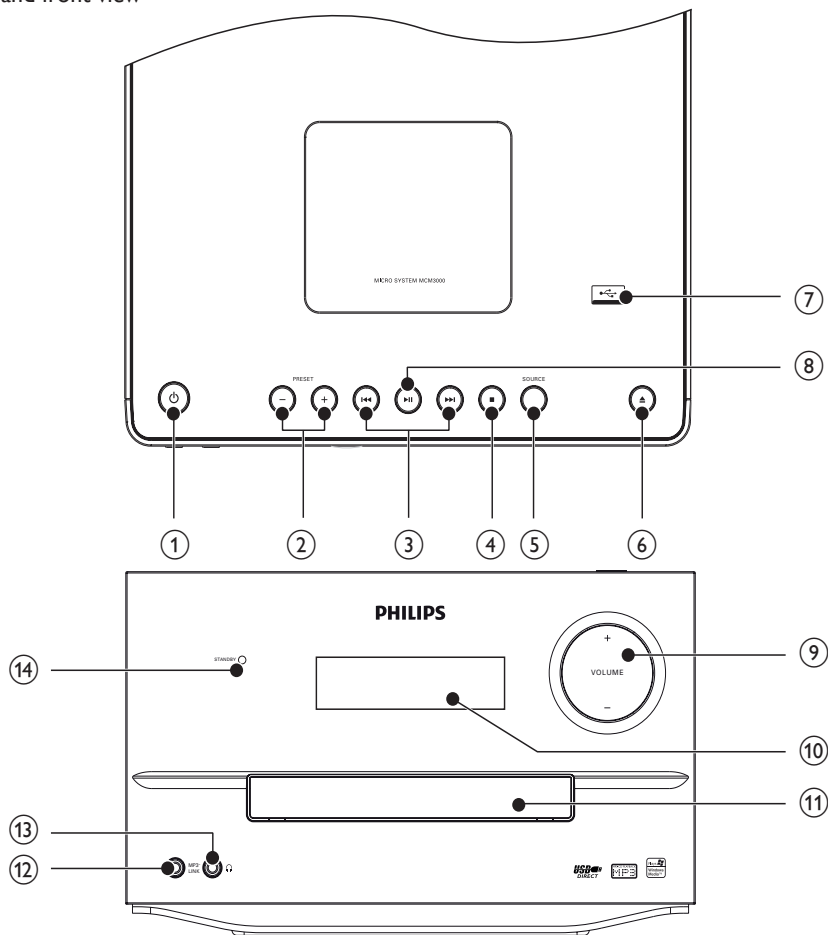
### What's in the box

Check and identify the contents of your package:

- Main unit
- 2 x speakers
- Remote control

# Overview of the main unit

Top and front view



## ①

- Turn on/off the unit, switch to standby mode or Eco power standby mode.

## ② PRESET +/-

- Select a preset radio station.
- Skip to the previous/next album.

## ③

- Skip to the previous/next track.

- Search within a track/disc/USB.
- Tune to a radio station.
- Adjust time.

## ④

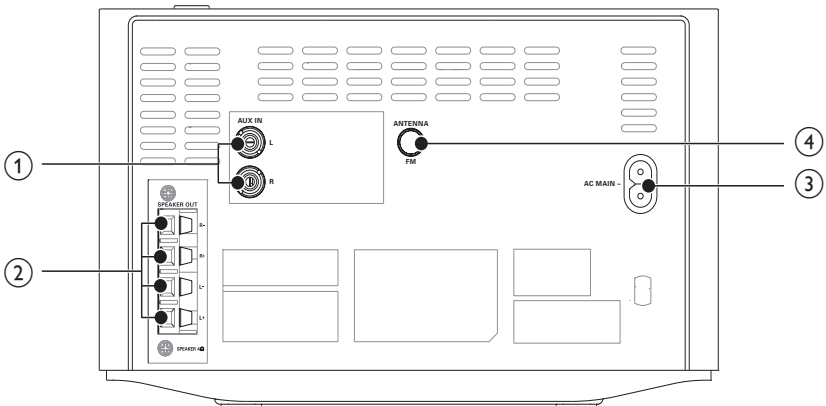
- Stop play or erase a program.

## ⑤ SOURCE

- Select a source: CD, FM, USB, MP3 LINK, or AUX-IN.

- ⑥ ▲
  - Open/close the disc compartment.
- ⑦ ↔
  - Jack for a USB mass storage device.
- ⑧ ▶||
  - Start or pause play.
- ⑨ VOLUME + / -
  - Adjust volume.
- ⑩ Display panel
  - Show current status.
- ⑪ Disc compartment
- ⑫ MP3-LINK
  - Audio input jack (3.5mm) for an external audio device.
- ⑬ 🎧
  - Jack for the headphone.
- ⑭ STANDBY

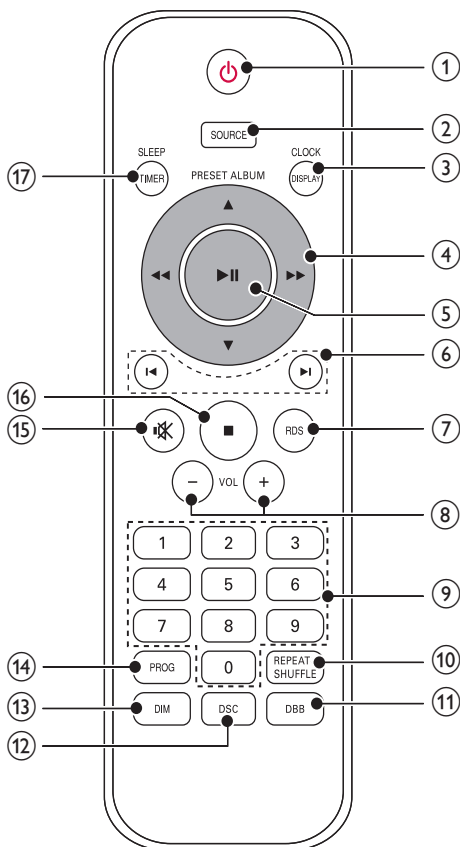
Back view



- ① AUX-IN
  - connect an external audio device.
- ② SPEAKER OUT
  - Connect the speaker.
- ③ AC MAIN~
  - Power supply socket.
- ④ FM ANTENNA
  - Improve FM reception.



## Overview of the remote control



- ① **⏻**
- Turn on/off the unit, switch to standby mode or Eco power standby mode.
- ② **SOURCE**
- Select a source: CD, FM, USB, MP3 LINK, or AUX-IN.
- ③ **CLOCK/DISPLAY**
- Set the clock.
  - Select display information during play.

- ④ **PRESET/ALBUM ▲/▼/◀◀▶▶**
- ▲/▼  
Select a preset radio station.  
Skip to previous/next album.
  - ◀◀▶▶  
Fast search backward or forward.
- ⑤ **▶||**
- Start or pause play.
- ⑥ **◀▶▶▶**
- Skip to previous/next track.
  - Tune to a radio station.
  - Adjust time.
- ⑦ **RDS**
- For selected FM radio stations: display RDS information.
- ⑧ **VOL +/-**
- Adjust volume.
- ⑨ **Numeric Keypad 0 - 9**
- Select a track from a disc directly.
  - Select a preset radio station.
- ⑩ **REPEAT/SHUFFLE**
- Play a track or all tracks repeatedly.
  - Play tracks randomly.
- ⑪ **DBB**
- Turn on or off dynamic bass enhancement.
- ⑫ **DSC**
- Select a preset sound setting.
- ⑬ **DIM**
- Adjust the display brightness.
- ⑭ **PROG**
- Program tracks.
  - Program radio stations.
- ⑮ **🔇**
- Mute or restore volume.
- ⑯ **■**
- Stop play or erase a program.
- ⑰ **SLEEP/TIMER**
- Set sleep timer.
  - Set alarm timer.

# 3 Get started

## ! Caution

- Use of controls or adjustments or performance of procedures other than herein may result in hazardous radiation exposure or other unsafe operation.

Always follow the instructions in this chapter in sequence.

If you contact Philips, you will be asked for the model and serial number of this apparatus. The model number and serial number are on the bottom of the apparatus. Write the numbers here:

Model No. \_\_\_\_\_

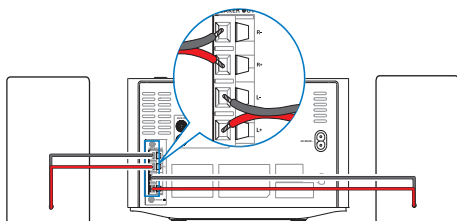
Serial No. \_\_\_\_\_

## Connect speakers

### ≡ Note

- For optimal sound, use the supplied speakers only.
- Connect only speakers with impedance that is the same or higher than the supplied speakers. Refer to the Specifications section of this manual.

Insert the speaker wires completely into the speaker input sockets on the back of the unit.



## Connect FM antenna

### \* Tip

- For optimal reception, fully extend and adjust the position of the antenna.

Connect the supplied FM antenna to the **FM ANTENNA** socket on the main unit.

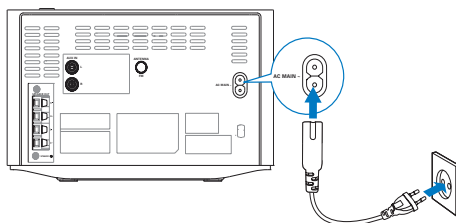
## Connect power

### ! Caution

- Risk of product damage! Ensure that the power supply voltage corresponds to the voltage printed on the back or the underside of the unit.
- Risk of electric shock! When you unplug the AC power cord, always pull the plug from the socket. Never pull the cord.
- Before you connect the AC power cord, ensure that you have completed all other connections.

Connect the power cable to:

- the **AC MAIN~** jack on the main unit.
- the wall socket.



## Prepare the remote control

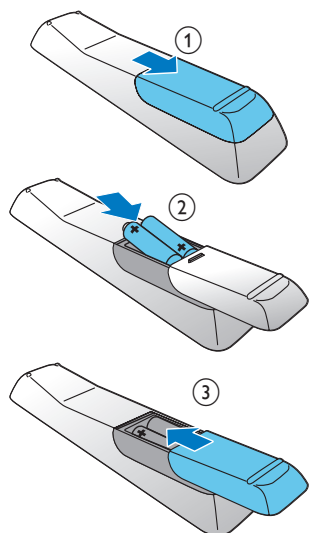


### Caution

- Risk of explosion! Keep batteries away from heat, sunshine or fire. Never discard batteries in fire.
- Risk of decreased battery life! Never mix different brands or types of batteries.
- Risk of product damage! When the remote control is not used for long periods, remove the batteries.

### To insert the remote control battery:

- 1 Open the battery compartment.
- 2 Insert 2 AAA batteries with correct polarity (+/-) as indicated.
- 3 Close the battery compartment.



## Set clock

- 1 In standby mode, press and hold **CLOCK/DISPLAY** on the remote control to activate the clock setting mode.
  - ↳ The hour digits are displayed and begin to blink.

- 2 Press **◀▶** (**◀◀▶▶**) to set the hour.
- 3 Press **CLOCK/DISPLAY**.
  - ↳ The minute digits are displayed and begin to blink.
- 4 Press **◀▶** (**◀◀▶▶**) to set the minute.
- 5 Press **CLOCK/DISPLAY** to confirm.



### Note

- If no button is pressed in 15 minutes, the system exits clock setting mode automatically.

## Turn on

Press **⏻** to turn on.

- ↳ The unit switches to the last selected source.

## Switch to standby mode

Press **⏻** again to switch the unit to standby mode.

- ↳ The clock (if set) appears on the display panel.

### Switch to ECO standby mode:

Press and hold **⏻** for 3 seconds.

- ↳ ECO STANDBY is displayed for 3 seconds and then disappeared.



### Note

- In standby mode, if there is no operation for 15 minutes, the unit switches to Eco Power Standby mode automatically.

### Switch between standby mode and ECO standby mode:

Press and hold **⏻** for 3 seconds.

# 4 Play

## Play from disc

- 1 Press **SOURCE** repeatedly to select CD source.
- 2 Press **▲** to open the disc compartment.
- 3 Insert a disc with the printed side facing upward.
- 4 Press **▲** to close the disc compartment.
- 5 Play starts automatically. If not, press **▶||**.

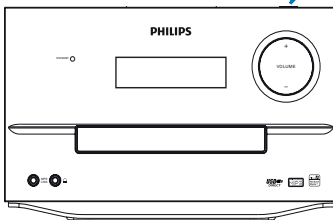
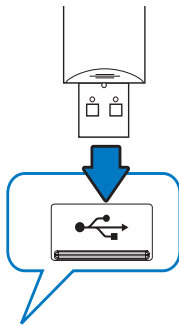
## Play from USB



Note

- Ensure that the USB device contains playable audio content.

- 1 Insert the USB device into the socket.



- 2 Press **SOURCE** repeatedly to select the USB source.  
↳ Play starts automatically. If not, press **▶||**.

- To select a folder, press **▲/▼**.
- To select an audio file, press **◀/▶**.

## Play options

### Pause/resume play

During play, press **▶||** to pause/resume play.

### Repeat/shuffle play

- 1 During play, press **REPEAT/SHUFFLE** repeatedly to select a repeat option or the shuffle play mode.
  - **[REP]**: the current track is played repeatedly.
  - **[REP ALL]**: all tracks are played repeatedly.
  - **[REP ALB]**: all tracks in this album are played repeatedly.
  - **[SHUF]**: all tracks are played randomly.
- 2 To resume normal play, press **REPEAT/SHUFFLE** repeatedly until no option is displayed.

### Skip to a track

For CD:

Press **◀/▶** to select another track.

- To select a track directly, you can also press a key on the numerical keypad.

For MP3 disc and USB:

- 1 Press **▲/▼** to select an album or a folder.
- 2 Press **◀/▶** to select a track or a file.

### Program tracks

You can program a maximum of 20 tracks.

- 1 Press **PROG** to activate the program mode.  
↳ **[PROG]** (program) is displayed.

- 2 For MP3/WMA tracks, press ▲/▼ to select an album.
- 3 Press ◀▶ to select a track, and then press **PROG** to confirm.
- 4 Repeat steps 2 to 3 to program more tracks.
- 5 Press ▶|| to play the programmed tracks.
  - ↳ During play, [**PROG**] (program) is displayed.
    - To erase the program, in the stop position, press ■.

---

## Adjust sound

During play, you can adjust volume through following operations.

Key	Function
<b>VOL +/-</b>	To increase/decrease the volume.
<b>MUTE</b>	To mute/restore sound.
<b>DBB</b>	To turn on or off dynamic bass enhancement. If DBB is activated, [ <b>DBB</b> ] is displayed.
<b>DSC</b>	To select your desired sound effect: [ <b>ROCK</b> ] (rock) [ <b>JAZZ</b> ] (jazz) [ <b>CLASSIC</b> ] (classic) [ <b>POP</b> ] (pop)

# 5 Listen to the radio

## Tune to a radio station

### Note

- Position the antenna as far as possible from TV, VCR, or other radiation source.
- Ensure that you have connected and fully extended the supplied FM antenna.

- 1 Press **SOURCE** repeatedly to select FM.
- 2 Press and hold **I◀▶I** (**I◀▶▶I**) for more than 2 seconds.
  - ↳ [SEARCH] (search) is displayed.
  - ↳ The radio tunes to a station with strong reception automatically.
- 3 Repeat step 3 to tune to more stations.

### To tune to a weak station:

Press **I◀▶I** (**I◀▶▶I**) repeatedly until you find optimal reception.

## Program radio stations automatically

### Note

- You can program a maximum of 20 preset radio stations (FM).

- In tuner mode, press and hold **PROG** for 3 seconds to activate automatic programming.
- ↳ [AUTO SCAN] (auto scan) is displayed.
  - ↳ All available stations are programmed in the order of waveband reception strength.
  - ↳ The first programmed radio station is broadcast automatically.

## Program radio stations manually

- 1 In tuner mode, tune to a radio station.
- 2 Press **PROG** to activate programming mode.
- 3 Press **▲▼** to select a number from 1–20 for this radio station, and then press **PROG** to confirm.
- 4 The preset number and the frequency of the preset station are displayed.
- 5 Repeat steps 2-3 to program other stations.
- 6 Press and hold **I◀▶I** for 3 seconds to search for the nearest station.

### Note

- To overwrite a programmed station, store another station in its place.

## Select a preset radio station

In tuner mode, press **▲▼** to select a preset number:

- You can also press the numeric buttons to select a preset number directly.

## Show RDS information

RDS (Radio Data System) is a service that allows FM stations to show additional information. If you tune to an RDS station, an RDS icon and the station name are displayed.

- 1 Tune to an RDS station.
- 2 Press **RDS** repeatedly to scroll through the following information (if available):
  - ↳ Station name
  - ↳ Program type such as [NEWS] (news), [SPORT] (sport), [POP M] (pop music)...
  - ↳ RDS RT
  - ↳ Frequency

## 6 Other features

### Set the alarm timer

This unit can be used as an alarm clock. You can select CD, FM, or USB as alarm source.

#### Note

- Make sure that you have set the clock correctly.



- 1 In standby mode, press and hold **SLEEP/TIMER** until **[SET TIMER]** (set timer) scrolls on the display.  
↳ **[SELECT SOURCE]** (select source) scrolls on the screen.
- 2 Press **SOURCE** repeatedly to select a source: CD, FM, or USB.
- 3 Press **SLEEP/TIMER** to confirm.  
↳ The hour digits are displayed and begin to blink.
- 4 Press **⏪** (**⏪⏪**) repeatedly to set hour, and then press **SLEEP/TIMER** to confirm.  
↳ The minute digits are displayed and begin to blink.
- 5 Press **⏪** (**⏪⏪**) to set minute, and then press **SLEEP/TIMER** to confirm.  
↳ **VOL** (volume) is displayed and begins to blink.
- 6 Press **⏪** (**⏪⏪**) to adjust volume, and then press **SLEEP/TIMER** to confirm.  
↳ The **SLEEP/TIMER** icon is displayed.

#### Note

- If no button is pressed in 15 minutes, the system exits timer setting mode automatically.

#### To activate or deactivate the alarm timer

Press **TIMER ON/OFF** repeatedly to activate or deactivate the alarm.

- ↳ If timer is activated, the display shows .
- ↳ If timer is deactivated,  disappears on the display.

#### Tip

- If CD/USB source is selected, but no disc is placed or no USB connected, the system switches to the tuner source automatically.

### Set the sleep timer

When the unit is turned on, press **SLEEP/TIMER** repeatedly to select a set period of time (in minutes).

- ↳ When sleep timer is activated, **zZ** is displayed.

#### To deactivate sleep timer

- 1 Press **SLEEP/TIMER** repeatedly until **[OFF]** (off) is displayed.  
↳ When sleep timer is deactivated, **zZ** disappears on the display.


### Play from external audio device

You can play from an external audio device such as MP3 player through this unit.

- 1 Connect the audio device.
  - For audio device with red/white audio output sockets:  
Connect a red/white audio cable (not supplied) to the **AUX-IN** sockets and to the audio output sockets on the audio device.
  - For audio device with headphone sockets:  
Connect the supplied MP3-Link cable to the **MP3-LINK** socket and to the headphone socket on the audio device.
- 2 Press **SOURCE** to select **MP3-LINK/AUX-IN** source.
- 3 Play the device.

---

## Listen through the headphone

Plug a headphone into the  socket on the unit.

---

## Adjust display brightness

Press **DIM** repeatedly to select different levels of display brightness:

- High brightness
- Mid brightness
- Low brightness



# 7 Product information



## Note

- Product information is subject to change without prior notice.

## Specifications

### Amplifier

Rated Output Power	2 X 50 W RMS
Frequency Response	80 Hz - 16 kHz
Signal to Noise Ratio	≥60 dB
Aux Input	0.5 V RMS 20 kohm

### Disc

Laser Type	Semiconductor
Disc Diameter	12 cm/8 cm
Support Disc	CD-DA, CD-R, CD-RW, MP3-CD, WMA-CD
Audio DAC	16 Bits/44.1 kHz
Total Harmonic Distortion	<1% (1 kHz)
Frequency Response	60 Hz - 16 kHz (44.1 kHz)
S/N Ratio	>55 dBA

### Tuner (FM)

Tuning Range	87.5 - 108 MHz
Tuning grid	50 KHz
Sensitivity	
- Mono, 26dB S/N Ratio	<22 dBf
- Stereo, 46dB S/N Ratio	>43 dBf
Search Selectivity	>28 dBf
Total Harmonic Distortion	<3%
Signal to Noise Ratio	>50 dB

### Speakers

Speaker Impedance	4 ohm
Speaker Driver	4" woofer + 1" tweeter
Sensitivity	>80 dB/m/W

### General information

AC power	220 - 240 V, 50/60 Hz
Operation Power Consumption	40 W
Eco Standby Power Consumption	< 0.5 W
Audio Output	1 Vpp ± 0.1 Vpp 3.5 kohm
Headphone Output	2 x 2.5 mW 32 ohm
USB Direct	Version 1.1 FS
Dimensions	
- Main Unit (W x H x D)	239 x 141.5 x 230 mm
- Speaker Box (W x H x D)	210.1 x 262 x 142 mm
Weight	
- With Packing	7.4 kg
- Main Unit	1.85 kg
- Speaker Box	1.9 x 2 kg

---

## USB playability information

### Compatible USB devices:

- USB flash memory (USB1.1)
- USB flash players (USB1.1)
- memory cards (requires an additional card reader to work with this unit)

### Supported formats:

- USB or memory file format: FAT12, FAT16, FAT32 (sector size: 512 bytes)
- MP3 bit rate (data rate): 32-320 Kbps and variable bit rate
- WMA v9 or earlier
- Directory nesting up to a maximum of 8 levels
- Number of albums/ folders: maximum 99
- Number of tracks/titles: maximum 999
- ID3 tag v2.0 or later
- File name in Unicode UTF8 (maximum length: 16 bytes)

### Unsupported formats:

- Empty albums: an empty album is an album that does not contain MP3/WMA files, and is not be shown in the display.
- Unsupported file formats are skipped. For example, Word documents (.doc) or MP3 files with extension .dlf are ignored and not played.
- AAC, WAV, PCM audio files
- DRM protected WMA files (.wav, .m4a, .m4p, .mp4, .aac)
- WMA files in Lossless format

- Supported sampling frequencies: 32 kHz, 44.1 kHz, 48 kHz
- Supported Bit-rates: 32~320 (kbps), variable bit rates

---

## Supported MP3 disc formats

- ISO9660, Joliet
- Maximum title number: 999 (depending on file name length)
- Maximum album number: 99

# 8 Troubleshooting



## Warning

- Never remove the casing of this apparatus.

To keep the warranty valid, never try to repair the system yourself.

If you encounter problems when using this apparatus, check the following points before requesting service. If the problem remains unsolved, go to the Philips web site ([www.philips.com/welcome](http://www.philips.com/welcome)). When you contact Philips, ensure that the apparatus is nearby and the model number and serial number are available.

### No power

- Ensure that the AC power cord of the unit is connected properly.
- Ensure that there is power at the AC outlet.
- As a power-saving feature, the system switches off automatically 15 minutes after track play reaches the end and no control is operated.

### No sound or poor sound

- Adjust the volume.
- Disconnect the headphones.
- Check that the speakers are connected correctly.
- Check if the stripped speaker wires are clamped.

### No response from the unit

- Disconnect and reconnect the AC power plug, then turn on the unit again.
- As a power-saving feature, the system switches off automatically 15 minutes after track play reaches the end and no control is operated.

### Remote control does not work

- Before you press any function button, first select the correct source with the remote control instead of the main unit.

- Reduce the distance between the remote control and the unit.
- Insert the battery with its polarities (+/- signs) aligned as indicated.
- Replace the battery.
- Aim the remote control directly at the sensor on the front of the unit.

### No disc detected

- Insert a disc.
- Check if the disc is inserted upside down.
- Wait until the moisture condensation at the lens has cleared.
- Replace or clean the disc.
- Use a finalized CD or correct format disc.

### Cannot display some files in USB device

- The number of folders or files in the USB device has exceeded a certain limit. This phenomenon is not a malfunction.
- The formats of these files are not supported.

### USB device not supported

- The USB device is incompatible with the unit. Try another one.

### Poor radio reception

- Increase the distance between the unit and your TV or VCR.
- Fully extend the FM antenna.
- Connect an outdoor FM antenna instead.

### Timer does not work

- Set the clock correctly.
- Switch on the timer.

### Clock/timer setting erased

- Power has been interrupted or the power cord has been disconnected.
- Reset the clock/timer.

# 9 Notice

Any changes or modifications made to this device that are not expressly approved by Philips Consumer Lifestyle may void the user's authority to operate the equipment.



This product complies with the radio interference requirements of the European Community.



Your product is designed and manufactured with high quality materials and components, which can be recycled and reused.



When this crossed-out wheeled bin symbol is attached to a product it means that the product is covered by the European Directive 2002/96/EC.

Please inform yourself about the local separate collection system for electrical and electronic products.

Please act according to your local rules and do not dispose of your old products with your normal household waste. Correct disposal of your old product helps to prevent potential negative consequences for the environment and human health.



Your product contains batteries covered by the European Directive 2006/66/EC, which cannot be disposed with normal household waste. Please inform yourself about the local rules on separate collection of batteries because correct disposal helps to prevent

negative consequences for the environmental and human health.

## Environmental information

All unnecessary packaging has been omitted. We have tried to make the packaging easy to separate into three materials: cardboard (box), polystyrene foam (buffer) and polyethylene (bags, protective foam sheet.)

Your system consists of materials which can be recycled and reused if disassembled by a specialized company. Please observe the local regulations regarding the disposal of packaging materials, exhausted batteries and old equipment.



The making of unauthorized copies of copy-protected material, including computer programs, files, broadcasts and sound recordings, may be an infringement of copyrights and constitute a criminal offence. This equipment should not be used for such purposes.

**This apparatus includes this label:**



## Note

- The type plate is located on the bottom of the apparatus.

