

For product support, visit
Para obtener asistencia técnica, visite
Pour en savoir plus sur l'assistance sur les produits, visitez le site

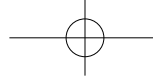
www.philips.com/support

HTL3110B



Quick start guide

PHILIPS



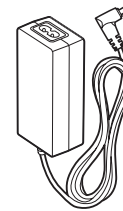
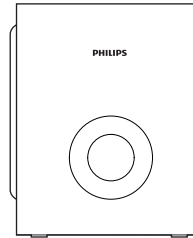
- EN** Before using your product, read all accompanying safety information
- ES** Antes de usar su producto, lea toda la información de seguridad adjunta
- FR-CA** Avant d'utiliser votre appareil, prenez le temps de lire toute l'information de sécurité connexe



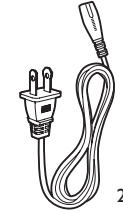
- EN:** For further assistance, call the customer support service in your country.
- To obtain assistance in the U.S.A., Canada, Puerto Rico, or the U.S. Virgin Islands, contact Philips Customer Care Center at 1 866 310 0744
 - To obtain assistance in Mexico, contact Philips Customer Care Center at 01 800 839 1989

- ES:** Para obtener mas informacion, llame al servicio de soporte al cliente de su pais.
- Para obtener asistencia en los Estados Unidos, en Canada, Puerto Rico o en las Islas Virgenes de los Estados Unidos, comuniquese con Centro de atencion al cliente de Philips al 1 866 310 0744
 - Solo para Mexico CENTRO DE ATENCION A CLIENTES LADA. 01 800 839 1989 Solo Para Mexico.

- FR-CA:** Pour obtenir de l'aide supplementaire, communiquez avec le centre de service a la clientele de votre pays.
- Pour obtenir de l'aide aux Etats-Unis, au Canada, a Puerto Rico ou aux Iles Vierges americaines, communiquez avec le centre de service a la clientele Philips au : 1 866 310 0744
 - Pour obtenir l'aide au Mexique, entrez en contact avec le centre de soin de client de Philips a 01 800 839 1989



Power Adapter

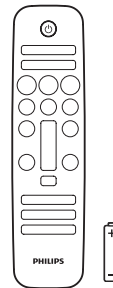


Power Cord

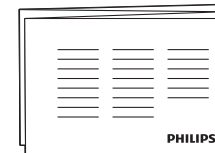
2X



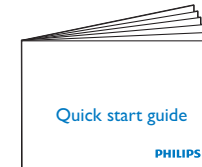
Cable Tie



4 X



PHILIPS



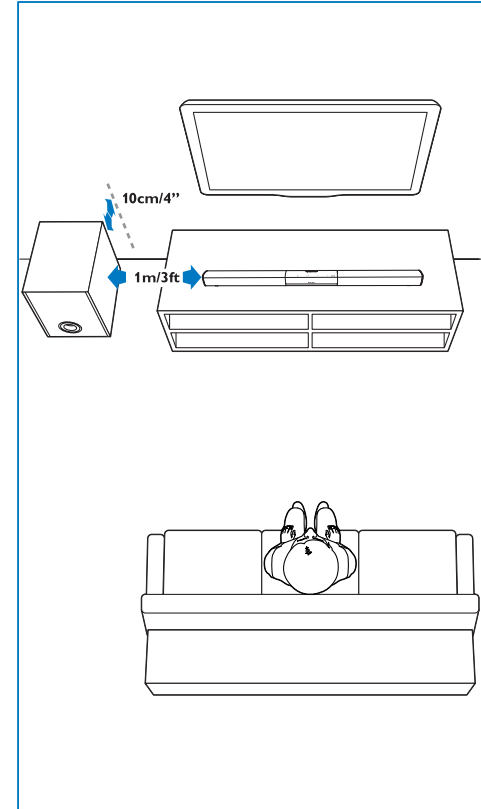
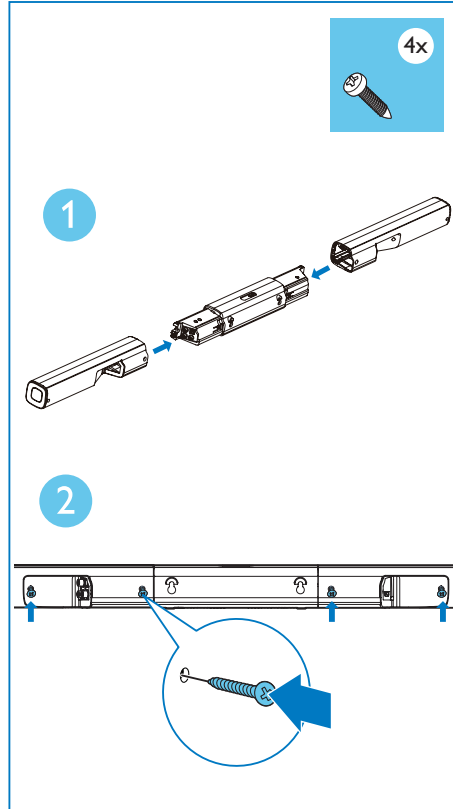
Quick start guide

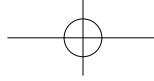
PHILIPS



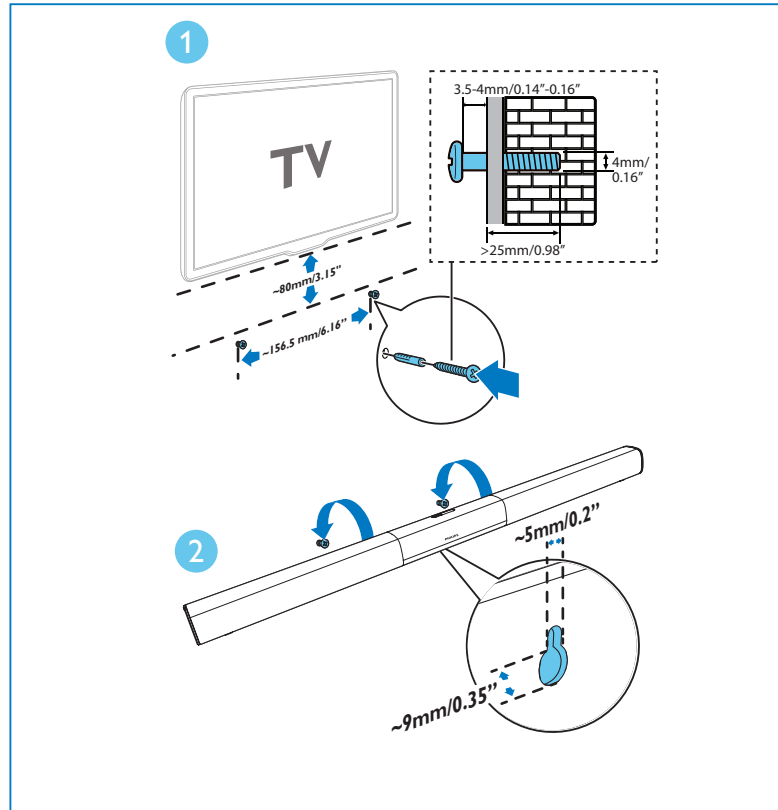
1

- EN** Assemble your SoundBar
Position the SoundBar
- ES** Montaje del SoundBar:
Colocación del SoundBar:
- FR-CA** Montez votre SoundBar:
Positionnez le SoundBar:





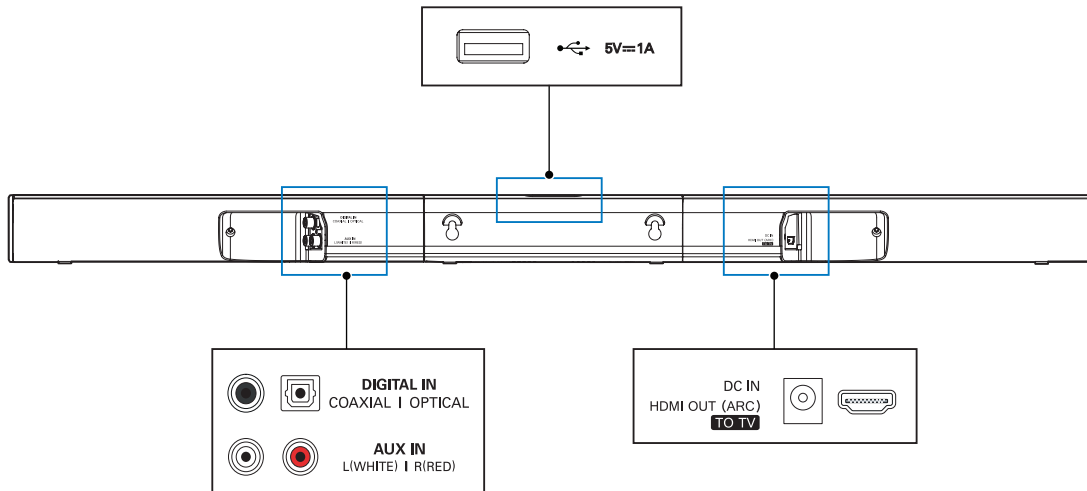
- EN** Wall mount the SoundBar (optional)
- ES** Montaje en pared del SoundBar (opcional)
- FR-CA** Fixez le SoundBar au mur (facultatif)





2

- EN** Connect the SoundBar
- ES** Conexión del SoundBar
- FR-CA** Branchez le SoundBar



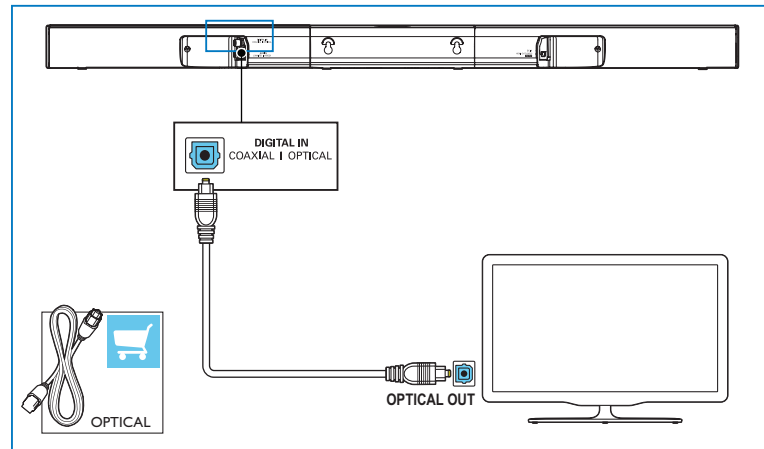
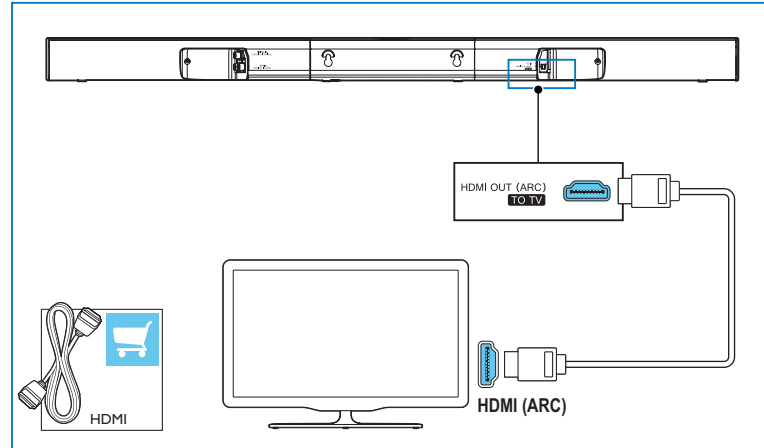


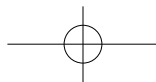
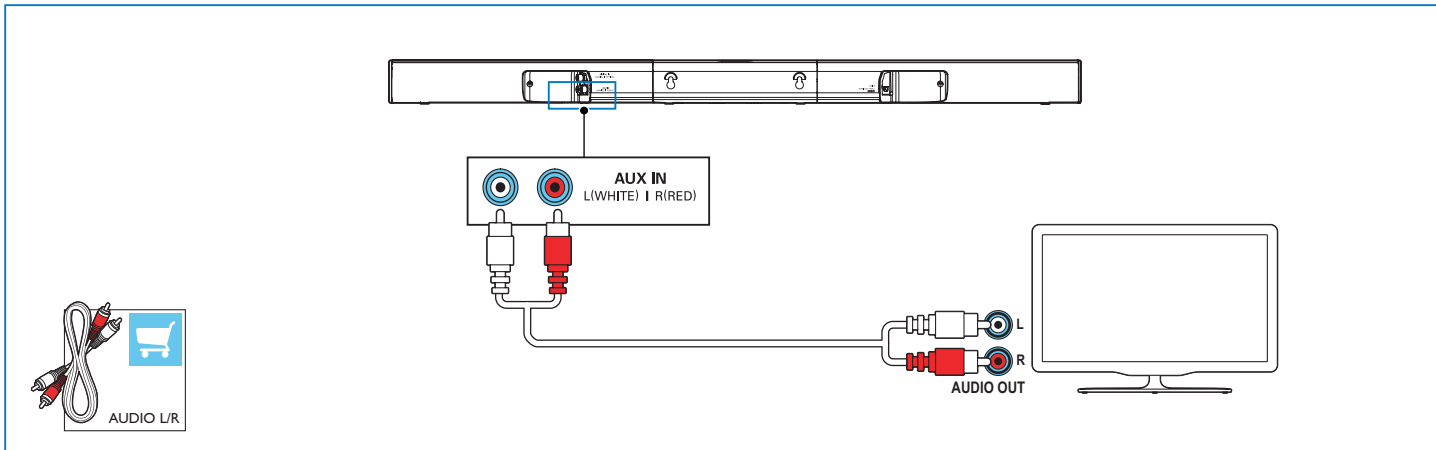
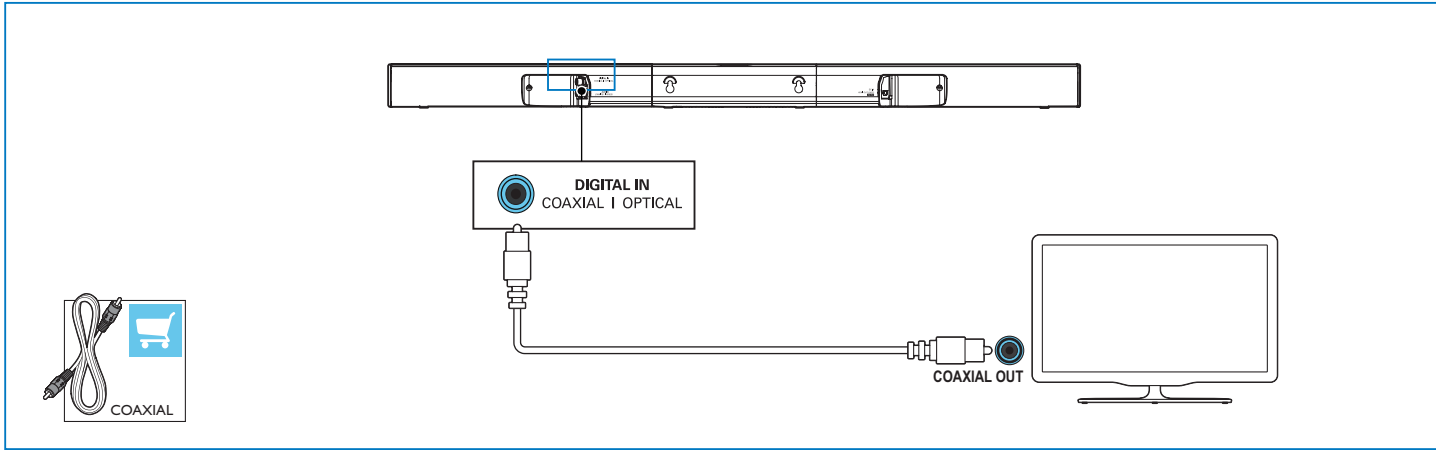
3

EN Hear audio from TV in one of the following ways.

ES Escuche el audio del televisor de una de las siguientes formas.

FR-CA Vous pouvez diffuser l'audio du téléviseur des façons suivantes.

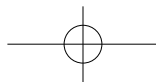
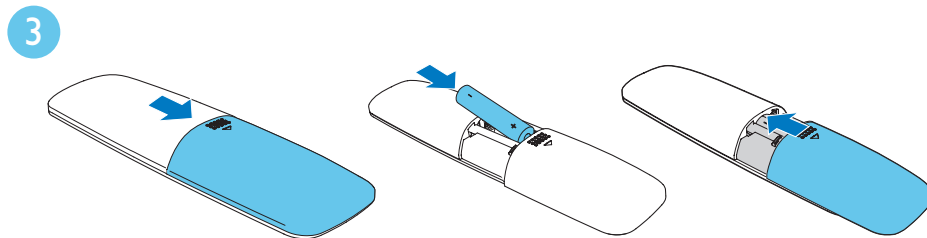
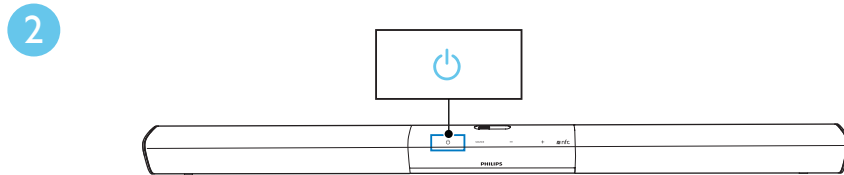
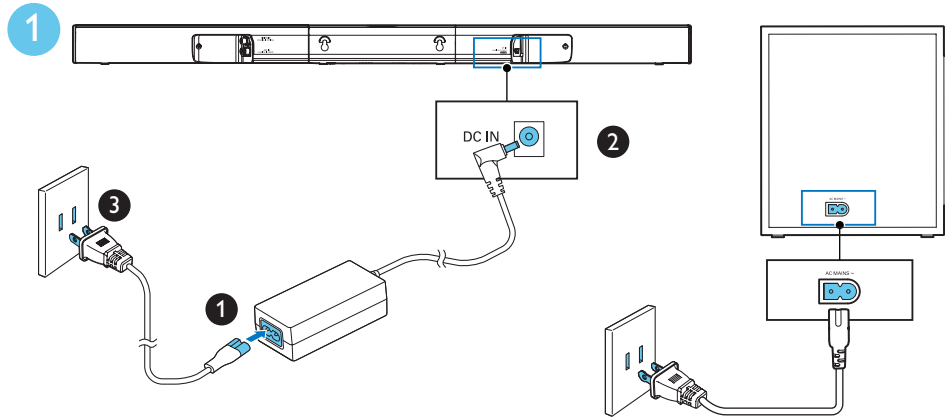






4

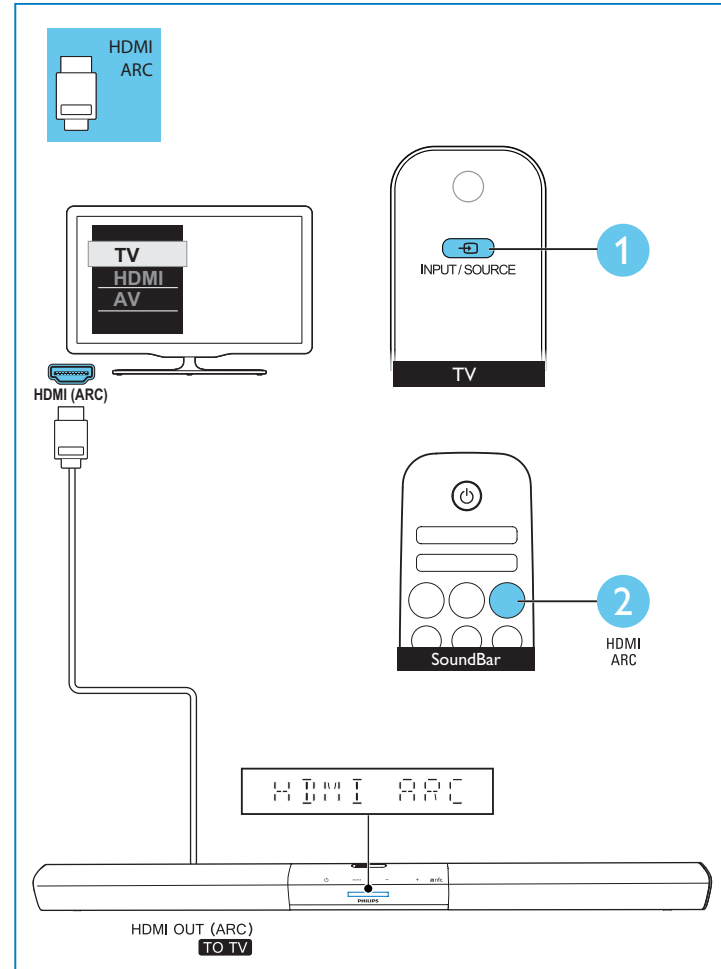
- EN** Switch on the SoundBar
- ES** Encendido del SoundBar
- FR-CA** Allumez le SoundBar

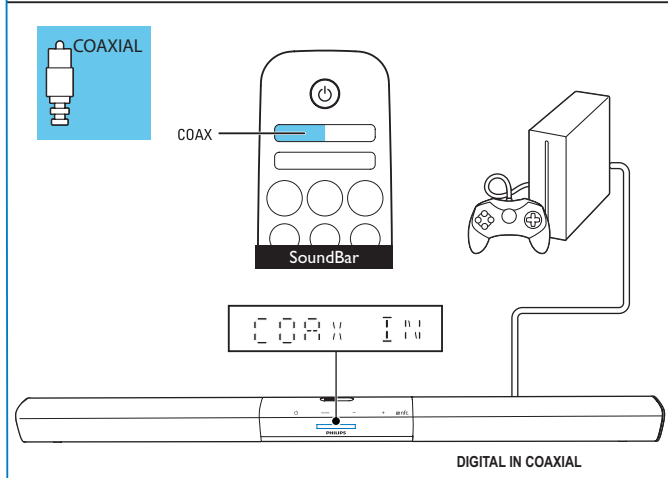
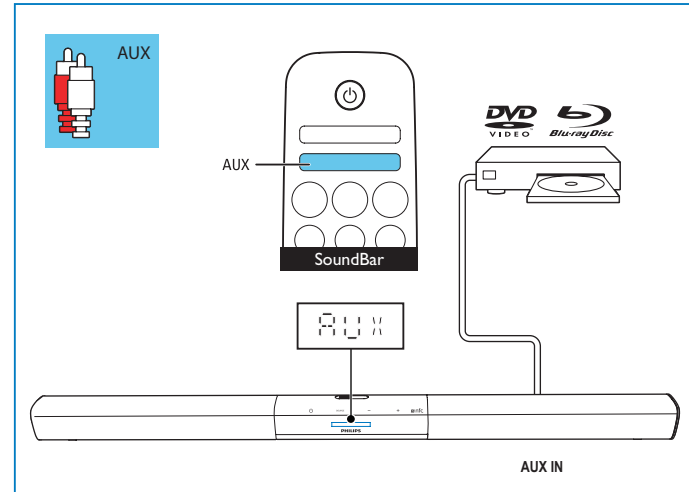
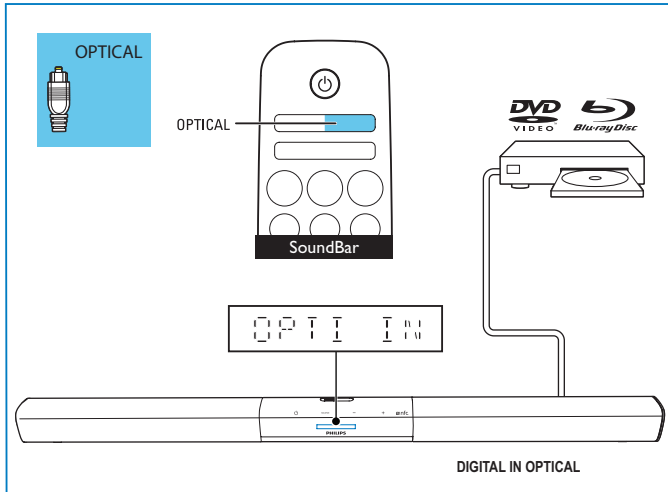




5

- EN** Select the correct audio source
- ES** Selección de la fuente de audio correcta
- FR-CA** Sélectionnez la source audio appropriée





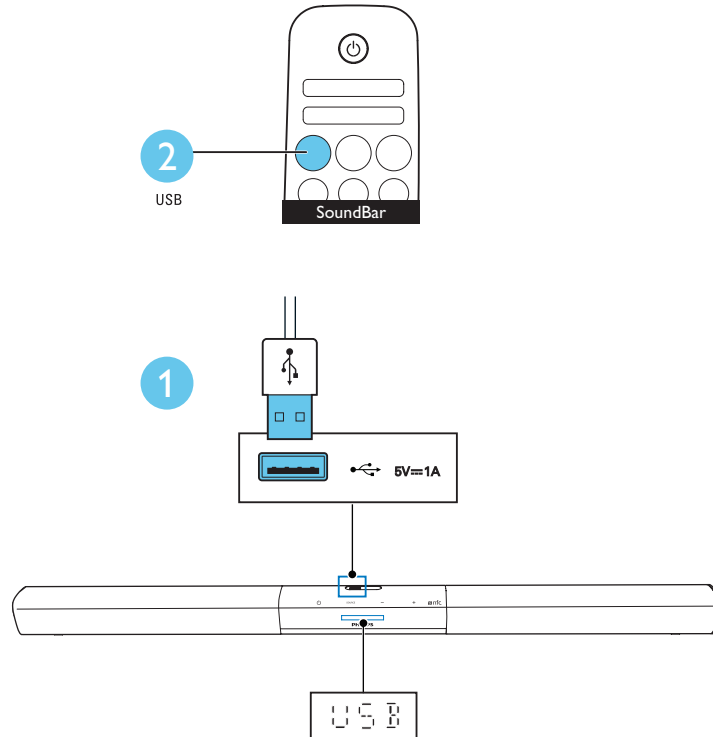


6

EN Play audio on a USB storage device

ES Reproduzca audio en un dispositivo de almacenamiento USB

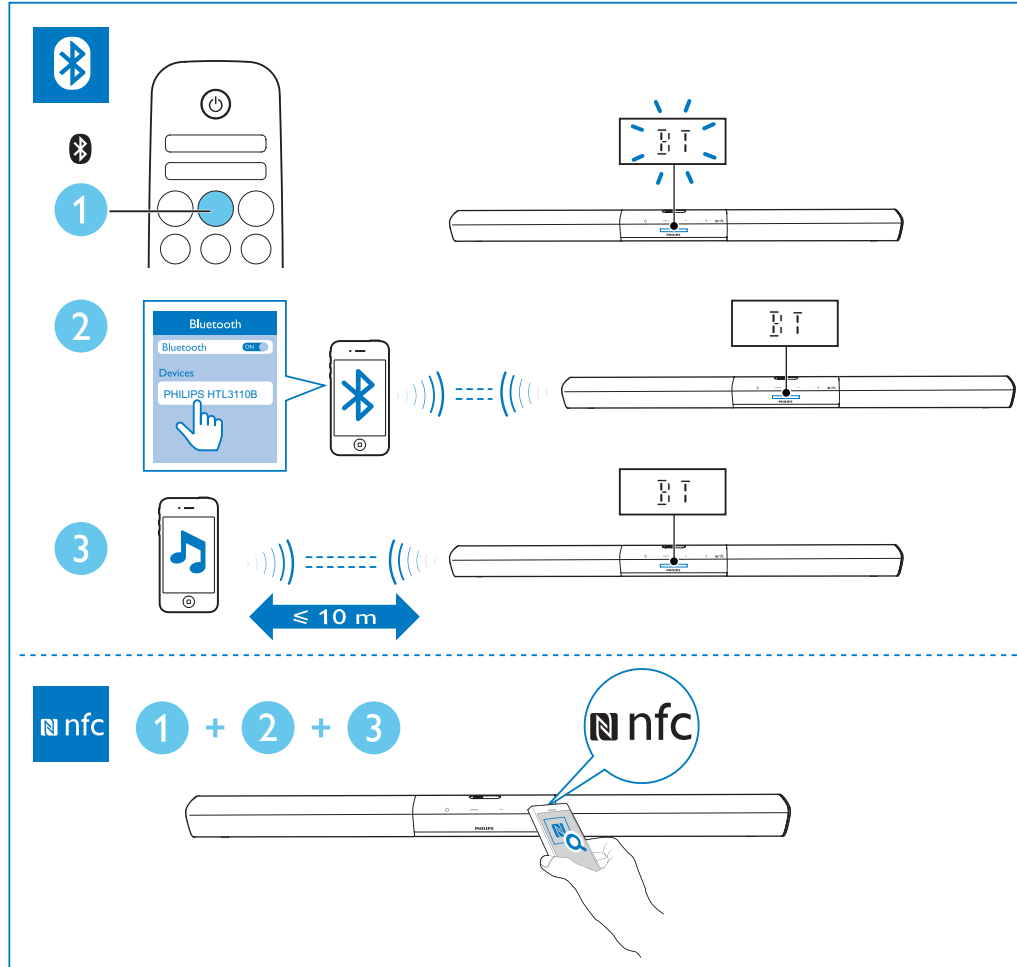
FR-CA Écoutez vos fichiers audio sur un dispositif de stockage USB

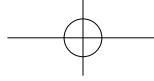




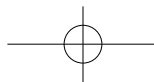
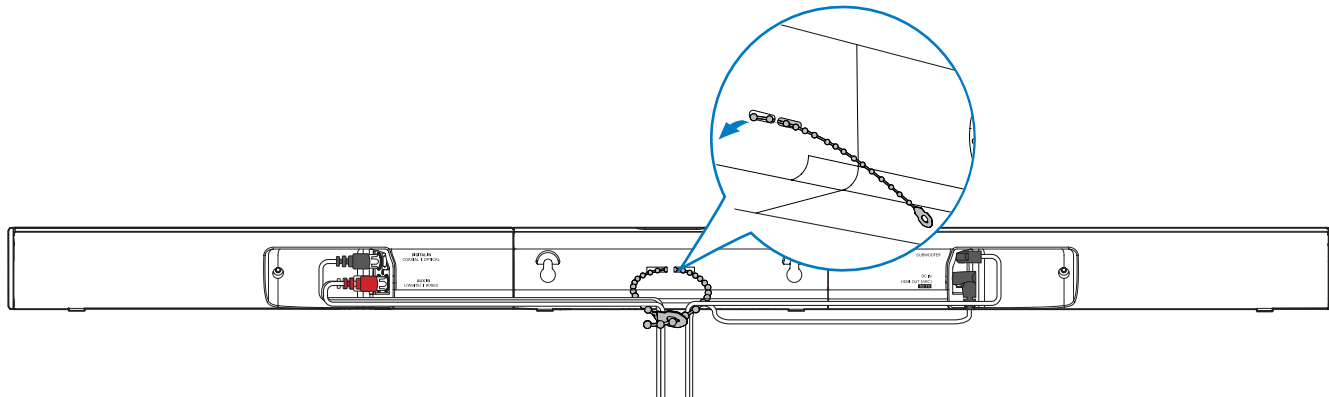
7

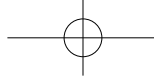
- EN** Play audio through Bluetooth or connect Bluetooth via NFC
- ES** Reproduzca audio a través de Bluetooth o conecte el Bluetooth mediante NFC
- FR-CA** Lisez du contenu audio par connexion Bluetooth ou raccordez un dispositif Bluetooth par NFC





EN Cable management
ES Administración de cables
FR-CA Gestion des câbles





- EN** For more information about using this product, visit www.philips.com/support
- ES** Para obtener más información sobre este producto, visite www.philips.com/support
- FR-CA** Pour en savoir plus sur l'utilisation de ce produit, visitez le site www.philips.com/support

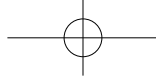


www.philips.com/support

For Product recycling information, please visit - www.recycle.philips.com

Para obtener información de productos de reciclaje, por favor visite - www.recycle.philips.com

Pour tout renseignement sur le recyclage des produits, veuillez visiter - www.recycle.philips.com



Manufactured under license from Dolby Laboratories. Dolby and the double-D symbol are trademarks of Dolby Laboratories.



The terms HDMI and HDMI High-Definition Multimedia Interface, and the HDMI Logo are trademarks or registered trademarks of HDMI Licensing LLC in the United States and other countries.



The Bluetooth® word mark and logos are registered trademarks owned by Bluetooth SIG, Inc. and any use of such marks by WOOX Innovations is under license. Other trademarks and trade names are those of their respective owners.

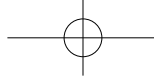


The N Mark is a trademark or registered trademark of NFC Forum, Inc. in the United States and in other countries.



© 2013 CSR plc and its group companies.

The aptX® mark and the aptX logo are trade marks of CSR plc or one of its group companies and may be registered in one or more jurisdictions.



P&F USA, Inc.
 PO Box 2248 Alpharetta, GA 30023-2248



Specifications are subject to change without notice
 2014 © WOOX Innovations Limited. All rights reserved.
 Philips and the Philips' Shield Emblem are registered trademarks of Koninklijke Philips N.V. and are
 used by WOOX Innovations Limited under license from Koninklijke Philips N.V.

HTL3110B_F7_QSG_V1.0

