

Quick Use Guide

FWD576



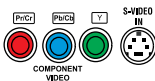
PHILIPS

Use this simple and quick way to watch your favourite DVD movie and enjoy your Home Cinema experience!



Helpful Hints

You only need to make one video connection to your TV in order to view the DVD playback.



If your TV has S-Video or Component (Pr PbY) video jacks, use one of these video connections instead for higher picture quality.



If your TV has only a single Antenna In jack, you will need an accessory RF modulator. The RF modulator converts the video from the DVD system so it can play through the TV's Antenna connector. Refer to your owner's manual for proper connection.

When listening to TV programs, press **AUX/GAME** button on the remote to set the DVD system to AUX mode in order for the sound to be heard.

DEMO MODE

To turn ON

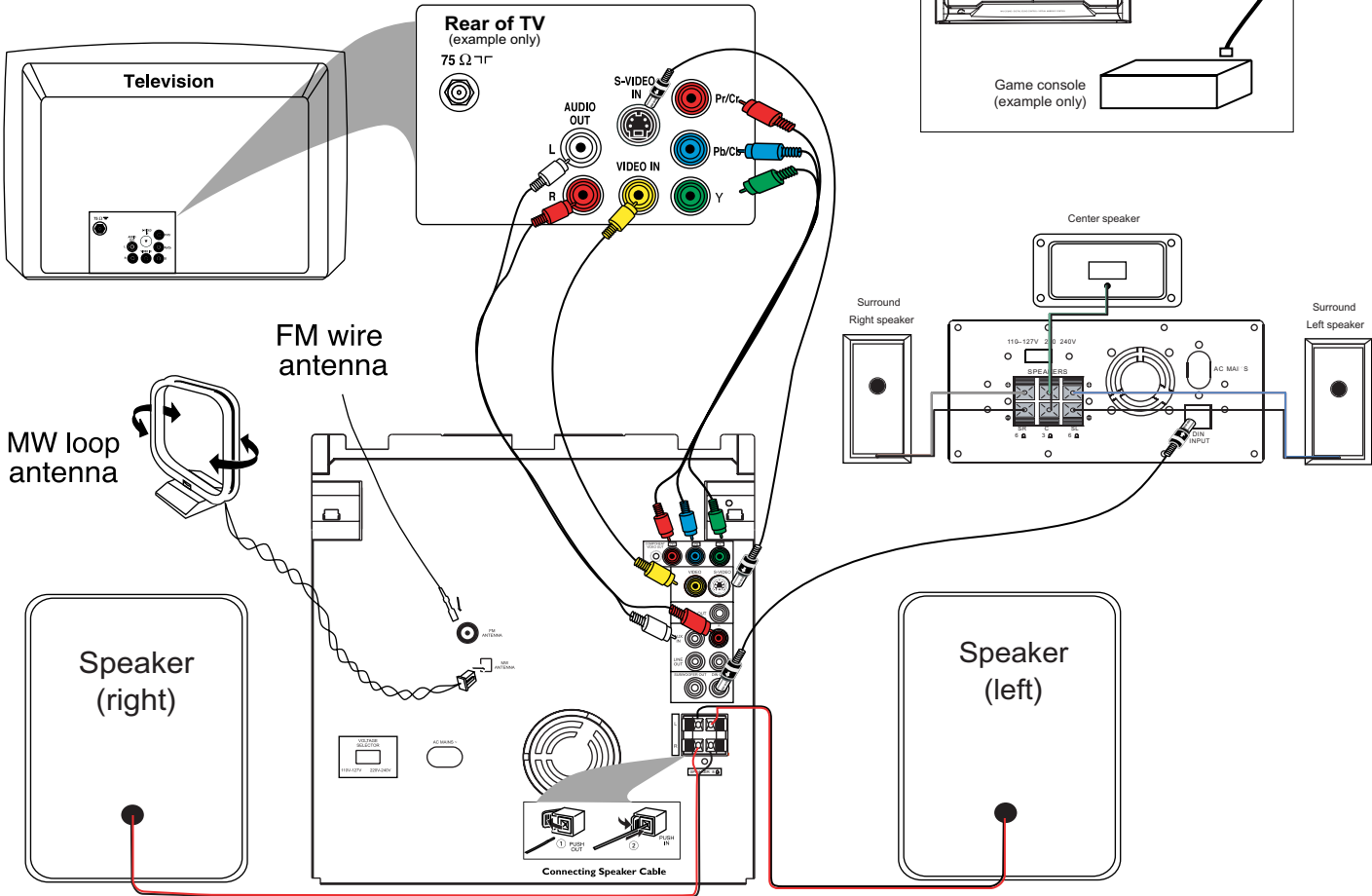
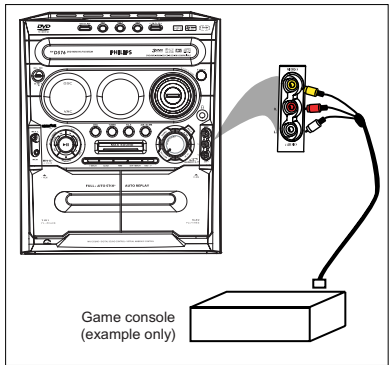


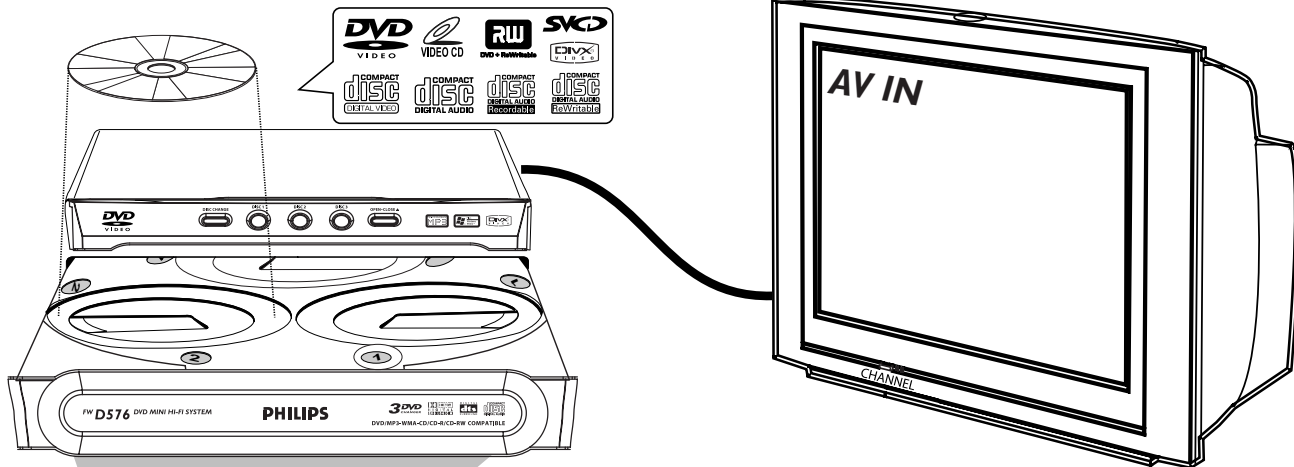
Press & HOLD button for 5 seconds

To turn OFF

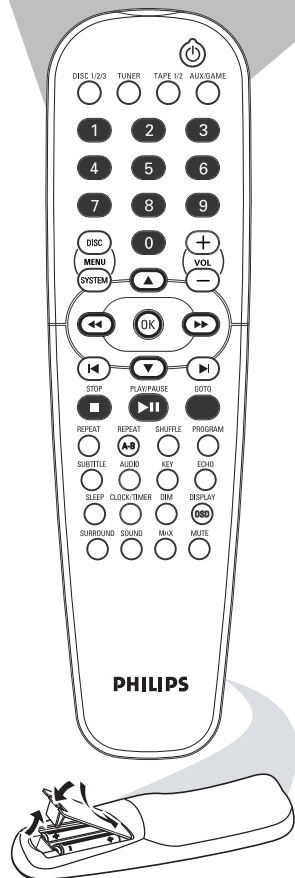


Press & HOLD button for 5 seconds





Make sure your DVD system and TV are connected and turned on!



Plug & Play

- 1 Turn on the system.**
"AUTO INSTALL -- PRESS PLAY" will be displayed.
- 2 Press PLAY on the system to start installation.**

Playing a disc

- 3 Press DISC1/2/3 on the remote control.**
You can also select the DISC (DISC1•2•3) on the front panel.
- 4 Turn on the TV and select the correct Video In mode.**
You should see the blue Philips DVD background screen on the TV (If no disc in the DVD system).
- 5 Press OPEN•CLOSE on the front of the DVD system and load discs, then press the corresponding OPEN•CLOSE again to close the disc tray.**
Make sure the disc label is facing up. For double-sided discs, load the side you want to play face down.
- 6 Playback will start automatically.**
If a disc menu appears, use / / / buttons on the remote to make the necessary selection, then press OK to confirm. Or, use the numeric keypad on the remote to select features. Follow the instructions given in the disc menu.
- 7 To stop playback, press STOP .**

Playing Game

- 8 Press AUX/GAME to select GAMEPORT mode.**
- 9 Turn on the TV and select the correct Video In mode.**
- 10 Press MIX-IT to mix the game sound to your desired music source.**
- 11 Start playing your favorite game.**

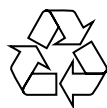
Region Codes

DVDs must be labeled for ALL regions or Region 4, in order to play on this DVD system.



You should find the below accessories in the packaging box.

<p>Audio cables (white, red)</p>	<p>component video cables (red, blue, green)</p>	<p>MW loop antenna</p>	<p>FM wire antenna</p>
<p>Composite video cable (yellow)</p>	<p>AA size batteries</p>	<p>DIN out cable</p>	<p>AC power cable</p>



Detailed playback features and additional functions are described in the accompanying owner's manual.