



Philips  
Design cordless phone

60 min answering machine  
2.0" display/ black backlight  
Speakerphone  
With answering machine



M8881W

## Redefining the home phone

Impeccable craftsmanship meets iconic style with the Philips M8 cordless phone. Advanced manufacturing transforms premium materials into a work of art, heralding a new class of designer home phone that is a pleasure to behold.

### Exquisite design with high quality execution

- Sophisticated design with genuine metal highlights
- Sensually curved handset for pure balance and comfort
- Calibrated, seamlessly integrated keys for precise dialing
- Charge handset either way around
- Smart, nicely designed cable management

### Ultimate calling experience

- High resolution 5.1cm (2") TFT color display
- Advanced sound testing and tuning for superb voice quality
- Handset speakerphone allows you to talk handsfree
- Up to 60 min. message on your answering machine
- Privacy settings: call barring, silence mode with filtering
- Talk up to 18 hours on a single charge

### Eco-conscious product

- Low radiation (ECO and ECO+ modes) and power consumption

**PHILIPS**

Design cordless phone  
60 min answering machine 2.0" display/ black backlight, Speakerphone, With answering machine

M8881W/90

## Highlights

### Eco-conscious model with ECO+



Philips phones are energy efficient and designed to be respectful to the environment. When ECO mode is activated the emitted radiation is reduced by up to 60%, and up to 95% when the phone is charging. With ECO+ mode activation the radiation drops to zero.

### Calibrated keypad



The calibrated keypad allows you to clearly feel every keystroke whenever you are dialing a number or entering a phonebook contact. Detailed study of keypad materials and structures, as well as extensive user tests result in the right balance between the key pressing force and the key response to ensure precise dialing.

### Comfortable handset

Sensually curved handset for pure balance and comfort

### Handset speakerphone



Handsfree mode uses a built-in loud speaker to amplify the voice of the caller, allowing you to speak and listen during a call without holding the phone to your ear. This is especially useful if you want to share the call with others or simply multitask.

### Hassle-free charging



For reliability and convenience the handset can be charged in both directions of the docking station.

### Natural materials



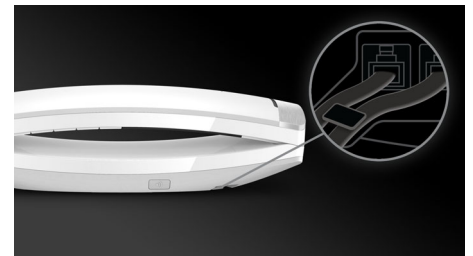
The design of the Philips M8 features genuine die-cast metal that has been immaculately crafted and brushed for a truly refined look and feel.

### Privacy settings



Value your privacy and quiet at home? Easily disable the ringtones for specific "no call" times to enjoy peace and silence. An additional filtering function allows any number chosen from the phone book to still ring when calling, making sure that only "right" people can reach you. Thanks to call barring you can avoid expensive phone bill surprises by blocking calls to specific numbers, to numbers starting with certain digits (for example pay per call numbers) or to specific area codes.

### Smart cable management



The smart cable management system cleverly hides the wires from sight. Intelligently designed concealed sockets and an internal cable guide ensure everything is clutter free and neatly tucked away.

### Up to 60 min. message



With up to 60 minutes recording time on your answering machine, you'll never miss an important message.

# Specifications

## Sound

- HQ-Sound
- Sound Profile: MySound
- Ringtones on handset: 10 HQ ringtones

## Picture/Display

- Display size: 5.1cm/2.0"
- Display type: TFT 16-bit color
- Backlight: Yes
- Backlight color: White

## Answering Machine

- Recording time capacity: Up to 60 minutes
- Pre-recorded OGM
- Answering machine control: Control from handset

## Convenience

- Menu structure in the handset: Icon Menu
- Speakerphone - talk handsfree
- Personalization: Silence mode and Night mode
- Call barring: Restrict the phone from making specific outgoing calls
- Signal strength indicator: 3-bar indicator
- Battery level indicator: 5-bar battery icon
- Intercom - multiple handsets
- Room monitoring
- Date / Time display
- Alarm Clock
- Battery charge indication
- Signal strength indication
- Programmable hot keys: Keys 1 to 9
- Call Management: Call Waiting\*, Caller ID\*, Microphone mute, Missed Calls, Received Calls
- Keypad lock
- Key tone on/off
- Auto hang up
- Multi base capability: 1
- Multi handset capability: Up to 4 handset
- Number of keys: 23
- Backlit keypad: White
- Enlarge dialing digit
- Up to 18 hrs talk time
- Up to 250 hrs standby time

- Charge time: 8 hours
- Line cord length: 1.8m
- Power cord length: 1.8m
- Range: Open field <300m; in door <50m
- Ease of Use: Full Duplex Handsfree

## Memory Capacity

- VIP Caller Identification
- Phonebook: 250 names and numbers
- Redial List Capacity: 20 entries
- Call log entries: 50 entries
- Phonebook store in the base

## Power

- Battery capacity: 550 mAh
- Battery type: AAA NiMH Rechargeable
- Mains power: AC 100-240V ~50/60Hz
- Power Consumption: <0.75W

## Security

- Transmission encryption : Yes

## Network Features

- Compatible: GAP
- Network service menu: Available only for operator version

## SAR Value

- Philips handsets: <0.1 W/kg

## Eco Design

- Eco+

## Packaging dimensions

- EAN: 87 12581 72200 5
- Packaging dimensions (W x H x D): 31.8 x 9.5 x 8 cm
- Gross weight: 0.578 kg
- Nett weight: 0.442 kg
- Number of products included: 1
- Packaging type: Carton
- Tare weight: 0.136 kg
- Type of shelf placement: Laying



Issue date 2015-02-06

Version: 3.1.2

12 NC: 8670 001 15132  
EAN: 08 71258 17220 05

© 2015 Koninklijke Philips N.V.  
All Rights reserved.

Specifications are subject to change without notice.  
Trademarks are the property of Koninklijke Philips N.V.  
or their respective owners.

[www.philips.com](http://www.philips.com)