

# Always there to help you

Register your product and get support at  
[www.philips.com/support](http://www.philips.com/support)



BTM2460



## User manual

# PHILIPS



# Contents

---

<b>1 Important</b>	<b>2</b>
Safety	2

---

<b>2 Your micro system</b>	<b>3</b>
Introduction	3
What's in the box	3
Overview of the main unit	4
Overview of the remote control	5

---

<b>3 Get started</b>	<b>7</b>
Place the speaker	7
Connect FM antenna	7
Connect power	7
Prepare the remote control	8
Set clock	8
Turn on	8

---

<b>4 Play</b>	<b>9</b>
Play from disc	9
Play from USB	9
Control play	9
Skip to a track	10
Program tracks	10
Play from Bluetooth-enabled devices	10

---

<b>5 Listen to the radio</b>	<b>12</b>
Tune to a radio station	12
Store FM radio stations automatically	12
Store FM radio stations manually	12
Select a preset radio station	12
Select stereo/mono broadcast	12

---

<b>6 Adjust sound</b>	<b>13</b>
Select a preset sound effect	13
Adjust volume level	13
Mute sound	13

---

<b>7 Other features</b>	<b>14</b>
Set the alarm timer	14
Set the sleep timer	14
Listen from an external device	14
Listen through a headphone	15

---

<b>8 Product information</b>	<b>16</b>
Specifications	16
USB playability information	17
Supported MP3 disc formats	17

---

<b>9 Troubleshooting</b>	<b>18</b>
--------------------------	-----------

---

<b>10 Notice</b>	<b>20</b>
------------------	-----------

# 1 Important

## Safety

- Make sure that there is enough free space around the product for ventilation.
- Only use attachments or accessories specified by the manufacturer.
- Battery usage CAUTION – To prevent battery leakage which may result in bodily injury, property damage, or damage to the product:
  - Install the battery correctly, + and - as marked on the product.
  - Remove the battery when the product is not used for a long time.
  - The battery shall not be exposed to excessive heat such as sunshine, fire or the like.
- The product shall not be exposed to dripping or splashing.
- Do not place any sources of danger on the product (e.g. liquid filled objects, lighted candles).
- Where the plug of the Direct Plug-in Adapter is used as the disconnect device, the disconnect device shall remain readily operable.



## Warning

- Never remove the casing of this device.
- Never lubricate any part of this device.
- Never place this device on other electrical equipment.
- Keep this device away from direct sunlight, naked flames or heat.
- Never look into the laser beam inside this device.
- Ensure that you always have easy access to the power cord, plug, or adaptor to disconnect this device from the power.

## Hearing safety



### Caution

- To avoid hearing damage, limit the time you use the headphones at high volume and set the volume to a safe level. The louder the volume, the shorter is the safe listening time.

### Be sure to observe the following guidelines when using your headphones.

- Listen at reasonable volumes for reasonable periods of time.
- Be careful not to adjust the volume as your hearing adapts.
- Do not turn up the volume so high that you can't hear what's around you.
- You should use caution or temporarily discontinue use in potentially hazardous situations.
- Excessive sound pressure from earphones and headphones can cause hearing loss.

## 2 Your micro system

Congratulations on your purchase, and welcome to Philips! To fully benefit from the support that Philips offers, register your product at [www.philips.com/welcome](http://www.philips.com/welcome).

---

### Introduction

With this unit, you can:

- enjoy audio from discs, Bluetooth-enabled devices, USB storage devices, or other external devices;
- listen to FM radio stations.

You can select one of the following sound effects:

- DSC 1 (Powerful), DSC 2 (Balanced), DSC 3 (Warm), DSC 4 (Bright), DSC 5 (Clear)

The unit supports these media formats:



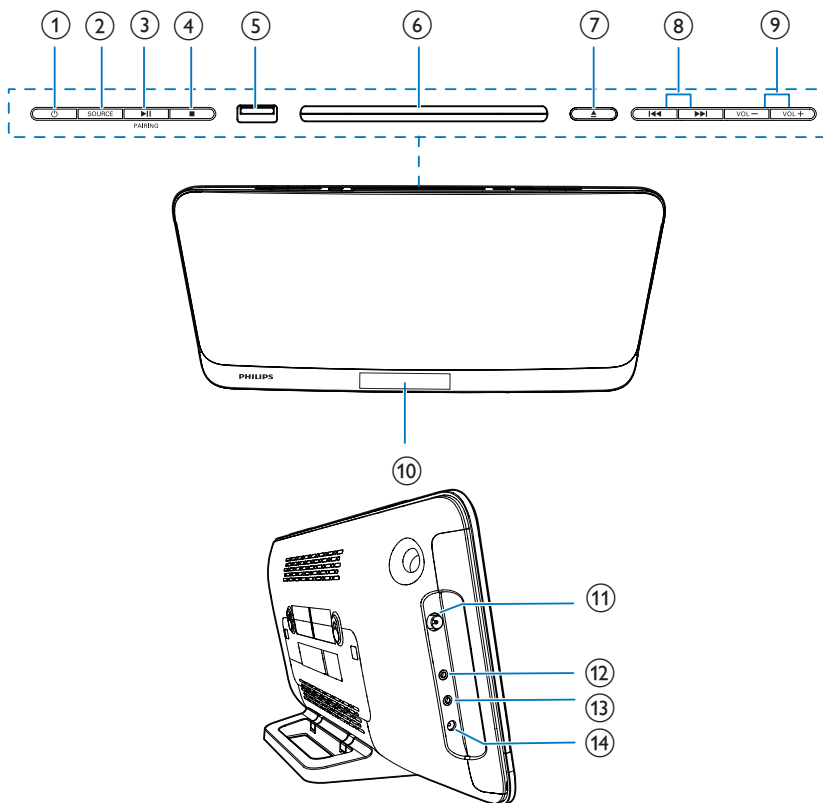
---





### What's in the box

Check and identify the contents of your package:

- Main unit
- 1 x FM wire antenna
- Remote control (with one AAA battery)
- Short User Manual
- Table stand
- Wall mounting sheet (with screws)

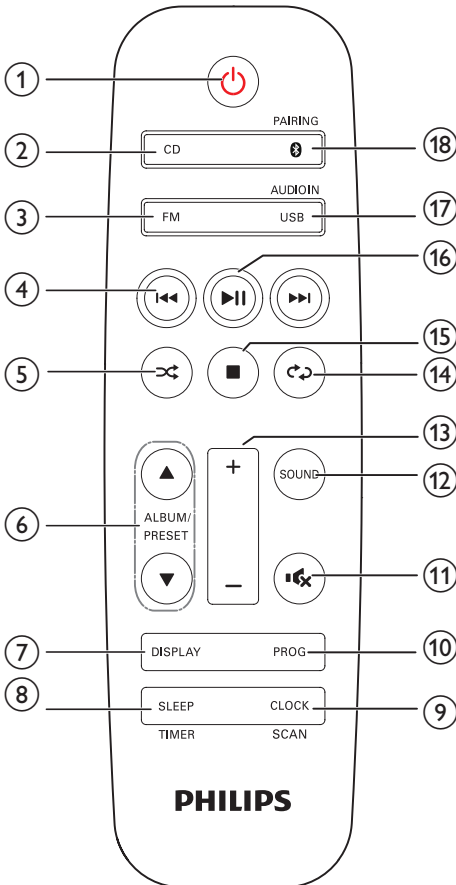
## Overview of the main unit



- |   |   |
|---|---|
| <p>① </p> <ul style="list-style-type: none"> <li>• Turn the unit on or off.</li> <li>• Switch to standby mode or Eco standby mode.</li> </ul> <p>② <b>SOURCE</b></p> <ul style="list-style-type: none"> <li>• Press to select a source: DISC, USB, TUNER, BT, AUDIO IN.</li> </ul> <p>③ <b>▶  /PAIRING</b></p> <ul style="list-style-type: none"> <li>• Start, pause, or resume play.</li> <li>• In Bluetooth mode, press and hold for 3 seconds to enter pairing mode.</li> </ul> <p>④ </p> <ul style="list-style-type: none"> <li>• Stop play or erase a program.</li> </ul> | <p>⑤ </p> <ul style="list-style-type: none"> <li>• USB socket.</li> </ul> <p>⑥ <b>Disc compartment</b></p> <p>⑦ </p> <ul style="list-style-type: none"> <li>• Open/close the disc compartment.</li> </ul> <p>⑧ <b>◀◀/▶▶</b></p> <ul style="list-style-type: none"> <li>• Skip to the previous/next track.</li> <li>• Search within a track/disc/USB.</li> <li>• Tune to a radio station.</li> <li>• Adjust time.</li> </ul> <p>⑨ <b>VOL+/VOL-</b></p> <ul style="list-style-type: none"> <li>• Adjust volume.</li> </ul> <p>⑩ <b>Display panel</b></p> |
|---|---|

- ⑪ **FM ANT**
  - FM antenna socket.
- ⑫ **Headphone**
  - Headphone socket.
- ⑬ **AUDIO IN**
  - Audio input socket(3.5mm) for an external audio device.
- ⑭ **DC IN 12V == 2.5A**
  - Power socket.

## Overview of the remote control



- ① **Power**
  - Turn the unit on or off.
  - Switch to standby mode or Eco power standby mode.
- ② **CD**
  - Select the DISC source.
- ③ **FM**
  - Press to select the FM source.
- ④ **Navigation**
  - Skip to the previous/next track.
  - Search within a track/disc/USB.
  - Tune to a radio station.
  - Adjust time.
- ⑤ **Shuffle**
  - Play tracks randomly.
- ⑥ **ALBUM/PRESET ▲ / ▼**
  - Select a preset radio station.
  - Skip to the previous/next album.
- ⑦ **DISPLAY**
  - Adjust display brightness.
  - During playback, display the play information.
- ⑧ **SLEEP/TIMER**
  - Set sleep timer.
  - Set alarm timer.
- ⑨ **CLOCK/SCAN**
  - Set the clock.
  - View clock information.
  - Scan FM radio stations.
- ⑩ **PROG**
  - Program tracks.
  - Program radio stations.
- ⑪ **Mute**
  - Mute or restore volume.
- ⑫ **SOUND**
  - Select a preset sound effect.
- ⑬ **+/-**
  - Adjust volume.
- ⑭ **Repeat**
  - Play a track or all tracks repeatedly.

15 ■

- Stop play or erase a program.

16 ►||

- Start, pause, or resume play.

17 **USB/AUDIO IN**

- Press repeatedly to select the USB or AUDIO IN source.

18 ⓘ **PAIRING**

- Press to select the BT (Bluetooth) source.
- In Bluetooth mode with one device connected, press and hold for 3 seconds to enter pairing mode.
- In Bluetooth mode with two devices connected, press and hold for 3 seconds to disconnect the first connected device or the device without music playback and enter pairing mode.



## 3 Get started



### Caution

- Use of controls or adjustments or performance of procedures other than herein may result in hazardous laser exposure or other unsafe operation.

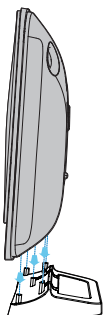
Always follow the instructions in this chapter in sequence.

If you contact Philips, you will be asked for the model and serial number of this apparatus. The model number and serial number are on the back of the apparatus. Write the numbers here:

Model No. \_\_\_\_\_

Serial No. \_\_\_\_\_

## Place the speaker

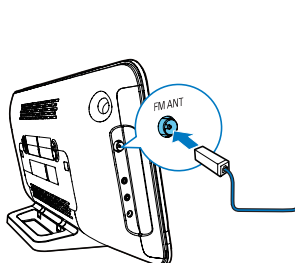


### Tip

- See the attached wall mounting sheet for how to mount the speaker onto wall.

## Connect FM antenna

- Connect the supplied antenna to this device before listening to the radio.

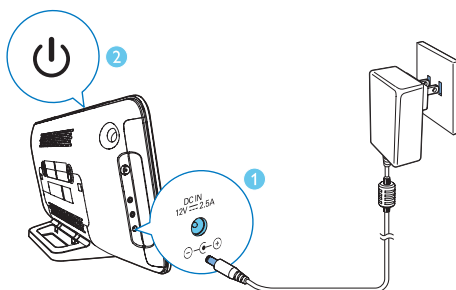


## Connect power



### Caution

- Risk of product damage! Make sure that the power supply voltage matches the voltage printed on the back of the main unit.
- Risk of electric shock! Before you plug the AC power adaptor, make sure that the adaptor plug converter is fixed securely. When you unplug the AC power adaptor, always pull the plug, never the cord.
- Before you connect the AC power adaptor, make sure that you have completed all the other connections.



## Prepare the remote control

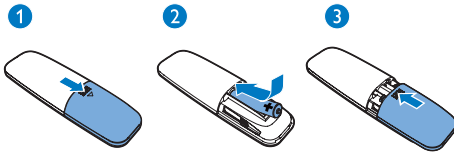


### Caution

- Risk of product damage! When the remote control is not used for long periods, remove the battery.

To insert the remote control battery:

- 1 Open the battery compartment.
- 2 Insert the supplied AAA battery with correct polarity (+/-) as indicated.
- 3 Close the battery compartment.



## Set clock

- 1 In standby mode, press and hold **CLOCK** on the remote control for 3 seconds.  
↳ The [24H] or [12H] hour format is displayed.
- 2 Press **◀▶** to select the [24H] or [12H] hour format.
- 3 Press **CLOCK** to confirm.  
↳ The hour digits are displayed and begin to blink.
- 4 Press **◀▶** to select hour and press **CLOCK** to confirm.  
↳ The minute digits are displayed and begin to blink.
- 5 Press **◀▶** to select minute and press **CLOCK** to confirm.



### Note

- If no button is pressed in 10 seconds, the system exits clock setting mode automatically.



### Tip

- You can press **CLOCK** to view clock information in power-on mode.

## Turn on

- Press **⏻**.  
↳ The unit switches to the last selected source.

## Switch to standby mode

- Press **⏻** again to switch the unit to standby mode.  
↳ The clock (if set) is displayed on the panel.

### Switch to ECO standby mode:

- Press and hold **⏻** for more than 3 seconds.  
↳ The display panel is dimmed.



### Note

- The unit switches to Eco Power Standby mode after 15 minutes in standby mode.

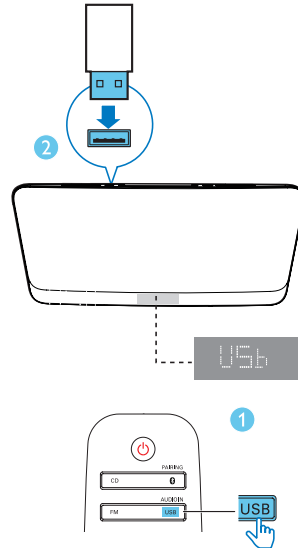
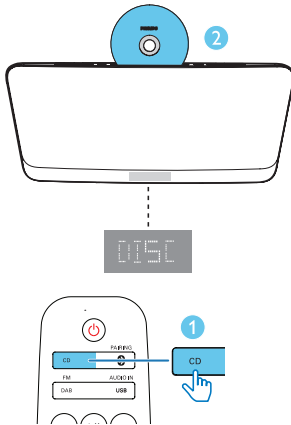
# 4 Play

## Play from disc

### Note

- Make sure that the disc contains playable audio content.

- 1 Press **CD** to select the **DISC** source.
- 2 Insert a disc into the disc compartment with the printed side facing you.  
↳ Play starts automatically. If not, press **▶II**.



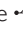
## Control play

▲ / ▼	Select a folder.
◀◀ / ▶▶	Press to skip to the previous or next track. Press and hold to search backward/forward within a track.
▶II	Pause or resume play.
■	Stop play.
↺↻	Play a track or all tracks repeatedly.
↻↺	Play tracks randomly (Not applicable for the programmed tracks).

## Play from USB

### Note

- Make sure that the USB device contains playable audio content (see 'Product information' on page 16).

- 1 Press **USB/AUDIO IN** repeatedly to select the **USB** source.
- 2 Insert a USB device into the  socket.  
↳ Play starts automatically. If not, press **▶II**.

## Skip to a track

For CD:

Press ◀◀ / ▶▶ to select another track.

For MP3 disc and USB:

- 1 Press **ALBUM/PRESET ▲ / ▼** to select an album or a folder.
- 2 Press ◀◀ / ▶▶ to select a track or a file.

## Program tracks

You can program a maximum of 20 tracks.

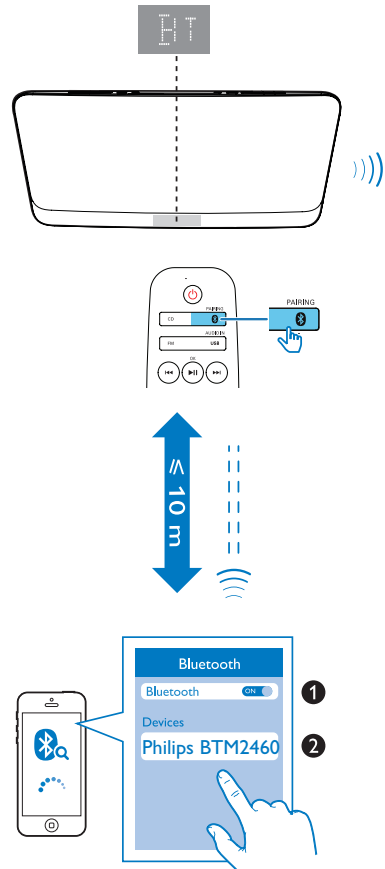
- 1 Stop play, and then press **PROG/SCAN** to activate programming mode.
- 2 For MP3 tracks, press **ALBUM/PRESET ▲ / ▼** to select an album.
- 3 Press ◀◀ / ▶▶ to select a track, and then press **PROG/SCAN** to confirm.
- 4 Repeat steps 2-3 to program more tracks.
- 5 Press ▶▶ to play the programmed tracks.
  - To erase the program, stop play, and then press ■.

## Play from Bluetooth-enabled devices

### Note

- Before pairing a device with this unit, read its user manual for Bluetooth compatibility.
- Compatibility with all Bluetooth devices is not guaranteed.
- Any obstacle between the unit and the device can reduce the operational range.
- The effective operation range between this unit and your Bluetooth enabled device is approximately 10 meters (30 feet).
- The unit can memorize up to 8 previously connected Bluetooth devices.

To enjoy music through the speaker wirelessly, you need to pair your Bluetooth enabled device with the unit.



- 1 Press **0 /PAIRING** to select the **Bluetooth** source.
  - ↳ **[BT]** (Bluetooth) is displayed.
  - ↳ The Bluetooth indicator flashes blue.
- 2 On your device that supports Advanced Audio Distribution Profile (A2DP), enable Bluetooth and search for Bluetooth devices that can be paired (refer to the user manual of the device).
- 3 Select '**Philips BTM2460**' on your Bluetooth enabled device and if necessary input '0000' as the pairing password.
  - ↳ After successful pairing and connection, the Bluetooth indicator turns solid blue, and the unit beeps.
  - ↳ 'BT' is displayed.

- 4 Play music on the connected device.
- ↳ Music streams from your Bluetooth enabled device to this unit.
  - If you fail to search for 'Philips BTM2460' or cannot pair with this unit, press and hold **0 /PAIRING** for three seconds until you hear a beep sound to enter pairing mode.

**To disconnect the current Bluetooth-enabled device:**

- Deactivate Bluetooth on your device.

---

## Pair and connect a second device

You can pair and connect a maximum of two Bluetooth-enabled devices to this product at the same time.

**To connect and play from a second Bluetooth-enabled device**

- Press and hold **0 /PAIRING** for 3 seconds to enter pairing mode.
  - ↳ The Bluetooth indicator flashes blue quickly.
  - ↳ The product beeps once.
- To play from the other connected device, stop music streaming from the current device, and then play music from the other device.

**To connect and play from the third Bluetooth-enabled device.**

- Press and hold **0 /PAIRING** for 3 seconds to enter pairing mode.
  - ↳ The first connected device or the device with no music playback is disconnected.
  - ↳ The product beeps once.

# 5 Listen to the radio

## Tip

- Position the antenna as far as possible from TV or other radiation sources.
- Make sure that you have connected the supplied FM antenna.
- For optimal reception, fully extend and adjust the position of the antenna.

## Tune to a radio station

- 1 Press **FM** to select the tuner source.
- 2 Press and hold **◀◀** / **▶▶** for 3 seconds.  
↳ The radio tunes to a station with strong reception automatically.
- 3 Repeat step 2 to tune to more stations.

### To tune to a weak station:

- Press **◀◀** / **▶▶** repeatedly until you find optimal reception.

## Store FM radio stations automatically

### Note

- You can store a maximum of 30 preset radio stations (FM).

- 1 In tuner mode, press **CLOCK/SCAN** for more than two seconds to activate automatic programming.  
↳ **[AUTO]** is displayed.  
↳ All available stations are programmed in the order of waveband reception strength.  
↳ The first programmed radio station is broadcast automatically.
- 2 press **▲** / **▼** to select a preset station.

## Store FM radio stations manually

- 1 Tune to an FM radio station.
- 2 Press **PROG** to activate programming mode.  
↳ **[PROG]** (program) blinks.
- 3 Press **ALBUM/PRESET ▲** / **▼** repeatedly to select a radio frequency.
- 4 Press **PROG** again to confirm.  
↳ The frequency of the preset station is displayed.
- 5 Repeat the above steps to store more FM stations.

### Note

- To remove a pre-stored station, store another station in its place.

## Select a preset radio station

- In FM mode, press **▲** / **▼** to select a preset radio station.

## Select stereo/mono broadcast

### Note

- Stereo broadcast is the default setting for tuner mode.
  - For stations with weak signals: to improve the reception, change to monaural sound.
- 
- In FM tuner mode, press **▶||** to switch between mono and stereo broadcast.  
↳ **[STEREO]** (Stereo) is displayed when the radio station is stereo broadcast.

## 6 Adjust sound

The following operations are applicable to all supported media.

---

### Select a preset sound effect

- Press **SOUND** repeatedly to select a preset sound effect.
  - **DSC 1** (Powerful), **DSC 2** (Balanced), **DSC 3** (Warm), **DSC 4** (Bright), **DSC 5** (Clear).

---

### Adjust volume level

- On the remote control, press **+/-** repeatedly.
- On the main unit, press **VOL+/VOL-** repeatedly.

---

### Mute sound

- Press  to mute or restore the sound.

## 7 Other features

### Set the alarm timer

This unit can be used as an alarm clock. You can select **DISC**, **USB**, or **TUNER** as the alarm source.

#### Note

- Make sure that you have set the clock correctly.

- 1 In standby mode, press and hold **SLEEP/TIMER** for three seconds.
- 2 Press **◀▶** repeatedly to select an alarm source (**DISC**, **USB**, or **TUNER**)
- 3 Press **SLEEP/TIMER** to confirm.  
↳ The hour digits begin to blink.
- 4 Repeat steps 2-3 to set the hour, minute, and adjust volume of the alarm.

#### Note

- If no button is pressed in 90 seconds, the system exits timer setting mode automatically.

#### To activate or deactivate the alarm timer:

- Press **SLEEP/TIMER** repeatedly to view the alarm information and activate or deactivate the alarm.  
↳ If the timer is activated, **[TIMER]** (Timer) is displayed.  
↳ If the timer is deactivated, **[TIMER OFF]** (timer off) is displayed and **[TIMER]** (Timer) disappears.

#### Tip

- If the **DISC/USB** source is selected, but no disc is placed or no **USB** connected, the system switches to the tuner source automatically.

### Set the sleep timer

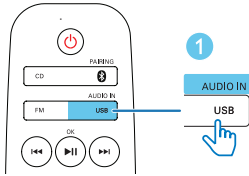
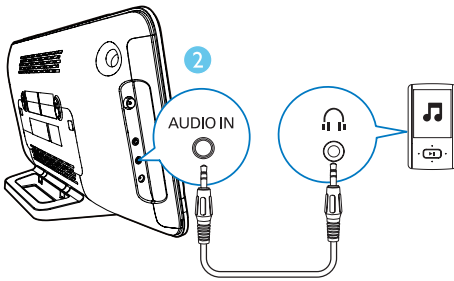
- To set the sleep timer, when the unit is switched on, press **SLEEP/TIMER** repeatedly to select a set period of time (in minutes).
  - **[SLP 120]**
  - **[SLP 90]**
  - **[SLP 60]**
  - **[SLP 45]**
  - **[SLP 30]**
  - **[SLP 15]**
  - **[SLP OFF]**
- ↳ When the sleep timer is activated, **[SLEEP]** (sleep) is displayed. Otherwise, **[SLEEP]** (sleep) disappears.

### Listen from an external device


You can listen to an external device through this unit with an audio cable.

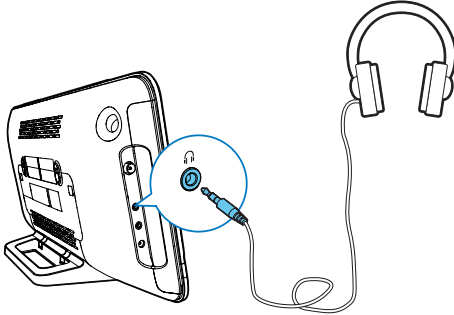
- 1 Press **USB/AUDIO IN** repeatedly to select the **AUDIO IN** source.
- 2 Connect an audio cable (not supplied) between:
  - the **AUDIO IN** socket (3.5 mm) on the unit;
  - and the headphone socket on an external device.
- 3 Start to play music on the connected device (see the device user manual).





## Listen through a headphone

- Plug a headphone (not supplied) into the  socket.



# 8 Product information

## Note

- Product information is subject to change without prior notice.

## Specifications

### Amplifier

Rated Output Power	2 x 10 W
Frequency Response	63 -20KHz, +/-3dB
Total Harmonic Distortion	<1%(1 KHz)
Signal to Noise Ratio (A-weighted)	>72dBA
AUDIO IN	650mV RMS 22kohm

### Disc

Laser Type	Semiconductor
Disc Diameter	12 cm
Support Disc	CD-DA, CD-R, CD-RW, MP3-CD
Audio DAC	24 Bits/44.1 kHz
Total Harmonic Distortion	<1% (1 kHz)
Frequency Response	63Hz - 20kHz, $\pm 3$ dB
S/N Ratio	>72dBA

### Bluetooth

Bluetooth version	V3.0 +EDR
Bluetooth frequency band	2.4GHz ~ 2.48GHz ISM Band
Range	10 m (free space)

## USB

USB Direct Version	2.0 full speed
--------------------	----------------

## Tuner (FM)

Tuning Range	87.5-108 MHz
Tuning grid	50 KHz
Preset stations	30
Sensitivity	
- Mono, 26 dB S/N Ratio	<22 dBf
- Stereo, 46 dB S/N Ratio	<51.5 dBf
Search Selectivity	<28dBf
Total Harmonic Distortion	<3%
Signal to Noise Ratio	>55dBA

## General information

AC power	Model: AS360-120-AA250 Input: 100-240V~, 50/60 Hz, 1.2A Output: DC 12.0V, 2.5A
Operation Power Consumption	15W
Eco Standby Power Consumption	<0.5W
Dimensions	
- Main Unit (W x H x D)	465 x 233 x 107 mm
- D-Box	520 x 323 x 123 mm
Weight	
- Main Unit	2.4 kg
- With Packing	3.6 kg

---

## USB playability information

### Compatible USB devices:

- USB flash memory (USB2.0 or USB1.1)
- USB flash players (USB2.0 or USB1.1)
- memory cards (requires an additional card reader to work with this unit)

### Supported USB formats:

- USB or memory file format: FAT12, FAT16, FAT32 (sector size: 512 bytes)
- MP3 bit rate (data rate): 32-320 Kbps and variable bit rate
- Directory nesting up to a maximum of 8 levels
- Number of albums/ folders: maximum 99
- Number of tracks/titles: maximum 999
- File name in Unicode UTF8 (maximum length: 32 bytes)

### Unsupported USB formats:

- Empty albums: an empty album is an album that does not contain MP3 files, and will not be shown in the display.
- Unsupported file formats are skipped. For example, word documents (.doc) or MP3 files with extension .dlf are ignored and not played.

---

## Supported MP3 disc formats

- ISO9660, Joliet
- Maximum title number: 128 (depending on file name length)
- Maximum album number: 99
- Supported sampling frequencies: 32 kHz, 44.1 kHz, 48 kHz
- Supported Bit-rates: 32~256 (kbps), variable bit rates

# 9 Troubleshooting



## Warning

- Never remove the casing of this unit.

To keep the warranty valid, never try to repair the unit yourself.

If you encounter problems when using this device, check the following points before requesting service. If the problem remains unsolved, go to the Philips Web page ([www.philips.com/support](http://www.philips.com/support)). When you contact Philips, make sure that the device is nearby and the model number and serial number are available.

### No power

- Make sure that the AC power cord of the device is connected properly.
- Make sure that there is power at the AC outlet.
- As a power-saving feature, the system switches off automatically 15 minutes after track play reaches the end and no control is operated.

### No sound or poor sound

- Adjust the volume.

### No response from the unit

- Disconnect and reconnect the AC power plug, then turn on the unit again.

### Remote control does not work

- Before you press any function button, first select the correct source with the remote control instead of the main unit.
- Reduce the distance between the remote control and the unit.
- Insert the battery with its polarities (+/- signs) aligned as indicated.
- Replace the battery.
- Aim the remote control directly at the sensor on the front of the unit.

### No disc detected

- Insert a disc.
- Make sure that the disc is inserted with the printed side facing you.
- Wait until the moisture condensation at the lens has cleared.
- Replace or clean the disc.
- Use a finalized CD or correct format disc.

### Cannot display some files in USB device

- The number of folders or files in the USB device has exceeded a certain limit. This phenomenon is not a malfunction.
- The formats of these files are not supported.

### USB device not supported

- The USB device is incompatible with the unit. Try another one.

### Poor radio reception

- Increase the distance between the unit and your TV or other radiation sources.
- Connect and fully extend the supplied antenna.

### Music playback is unavailable on this unit even after successful Bluetooth connection.

- The device cannot be used to play music through this unit wirelessly.

### The audio quality is poor after connection with a Bluetooth-enabled device.

- The Bluetooth reception is poor. Move the device closer to this unit or remove any obstacle between them.

### Bluetooth cannot be connected with this unit.

- The device does not support the profiles required for this unit.
- The Bluetooth function of the device is not enabled. Refer to the user manual of the device to find out how to enable the function.
- This unit is not in pairing mode.
- The unit has connected to two Bluetooth-enabled devices. Disconnect one of those two devices and try again.

**The paired mobile device connects and disconnects constantly.**

- The Bluetooth reception is poor. Move the device closer to this unit or remove any obstacle between them.
- Some mobile phones may connect and disconnect constantly when you make or end calls. This does not indicate any malfunction of this unit.
- For some devices, the Bluetooth connection may be deactivated automatically as a power-saving feature. This does not indicate any malfunction of this unit.

**Timer does not work**

- Set the clock correctly.
- Switch on the timer.

**Clock/timer setting erased**

- Power has been interrupted or the power cord has been disconnected. Reset the clock/timer.

# 10 Notice

Any changes or modifications made to this device that are not expressly approved by Gibson Innovations may void the user's authority to operate the equipment.

## Disposal of your old product



Your product is designed and manufactured with high quality materials and components, which can be recycled and reused. Do not throw away the product with the normal household waste at the end of its life, but hand it in at an official collection point or recycling. By doing this, you help to preserve the environment.

## Environmental information

All unnecessary packaging has been omitted. We have tried to make the packaging easy to separate into three materials: cardboard (box), polystyrene foam (buffer) and polyethylene (bags, protective foam sheet.) Your system consists of materials which can be recycled and reused if disassembled by a specialized company. Please observe the local regulations regarding the disposal of packaging materials, exhausted batteries and old equipment.



**Be responsible**  
**Respect copyrights**

This item incorporates copy protection technology that is protected by U.S. patents and other intellectual property rights of Rovi Corporation. Reverse engineering and disassembly are prohibited.




The Bluetooth® word mark and logos are registered trademarks owned by Bluetooth

SIG, Inc. and any use of such marks by Gibson Innovations Limited is under license. Gibson® is a registered trade mark of Gibson Brands Inc. Other trademarks and trade names are those of their respective owners.

**This apparatus includes this label:**





Note

- The type plate is located on the back of the device.





This product has been manufactured by, and is sold under the responsibility of Gibson Innovations Ltd., and Gibson Innovations Ltd. is the warrantor in relation to this product.  
Philips and the Philips Shield Emblem are registered trademarks of Koninklijke Philips N.V. and are used under license.

BTM2460\_96\_UM\_V3.0

