

SPC315NC

User manual



PHILIPS

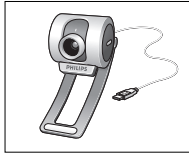
Need help?

Online help: <http://www.philips.com/support>

For interactive help, downloads and frequently asked questions.

What's in the box?

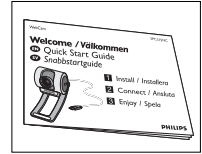
Please check that the following items are packed in the Philips SPC315NC box. They are provided to help you set up and use your Philips SPC315NC.



*Philips SPC315NC
WebCam*



*Installation CD-ROM
including manual*

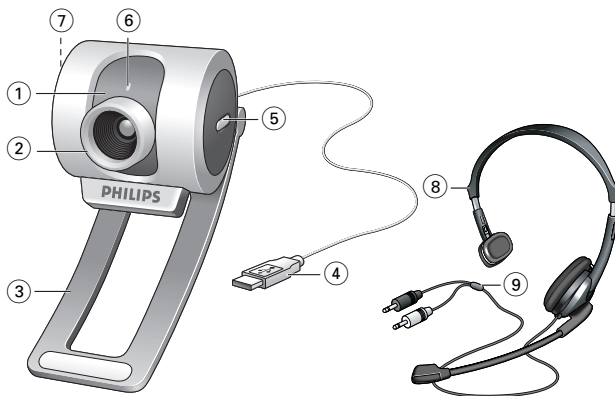


*Quick Installation
Guide*



*Headset with headphone
and microphone*

Legend of functions



1 Rotating lens

For manually changing the vertical angle of the WebCam.

2 Focus ring

For adjusting the focus of the image manually.

3 Clamp with rubber rims

For attaching the WebCam to your monitor or laptop screen.

4 USB connector

For connecting the WebCam to the USB port of the laptop or desktop PC.

The WebCam will derive its power from the laptop or desktop PC when a USB connection is made.

5 Snapshot button

Enables you to take photos without using your mouse.

6 Power LED

Lights up blue when the WebCam is in use.

7 Quicklaunch button

For quick and easy start-up of the V-Lounge software.

8 Headset with headphone and microphone

For talking and listening to your meeting partner during video chatting.

9 Audio cable

Black headphone plug (🎧) - for connecting to the microphone socket of the pc sound card.

Grey microphone plug (!) - for connecting to the headphone or green socket of the pc sound card.

2 Need help?

3 What's in the box?

4 Legend of functions

5 Contents

6 Welcome

7 Things you should know

7 Safety precautions

7 Copyright

8 Installation

8 Installing the WebCam software

10 Connecting the WebCam to your PC / laptop

11 WebCam settings

11 General controls

12 Picture controls

14 Audio controls

15 Using the applications

15 VLounge

16 Skype

16 MSN Messenger

17 Yahoo! Messenger

17 AOL Instant Messenger

17 Making snapshots using Windows® XP

18 Technical specifications

19 Important information

19 Disclaimer

19 FCC compliance

20 Environmental information

20 System requirements

20 Disclaimer of warranty

20 Limitations of damages

Welcome

The Philips SPC315NC WebCam you have just purchased is manufactured to the highest standards and will give you years of trouble-free use. Brilliant images and blazing colours, that's what you get with the SPC315NC WebCam. Forget about installing interface cards and separate power supplies, because you don't need them any more. Power is supplied direct to the webcam through the USB cable and the webcam returns audio and video straight to your PC!

After installation, the new WebCam can be used for all sorts of applications, such as:

- **Video conferencing:** use the Philips SPC315NC Webcam for video chatting and conferencing (the Philips SPC315NC WebCam works with Skype, MSN Messenger, Yahoo! Messenger and AOL Messenger);
- **Video e-mail / Video capture:** create your own video presentations, video mail, product demonstrations, training videos, Internet clips etc.;
- **Snapshot images:** use images in presentations, create postcards, or send them via e-mail or on diskette. The WebCam works with all applications that use the TWAIN interface to acquire an image.
- **Editing and special effects:** after recording the images you want with the Philips SPC315NC WebCam, the images can be easily edited using image or video editing programs.

The following sections in this manual give a step-by-step description of the installation process and explain how to use the Philips SPC315NC WebCam.

Please read the following instructions carefully, and retain them for future reference. It may be helpful to have the instructions for use for the PC at hand for reference.

Safety precautions

Observe the following guidelines to ensure that the WebCam will operate safely and to prevent defects.

- Do not use your camera in environments outside the following range: temperature: 0°C to 40°C, relative humidity: 45% ~ 85%.
- Do not use or store your camera in/under:
 - direct sunlight exposure;
 - very humid and dusty environment;
 - near any kind of heat sources.
- If your WebCam gets wet, dry it with soft cloth as soon as possible.
- If the lens is dirty, Do NOT touch the lens with your fingers.
- Clean the outside of the WebCam with a soft cloth.
- Do NOT use cleaning fluids based on alcohol, methylated spirit, ammonia, etc.
- Do NOT attempt to disassemble or repair your WebCam by yourself. Do not open the WebCam. In the event of technical difficulties return it to your Philips retailer.
- Do NOT use your WebCam in the water.
- Protect the WebCam from oil, vapour, steam, moisture, and dust.
- Never point the WebCam lens at the sun.

Copyright

Copyright© 2003 by Philips Consumer Electronics B.V. All rights reserved. No part of this publication may be reproduced, transmitted, transcribed, stored in a retrieval system or translated into any language or computer language, in any form or by any means, electronic, mechanical, magnetic, optical, chemical, manual or otherwise, without prior written permission from Philips. Brands and product names are trademarks or registered trademarks of their respective companies.

Installation

Installing the WebCam software

The software supplied only works on PCs with the operating systems Microsoft® Windows® 98SE, ME, 2000 and XP.

Notes!

- Unplug all your USB devices (except USB keyboard and USB mouse) before you start.
- Do not plug in your WebCam yet. Run the Installation CD-ROM first.
- Have your Windows® CD-ROM at hand.
- The SPC315NC WebCam is 'XP Plug & Play'. This means if you are running Windows XP and you have installed Service Pack 2 and the latest Microsoft Windows XP updates you don't need to install the SPC315NC WebCam driver. Simply plug in the camera and you can start using your SPC315NC WebCam.



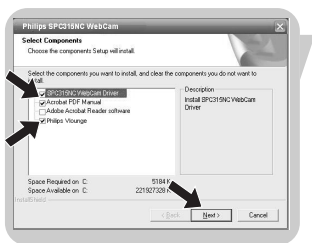
- 1** Place the installation CD-ROM in your PC's / laptop's CD-ROM / DVD drive.



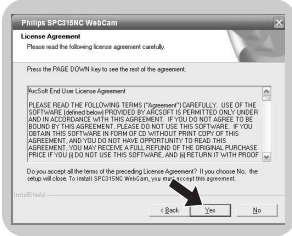
> After a couple of seconds the the 'Language selection' screen appears automatically.

Note!

If the 'Language selection' screen does not appear automatically, open the Microsoft® Windows® Explorer and double click on the 'Set-up.exe' icon in the CD-ROM directory.



- 2** Select your language and click on the '**OK**' button.
> The following screen appears.
- 3** Select at least the 'SPC315NC PC WebCam Driver' and 'Philips VLounge' and click on the '**Next**' button.

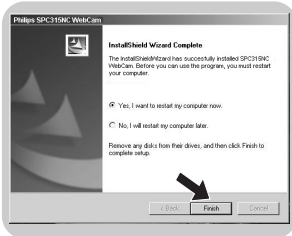


> The following software license agreement appears.

4 Click on 'Yes' to continue the installation.




> The following screen, including a progress bar, appears.



> The following screen appears when the installation was successful.

5 Click on 'Finish'.

6 Restart your PC / laptop when you have finished installing the software.

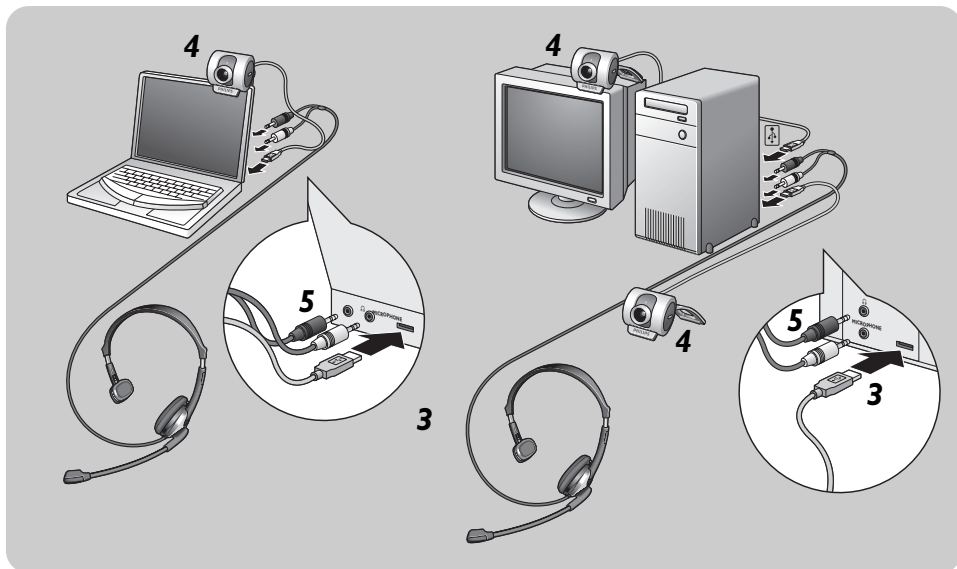
> The V(ideo)-Lounge desktop shortcut  will be installed after installation.

> Via VLounge you have access to all camera-related software. See 'Using the applications'.


7 You can now connect your WebCam.

Installation

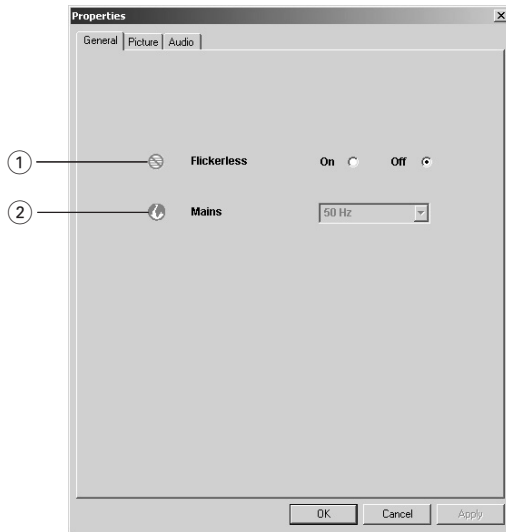
Connecting the WebCam to your PC / laptop



- 1** Be sure to run the installation CD first, before connecting the WebCam to the PC / laptop.
- 2** Turn on the PC / laptop.
- 3** Connect the USB connector of the USB cable to the USB port of the PC / laptop.
 > The WebCam will now derive its power from the PC / laptop.
- 4** Use the clamp and the two rubber rims to attach the WebCam to your PC monitor or laptop screen or fold out the clamp and place the camera on your desk.
- 5** Connect the headset audio cable to the sound card of your PC / laptop.
 - Connect the black headphone plug (🎧) to the headphone socket of the PC sound card.
 - Connect the grey microphone plug (!) to the microphone or green socket of the sound card.

The Philips SPC315NC video property can be changed from within an application, or independently by clicking the VProperty icon  which can be found in the Windows taskbar bottom right of your screen. Most applications can show a 'live preview' video image on your monitor. Always use this option to see the effect of changed settings on your screen.

General controls



① Flickerless

The Flickerless option should only be used under flickering light conditions (e.g. fluorescent or neon lamps) to prevent flickering or strangely coloured video images.

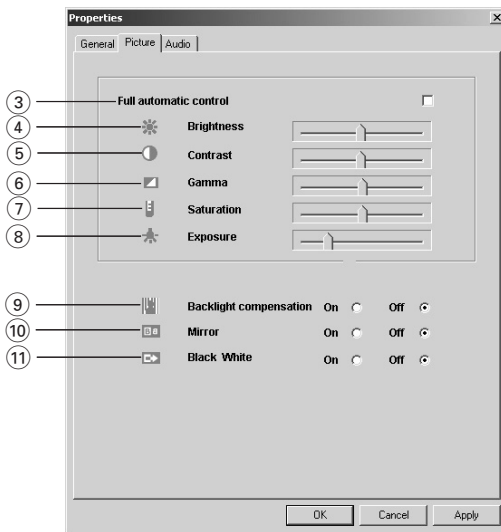
If this option is used under normal lighting conditions the video image may be overexposed.

② Region

If you are using the Philips SPC315NC in Europe, select '50 Hz' and if you are using the Philips SPC315NC in North America, select '60 Hz'. For Asia this setting is dependent on the local mains output. E.g. for China, select '50 Hz' and for Taiwan, select '60 Hz'. For Japan the setting is region dependent.

Please check your local mains output to find the correct 'Region' setting.

Picture controls



③ Full automatic control: on/off

This full automatic control mode provides a very easy way to get the best out of your Philips SPC315NC WebCam.

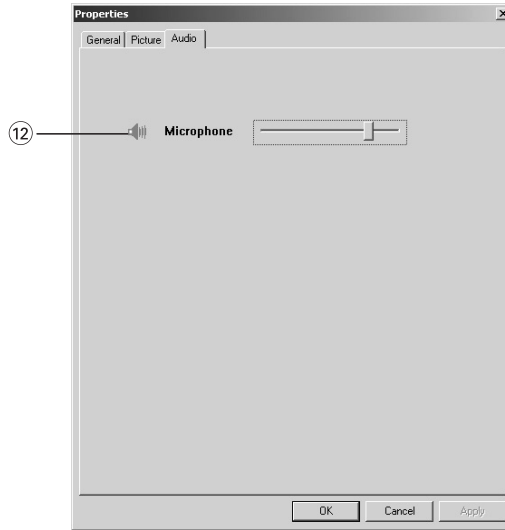
Or you can choose to have maximum manual control over the WebCam settings by switching the full automatic control mode off. Full automatic control 'on' is the preferred setting for normal use.

Techniques active within full automatic control mode are:

- *Automatic exposure control* and automatic white balance control, to provide the best video source signal possible;
- *Automatic frame rate selection* for improved camera sensitivity in low light conditions.

- ④ **Brightness**
Brightness enables you to adjust the brightness of the displayed image or video to suit your own preference. Use the slider to find your preferred setting.
- ⑤ **Contrast**
Contrast enables you to control the ratio between dark and light according to your own preference. Use the slider to find your preferred setting.
- ⑥ **Gamma**
Gamma enables you to brighten dark areas within the displayed image or video and visualize more details without over-exposing already light areas. Use the slider to find your preferred setting.
- ⑦ **Saturation**
Saturation enables you to set the colour reproduction from black and white to a full colour image or video according to your own preference. Use the slider to find your preferred setting.
- ⑧ **Exposure**
The exposure setting determines the amount of light that will fall onto the video sensor chip by controlling the gain and shutter speed. In manual mode you can control the gain and shutter speed settings manually. With full automatic mode 'on' the exposure controls are disabled.
- ⑨ **Backlight compensation**
Turn on the backlight compensation to improve the image quality when you have a scene where the background has a high illumination level (for instance when you are sitting in front of a bright light).
- ⑩ **Mirror**
Clicking the 'Mirror Image' checkbox flips the image horizontally. You can use this feature when you want to use the Philips SPC315NC and monitor as a mirror, or to take pictures of mirrored images.
- ⑪ **Black and white**
The 'Black and white' checkbox is used to switch from colour images to black and white and back.

Audio controls




⑫ Volume slider

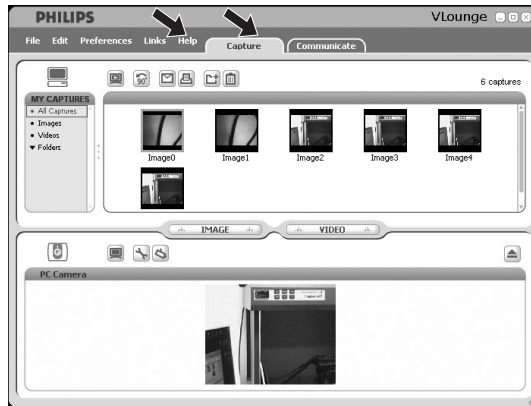
This slider provides manual control over the microphone volume.

VLounge

All applications can be accessed via the Philips V(ideo)-Lounge application. VLounge is the central application for easy access to your Philips WebCam and all image and video applications installed during setup.

- Start VLounge through the Windows QuickLaunch menu in your taskbar, via the program group 'SPC315NC WebCam', or by clicking the VLounge icon  on the desktop.

> The VLounge application will now be initiated and the VLounge selection screen appears.



- In the 'Capture' menu you can transfer, preview, edit, e-mail, print and organise your photos and video recordings.
- For additional support read the 'Help' documentation within the 'Help' option of the menubar of VLounge.

Using the applications

Skype

You can download and install Skype via the Skype website:

<http://www.skype.com>.

Please follow the on-screen instructions during downloading and installation of Skype.

MSN Messenger

You can download and install MSN Messenger via Microsoft MSN Messenger websites. In the list below you will find the website address for your country for downloading MSN Messenger:

Austria - <http://messenger.msn.at>

Belgium (Dutch) - <http://messenger.msn.be>

Belgium (French) - <http://messenger.fr.msn.be>

Denmark - <http://messenger.msn.dk>

Finland - <http://messenger.msn.fi>

France - <http://messenger.msn.fr>

Germany - <http://messenger.msn.de>

Italy - <http://messenger.msn.it>

The Netherlands - <http://messenger.msn.nl>

Norway - <http://messenger.msn.no>

Portugal - <http://messenger.msn.com>

Spain: - <http://messenger.msn.es>

Sweden - <http://messenger.msn.se>

Switzerland (German) - <http://messenger.msn.ch>

Switzerland (French) - <http://messenger.fr.msn.ch>

United Kingdom - <http://messenger.msn.co.uk>

USA - <http://messenger.msn.com>

Please follow the on-screen instructions during downloading and installation of MSN Messenger.

Yahoo! Messenger

You can download and install Yahoo! Messenger via Yahoo! Messenger websites. In the list below you will find the website address for your country for downloading Yahoo! Messenger:

Austria - <http://messenger.yahoo.com>
Belgium - <http://messenger.yahoo.com>
Denmark - <http://dk.messenger.yahoo.com/>
Finland - <http://messenger.yahoo.com>
France - <http://fr.messenger.yahoo.com/>
Germany - <http://de.messenger.yahoo.com/>
Italy - <http://it.messenger.yahoo.com/>
The Netherlands - <http://messenger.yahoo.com>
Norway - <http://no.messenger.yahoo.com/>
Portugal - <http://messenger.yahoo.com>
Spain - <http://es.messenger.yahoo.com/>
Sweden - <http://se.messenger.yahoo.com/>
Switzerland - <http://messenger.yahoo.com>
United Kingdom - <http://uk.messenger.yahoo.com>
USA - <http://messenger.yahoo.com>

Please follow the on-screen instructions during downloading and installation of Yahoo! Messenger.

AOL Instant Messenger

You can download and install AOL Instant Messenger via the America Online website. Please find below the website address for downloading AOL Instant Messenger:

<http://www.aim.com/>

Please follow the on-screen instructions during downloading and installation of AOL Instant Messenger.

Making snapshots using Windows® XP

You can use Microsoft® Windows® XP to make snapshots with your Philips SPC315NC WebCam.

If you need additional support, please refer to the 'Help' topics of Microsoft® Windows® XP. Search for 'Get picture'.

Technical specifications

Sensor	QVGA CMOS
Video resolution (Max.)	QVGA (320 X 240)
Image resolution (Max.)	VGA (640 X 480)
Illumination	< 10 lux
Integrated lens	F=2.8
Data format	I420, IYUV
Interfacing	USB 2.0 compatible (2.1 m USB cable)
Microphone	External microphone provided
Power	Supplied via USB cable
Voltage requirements	5V (— — —), 0.5A

Disclaimer

Philips makes no warranty of any kind with regard to this material, including, but not limited to, the implied warranties of merchantability and fitness for a particular purpose. Philips assumes no responsibility for any error that may appear in this document. Philips makes no commitment to update nor to keep current the information contained in this document.

FCC compliance

This device complies with Part 15 of the FCC Rules.

Operation is subject to the following two conditions:

- 1** this device may not cause harmful interference, and
- 2** this device must accept any interference received, including interference that may cause undesired operation.

Note!

This equipment has been tested and found to comply with the limits for a Class B digital device, pursuant to Part 15 of the FCC Rules. These limits are designed to provide reasonable protection against harmful interference in a residential installation. This equipment generates, uses and can radiate radio frequency energy and, if not installed and used in accordance with the instructions, may cause harmful interference to radio communications. However, there is no guarantee that interference will not occur in a particular installation. If this equipment does cause harmful interference to radio or television reception, which can be determined by turning the equipment off and on, the user is encouraged to try to correct the interference by one or more of the following measures:

- *Reorient or relocate the receiving antenna.*
- *Increase the separation between the equipment and receiver.*
- *Connect the equipment to an outlet on a circuit different from that to which the receiver is connected.*
- *Consult the dealer or an experienced radio/TV technician for help.*

Any unauthorized modification to this equipment could result in the revocation of the authorization to operate the equipment.

Environmental information

Disposal of your old product

Your product is designed and manufactured with high quality materials and components, which can be recycled and reused.



When this crossed-out wheeled bin symbol is attached to a product it means the product is covered by the European Directive 2002/96/EC

Please inform yourself about the local separate collection system for electrical and electronic products.

Please act according to your local rules and do not dispose of your old products with your normal household waste. The correct disposal of your old product will help prevent potential negative consequences for the environment and human health.

WARNING

Plastic bags can be dangerous. To avoid danger of suffocation, keep this bag away from babies and small children.

System requirements

- Microsoft® Windows® 98SE/2000/ME or XP;
- Pentium® III, 500 Mhz or equivalent;
- 128MB RAM and 100 MB free hard disk space;
- One free USB port and CD-ROM or DVD drive.

Disclaimer of warranty

The software on the CD-ROM supplied is sold 'as is' and without warranties whether expressed or implied. Because of the various software and hardware environments into which this program may be put, no warranty of fitness for a particular purpose is offered.

Limitations of damages

The vendor will not be liable for any indirect, special, incidental or consequential damages (including damages for loss of business, loss of profits, or the like), whether based on breach of contract, tort (including negligence), product liability or otherwise, even if the vendor or its representatives have been advised of the possibility of such damages and even if a remedy set forth herein is found to have failed its essential purpose.

