

Important safety instructions

Warning

- The Electrical network is classified as hazardous. The only way to power down the charger is to unplug the power supply from the electrical outlet. Ensure that the electrical outlet is always easily accessible.
- Refer to safety information before using the product.
- This product complies with European R&TTE directive 1999/5/EC
- Use only the power supply listed in the user instructions.
- Use only the batteries listed in the user instructions.
- Do not allow the product to come into contact with liquids.
- Risk of explosion if battery is replaced by an incorrect type.
- Dispose of used batteries according to the instructions.
- When the handset rings or when the handsfree is activated, keep the handset away from your ear to avoid hearing damage.

1 Overview

In call

- PHONEBOOK
- Adjust the volume
- End calls
- Turn the speaker on/off
- Mute/unmute the microphone
- #a/A Enter a pause

Standby

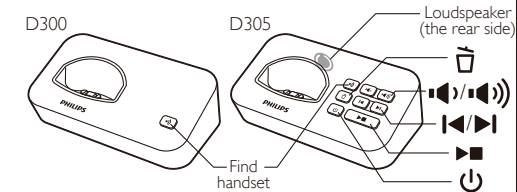
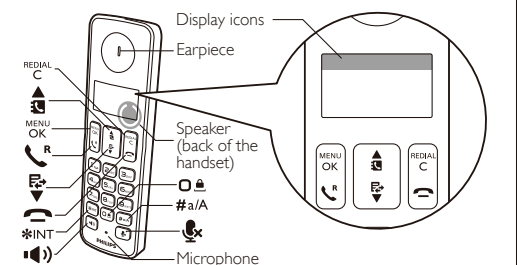
- Access the main menu
- PHONEBOOK
- Call log
- Make and receive calls
- *INT Make intercom call
- Lock/unlock the keypad
- Make and receive calls through the speaker

In menu

- Confirm / Enter the option menu / Select
- Cancel
- Up / down
- Exit menu

In text input

- Delete text
- Enter a space
- #a/A Switch upper/lower case



PHILIPS

Short user manual

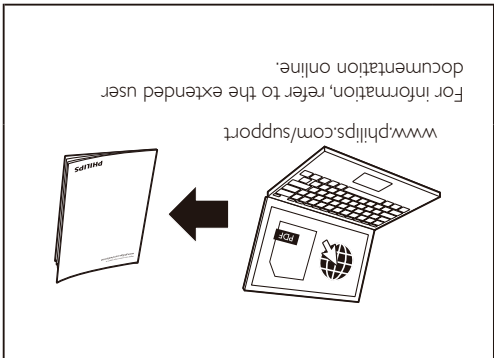


D300
D305

Register your product and get support at
www.philips.com/welcome

© 2013 Koninklijke Philips Electronics N.V. All rights reserved.
QSG-D300-305
05_EN_V1.0
WK1315
When this crossed-out wheeled bin symbol is attached to a product it means that the product is covered by the European Directive 2002/96/EC.
Reproduction in whole or in part is prohibited without the written consent of the copyright owner. Trademarks are the property of Koninklijke Philips Electronics N.V. or their respective owners.

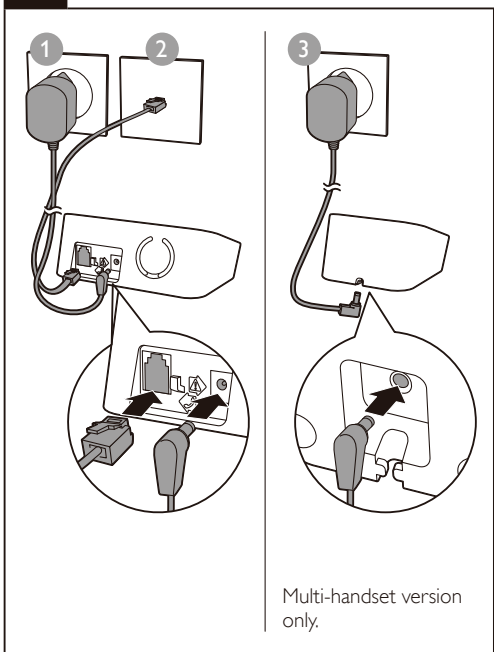
CE 0168



Display icons

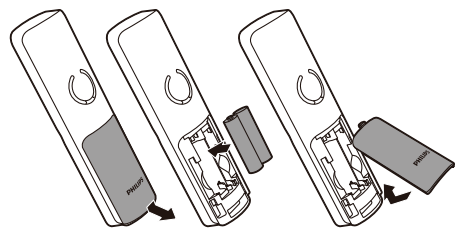
- It displays the connection between the handset and the base. The more the bars are shown, the better the connection is.
- It remains steadily on when browsing incoming calls in the call log.
- It indicates an outgoing call in the redial list.
- It flashes when there is a new missed call or when browsing new missed calls. It remains steadily on when browsing the missed calls in call log that are already read.
- It flashes when receiving incoming call. It remains steadily on during a call.
- The speaker is on.
- The ringer is off.
- (for D305 only) Answering machine: it flashes when there is a new message. It remains steadily on when the telephone answering machine is turned on.
- Voice messages indicator: flashes for new messages, is steady for reviewed messages. * This is network dependent
- It displays when you scroll up/down a list or increase and decrease the volume.
 - There are more digits on the right. Press REDIAL C to read.
- ECO+ The ECO+ mode is activated.

2 Connect



3 Get started

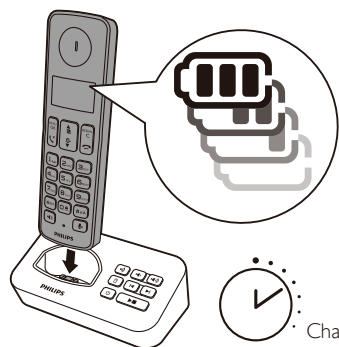
Insert batteries



Configure your phone

- 1 When using your phone for the first time, you see a welcome message (country dependent).
- 2 Set the country and language if prompted.
- 3 Set the date and time.
 - If the time is in 12-hour format, press / key to select **[am]** or **[pm]** (country dependent).

Charge your phone



- > 70% 10% - 40%
- 40% - 70% < 10%

Flashing: low battery
Scrolling: charging in progress

4 Enjoy

Phonebook

Add record

- 1 Press .
- 2 Select **[Phonebook]** > **[Add new]**.
- 3 Follow on-screen instructions.

Call from the phonebook

- 1 Press .
- 2 Select a record and press .

Direct access memory

You have 2 direct access memories (Keys 1 and 2). To dial the saved phone number automatically, press and hold on the keys in standby mode. Depending on your country, keys 1 and 2 are preset to **[1_voicemail]** (voice mail number) and **[2_info svc]** (information service number) of your network operator respectively (network dependent).

Call log

Call from the call log

- 1 Press .
- 2 Select a record and press .

Add record

- 1 Press > > **[Save number]**.
- 2 Follow on-screen instructions.

Delete record

- 1 Press > > **[Delete]**.
- 2 Follow on-screen instructions.

Redial list

Call from the redial list

- 1 Press .
- 2 Select a record and press .

Add record

- 1 Press > > **[Save number]**.
- 2 Follow on-screen instructions.

Delete record

- 1 Press > > **[Delete]**.
- 2 Follow on-screen instructions.

Record an announcement (for D305 only)

- 1 Press .
- 2 Select **[Answ. Machine]** > **[Announcement]**.
- 3 Follow on-screen instructions.

Register additional handsets

You can register additional handsets to the base station.

- 1 Press .
- 2 Select **[Services]** > **[Register]**, then press to confirm.
- 3 Press and hold on the base station for 5 seconds.
- 4 Enter the system PIN/Passcode (0000).
- 5 Press to confirm the PIN/Passcode.
 - ↳ Registration is completed in less than 2 minutes.

Restore default settings

You can reset your phone settings to the original factory settings.

- 1 Press .
- 2 Select **[Services]** > **[Reset]**, then press to confirm.
- 3 Follow on-screen instructions.

Note

- You may recall the original PIN/Passcode by following this procedure.

Technical data

Battery

- Philips: 2 x AAA NiMH 1.2 V Rechargeable 550 mAh batteries

Use only the supplied batteries.

Adapter

Base and charger:

Philips:	MN-A102-U130	S003IB0600040
Input:	100-240 V	100-240 V
	50/60 Hz 0.2 A	50/60 Hz 0.15 A
Output:	6 V 400 mA	6 V 400 mA

Phonebook with 50 entries

Call log with 20 entries

Talk time: 16 hours

Standby time: 250 hours

Note

- You can install a DSL (digital subscriber line) filter to prevent noise and caller ID problems caused by the DSL interference.
- You can find the Declaration of Conformity on www.p4c.philips.com.

? Frequently asked questions

No signal bar is displayed on the screen.

- The handset is out of range. Move it closer to the base station.
- If the handset displays **[Unregistered]**, register your handset.

If I fail to pair (register) the additional handsets to the base station, what do I do?

Your base memory is full. Access > **[Services]** > **[Unregister]** to unregister the unused handsets and try again.

I have chosen a wrong language which I cannot read, what do I do?

- 1 Press to go back to the standby screen.
- 2 Press to access the main menu screen.
- 3 The following options will appear on the screen:

[Phone setup] > [Language]
[Réglages] > [Langue]
[Telefon-Setup] > [Sprache]
[Config. telef.] > [Lingua]

- 4 Select it to access the language options.

- 5 Select your own language.

My handset is in searching status, what do I do?

- Make sure that the base station has power supply.
- Register the handset to the base station.
- Move the handset closer to the base station.

I cannot change the settings of my voice mail, what do I do?

The voice mail service is managed by your service provider but not the phone itself. Contact your service provider to change the settings.

No display

- Make sure the batteries are charged.
- Make sure there are power and phone connections.

The handset on the charger does not charge.

- Make sure the batteries are inserted correctly.
- Make sure the handset is placed properly on the charger. The battery icon animates when charging.
- Make sure the docking tone setting is turned on. When the handset is placed correctly on the charger, you can hear a docking tone.
- The charging contacts are dirty. Disconnect the power supply first and clean the contacts with a damp cloth.
- Purchase new ones with the same specifications.

Bad audio (crackles, echo, etc.)

- The handset is nearly out of range. Move it closer to the base station.
- The phone receives interference from the nearby electrical appliances. Move the base station away from them.
- The phone is at a location with thick walls. Move the base away from them.

The handset does not ring.

Make sure the handset ringtone is turned on.

The caller ID does not display.

- The service is not activated. Check with your service provider.
- The caller's information is withheld or unavailable.