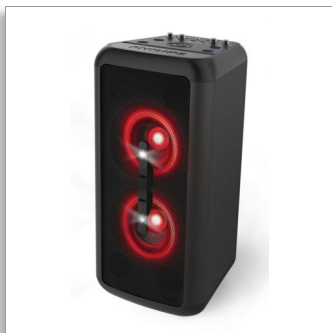




Philips  
Bluetooth party speaker

Bluetooth®



TANX200

## Drop the bass

Shake the room with the Bluetooth party speaker that has twin bass drivers for thundering bass! You can plug in guitar and mic to rock your own tunes. You get party light effects, fun karaoke functions, and 14 hours play time.

### Boom. Shake the room.

- 14 hours play time. Loud, powerful sound with big bass
- 2x2" tweeters. 2x5.25" bass drivers
- Party light effects. Blaze to the music
- 2x mic inputs and 1x guitar input (6.3 mm)
- Karaoke features: echo, female/male voice switch, vocal fader

### Rock those skills

- Up to 10 m wireless range
- Buttons on speaker for volume, music control, lights
- Dials on speaker for mic, echo, and guitar volume

### Bring the beats

- Built-in carry handle. Speaker weighs 7.7 kg
- Dimensions: 268x556x285 mm
- Easy pairing: just press the Bluetooth button
- Line-in and line-out (3.5 mm)

**PHILIPS**

# Specifications

## Sound

- Sound enhancement: digital sound control, Dynamic Bass Boost, bass reflex system, Karaoke
- Power (RMS and THD %): 80W (THD 1%)
- Output Power: 160W (maximum)

## Speaker

- No. of sound channels: 2.0
- Configuration: bi-Amp
- Tweeter: 2" x 2
- Woofer: 5.25" x 2
- Color: Black
- Speaker Grille

## Audio Playback

- Playback Media: MP3-USB

## Connectivity

- Line-in: 1x 3.5mm
- Mic in: 2 x (6.3mm w/ vol control)
- Line-out: 1x 3.5mm
- Bluetooth profiles: Streaming Format: SBC, Music streaming (A2DP), Playback/volume control: AVRCP, Multipoint (Multipair) support

## Convenience

- Karaoke: echo control, female/male voice switch,

vocal fader

- User Interface: LED: Red for ECO and Standby, Audio tones: BT
- Volume control: Tact switch

## Display

- Speaker light effect

## Accessories

- Included accessories: AC Power Cord, Quick start guide, Warranty certificate

## Power

- AC power supply: Power cord (detachable)
- AC voltage support: 110-220V (full range)
- Power supply: 100-240VAC, 50/60Hz
- Battery Type: Lithium-ion (built-in)
- Battery life time: 14 hr
- Standby mode

## Dimensions

- Gross weight: 9.62 kg
- Net Weight: 7.7 kg
- Product dimensions (WxDxH): 268x556x285 mm
- Packaging dimensions (W x H x D): 358 x 622 x 340 mm

# Highlights

## Pumping bass

This powerful speaker has everything you need to get the party started right! With powerful sound and huge, pumping bass, you'll fill the room with beats. 14 hours play time from a single charge lets you rock the tunes all night.

## Blaze to the music

Get everyone up and dancing with party light effects. Colored lights on the speakers pulse in time to the music, flash in different orders, or stay on in a steady glow.

## Sing it. Play it.

Mic and guitar inputs (6.3 mm) let you take the party up a notch. Sing to a playlist, or rock out to your own playing. You can even fade out the vocals of a song you're singing along to, so only your voice is heard. Fun karaoke effects give you the ability to add echo to the vocals, or switch vocal sounds from female to male and back again!

## Take the party with you

The built-in carry handle means you can play wherever you like. Take the tunes to a friend's house. Set up on the basketball court. You can even pair with another Philips TANX200 party speaker using the 3.5 mm line-in connection.

## Big sounds, easy pairing

Pairing with your Bluetooth device is simple. Just press the Bluetooth button and the speaker is ready to pair. The wireless range is 10 m.



Issue date 2022-05-09

Version: 4.1.1

12 NC: 8670 001 61939  
UPC: 8 40063 20014 2

© 2022 Koninklijke Philips N.V.  
All Rights reserved.

Specifications are subject to change without notice.  
Trademarks are the property of Koninklijke Philips N.V.  
or their respective owners.

[www.philips.com](http://www.philips.com)