

Always there to help you

Register your product and get support at
www.philips.com/welcome



SBT300/05



User manual

PHILIPS

Contents

1	Important	2
	Safety	2
	Notice	2

2	Your Bluetooth Speaker	3
	Introduction	3
	What's in the box	3
	Overview of the main unit	4

3	Get started	4
	Connect power	4
	Turn on	5

4	Play	6
	Play from a Bluetooth device	6
	Play from an external device	7
	Control play	7

5	Product information	7
	Specifications	7

6	Troubleshooting	8
----------	------------------------	----------

1 Important

Safety

Warning

- Never remove the casing of this apparatus.
 - Never lubricate any part of this apparatus.
 - Never look into the laser beam inside this apparatus.
 - Never place this apparatus on other electrical equipment.
 - Keep this apparatus away from direct sunlight, naked flames or heat.
 - Ensure that you always have easy access to the power cord, plug or adaptor to disconnect the apparatus from the power.
-
- The device shall not be exposed to dripping or splashing.
 - Do not place any source of danger on the device (e.g. liquid filled objects, lit candles).
 - Where the MAINS plug or an appliance coupler is used as the disconnect device, the disconnect device shall remain readily operable.
 - Make sure that there is enough free space around the product for ventilation.
 - Battery usage CAUTION – To prevent battery leakage which may result in bodily injury, property damage, or damage to the unit
 - Install all batteries correctly, + and - as marked on the unit.
 - Do not mix batteries (old and new or carbon and alkaline, etc.).
 - Remove batteries when the unit is not used for a long time.
 - Batteries (battery pack or batteries installed) shall not be exposed to excessive heat such as sunshine, fire or the like.
 - Where the plug of the Direct Plug-in Adapter is used as the disconnect device, the disconnect device shall remain readily operable.
 - Only use attachments/accessories specified by the manufacturer.

Notice

Any changes or modifications made to this device that are not expressly approved by WOOX Innovations may void the user's authority to operate the equipment.

CE 0890

This product complies with the radio interference requirements of the European Community.
A copy of the EC declaration of Conformity is available in the Portable Document Format (PDF) version of the user manual at www.philips.com/support.



Your product is designed and manufactured with high quality materials and components, which can be recycled and reused.



When this crossed-out wheeled bin symbol is attached to a product it means that the product is covered by the European Directive 2002/96/EC.

Please inform yourself about the local separate collection system for electrical and electronic products.
Please act according to your local rules and do not dispose of your old products with your normal household waste. Correct disposal of your old product helps to prevent potential negative consequences for the environment and human health.



Your product contains batteries covered by the European Directive 2006/66/EC, which cannot be disposed with normal household waste. Please inform yourself about the local rules on separate collection of batteries because correct disposal helps to prevent negative consequences for the environmental and human health.

Environmental information

All unnecessary packaging has been omitted. We have tried to make the packaging easy to separate into three materials: cardboard (box), polystyrene foam (buffer) and polyethylene (bags, protective foam sheet.)

Your system consists of materials which can be recycled and reused if disassembled by a specialized company. Please observe the local regulations regarding the disposal of packaging materials, exhausted batteries and old equipment.



Be responsible
Respect copyrights

The making of unauthorized copies of copy-protected material, including computer programs, files, broadcasts and sound recordings, may be an infringement of copyrights and constitute a criminal offence. This equipment should not be used for such purposes.



Note

- The type plate is located on the back of the apparatus.

2 Your Bluetooth Speaker

Congratulations on your purchase, and welcome to Philips! To fully benefit from the support that Philips offers, register your product at www.philips.com/welcome.

Introduction

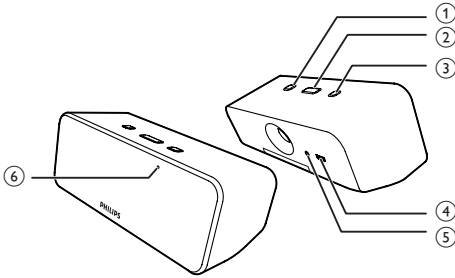
With this speaker, you can enjoy audio from the compatible Bluetooth device or other audio devices.

What's in the box

Check and identify the contents of your package:

- Main unit
- 1x AC adaptor
- Short user manual

Overview of the main unit



- ① **ON/OFF**
 - Turn on/off the unit.
- ② **+ / -**
 - Adjust volume.
- ③ **▶||**
 - Press to play/pause in Bluetooth mode.
- ④ **DC IN 5V-1A**
 - Power supply socket.
- ⑤ **AUDIO IN**
 - Connect an audio device.
- ⑥ **Bluetooth indicator**
 - Steadily on when the speaker is connected with Bluetooth compatible device.
 - Flashes when disconnected Bluetooth pairing .

3 Get started

Caution

- Use of controls, adjustments, or performance of procedures other than herein may result in hazardous radiation exposure or other unsafe operation.

Always follow the instructions in this chapter in sequence.

If you contact Philips, you will be asked for the model and serial number of this apparatus. The model number and serial number are on the bottom of the apparatus. Write the numbers here:

Model No. _____

Serial No. _____

Connect power

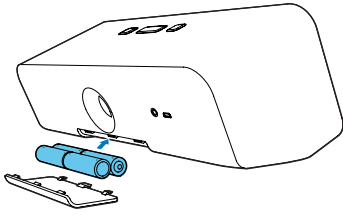
This Bluetooth speaker can be powered by either AC power or batteries.

Battery power

Warning

- Risk of explosion! Keep batteries away from heat, sunshine or fire. Never discard batteries in fire.
- Danger of explosion if battery is incorrectly replaced. Replace only with the same or equivalent type.
- The battery contains chemical substances, so it should be disposed of properly.
- Keep children away from the battery.

- 1 Open the battery compartment.
- 2 Insert AA batteries with correct polarity (+/-) as indicated.
- 3 Close the battery compartment.



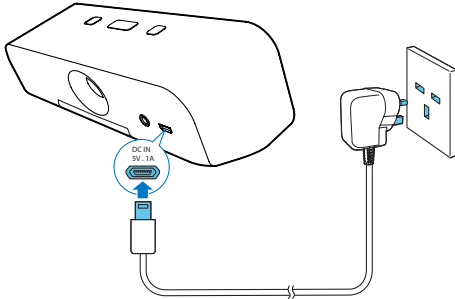
AC power

! Caution

- Risk of product damage! Make sure that the power supply voltage corresponds to the voltage printed on the back of the speaker.

Connect the AC power adaptor to:

- the power supply socket on the back of the speaker;
- the wall power outlet.



Turn on

- Switch ON/OFF on the speaker to the ON position.
↳ The Bluetooth indicator flashes (blue).

Switch to standby mode

The speaker switches to standby mode in the following situations.

- **In Bluetooth mode:** deactivate bluetooth connection without Audio-in cable plugged in.
- **In MP3 link mode:** no audio signal detected over 15 minutes without Audio-in cable plugged in.
- The battery level is low.

4 Play

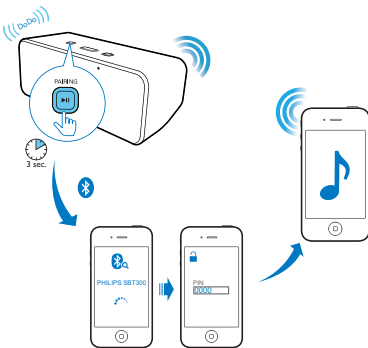
Play from a Bluetooth device

You can listen to a Bluetooth device through this speaker:

Note

- The effective operation range between the speaker and your Bluetooth device is approximately 10 meters (30 feet).

- 1 Switch **ON/OFF** to turn on the speaker.
- 2 Press and hold **▶||** for 3 seconds to activate Bluetooth function on the speaker.
↳ The Bluetooth indicator flashes.
- 3 Activate the Bluetooth function in your Bluetooth device (see the device user manual).
- 4 Select "PHILIPS SBT300" on your device for pairing.
↳ The speaker gives out 2 beeps and the Bluetooth indicator stays steadily on.
 - For elder devices, you need to input "0000" as pairing password.
- 5 Start music play on your Bluetooth device .




Play from a PC

You can also listen to audio through Bluetooth in PC.

Note

- Make sure that you have installed Bluetooth driver in your PC before pairing.
- The steps below are only for windows 7 operating system. If you use other OS/IOS , refer to other OS/ IOS help.

- 1 Switch **ON/OFF** to turn on the speaker.
- 2 Press and hold **▶||** for 3 seconds to activate Bluetooth function on the speaker
↳ The Bluetooth indicator flashes.
- 3 Activate the Bluetooth function in your PC.
- 4 Add a Bluetooth device in your PC and select "PHILIPS SBT300" for pairing.
↳ The speaker gives out 2 beeps and the Bluetooth indicator steadily on.
- 5 Set "PHILIPS SBT300" as default communication device in your PC.
 - 1). Right click the speaker icon () in the lower right corner of the Windows home screen and select "**Playback Devices**" from the option menu
 - 2). Right click desired speaker and select "**Set as Default communication Device**".
- 6 Start music play on your PC .

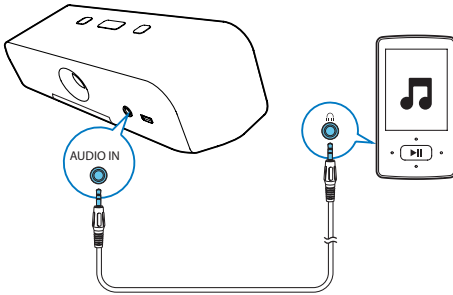
Play from an external device

You can also listen to an external audio device through this speaker.

Note

- Your speaker can play under MP3-LINK audio only when the Bluetooth paused or stopped.

- 1 Connect the MP3-LINK cable to:
 - the MP3-LINK jack (3.5mm) on the back of the speaker.
 - the headphone jack on an external device.
- 2 Start to play on the device.



Control play

During play,

- press **VOL +/-** to increase or decrease the volume level.
- press **▶||** to play or pause.
 - ↳ Available only in Bluetooth mode.

5 Product information

Note

- Product information is subject to change without prior notice.

Specifications

Amplifier

Rated Output Power	2 × 2 W RMS
Signal to Noise Ratio	>67 dB
Audio in	600 mV RMS 20 kohm

Bluetooth

Bluetooth version	V2.1+ EDR
Frequency band	2.402-2.480 GHzISM Band
Rang	10m (free space)

General information

AC power (power adaptor)	Model: ASUC12B-050100 Input: 100-240V~, 50/60Hz, 0.3A; Output: 5V = 1A;
Operation Power Consumption	4W
Dimensions - Main Unit (W × H × D)	300 × 117 × 118mm
Weight- Main Unit	1.15 kg

6 Troubleshooting



Warning

- Never remove the casing of this apparatus.

To keep the warranty valid, never try to repair the system yourself.

If you encounter problems when using this apparatus, check the following points before requesting service. If the problem remains unsolved, go to the Philips web site (www.philips.com/welcome). When you contact Philips, ensure that the apparatus is nearby and the model number and serial number are available.

No power

- Make sure that the AC power plug of the speaker is connected properly.
- Make sure that there is power at the AC outlet.
- Make sure that the batteries are inserted correctly.

No sound

- Adjust the volume.

No response from the speaker

- Restart the speaker.



Specifications are subject to change without notice

2014 © WOOX Innovations Limited.

All rights reserved.

Philips and the Philips' Shield Emblem are registered trademarks of Koninklijke Philips N.V. and are used by WOOX Innovations Limited under license from Koninklijke Philips N.V.

SBT300_05_UM_V1.0

