

PHILIPS

AJ3116

AJ3116M
AJ3116W



EN User manual
ES Manual del usuario
FR Mode d'emploi

Register your product and get support at www.philips.com/support



Philips and the Philips Shield Emblem are registered trademarks of Koninklijke Philips N.V. and are used under license. This product has been manufactured by and is sold under the responsibility of MMD Hong Kong Holding Limited, or one of its affiliates, and MMD Hong Kong Holding Limited, is the warrantor in relation to this product.

AJ3116M_AJ3116W_37_UM_V7.0



EN

1 Important

- Read these instructions.
- Keep these instructions.
- Heed all warnings.
- Follow all instructions.
- Do not use this apparatus near water.
- Clean only with dry cloth.
- Do not block any ventilation openings. Install in accordance with the manufacturer's instructions.
- Do not install near any heat sources such as radiators, heat registers, stoves, or other apparatus (including amplifiers) that produce heat.
- Protect the power cord from being walked on or pinched, particularly at plugs, convenience receptacles, and the point where they exit from the apparatus.
- Only use attachments/accessories specified by the manufacturer.
- Use only with the cart, stand, tripod, bracket, or table specified by the manufacturer or sold with the apparatus. When a cart is used, use caution when moving the cart/apparatus combination to avoid injury from tip-over.
- Unplug this apparatus during lightning storms or when unused for long periods of time.
- Refer all servicing to qualified service personnel. Servicing is required when the apparatus has been damaged in any way, such as power-supply cord or plug is damaged, liquid has been spilled or objects have fallen into the apparatus, the apparatus has been exposed to rain or moisture, does not operate normally, or has been dropped.
- Battery usage CAUTION – To prevent battery leakage which may result in bodily injury, property damage, or damage to the unit:
 - Install all batteries correctly, + and - as marked on the unit.
 - Do not mix batteries (old and new or carbon and alkaline, etc.).
 - Remove batteries when the unit is not used for a long time.
- Apparatus shall not be exposed to dripping or splashing.
- Do not place any sources of danger on the apparatus (e.g. liquid filled objects, lighted candles).
- This product may contain lead and mercury. Dispose of these materials may be regulated due to environmental considerations. For disposal or recycling information, please contact your local authorities or the Electronic Industries Alliance: www.eia.org.
- Where the plug of the Direct Plug-in Adapter is used as the disconnect device, the disconnect device shall remain readily operable.

2 Your clock radio

Congratulations on your purchase, and welcome to Philips! To fully benefit from the support that Philips offers, register your product at www.philips.com/welcome.

What's in the box (Fig. ①)

3 Get started

Always follow the instructions in this chapter in sequence.

Install battery

The batteries can only be changed in standby mode.

Caution

- Risk of explosion! Keep the batteries away from heat, sunshine or fire. Never discard batteries in fire.
- The battery contains chemical substances, so it should be disposed of properly.

Insert 2 AAA batteries with correct polarity (+/-) as illustrated. (Fig. ①)

Connect power (Fig. ②)

Caution

- Risk of product damage! Make sure that the power voltage corresponds to the voltage printed on the back or underside of the clock radio.
- Risk of electric shock! When you unplug the power adapter, always pull the plug from the socket. Never pull the cord.

Note

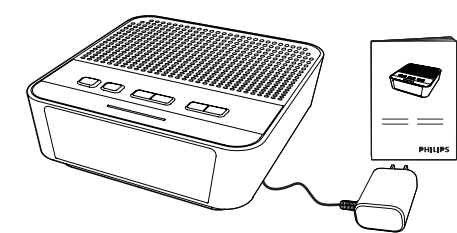
- The type plate is located at the bottom of the clock radio.

Set time (Fig. ③)

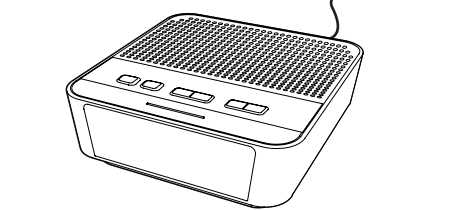
Note

- You can only set time in standby mode.

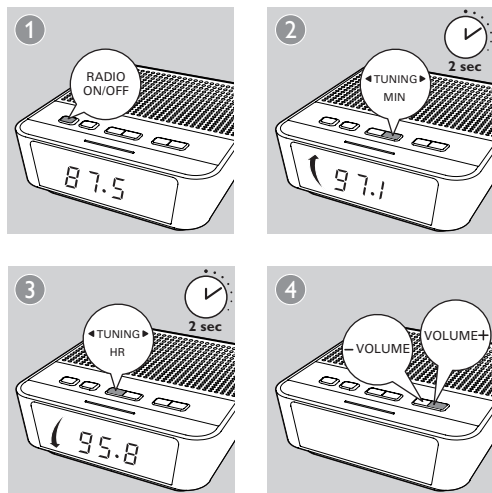
①



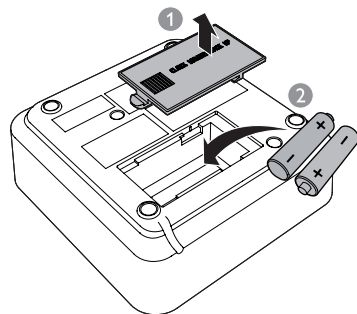
②



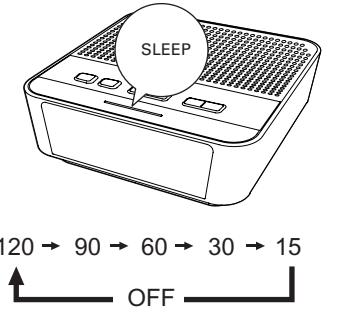
⑥



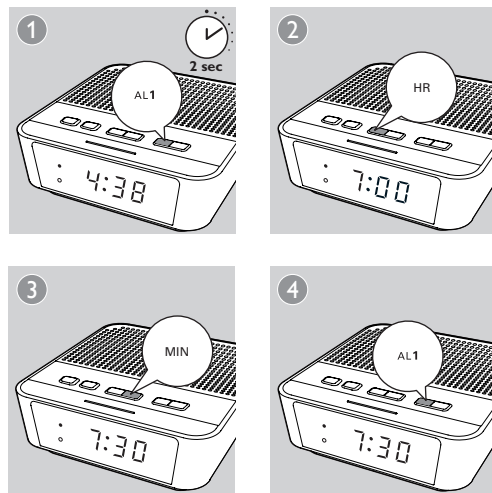
③



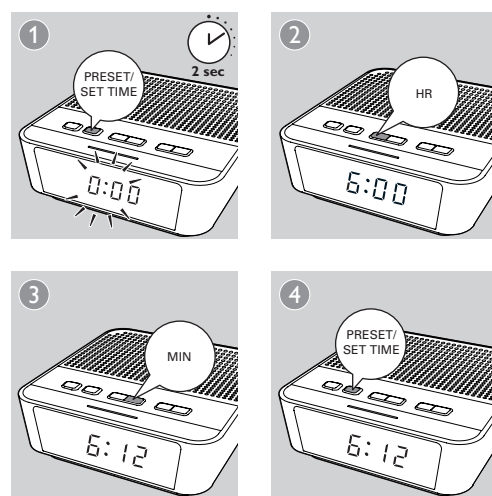
④



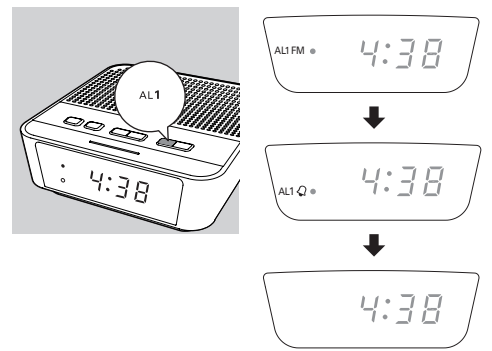
⑦



⑤



⑧



4 Listen to FM radio

Note

- Keep the clock radio away from other electronic devices to avoid radio interference.
- For better reception, fully extend and adjust the position of the FM antenna.

Tune to FM radio stations (Fig. ⑥)

You can store up to 10 FM radio stations.

- Tune to an FM radio station.
- Press and hold **PRESET** for two seconds.
 - The preset number begins to blink.
- Press **TUNING** repeatedly to select a number.
- Press **PRESET** again to confirm.
- Repeat steps 1 to 4 to store other stations.

Tip

- To remove a pre-stored station, store another station in its place.

Select a preset radio station

In tuner mode, press **PRESET** repeatedly to select a preset number.

Adjust volume

While listening, press **-VOLUME +** to adjust volume.

5 Other features

Set alarm timer

Set alarm

Note

- You can only set the alarm in standby mode.
- Make sure that you have set the clock correctly.

Follow the illustration to set the first alarm. (Fig. ⑦)

- AL1**: set the first alarm.
- AL2**: set the second alarm.

Tip

- The clock radio exits alarm setting mode when being idle for 10 seconds.

Select alarm source

You can select FM radio or buzzer as the alarm source. (Fig. ⑧)

- The corresponding alarm icon lights up.

Note

- The gentle wake-up function is for radio source only.

Activate/deactivate alarm timer

Press **AL1** or **AL2** repeatedly to activate or deactivate the alarm timer. (Fig. ⑧)

- If the alarm timer is deactivated, the alarm indicator turns off.
- The alarm repeats ringing for the next day.

Snooze alarm

When alarm sounds, press **SNOOZE**.

- The alarm snoozes and repeats ringing nine minutes later.

Set sleep timer

This clock radio can switch to standby mode automatically after a preset period. (Fig. ④)

To deactivate the sleep timer:

- Press **SLEEP** repeatedly until [OFF] (off) appears.

6 Product information

Note

- Product information is subject to change without prior notice.

Specifications

Amplifier

Rated Output Power 200mW RMS

Tuner (FM)

Tuning Range 87.5-108 MHz

Tuning Grid 100 KHz

Sensitivity	- Mono, 26 dB S/N Ratio	<22 dBf
	- Stereo, 46 dB S/N Ratio	<51.5 dBf
Total Harmonic Distortion		<3%
Signal to Noise Ratio		>50 dBA

General information

AC Power (power adapter)	Brand name: Philips Model: AS030-050-EA055/ EML0500550; Input: 100-240 V~, 50/60 Hz; 0.15 A; Output: 5V \pm 0.55 A
Operation Power Consumption	<5 W
Standby Power Consumption	<1 W

Dimensions:	
Main Unit (W x H x D)	130 x 46 x 130 mm
Weight - Main Unit	0.26 kg

7 Troubleshooting

Warning

- Never remove the casing of this device.

To keep the warranty valid, never try to repair the system yourself. If you encounter problems when using this device, check the following points before requesting service. If the problem remains unsolved, go to the Philips Web page (www.philips.com/support). When you contact Philips, make sure that the device is nearby and the model number and serial number are available.

- No power**
 - Ensure that the AC power plug of the unit is connected properly.
 - Ensure that there is power at the AC outlet.

- No sound**
 - Adjust the volume.

- No response from the unit**
 - Disconnect and reconnect the AC power plug, then turn on the unit again.

- Poor radio reception**
 - Increase the distance between the unit and your TV or VCR.
 - Fully extend the FM antenna.

- Alarm does not work**
 - Set the clock/alarm correctly.

- Clock/alarm setting erased**
 - Power has been interrupted or the power plug has been disconnected.
 - Reset the clock/alarm.

8 Notice

Any changes or modifications made to this device that are not expressly approved by MMD Hong Kong Holding Limited may void the user's authority to operate the equipment. This Class B digital apparatus complies with Canadian ICES-003. This device complies with Industry Canada license-exempt RSS standard(s).

The device complies with the FCC-Rules, Part-15. Operation is subject to the following two conditions:

- This device may not cause harmful interference, and
- This device must accept any interference received, including interference that may cause undesired operation.

Disposal of your old product and batteries

Your product is designed and manufactured with high quality materials and components, which can be recycled and reused. Never dispose of your product with other household waste. Please inform yourself about the local rules on the separate collection of electrical and electronic products and batteries. The correct disposal of these products helps prevent potentially negative consequences on the environment and human health. Your product contains batteries, which cannot be disposed of with normal household waste. Please inform yourself about the local rules on separate collection of batteries. The correct disposal of batteries helps prevent potentially negative consequences on the environment and human health. Please visit www.recycle.philips.com for additional information on a recycling center in your area.

Environmental information
All unnecessary packaging has been omitted. We have tried to make the packaging easy to separate into three materials: cardboard (box), polystyrene foam (buffer) and polyethylene (bags, protective foam sheet).
Your system consists of materials which can be recycled and reused if disassembled by a specialized company. Please observe the local regulations regarding the disposal of packaging materials, exhausted batteries and old equipment.

ES

1 Importante

- Lea estas instrucciones.
- Guarde estas instrucciones.
- Preste atención a todas las advertencias.
- Siga todas las instrucciones.
- No use este aparato cerca del agua.

4 Cómo escuchar la radio FM

Note

- Mantenga el radio lejos de otros dispositivos electrónicos para evitar interferencias de radio.
- Para mejorar la recepción, extienda por completo la antena FM y ajuste su posición.

Sintonización de emisoras de radio FM (Figura ⑥)

Almacenamiento manual de las emisoras de radio FM

Puede almacenar hasta 10 emisoras de radio FM.

- Sintonice una emisora de radio FM.
- Mantenga pulsado **PRESET** durante 2 segundos.
 - El número de presintonía empezará a parpadear.
- Pulse **TUNING** varias veces para seleccionar un número.
- Vuelva a pulsar **PRESET** para confirmar.
- Repita del paso número 1 al 4 para almacenar otras emisoras.

Consejo

- Para eliminar una emisora programada, guarde otra emisora en su lugar.

Selección de una emisora de radio presintonizada

En el modo de sintonizador, pulse **PRESET** varias veces para seleccionar un número de presintonía.

Ajuste del volumen

Mientras escucha, pulse **-VOLUME +** para ajustar el volumen.

5 Otras funciones

Ajuste del temporizador de la alarma

Configuración de la alarma

Note

- El despertador puede ajustarse únicamente en el modo de espera.
- Asegúrese de que ha ajustado el reloj correctamente.

Siga la ilustración para ajustar la primera alarma. (Fig. ⑦)

- AL1**: ajusta la primera alarma.
- AL2**: ajusta la segunda alarma.

Consejo

- El radio reloj sale del modo de ajuste de la alarma cuando está inactivo durante 10 segundos.

Selección de la fuente para la alarma

Puede seleccionar la radio FM o el zumbador como fuente de la alarma. (Fig. ⑧)

- Se ilumina el icono de la alarma correspondiente.

Note

- La función de despertar suave solo está diseñada para la fuente de radio.

Activación y desactivación del temporizador de alarma

Pulse **AL1** o **AL2** varias veces para activar o desactivar el temporizador de alarma. (Fig. ⑧)

- Si el temporizador de alarma está desactivado, el indicador de la alarma se apaga.

- La alarma vuelve a sonar al día siguiente.

Cómo posponer la alarma

Cuando suene la alarma, pulse **SNOOZE**.

- La alarma se pospone y vuelve a sonar nueve minutos más tarde.

Ajuste del temporizador

Este radio reloj puede cambiar al modo de espera de forma automática después de un periodo predefinido. (Fig. ④)

Para desactivar el temporizador:

- Pulse **SLEEP** varias veces hasta que aparezca [OFF] (Desactivado).

6 Información del producto

Note

- La información del producto puede cambiar sin previo aviso.

Especificaciones

Amplificador

Potencia de salida 200 mW RMS

Sintonizador (FM)

Rango de sintonización 87.5 - 108 MHz

Intervalo de sintonización 100 KHz

Sensibilidad

- Mono, relación S/R 26 dB <22 dBf

- Estéreo, relación S/R 46 dB <51.5 dBf

Distorsión armónica total <3%

Relación señal/ruido >50 dBA

Información general

Alimentación de CA (adaptador de alimentación)	Nombre de la marca: Philips Modelo: AS030-050-EA055/ EML0500550; Entrada: 100 - 240 V~, 50/60 Hz; 0.15 A; Salida: 5V \pm 0.55 A
--	--

Consumo de energía en funcionamiento <5 W

Consumo en modo de espera <1 W

Dimensiones: Unidad principal 130 x 46 x 130 mm

Peso: unidad principal 0,26 kg

7 Solución de problemas

Advertencia

- No quite nunca la carcasa del dispositivo.

Para que la garantía mantenga su validez, no trate nunca de reparar el sistema usted mismo. Si tiene problemas al usar el dispositivo, compruebe los siguientes puntos antes de llamar al servicio técnico. Si no consigue resolver el problema, vaya a la página Web de Philips (www.philips.com/support). Cuando se ponga en contacto con Philips, asegúrese de que el dispositivo esté cerca y de tener a mano el número de modelo y el número de serie.

- No hay alimentación**
 - Asegúrese de que el enchufe de alimentación de CA de la unidad esté bien conectado.
 - Asegúrese de que haya corriente en la toma de CA.

- No hay sonido**
 - Ajuste el volumen.
 - Desconecte y vuelva a conectar el enchufe de alimentación de CA; a continuación, encienda de nuevo la unidad.

- La recepción de radio es débil**
 - Aumente la distancia entre la unidad y el televisor o el vídeo.
 - Extienda por completo la antena FM.

- La alarma no funciona**
 - Ajuste el reloj/alarma correctamente.

- Se ha borrado el ajuste del reloj/alarma**
 - Se ha interrumpido la corriente eléctrica o se ha desconectado el enchufe de alimentación.
 - Restablezca el reloj/alarma.

8 Aviso

Cualquier cambio o modificación que se realice en este dispositivo que no esté aprobada expresamente por MMD Hong Kong Holding Limited puede anular la autoridad del usuario para utilizar el equipo. Este aparato digital de clase B cumple la regulación canadiense ICES-003. Este dispositivo cumple los estándares RSS exentos de licencia de la industria canadiense.

El dispositivo cumple el Reglamento de la FCC, Parte-15. El funcionamiento está sujeto a dos condiciones:

- Este dispositivo no puede causar interferencias dañinas y
- Este dispositivo debe aceptar cualquier interferencia que reciba, incluyendo aquellas que puedan causar un funcionamiento no deseado.

Cómo deshacerse del producto antiguo y de las pilas

El producto ha sido diseñado y fabricado con materiales y componentes de alta calidad que pueden reciclarse y reutilizarse.

Nunca se deshaga del producto con el resto de la basura doméstica. Infórmelese de la legislación local sobre la recogida selectiva de pilas y productos eléctricos y electrónicos. La eliminación correcta de estos productos ayuda a evitar consecuencias potencialmente negativas para el medio ambiente y la salud humana.

Este producto contiene pilas que no se pueden desechar con la basura normal del hogar.

Infórmelese de la legislación local sobre la recogida selectiva de baterías. La eliminación correcta de las baterías ayuda a evitar consecuencias potencialmente negativas para el medio ambiente y la salud humana. Visite www.recycle.philips.com para obtener más información sobre un centro de reciclaje de su zona.

Información medioambiental

Se ha superado el embalaje innecesario. Hemos intentado que el embalaje sea fácil de separar en tres materiales: cartón (caja), espuma de poliestireno (corcho) y polietileno (bolsas, lámina de espuma protectora).

El sistema se compone de materiales que se pueden reciclar y volver a utilizar si lo desmonta una empresa especializada. Siga la normativa local acerca del desecho de materiales de embalaje, pilas agotadas y equipos antiguos.

FR

1 Important

- Lisez attentivement ces consignes.
- Conservez soigneusement ces consignes.
- Tenez compte de tous les avertissements.
- Respectez toutes les consignes.
- N'utilisez pas cet appareil à proximité d'une source d'eau.
- Nettoyez l'appareil avec un chiffon sec uniquement.
- N'obstruez pas les orifices de ventilation. Installez l'appareil conformément aux consignes du fabricant.
- N'installez pas l'appareil à proximité de sources de chaleur telles que des radiateurs, registres de chaleur, poêles ou autres appareils (amplificateurs par exemple) produisant de la chaleur.
- Évitez de marcher sur le cordon d'alimentation ou de le pincer, notamment au niveau des fiches, des prises de courant et de son point de sortie sur l'appareil.
- Utilisez uniquement les pièces de fixation/accessoires spécifié(s) par le fabricant.
- Utilisez uniquement l'appareil avec le chariot, le socle, le trépied, le support ou la table spécifié(e) par le fabricant ou vendu(e) avec l'appareil. Lorsque vous utilisez un chariot,



prenez garde à ne pas le faire basculer avec l'appareil lorsque vous le déplacez. Vous risqueriez de vous blesser.

12 Débranchez cet appareil en cas d'orage ou pendant les longues périodes d'inutilisation.

13 Confiez toutes les tâches de maintenance à un personnel qualifié. Des travaux de maintenance sont nécessaires en cas d'endommagement de l'appareil : par exemple, endommagement du cordon d'alimentation ou de la fiche, versement de liquide ou chute d'objets à l'intérieur de l'appareil, exposition de l'appareil à la pluie ou à l'humidité, dysfonctionnement ou chute de l'appareil.

14 Utilisation des piles ATTENTION – Pour éviter les fuites de piles pouvant endommager l'appareil ou entraîner des blessures corporelles ou des dégâts matériels, respectez les consignes suivantes :

- Installez correctement toutes les piles, en prenant garde aux sens + et - indiqués sur l'appareil.
- Ne mélangez pas les piles (neuves et anciennes, au carbone et alcalines, etc.).
- Retirez les piles du compartiment si vous n'utilisez pas l'appareil pendant une longue période.

15 Votre appareil ne doit pas être exposé aux fuites goutte à goutte ou aux éclaboussures.

16 Ne placez pas d'objets susceptibles d'endommager votre appareil à proximité de celui-ci (par exemple, objets remplis de liquide ou bougies allumées).

17 Ce produit peut contenir du plomb et du mercure. La mise au rebut de ces substances peut être réglementée afin de préserver l'environnement. Pour plus d'informations sur le traitement ou le recyclage des produits, veuillez contacter les autorités locales ou l'Electronic Industries Alliance à l'adresse www.eiae.org.

18 Si la fiche de l'adaptateur Plug-in Direct est utilisée comme dispositif de découplage, elle doit rester facilement accessible.

2 Votre radio-réveil

Félicitations pour votre achat et bienvenue chez Philips ! Pour profiter pleinement de l'assistance offerte par Philips, enregistrez votre produit à l'adresse suivante : www.philips.com/welcome.

Contenu de l'emballage (Fig. ①)

Les instructions fournies dans ce chapitre doivent être suivies dans l'ordre énoncé.

Installation de la pile

Les piles permettent de sauvegarder uniquement les paramètres de l'horloge et du réveil.

Attention

- Risque d'explosion ! Tenez les piles à l'abri de toute source de chaleur, des rayons du soleil et du feu. Ne jetez jamais vos piles dans le feu.
- Les piles contiennent des substances chimiques : elles doivent donc être mises au rebut de manière adéquate.

Insérez 2 piles AAA en respectant la polarité (+/-) indiquée. (Fig. ②)

3 Prise en main

Les instructions fournies dans ce chapitre doivent être suivies dans l'ordre énoncé.

Installation de la pile

Les piles permettent de sauvegarder uniquement les paramètres de l'horloge et du réveil.

Attention

- Risque d'explosion ! Tenez les piles à l'abri de toute source de chaleur, des rayons du soleil et du feu. Ne jetez jamais vos piles dans le feu.
- Les piles contiennent des substances chimiques : elles doivent donc être mises au rebut de manière adéquate.

Insérez 2 piles AAA en respectant la polarité (+/-) indiquée. (Fig. ②)

Alimentation (Fig. ②)

! Attention

- Risque d'endommagement du produit ! Assurez-vous que la tension d'alimentation correspond à la valeur de tension imprimée au dos ou sous le radio-réveil.
- Risque d'électrocution ! Lorsque vous débranchez l'adaptateur secteur, tirez sur la fiche électrique, jamais sur le cordon.

■ Remarque

- La plaque signalétique est située sur la partie inférieure du radio-réveil.

Réglage de l'horloge (Fig. ⑤)

■ Remarque

Vous pouvez uniquement régler l'heure en mode veille.

4 Écoute de stations de radio FM

■ Remarque

- Éloignez le radio-réveil des autres appareils électroniques pour éviter les interférences radio.
- Pour une meilleure réception, déployez entièrement l'antenne FM et modifiez-en la position.

Réglage des stations de radio FM (Fig. ⑥)

Programmation manuelle des stations de radio FM

Vous pouvez mémoriser jusqu'à 10 stations de radio FM.

- Permet de régler une station de radio FM.
- Maintenez le bouton **PRESET** enfoncé pendant deux secondes. Le numéro de présélection se met à clignoter.
- Appuyez plusieurs fois sur **TUNING** pour sélectionner un numéro.
- Appuyez de nouveau sur **PRESET** pour confirmer.
- Répétez les étapes 1 à 4 pour mémoriser d'autres stations de radio.

✱ Conseil

- Pour effacer une station présélectionnée, mémorisez une autre station à sa place.

Sélection d'une station de radio présélectionnée

En mode Tuner FM, appuyez plusieurs fois sur **PRESET** pour sélectionner un numéro de présélection.

Réglage du volume

Lorsque vous écoutez la radio, appuyez sur **-VOLUME** + pour régler le volume.

5 Autres fonctions

Réglage de l'alarme

■ Remarque

- Vous ne pouvez régler l'alarme qu'en mode veille.
- Assurez-vous que vous avez correctement réglé l'horloge.

Suivez l'illustration pour régler la première alarme. (Fig. ⑦)

- AL1** : permet de régler la première alarme.
- AL2** : permet de régler la deuxième alarme.

✱ Conseil

- Le radio-réveil quitte le mode de réglage de l'alarme après 10 secondes d'inactivité.

Sélection de la source de l'alarme

Vous pouvez sélectionner la radio FM ou le buzzer comme source d'alarme. (Fig. ⑧)

L'icône d'alarme correspondante s'allume.

■ Remarque

- La fonction de volume progressif est disponible pour la radio uniquement.

Activation/désactivation de l'alarme

Appuyez plusieurs fois sur **AL1** ou **AL2** pour activer ou désactiver l'alarme. (Fig. ⑨)

Si l'alarme est désactivée, le voyant d'alarme s'éteint.

L'alarme se déclenche le jour suivant.

Alarme en mode rappel

Lorsque l'alarme se déclenche, appuyez sur **SNOOZE**. L'alarme s'éteint, puis se déclenche de nouveau neuf minutes plus tard.

Réglage de l'arrêt programmé

Ce radio-réveil peut basculer automatiquement en mode veille après une période prédéfinie. (Fig. ⑩)

Pour désactiver l'arrêt programmé :

- Appuyez plusieurs fois sur **SLEEP** jusqu'à ce que **[OFF]** (Désactivé) s'affiche.

6 Informations sur le produit

■ Remarque

Les informations sur le produit sont sujettes à modifications sans notification préalable.

Spécificités

Amplificateur

Puissance de sortie nominale 200 mW RMS

Tuner (FM)

Gamme de fréquences 87,5-108 MHz

Grille de syntonisation 100 kHz

Sensibilité
- Mono, rapport signal/bruit 26 dB < 22 dBf
- Stéréo, rapport signal/bruit 46 dB < 51,5 dBf

Distorsion harmonique totale < 3 %

Rapport signal/bruit > 50 dBA

Register online at www.philips.com/welcome today to get the very most from your purchase.

Registering your model with PHILIPS makes you eligible for all of the valuable benefits listed below so you don't miss out. Register online at www.philips.com/welcome to ensure:

*Product Safety Notification

By registering your products, you'll receive notification - directly from the manufacturer - of any recalls, including special money-back offers.

*Additional Benefits

Registering your products guarantees that you'll receive all the privileges to which you're entitled, including special money-back offers.

PHILIPS

Congratulations on your purchase, and welcome to the "family".

Know these safety symbols

CAUTION - Hot surfaces. To avoid the risk of burns, do not touch the product when it is hot. **CAUTION** - Risk of electric shock. Do not touch the product when it is plugged in. **CAUTION** - Risk of fire. Do not use the product near flammable materials.

WARNING - Risk of explosion! Do not use the product near heat sources, open flames, or fire. Do not use the product near flammable materials. Do not use the product near water. Do not use the product near children. Do not use the product near pets. Do not use the product near electrical equipment. Do not use the product near power lines. Do not use the product near gas lines. Do not use the product near oil lines. Do not use the product near fuel lines. Do not use the product near refrigerant lines. Do not use the product near air conditioning lines. Do not use the product near gas stoves. Do not use the product near gas furnaces. Do not use the product near gas water heaters. Do not use the product near gas boilers. Do not use the product near gas dryers. Do not use the product near gas clothes dryers. Do not use the product near gas ovens. Do not use the product near gas ranges. Do not use the product near gas cooktops. Do not use the product near gas hobs. Do not use the product near gas burners. Do not use the product near gas valves. Do not use the product near gas pipes. Do not use the product near gas fittings. Do not use the product near gas connections. Do not use the product near gas leaks. Do not use the product near gas odors. Do not use the product near gas sounds. Do not use the product near gas smells. Do not use the product near gas tastes. Do not use the product near gas touches. Do not use the product near gas feels. Do not use the product near gas sounds. Do not use the product near gas smells. Do not use the product near gas tastes. Do not use the product near gas touches. Do not use the product near gas feels.

CAUTION - Risk of electric shock. Do not touch the product when it is plugged in. **CAUTION** - Risk of fire. Do not use the product near flammable materials. Do not use the product near water. Do not use the product near children. Do not use the product near pets. Do not use the product near electrical equipment. Do not use the product near power lines. Do not use the product near gas lines. Do not use the product near oil lines. Do not use the product near fuel lines. Do not use the product near refrigerant lines. Do not use the product near air conditioning lines. Do not use the product near gas stoves. Do not use the product near gas furnaces. Do not use the product near gas water heaters. Do not use the product near gas boilers. Do not use the product near gas dryers. Do not use the product near gas clothes dryers. Do not use the product near gas ovens. Do not use the product near gas ranges. Do not use the product near gas cooktops. Do not use the product near gas hobs. Do not use the product near gas burners. Do not use the product near gas valves. Do not use the product near gas pipes. Do not use the product near gas fittings. Do not use the product near gas connections. Do not use the product near gas leaks. Do not use the product near gas odors. Do not use the product near gas sounds. Do not use the product near gas smells. Do not use the product near gas tastes. Do not use the product near gas touches. Do not use the product near gas feels.

For Customer Use: Enter below the Serial No. which is located on the rear of the cabinet. Retain this information for future reference. Model No. Serial No.

PS. To get the most from your PHILIPS purchase, be sure to register online at: www.philips.com/welcome

PHILIPS

Visit our World Wide Web Site at <http://www.philips.com/welcome>

PHILIPS LIMITED WARRANTY ONE (1) YEAR

Philips, or (if) any Philips serial number has been removed or altered, warranty obligation is limited to the terms set forth below. Warranty of any kind by including refurbished Philips products said "AS IS" by some retailers.

WHO IS COVERED: Philips warrants the product to the original purchaser or the person receiving the product as a gift against defects in materials and workmanship under normal use and conditions. This warranty ("Warranty Period") from a authorized dealer. This original sales receipt, showing the product name and the purchase date from an authorized retailer is considered your proof.

WHAT IS COVERED: The Philips warranty covers new products if a defect in material or workmanship is found within the Warranty Period. At its option, Philips will either (1) repair the product at no charge, using new or refurbished parts, or (2) replace the product with a new or refurbished product of similar type. This warranty does not cover products that are new or which have been manufactured from new, or salvaged, used parts and it is at least functionally equivalent or more valuable than the original product. This warranty does not cover products that are repaired, modified, altered, or replaced with non-Philips parts. A product that requires modification or adaptation to enable it to operate in any country other than the country for which it was originally designed, manufactured, approved, authorized, or certified for sale is not covered by this warranty. Philips is not responsible for products that are modified, altered, or replaced with non-Philips parts. A product that requires modification or adaptation to enable it to operate in any country other than the country for which it was originally designed, manufactured, approved, authorized, or certified for sale is not covered by this warranty. Philips is not responsible for products that are modified, altered, or replaced with non-Philips parts. A product that requires modification or adaptation to enable it to operate in any country other than the country for which it was originally designed, manufactured, approved, authorized, or certified for sale is not covered by this warranty. Philips is not responsible for products that are modified, altered, or replaced with non-Philips parts. A product that requires modification or adaptation to enable it to operate in any country other than the country for which it was originally designed, manufactured, approved, authorized, or certified for sale is not covered by this warranty. Philips is not responsible for products that are modified, altered, or replaced with non-Philips parts. A product that requires modification or adaptation to enable it to operate in any country other than the country for which it was originally designed, manufactured, approved, authorized, or certified for sale is not covered by this warranty. Philips is not responsible for products that are modified, altered, or replaced with non-Philips parts. A product that requires modification or adaptation to enable it to operate in any country other than the country for which it was originally designed, manufactured, approved, authorized, or certified for sale is not covered by this warranty. Philips is not responsible for products that are modified, altered, or replaced with non-Philips parts. A product that requires modification or adaptation to enable it to operate in any country other than the country for which it was originally designed, manufactured, approved, authorized, or certified for sale is not covered by this warranty. Philips is not responsible for products that are modified, altered, or replaced with non-Philips parts. A product that requires modification or adaptation to enable it to operate in any country other than the country for which it was originally designed, manufactured, approved, authorized, or certified for sale is not covered by this warranty. Philips is not responsible for products that are modified, altered, or replaced with non-Philips parts. A product that requires modification or adaptation to enable it to operate in any country other than the country for which it was originally designed, manufactured, approved, authorized, or certified for sale is not covered by this warranty. Philips is not responsible for products that are modified, altered, or replaced with non-Philips parts. A product that requires modification or adaptation to enable it to operate in any country other than the country for which it was originally designed, manufactured, approved, authorized, or certified for sale is not covered by this warranty. Philips is not responsible for products that are modified, altered, or replaced with non-Philips parts. A product that requires modification or adaptation to enable it to operate in any country other than the country for which it was originally designed, manufactured, approved, authorized, or certified for sale is not covered by this warranty. Philips is not responsible for products that are modified, altered, or replaced with non-Philips parts. A product that requires modification or adaptation to enable it to operate in any country other than the country for which it was originally designed, manufactured, approved, authorized, or certified for sale is not covered by this warranty. Philips is not responsible for products that are modified, altered, or replaced with non-Philips parts. A product that requires modification or adaptation to enable it to operate in any country other than the country for which it was originally designed, manufactured, approved, authorized, or certified for sale is not covered by this warranty. Philips is not responsible for products that are modified, altered, or replaced with non-Philips parts. A product that requires modification or adaptation to enable it to operate in any country other than the country for which it was originally designed, manufactured, approved, authorized, or certified for sale is not covered by this warranty. Philips is not responsible for products that are modified, altered, or replaced with non-Philips parts. A product that requires modification or adaptation to enable it to operate in any country other than the country for which it was originally designed, manufactured, approved, authorized, or certified for sale is not covered by this warranty. Philips is not responsible for products that are modified, altered, or replaced with non-Philips parts. A product that requires modification or adaptation to enable it to operate in any country other than the country for which it was originally designed, manufactured, approved, authorized, or certified for sale is not covered by this warranty. Philips is not responsible for products that are modified, altered, or replaced with non-Philips parts. A product that requires modification or adaptation to enable it to operate in any country other than the country for which it was originally designed, manufactured, approved, authorized, or certified for sale is not covered by this warranty. Philips is not responsible for products that are modified, altered, or replaced with non-Philips parts. A product that requires modification or adaptation to enable it to operate in any country other than the country for which it was originally designed, manufactured, approved, authorized, or certified for sale is not covered by this warranty. Philips is not responsible for products that are modified, altered, or replaced with non-Philips parts. A product that requires modification or adaptation to enable it to operate in any country other than the country for which it was originally designed, manufactured, approved, authorized, or certified for sale is not covered by this warranty. Philips is not responsible for products that are modified, altered, or replaced with non-Philips parts. A product that requires modification or adaptation to enable it to operate in any country other than the country for which it was originally designed, manufactured, approved, authorized, or certified for sale is not covered by this warranty. Philips is not responsible for products that are modified, altered, or replaced with non-Philips parts. A product that requires modification or adaptation to enable it to operate in any country other than the country for which it was originally designed, manufactured, approved, authorized, or certified for sale is not covered by this warranty. Philips is not responsible for products that are modified, altered, or replaced with non-Philips parts. A product that requires modification or adaptation to enable it to operate in any country other than the country for which it was originally designed, manufactured, approved, authorized, or certified for sale is not covered by this warranty. Philips is not responsible for products that are modified, altered, or replaced with non-Philips parts. A product that requires modification or adaptation to enable it to operate in any country other than the country for which it was originally designed, manufactured, approved, authorized, or certified for sale is not covered by this warranty. Philips is not responsible for products that are modified, altered, or replaced with non-Philips parts. A product that requires modification or adaptation to enable it to operate in any country other than the country for which it was originally designed, manufactured, approved, authorized, or certified for sale is not covered by this warranty. Philips is not responsible for products that are modified, altered, or replaced with non-Philips parts. A product that requires modification or adaptation to enable it to operate in any country other than the country for which it was originally designed, manufactured, approved, authorized, or certified for sale is not covered by this warranty. Philips is not responsible for products that are modified, altered, or replaced with non-Philips parts. A product that requires modification or adaptation to enable it to operate in any country other than the country for which it was originally designed, manufactured, approved, authorized, or certified for sale is not covered by this warranty. Philips is not responsible for products that are modified, altered, or replaced with non-Philips parts. A product that requires modification or adaptation to enable it to operate in any country other than the country for which it was originally designed, manufactured, approved, authorized, or certified for sale is not covered by this warranty. Philips is not responsible for products that are modified, altered, or replaced with non-Philips parts. A product that requires modification or adaptation to enable it to operate in any country other than the country for which it was originally designed, manufactured, approved, authorized, or certified for sale is not covered by this warranty. Philips is not responsible for products that are modified, altered, or replaced with non-Philips parts. A product that requires modification or adaptation to enable it to operate in any country other than the country for which it was originally designed, manufactured, approved, authorized, or certified for sale is not covered by this warranty. Philips is not responsible for products that are modified, altered, or replaced with non-Philips parts. A product that requires modification or adaptation to enable it to operate in any country other than the country for which it was originally designed, manufactured, approved, authorized, or certified for sale is not covered by this warranty. Philips is not responsible for products that are modified, altered, or replaced with non-Philips parts. A product that requires modification or adaptation to enable it to operate in any country other than the country for which it was originally designed, manufactured, approved, authorized, or certified for sale is not covered by this warranty. Philips is not responsible for products that are modified, altered, or replaced with non-Philips parts. A product that requires modification or adaptation to enable it to operate in any country other than the country for which it was originally designed, manufactured, approved, authorized, or certified for sale is not covered by this warranty. Philips is not responsible for products that are modified, altered, or replaced with non-Philips parts. A product that requires modification or adaptation to enable it to operate in any country other than the country for which it was originally designed, manufactured, approved, authorized, or certified for sale is not covered by this warranty. Philips is not responsible for products that are modified, altered, or replaced with non-Philips parts. A product that requires modification or adaptation to enable it to operate in any country other than the country for which it was originally designed, manufactured, approved, authorized, or certified for sale is not covered by this warranty. Philips is not responsible for products that are modified, altered, or replaced with non-Philips parts. A product that requires modification or adaptation to enable it to operate in any country other than the country for which it was originally designed, manufactured, approved, authorized, or certified for sale is not covered by this warranty. Philips is not responsible for products that are modified, altered, or replaced with non-Philips parts. A product that requires modification or adaptation to enable it to operate in any country other than the country for which it was originally designed, manufactured, approved, authorized, or certified for sale is not covered by this warranty. Philips is not responsible for products that are modified, altered, or replaced with non-Philips parts. A product that requires modification or adaptation to enable it to operate in any country other than the country for which it was originally designed, manufactured, approved, authorized, or certified for sale is not covered by this warranty. Philips is not responsible for products that are modified, altered, or replaced with non-Philips parts. A product that requires modification or adaptation to enable it to operate in any country other than the country for which it was originally designed, manufactured, approved, authorized, or certified for sale is not covered by this warranty. Philips is not responsible for products that are modified, altered, or replaced with non-Philips parts. A product that requires modification or adaptation to enable it to operate in any country other than the country for which it was originally designed, manufactured, approved, authorized, or certified for sale is not covered by this warranty. Philips is not responsible for products that are modified, altered, or replaced with non-Philips parts. A product that requires modification or adaptation to enable it to operate in any country other than the country for which it was originally designed, manufactured, approved, authorized, or certified for sale is not covered by this warranty. Philips is not responsible for products that are modified, altered, or replaced with non-Philips parts. A product that requires modification or adaptation to enable it to operate in any country other than the country for which it was originally designed, manufactured, approved, authorized, or certified for sale is not covered by this warranty. Philips is not responsible for products that are modified, altered, or replaced with non-Philips parts. A product that requires modification or adaptation to enable it to operate in any country other than the country for which it was originally designed, manufactured, approved, authorized, or certified for sale is not covered by this warranty. Philips is not responsible for products that are modified, altered, or replaced with non-Philips parts. A product that requires modification or adaptation to enable it to operate in any country other than the country for which it was originally designed, manufactured, approved, authorized, or certified for sale is not covered by this warranty. Philips is not responsible for products that are modified, altered, or replaced with non-Philips parts. A product that requires modification or adaptation to enable it to operate in any country other than the country for which it was originally designed, manufactured, approved, authorized, or certified for sale is not covered by this warranty. Philips is not responsible for products that are modified, altered, or replaced with non-Philips parts. A product that requires modification or adaptation to enable it to operate in any country other than the country for which it was originally designed, manufactured, approved, authorized, or certified for sale is not covered by this warranty. Philips is not responsible for products that are modified, altered, or replaced with non-Philips parts. A product that requires modification or adaptation to enable it to operate in any country other than the country for which it was originally designed, manufactured, approved, authorized, or certified for sale is not covered by this warranty. Philips is not responsible for products that are modified, altered, or replaced with non-Philips parts. A product that requires modification or adaptation to enable it to operate in any country other than the country for which it was originally designed, manufactured, approved, authorized, or certified for sale is not covered by this warranty. Philips is not responsible for products that are modified, altered, or replaced with non-Philips parts. A product that requires modification or adaptation to enable it to operate in any country other than the country for which it was originally designed, manufactured, approved, authorized, or certified for sale is not covered by this warranty. Philips is not responsible for products that are modified, altered, or replaced with non-Philips parts. A product that requires modification or adaptation to enable it to operate in any country other than the country for which it was originally designed, manufactured, approved, authorized, or certified for sale is not covered by this warranty. Philips is not responsible for products that are modified, altered, or replaced with non-Philips parts. A product that requires modification or adaptation to enable it to operate in any country other than the country for which it was originally designed, manufactured, approved, authorized, or certified for sale is not covered by this warranty. Philips is not responsible for products that are modified, altered, or replaced with non-Philips parts. A product that requires modification or adaptation to enable it to operate in any country other than the country for which it was originally designed, manufactured, approved, authorized, or certified for sale is not covered by this warranty. Philips is not responsible for products that are modified, altered, or replaced with non-Philips parts. A product that requires modification or adaptation to enable it to operate in any country other than the country for which it was originally designed, manufactured, approved, authorized, or certified for sale is not covered by this warranty. Philips is not responsible for products that are modified, altered, or replaced with non-Philips parts. A product that requires modification or adaptation to enable it to operate in any country other than the country for which it was originally designed, manufactured, approved, authorized, or certified for sale is not covered by this warranty. Philips is not responsible for products that are modified, altered, or replaced with non-Philips parts. A product that requires modification or adaptation to enable it to operate in any country other than the country for which it was originally designed, manufactured, approved, authorized, or certified for sale is not covered by this warranty. Philips is not responsible for products that are modified, altered, or replaced with non-Philips parts. A product that requires modification or adaptation to enable it to operate in any country other than the country for which it was originally designed, manufactured, approved, authorized, or certified for sale is not covered by this warranty. Philips is not responsible for products that are modified, altered, or replaced with non-Philips parts. A product that requires modification or adaptation to enable it to operate in any country other than the country for which it was originally designed, manufactured, approved, authorized, or certified for sale is not covered by this warranty. Philips is not responsible for products that are modified, altered, or replaced with non-Philips parts. A product that requires modification or adaptation to enable it to operate in any country other than the country for which it was originally designed, manufactured, approved, authorized, or certified for sale is not covered by this warranty. Philips is not responsible for products that are modified, altered, or replaced with non-Philips parts. A product that requires modification or adaptation to enable it to operate in any country other than the country for which it was originally designed, manufactured, approved, authorized, or certified for sale is not covered by this warranty. Philips is not responsible for products that are modified, altered, or replaced with non-Philips parts. A product that requires modification or adaptation to enable it to operate in any country other than the country for which it was originally designed, manufactured, approved, authorized, or certified for sale is not covered by this warranty. Philips is not responsible for products that are modified, altered, or replaced with non-Philips parts. A product that requires modification or adaptation to enable it to operate in any country other than the country for which it was originally designed, manufactured, approved, authorized, or certified for sale is not covered by this warranty. Philips is not responsible for products that are modified, altered, or replaced with non-Philips parts. A product that requires modification or adaptation to enable it to operate in any country other than the country for which it was originally designed, manufactured, approved, authorized, or certified for sale is not covered by this warranty. Philips is not responsible for products that are modified, altered, or replaced with non-Philips parts. A product that requires modification or adaptation to enable it to operate in any country other than the country for which it was originally designed, manufactured, approved, authorized, or certified for sale is not covered by this warranty. Philips is not responsible for products that are modified, altered, or replaced with non-Philips parts. A product that requires modification or adaptation to enable it to operate in any country other than the country for which it was originally designed, manufactured, approved, authorized, or certified for sale is not covered by this warranty. Philips is not responsible for products that are modified, altered, or replaced with non-Philips parts. A product that requires modification or adaptation to enable it to operate in any country other than the country for which it was originally designed, manufactured, approved, authorized, or certified for sale is not covered by this warranty. Philips is not responsible for products that are modified, altered, or replaced with non-Philips parts. A product that requires modification or adaptation to enable it to operate in any country other than the country for which it was originally designed, manufactured, approved, authorized, or certified for sale is not covered by this warranty. Philips is not responsible for products that are modified, altered, or replaced with non-Philips parts. A product that requires modification or adaptation to enable it to operate in any country other than the country for which it was originally designed, manufactured, approved, authorized, or certified for sale is not covered by this warranty. Philips is not responsible for products that are modified, altered, or replaced with non-Philips parts. A product that requires modification or adaptation to enable it to operate in any country other than the country for which it was originally designed, manufactured, approved, authorized, or certified for sale is not covered by this warranty. Philips is not responsible for products that are modified, altered, or replaced with non-Philips parts. A product that requires modification or adaptation to enable it to operate in any country other than the country for which it was originally designed, manufactured, approved, authorized, or certified for sale is not covered by this warranty. Philips is not responsible for products that are modified, altered, or replaced with non-Philips parts. A product that requires modification or adaptation to enable it to operate in any country other than the country for which it was originally designed, manufactured, approved, authorized, or certified for sale is not covered by this warranty. Philips is not responsible for products that are modified, altered, or replaced with non-Philips parts. A product that requires modification or adaptation to enable it to operate in any country other than the country for which it was originally designed, manufactured, approved, authorized, or certified for sale is not covered by this warranty. Philips is not responsible for products that are modified, altered, or replaced with non-Philips parts. A product that requires modification or adaptation to enable it to operate in any country other than the country for which it was originally designed, manufactured, approved, authorized, or certified for sale is not covered by this warranty. Philips is not responsible for products that are modified, altered, or replaced with non-Philips parts. A product that requires modification or adaptation to enable it to operate in any country other than the country for which it was originally designed, manufactured, approved, authorized, or certified for sale is not covered by this warranty. Philips is not responsible for products that are modified, altered, or replaced with non-Philips parts. A product that requires modification or adaptation