

Register your product and get support at  
Registre seu produto e obtenha assistência em  
[www.philips.com/welcome](http://www.philips.com/welcome)

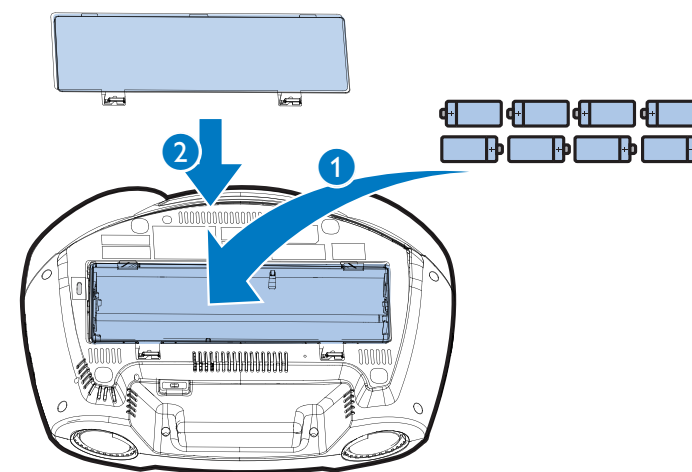
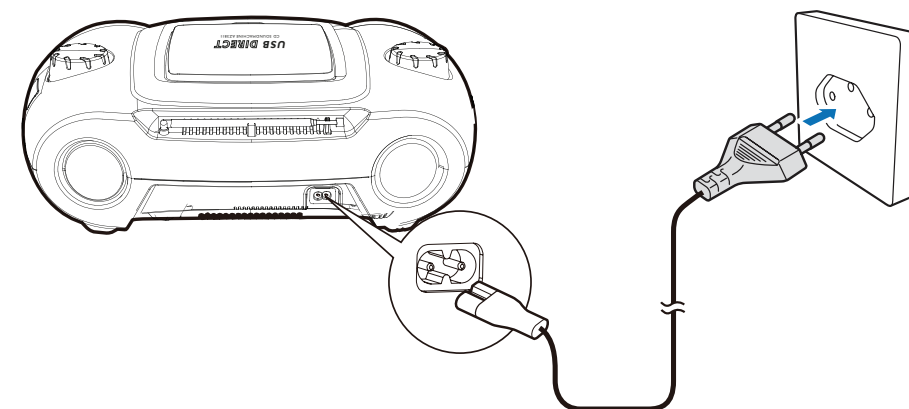
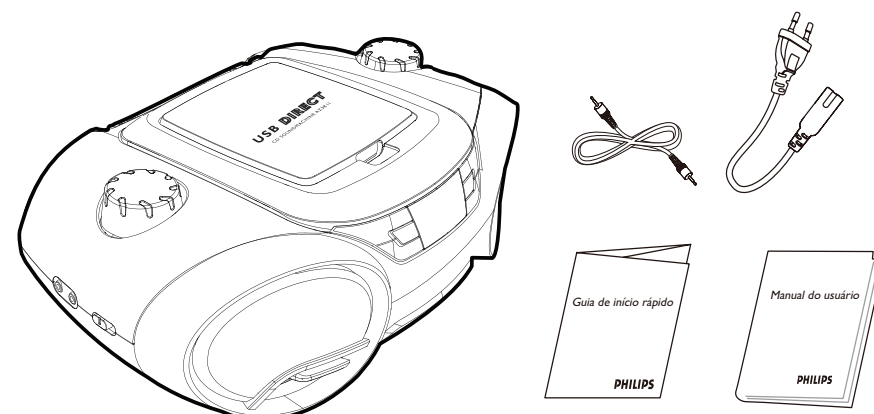
AZ3811

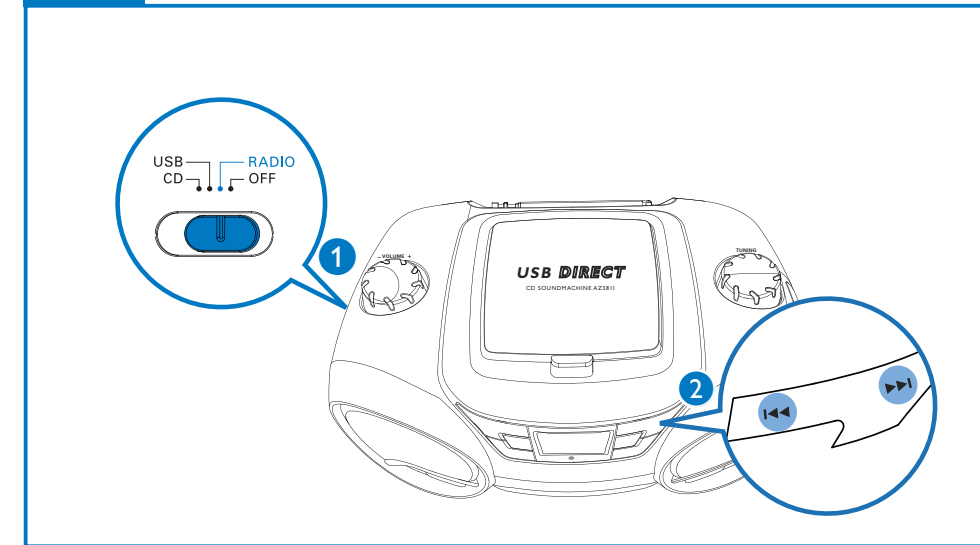
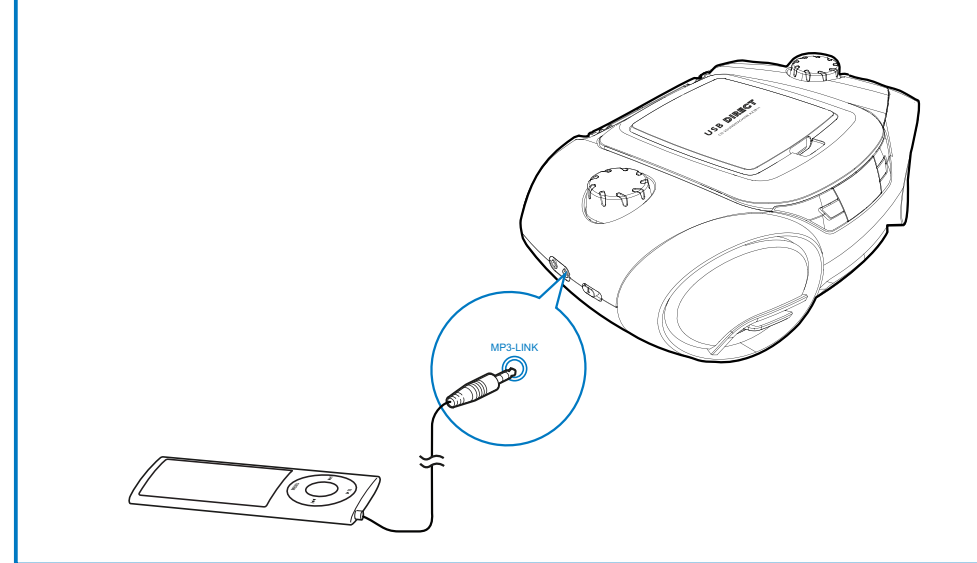
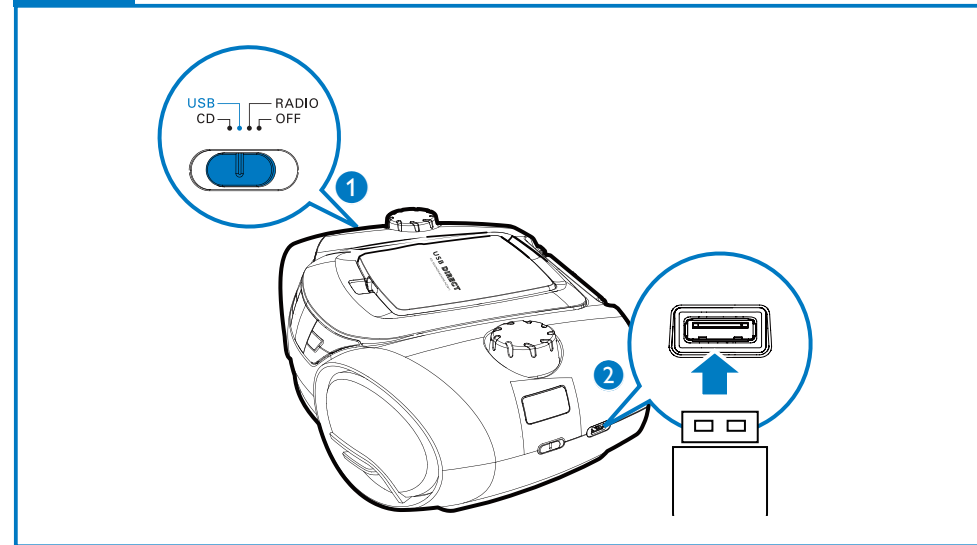
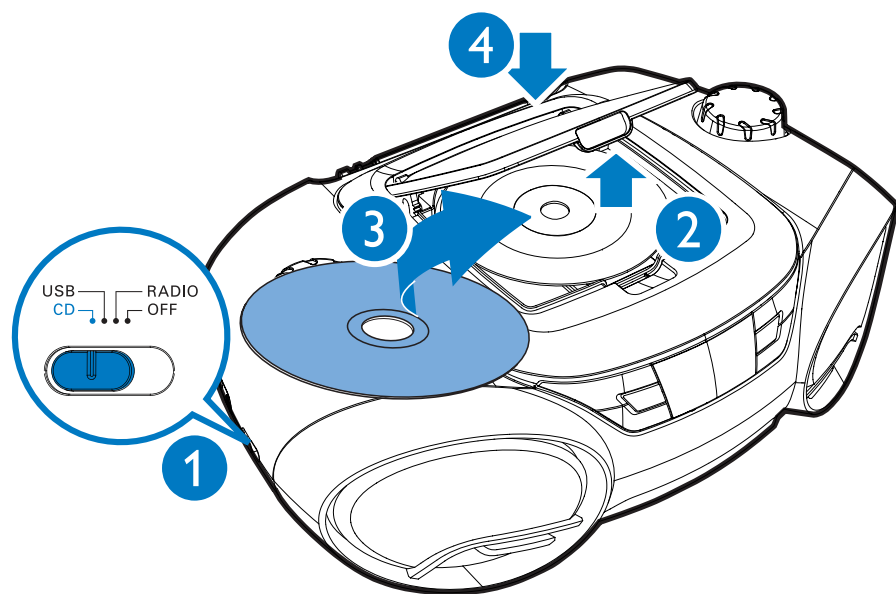
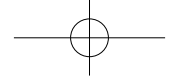


Imagem ilustrativa

Quick start guide  
Guia de início rápido

**PHILIPS**





Evite o uso prolongado do aparelho com volume superior a 85 decibéis, pois isto poderá prejudicar a sua audição  
2014 © WOOX Innovations Limited. All rights reserved.  
This product was brought to the market by WOOX Innovations Limited or one of its affiliates, further referred to in this document as WOOX Innovations, and is the manufacturer of the product. WOOX Innovations is the warrantor in relation to the product with which this booklet was packaged. Philips and the Philips Shield Emblem are registered trademarks of Koninklijke Philips N.V.



AZ3811\_78\_QSG\_V2.0

