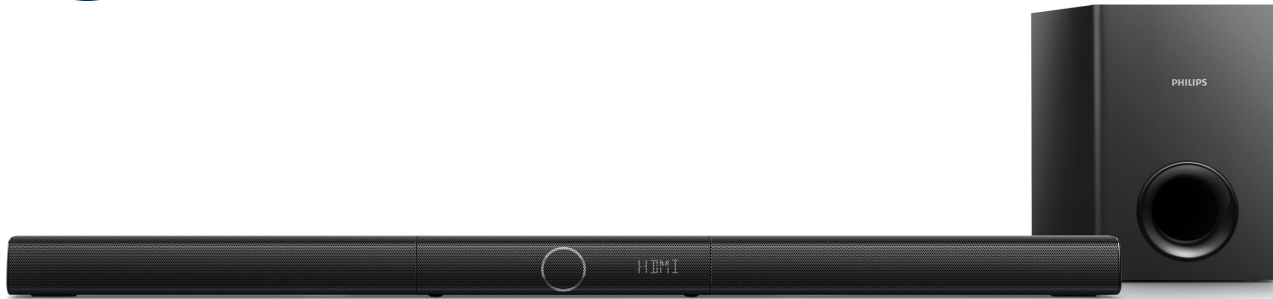


Always there to help you

Register your product and get support at
www.philips.com/support



HTL2193B

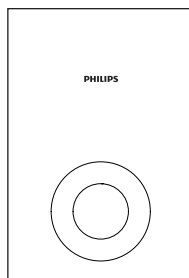


Quick start guide

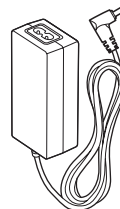
PHILIPS



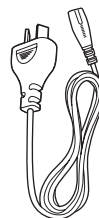
Before using your product, read all accompanying safety information



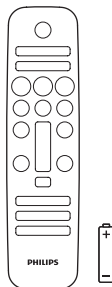
FM Antenna



Power Adapter



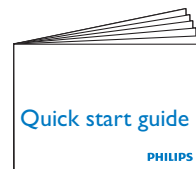
Power Cord



6 X

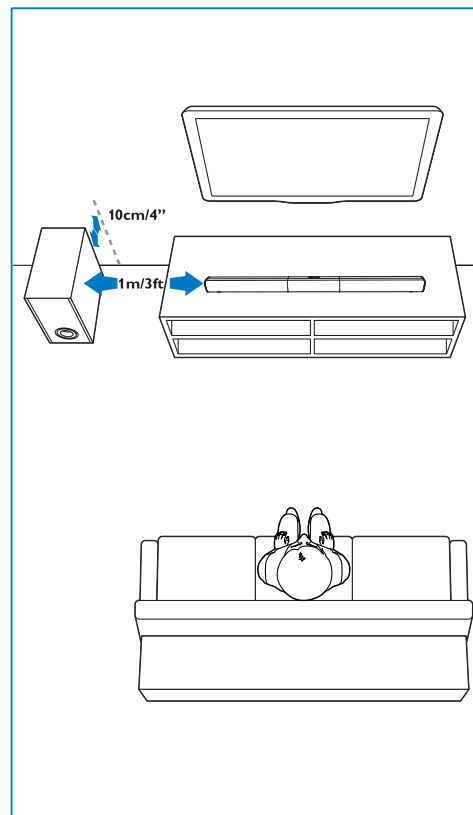
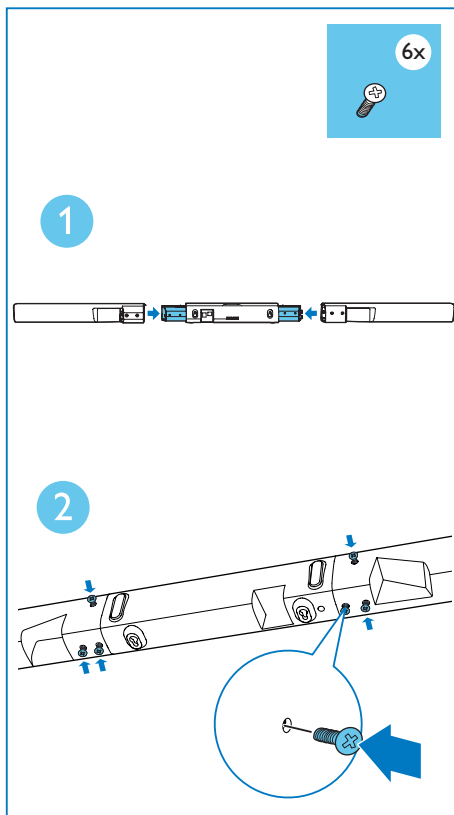


Optical Cable



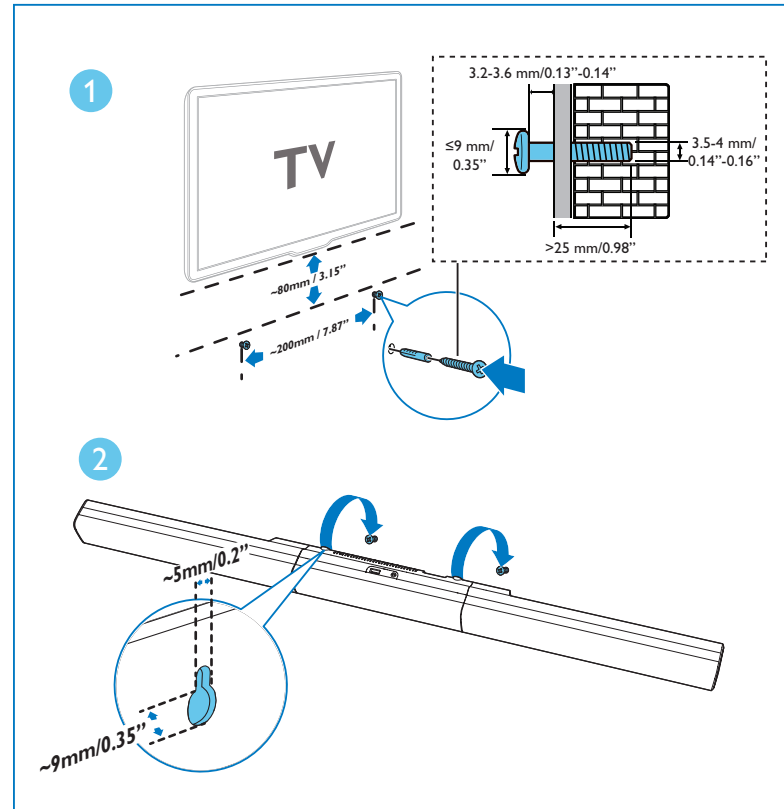
1

Assemble your product /
Position your product



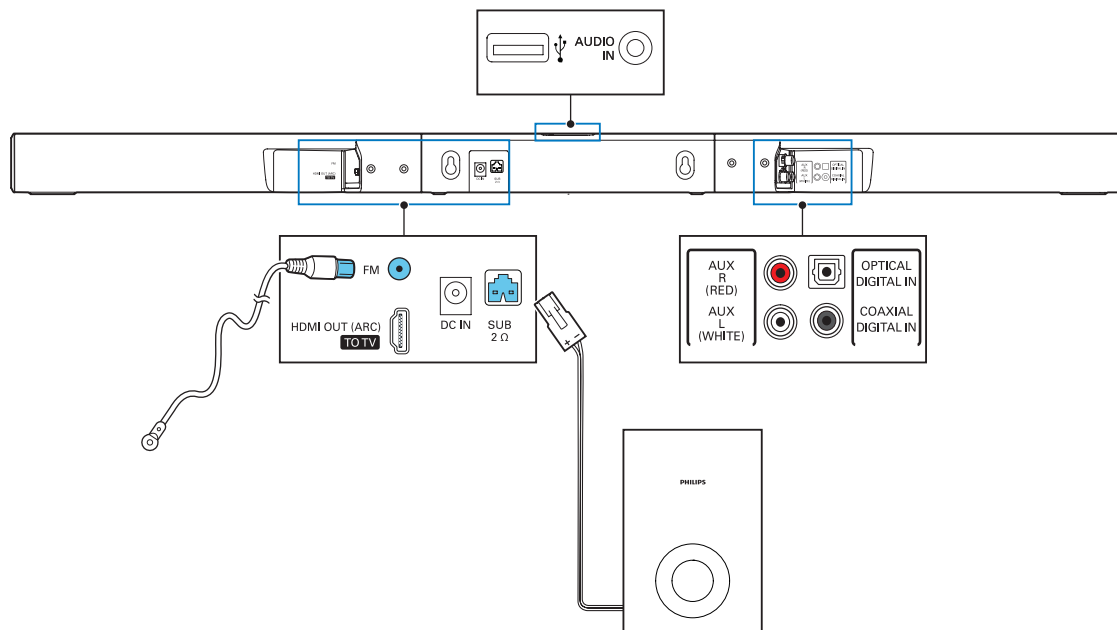


Wall mount your product (optional)



2

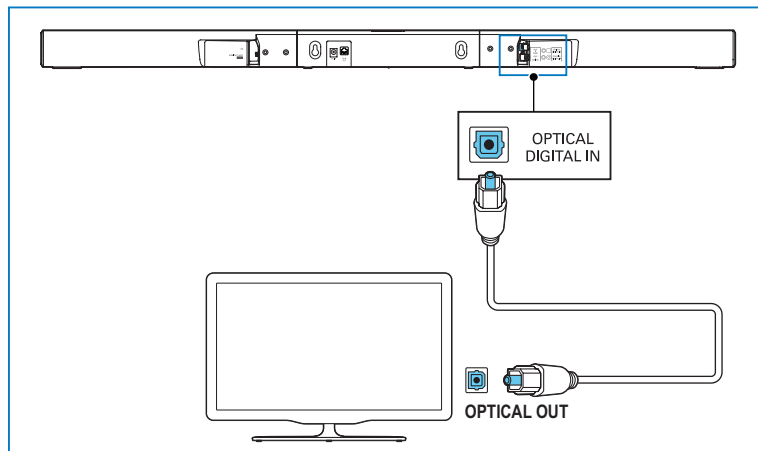
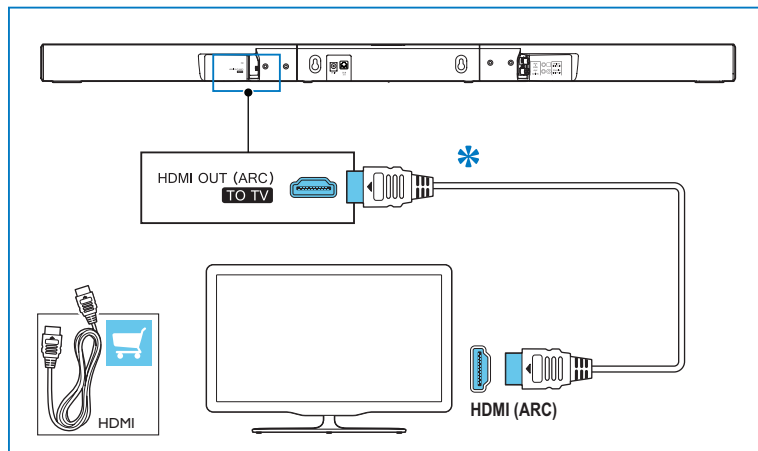
Connect your product

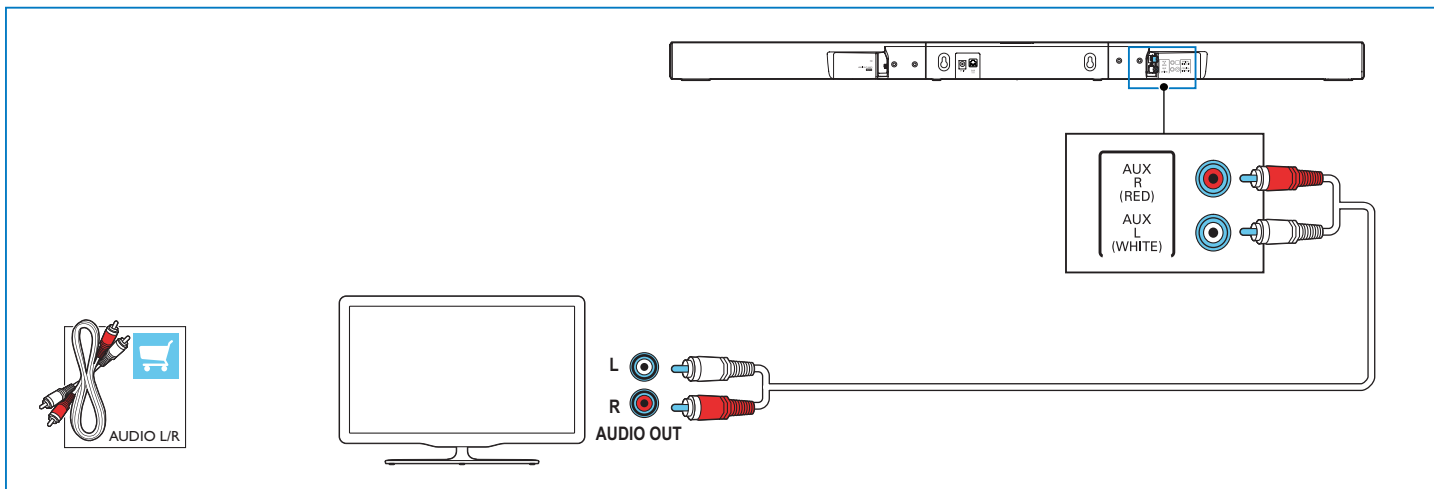
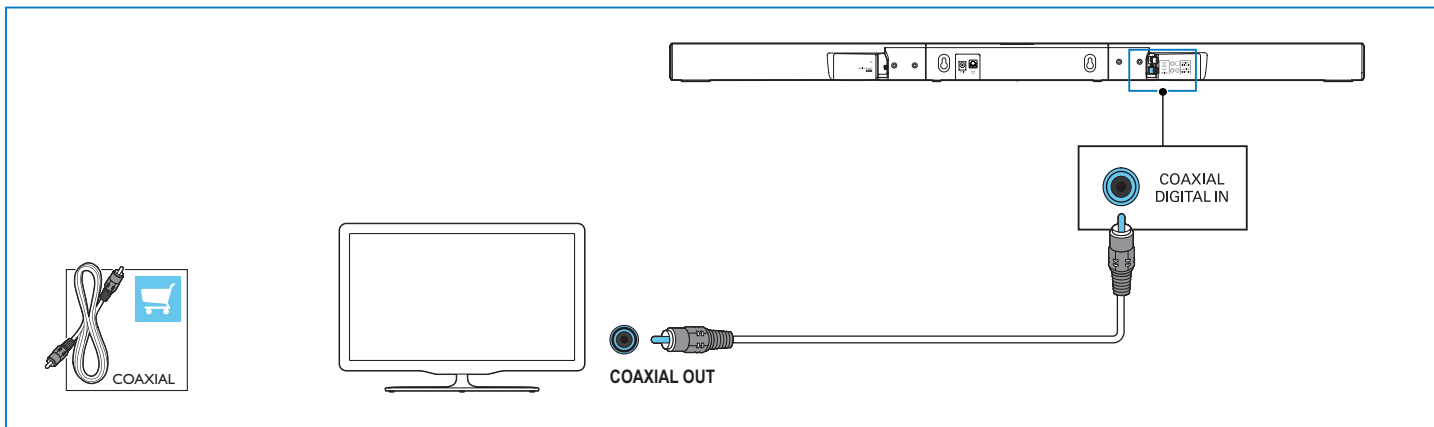


3

Connect to TV in one of these ways

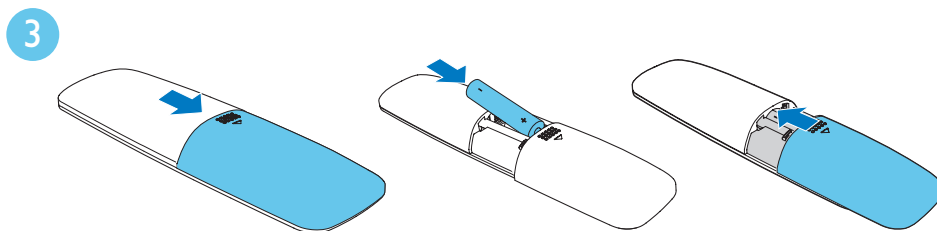
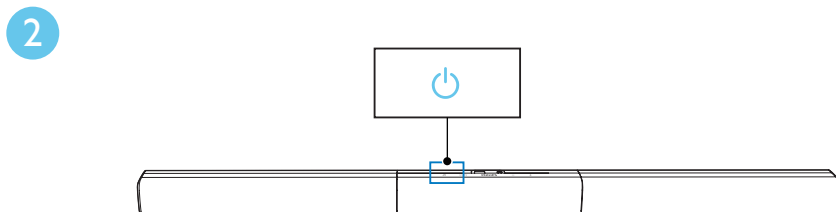
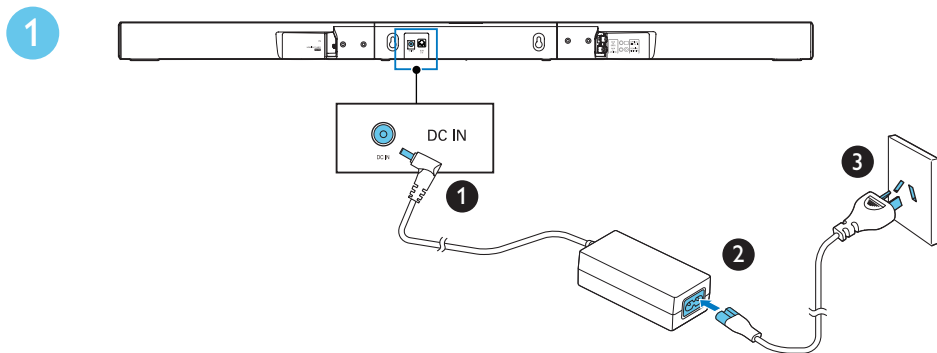
* A High Speed HDMI Cable is required





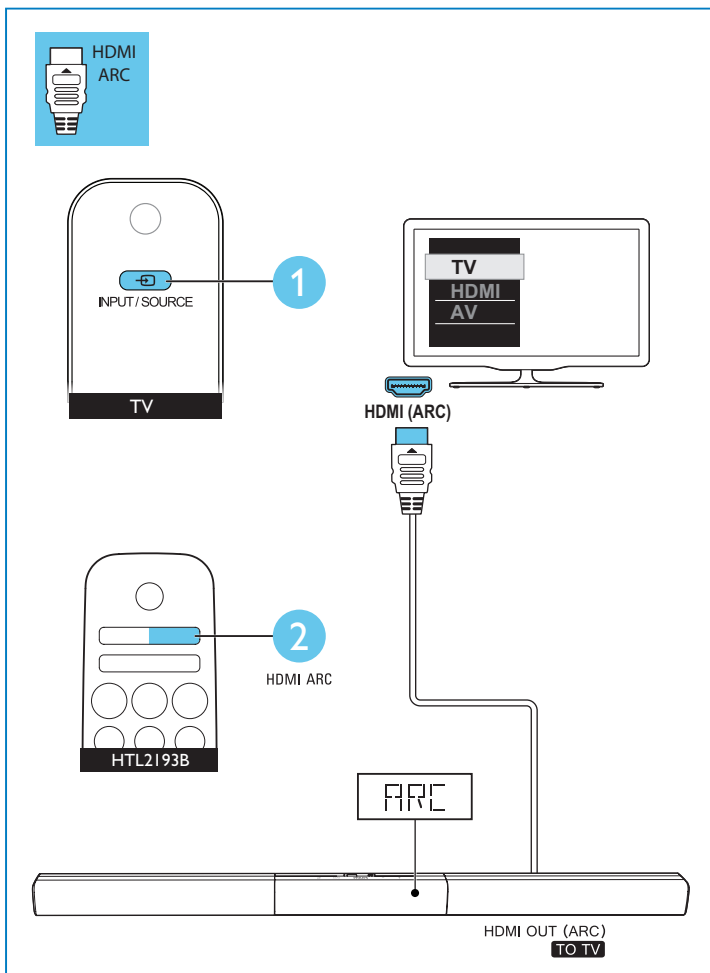
4

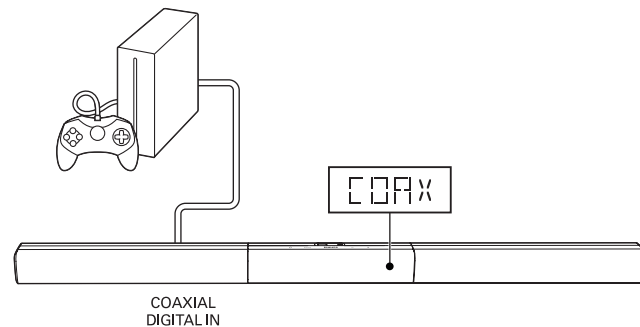
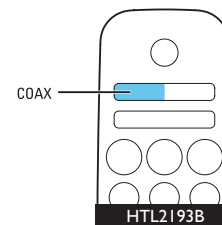
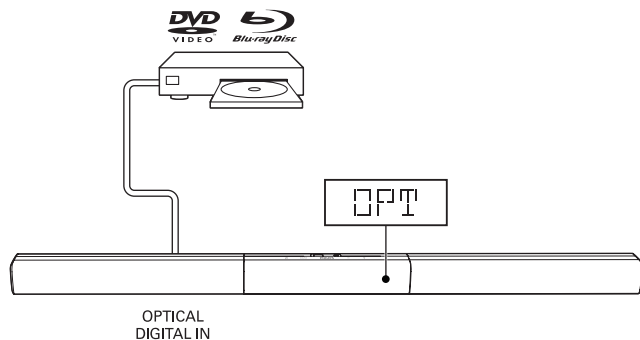
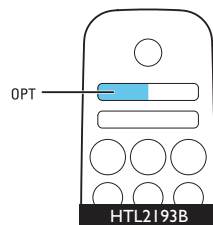
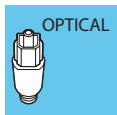
Switch on your product

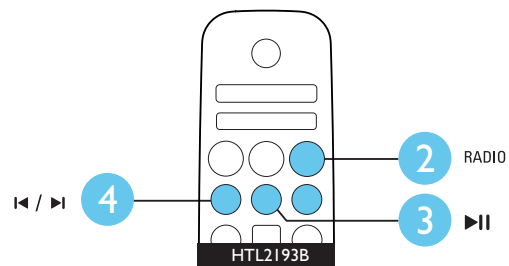
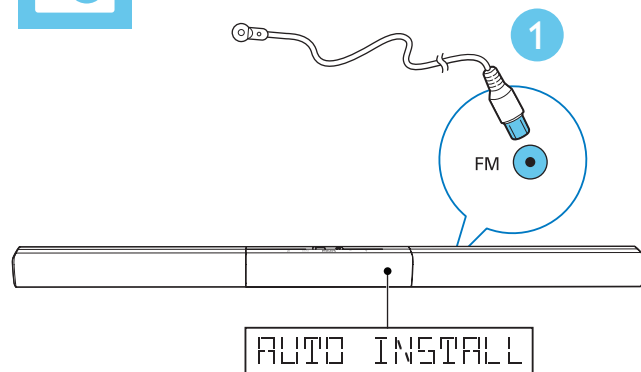
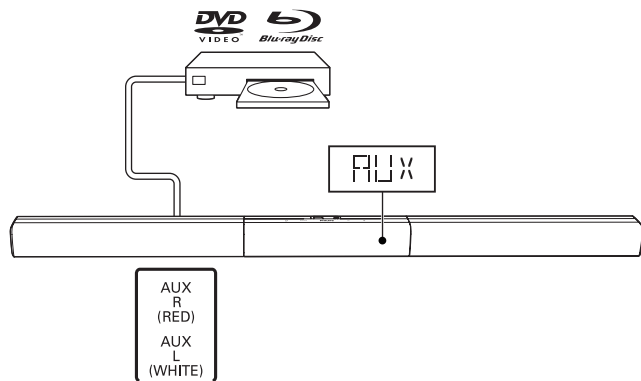
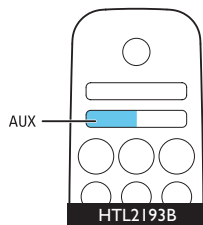
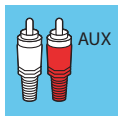


5

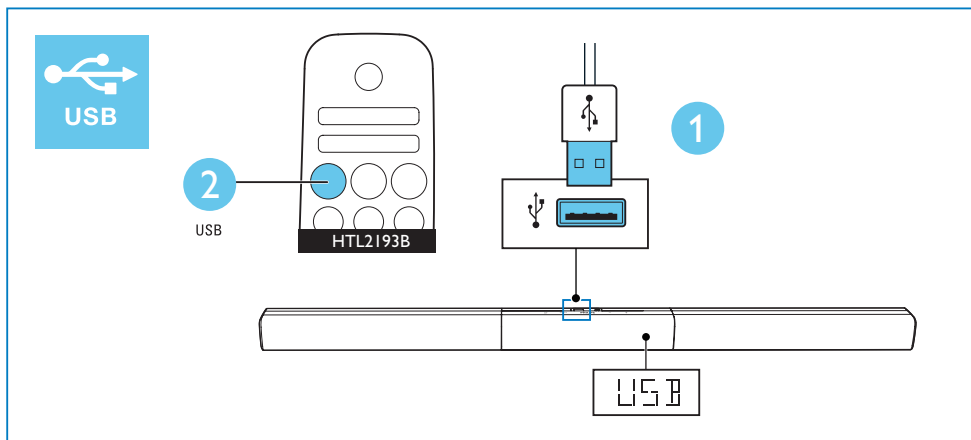
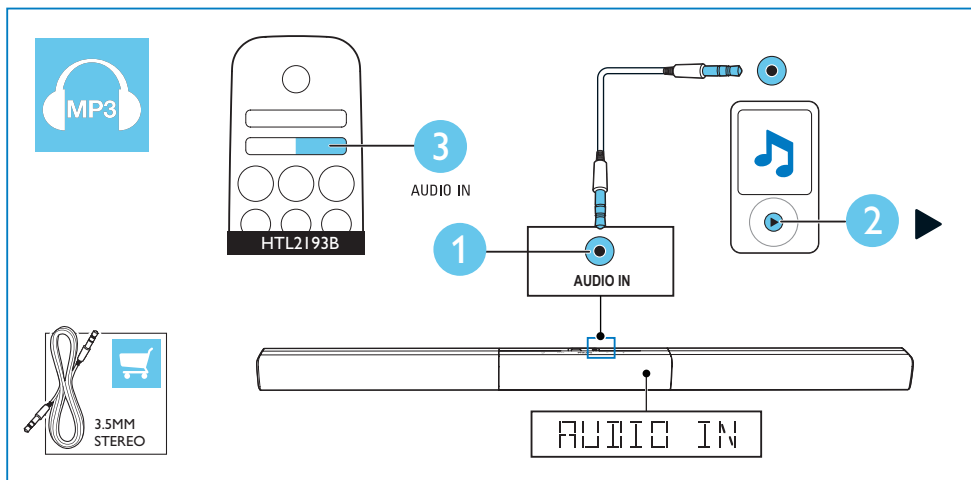
Select the correct audio source





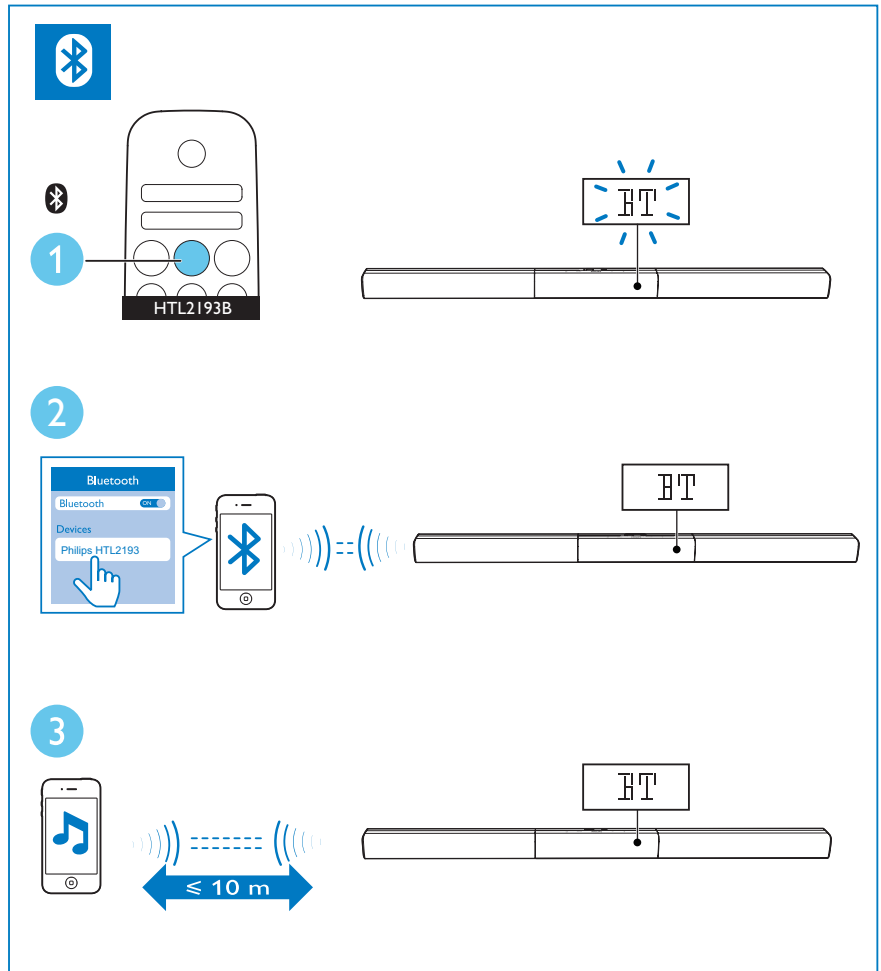


Play other devices



7

Play audio through Bluetooth





For more information about using this product,
visit www.philips.com/support



www.philips.com/support



Manufactured under license from Dolby Laboratories. Dolby, Pro Logic, and the double-D symbol are trademarks of Dolby Laboratories.



The terms HDMI and HDMI High-Definition Multimedia Interface, and the HDMI Logo are trademarks or registered trademarks of HDMI Licensing LLC in the United States and other countries.



The Bluetooth® word mark and logos are registered trademarks owned by Bluetooth SIG, Inc. and any use of such marks by Gibson Innovations Limited is under license. Other trademarks and trade names are those of their respective owners.



Specifications are subject to change without notice

2015 © Gibson Innovations Limited. All rights reserved.

This product has been manufactured by, and is sold under the responsibility of Gibson Innovations Ltd., and Gibson Innovations Ltd. is the warrantor in relation to this product. Philips and the Philips Shield Emblem are registered trademarks of Koninklijke Philips N.V. and are used under license from Koninklijke Philips N.V.

HTL2193B_79_QSG_V1.0

