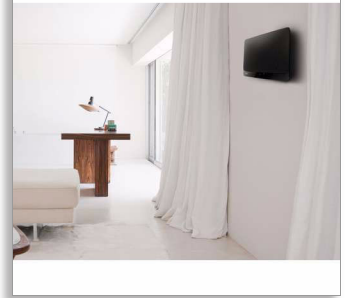




Philips
Micro music system

Bluetooth®
with MULTIPAIR



BTM2460

Hi-Fi stereo sound that fits your home

Connect up to two Bluetooth devices simultaneously or use USB Direct, customise your sound with Digital Sound Control. Connect any music device through audio-in to reinvigorate your music. An all-in-one slim, compact and wall mountable design.

Enrich your sound experience

- 20W RMS maximum output power
- Bass Reflex Speaker System delivers a powerful, deeper bass
- Digital Sound Control for optimised music style settings

Enjoy your music from multiple sources

- Stream music over Bluetooth® with multi-device pairing
- Swap music instantly between 2 devices with MULTIPAIR
- USB Direct for easy MP3 music playback
- Play MP3-CD, CD and CD-R/RW
- Audio-in for portable music playback

Design that blends into your interior

- Compact design fits any space, any lifestyle
- Wall-mountable option for flexible placement

PHILIPS

Highlights

USB Direct for easy MP3 music



Thanks to the complete file transferability, you can easily enjoy the convenience and fun of accessing more digital music via the built-in USB Direct.

Audio-in



The Audio-in connectivity allows direct playback of Audio-in content from portable media players. Besides the benefit of enjoying your favourite music in the superior sound quality delivered by the audio system, the Audio in is also extremely convenient as all you have to do is to plug your portable MP3 player into the audio system.

Bass Reflex Speaker System



Bass Reflex Speaker System delivers a deep bass experience from a compact loudspeaker box system. It differs from a conventional loudspeaker box system in the addition of a bass pipe that is acoustically aligned to the woofer to optimise the low frequency roll-off of the system. The result is deeper controlled bass and lower distortion. The system works by causing the air mass in the bass pipe to vibrate like a conventional woofer. Combined with the response of the woofer, the system extends the overall low frequency sounds to create a completely new dimension of deep bass.

Digital Sound Control



Digital Sound Control offers you a choice of pre-set Balance, Clear, Powerful, Warm and Bright controls you can use to optimise the frequency ranges for different musical styles. Each mode uses graphic equalizing technology to automatically adjust the sound balance and enhance the most important sound

frequencies in your chosen music style. Ultimately, Digital Sound Control makes it easy for you get the most out of your music by precisely adjusting the sound balance to match the type of music you are playing.

Multi-device pairing



Wireless Bluetooth® sound transmission is increasingly common in the world of sound systems, but most Bluetooth®-compatible systems allow just one device to connect at a time. Multi-device pairing lets you pair up to three devices and switch between them instantly.

Wall-mountable



The perfect combination of a slim and versatile design, your Philips audio system is cleverly designed to blend into your living space. The base of the audio system is a stand so the system can sit securely and nicely on any shelf or cabinet. When wall mounted you have all the same flexibility of the freestanding stand.

Specifications

Sound

- Sound enhancement: digital sound control
- Maximum output power (RMS): 20 W

Loudspeakers

- Speaker drivers: 2.75" woofer
- Speaker types: bass reflex speaker system

Audio playback

- Disc playback modes: fast forward/reverse, next/previous track search, repeat/shuffle/programme
- Playback media: CD, CD-R/RW, MP3-CD, USB flash drive
- USB Direct playback modes: fast reverse/fast forward, play/pause, previous/next, repeat, shuffle, stop

Tuner/Reception/Transmission

- Tuner bands: FM mono, FM stereo
- Station presets: 20
- Antenna: FM antenna (75 ohm)
- Tuner enhancement: auto digital tuning, auto scan

Connectivity

- USB: USB host

- Audio in (3.5 mm)
- Bluetooth profiles: A2DP

Convenience

- Clock: On main display, sleep timer
- Display type: LED display
- Loader type: slot

Accessories

- Included accessories: FM antenna, User Manual
- Remote control: 21-key remote

Dimensions

- Packaging width: 520 mm
- Packaging height: 323 mm
- Packaging depth: 123 mm
- Gross weight: 3.6 kg
- Net weight: 2.4 kg
- Product dimensions (WxDxH): 465 x 107 x 233 mm

Power

- Power supply: 100-240 VAC, 50/60 Hz



Issue date 2016-03-25

Version: 1.0.4

12 NC: 8670 001 30028
EAN: 48 95185 61643 8

© 2016 Koninklijke Philips N.V.
All Rights reserved.

Specifications are subject to change without notice.
Trademarks are the property of Koninklijke Philips N.V.
or their respective owners.

www.philips.com