

# 3

# 즐기세요

**DVD**

1 DVD OPEN/CLOSE

2 가 DVD

3 OPEN/CLOSE

4 DVD UP , DOWN , RIGHT   
LEFT

5 PLAY

6 STOP

참고 가 PLAY

STOP PLAY

7 DISC MENU DVD

1 TUNER

AUTO INSTALL PRESS PLAY

2 ' START ' 가 PLAY

참고 가

3 PREVIOUS NEXT

1 SURR

2 SOUND Concert, Drama, Action, Sci-fi

가

- AC 가
- DVD STANDBY-ON
- DISC 가
- TV 가
- SOURCE
- 가 ( DISC TUNER)
- IR

?

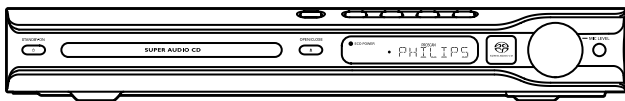
(Online)  
[www.philips.com/support](http://www.philips.com/support)



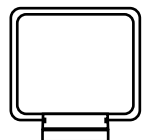
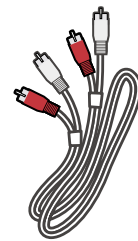
# 빠른 사용 설명서



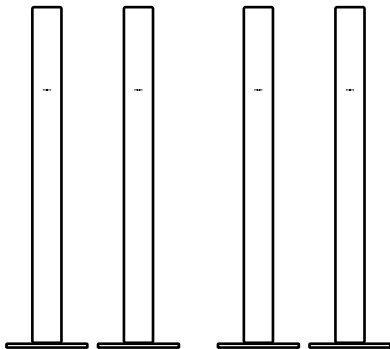
- 1** 연결하기
- 2** 설정하기
- 3** 즐기세요



DVD

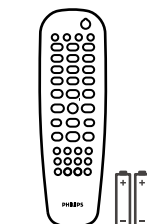
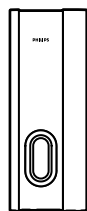


AM/MW



( & )

( & )

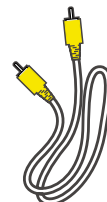


2

( & )



FM



( )

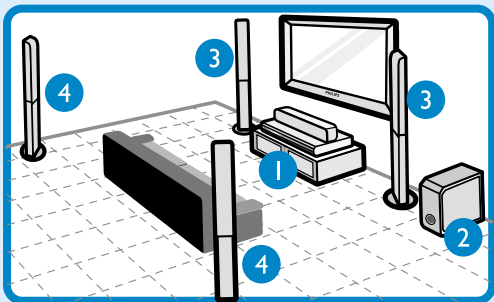


# 연결하기

A

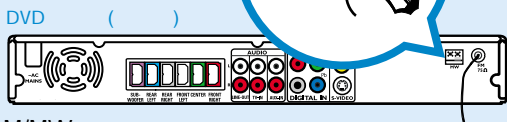
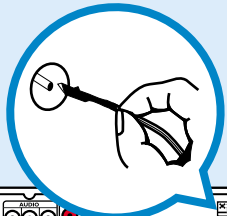
&

- 1 TV 가
- 2
- 3 TV 가
- 4 45. 가

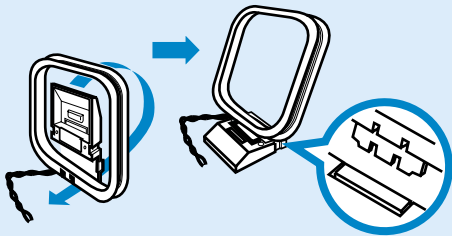


B

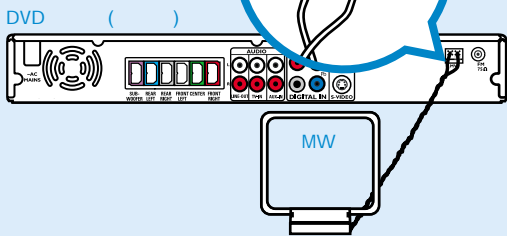
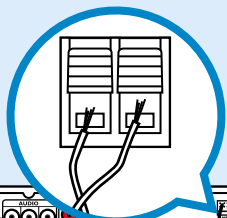
- 1 FM FM



- 2 AM/MW



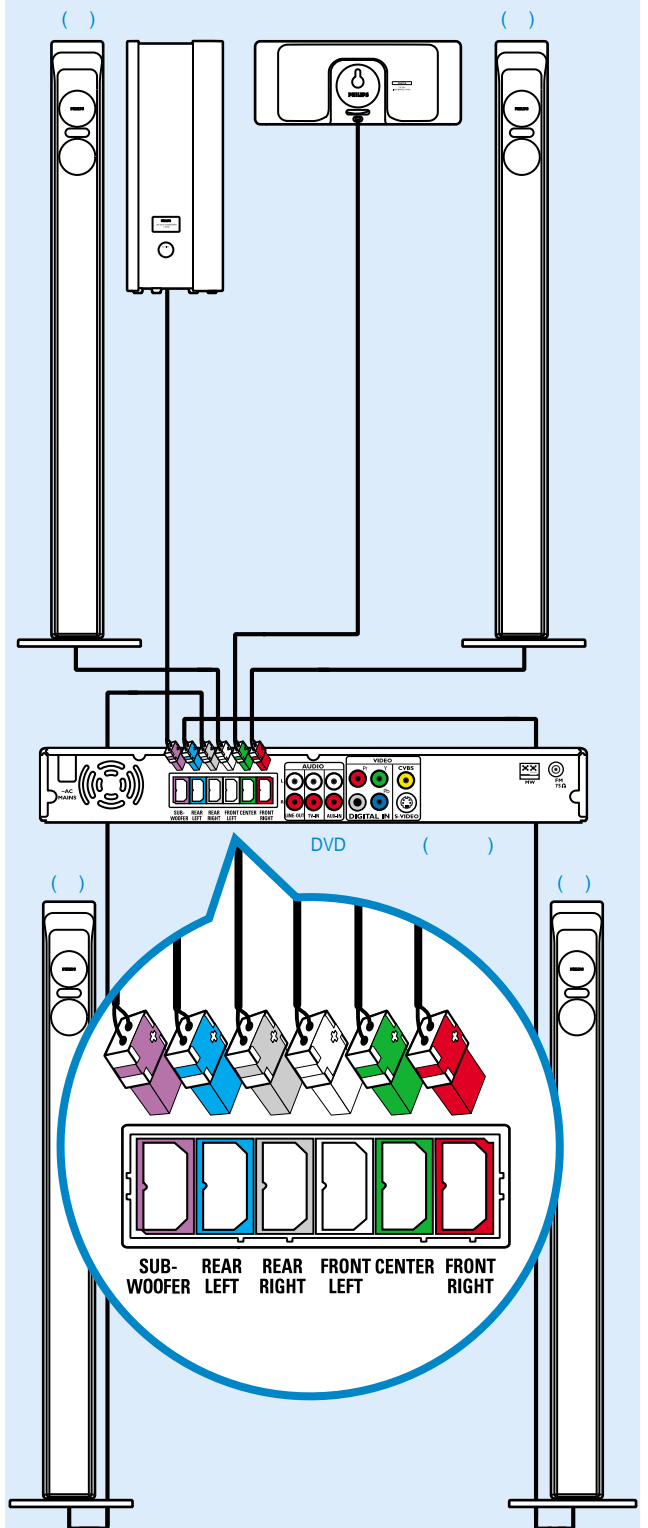
- 3



C

DVD

DVD

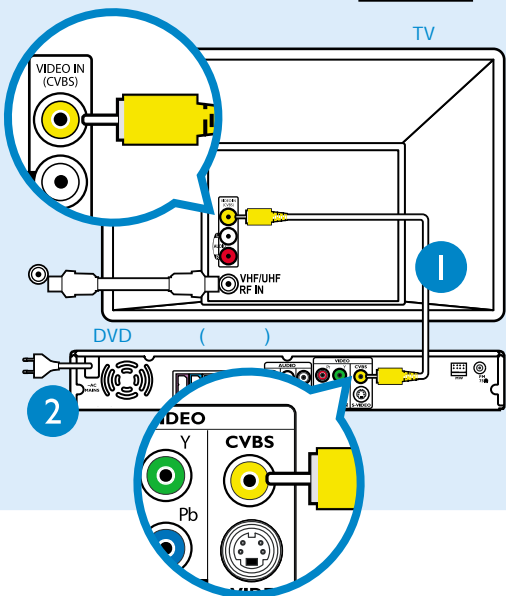


# 2 설정하기

## D TV DVD

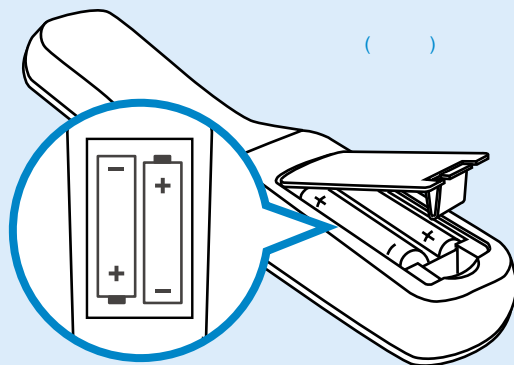
- 1 DVD TV  
CVBS VIDEO IN
- 2 DVD AC

참고 DVD



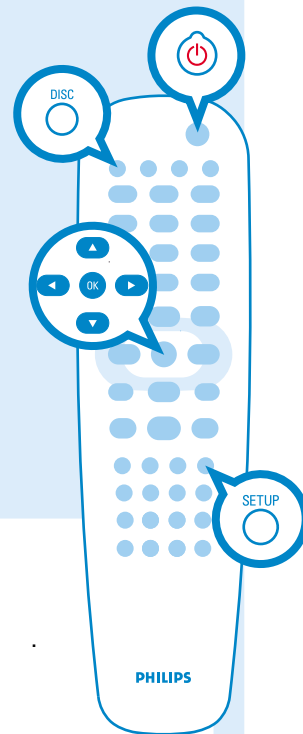
## A

- 1
- 2
- 3



## B

- 1 DVD STANDBY-ON (power icon)
- 2 'DISC' 가 DISC (power icon)
- 3 TV
- 4 TV '0' DVD background (power icon)  
( )가

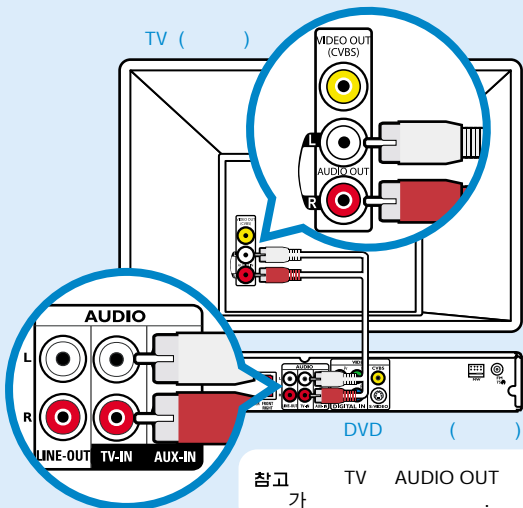


참고 TV , AV  
SELECT

TV

## E TV DVD

- 1 DVD TV  
& TV-IN TV  
& AUDIO OUT



참고 TV AUDIO OUT  
가