

Register your product and get support at  
[www.philips.com/welcome](http://www.philips.com/welcome)

HTS2511  
HTS2512



**PHILIPS**



# Contents

---

<b>1 Important</b>	2
Safety	2
Care for your product	3
Care of the environment	3
Help and support	3

---

<b>2 Your home theater</b>	4
Main unit	4
Connectors	4
Remote control	5

---

<b>3 Connect and set up</b>	6
Connect speakers	6
Connect to TV	7
Connect audio from TV and other devices	8
Set up speakers	8
Set up Progressive Scan	9

---

<b>4 Use your home theater</b>	9
Access the home menu	9
Discs	9
Data files	10
USB storage devices	11
Video and picture options	11
Radio	12
Choose sound	12

---

<b>5 Change settings</b>	13
Language settings	13
Picture and video settings	13
Audio settings	13
Parental control settings	13
Display settings	14
Energy saving settings	14
Restore default settings	14

---

<b>6 Update software</b>	14
Check software version	14
Update software through USB	14

---

<b>7 Product specifications</b>	15
---------------------------------	----

---

<b>8 Troubleshooting</b>	17
--------------------------	----

---

<b>9 Notice</b>	18
Copyright	18
About Progressive Scan	18
Trademarks	18

---

<b>10 Index</b>	19
-----------------	----

# 1 Important

Read and understand all instructions before you use your product. If damage is caused by failure to follow instructions, the warranty does not apply.

---

## Safety

### Risk of electric shock or fire!

- Never expose the product and accessories to rain or water. Never place liquid containers, such as vases, near the product. If liquids are spilt on or into the product, disconnect it from the power outlet immediately. Contact Philips Consumer Care to have the product checked before use.
- Never place the product and accessories near naked flames or other heat sources, including direct sunlight.
- Never insert objects into the ventilation slots or other openings on the product.
- Where the mains plug or an appliance coupler is used as the disconnect device, the disconnect device shall remain readily operable.
- Disconnect the product from the power outlet before lightning storms.
- When you disconnect the power cord, always pull the plug, never the cable.

### Risk of short circuit or fire!

- Before you connect the product to the power outlet, ensure that the power voltage matches the value printed on the back or bottom of the product. Never connect the product to the power outlet if the voltage is different.

### Risk of injury or damage to the home theater!

- For wall-mountable products, use only the supplied wall mount bracket. Secure the wall mount to a wall that can support the combined weight of the product and the wall mount. Koninklijke Philips Electronics N.V. bears no responsibility for improper wall mounting that results in accident, injury or damage.
- For speakers with stands, use only the supplied stands. Secure the stands to the speakers tightly. Place the assembled stands on flat, level surfaces that can support the combined weight of the speaker and stand.

- Never place the product or any objects on power cords or on other electrical equipment.
- If the product is transported in temperatures below 5°C, unpack the product and wait until its temperature matches room temperature before connecting it to the power outlet.
- Visible and invisible laser radiation when open. Avoid exposure to beam.
- Do not touch the disc optical lens inside the disc compartment.
- Parts of this product can be made of glass. Handle with care to avoid injury and damage.

### Risk of overheating!

- Never install this product in a confined space. Always leave a space of at least four inches around the product for ventilation. Ensure curtains or other objects never cover the ventilation slots on the product.

### Risk of contamination!

- Do not mix batteries (old and new or carbon and alkaline, etc.).
- Danger of explosion if batteries are incorrectly replaced. Replace only with the same or equivalent type.
- Remove batteries if they are exhausted or if the remote control is not to be used for a long time.
- Batteries contain chemical substances, they should be disposed of properly.

### Risk of swallowing batteries!

- The product/remote control may contain a coin/button type battery, which can be swallowed. Keep the battery out of reach of children at all times! If swallowed, the battery can cause serious injury or death. Severe internal burns can occur within two hours of ingestion.
- If you suspect that a battery has been swallowed or placed inside any part of the body, seek immediate medical attention.
- When you change the batteries, always keep all new and used batteries out of reach of children. Ensure that the battery compartment is completely secure after you replace the battery.
- If the battery compartment cannot be completely secured, discontinue use of the product. Keep out of reach of children and contact the manufacturer.

## Care for your product

- Do not insert any objects other than discs into the disc compartment.
- Do not insert warped or cracked discs into the disc compartment.
- Remove discs from the disc compartment if you are not using the product for an extended period of time.
- Use only microfiber cloth to clean the product.

## Care of the environment



Your product is designed and manufactured with high quality materials and components, which can be recycled and reused.



When this crossed-out wheeled bin symbol is attached to a product it means that the product is covered by the European Directive 2002/96/EC. Please inform yourself about the local separate collection system for electrical and electronic products.

Please act according to your local rules and do not dispose of your old products with your normal household waste.

Correct disposal of your old product helps to prevent potential negative consequences for the environment and human health.



Your product contains batteries covered by the European Directive 2006/66/EC, which cannot be disposed with normal household waste.

Please inform yourself about the local rules on separate collection of batteries because correct disposal helps to prevent negative consequences for the environmental and human health.

## Help and support

Philips provides extensive online support. Visit our website at [www.philips.com/support](http://www.philips.com/support) to:

- download the complete user manual
- print the quick start guide
- watch video tutorials (available only for selected models)
- find answers to frequently answered questions (FAQs)
- email us a question
- chat with our support representative.

Follow the instructions on the website to select your language, and then enter your product model number.

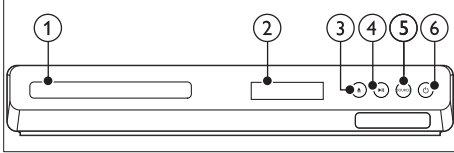
Alternatively, you can contact Philips Consumer Care in your country. Before you contact Philips, note down the model number and serial number of your product. You can find this information on the back or bottom of your product.

## 2 Your home theater

Congratulations on your purchase, and welcome to Philips! To fully benefit from the support that Philips offers, register your product at [www.philips.com/welcome](http://www.philips.com/welcome).

### Main unit

This section includes an overview of the main unit.

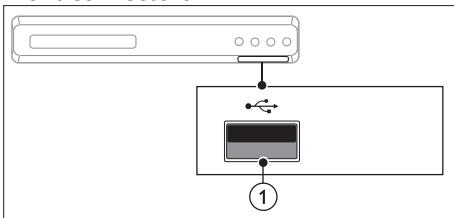


- a **Disc compartment**
- b **Display panel**
- c **▲ (Open/Close)**  
Open or close the disc compartment, or eject the disc.
- d **▶|| (Play/Pause)**  
Start, pause or resume play.
- e **SOURCE**  
Select an audio or video source for the home theater.
- f **⏻ (Standby-On)**  
Switch the home theater on or to standby.

### Connectors

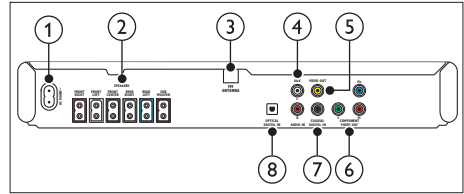
This section includes an overview of the connectors available on your home theater.

#### Front connectors



- a **🔌 (USB)**  
Audio, video or picture input from a USB storage device.

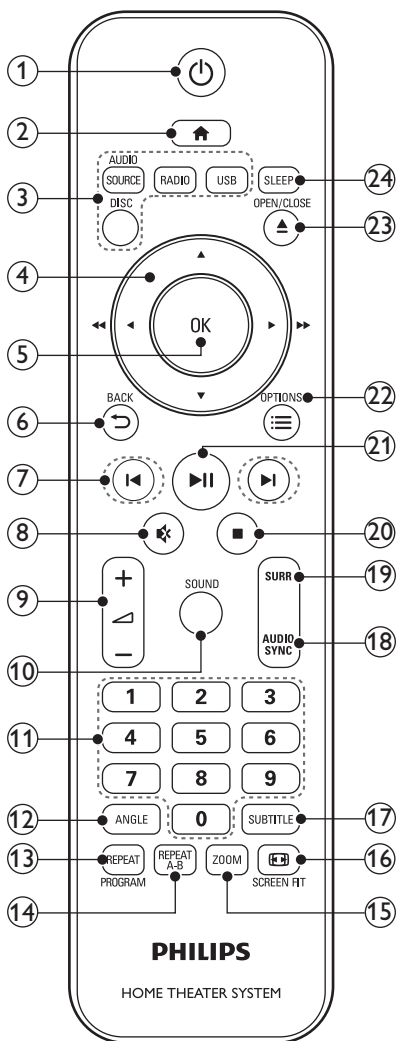
#### Rear connectors



- a **AC MAINS**  
Connect to the power supply.
- b **SPEAKERS**  
Connect to the supplied speakers and subwoofer.
- c **FM ANTENNA**  
Fixed FM antenna.
- d **AUDIO IN-AUX**  
Connect to an analog audio output on the TV or an analog device.
- e **VIDEO OUT**  
Connect to the composite video input on the TV.
- f **COMPONENT VIDEO OUT**  
Connect to the component video input on the TV.
- g **DIGITAL IN-COAXIAL**  
Connect to a coaxial audio output on the TV or a digital device.
- h **DIGITAL IN-OPTICAL**  
Connect to an optical audio output on the TV or a digital device.

## Remote control

This section includes an overview of the remote control.



a **⏻ (Standby-On)**  
Switch the home theater on or to standby.

b **🏠 (Home)**  
Access the home menu.

### c Source buttons

- **DISC:** Switch to disc source. Access or exit the disc menu when you play a disc.
- **AUDIO SOURCE:** Select an audio input source.
- **RADIO:** Switch to FM radio.
- **USB:** Switch to USB storage device.

### d Navigation buttons

- Navigate menus.
- In video mode, press left or right to fast backward or fast forward; press up or down to slow forward or slow backward.
- In radio mode, press left or right to search a radio station; press up or down to fine tune a radio frequency.

### e OK

Confirm an entry or selection.

### f ⏪ BACK

Return to a previous menu screen.

### g ⏮ / ⏭ (Previous/Next)

- Skip to the previous or next track, chapter or file.
- In radio mode, select a preset radio station.

### h 🔇 (Mute)

Mute or restore volume.

### i 🔊 +/-

Increase or decrease volume.

### j SOUND

Select a sound mode.

### k Numeric buttons

Select an item to play.

### l ANGLE

Select video scenes recorded in different camera angles.

### m REPEAT / PROGRAM

- Select or turn off repeat mode.
- In radio mode, press once to access program mode, and press again to store the radio station.
- In radio mode, press and hold for three seconds to reinstall the radio stations.

### n REPEAT A-B

Mark two points within a chapter or track to repeat play, or turn off the repeat mode.

- **ZOOM**  
Zoom into a video scene or picture. Press the **Navigation buttons** (left/right) to select a zoom factor.
- p **SCREEN FIT**  
Fit the picture format to the TV screen.
- q **SUBTITLE**  
Select subtitle language for video.
- r **AUDIO SYNC**
  - Select an audio language or channel.
  - Press and hold to access audio delay setting, and then press the **+/-** or **Navigation buttons** to delay the audio to match the video.
- s **SURR**  
Select surround sound or stereo sound.
- t **(Stop)**
  - Stop play.
  - In radio mode, press and hold to erase the current preset radio stations.
- u **(Play/Pause)**  
Start, pause or resume play.
- v **OPTIONS**  
Access more play options while playing a disc or a USB storage device.
- w **OPEN/CLOSE**  
Open or close the disc compartment, or eject the disc.
- x **SLEEP**  
Switch the home theater to standby mode after the elapsed time.

## 3 Connect and set up

This section helps you connect your home theater to a TV and other devices, and then set it up. For information about the basic connections of your home theater and accessories, see the quick start guide. For a comprehensive interactive guide, visit [www.connectivityguide.philips.com](http://www.connectivityguide.philips.com).

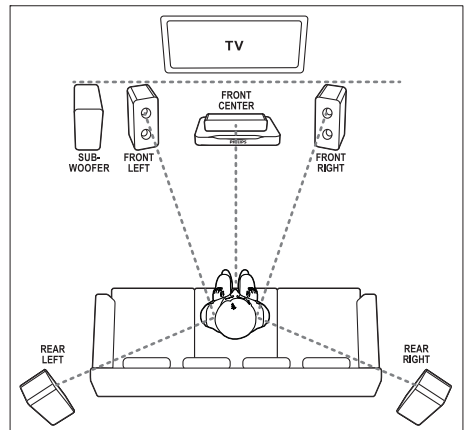
**Note**

- For identification and supply ratings, see the type plate at the back or bottom of the product.
- Before you make or change any connections, make sure that all devices are disconnected from the power outlet.

### Connect speakers

The speaker cables are color-coded for easy connection. To connect a speaker to your home theater, match the color on the speaker cable to the color on the connector.

Speaker position plays a critical role in setting up a surround sound effect. For best effect, position all the speakers towards the seating position and place them close to your ear level (seated).







## Note

- Surround sound depends on factors such as room shape and size, type of wall and ceiling, windows and reflective surfaces, and speaker acoustics. Experiment with the speaker positions to find the optimum setting for you.

Follow these general guidelines for speakers placement.

- 1 Seating position:**  
This is the center of your listening area.
- 2 FRONT CENTER** (front center) speaker:  
Place the center speaker directly in front of the seating position, either above or below your TV.
- 3 FRONT LEFT** (front left) and **FRONT RIGHT** (front right) speakers:  
Place the left and right speakers in the front, and at equal distance from the center speaker; Make sure that the left, right, and the center speakers are at equal distance from your seating position.
- 4 REAR LEFT** (rear left) and **REAR RIGHT** (rear right) speakers:  
Place the rear surround speakers to the left and right side of your seating position, either in line with it or slightly behind it.
- 5 SUBWOOFER** (subwoofer):  
Place the subwoofer at least one meter to the left or right of the TV. Leave about 10-centimeter clearance from the wall.

## Connect to TV

Connect your home theater to a TV to watch videos. You can listen to the TV audio through your home theater speakers.

Use the best quality connection available on your home theater and TV.

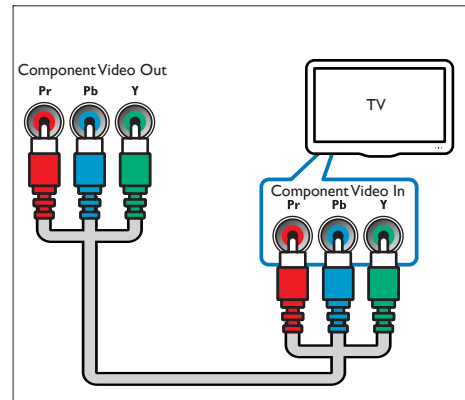
### Option 1: Connect to the TV through component video (YPbPr)

#### Good quality video

A component video connection can support progressive scan output.

- 1** Using a component video cable, connect the **COMPONENT VIDEO OUT** connectors on your home theater to the **Component Video Input (YPbPr)** connectors on the TV.

- 2** Connect an audio cable to hear the TV audio through your home theater (see 'Connect audio from TV and other devices' on page 8).
- 3** When you watch TV programs, press **SOURCE** on your home theater repeatedly to select the correct audio input.
- 4** When you watch videos, switch your TV to the correct video input. For details, see the TV user manual.
- 5** If your TV supports Progressive scan, enable the progressive scan mode to enjoy higher picture quality (see 'Set up Progressive Scan' on page 9).

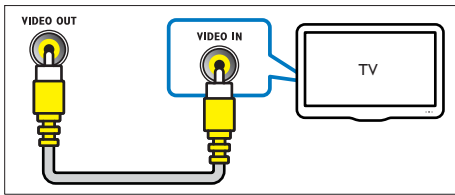


### Option 2: Connect to the TV through composite video

#### Basic quality video

A composite connection does not support high-definition video.

- 1** Using a composite video cable, connect the **VIDEO OUT** connector on your home theater to the **VIDEO IN** connector on the TV.
  - The video input connector might be labeled **AV IN**, **COMPOSITE**, or **BASEBAND**.
- 2** Connect an audio cable to hear the TV audio through your home theater (see 'Connect audio from TV and other devices' on page 8).
- 3** When you watch TV programs, press **SOURCE** on your home theater repeatedly to select the correct audio input.
- 4** When you watch videos, switch your TV to the correct video input. For details, see the TV user manual.



## Connect audio from TV and other devices

Play audio from TV or other devices through your home theater.  
Use the best quality connection available on your TV, home theater, and other devices.

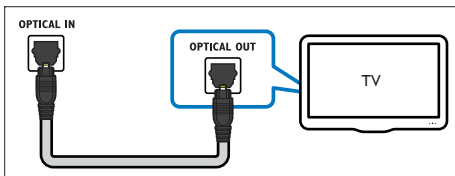
### Note

- The audio connections in this user manual are only recommendations. You can use other connections too.

### Option 1: Connect audio through a digital optical cable

#### Best quality audio

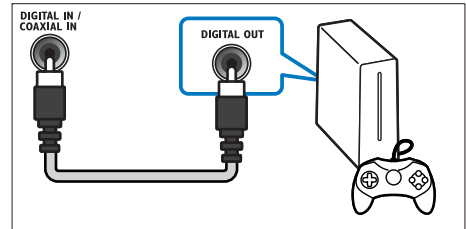
- Using an optical cable, connect the **OPTICAL** connector on your home theater to the **OPTICAL OUT** connector on the TV or other device.
  - The digital optical connector might be labeled **SPDIF** or **SPDIF OUT**.



### Option 2: Connect audio through a digital coaxial cable

#### Good quality audio

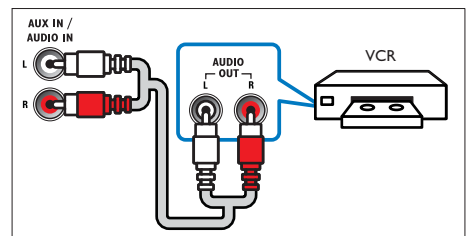
- Using a coaxial cable, connect the **COAXIAL** connector on your home theater to the **COAXIAL/DIGITAL OUT** connector on the TV or other device.
  - The digital coaxial connector might be labeled **DIGITAL AUDIO OUT**.



### Option 3: Connect audio through analog audio cables

#### Basic quality audio

- Using an analog cable, connect the **AUX** connectors on your home theater to the **AUDIO OUT** connectors on the TV or other device.



## Set up speakers

Set up the speakers manually to experience customized surround sound.

#### Before you start

Make the necessary connections described in the quick start guide, and then switch the TV to the correct source for your home theater.

- Press **⬆** (Home).
- Select **[Setup]** and then press **OK**.
- Select **[Audio]** > **[Speaker Setup]**.

- 4 Press the **Navigation buttons** and **OK** to select and change:
- **[Speakers Volume]**: Set the volume level of each speaker.
  - **[Speakers Delay]**: Set the delay time for speakers which are placed closer to the seating position in order to obtain equal audio transmission from all the speakers.

---

## Set up Progressive Scan

Progressive scan offers higher picture resolution and quality, it displays twice the number of frames per seconds than the ordinary TV system. If your have a progressive scan TV, you can enable the progressive scan on your home theater to enjoy higher picture quality.



### Note

- There are some progressive scan TVs that are not fully compatible with your home theater, resulting in an unnatural picture when you play a video disc. In such case, turn off the progressive scan feature on your home theater and the TV.

### Before you start

- Connect your home theater to the TV through component video connection.
- Make the necessary connections described in the quick start guide, and then switch the TV to the correct source for your home theater:

- 1 Press **⬆️ (Home)**.
- 2 Select **[Setup]** and then press **OK**.
- 3 Select **[Video] > [Progressive]**.
- 4 Select **[On]** and press **OK**.
  - » A warning message is displayed.
- 5 To proceed, select **[OK]** and press **OK**.
  - » A distorted picture may be displayed, it is because the progressive scan mode on the TV is deactivated.
- 6 Enable the progressive scan mode on the TV. For details, see the TV user manual.
  - » If the setting is not compatible with the TV, a blank or distorted screen is displayed. Wait for 15 seconds for auto recovery.

## 4 Use your home theater

This section helps you use the home theater to play media from a wide range of sources.

### Before you start

- Make the necessary connections described in the quick start guide and the user manual.
- Switch the TV to the correct source for your home theater (for example, HDMI, AV IN).

---

## Access the home menu

The home menu provides easy access to connected devices, setup and other useful features in your home theater.

- 1 Press **⬆️ (Home)**.
  - » The home menu is displayed.
- 2 Press the **Navigation buttons** and **OK** to select the following:
  - **[DISC]**: Start disc play.
  - **[USB]**: Access the USB content browser
  - **[Setup]**: Access menus to change video, audio and other settings.
- 3 Press **⬆️ (Home)** to exit.

---

## Discs

Your home theater can play DVDs, VCDs, and CDs. It can also play discs that you've made at home, such as CD-R discs of photos and music.

- 1 Insert a disc into the home theater.
- 2 If the disc does not play automatically, press **DISC**.
- 3 Use the remote control to control play (see 'Remote control' on page 5).

---

## Play buttons

---

Button	Action
<b>Navigation buttons</b>	Navigate menus. Up/Down: <ul style="list-style-type: none"><li>• Video: Slow forward or slow backward (VCD/SVCD can only slow forward).</li><li>• Picture: Rotate the picture clockwise or counter-clockwise.</li></ul> Left/Right: <ul style="list-style-type: none"><li>• Video: Fast backward or fast forward. Press repeatedly to change the search speed.</li></ul>
<b>OK</b>	Confirm an entry or selection.
<b>▶   (Play/Pause)</b>	Start, pause or resume play.
<b>■</b>	Stop play.
<b>◀/▶</b>	Skip to the previous or next track, chapter or file.
<b>SUBTITLE</b>	Select subtitle language for video.
<b>AUDIO SYNC</b>	Select an audio language or channel.
<b>DISC</b>	Access or exit the disc menu.
<b>◻ SCREEN FIT</b>	Fit the picture format to the TV screen.
<b>ZOOM</b>	Zoom into a video scene or picture.
<b>REPEAT</b>	Select or turn off repeat mode.
<b>REPEAT A-B</b>	Mark two points within a chapter or track to repeat play, or turn off the repeat mode.
<b>ANGLE</b>	Select video scenes recorded in different camera angles.
<b>☰ OPTIONS</b>	Access the advanced options when you play your video, or media files (see 'Video and picture options' on page 11).

---

## Synchronize picture and sound

If the audio and video are not synchronized, delay the audio to match the video.

- 1 While playing video, press and hold **AUDIO SYNC**.
  - » Audio sync menu is displayed.
- 2 Press the **+/-** or **Navigation buttons** to synchronize the audio with the video, and then press **OK**.

---

## Note

- Picture and sound can be synchronized through the setup menu, press **⬆ (Home)**, select **[Setup] > [Audio] > [Audio Sync]**.

---

## Data files

Your home theater can play pictures, audio and video files contained in a disc or a USB storage device. Before you play a file, check that the file format is supported by your home theater (see 'File formats' on page 15).

- 1 Play the files from a disc or USB storage device.
- 2 To stop play, press **■**.
  - To resume the video from where you stopped, press **▶||**.

---

## Subtitles

If your video has subtitles in multiple languages, select a subtitle language.

---

## Note

- Make sure that the subtitle file has the exact same name as the video file. For example, if the video file is named 'movie.avi', name the subtitle file as 'movie.srt' or 'movie.sub'.
- Your home theater supports the following file formats: .srt, .sub, .txt, .ssa, .ass, .smi, and .sami. If the subtitles do not appear correctly, change the character set.

- 1 While playing video, press **SUBTITLE** to select a language.
- 2 For DivX video, if the subtitles do not appear correctly, continue the following steps to change the character set.
- 3 Press **⬆ (Home)**.
- 4 Select **[Setup]** and then press **OK**.
- 5 Select **[Preferences] > [DivX Subtitle]**.
- 6 Select a character set that supports the subtitle.

Character Set	Language
[Standard]	English, Albanian, Danish, Dutch, Finnish, French, Gaelic, German, Italian, Kurdish (Latin), Norwegian, Portuguese, Spanish, Swedish and Turkish

## VOD code for DivX

Before you purchase DivX videos and play them on your home theater, register the home theater on [www.divx.com](http://www.divx.com) using the DivX VOD code.

- 1 Press (Home).
- 2 Select **[Setup]** and then press **OK**.
- 3 Select **[General]** > **[DivX(R) VOD Code]**.
  - » The DivX VOD registration code for your home theater is displayed.

## USB storage devices

Enjoy pictures, audio, and video stored on a USB storage device such as an MP4 player or digital camera.

### What you need

- A USB storage device that is formatted for FAT file system, and complies with the Mass Storage Class.



### Note

- If you use a USB extension cable, USB HUB or USB multi-reader, the USB storage device may not be recognized.
- You can connect to a digital camera if they can play the files without using a special computer program.

- 1 Connect a USB storage device to the (USB) connector on your home theater.
- 2 Press **USB**.
  - » A content browser is displayed.
- 3 Select a file and then press **OK**.
- 4 Use the play buttons to control play (see 'Play buttons' on page 10).

## Video and picture options

Use advanced features when you play pictures and video files from a disc or a USB storage device.

### Video options

- 1 Press **OPTIONS**.
  - » The video options menu is displayed. Depending on the video source, some options are not available.
- 2 Press the **Navigation buttons** and **OK** to select and change:
  - **[Info]**: Display the play information.
  - **[PBC]**: Enable or disable the content menu navigation of VCD and SVCD discs with Play Back Control feature.
  - **[Aspect ratio]**: Select a display ratio of picture that matches your TV screen.
  - **[Audio]**: Select audio language for video.
  - **[Subtitle]**: Select subtitle language for video.
  - **[Angle]**: Select video scenes recorded in different camera angles.

### Picture options

- 1 Press **OPTIONS**.
- 2 Press the **Navigation buttons** and **OK** to select and change:
  - **[Color]**: Turn on or off the color mode.
  - **[Photo preview]**: Display the thumbnail of photos.
- 3 Press / to go to previous or next preview page.
- 4 Press the **Navigation buttons** and **OK** to select a picture.

### Musical slideshow

If the picture and audio files are from the same disc or USB storage device, you can create a musical slideshow.

- 1 Select an audio track and then press **OK**.
- 2 Press **BACK** and then go to the picture folder.
- 3 Select a picture and then press **OK** to start the slideshow.
- 4 Press to stop slideshow.
- 5 Press again to stop music.

---

## Radio

Listen to FM radio on your home theater, and store up to 40 radio stations.



### Note

- AM and digital radio are not supported.
- If no stereo signal is detected, or if fewer than five stations are found, you are prompted to install the radio stations again.

- 1 Extend the FM antenna at the back of your home theater and place it away from the TV or other sources of radiation.
- 2 Press **RADIO**.
  - » If you have already installed the radio stations, the last channel that you listened to is played.
  - » If you have not installed any radio stations, the message **AUTO INSTALL...PRESS PLAY** appears on the display panel. press **▶||**.
- 3 Use the remote control to listen or to change radio stations.

---

Button	Action
Numeric buttons, <b>◀ / ▶</b>	Select a preset radio station.
Navigation buttons	Left/Right: Search for a radio station. Up/Down: Fine tune a radio frequency.
<b>■</b>	Press to stop the installation of radio stations. Press and hold to erase the preset radio station.
<b>PROGRAM</b>	Manual: 1) Press <b>PROGRAM</b> . 2) Press <b>◀ / ▶</b> to select your preset. 3) Press <b>PROGRAM</b> again to store the radio station. Automatic: Press and hold for three seconds to reinstall the radio stations.

---

---

## Tuning grid

In some countries, you can toggle the FM tuning grid between 50 kHz and 100 kHz. Switching the tuning grid erases all preset radio stations.

- 1 Press **RADIO**.
- 2 Press **■**.
- 3 Press and hold **▶|| (Play/Pause)** to toggle between 50 kHz or 100 kHz.

---

## Choose sound

This section helps you choose the ideal sound for your video or music.

---

### Sound mode

Select predefined sound modes to suit your video or music.

- 1 Press **SOUND** repeatedly to select a sound mode.
  - **CInEMAA**: Enjoy a cinematic audio experience, specially enhanced for movies.
  - **SANGEEt**: Recreate the original recording environment of your music, in the studio or at a concert.
  - **CRICKEt**: Enjoy thrilling arcade sounds, ideal for action-packed video games or loud parties.
  - **nEWS**: Hear every word with optimized speech and clear vocals.
  - **ORIGInAL**: Experience the original sound of your movies and music, without added sound effects.

---

### Surround sound mode

Experience an immersive audio experience with surround sound modes.

- 1 Select **SURR** repeatedly to select a surround mode.
  - **SURrOUnd (mUL-CH)**: 5.1-channel surround sound, best cinematic experience.
  - **StErEO**: Two-channel stereo sound. Ideal for listening to music.

## 5 Change settings

The home theater settings are already configured for optimal performance. Unless you have a reason to change a setting, we recommend that you keep the default setting.

### Note

- You cannot change a setting that is grayed out.
- To return to the previous menu, press **↶** **BACK**. To exit the menu, press **⬆** (Home).

## Language settings

### Onscreen display language

- 1 Press **⬆** (Home).
- 2 Select **[Setup]** and then press **OK**.
- 3 Select **[General]** and then press **OK**.
  - **[OSD Language]**: Select a display language for menu.

### Disc language

- 1 Press **⬆** (Home).
- 2 Select **[Setup]** and then press **OK**.
- 3 Select **[Preferences]** and then press **OK**.
  - **[Audio]**: Select an audio language for discs.
  - **[Subtitle]**: Select a subtitle language for discs.
  - **[Disc Menu]**: Select a menu language for discs.

### Note

- If your preferred disc language is not available, select **[Others]** from the list, and enter the 4-digit language code found at the end of this user manual.
- If you select a language that is not available on a disc, the home theater uses the default language of the disc.

## Picture and video settings

- 1 Press **⬆** (Home).
- 2 Select **[Setup]** and then press **OK**.
- 3 Select **[Video]** and then press **OK**.
  - **[TV System]**: Select a video format supported by the TV.
  - **[TV Display]**: Select a picture format to fit the TV screen.
  - **[Picture Setting]**: Select animation for the slide show.

### Note

- If you change a setting, make sure that the TV supports the new setting.

## Audio settings

- 1 Press **⬆** (Home).
- 2 Select **[Setup]** and then press **OK**.
- 3 Select **[Audio]** and then press **OK**.
  - **[Sound Mode]**: Select a predefined sound mode to suit your video and music.
  - **[Night Mode]**: Select quiet or full dynamic sound. Night mode decreases the volume of loud sounds and increases volume of sounds such as speech. Applicable to Dolby Digital encoded DVD discs only.
  - **[Treble/Bass]**: Set the high frequency (treble) and low frequency (bass) settings of the home theater.

## Parental control settings

### Password and Ratings

- 1 Press **⬆** (Home).
- 2 Select **[Setup]** and then press **OK**.
- 3 Select **[Preferences]** and then press **OK**.
  - **[Password]**: Set or change your password for parental control access. If you do not have a password or have forgotten your password, enter **000000**.
  - **[Parental Control]**: Enable maturity-based restricted access for playback of DVD-video that are recorded with ratings. To play discs irrespective of the rating, select **[8 Adult]**.

---

## Lock disc

- 1 Press **⬆** (Home).
- 2 Select **[Setup]** and then press **OK**.
- 3 Select **[General]** and then press **OK**.
  - **[Disc Lock]**: Lock the disc to restrict play. You can lock up to 20 discs on your home theater.

### Note

- To play a locked disc, follow the onscreen instructions to enter the password, and then press **OK**.

---

## Display settings

- 1 Press **⬆** (Home).
- 2 Select **[Setup]** and then press **OK**.
- 3 Select **[Preferences]** and then press **OK**.
  - **[PBC]**: Enable or disable the content menu navigation of VCD and SVCD discs with Play Back Control feature.

---

## Energy saving settings

- 1 Press **⬆** (Home).
- 2 Select **[Setup]** and then press **OK**.
- 3 Select **[General]** and then press **OK**.
  - **[Display Dim]**: Set the brightness of the home theater front panel display.
  - **[Sleep Timer]**: Switch the home theater to standby mode after the elapsed time.
  - **[Auto Standby]**: Switch the home theater to standby mode after 30 minutes of no activity when in disc or USB mode.

---

## Restore default settings

- 1 Press **⬆** (Home).
- 2 Select **[Setup]** and then press **OK**.
- 3 Select **[Preferences]** > **[Default]**, and then press **OK**.
- 4 Select **[OK]** and then press **OK** to confirm.
  - » Your home theater is reset to its default settings, except for password, parental control and disc lock settings.

# 6 Update software

Philips continually tries to improve its products. To get the best features and support, update your home theater with the latest software.

Compare the version of your current software with the latest version on [www.philips.com/support](http://www.philips.com/support). If the current version is lower than the latest version available on the Philips support website, upgrade your home theater with the latest software.

### Caution

- Do not install a lower version of software than the current version installed on your product. Philips is not liable for problems caused due to software downgrade.

---

## Check software version

Check the version of the current software installed on your home theater.

- 1 Press **⬆** (Home).
- 2 Select **[Setup]** and then press **OK**.
- 3 Select **[Preferences]** > **[Version Info]**.
  - » The software version is displayed.

---

## Update software through USB

### What you need

- A USB flash drive that is FAT-formatted, with at least 75MB of memory. Do not use a USB hard drive.
- A computer with Internet access.
- An archive utility that supports the ZIP file format.



## Step 1: Download the latest software

- 1 Connect a USB flash drive to your computer.
- 2 In your web browser, go to [www.philips.com/support](http://www.philips.com/support).
- 3 At the Philips Support website, find your product and locate the **Software and drivers**.
  - » The software update is available as a zip file.
- 4 Save the zip file in the root directory of your USB flash drive.
- 5 Use the archive utility to extract the software update file in the root directory.
- 6 Disconnect the USB flash drive from your computer.

## Step 2: Update the software



### Caution

- Do not switch off the home theater or remove the USB flash drive during the update.

- 1 Connect the USB flash drive containing the downloaded file to your home theater.
  - Make sure that the disc compartment is closed and there is no disc inside.
- 2 Switch your TV to the correct source for your home theater.
- 3 Follow the onscreen instructions to confirm the update.
  - » Once complete, the home theater automatically switches off and restarts. If it does not, disconnect the power cord for a few seconds and then reconnect it.

# 7 Product specifications




### Note

- Specifications and design are subject to change without notice.

## Region codes

The type plate on the back or bottom of the home theater shows which regions it supports.

Country	DVD
Europe, United Kingdom	 
Russia, India	 

## Media formats

- DVD-Video, DVD+R/+RW, DVD-R/-RW, DVD+R/-R DL, CD-R/CD-RW, Audio CD, Video CD/SVCD, Picture files, MP3 media, WMA media, DivX media, USB storage device

## File formats

- Audio: .mp3, .wma
- Video: .avi, .divx, .mpeg, .mjpeg
- Picture: .jpg, .jpeg

## Amplifier

- Total output power: 300W RMS (30% THD)
- Frequency response: 20 Hz-20 kHz /  $\pm 3$  dB
- Signal-to-noise ratio: > 65 dB (CCIR) / (A-weighted)
- Input sensitivity:
  - AUX: 2 V

---

## Video

- Signal system: PAL / NTSC
- Component video output: 480i/576i, 480p/576p, 720p, 1080i

---

## Audio

- S/PDIF Digital audio input:
  - Coaxial: IEC 60958-3
  - Optical: TOSLINK
- Sampling frequency:
  - MP3: 32 kHz, 44.1 kHz, 48 kHz
  - WMA: 44.1 kHz, 48 kHz
- Constant bit rate:
  - MP3: 32 kbps - 320 kbps
  - WMA: 128 bps - 192 kbps

---

## Radio

- Tuning range:
  - Europe/Russia/China: FM 87.5-108 MHz (50 kHz)
  - Asia Pacific/Latin America: FM 87.5-108 MHz (50/100 kHz)
- Signal-to-noise ratio: FM >45 dB
- Frequency response: FM 200 Hz-12.5 kHz / ±6 dB

---

## USB

- Compatibility: Hi-Speed USB (2.0)
- Class support: USB Mass Storage Class (MSC)
- File system: FAT16, FAT32

---

## Main unit

- Power supply:
  - Europe/China/Russia/India: 220-240V~, 50 Hz
  - Latin America/Asia Pacific: 110-240V~, 50-60 Hz
- Power consumption: 55 W
- Standby power consumption: ≤ 0.9 W
- Dimensions (WxHxD): 360 x 58 x 325 mm
- Weight: 2.35 kg

---

## Subwoofer

- Output power: 50 W RMS (30% THD)
- Impedance: 8 ohm
- Speaker drivers: 133 mm (5.25") woofer
- Dimensions (WxHxD): 195 x 265 x 265 mm
- Weight: 2.61 kg

---

## Speakers

### Center speaker:

- Output power: 50 W RMS (30% THD)
- Speaker impedance: 4 ohm
- Speaker drivers: 1 x 70 mm (2.75") woofer
- Dimensions (WxHxD): 84.5 x 89 x 89 mm
- Weight: 0.27 kg

### Front/Rear speaker:

- Output power: 4 x 50 W RMS (30% THD)
- Speaker impedance: 4 ohm
- Speaker drivers: 1 x 70 mm (2.75") woofer
- Dimensions (WxHxD): 84.5 x 89 x 89 mm
- Weight: 0.25-0.29 kg/each

---

## Remote control batteries

- 2 x AAA-R03-1.5 V

---

## Laser

- Type: Semiconductor laser GaAlAs (CD)
- Wave length: 645 - 665 nm (DVD), 770 - 800 nm (CD)
- Output power: 6 mW (DVD), 7 mW (VCD/CD)
- Beam divergence: 60 degrees.

## 8 Troubleshooting



### Warning

- Risk of electric shock. Never remove the casing of the product.

To keep the warranty valid, never try to repair the product yourself.

If you have problems using this product, check the following points before you request service. If you still have a problem, get support at [www.philips.com/support](http://www.philips.com/support).

### Main unit

#### The buttons on the home theater do not work.

- Disconnect the home theater from the power supply for a few minutes, then reconnect.

### Picture

#### No picture.

- Make sure that the TV is switched to the correct source for the home theater.
- If this happens when you change the TV system, press **▲** to open the disc compartment, and then **439** on the remote control to restore the default TV system.
- If you have enabled the progressive scan mode, press **▲** to open the disc compartment, and then **297** on the remote control to disable the progressive scan.

### Sound

#### No sound from home theater speakers.

- Connect the audio cable from your home theater to your TV or other devices (see 'Connect audio from TV and other devices' on page 8).
- Reset your home theater to its factory settings (see 'Restore default settings' on page 14), then switch it off and switch on again.
- On your home theater, press **SOURCE** repeatedly to select the correct audio input.

#### Distorted sound or echo.

- If you play audio from the TV through the home theater, make sure that the TV is muted.

#### Audio and video are not synchronized.

- 1) Press and hold **AUDIO SYNC**. 2) Press the **+/-** or **Navigation** buttons within 5 seconds to synchronize the audio with the video.

### Play

#### Cannot play a disc.

- Clean the disc.
- Make sure that the home theater supports the type of disc (see 'Media formats' on page 15).
- Make sure that the home theater supports the region code of the disc.
- If the disc is a DVD±RW or DVD±R disc, make sure that it is finalized.

#### Cannot play a DivX file.

- Make sure that the DivX file is encoded according to the 'Home Theater Profile' with the DivX encoder.
- Make sure that the DivX file is complete.

#### DivX subtitles do not display correctly.

- Make sure that the subtitle file name is the same as the movie file name (see 'Subtitles' on page 10).
- Select the correct character set (see 'Subtitles' on page 10).

#### Cannot read the contents of a USB storage device.

- Make sure that the format of the USB storage device is compatible with the home theater.
- Make sure that the file system on the USB storage device is supported by the home theater.

#### 'No entry' or 'x' sign appears on the TV.

- The operation is not possible.

## 9 Notice

This section contains the legal and trademark notices.

---

### Copyright



**Be responsible  
Respect copyrights**

This item incorporates copy protection technology that is protected by U.S. patents and other intellectual property rights of Rovi Corporation. Reverse engineering and disassembly are prohibited.

---

### About Progressive Scan

Consumers should note that not all high definition television sets are fully compatible with this product and may cause artifacts to be displayed in the picture. In case of 525 or 625 progressive scan picture problems, it is recommended that the user switch the connection to the 'standard definition' output. If there are questions regarding our TV set compatibility with this model 525p and 625p DVD player, please contact our customer service center.

---

### Trademarks



Manufactured under license from Dolby Laboratories. Dolby and the double-D symbol are trademarks of Dolby Laboratories.



DivX<sup>®</sup>, DivX Ultra<sup>®</sup>, DivX Certified<sup>®</sup> and associated logos are trademarks of Rovi Corporation or its subsidiaries and are used under license.

DivX Ultra<sup>®</sup> Certified to play DivX<sup>®</sup> video with advanced features and premium content.

ABOUT DIVX VIDEO: DivX<sup>®</sup> is a digital video format created by DivX, LLC, a subsidiary of Rovi Corporation. This is an official DivX Certified<sup>®</sup> device that plays DivX video. Visit [divx.com](http://divx.com) for more information and software tools to convert your files into DivX videos.

ABOUT DIVX VIDEO-ON-DEMAND: This DivX Certified<sup>®</sup> device must be registered in order to play purchased DivX Video-on-Demand (VOD) movies. To obtain your registration code, locate the DivX VOD section in your device setup menu. Go to [vod.divx.com](http://vod.divx.com) for more information on how to complete your registration.

**CLASS 1  
LASER PRODUCT**

# 10 Index

## A

audio from TV and other devices	8
audio language for discs	13
auto standby	14

## B

batteries	16
-----------	----

## C

change password	13
character set	10
connect analog audio cable	8
connect coaxial audio cable	8
connect component video (red/blue/green)	7
connect FM antenna	4, 12
connect home theater	6
connect optical audio cable	8
connect speakers	6
connect to TV	7
connectors	4
consumer support	3
control play buttons	10

## D

disc menu	13
discs	9
display brightness	14
display menu for MP3/JPEG	14
display menu for VCD/SVCD	14
disposal	3
DivX	11, 15
DivX subtitles	10

## H

Home menu	9
-----------	---

## L

language settings	13
lock disc	14

## M

main unit overview	4
menu language for discs	13
musical slideshow	11

## N

night mode	13
------------	----

## O

onscreen menu language	13
------------------------	----

## P

parental control	13
parental ratings	13
password	13
PBC (play back control)	14
picture options	11
picture settings	13
product serial number	3
program radio stations	12
Progressive Scan	9

## R

radio	12
recycling	3
remote control overview	5
repeat mode	10
restore default settings	14
rotate pictures	10

---

## S

screen saver	14
setup menu	13
sleep timer	14
slideshow	11
software version	14
sound mode	12
speakers placement	6
speakers setup	8
specifications	15
subtitle language for discs	13
supported file format	15
supported media formats	15
surround sound	12
synchronize picture and sound	10

---

## T

time search	11
titles	11
trademarks	18
troubleshooting	17
tuning grid	12

---

## U

update software	14
USB storage device	11

---

## V

video options	11
video resolution	13
VOD code for DivX	11

# Language Code

Abkhazian	6566	Inupiaq	7375	Pushto	8083
Afar	6565	Irish	7165	Russian	8285
Afrikaans	6570	Íslenska	7383	Quechua	8185
Amharic	6577	Italiano	7384	Raeto-Romance	8277
Arabic	6582	Ivrit	7269	Romanian	8279
Armenian	7289	Japanese	7465	Rundi	8278
Assamese	6583	Javanese	7486	Samoan	8377
Avestan	6569	Kalaallisut	7576	Sango	8371
Aymara	6589	Kannada	7578	Sanskrit	8365
Azerhājani	6590	Kashmiri	7583	Sardinian	8367
Bahasa Melayu	7783	Kazakh	7575	Serbian	8382
Bashkir	6665	Kernewek	7587	Shona	8378
Belarusian	6669	Khmer	7577	Shqip	8381
Bengali	6678	Kinyarwanda	8287	Sindhi	8368
Bihari	6672	Kirghiz	7589	Sinhalese	8373
Bislama	6673	Komi	7586	Slovensky	8373
Bokmål, Norwegian	7866	Korean	7579	Slovenian	8376
Bosanski	6683	Kuanyama; Kwanyama	7574	Somali	8379
Brezhoneg	6682	Kurdish	7585	Sotho; Southern	8384
Bulgarian	6671	Lao	7679	South Ndebele	7882
Burmese	7789	Latina	7665	Sundanese	8385
Castellano, Español	6983	Latvian	7686	Suomi	7073
Catalán	6765	Letzburgesch;	7666	Swahili	8387
Chamorro	6772	Limburgan; Limburger	7673	Swati	8383
Chechen	6769	Lingala	7678	Svenska	8386
Chewa; Chichewa; Nyanja	7889	Lithuanian	7684	Tagalog	8476
中文	9072	Luxembourgish;	7666	Tahitian	8489
Chuang; Zhuang	9065	Macedonian	7775	Tajik	8471
Church Slavīc; Slavonic	6785	Malagasy	7771	Tamil	8465
Chuvash	6786	Magyar	7285	Tatar	8484
Corsican	6779	Malayalam	7776	Telugu	8469
àesky	6783	Maltese	7784	Thai	8472
Dansk	6865	Manx	7186	Tibetan	6679
Deutsch	6869	Maori	7773	Tigrinya	8473
Dzongkha	6890	Marathi	7782	Tonga (Tonga Islands)	8479
English	6978	Marshallese	7772	Tsonga	8483
Esperanto	6979	Moldavian	7779	Tswana	8478
Estonian	6984	Mongolian	7778	Türkçe	8482
Euskara	6985	Nauru	7865	Turkmen	8475
ǻĭĕŌĔĭ	6976	Navaho; Navajo	7886	Twi	8487
Faroese	7079	Ndebele, North	7868	Uighur	8571
Français	7082	Ndebele, South	7882	Ukrainian	8575
Frysk	7089	Ndonga	7871	Urdu	8582
Fijian	7074	Nederlands	7876	Uzbek	8590
Gaelic; Scottish Gaelic	7168	Nepali	7869	Vietnamese	8673
Gallegan	7176	Norsk	7879	Volapuk	8679
Georgian	7565	Northern Sami	8369	Walloon	8765
Gikuyu; Kikuyu	7573	North Ndebele	7868	Welsh	6789
Guarani	7178	Norwegian Nynorsk;	7878	Wolof	8779
Gujarati	7185	Occitan; Provençal	7967	Xhosa	8872
Hausa	7265	Old Bulgarian; Old Slavonic	6785	Yiddish	8973
Herero	7290	Oriya	7982	Yoruba	8979
Hindi	7273	Oromo	7977	Zulu	9085
Hiri Motu	7279	Ossetian; Ossetic	7983		
Hrwatski	6779	Pali	8073		
Ido	7379	Panjabi	8065		
Interlingua (International)	7365	Persian	7065		
Interlingue	7365	Polski	8076		
Inuktitut	7385	Português	8084		

