

# Always there to help you

Register your product and get support at  
[www.philips.com/welcome](http://www.philips.com/welcome)



BT2110



## User manual

# PHILIPS



# Contents

---

<b>1 Important</b>	2
Safety	2

---

<b>2 Your micro system</b>	3
Introduction	3
What's in the box	3
Overview of the main unit	4
Overview of the remote control	5

---

<b>3 Get started</b>	6
Connect power	6
Demonstrate the features	6
Prepare the remote control	6
Set clock	6
Turn on	7

---

<b>4 Play</b>	8
Play from USB	8
Control play	8
Skip to a track	8
Program tracks	8

---

<b>5 Use the Bluetooth devices</b>	9
Play from Bluetooth-enabled devices	9
Connect a device through NFC	9

---

<b>6 Listen to the radio</b>	11
Tune to a radio station	11
Program radio stations automatically	11
Program radio stations manually	11
Select a preset radio station	11

---

<b>7 Other features</b>	12
Set the alarm timer	12
Set the sleep timer	12
Adjust the display brightness	12
Listen to an external device	12

---

<b>8 Product information</b>	13
Specifications	13
USB playability information	13

---

<b>9 Troubleshooting</b>	15
--------------------------	----

---

<b>10 Notice</b>	17
Compliance	17
Important notes for users in the U.K.	17
Care of the environment	17
Trademark notice	18

# 1 Important

---

## Safety

---

### Safety



#### Warning

- Never remove the casing of this apparatus.
- Never lubricate any part of this apparatus.
- Never look into the laser beam inside this apparatus.
- Never place this apparatus on other electrical equipment.
- Keep this apparatus away from direct sunlight, naked flames or heat.
- Ensure that you always have easy access to the power cord, plug or adaptor to disconnect the apparatus from the power.

- The device shall not be exposed to dripping or splashing.
- Do not place any source of danger on the device (e.g. liquid filled objects, lit candles).
- Where the MAINS plug or an appliance coupler is used as the disconnect device, the disconnect device shall remain readily operable.
- Make sure that there is enough free space around the product for ventilation.
- Only use attachments/accessories specified by the manufacturer.



#### Warning

- Never remove the casing of this device.
- Never lubricate any part of this device.
- Never place this device on other electrical equipment.
- Keep this device away from direct sunlight, naked flames or heat.
- Never look into the laser beam inside this device.
- Ensure that you always have easy access to the power cord, plug, or adaptor to disconnect this device from the power.

## 2 Your micro system

Congratulations on your purchase, and welcome to Philips! To fully benefit from the support that Philips offers, register your product at [www.philips.com/welcome](http://www.philips.com/welcome).

---

### Introduction

**With this unit, you can:**

- enjoy audio Bluetooth-enabled devices, NFC enabled devices, USB storage devices, or other external devices;
- listen to FM radio stations.

**You can enrich sound output with below sound effect:**

- Digital Sound Control (DSC)
  - DSC 1: Balanced
  - DSC 2: Clear
  - DSC 3: Powerful
  - DSC 4: Warm
  - DSC 5: Bright

**The unit supports these media formats:**



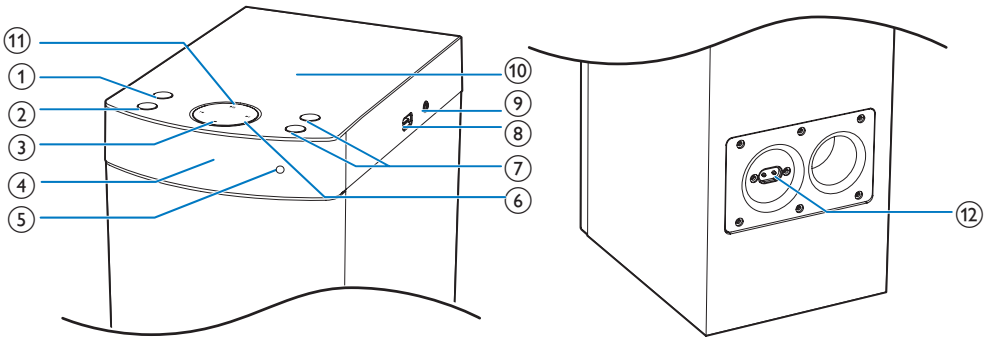
---





### What's in the box


Check and identify the contents of your package:

- Main unit
- Remote control (with one AAA battery)
- AC power cord
- AC power cord(UK)
- Short user manual
- Safety and notice

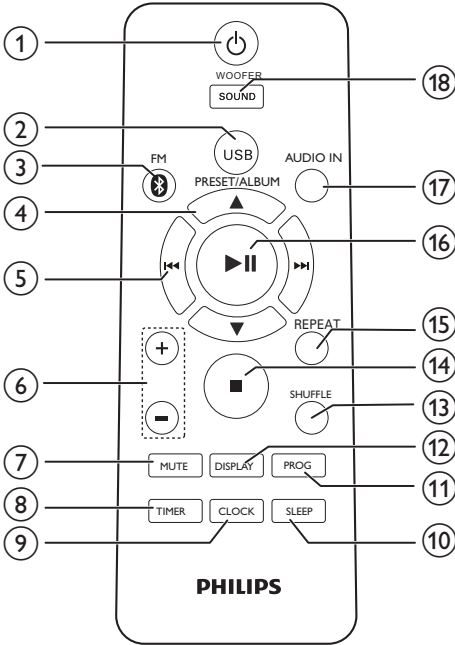
## Overview of the main unit



- ①  **Power**
- Turn the unit on or off.
  - Switch to standby mode or Eco standby mode.
- ② **SOURCE**
- Select a source: USB, BT, AUDIO IN or FM.
- ③ 
- Stop play or erase a program.
- ④ **Display panel**
- Show current status.
- ⑤ **Bluetooth indicator**
- Show Bluetooth status.
- ⑥ 
- Skip to the previous/next track.
  - Select a preset radio station.
- ⑦ **VOLUME +/-**
- Adjust volume.
- ⑧ 
- Jack for a USB device.
- ⑨ **AUDIO IN**
- Audio input jack (3,5mm) for an external audio device.
- ⑩ **NFC tag**
- Connect to a device with NFC feature.

- ⑪ 
- Start, pause, or resume play.
- ⑫ **AC MAIN~**
- Power supply socket.

## Overview of the remote control



- ①
  - Turn the unit on or off.
  - Switch to standby mode or Eco power standby mode.
- ② **USB**
  - Select USB source.
- ③ **\* /FM**
  - Select Bluetooth source.
  - Select FM source.
- ④ **PRESET/ALBUM ▲ / ▼**
  - Select a preset radio station.
  - Skip to previous/next album.
- ⑤ **◀◀ / ▶▶**
  - Skip to the previous/next track.
  - Search within a track/disc/USB.
  - Tune to a radio station.
  - Adjust time.

- ⑥ **VOL +/-**
  - Adjust volume.
- ⑦ **MUTE**
  - Mute or restore volume.
- ⑧ **TIMER**
  - Set the alarm timer.
- ⑨ **CLOCK**
  - Set the clock.
  - View clock information.
- ⑩ **SLEEP**
  - Set sleep timer.
- ⑪ **PROG**
  - Program tracks.
  - Program radio stations.
  - Auto store FM radio stations.
- ⑫ **DISPLAY**
  - Adjust display brightness.
- ⑬ **SHUFFLE**
  - Play tracks randomly.
- ⑭
  - Stop play or erase a program.
- ⑮ **REPEAT**
  - Play a track or all tracks repeatedly.
- ⑯ **▶▶**
  - Start, pause, or resume play.
- ⑰ **AUDIO IN**
  - Select AUDIO IN source.
- ⑱ **SOUND/WOOFER**
  - Press to select sound effect with Digital Sound Control (DSC).
  - Press and hold to adjust the volume of the woofer.

# 3 Get started

## ! Caution

- Use of controls or adjustments or performance of procedures other than herein may result in hazardous radiation exposure or other unsafe operation.

Always follow the instructions in this chapter in sequence.

If you contact Philips, you will be asked for the model and serial number of this apparatus. The model number and serial number are on the back of the apparatus. Write the numbers here:

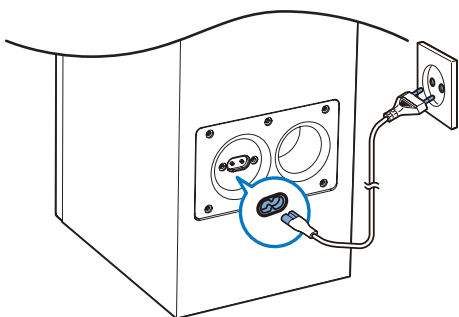
Model No. \_\_\_\_\_

Serial No. \_\_\_\_\_

## Connect power

### ! Caution

- Risk of product damage! Ensure that the power supply voltage corresponds to the voltage printed on the back or the underside of the unit.
- Risk of electric shock! When you unplug the AC power cord, always pull the plug from the socket. Never pull the cord.
- Before you connect the AC power cord, ensure that you have completed all other connections.



## Demonstrate the features

In the standby mode, you can demonstrate features by pressing **■**.

- ↳ The features are displayed one by one across the display panel.
- To turn off the demonstration, press **■** again.

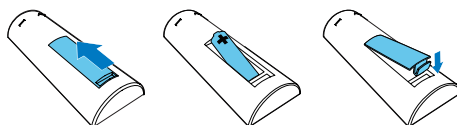
## Prepare the remote control

### ! Caution

- Risk of explosion! Keep batteries away from heat, sunshine or fire. Never discard batteries in fire.
- Risk of decreased battery life! Never mix different brands or types of batteries.
- Risk of product damage! When the remote control is not used for long periods, remove the batteries.

To insert the remote control battery:

- 1 Open the battery compartment.
- 2 Insert the supplied AAA battery with correct polarity (+/-) as indicated.
- 3 Close the battery compartment.



## Set clock

- 1 In standby mode, press and hold **CLOCK** on the remote control for more than two seconds.  
↳ [24H] or [12H] hour format is displayed.
- 2 Press **⏪ / ⏩** to select [24H] or [12H] hour format.
- 3 press **CLOCK** to confirm.  
↳ The hour digits are displayed and begin to blink.



4 Repeat steps 2-3 to set hour and minute.



#### Note

- If no button is pressed in 90 seconds, the system exits clock setting mode automatically.



#### Tip

- You can view clock information in power-on mode by pressing **CLOCK**.

---

## Turn on

Press  $\odot$ .

- ↳ The unit switches to the last selected source.

---

## Switch to standby mode

Press  $\odot$  again to switch the unit to standby mode.

- ↳ The clock (if set) is displayed on the panel.

### Switch to ECO standby mode:

Press and hold  $\odot$  for more than two seconds.

- ↳ The display panel is dimmed.



#### Note

- The unit switches to Eco Power Standby mode after 15 minutes in standby mode.

### Switch between standby mode and ECO standby mode:


Press and hold  $\odot$  for more than two seconds.

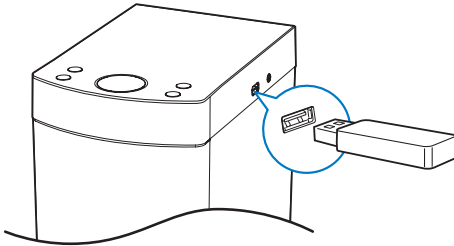
# 4 Play

## Play from USB

### Note

- Make sure that the USB device contains playable audio content.

- 1 Press **USB** to select the **USB** source.
- 2 Insert a USB device into the  socket.  
↳ Play starts automatically. If not, press **▶||**.



## Control play

<b>▲ / ▼</b>	Select a folder.
<b>◀◀ / ▶▶</b>	Skip to the previous or next track. Press and hold to rewind a track or search forward fast.
<b>▶  </b>	Pause or resume play.
<b>■</b>	Stop play.
<b>REPEAT</b>	Play a track or all tracks repeatedly.
<b>SHUFFLE</b>	Play tracks randomly.
<b>VOL +/-</b>	Increase or decrease the volume.
<b>MUTE</b>	Mute or restore sound.
<b>SOUND</b>	Enrich sound effect with DSC: balanced, clear, powerful, warm, and bright.
<b>WOOFER</b>	Enable the woofer.
<b>DISPLAY</b>	Adjust display brightness.

## Skip to a track

For **USB**:

- 1 Press **▲ / ▼** to select an album or a folder.
- 2 Press **◀◀ / ▶▶** to select a track or a file.

## Program tracks

You can program a maximum of 20 tracks.

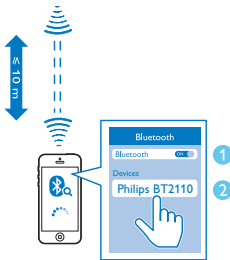
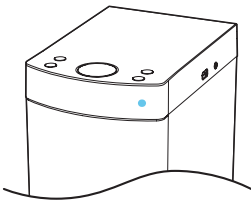
- 1 Press **PROG** to activate the program mode.
- 2 For MP3 tracks, press **▲ / ▼** to select an album.
- 3 Press **◀◀ / ▶▶** to select a track, and then press **PROG** to confirm.
- 4 Repeat steps 2-3 to program more tracks.
- 5 Press **▶||** to play the programmed tracks.  
↳ During play, **[PROG]** (program) is displayed.
  - To erase the program, in the stop position, press **■**.

# 5 Use the Bluetooth devices

## Play from Bluetooth-enabled devices

### Note

- The effective operation range between the unit and your Bluetooth enabled device is approximately 10 meters (30 feet).
- Any obstacle between the system and the device can reduce the operational range.
- Compatibility with all Bluetooth devices is not guaranteed.



- 1 Press **SOURCE** repeatedly to select the **Bluetooth** source.
  - ↳ **[BT]** (Bluetooth) is displayed.
  - ↳ The Bluetooth indicator flashes blue.
- 2 On your device that supports Advanced Audio Distribution Profile (A2DP), enable Bluetooth and search for Bluetooth devices that can be paired (refer to the user manual of the device).

- 3 Select '**Philips BT2110**' on your Bluetooth enabled device and if necessary input '0000' as the pairing password.
  - ↳ After successful pairing and connection, the Bluetooth indicator turns solid blue, and the speaker beeps twice.
- 4 Play audio on the connected device.
  - ↳ Audio streams from your Bluetooth enabled device to this unit.

### Tip

- The micro music system can memorize up to 8 previously connected Bluetooth devices.

### To disconnect the Bluetooth-enabled device:

- Deactivate Bluetooth on your device; or
- Move the device beyond the communication range.

### To clear Bluetooth pairing history:

- Press and hold **▶||** on the main set for 10 seconds.
  - ↳ The current Bluetooth connection is disconnected.
  - ↳ After successful clearing, beep sounds

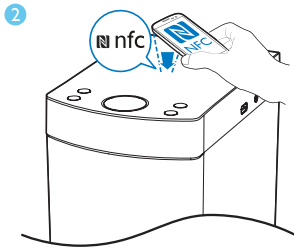
## Connect a device through NFC

Near Field Communication (NFC) is a technology that enables short-range wireless communication between various NFC compatible devices, such as mobile phones and IC tags.

If your Bluetooth device supports NFC, you can connect it with this micro music system easily.

- 1 Enable the NFC feature on your Bluetooth enabled device (see the user manual of the device for details).
- 2 Touch the NFC tag on the top of the micro music system with back of your Bluetooth device.

- 3 On your Bluetooth device, accept the pairing request with "BT2110". If necessary, input "0000" as the pairing password.
- 4 Follow the on-screen instructions to complete the pairing and connection.
  - ↳ After successful pairing and connection, the micro music system beeps twice and the Bluetooth indicator turns solid blue.



**Note**

- In standby/ECO standby mode or FM/USB/AUDIO IN mode, when touching the NFC tag with the back of your NFC enabled device, the micro music system automatically switches to BT mode.

LED indicator	Description
Flashing blue	Connecting or waiting for connection
Solid blue	Connected


## 6 Listen to the radio

### Tune to a radio station



Tip

- Position the antenna as far as possible from TV, VCR, or other radiation source.
- For optimal reception, fully extend and adjust the position of the antenna.

- 1 Press **FM**  repeatedly to select the **FM** source.
- 2 Press and hold **◀◀** / **▶▶** for more than two seconds.
  - ↳ The radio tunes to a station with strong reception automatically.

- 3 Repeat step 2 to tune to more stations.

**To tune to a weak station:**

Press **◀◀** / **▶▶** repeatedly until you find optimal reception.

### Program radio stations manually

- 1 Tune to a radio station.
- 2 Press **PROG**, and then press **▲** / **▼** to select a number from 1–20.
- 3 Press **PROG** to confirm.
  - ↳ The preset number and the frequency of the preset station are displayed.
- 4 Repeat steps 2-3 to program more stations.



Note

- To overwrite a programmed station, store another station in its place.

### Select a preset radio station

In tuner mode, press **▲** / **▼** to select a preset number.

### Program radio stations automatically



Note

- You can program a maximum of 20 preset radio stations (FM).

In tuner mode, press and hold **PROG** for more than two seconds to activate automatic programming.

- ↳ All available stations are programmed in the order of waveband reception strength.
- ↳ The first programmed radio station is broadcast automatically.

# 7 Other features

## Set the alarm timer

This unit can be used as an alarm clock. You can select USB, or FM as alarm source.

### Note

- Make sure that you have set the clock correctly.

- 1 In standby mode, press and hold **TIMER** for more than two seconds.  
↳ The hour digits are displayed and begin to blink.
- 2 Press **◀◀ / ▶▶** repeatedly to set hour.
- 3 Press **TIMER** to confirm.  
↳ The minute digits are displayed and begin to blink.
- 4 Repeat steps 2-3 to set minute, select a source (**USB**, or **FM**), and adjust volume.

### Note

- If no button is pressed in 90 seconds, the system exits timer setting mode automatically.

### To activate or deactivate the alarm timer:

Press **TIMER** repeatedly to activate or deactivate the alarm.

- ↳ If timer is activated, **⌚** is displayed.

### Tip

- If USB source is selected, but no USB connected, the system switches to the tuner source automatically.

## Set the sleep timer

To set the sleep timer; in turn on mode, press **SLEEP** repeatedly to select a set period of time (in minutes).

- ↳ When sleep timer is activated, **zZ** is displayed. Otherwise, **zZ** disappears.

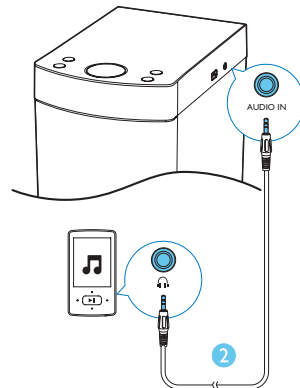
## Adjust the display brightness

Press **DISPLAY** repeatedly to adjust the display brightness.

## Listen to an external device

You can listen to an external device through this music system with an audio in cable.

- 1 Press **AUDIO IN** to select **AUDIO IN** source.
- 2 Connect an audio in cable (not supplied) between:
  - **AUDIO IN** jack (3.5 mm) on the music system,
  - and the headphone jack on an external device.
- 3 Start to play the device (see the device user manual).



# 8 Product information

## Note

- Product information is subject to change without prior notice.

## Specifications

### Amplifier

Maximum Output Power	80 W
Frequency Response	60 Hz - 16 kHz; ±3 dB
Signal to Noise Ratio	>70 dBA
Total Harmonic Distortion	<1%
Aux Input	600 mV RMS

### Speakers

Speaker Impedance	2 × 8 ohm + 4 ohm
Speaker Driver	2.75" full range + 5.25" sub woofer
Speaker Sensitivity	>83 dB/m/W

### Bluetooth

Bluetooth Version	V2.1 + EDR
Bluetooth Frequency Band	2.4 GHz ~ 2.48 GHz ISM Band
Bluetooth Range	10 m (free space)

### Tuner (FM)

Tuner Tuning Range	87.5-108 MHz
Tuner Tuning grid	50 KHz
Tuner Sensitivity	
- Mono, 26dB S/N Ratio	<22 dBf
- Stereo, 46dB S/N Ratio	<45 dBf
Search Selectivity	<30 dBf
Total Harmonic Distortion	<3%
Signal to Noise Ratio	>45 dBA

### USB

USB Direct Version	2.0 full speed
USB 5V Power	≤ 1A

### General information

AC power	100-240 V~, 50/60 Hz
Operation Power Consumption	40 W
Eco Standby Power Consumption	<0.5 W
Dimensions (W × H × D)	160 × 850 × 208 mm
Weight	10.2 kg

## USB playability information

### Compatible USB devices:

- USB flash memory (USB2.0 or USB1.1)
- USB flash players (USB2.0 or USB1.1)
- memory cards (requires an additional card reader to work with this unit)

### Supported USB formats:

- USB or memory file format: FAT12, FAT16, FAT32 (sector size: 512 bytes)
- MP3 bit rate (data rate): 32-320 Kbps and variable bit rate
- Directory nesting up to a maximum of 8 levels
- Number of albums/ folders: maximum 99
- Number of tracks/titles: maximum 999

- File name in Unicode UTF8 (maximum length: 32 bytes)

**Unsupported USB formats:**

- Empty albums: an empty album is an album that does not contain MP3/WMA files, and will not be shown in the display.
- Unsupported file formats are skipped. For example, word documents (.doc) or MP3 files with extension .dlf are ignored and not played.
- WMA, AAC, WAV, PCM audio files
- DRM protected WMA files (.wav, .m4a, .m4p, .mp4, .aac)
- WMA files in Lossless format



# 9 Troubleshooting



## Warning

- Never remove the casing of this device.

To keep the warranty valid, never try to repair the system yourself.

If you encounter problems when using this device, check the following points before requesting service. If the problem remains unsolved, go to the Philips Web page ([www.philips.com/support](http://www.philips.com/support)). When you contact Philips, make sure that the device is nearby and the model number and serial number are available.

### No power

- Make sure that the AC power cord of the device is connected properly.
- Make sure that there is power at the AC outlet.
- As a power-saving feature, the system switches off automatically 15 minutes after track play reaches the end and no control is operated.

### No sound or poor sound

- Adjust the volume.
- Check that the speakers are connected correctly.
- Check if the stripped speaker wires are clamped.

### No response from the unit

- Disconnect and reconnect the AC power plug, then turn on the unit again.

### Remote control does not work

- Before you press any function button, first select the correct source with the remote control instead of the main unit.
- Reduce the distance between the remote control and the unit.
- Insert the battery with its polarities (+/- signs) aligned as indicated.
- Replace the battery.
- Aim the remote control directly at the sensor on the front of the unit.

### Cannot display some files in USB device

- The number of folders or files in the USB device has exceeded a certain limit. This phenomenon is not a malfunction.
- The formats of these files are not supported.

### USB device not supported

- The USB device is incompatible with the unit. Try another one.

### Poor radio reception

- Increase the distance between the unit and your TV or VCR.
- Fully extend the FM antenna.

### Music playback is unavailable on this unit even after successful Bluetooth connection.

- The device cannot be used to play music through this unit wirelessly.

### The audio quality is poor after connection with a Bluetooth-enabled device.

- The Bluetooth reception is poor. Move the device closer to this unit or remove any obstacle between them.

### Bluetooth cannot be connected with this unit.

- The device does not support the profiles required for this unit.
- The Bluetooth function of the device is not enabled. Refer to the user manual of the device to find out how to enable the function.
- This unit is not in pairing mode.
- This unit is already connected with another Bluetooth-enabled device. Disconnect that device and then try again.

### The paired mobile device connects and disconnects constantly.

- The Bluetooth reception is poor. Move the device closer to this unit or remove any obstacle between them.
- Some mobile phones may connect and disconnect constantly when you make or end calls. This does not indicate any malfunction of this unit.
- For some devices, the Bluetooth connection may be deactivated automatically as a power-saving feature. This does not indicate any malfunction of this unit.

**Timer does not work**

- Set the clock correctly.
- Switch on the timer.

**Clock/timer setting erased**

- Power has been interrupted or the power cord has been disconnected.
- Reset the clock/timer.

# 10 Notice

Any changes or modifications made to this device that are not expressly approved by WOOX Innovations may void the user's authority to operate the equipment.

---

## Compliance

# CE 0890

Hereby, WOOX Innovations declares that this product is in compliance with the essential requirements and other relevant provisions of Directive 1999/5/EC. You can find the Declaration of Conformity on [www.philips.com/support](http://www.philips.com/support).

---

## Important notes for users in the U.K.

This information applies only to products with a UK mains plug.

This product is fitted with an approved molded plug. If you replace the fuse, use one with:

- the ratings shown on the plug,
- a BS 1362 approval, and
- the ASTA approval mark.

Contact your dealer if you are not sure about what type of fuse to use.

Caution: To conform with the EMC directive (2004/108/EC), do not detach the plug from the power cord.

---

## Care of the environment



Your product is designed and manufactured with high quality materials and components, which can be recycled and reused.



When this crossed-out wheeled bin symbol is attached to a product it means that the product is covered by the European Directive 2002/96/EC. Please inform yourself about the local separate collection system for electrical and electronic products.

Please act according to your local rules and do not dispose of your old products with your normal household waste. Correct disposal of your old product helps to prevent potential negative consequences for the environment and human health.



Your product contains batteries covered by the European Directive 2006/66/EC, which cannot be disposed with normal household waste. Please inform yourself about the local rules on separate collection of batteries because correct disposal helps to prevent negative consequences for the environmental and human health.

### Environmental information

All unnecessary packaging has been omitted. We have tried to make the packaging easy to separate into three materials: cardboard (box), polystyrene foam (buffer) and polyethylene (bags, protective foam sheet.)

Your system consists of materials which can be recycled and reused if disassembled by a specialized company. Please observe the local regulations regarding the disposal of packaging materials, exhausted batteries and old equipment.

---

## Trademark notice



Be responsible  
Respect copyrights

This item incorporates copy protection technology that is protected by U.S. patents and other intellectual property rights of Rovi Corporation. Reverse engineering and disassembly are prohibited.



The Bluetooth® word mark and logos are registered trademarks owned by Bluetooth SIG, Inc. and any use of such marks by WOOX Innovations is under license.



© 2014 CSR plc and its group companies. The aptX® mark and the aptX logo are trade marks of CSR plc or one of its group companies and may be registered in one or more jurisdictions.



The N Mark is a trademark or registered trademark of NFC Forum, Inc. in the United States and in other countries.



Note

- The type plate is located on the back of the device.





Specifications are subject to change without notice.  
2014 © WOOX Innovations Limited. All rights reserved.  
Philips and the Philips' Shield Emblem are registered  
trademarks of Koninklijke Philips N.V. and are used by WOOX  
Innovations Limited under license from Koninklijke Philips N.V.

BT2110\_10\_UM\_V1.0

