

Register your product and get support at

www.philips.com/welcome

CSS9211



User manual

Benutzerhandbuch

Mode d'emploi

Brukerhåndbok

Manual del usuario

Användarhandbok

Εγχειρίδιο χρήσης

Felhasználói kézikönyv

Manual de utilizare

Brugervejledning

Gebruiksaanwijzing

Manuale utente

Manual do utilizador

Käyttöopas

Kullanım kılavuzu

Průručka pro uživatele

Instrukcja obsługi

Průručka uživateľa

PHILIPS

Contents

1 Help and support	2
FAQs	2
Contact Philips	2

2 Notice	2
Compliance	2
Mains fuse	2
Trademarks	3

3 Important	3
Safety	3
Care for your product	4
Care of the environment	4

4 Your SoundHub	5
Main unit	5
Subwoofer	5
Remote control	5

5 Connect your SoundHub	6
Speakers	6
Connectors	7
Connect audio from TV and other devices	8
Listen to a connected device	9

6 Use your SoundHub	9
Choose your sound	9
MP3 player	10

7 Change settings	11
Setup menu options and settings	11
Apply factory settings	11

8 Product specifications	12
---------------------------------	----

9 Troubleshooting	13
--------------------------	----

10 Index	13
-----------------	----

1 Help and support

FAQs

If you have a problem, refer to the frequently asked questions (FAQs) for this SoundBar at www.philips.com/support.

If you still need help, contact Philips Consumer Care in your country.



Warning

- Do not attempt to repair your SoundBar yourself. This may cause severe injury, irreparable damage to your SoundBar, or void your warranty.

Contact Philips

If you contact Philips, you will be asked for the model and serial number of your product. The model number and serial number are on the back or bottom of your product. Note the numbers before you call Philips:

Model No. _____

Serial No. _____

2 Notice

This section contains the legal and trademark notices.

Compliance



This product is in compliance with the essential requirements and other relevant provisions of Directives 2006/95/EC (Low Voltage), 2004/108/EC (EMC).

Mains fuse

This information applies only to products with a UK mains plug.

This product is fitted with an approved molded plug. If you replace the fuse, use one with:

- the ratings shown on the plug,
- a BS 1362 approval, and
- the ASTA approval mark.

Contact your dealer if you are not sure about what type of fuse to use.

Caution: To conform with the EMC directive (2004/108/EC), do not detach the plug from the power cord.

Trademarks



Manufactured under license under U.S. Patent Nos: 5,956,674; 5,974,380; 6,487,535 & other U.S. and worldwide patents issued & pending. DTS, the Symbol, & DTS and the Symbol together are registered trademarks & DTS Digital Surround and the DTS logos are trademarks of DTS, Inc. Product includes software. © DTS, Inc. All Rights Reserved.



Manufactured under license from Dolby Laboratories. Dolby and the double-D symbol are trademarks of Dolby Laboratories.

3 Important

Read and understand all instructions before you use your SoundHub. If damage is caused by failure to follow instructions, the warranty does not apply.

Safety

Risk of electric shock or fire!

- Never expose the product and accessories to rain or water. Never place liquid containers, such as vases, near the product. If liquids are spilt on or into the product, disconnect it from the power outlet immediately. Contact Philips Consumer Care to have the product checked before use.
- Never place the product and accessories near naked flames or other heat sources, including direct sunlight.
- Never insert objects into the ventilation slots or other openings on the product.
- Where the mains plug or an appliance coupler is used as the disconnect device, the disconnect device shall remain readily operable.
- Disconnect the product from the power outlet before lightning storms.
- When you disconnect the power cord, always pull the plug, never the cable.

Risk of short circuit or fire!

- Before you connect the product to the power outlet, ensure that the power voltage matches the value printed on the back or bottom of the product. Never connect the product to the power outlet if the voltage is different.

Risk of injury or damage to the SoundHub!

- For wall-mountable products, use only the supplied wall mount bracket. Secure the wall mount to a wall that can support the combined weight of the product and the wall mount. Koninklijke Philips Electronics N.V. bears no responsibility for improper wall mounting that results in accident, injury or damage.
- Never place the product or any objects on power cords or on other electrical equipment.
- If the product is transported in temperatures below 5°C, unpack the product and wait until its temperature matches room temperature before connecting it to the power outlet.
- Parts of this product can be made of glass. Handle with care to avoid injury and damage.

Risk of overheating!

- Never install this product in a confined space. Always leave a space of at least four inches around the product for ventilation. Ensure curtains or other objects never cover the ventilation slots on the product.

Risk of contamination!

- Do not mix batteries (old and new or carbon and alkaline, etc.).
- Remove batteries if they are exhausted or if the remote control is not to be used for a long time.
- Batteries contain chemical substances, they should be disposed of properly.

Risk of swallowing batteries!

- The product/remote control may contain a coin type battery, which can be swallowed. Keep the battery out of reach of children at all times!

Care for your product

Use only microfiber cloth to clean the product.

Care of the environment



Your product is designed and manufactured with high quality materials and components, which can be recycled and reused.



When this crossed-out wheeled bin symbol is attached to a product it means that the product is covered by the European Directive 2002/96/EC. Please inform yourself about the local separate collection system for electrical and electronic products.

Please act according to your local rules and do not dispose of your old products with your normal household waste.

Correct disposal of your old product helps to prevent potential negative consequences for the environment and human health.

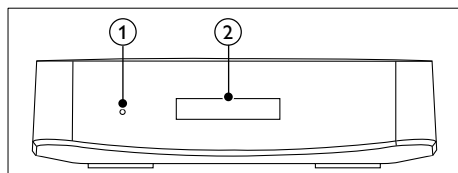


Your product contains batteries covered by the European Directive 2006/66/EC, which cannot be disposed with normal household waste. Please inform yourself about the local rules on separate collection of batteries because correct disposal helps to prevent negative consequences for the environmental and human health.

4 Your SoundHub

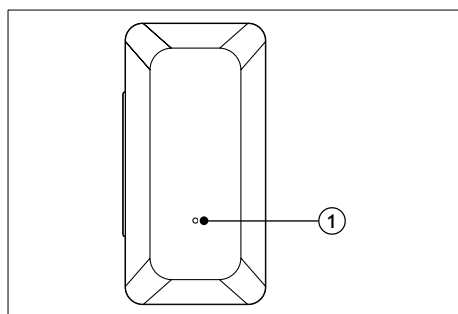
Congratulations on your purchase, and welcome to Philips! To fully benefit from the support that Philips offers, register your SoundHub at www.philips.com/welcome.

Main unit



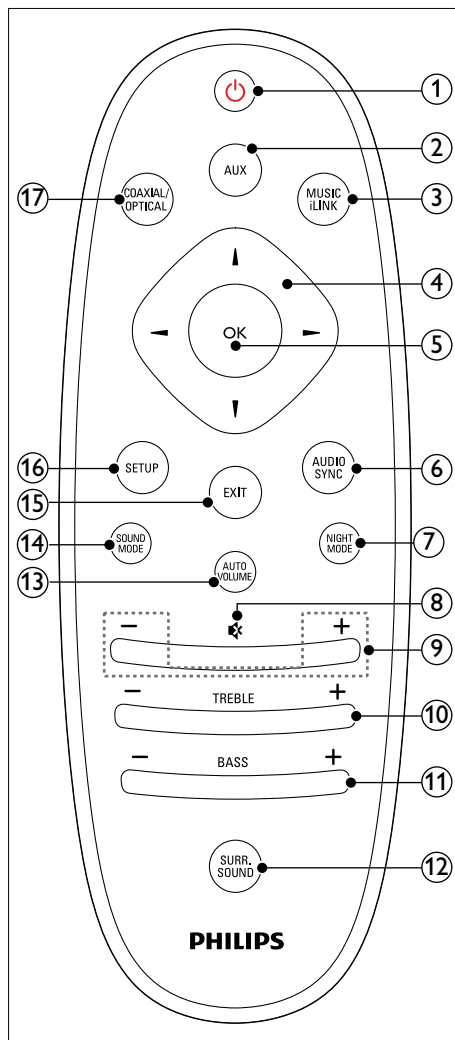
- ① Standby indicator
- ② Display panel

Subwoofer



- ① LED indicator
 - When the SoundHub is on standby, the **LED indicator** is red.
 - When the SoundHub is on, the **LED indicator** is white.

Remote control



- ① **⏻ (Standby-On)**
Switch the SoundHub on or to standby.
- ② **AUX**
Switch your audio source to the AUX connection.
- ③ **MUSIC iLINK**
Switch your audio source to the MUSIC iLINK connection.

- ④ **Navigation buttons (◀/▶/▲/▼)**
Navigate menus.
- ⑤ **OK**
Confirm an entry or selection.
- ⑥ **AUDIO SYNC**
Change the audio delay.
- ⑦ **NIGHT MODE**
Turn night mode on or off.
- ⑧ **⊘ (Mute)**
Mute or restore volume.
- ⑨ **+/- (Volume)**
Increase or decrease volume.
- ⑩ **TREBLE +/-**
Increase or decrease treble.
- ⑪ **BASS +/-**
Increase or decrease bass.
- ⑫ **SURR. SOUND**
Switch to auto, stereo, or 360 surround sound.
- ⑬ **AUTO VOLUME**
Turn auto volume on or off.
- ⑭ **SOUND MODE**
Select a sound mode.
- ⑮ **EXIT**
Exit a menu.
- ⑯ **SETUP**
Access the setup menu.
- ⑰ **COAXIAL/OPTICAL**
Switch your audio source to the coaxial or optical connection.

5 Connect your SoundHub

This section helps you connect your SoundHub to a TV and other devices.

For information about the basic connections of your SoundHub and accessories, see the quick start guide. For a comprehensive interactive guide, see www.connectivityguide.philips.com.

Note

- For identification and supply ratings, see the type plate at the back or bottom of the product.
- Before you make or change any connections, make sure that all devices are disconnected from the power outlet.

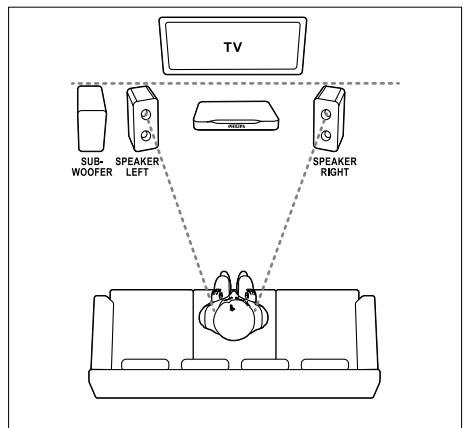
Speakers

Position, connect, and set up your speakers for best surround sound.

Position

Speaker position plays a critical role in setting up a surround sound effect.

For best results, place your speakers and the subwoofer as shown below.



Note

- Surround sound depends on various factors such as room shape and size, type of wall and ceiling, windows and reflective surfaces, and speaker acoustics.

Follow these general guidelines, and then set up your subwoofer:

- 1 Seating position:**
This is the center of your listening area.
- 2 SPEAKER LEFT** (speaker left) and **SPEAKER RIGHT** (speaker right) speakers:
Place the left and right speakers in the front, and equidistant from the main unit in an arc, so that the two speakers are at same distance from your seating position. For best effect, point the speakers towards the seating position and place the speakers close to the ear level (when seated).
- 3 SUBWOOFER** (subwoofer):
Place the subwoofer at least one meter to the left or right of the TV. Leave about ten centimeter clearance from the wall.

Connect

Connect your speakers and the subwoofer to your SoundHub as described in the quick start guide.

Setup

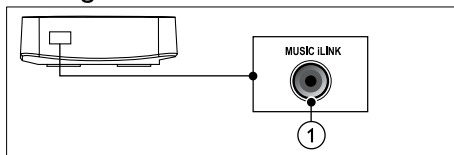
Set up your subwoofer through the setup menu.

- Press **SETUP** repeatedly to select **SUBW VOL** on the display panel (see 'Setup menu options and settings' on page 11).
- Press **OK**.
- Press the **Navigation buttons** (▲ / ▼) to change the volume.
- Press **OK** to confirm.
- Press **EXIT** to exit the menu.

Connectors

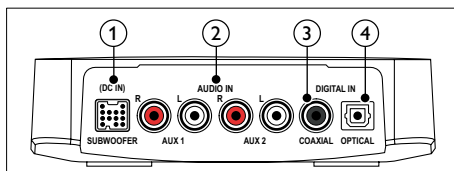
Connect other devices to your SoundHub.

Side right



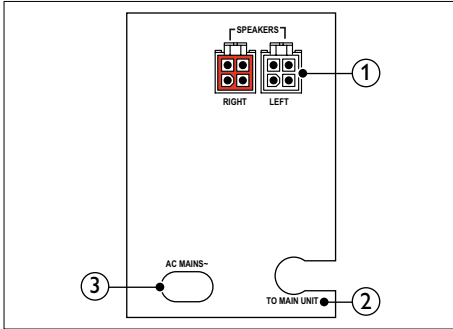
- 1 MUSIC iLINK**
Audio input from an MP3 player.

Main unit's rear connectors



- 1 SUBWOOFER**
Connect to the supplied subwoofer.
- 2 AUDIO IN-AUX 1/AUX 2**
Connect to an analog audio output on the TV or an analog device.
- 3 DIGITAL IN-COAXIAL**
Connect to a coaxial audio output on the TV or a digital device.
- 4 DIGITAL IN-OPTICAL**
Connect to an optical audio output on the TV or a digital device.

Subwoofer's rear connectors



- ① **SPEAKERS-RIGHT/LEFT**
Connect to the supplied speakers.
- ② **TO MAIN UNIT**
Connect to the main unit.
- ③ **AC MAINS~**
Connect to the power supply.

Connect audio from TV and other devices

Play audio from TV or other devices through your SoundHub.
Use the best quality connection available on other devices.

Note

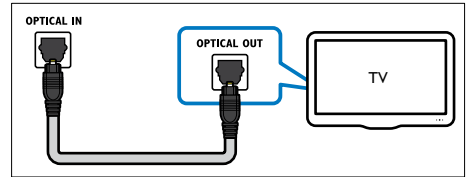
- The audio connections in this user manual are only recommendations. You can use other connections too.

Option 1: Connect audio through a digital optical cable

Best quality audio

Using an optical cable, connect the **OPTICAL** connector on your SoundHub to the **OPTICAL OUT** connector on the device.

The digital optical connector might be labeled **SPDIF**, **SPDIF OUT**, or **OPTICAL**.

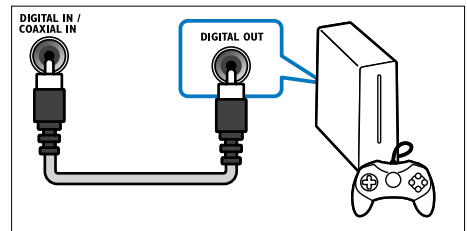


Option 2: Connect audio through a digital coaxial cable

Good quality audio

Using a coaxial cable, connect the **COAXIAL** connector on your SoundHub to the **COAXIAL/DIGITAL OUT** connector on the device.

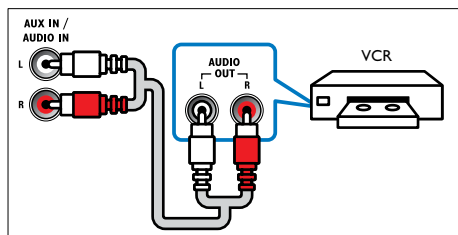
The digital coaxial connector might be labeled **DIGITAL AUDIO OUT**.



Option 3: Connect audio through analog audio cables

Basic quality audio

Using an analog cable, connect the **AUX** connectors on your SoundHub to the audio connectors on the device.



Listen to a connected device

Before you can listen to a connected device, select the source for the device.

Press **AUX**, **COAXIAL/OPTICAL**, or **MUSIC iLINK** on the remote control to cycle through and select an audio source, as shown in the following table.

Source button	Display text	Audio source
AUX	AUX1 or AUX2	AUX input
COAXIAL/OPTICAL	COAX IN or OPTI IN	Coaxial or Optical input
MUSIC iLINK	I-LINK	MP3 input

6 Use your SoundHub

This section helps you use the SoundHub to play audio from connected devices.

Before you start

- Make the necessary connections described in the quick start guide and the user manual.
- Switch the SoundHub to the correct source for other devices.

Choose your sound

This section helps you choose the ideal sound for your video or music.

Sound mode

Select predefined sound modes to suit your video or music.

Press **SOUND MODE** repeatedly to select a sound setting within three seconds on the display panel:

- **AUTO**: Automatically select **MOVIE** or **MUSIC** based on the sound stream.
- **MOVIE**: Enjoy a cinematic audio experience, specially enhanced for movies.
- **MUSIC**: Recreate the original recording environment of your music, in the studio or at a concert.
- **NEWS**: Hear every word with optimized speech and clear vocals.
- **GAMING**: Enjoy thrilling arcade sounds, ideal for action-packed video games or loud parties.
- **ORIGINAL**: Experience the original sound of your movies and music, without added sound effects.

Auto volume

Turn the auto volume on to keep the volume constant when you switch to a different source. Press **AUTO VOLUME** repeatedly to select a setting within three seconds on the display panel:

- **ON**: Turn on auto volume.
- **OFF**: Turn off auto volume.

Night mode

For quiet listening, decrease the volume of loud sounds when you play discs. Night mode is only available for Dolby encoded DVD and Blu-ray discs.

Press **NIGHT MODE** repeatedly to select a setting within three seconds on the display panel:

- **ON**: Turn on night mode.
- **OFF**: Turn off night mode.

Note

- If auto volume is set to **ON**, you cannot enable the night mode.

Synchronize picture and sound

If the audio and video are not synchronized, delay the audio to match the video.

- 1 Press **AUDIO SYNC**.
- 2 Within two seconds, press the **Navigation buttons** (▲ / ▼) to change the delay shown on the display panel.
- 3 Press **AUDIO SYNC** again to exit.

Surround sound mode

Experience an immersive audio experience with surround sound modes.

Press **SURR. SOUND** repeatedly to select a setting within three seconds on the display panel:

- **AUTO**: Surround sound based on the audio stream.
- **STEREO**: Two-channel stereo sound. Ideal for listening to music.
- **360SOUND**: Surround sound for best cinematic experience.

Note

- If you play a source with DTS, **DTS** is displayed on the display panel for two seconds.
- If you play a source with Dolby, **DOLBY D** is displayed on the display panel for two seconds.

Equalizer

Change the high frequency (treble) and low frequency (bass) settings of your SoundHub. Press **TREBLE +/-** or **BASS +/-** within three seconds to change the frequency shown on the display panel.

MP3 player

Connect your MP3 player to play your audio files or music.

What you need

- An MP3 player.
- A 3.5mm stereo audio cable.

Play music

- 1 Connect the MP3 player to the SoundHub as described in the Quick start guide.
- 2 Press **MUSIC iLINK**.
↳ **I-LINK** is displayed on the display panel.
- 3 Press the buttons on the MP3 player to select and play audio files or music.

7 Change settings

This section helps you to change the settings of your SoundHub.

! Caution

- The settings are already configured for optimal performance. Unless you have a reason to change a setting, we recommend that you keep the default setting.

Setup menu options and settings

Setup menu option	Setting for the option
SUBWVOL	+5, +4, +3, ..., 0, ..., -3, -4, -5
DISPLAY	BRIGHT DIM 1 DIM 2
SLEEP	OFF, 15 MIN, 30 MIN, 45 MIN, 60 MIN
VERSION	
RESET DEFAULT SETTINGS	

Setup menu options

- 1 Press **SETUP** repeatedly to cycle through the options on the display panel (see 'Setup menu options and settings' on page 11).
- 2 Select an option, and then press **OK**.
- 3 Press the **Navigation buttons** (▲ / ▼) to select a setting for the option, and then press **OK**.

☰ Note

- If you do not press a button within ten seconds, the setup menu exits.
- To exit the menu, press **EXIT**.
- **RESET DEFAULT SETTINGS** is available about forty seconds after the SoundHub is switched to on.

Display panel

Change the brightness of the SoundHub display panel.

- 1 Press **SETUP** repeatedly to select **DISPLAY** on the display panel (see 'Setup menu options and settings' on page 11).
- 2 Press **OK**.
- 3 Press the **Navigation buttons** (▲ / ▼) to select **BRIGHT**, **DIM 1**, or **DIM 2**, and then press **OK**.

Sleep timer

Set timers to switch the SoundHub to standby after a specified time.

- 1 Press **SETUP** repeatedly to select **SLEEP** on the display panel (see 'Setup menu options and settings' on page 11).
- 2 Press **OK**.
- 3 Press **Navigation buttons** (▲ / ▼) to set a sleep time on the display panel.
 - ↳ The sleep timer can be set up to 60 minutes. If the sleep timer is set to **OFF**, it switches off.

☰ Note

- If you switch the SoundHub to standby, the sleep time that you have set is canceled.

Apply factory settings

You can reset your SoundHub to the default settings programmed at the factory.

- 1 Press **SETUP** repeatedly to select **RESET DEFAULT SETTINGS** on the display panel.
- 2 Press **OK**.
 - ↳ **TO RESET PRESS OK** is displayed on the display panel.
- 3 Press **OK** again.
 - ↳ When the default settings are restored, **RESET OK** is displayed on the display panel, and the SoundHub automatically switches off and restarts.

8 Product specifications

Note

- Specifications and design are subject to change without notice.

Amplifier

- Total output power:
 - Europe and Asia: 400W RMS (30% THD)
 - Latin America: 320W RMS (10% THD)
- Frequency response: 20 Hz-20 kHz / ± 3 dB
- Signal-to-noise ratio: > 65 dB (CCIR) / (A-weighted)
- Input sensitivity:
 - AUX1, AUX2: 450 mV
 - Music iLink: 170 mV

Audio

- S/PDIF Digital audio input:
 - Coaxial: IEC 60958-3
 - Optical: TOSLINK

Main unit

- Dimensions (WxHxD): 150 x 41 x 126 mm
- Weight: 0.4 kg

Subwoofer

- Output power: 100W RMS (30% THD)
- Power supply: 220-240 V~, 50 Hz
- Power consumption: 55 W
- Standby power consumption: ≤ 0.5 W
- Impedance: 4 ohm
- Speaker drivers: 165 mm (6.5") woofer
- Frequency response: 20 Hz-150 Hz
- Dimensions (WxHxD): 196 x 397 x 357 mm
- Weight: 7.6 kg
- Cable length: 3 m

Speakers

- Output power: 2 x 150W RMS (30% THD)
- Speaker impedance: 6 ohm
- Drivers per speaker: 2 x 64 mm (2.5") full range woofer + 1 x 64 mm (2.5") woofer + 1 x 25.4 mm (1") soft-dome tweeter
- Frequency response: 150 Hz-20 kHz
- Dimensions (WxHxD): 99 x 247 x 117 mm
- Weight: 1.4 kg/each
- Cable length: 5 m

Remote control batteries

- 2 x AAA-R03-1.5 V

9 Troubleshooting

Warning

- Risk of electric shock. Never remove the casing of the product.

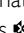
To keep the warranty valid, never try to repair the product yourself.

If you have problems using this product, check the following sections before you request service.

If you still have a problem, register your product and get support at www.philips.com/welcome.

Sound



No sound from SoundHub.

- Make sure that the SoundHub is not muted. Press  to select **MUTE OFF** on the display panel.
- Connect the audio cable from your SoundHub to your TV or other devices.
- Reset your SoundHub to its factory settings, and then switch it off and switch on again.
- On your remote control, press **AUX**, **COAXIAL/OPTICAL**, or **MUSIC iLINK** repeatedly to select the correct audio input on the display panel (see 'Listen to a connected device' on page 9).

Distorted sound or echo.

- If you play audio from the TV through the SoundHub, make sure that the TV is muted.

Audio and video are not synchronized.

- 1) Press **AUDIO SYNC**. 2) Within two seconds, press the **Navigation buttons** ( / ) to change the delay shown on the display panel. 3) Press **AUDIO SYNC** again to exit.

10 Index

A

amplifier	12
audio	
auto volume	10
night mode	10
sound mode	9
specifications	12
surround sound mode	10
audio source	
remote control	9

C

care	
environment	4
product	4
compliance	2
connect	
audio (analog cable)	9
audio (coaxial cable - digital)	8
audio (optical cable - digital)	8
audio from TV and other devices	8
speakers	6
connectors	
back connectors - main unit	7
back connectors - subwoofer	8
side connector	7

D

disable	
auto volume	10
night mode	10
display panel	5

E

enable	
auto volume	10
night mode	10

F	
factory settings	11
FAQs	2

L	
legal notices	2

M	
main unit	
overview	5
specifications	12
mains fuse (UK only)	2
MP3	
play	10

N	
night mode	10

O	
overview	
connectors	7
main unit	5
remote control	5

P	
play	
MP3	10
position	
connectors	7
position	6

R	
recycling	4
remote control	
batteries	12
overview	5

S	
safety	
disposal	4
use of the product	3
setup menu	
sound	
predefined sound mode	9
surround sound mode	10
synchronize picture and sound	10
troubleshooting	13
speakers	6
subwoofer	
connect	7
synchronize picture and sound	10

T	
trademarks	3
troubleshooting	
sound	13

V	
video	
synchronize picture and sound	10

