

# PhotoFrame



SPF5008

SPF5208

SPF5010

SPF5210

SPF7008

SPF7208

SPF7010

SPF7210

## Quick start guide

**1** Get started

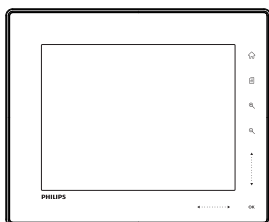
**2** Play

**3** Setup

**PHILIPS**

EN

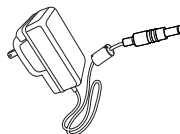
# What's in the box



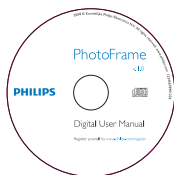
Philips Digital PhotoFrame



Stand

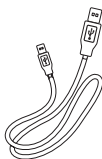


AC-DC power adaptor

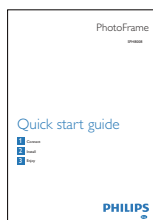


CD-ROM, including

- Digital User Manual
- (SPF7008/SPF7208/SPF7010/SPF7210) Philips PhotoFrame Manager (Software and User Manual)

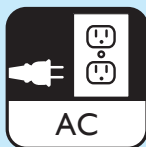


USB cable  
(not supplied to  
SPF5010/SPF5210)

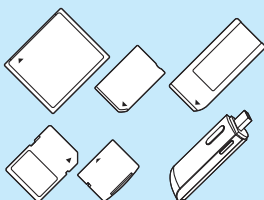


Quick Start Guide

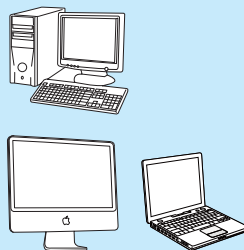
## What you also need



AC power socket












Memory card / USB




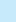
Computer

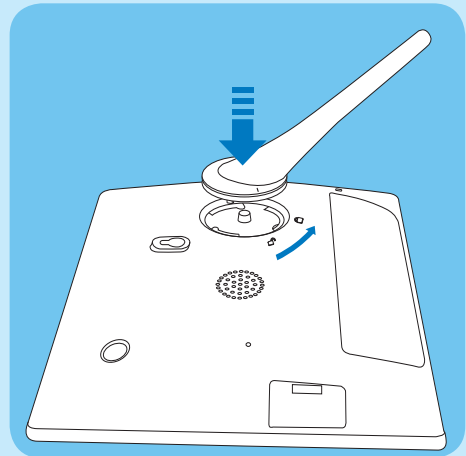
# 1 Get started

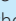
## Control buttons

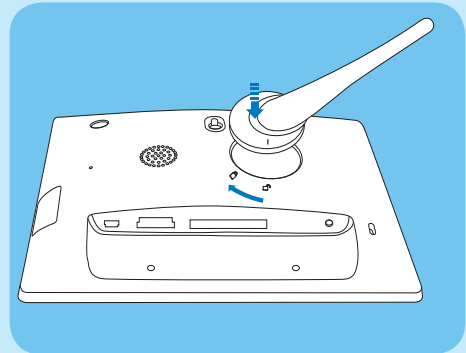
- ① 
  - Turn on/off the PhotoFrame
- ② 
  - Access the home screen
- ③ 
  - Access the quick menu
  - Access option menu
- ④ **Zoom in/out**
  -   
Zoom in an image  
Switch modes: Album mode → thumbnail mode → slideshow mode → zoom in 2 times → zoom in 4 times
  -   
Zoom out an image  
Switch modes: Album mode ← thumbnail mode ← slideshow mode ← zoom out 2 times ← zoom out 4 times
- ⑤ **Up/down slider**  
Scroll up/down at high speed
  -  Select the upper item  
Increase the volume
  -  Select the item below  
Decrease the volume
- ⑥ **OK**
  - Display slideshow
  - Play/Pause slideshow/video
  - Confirm a selection
- ⑦ **Left/right slider** ◀ ..... ▶  
Scroll left/right at high speed
  -  Select the left item
  -  Select the right item

## Install the stand

- 1 Insert the stand into the PhotoFrame.
- 2 Position the indication on the stand to the  position.
- 3 (SPF5008/SPF5208) Turn the stand anti-clockwise 45 degrees to the  position and lock it to the PhotoFrame firmly.



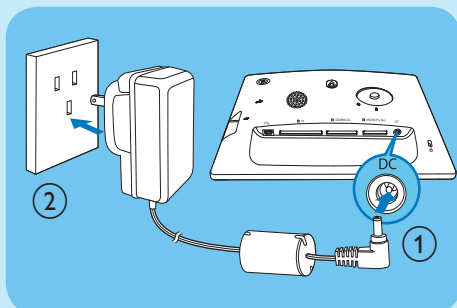
- (SPF5010/SPF5210/SPF7008/SPF7208/SPF7010/SPF7210) Turn the stand clockwise 45 degrees to the  position and lock it to the PhotoFrame firmly.



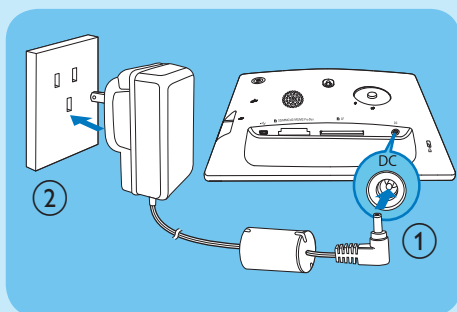
## Connect power

- 1 Connect the supplied power cord to the DC socket of the PhotoFrame.

- SPF5008/SPF5208



- SPF5010/SFP5210/SPF7008/SPF7208/  
SPF7010/SPF7210



- 2 Connect the power cord to a power supply socket.

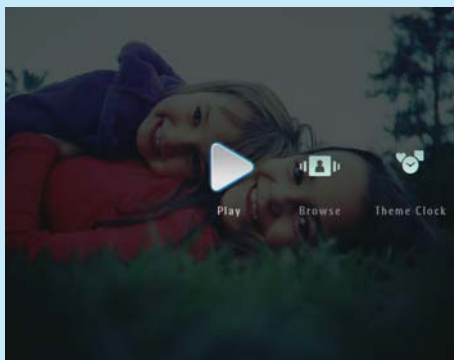
## Turn on/off the PhotoFrame

### Note

- You can only turn off the PhotoFrame after all copy and save actions are complete.

### For the first time use:

- 1 Press and hold  $\phi$  for more than 1 second.  
↳ The language selection menu is displayed.
- 2 Select a language, and then tap **OK** to confirm.  
↳ The home screen is displayed.



For other times when the on screen language is selected:

- 1 Press and hold  $\phi$  for more than 1 second.  
↳ The home screen is displayed.
- To turn off the PhotoFrame, press and hold  $\phi$  for about 2 seconds.

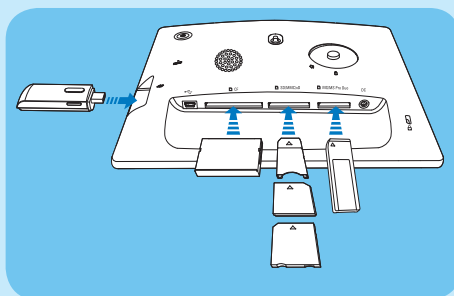
## Transfer photos/music or video files from an SD card

### Caution

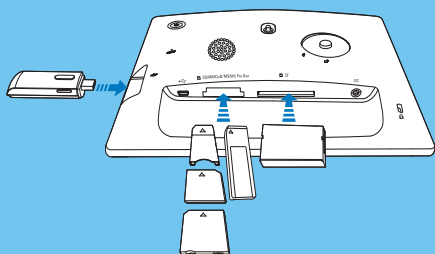
- Do not remove a storage device from the PhotoFrame when files are transferring from or to the storage device.

For details on other applicable storage device, refer to the User Manual of your PhotoFrame in the supplied CD-ROM.

- 1 Insert an SD card or other storage device into the PhotoFrame firmly.
  - SPF5008/SPF5208



- SPF5010/SPF5210/SPF7008/SPF7208/  
SPF7010/SPF7210



- An option menu is displayed.



**2** Select **[Transfer]**, and then tap **OK** to confirm.  
↳ A confirmation message is displayed.

**3** To select all photos or video/music files, select **[Yes]** and then tap **OK** to confirm.

- To select some of photos or video/music files, select **[No]** and then tap **OK** to confirm. Tap **▲** / **▼** / **◀** / **▶** and **OK** to select photos or video/music files, and then tap **☑** to continue the transfer operation.

**4** Select a destination album on the PhotoFrame, and then tap **OK** to confirm.

↳ Photos/video files are transferred to the PhotoFrame.

- To remove a storage device, pull it out from the PhotoFrame.

## Transfer by Philips PhotoFrame Manager (SPF7008/SPF7208/SPF7010/SPF7210)

Recommended way for SPF7008/SPF7208/  
SPF7010/SPF7210.

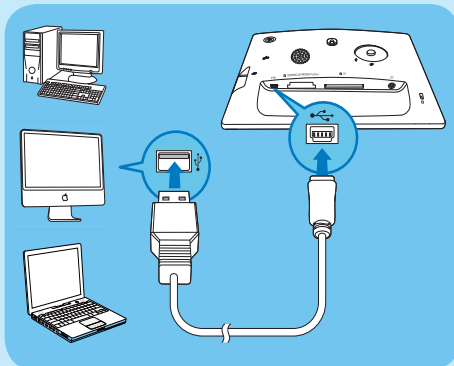
### ! Caution

- Do not disconnect the PhotoFrame from the PC when files are transferring between the PhotoFrame and the PC.

### ☰ Note

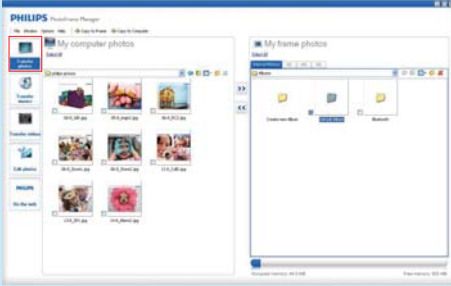
- Ensure that Philips PhotoFrame Manager is installed on your PC.

**1** Connect the supplied USB cable to the PhotoFrame and to a PC.



↳ Philips PhotoFrame Manager starts automatically.

- 2 Select [Transfer Photos] / [Transfer Music] / [Transfer Video].



- 3 Under [My frame photos] / [My frame music] / [My frame videos], select a destination album/folder.
- 4 Under [My computer photos] / [My computer music] / [My computer videos], select photos or video/music files.
- 5 Click the >>> icon to start transfer.
- 6 After all transfer actions are complete, disconnect the USB cable from the PC and the PhotoFrame.

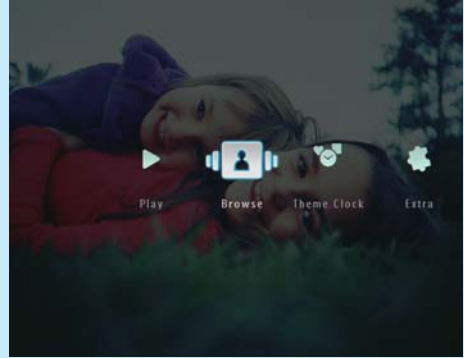
#### Tip

- If Philips PhotoFrame Manager does not start automatically, you can double click its icon on the desktop of your PC to start it.
- You can also drag and drop photos from the PhotoFrame to a PC.

## 2 Play

### Browse photos/video files in album mode

- 1 In the home screen, select [Browse] and then tap OK to confirm.



- ↳ Photos/video files are displayed in album mode.




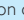
- 2 Select an album, and then tap ► to access the album.
- 3 Tap ▲/▼/◀/▶ to browse photos/video files in the album.

#### Tip

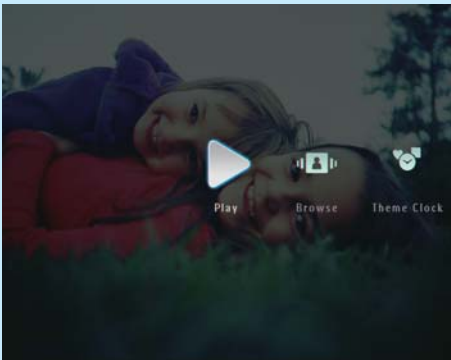
- If you select an album and then tap OK, photos/video files in the selected album are displayed in slideshow.

## Play photos/video files

### Note

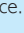




- With the PhotoFrame, you can play JPEG/progressive JPEG photos and most video clips of a digital still camera in M-JPEG (\*.avi/\*.mov), MPEG-1 (\*.mpg), MPEG-4 (\*.avi/\*.mov/\*.mp4), H.263 (\*.avi/\*.mov) format. Some video clips might have compatibility issues when played on your PhotoFrame. Before playing, ensure that these video clips are compatible with your PhotoFrame.
- Some video clips in a format which is not compatible well with your PhotoFrame, like \*.3gp/\*.3g2 and some others, may be played with no audio output. When a video clip is played with no audio output, the icon  is displayed on the screen.
- In album/thumbnail/filmstrip mode, a video file is displayed with the  icon on the left top corner.

- 1 In the home screen, select **[Play]** and then tap **OK** to confirm.



- ↳ Photos/video files are displayed in slideshow mode.



### During play:

- To view the album in which the slideshow image/video is saved, tap  twice.
- To adjust volume, tap  / .
- To pause/resume play, tap **OK**.
- To play the previous/next file, tap  / .

## Play background music

### Note

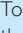
- Only MP3 (MPEG Audio Layer III) music files can be played on the PhotoFrame.

- 1 During photo display, tap .  
↳ An option menu is displayed.
- 2 Tap  repeatedly to select **[Play Background Music]**, and then tap **OK** to confirm.



- 3 Select **[Set Music]**, and then tap **OK** to confirm.



- 4 Select a folder.
- 5 To play all music files in the folder, tap **OK** to confirm.
  - To play a single music file, tap  to access the folder, select a music file, and then tap **OK** to confirm.

If you have set music before:

- In [Play Background Music] menu, select [Turn On] and then tap **OK** to confirm.




- Selected music files are played.

To stop music play:

- In [Play Background Music] menu, select [Turn Off] and then tap **OK** to confirm.

#### Tip

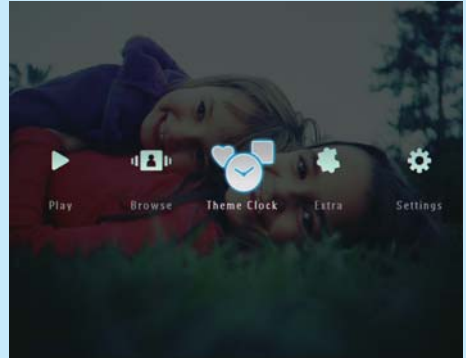
- After a music file is selected, you can tap  to access the option menu to copy/delete it.

## Display a theme clock (SPF5008/SPF5208/SPF7008/SPF7208/SPF7010/SPF7210)

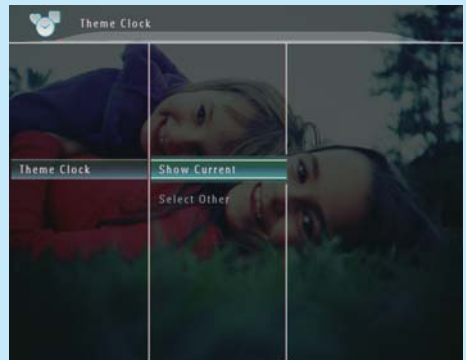
#### Note

- Ensure that you have installed a theme clock in your PhotoFrame.
- You can also download latest theme clocks from [www.philips.com/support](http://www.philips.com/support), in the coming future.

- 1 In the home screen, select [Theme Clock] and then tap **OK** to confirm.



- 2 Select [Show Current], and then tap **OK** to confirm.



To select and install another theme clock:

- 1 Download a theme clock and save it in an SD card before you install it.
- 2 Insert the SD card into the PhotoFrame.
- 3 In [Theme Clock] menu, select [Select Other] and then tap **OK** to confirm.
- 4 Select a theme clock, and then tap **OK** to confirm.
  - ↳ After the theme clock is installed, it is displayed automatically.



## 3 Setup

### Bluetooth (SPF7008/SPF7208/ SPF7010/SPF7210)

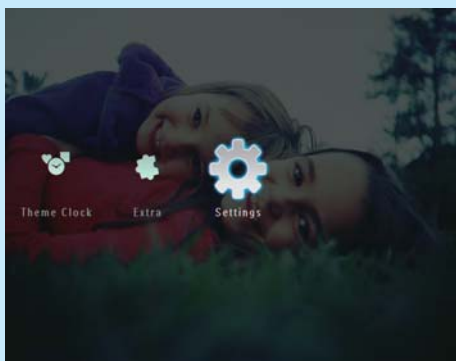
#### Note

- Bluetooth connectivity is available only on SPF7008/SPF7208/SPF7010/SPF7210.

### Set up Bluetooth connection

With the PhotoFrame, you can set up **Bluetooth** connection with a device like a mobile phone. Once a device is recognized, it is automatically accepted when it tries to connect with the PhotoFrame.

- 1 In the home screen, select **[Settings]** and then tap **OK** to confirm.



- 2 Select **[Bluetooth]**, and then tap **OK** to confirm.

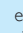


- 3 Select **[Setup]**, and then tap **OK** to confirm.
- 4 Select **[Bluetooth On]**, and then tap **OK** to confirm.



- To set off **Bluetooth** connection, select **[Bluetooth Off]** and then tap **OK** to confirm.

#### Tip

- If **Bluetooth** connection on your PhotoFrame is enabled, the **Bluetooth** icon  is displayed on the top-right corner of the screen.
- Photos obtained via **Bluetooth** connection are saved in the **Bluetooth** album. You can access or manage the **Bluetooth** album the same way you access or manage other albums on the PhotoFrame.

## Set Bluetooth pin code

To keep security, you can set a pin code (from 1 to 16 digits) on the PhotoFrame. The default pin code is 0000.

- 1 In the home screen, select **[Settings]** and then tap **OK** to confirm.
- 2 Select **[Bluetooth]**, and then tap **OK** to confirm.



- 3 Select **[Security]**, and then tap **OK** to confirm.
- 4 Select **[Pin Code]**, and then tap **OK** to confirm.  
↳ A key pad is displayed.
- 5 Select a number, and then tap **OK** to confirm.
- 6 Repeat Step 5 until the pin code is complete.
- 7 Select **[Enter]**, and then tap **OK** to confirm.



- 8 To set the pin code on, select **[Pin Code On]** and then tap **OK** to confirm.
  - To set the pin code off, select **[Pin Code Off]** and then tap **OK** to confirm.

## Send photos via Bluetooth connection by your mobile phone

### Note

- Ensure that **Bluetooth** connection on your mobile phone is enabled.
- Ensure that **Bluetooth** connection on your PhotoFrame is enabled.
- Detailed operation procedure may vary based on different mobile phones.

On your mobile phone:

- 1 Select photos to be sent to the PhotoFrame.
- 2 Select **[Send]** > **[Bluetooth]**, and then confirm the selection.  
↳ Your Philips PhotoFrame is searched.
- 3 If a pin code is required, enter the pin code (0000 by default ) of the PhotoFrame.
- 4 Select **[Send]**, and then confirm the selection.  
↳ Selected photos are sent to and saved in the **Bluetooth** album on the PhotoFrame.

# Frequently asked questions

## Is the LCD screen touch-enabled?

The LCD screen is not touch-enabled. After you turn on the PhotoFrame, you can use the touch boarder on the front panel to control the PhotoFrame.

## Can I use the PhotoFrame to delete photos on a memory card?

Yes, it supports operations to delete photos on external devices such as a memory card. Ensure that you enable the delete function on a memory card available on the PhotoFrame.

## Why does my PhotoFrame not show some of my photos?

- The PhotoFrame plays only JPEG photos (maximum: 8000 × 6000 pixel resolution) and progressive JPEG photos (maximum: 1024 × 768 pixel resolution).
- Ensure that these photos are not damaged.


## Why does my PhotoFrame not show some of my video files?

- The PhotoFrame plays most video clips of a digital still camera in M-JPEG (\*.avi/\*.mov), MPEG-1 (\*.mpg), MPEG-4 (\*.avi/\*.mov/\*.mp4), H.263 (\*.avi/\*.mov) format. Some video clips might have compatibility issues when played on your PhotoFrame. Before playing, ensure that these video clips are compatible with your PhotoFrame.
- Ensure that the size of the video files are applicable to your PhotoFrame (For details, see "Product information" in the User Manual).
- Ensure that the video files are not damaged.

## Why cannot my PhotoFrame show video files even I could see them in [Browse] mode, and I played them before?

Ensure that [Slideshow Photo Only] is not enabled.

### To play video in slideshow mode:

1. In slideshow mode, tap .
2. In the displayed option menu, select [Slideshow Photo Only].
3. In the displayed message, select [No] and then tap **OK** to confirm.

Now you can play these video files in slideshow.

## Why does my PhotoFrame not show some of my music files?

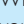
The PhotoFrame only supports MP3 (MPEG Audio Layer III) music files. Ensure that these MP3 (MPEG Audio Layer III) music files are not damaged.

## Why does the PhotoFrame not go into auto-off status after I set it?

- Ensure that you set the current time, auto-off time, and auto-on time correctly. The PhotoFrame automatically turns off its display exactly at the auto-off time. If the time has already passed for the day, it starts to enter auto-off status at the specified time from the next day.
- Ensure that you adjust brightness sensor correctly. If the auto-on level is too close to the auto-off level, this function cannot take effect.

## Can I use the PhotoFrame during its display auto-off periods?

Yes.

When the PhotoFrame is in standby (sleep) mode, you can press  to wake up the PhotoFrame.

## The PhotoFrame is ON but the PhotoFrame does not respond anymore. What can I do?

Ensure that the PhotoFrame is turned on. Then, use a pin to trigger the **RESET** button located on the back to restore the system.

## Welcome to Philips!

Register your product and get support at [www.philips.com/welcome](http://www.philips.com/welcome)



© Royal Philips Electronics N.V. 2009  
All rights reserved.

Specifications are subject to change without notice.  
Trademarks are the property of Koninklijke Philips  
Electronics N.V. or their respective owners.

