

### Set the earpiece volume

During a call:

Press / to select the earpiece volume from level one to level five

### Set the ring melody

1. Press to access the main menu
2. Press / to select **PERSONAL SET**
3. Press to select **HANDSET TONE**
4. Press and / to select **RING MELODY**
5. Press and / to scroll to your desired ring melody
6. Press to save the settings

### Store a number in the phonebook

1. Press to access the main menu
2. Press / to select **PHONEBOOK**
3. Press and / to scroll to **NEW ENTRY**
4. Press to enter the name (maximum 12 characters)
5. Press to enter the number (maximum 24 digits)
6. Press to choose a group (<No Group>, <Group A>, <Group B>, <Group C>)
7. Press to save the entry

### Access the phonebook

1. Press to access the phonebook
2. Press / to select your desired phonebook entry
3. Press to view the details of your selected phonebook entry

### Listen to new messages recorded on answering machine (applicable to CD445 only)

1. Press on the base station to turn on the answering machine
2. Press on the base station, playback of the oldest new message will begin.
3. Press to skip the current message and play the next message
4. Press to go back to previous message if it is pressed within one second of current message playback
5. Press to replay current message if it is pressed after one second of current message playback
6. Press to increase or to decrease speaker volume during message playback
7. Press to delete the current message

See CD445 user manual for details about the answering machine function.

### Troubleshooting

For more information, see the user manual that came with your CD440 or CD445.

#### Problem

No dialing tone

#### Solution

- Charge the batteries for at least 24 hours
- Move closer to the base station
- Use the line cable provided

Poor audio quality

- Move closer to the base station
- Move the base station at least one metre away from any electrical appliances

The is blinking

- Register the handset to the base station
- Move closer to the base station

The handset LCD displays nothing

- Try again by disconnecting and connecting the base station power supply and follow the procedure to register a handset
- Make sure the two supplied rechargeable batteries have been inserted into the battery compartment
- Make sure the supplied batteries are charged up

Caller Line Identification (CLI) service does not work

- Check your subscription with your network operator

## Need help?

#### User Manual

See the User Manual that came with your CD440 or CD445.

#### Online help

[www.philips.com/support](http://www.philips.com/support)

# Welcome

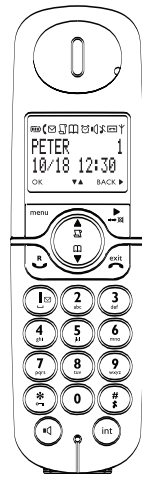
## Quick start guide



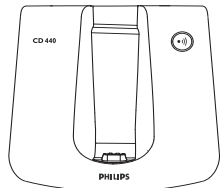
- 1 Connect
- 2 Install
- 3 Enjoy

# PHILIPS

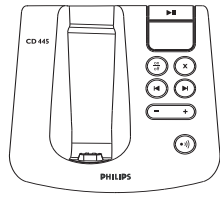
# What's in the box



CD440/CD445 Handset



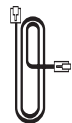
CD440 Base station  
OR



CD445 Base Station



Power supply unit for  
base station



Line cord



2 x AAA Rechargeable  
batteries



Quick start guide



CD440 or CD445  
User manual



Guarantee



Belt clip  
(Country dependent)

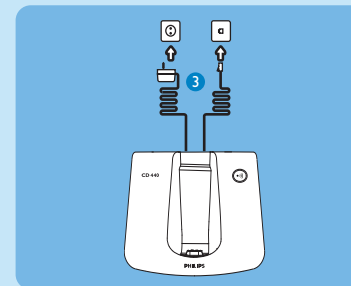
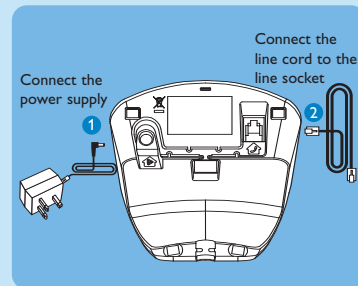
The line adaptor may not be attached to the line cord. You may find the line adaptor in the box. In this case, you have to connect the line adaptor to the line cord first before plugging the line cord to the line socket. In multi-handset packs, you will find one or more additional handsets, chargers with power supply units and additional rechargeable batteries.

**Warning** Always use the cables and batteries that are supplied with your phone.

## 1 Connect

Connect the base station

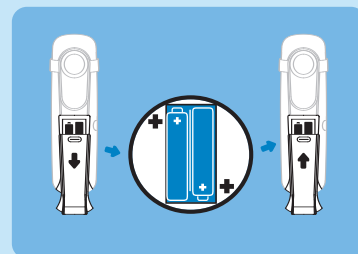
1. Insert the plug of the power cord into the socket under the base station.
2. Insert the plug of the line cord into the socket under the base station.
3. Connect the other end of the line cord together with the line adaptor if necessary, to the telephone line socket and the other end of the power cable to the electricity socket.



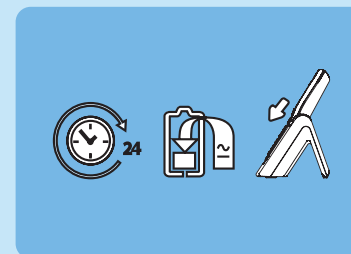
## 2 Install

Insert rechargeable batteries and charge

Insert batteries



Charge handset for 24 hours



Configure your phone (if necessary)

After charging your phone for a few minutes, the Welcome screen appears.

1. Press to display the list of countries
2. Press to scroll to your country
3. Press to confirm your selection

Set the time

1. Press to access the main menu
2. Press to select **CLOCK & ALARM**
3. Press to select **SET CLOCK**
4. Press and enter the current date (DD/MM/YY)
5. Press and enter the current time (HH:MM) in 24 hour format
6. Press to save the settings

## 3 Enjoy

Set the alarm

1. Press to access the main menu
2. Press to select **CLOCK & ALARM**
3. Press and to select **ALARM**
4. Press and to select **OFF, ON ONCE, or ON DAILY**
5. Press to save the settings

Rename your handset

1. Press to access the main menu
2. Press to select **PERSONAL SET**
3. Press and to select **HANDSET NAME**
4. Press to enter the handset name
5. Press to save the settings

Make a call

Press and dial the number

OR

Dial the number and press or

Answer a call

When the phone rings, press or .

End a call

Press