

Always there to help you

Register your product and get support at
www.philips.com/welcome



HTB5520
HTB5550
HTB5580

Quick start guide

PHILIPS



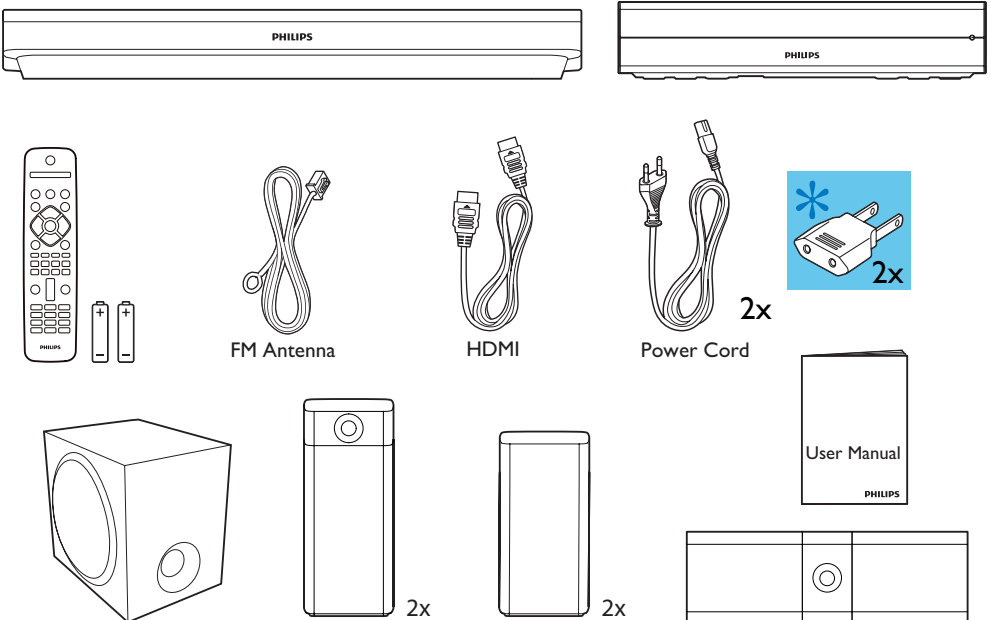
EN Before using your product, read all accompanying safety information

ES Antes de usar el producto, consulte la información de seguridad que se encuentra adjunta.



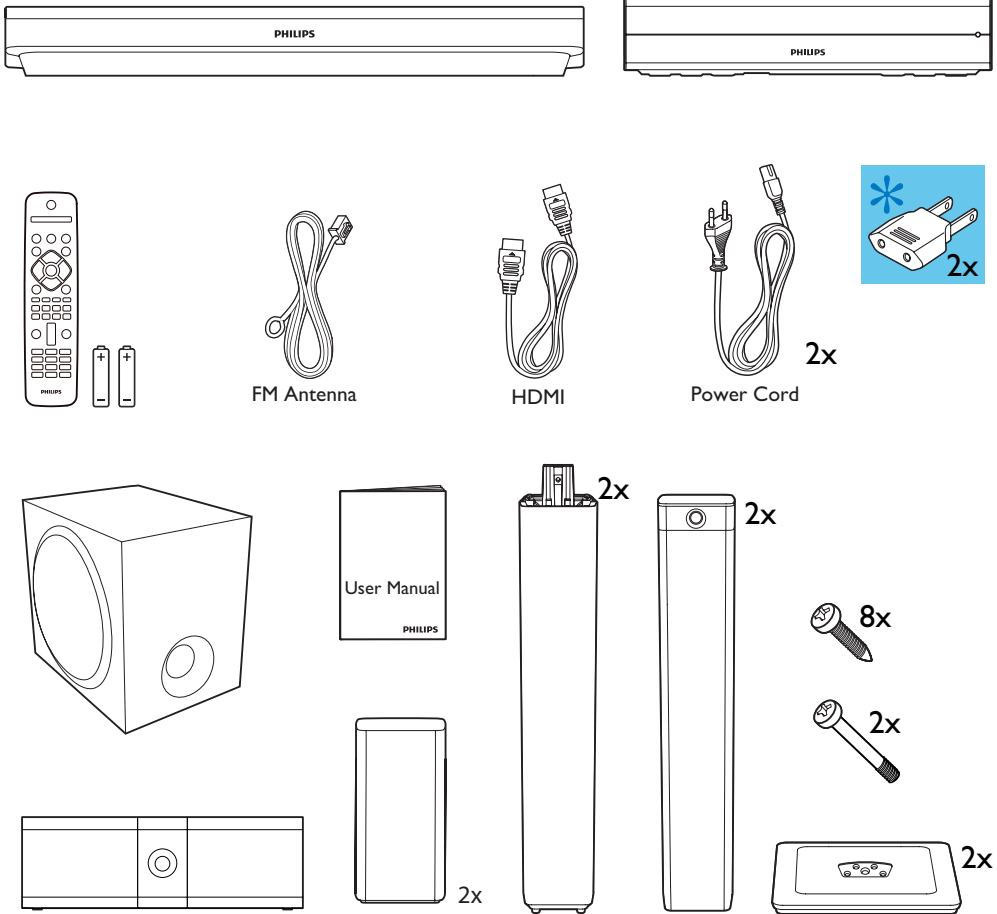
HTB5520

* **ES** Adaptador suministrado como accesorio. No debe ser utilizado en las redes eléctricas en Argentina, su uso está destinado sólo para los demás países de América Latina.



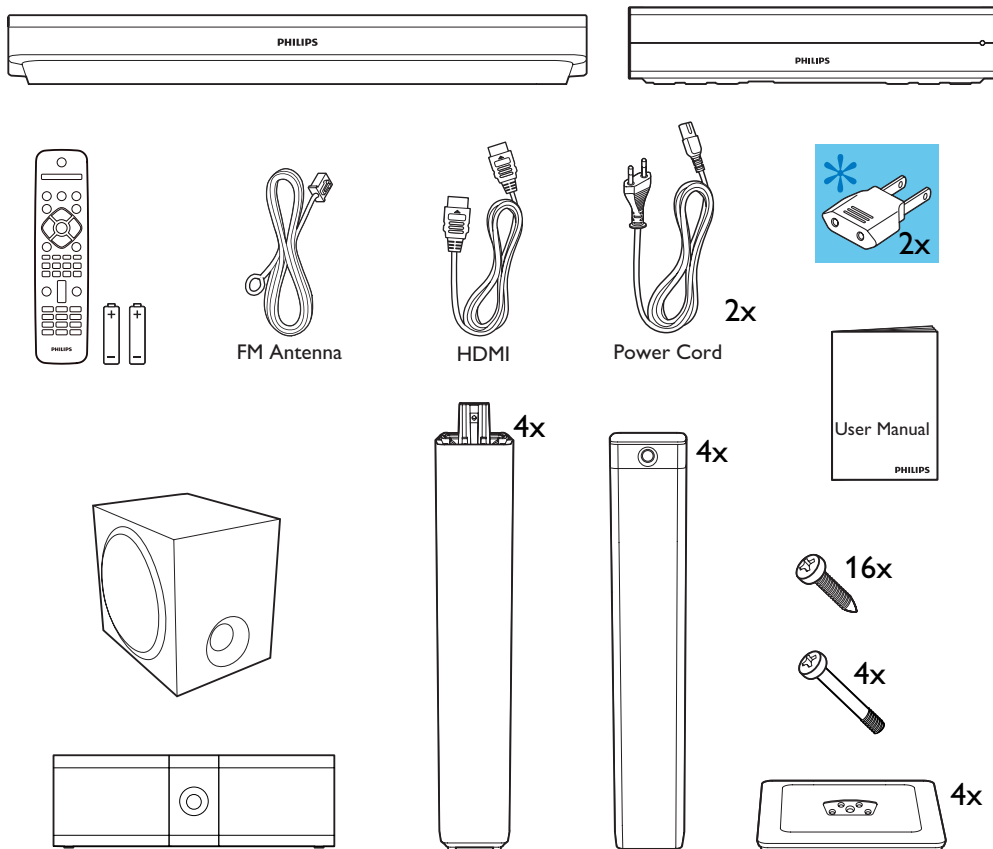
HTB5550

* ES Adaptador suministrado como accesorio. No debe ser utilizado en las redes eléctricas en Argentina, su uso está destinado sólo para los demás países de América Latina.



HTB5580

* ES Adaptador suministrado como accesorio. No debe ser utilizado en las redes eléctricas en Argentina, su uso está destinado sólo para los demás países de América Latina.

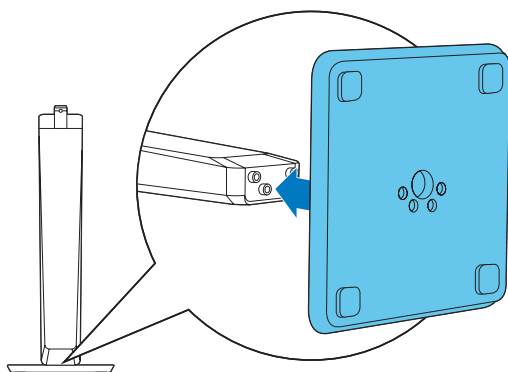


1

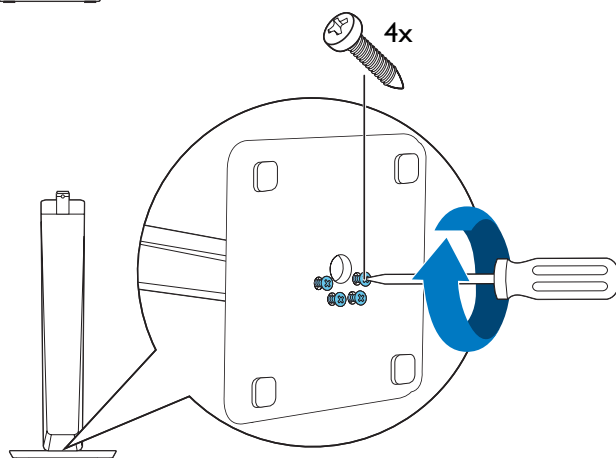
EN Stand mount the speakers
Applied to HTB5550 and HTB5580 only

ES Montaje de los altavoces con base o soporte
Solo aplica a los modelos HTB5550 y HTB5580

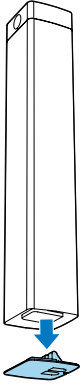
1



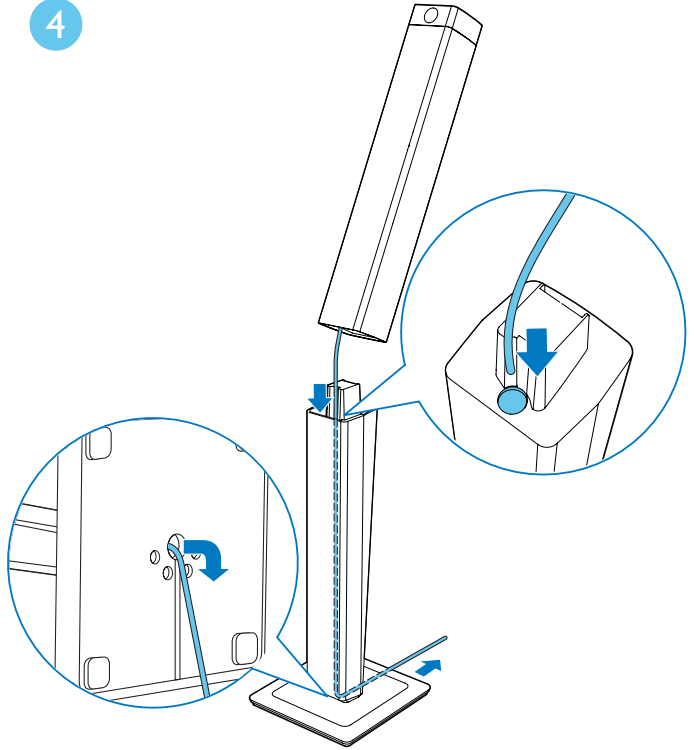
2



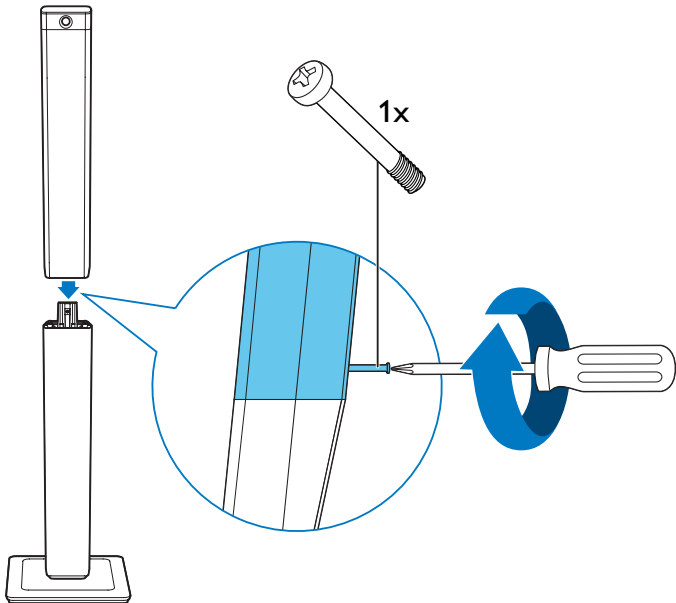
3



4



5

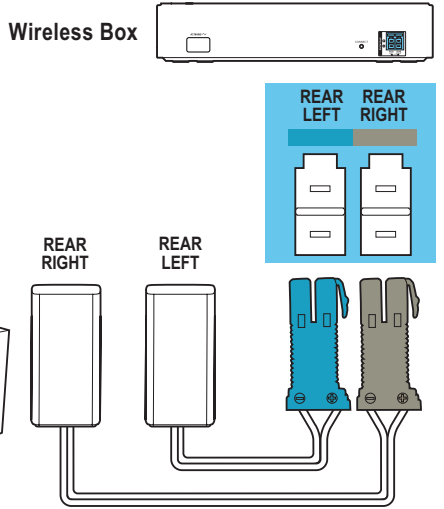
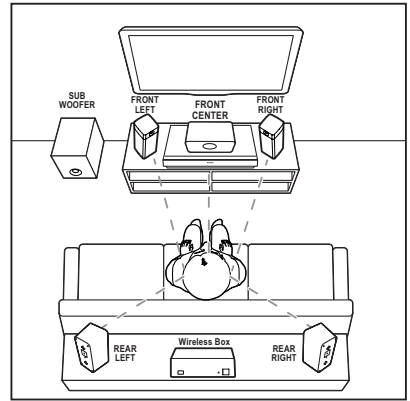
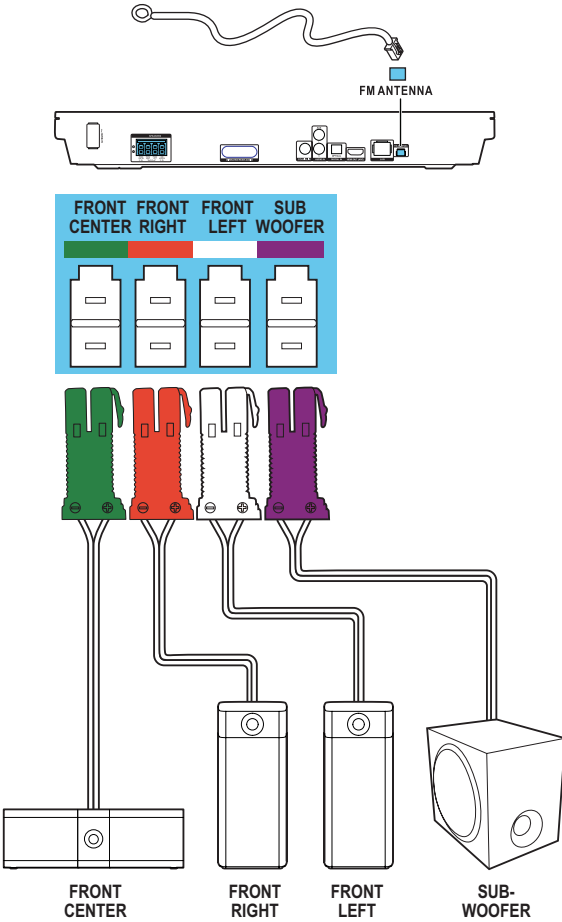


2

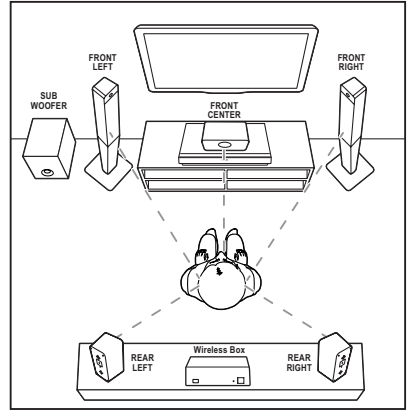
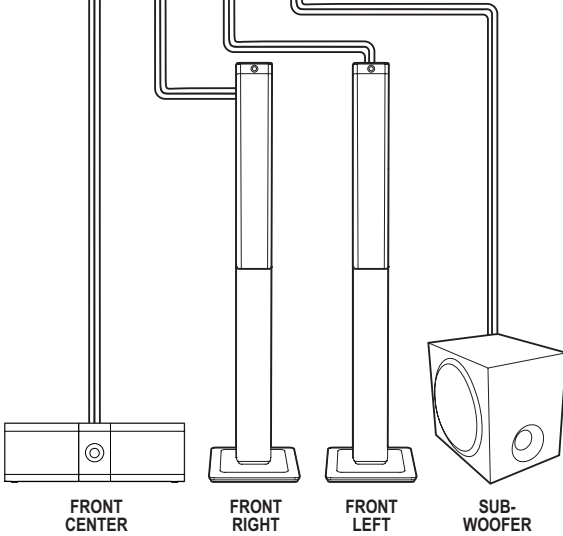
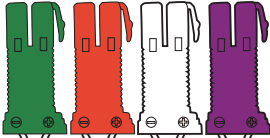
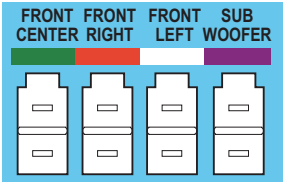
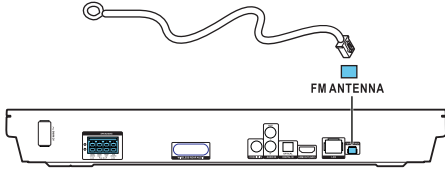
EN Connect the home theater

ES Conexión del Home Theater

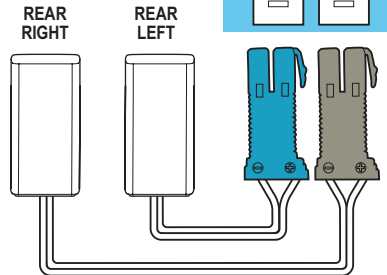
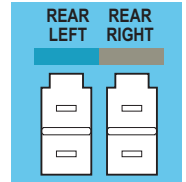
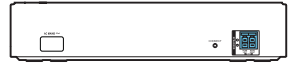
HTB5520



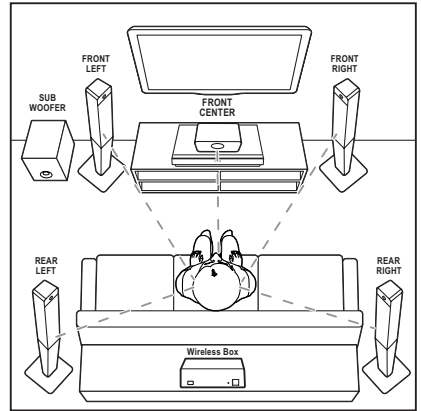
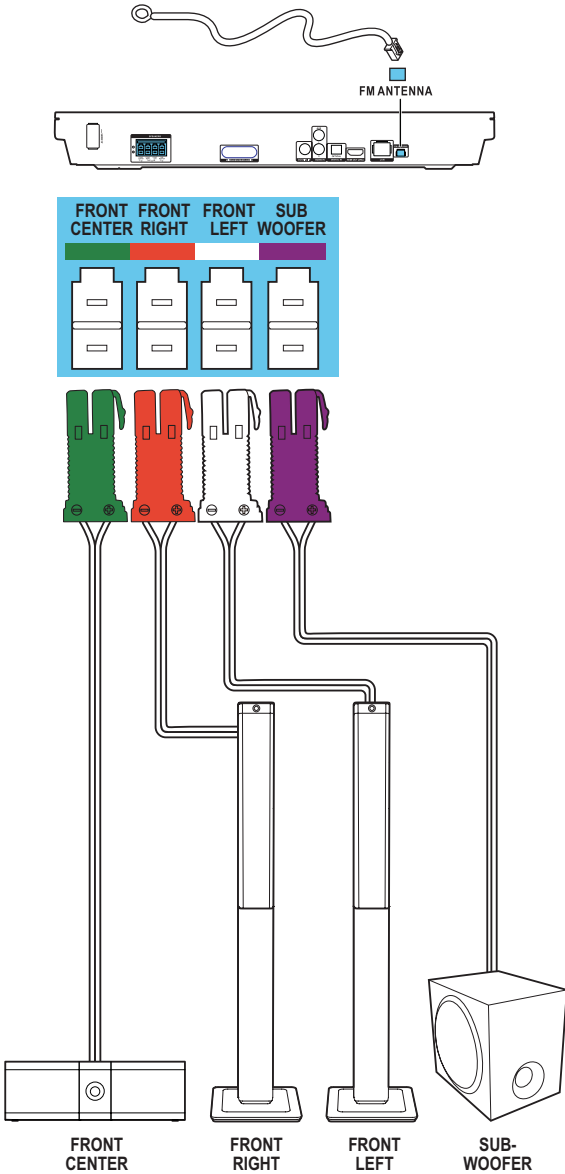
HTB5550



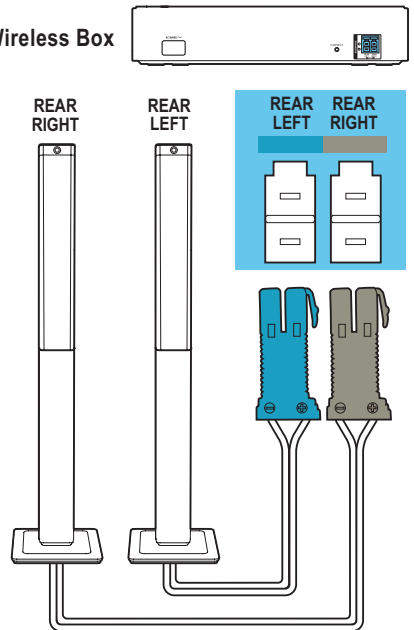
Wireless Box



HTB5580



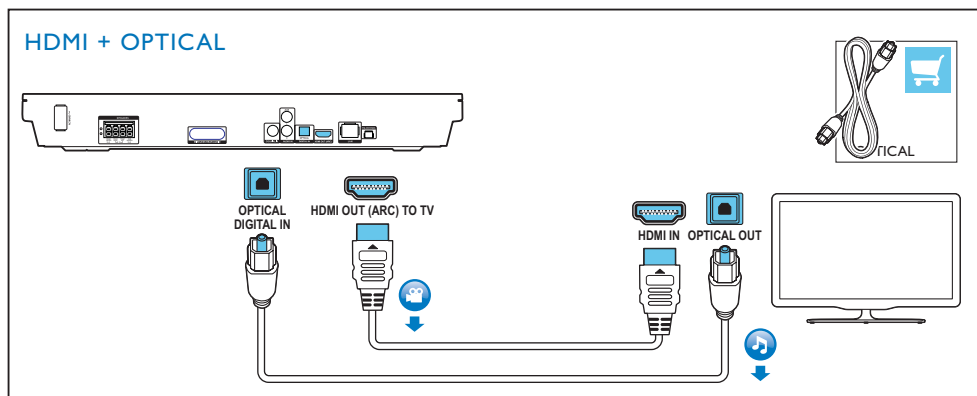
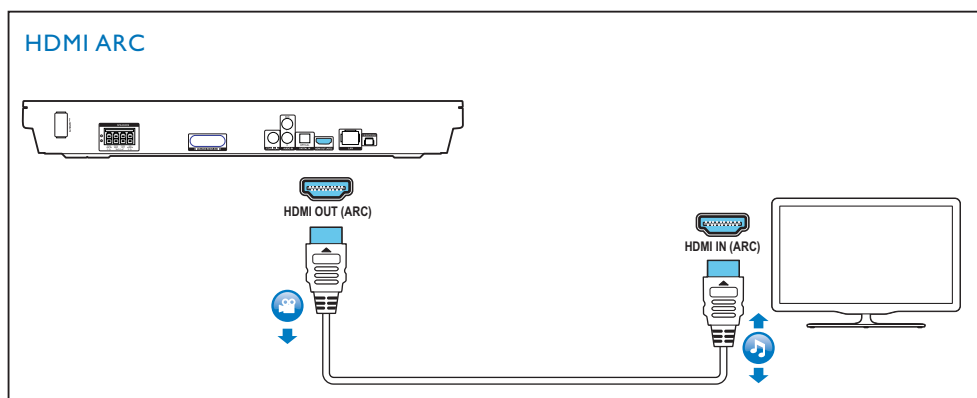
Wireless Box



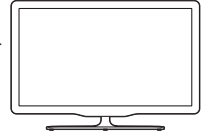
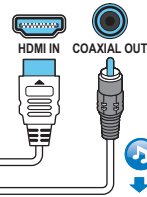
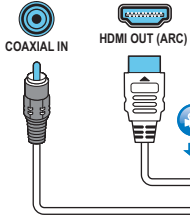
3

EN Connect to TV in one of these ways

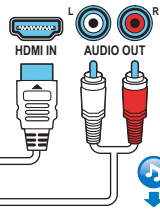
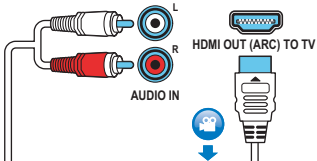
ES Conecte al TV de alguna de las siguientes maneras



HDMI + COAXIAL



HDMI + AUDIO L/R

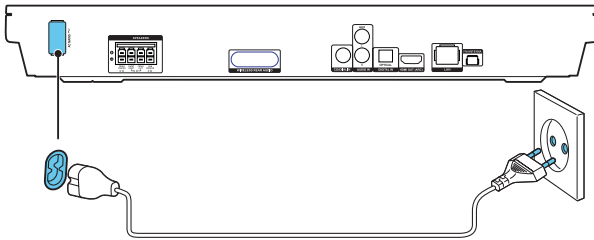


4a

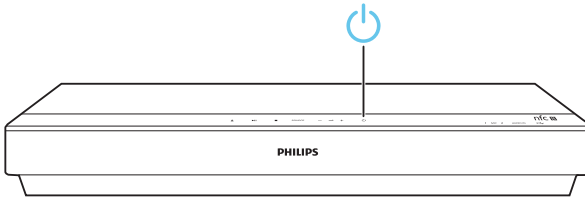
EN Switch on the home theater

ES Encendido del Home Theater

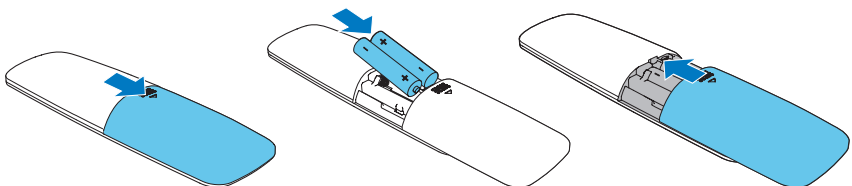
1



2



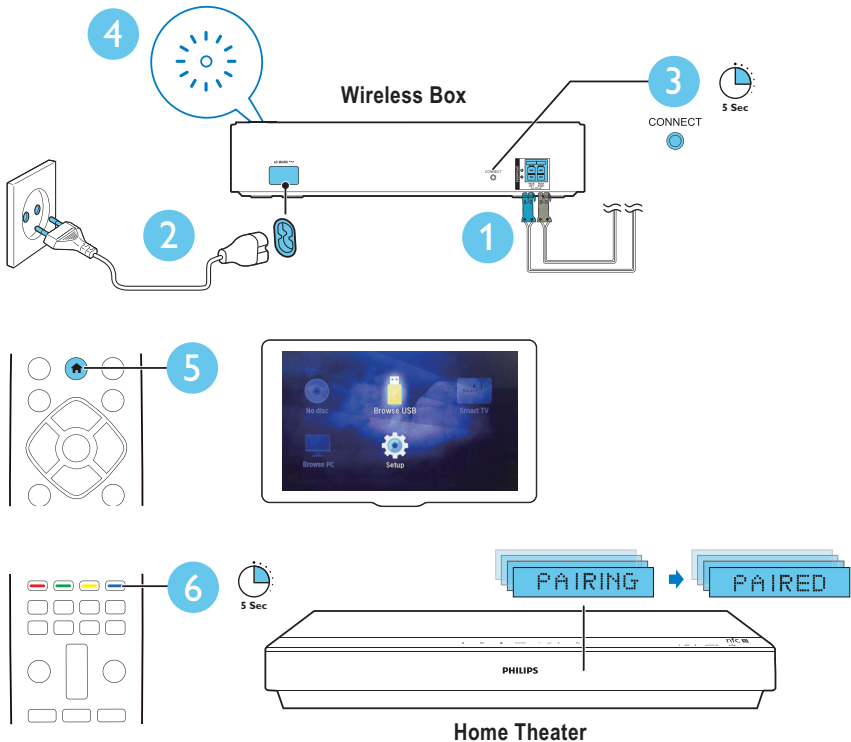
3



4b

EN Pair up the rear speakers (For the written instructions on pair-up of the rear speakers, refer to Chapter 3 “Connect and setup” of the User Manual.)

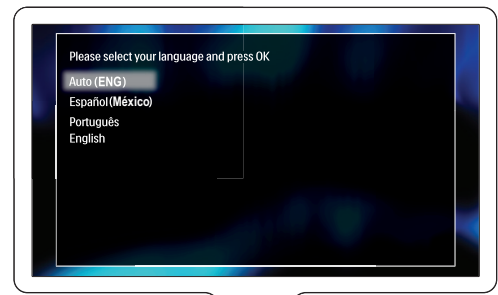
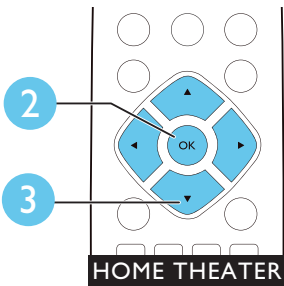
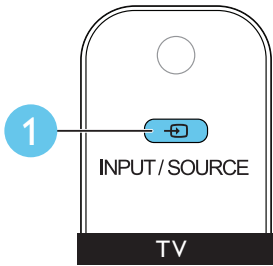
ES Empareje los altavoces posteriores (para acceder a las instrucciones escritas acerca del emparejamiento de los altavoces posteriores, consulte el capítulo 3 “Conexión y configuración” del manual de usuario)



5

EN Complete the first time setup

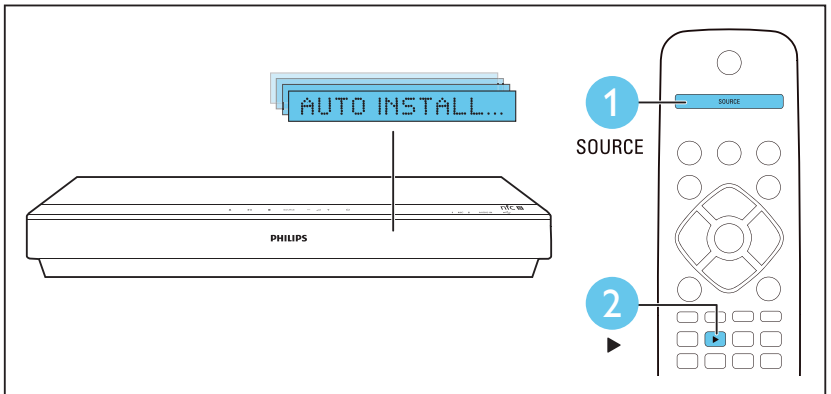
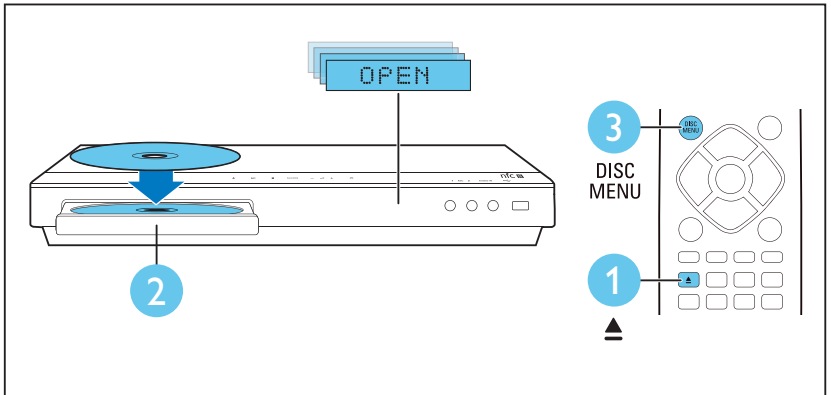
ES Proceso de configuración inicial

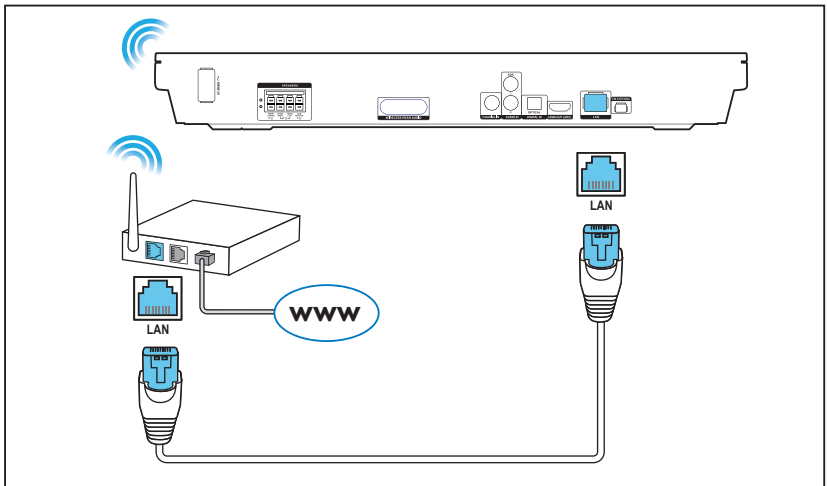
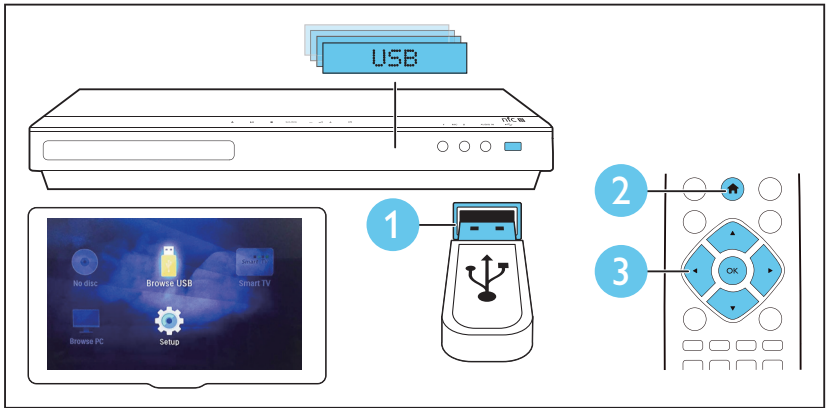
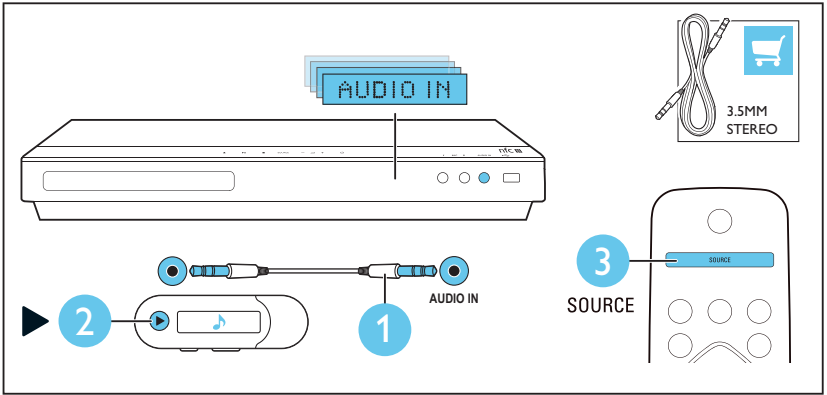


6

EN Use your home theater

ES Uso del sistema de Home Theater

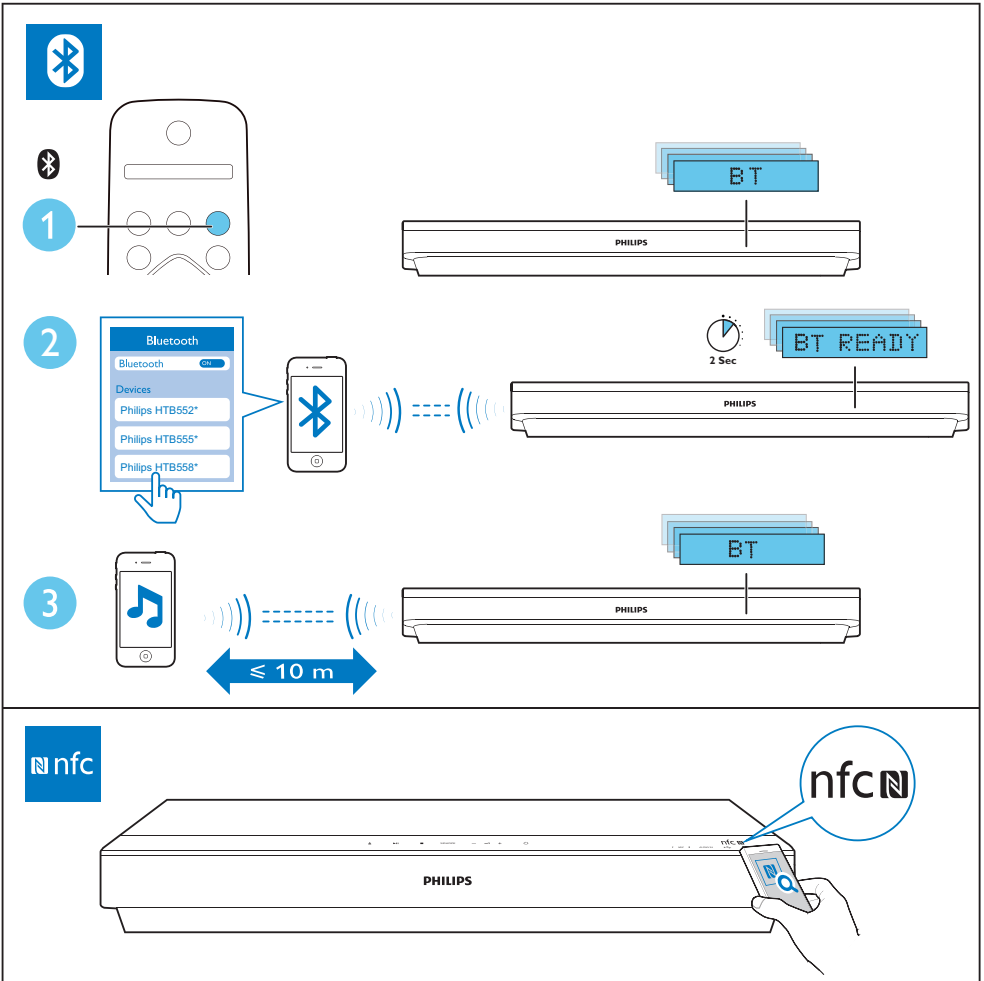




7

EN Play audio through Bluetooth or connect Bluetooth via NFC

ES Reproduzca audio a través de Bluetooth o conecte el Bluetooth mediante NFC





EN For more information about using this product, visit www.philips.com/support

ES Para obtener más información acerca de este producto, visite www.philips.com/support



www.philips.com/support



Specifications are subject to change without notice
© 2015 Koninklijke Philips N.V. All rights reserved.
Trademarks are the property of Koninklijke Philips N.V. or their respective owners.

HTB5520/HTB5550/HTB5580_55_QSG_V2.0

