

Always there to help you  
始终如一地为您提供帮助

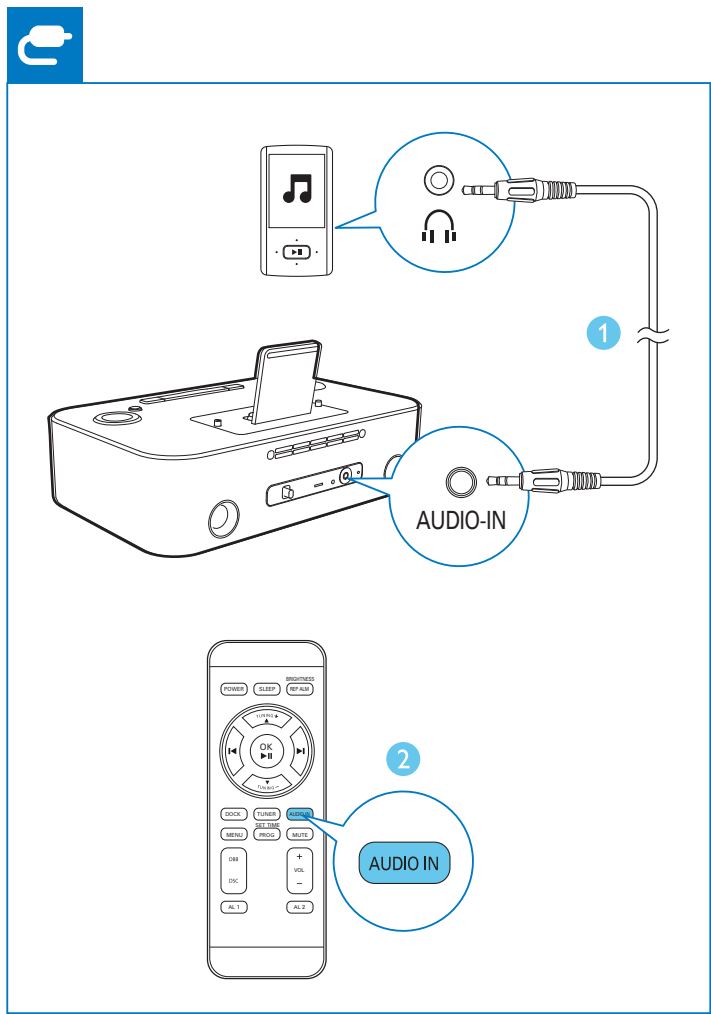
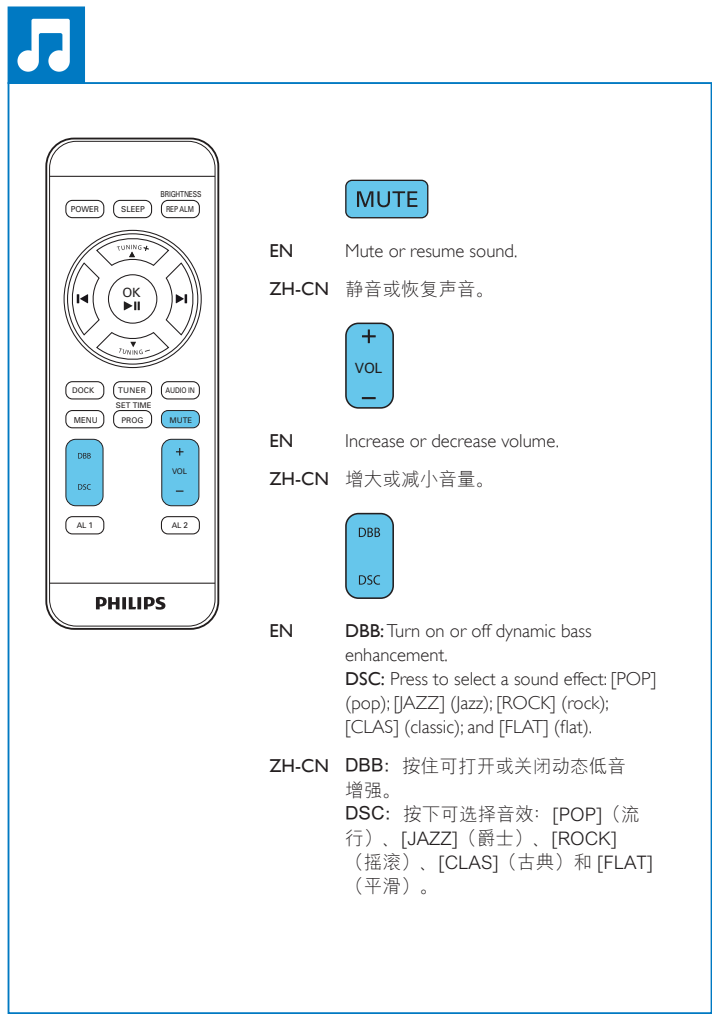
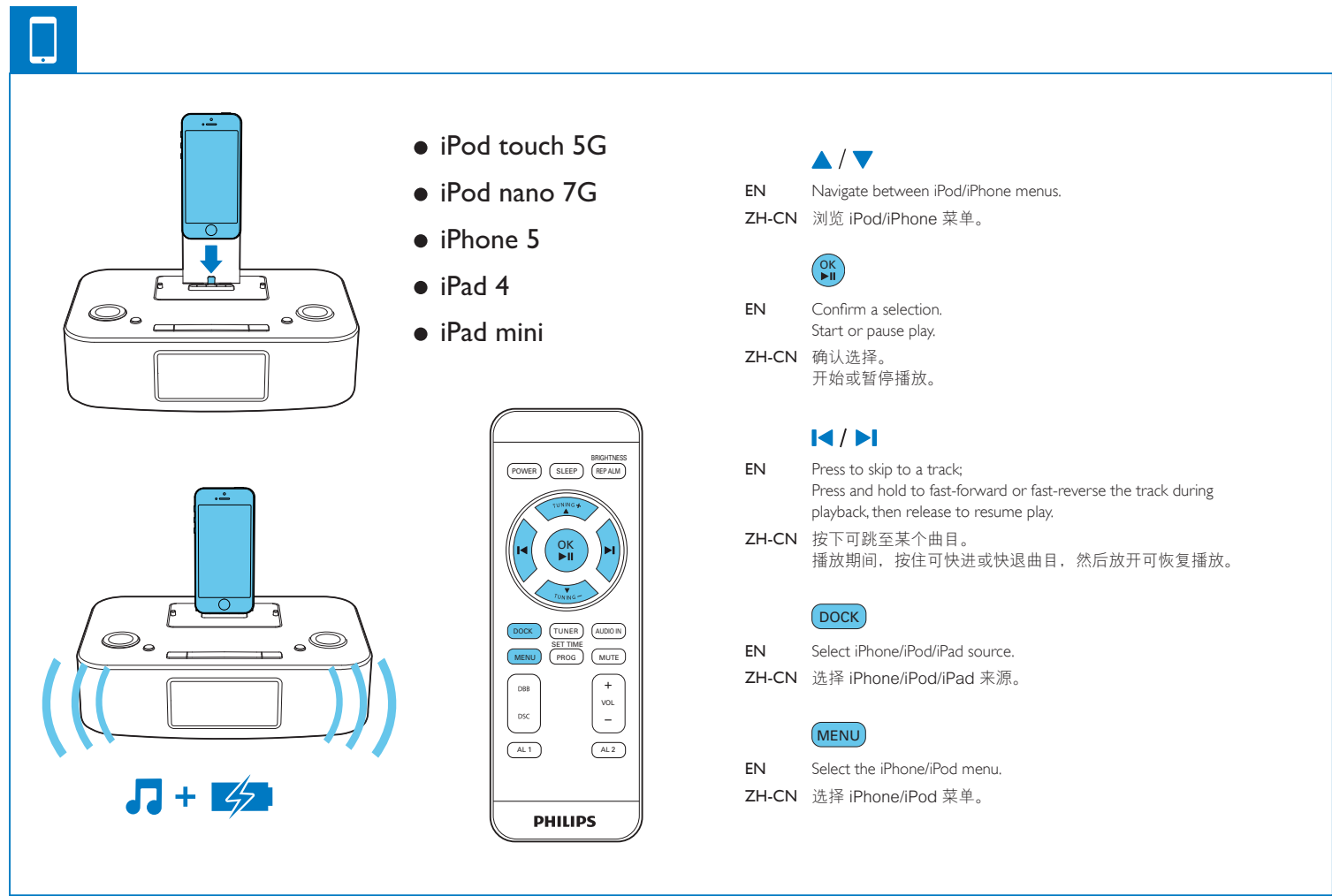
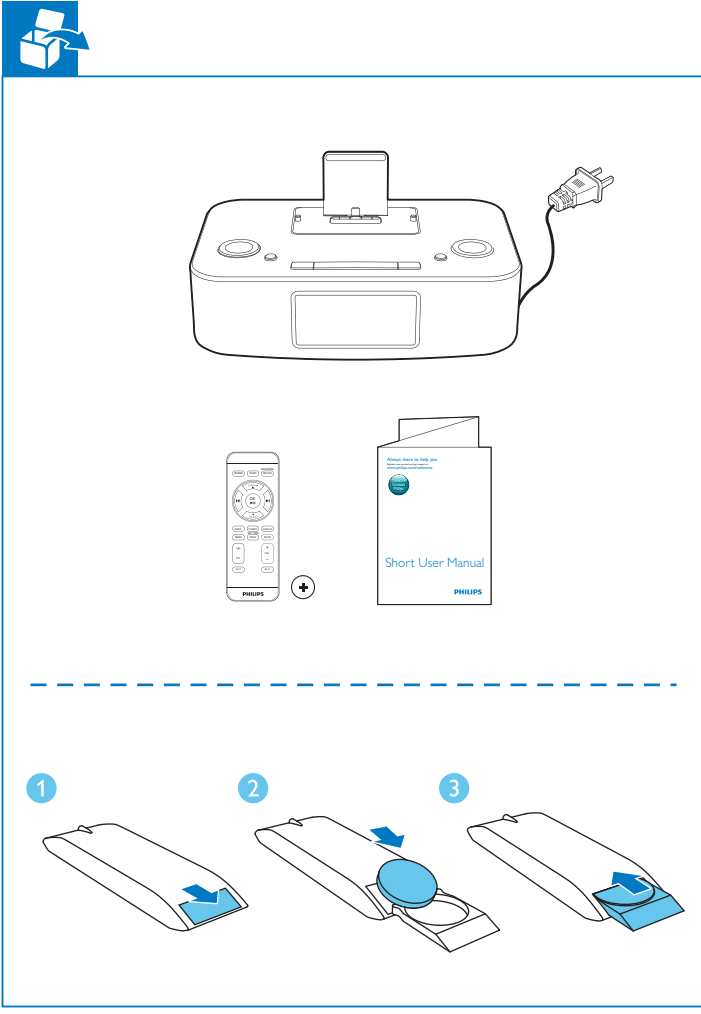
Register your product and get support at  
在以下网址注册您的产品并获得支持  
[www.philips.com/welcome](http://www.philips.com/welcome)



## Short User Manual 简明用户手册

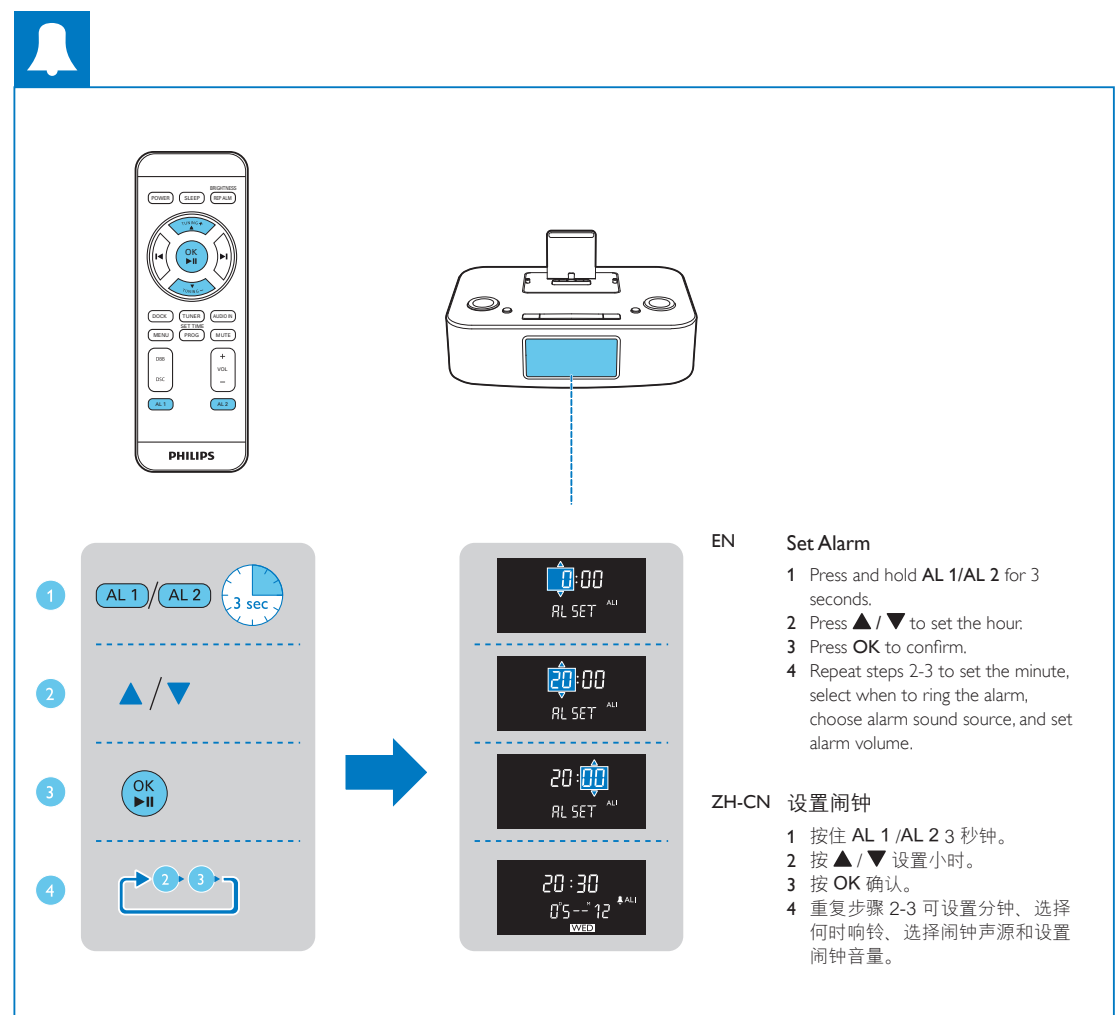
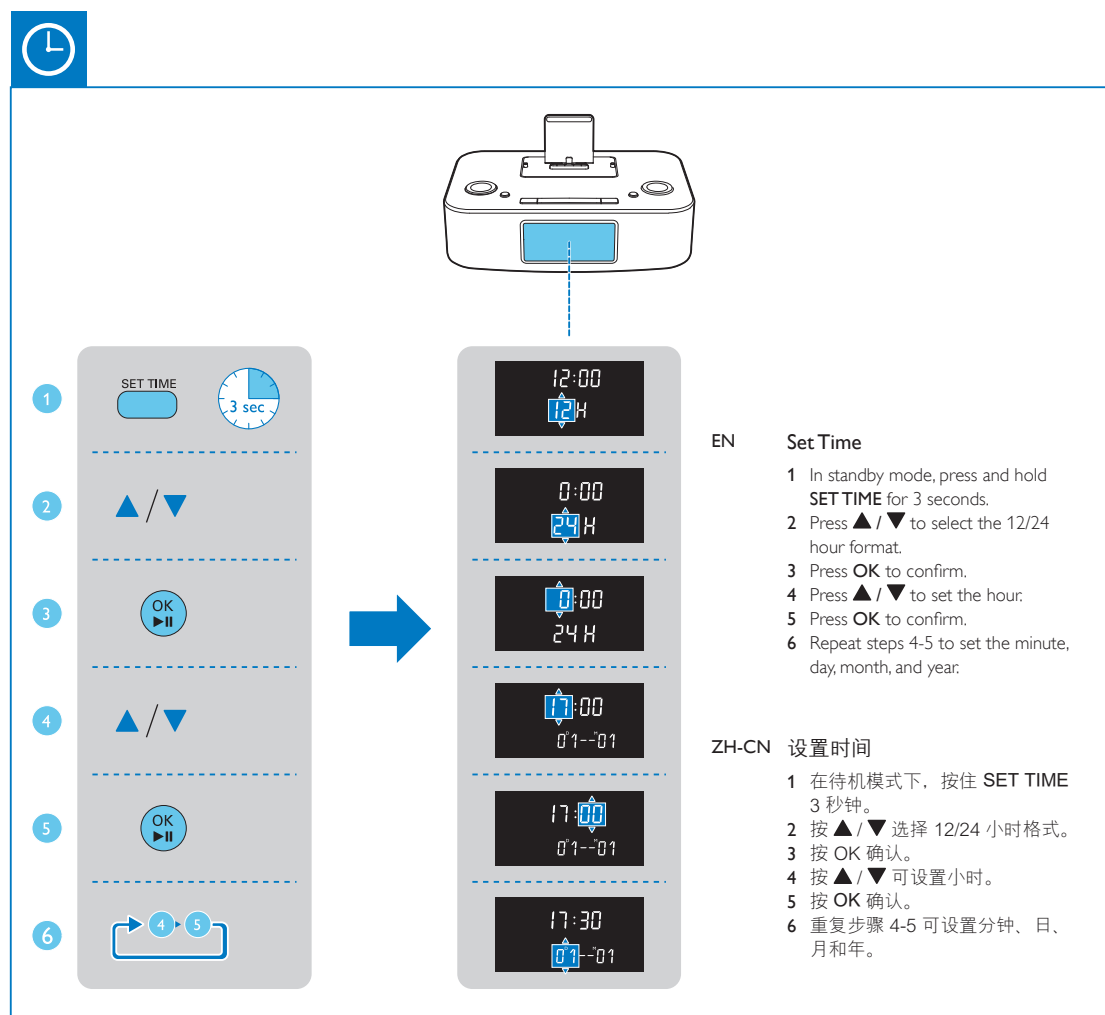
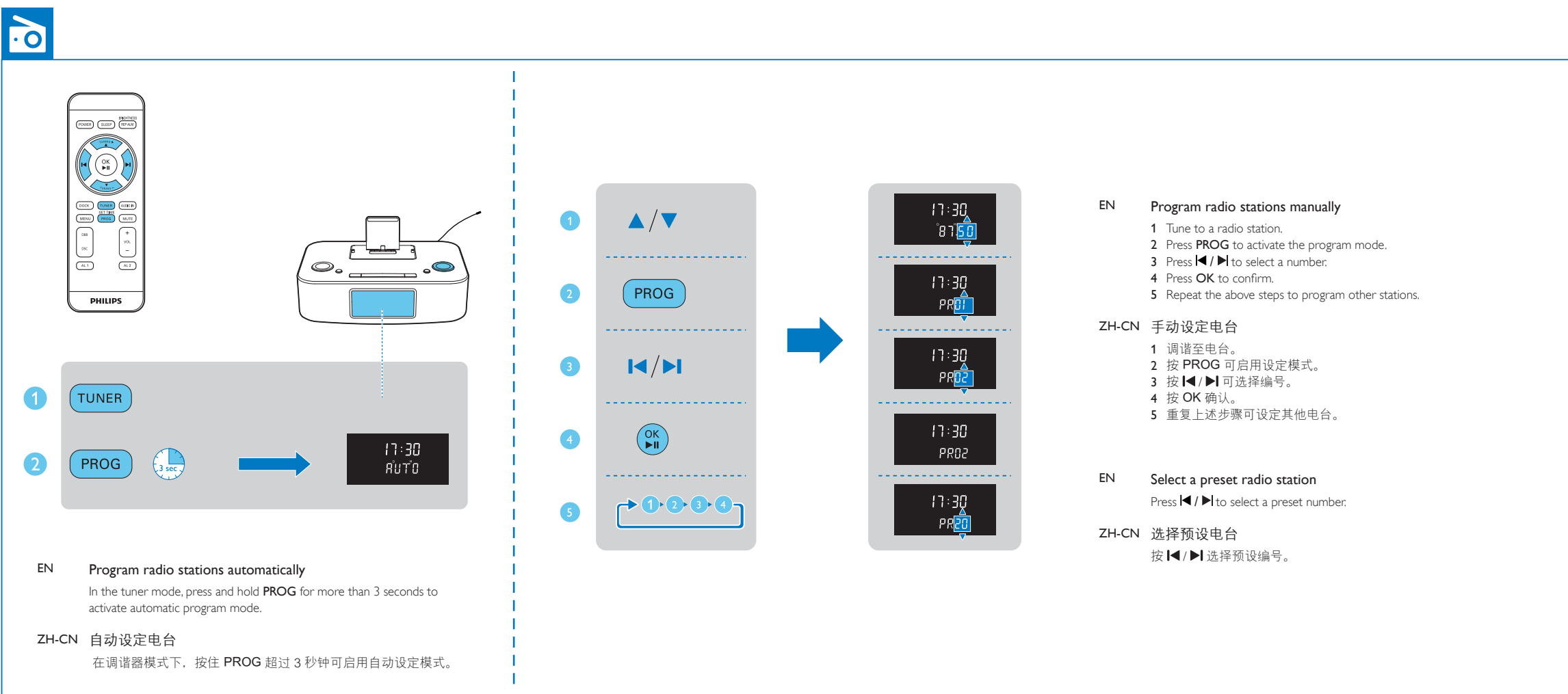
PHILIPS


DC295



All registered and unregistered trademarks are property of  
their respective owners.  
© 2013 Koninklijke Philips Electronics N.V.  
All rights reserved.


DC295\_93\_Short User Manual\_V1.0





120 → 90 → 60 → 45 → 30 → 15


OFF




**SLEEP**

**EN** When the system is turned on, press it to select the sleep timer period. When [OFF] is displayed, the sleep timer is deactivated.

**ZH-CN** 系统打开后，按下可选择定时关机时段。显示 [OFF]（关）时，表明定时关机已被禁用。






**EN** To download the full user manual, visit [www.philips.com/support](http://www.philips.com/support).

**ZH-CN** 要下载完整用户手册，请访问 [www.philips.com/support](http://www.philips.com/support)。

## 1 Important

### Safety



**Warning**

- Never remove the casing of this apparatus.
- Never lubricate any part of this apparatus.
- Never place this apparatus on other electrical equipment.
- Keep this apparatus away from direct sunlight, naked flames or heat.
- Ensure that you always have easy access to the power cord, plug or adaptor to disconnect the apparatus from the power.
- Use only power supplies listed in the user manual.

- Batteries (battery pack or batteries installed) shall not be exposed to excessive heat such as sunshine, fire or the like.
- Battery usage **CAUTION** – To prevent battery leakage which may result in bodily injury, property damage, or damage to the remote control:
  - Install all batteries correctly, + and - as marked on the remote control.
  - Do not mix batteries (old and new or carbon and alkaline, etc.).
  - Remove batteries when the remote control is not used for a long time.
- Make sure that there is enough free space around the product for ventilation.
- The system shall not be exposed to dripping or splashing.
- Do not place any sources of danger on the system (e.g. liquid filled objects, lighted candles).
- Where the plug of the Direct Plug-in Adapter is used as the disconnect device, the disconnect device shall remain readily operable.

### Note

- The type plate is located on the bottom of the product.

### Caution

- Remove battery if it is exhausted or will not be used for a long time.
- Batteries contain chemical substances, so they should be disposed of properly.
- Perchlorate Material-special handling may apply. See [www.dtscc.gov/hazardouswaste/perchlorate](http://www.dtscc.gov/hazardouswaste/perchlorate).

- The product/remote control may contain a coin/button type battery, which can be swallowed. Keep the battery out of reach of children at all times! If swallowed, the battery can cause serious injury or death. Severe internal burns can occur within two hours of ingestion.
- If you suspect that a battery has been swallowed or placed inside any part of the body, seek immediate medical attention.
- When you change the batteries, always keep all new and used batteries out of reach of children. Ensure that the battery compartment is completely secure after you replace the battery.
- If the battery compartment cannot be completely secured, discontinue use of the product. Keep out of reach of children and contact the manufacturer.

### Notice

Any changes or modifications made to this device that are not expressly approved by Philips Consumer Lifestyle may void the user's authority to operate the equipment.

Your product is designed and manufactured with high quality materials and components, which can be recycled and reused.



When this crossed-out wheeled bin symbol is attached to a product it means that the product is covered by the European Directive 2002/96/EC. Please inform yourself about the local separate collection system for electrical and electronic products. Please act according to your local rules and do not dispose of your old products with your normal household waste. Correct disposal of your old product helps to prevent potential negative consequences for the environment and human health.



Your product contains batteries covered by the European Directive 2006/66/EC, which cannot be disposed with normal household waste. Please inform yourself about the local rules on separate collection of batteries because correct disposal helps to prevent negative consequences for the environment and human health.



#### Environmental information

All unnecessary packaging has been omitted. We have tried to make the packaging easy to separate into three materials: cardboard (box), polystyrene foam (buffer) and polyethylene (bags, protective foam sheet).

Your system consists of materials which can be recycled and reused if disassembled by a specialized company. Please observe the local regulations regarding the disposal of packaging materials, exhausted batteries and old equipment.

Made for



"Made for iPod," "Made for iPhone," and "Made for iPad" mean that an electronic accessory has been designed to connect specifically to iPod, iPhone, or iPad, respectively, and has been certified by the developer to meet Apple performance standards. Apple is not responsible for the operation of this device or its compliance with safety and regulatory standards. Please note that the use of this accessory with iPod, iPhone, or iPad may affect wireless performance. iPod and iPhone are trademarks of Apple Inc., registered in the U.S. and other countries. iPad is a trademark of Apple Inc.

#### Environmental information

All unnecessary packaging has been omitted. We have tried to make the packaging easy to separate into three materials: cardboard (box), polystyrene foam (buffer) and polyethylene (bags, protective foam sheet).

Your system consists of materials which can be recycled and reused if disassembled by a specialized company. Please observe the local regulations regarding the disposal of packaging materials, exhausted batteries and old equipment.

#### Class II equipment symbol:



CLASS II apparatus with double insulation, and no protective earth provided.

## 2 Specifications

### Amplifier

Rated Output Power	2 x 5 W RMS
Frequency Response	80 Hz -16 kHz, ±3dB
Signal to Noise Ratio	≥67dBA
Aux Input (MP3 link)	0.6 V RMS 20kohm

### FM

Tuning Range	FM 87.5 - 108 MHz
Tuning grid	50 KHz
- Mono, 26dB S/N Ratio	<22 dBf
- Stereo, 46dB S/N Ratio	<43 dBf
Search Sensitivity	<28 dBf
Total Harmonic Distortion	<2%
Signal to Noise Ratio	>50 dB

### Speakers

Speaker Impedance	4 ohm
Speaker Driver	57mm
Sensitivity	>84dB/m/W

### General information

AC power	220V~, 50Hz
Operation Power Consumption	7.5 W
Standby Power Consumption (clock display)	<1 W
Dimensions	
- Main Unit (W x H x D)	263 x 135 x 163 mm
Weight (Main unit, without packing)	1.13 kg

## ZH-CN

## 1 注意事项

### 安全

#### 警告

- 切勿拆下本产品的外壳。
- 切勿润滑本装置的任何部件。
- 切勿将本装置放在其它电器设备上面。
- 应让本装置远离阳光直射、明火或高温。
- 确保始终可轻松地接触到电源线、电源插头或适配器，以便于将本装置从电源上断开。该断开设备应可以随时使用。
- 仅使用用户手册中列出的电源。

- 不可将电池（电池组或安装的电池）置于高温环境，如阳光直射处、明火或类似环境。
- 电池使用注意事项 - 为防止电池泄漏而造成人身伤害、财产损失或遥控器损坏，请：
  - 按照遥控器上标明的 + 极和 - 极，正确安装所有电池。
  - 请勿混合使用电池（旧电池与新电池或碳电池与碱性电池，等等）。
  - 若打算长期不用遥控器，应取出电池。
- 请确保产品周围有足够的空间进行通风。
- 切勿将系统暴露在漏水或溅水环境下。
- 不要将任何危险源放在系统上（例如装有液体的物体、点燃的蜡烛）。
- 如果将直插式适配器的插头用作断开设备，则断开设备应可以随时使用。

### 注

- 铭牌（铭牌上的信息包括工作电压，消耗功率，绝缘等级）位于产品底部，使用前请先了解铭牌上的相关信息。

### 注意

- 如果电池已耗尽或无法长时间使用，请将其取出。
- 电池含有化学物质，因此应正确处理。
- 高酸盐材料 - 可能需要特殊处理。请参阅 [www.dtscc.ca.gov/hazardouswaste/perchlorate](http://www.dtscc.ca.gov/hazardouswaste/perchlorate)。

- 产品/遥控器可能包含纽扣式/按钮式电池，容易被吞咽。始终将电池放在儿童接触不到的地方！如不慎吞咽，电池可能导致严重受伤或死亡。摄入后 2 小时内可能发生严重的内部烧伤。
- 如果您怀疑电池不慎被吞咽或位于体内的任何部位，请立即就医。
- 更换电池时，请务必将所有新旧电池放在儿童接触不到的地方。更换电池后，确保电池也完全紧闭。
- 如果电池也无法完全紧闭，请不要继续使用产品。放在儿童接触不到的地方并联系制造商。

### 注意

如果用户未经 Philips 优质生活部门的明确许可而擅自对此设备进行更改或修改，则可能导致其无权操作此设备。

本产品采用可回收利用的高性能材料和组件制造而成。



如果产品上贴有带叉的轮式垃圾桶符号，则表示此产品符合欧盟指令 2002/96/EC。



请熟悉当地针对电子和电器产品制订的分门别类的收集机制。请遵循当地的规章制度，不要将旧产品与一般的生活垃圾一同弃置。正确弃置旧产品有助于避免对环境和人类健康造成潜在的负面影响。

本产品包含欧盟指令 2006/66/EC 涉及的电池，该电池不可与普通生活垃圾一起处理。请自行了解当地关于分类收集电池的规定，正确弃置电池有助于避免对环境 和人类健康造成负面影响。



#### 环境信息

已省去所有不必要的包装。我们努力使包装易于分为三种材料：纸板（盒）、泡沫塑料（缓冲物）和聚乙烯（袋、保护性泡沫片）。您的系统包含可回收利用的材料（如果由专业公司拆卸）。请遵守当地有关包装材料、废电池和旧设备的处理的规定。

Made for



"Made for iPod"、"Made for iPhone" 和 "Made for iPad" 表示电子附件专为连接 iPod、iPhone 或 iPad 而设计，并经开发人员认证，符合 Apple 性能标准。Apple 对该设备的操作及其是否符合安全和法规标准不负任何责任。请注意，通过 iPod、iPhone 或 iPad 使用该配件可能影响无线性能。iPod 和 iPhone 是 Apple Inc. 在美国 和其它国家/地区注册的商标。iPad 是 Apple Inc. 的商标。

#### 环境信息

已省去所有不必要的包装。我们努力使包装易于分为三种材料：纸板（盒）、泡沫塑料（缓冲物）和聚乙烯（袋、保护性泡沫片）。您的系统包含可回收利用的材料（如果由专业公司拆卸）。请遵守当地有关包装材料、废电池和旧设备的处理的规定。

#### II 类设备符号：



具有双重绝缘的 II 类设备，不提供保护接地。

## 2 规格

### 功放器

额定输出功率	2 x 5 瓦 RMS
频率响应	80 赫兹 -16 千赫，±3dB
信噪比	>67dBA
Aux 输入 (MP3 link)	0.6 伏 RMS 20 千欧

### FM

调谐范围	FM 87.5 - 108 兆赫
调谐栅	50 千赫
- 单声道，26dB 信噪比	<22 dBf
- 立体声，46dB 信噪比	<43 dBf
搜索灵敏度	<28 dBf
总谐波失真	<2%
信噪比	> 50 dB

### 扬声器

扬声器阻抗	4 欧姆
扬声器驱动器	57 毫米
灵敏度	>84dB/m/W

### 一般信息


交流电源	约 220 伏，50 赫兹
操作功耗	7.5 瓦
待机功耗（时钟显示）	<1 瓦
尺寸	
- 主装置（宽 x 高 x 厚）	263 x 135 x 163 毫米
重量（主装置，不带包装）	1.13 千克

部件名称 Name of the Parts	有毒有害物质或元素 Hazardous/toxic Substance					
	铅 (Pb, Lead)	汞 (Hg, Mercury)	镉 (Cd, cadmium)	六价铬 (Chromium 6+)	多溴联苯 (PBB)	多溴二苯醚 (PBDE)
Housing 外壳	○	○	○	○	○	○
Loudspeakers 喇叭单元	○	○	○	○	○	○
PWBs 电路板组件	x	○	○	○	○	○
Accessories (Remote control & cables) 附件（遥控器，电源线，连接线）	x	○	○	○	○	○

○：表示该有毒有害物质在该部件所有均质材料中的含量均在 SJ/T11363 - 2006 标准规定的限量要求以下。  
○: Indicates that this toxic or hazardous substance contained in all of the homogeneous materials for this part is below the limit requirement in SJ/T11363 – 2006.

x：表示该有毒有害物质至少在该部件的某一均质材料中的含量超出 SJ/T11363 – 2006 标准规定的限量要求。

X: Indicates that this toxic or hazardous substance contained in at least one of the homogeneous materials used for this part is above the limit requirement in SJ/T11363 - 2006.



环保使用期限 Environmental Protection Use Period

*This logo refers to the period ( 10 years )*  
电子信息产品中含有的有毒有害物质或元素在正常使用的条件下不会发生外泄或突变，电子信息产品用户使用该电子信息产品不会对环境造成严重污染或对其人身、财产造成严重 损害的期限。

This logo refers to the period ( 10 years ) during which the toxic or hazardous substances or elements contained in electronic information products will not leak or mutate so that the use of these [substances or elements] will not result in any severe environmental pollution, any bodily injury or damage to any assets.