

Always there to help you

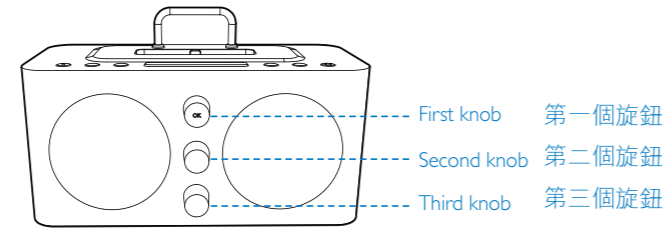
Register your product and get support at
www.philips.com/welcome

AJ6200D/98

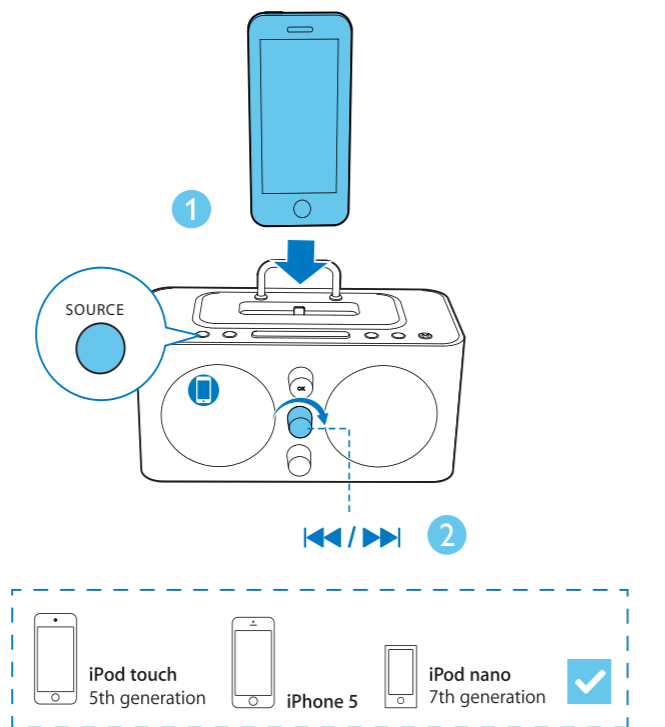
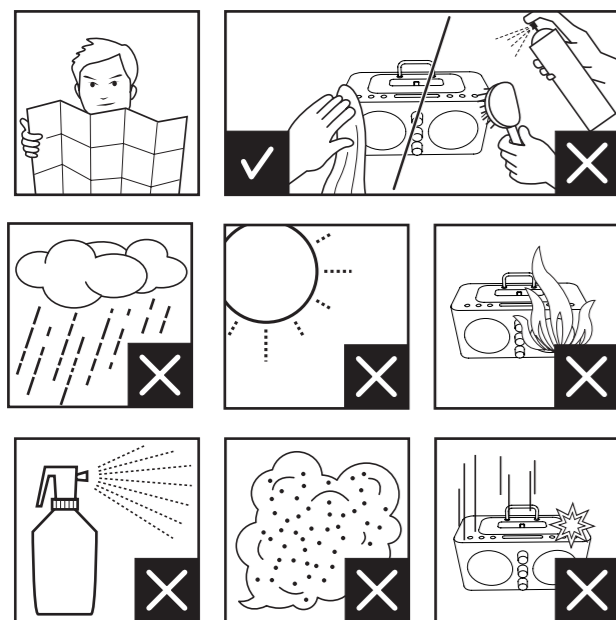
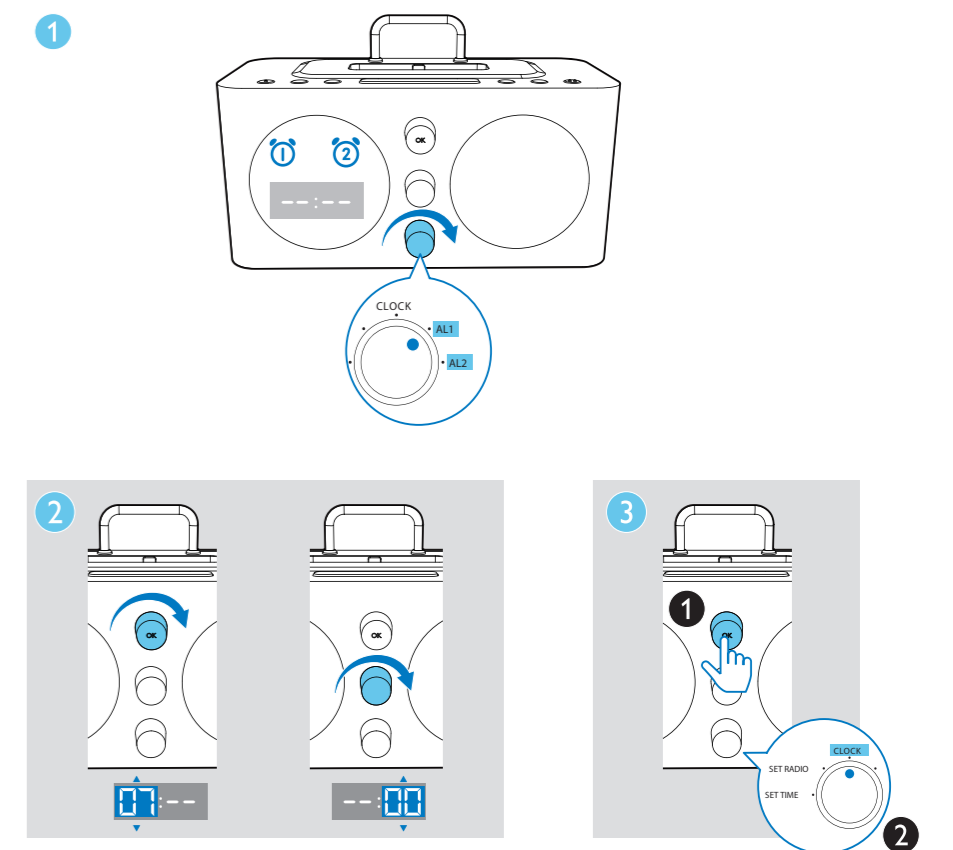
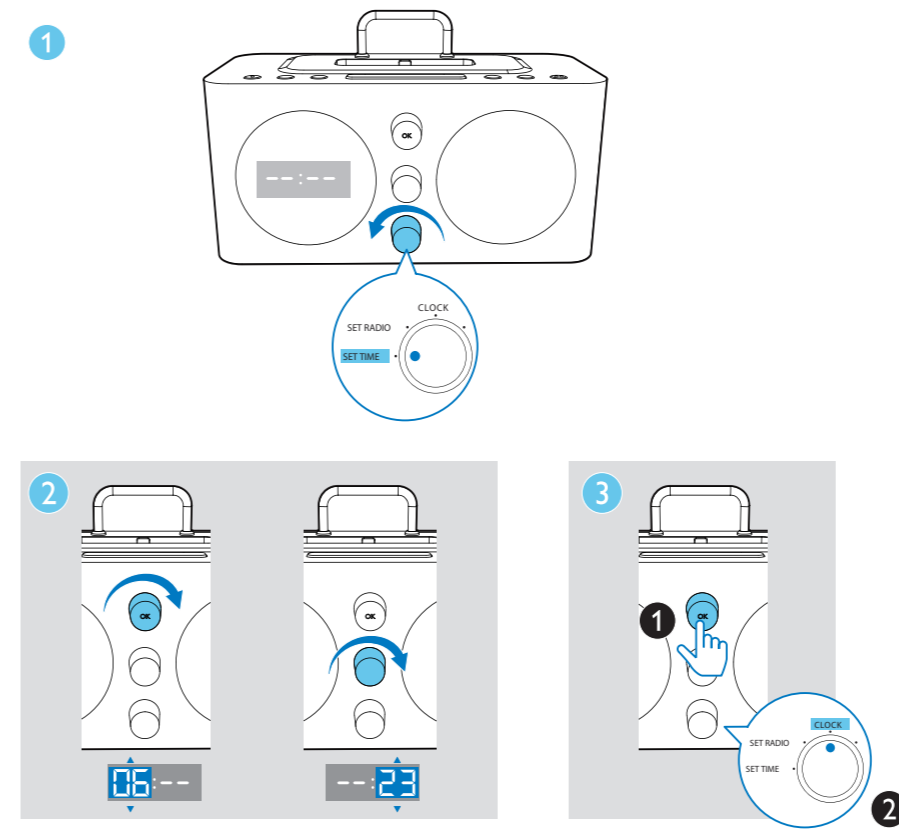
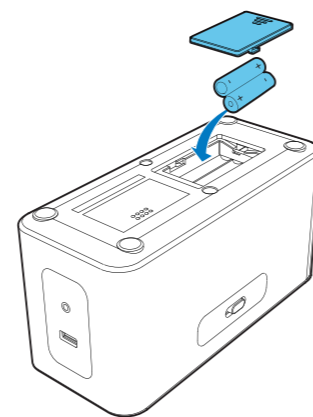
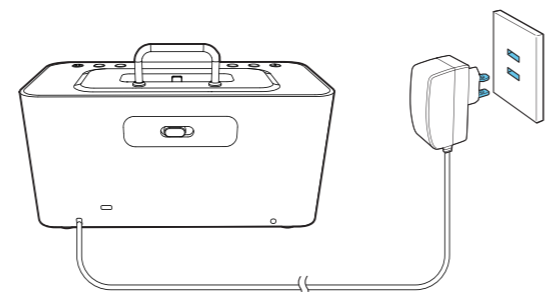


EN Short User Manual
ZH-TW 短版使用手冊

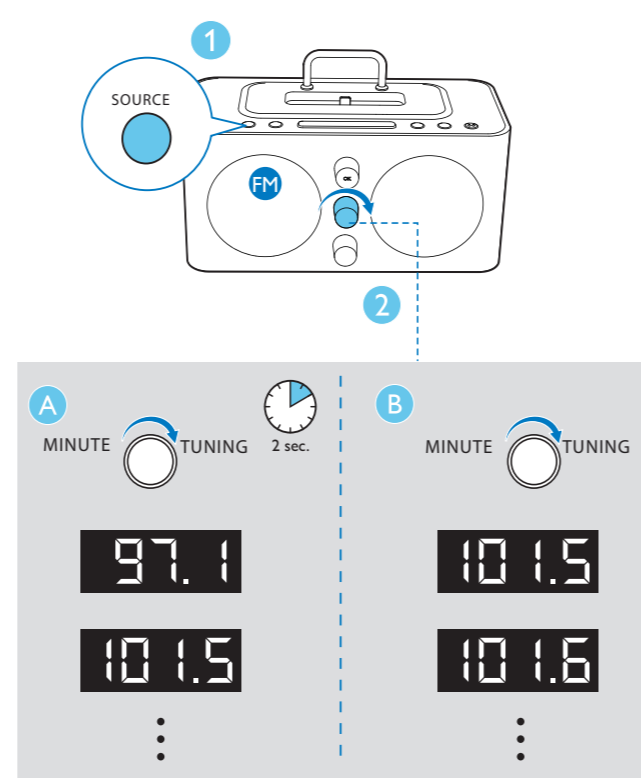
PHILIPS



Before using your product, read all accompanying safety information.
使用前請閱讀所有的相關安全信息。

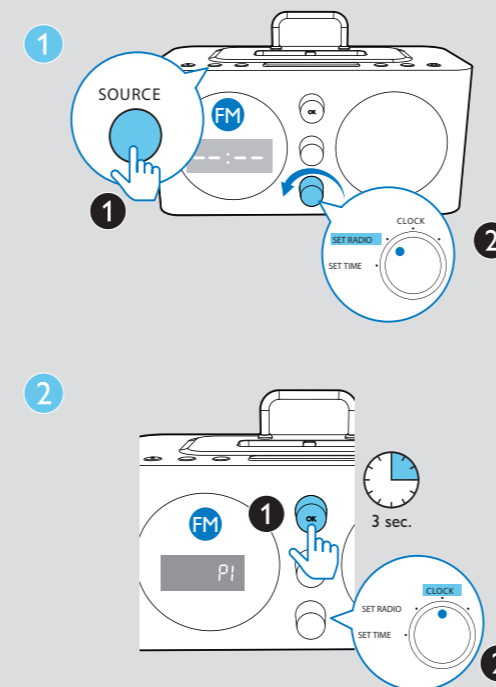


Switch the Second Knob to select previous or next track during play.
旋轉第二個旋鈕可選擇上一首或下一首曲目。



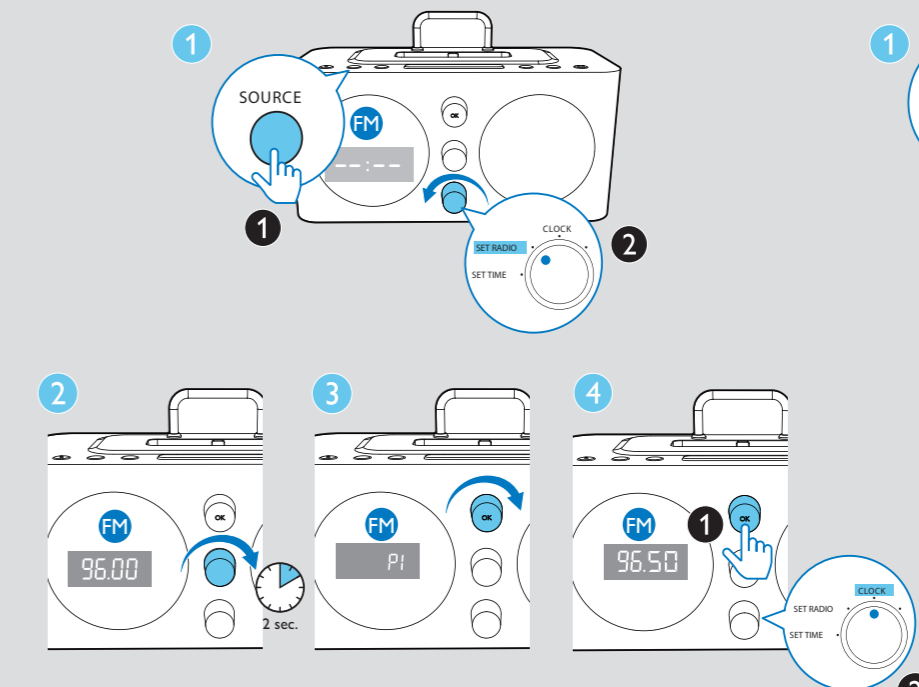
Make sure that the Third Knob switches to **CLOCK** before setting
設置之前，確保第三個旋鈕轉至**CLOCK**。

Store FM radio stations automatically
自動存儲FM電臺



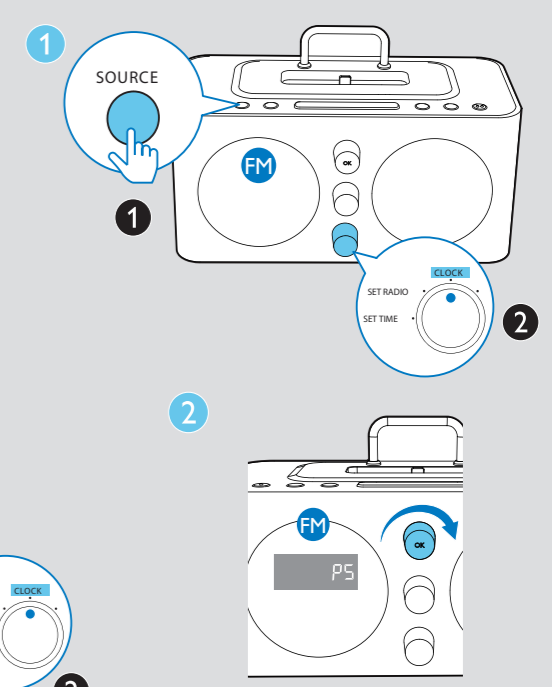
You can store a maximum of 20 FM radio stations.
您最多可存儲20個FM電臺。

Store FM radio stations manually
手動存儲FM電臺

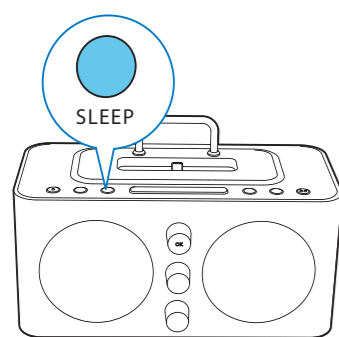


Repeat steps 2-4 to store other stations.
重複步驟2-4可存儲其他電臺。

Select a preset radio station
選擇預設電臺



z Z



SLEEP

15 → 30 → 60 → 90 → 120

OFF

EN

Congratulations on your purchase and welcome to Philips!

To fully benefit from the support that Philips offers, register your product at www.philips.com/welcome.

Safety

Warning

- Never remove the casing of this clock radio.
- Never lubricate any part of this clock radio.
- Never place this clock radio on other electrical equipment.
- Keep this clock radio away from direct sunlight, naked flames or heat.
- Make sure that you always have easy access to the power cord, plug or adaptor to disconnect the clock radio from the power.

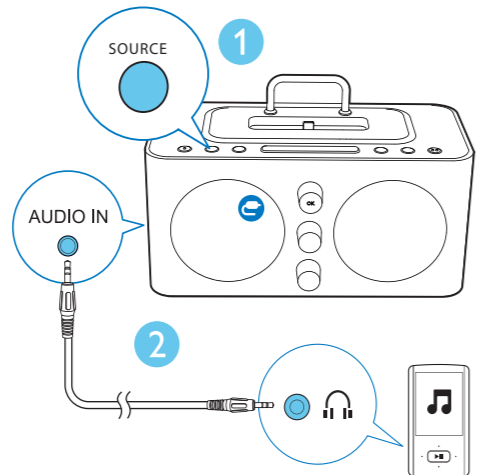
- Make sure that there is enough free space around the product for ventilation.
- The clock radio shall not be exposed to dripping or splashing.
- Do not place any sources of danger on the clock radio (e.g. liquid filled objects, lighted candles).
- Where the plug of the Direct Plug-in Adapter is used as the disconnect device, the disconnect device shall remain readily operable.
- Only use power supplies listed in the user manual.
- Battery usage CAUTION – To prevent battery leakage which may result in bodily injury, property damage, or damage to the unit:
 - Install all batteries correctly, + and - as marked on the unit.
 - Do not mix batteries (old and new or carbon and alkaline, etc.).
 - Remove batteries when the unit is not used for a long time.
 - The batteries should not be exposed to excessive heat such as sunshine fire or the like.

Notice

Any changes or modifications made to this device that are not expressly approved by Philips Consumer Lifestyle may void the user's authority to operate the equipment.



Your product is designed and manufactured with high quality materials and components, which can be recycled and reused.



AUDIO IN

Please inform yourself about the local separate collection system for electrical and electronic products.

Please act according to your local rules and do not dispose of your old products with your normal household waste. Correct disposal of your old product helps to prevent potential negative consequences for the environment and human health.

Environmental information

All unnecessary packaging has been omitted. We have tried to make the packaging easy to separate into three materials: cardboard (box), polystyrene foam (buffer) and polyethylene (bags, protective foam sheet).

Your system consists of materials which can be recycled and reused if disassembled by a specialized company. Please observe the local regulations regarding the disposal of packaging materials, exhausted batteries and old equipment.



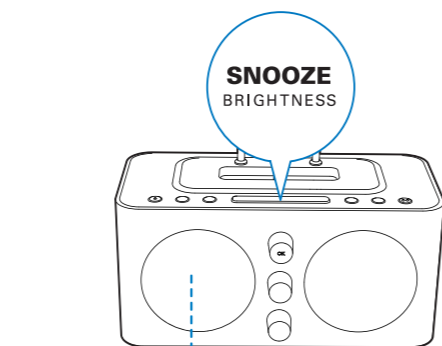
"Made for iPod" and "Made for iPhone" mean that an electronic accessory has been designed to connect specifically to iPod or iPhone respectively, and has been certified by the developer to meet Apple performance standards. Apple is not responsible for the operation of this device or its compliance with safety and regulatory standards. Please note that the use of this accessory with iPod or iPhone may affect wireless performance.

iPod and iPhone are trademarks of Apple Inc., registered in the U.S. and other countries.



Note

- The type plate is located on the bottom of the apparatus.



ZH-TW

注意事項

警告

- 切勿拆下本時鐘收音機的外殼。
- 切勿潤滑本時鐘收音機的任何部件。
- 切勿將本時鐘收音機置於其他電器設備之上。
- 應讓本時鐘收音機遠離陽光直射、明火或高溫。
- 確保始終可輕易地接觸到電源線、電源插頭或適配器，以便於斷開時鐘收音機的電源。

- 請確保產品周圍有足夠的空間進行通風。
- 不得將時鐘收音機暴露在漏水或濺水環境下。
- 不要將任何危險源放在本時鐘收音機上（例如裝有液體的物體、點燃的蠟燭）。
- 如果將直插式適配器的插頭用作斷開設備，則斷開設備應可以隨時使用。
- 僅使用用戶手冊中列出的電源。
- 電池使用注意事項，為防止電池洩漏而造成人身傷害、財產損失或裝置損壞，請：
 - 按照裝置上標明的 + 極和 - 極，正確安裝所有電池。
 - 請勿混合使用電池（舊電池與新電池或碳電池與鹼性電池，等等）。
 - 若打算長期不用本裝置，應取出電池。
 - 不可將電池置於高溫環境，如陽光直射處、明火或類似環境。

注意

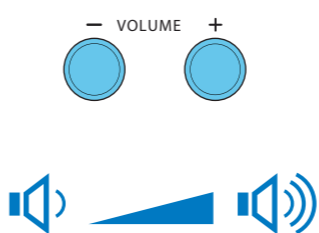
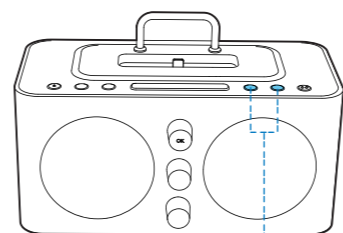
如果用戶未經 Philips 優質生活部門的明確許可而擅自對此設備進行更改或修改，則可能導致其無權操作此設備。



本產品採用可回收利用的高性能材料和組件製造而成。請遵循當地的規章制度，不要將舊產品與一般的生活垃圾一同棄置。正確棄置舊產品有助於避免對環境和人類健康造成潛在的負面影響。

環境信息

已省去所有不必要的包裝。我們努力使包裝易於分為三種材料：紙板（盒）、泡沫塑料（緩沖物）和聚乙烯（袋、保護性泡沫片）。



您的系統包含可回收利用的材料（如果由專業公司拆卸）。請遵守當地有關包裝材料、廢電池和舊設備的處理的規定。

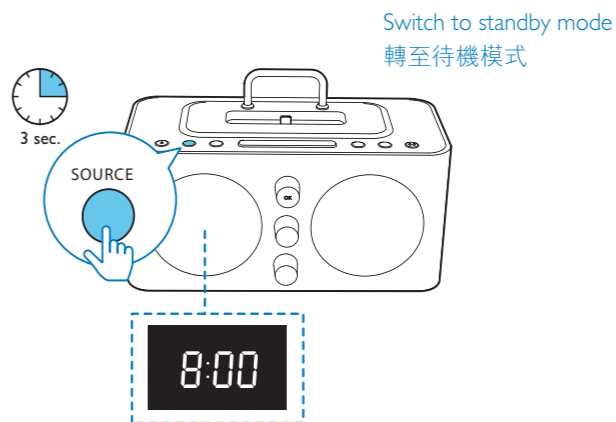
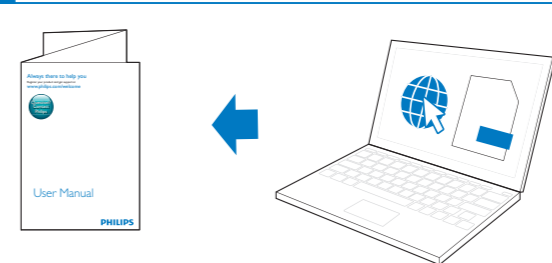


「Made for iPod」和「Made for iPhone」表示電子附件專為連接 iPod 或 iPhone 而設計，並經開發人員認證，符合 Apple 性能標準。Apple 對該設備的操作及其是否符合安全和法規標準不負責任。請注意，通過 iPod 或 iPhone 使用該附件可能影響無線性能。

iPod 和 iPhone 是 Apple Inc. 在美國 和其它國家/地區註冊的商標。

注

- 型號銘牌位於本設備的底部。

Switch to standby mode
轉至待機模式

To download the full user manual, visit www.philips.com/support
訪問 www.philips.com/support 下載完整的用戶手冊。

Specifications

Rated Output Power	5 W RMS
Signal to Noise Ratio	>50 dB
Tuning range	87.5-108 MHz
Power supply	Model: AS190-090-AD160;
- AC Power	Input: 100-240 V~, 50/60 Hz, 0.7 A Output: 9.0 V == 1600 mA
- Battery	2 x AA batteries
Operation Power Consumption	<15 W
Standby Power Consumption	<1 W
Dimensions: Main Unit (W x H x D)	195 x 99 x 123 mm
Weight: Main Unit	0.79 kg

規格

額定輸出功率	5 W RMS
信噪比	>50 dB
調諧範圍	87.5-108 MHz
電源供應	型號: AS190-090-AD160;
- AC 電源	輸入: 100 - 240 V~, 50/60 Hz, 0.7 A 輸出: 9 V == 1600 mA
- 電池	2 x AA 電池
操作功耗	<15 W
待機功耗	<1 W
尺寸 - 主裝置 (寬 x 高 x 厚)	195 x 99 x 123 公厘
重量 - 主裝置	0.79 公斤

Philips Electronics Australia Limited and Philips New Zealand Limited

Warranty against Defects

In this warranty:

We or us means Philips Electronics Australia Limited (ACN 008 445 743) or Philips New Zealand Limited (Company Number 1723), and our contact details are set out at the end of this warranty;

You means the purchaser or the original end-user of the Goods;

Supplier means the authorised distributor or retailer of the Goods that sold you the Goods in Australia or New Zealand; and

Goods means the product or equipment which was accompanied by this warranty and purchased in Australia or New Zealand.

If you require assistance with the operation of the product, its features or specifications please call the Philips Consumer Care Centre on 1300 363 391 in Australia or 0800 658 224 in New Zealand.

Australia: Our Goods come with guarantees that cannot be excluded under the Australian Consumer Law. You are entitled to a replacement or refund for a major failure and for compensation for any other reasonably foreseeable loss or damage. You are also entitled to have the Goods repaired or replaced if the goods fail to be of acceptable quality and the failure does not amount to a major failure. This is not a complete statement of your legal rights as a consumer.

New Zealand: Our Goods come with guarantees that cannot be excluded under the Consumer Guarantees Act 1993. This guarantee applies in addition to the conditions and guarantees implied by that legislation.

Additional Warranty: In addition to the rights and remedies that you have under the Australian Consumer Law, Consumer Guarantees Act of New Zealand or any other applicable law, we provide the following warranty against defects:

1. If, during the first 12 months from their date of purchase from the Supplier (**Warranty Period**), the Goods prove defective by reason of improper workmanship or materials and none of your statutory rights or remedies apply, we will repair or replace the Goods without charge.

2. We do not have to repair or replace the Goods under this Additional Warranty if the Goods have been used for a commercial purpose; misused; improperly or inappropriately installed, operated or repaired; abused; damaged, or not maintained in accordance with the manufacturer's instructions.

3. Even when we do not have to repair or replace the Goods, we may decide to do so anyway. In some cases, we may decide to substitute the Goods with a similar alternative product of our choosing. All such decisions are at our absolute discretion.

4. All such repaired, replaced or substituted Goods continue to receive the benefit of this Additional Warranty for the time remaining on the original Warranty Period.

5. This Additional Warranty is limited to repair, replacement or substitution only. As far as the law permits, we will not be liable for any loss or damage caused to property or persons arising from any cause whatsoever.

6. In order to claim under this Additional Warranty you must telephone us on 1300 363 391 in Australia or 0800 658 224 in New Zealand within the Warranty Period. You will be asked for details of the Goods, a description of the defect and your personal details. Upon accepting your claim, we shall assist you with either returning the Goods to the Supplier for replacement or to the most convenient Philips Authorised Service Centre for your Goods to be repaired. In some cases we may require that you return to the Goods to us (at the address below) for repair, replacement or substitution.

* All returned Goods must be accompanied by satisfactory proof of purchase which clearly indicates the name and address of the Supplier, the date and place of purchase and identifies product. It is best to provide a legible and unmodified receipt or sales invoice.

* You must bear any expense for return of the Goods or otherwise associated with making your claim under this Additional Warranty.

7. This warranty is only valid and enforceable in Australia and New Zealand.

Contact us or the place of purchase for further details.

Philips Electronics Australia Limited
Level 2, 1 Nugent St
Graton, AUCKLAND, 1023
Consumer Care: 0800 658 224
E-mail: ocainfo.australia@philips.com
Website: www.philips.com/support

Philips New Zealand Limited
Level 2, 1 Nugent St
Graton, AUCKLAND, 1023
Consumer Care: 0800 658 224
E-mail: ocainfo.australia@philips.com
Website: www.philips.com/support